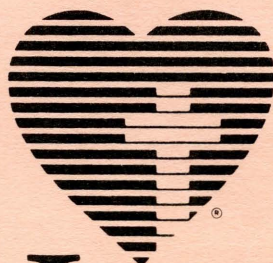


1989 Annual



Here's Hope.
Jesus cares for you.

1990 Simultaneous Revival Emphasis

Tuckaseegee
Baptist Association
Sylva, North Carolina

SE 30 '93

THE LIBRARY
SOUTHEASTERN BAPTIST
THEOLOGICAL SEMINARY
WAKE FOREST, N.C. 27588-145

Tuckaseige Baptist Association

Held With

CASHIERS BAPTIST CHURCH
October 12, 1989

SCOTTS CREEK BAPTIST CHURCH
October 13, 1989

The One Hundred Sixty-first Annual Session



THE LIBRARY
SOUTHEASTERN BAPTIST
THEOLOGICAL SEMINARY
WAKE FOREST, N.C. 27588-4499

SE 30 '93

To Be Held With

OCHRE HILL BAPTIST CHURCH
October 18, 1990

WEBSTER BAPTIST CHURCH
October 19, 1990

Director of Missions John Reid
Moderator Clyde Vance
Vice Moderator Mike Farmer
Clerk Annie Hoyle

Table of Contents

Order of Business	1
Calendar of Activities	2
Nominating Committee Report	5
Committee on Committees Report	5
PROGRAM REPORTS	
Director of Missions	9
Brotherhood	11
Church Training	11
Deacons, Pastors and Spouses	12
Evangelism	12
Music	13
Ordination	13
Royal Ambassadors	13
Single Adults	14
Time, Place and Preacher 1990	14
Vacation Bible School	14
Woman's Missionary Union	14
Youth	15
INSTITUTIONAL REPORTS	
Baptist Children's Homes	16
Baptist Colleges	17
Baptist Hospital	17
Baptist Student Union	18
Chaplin - C.J. Harris Hospital	19
Baptist Retirement Homes	20
Truett Baptist Camp	20
AGENCY REPORTS	
American Bible Society	21
Annuity	21
Baptist Foundation	23
<i>Biblical Recorder</i>	23
Christian Action League	24
Gideons International	25
FINANCIAL REPORTS	
Stewardship	25
August Associational Financial	26
Proposed Budget	27
Constitution	29
Map	36
Memorials	38
Messengers	40
ASSOCIATIONAL DIRECTORY	
Association Council	41
Baptist Men	41
Discipleship Training	42
Clerks	42
Deacon Chairmen	43
Lay Representatives	44
Mission Development	45

Media Library	45
Ministers of Music	45
Pastors	46
Secretaries	47
Stewardship	48
Sunday School	49
Sunday School Assist Team	50
Treasurers	52
Royal Ambassadors	53
Single Adults	53
Woman's Missionary Union	50
Youth	51
Ordained and Licensed Ministers	53
TABLES	
Historical	54
A - Membership	58
B - Sunday School	60
C - Church Discipleship	62
D - Church Music	64
E - W.M.U.	66
F - Brotherhood	68
G - Total Receipts	70
H - Missions	72
I - Special Information	74
Organizational Chart	76

Dedication



INA GREENE TURPIN

Ina Green Turpin was born in the Greene Creek Community in 1909. She is the fourth of 11 children born to Estes and Elenora Ashe Greene. In 1924 she made a profession of faith and was baptized and received into the membership of the Old Savannah Baptist Church.

She graduated from Webster High School in 1926 and attended Western Carolina College for two years. She taught in a one room school on Dicks Creek for better than a year and substituted there for several years.

On December 21, 1929, Ina married Jarvis Turpin. They have three children: James of Candler; Zeb of Pisgah Forest; and Jo Meta Medford of Sylva. James and Zeb are deacons of their church and Jo is active at the East Sylva Baptist Church and serves on committees for the Tuckaseegee Baptist Association.

Ina has five grandchildren and one great-grandchild.

Ina has been Church Clerk and Treasurer at Dicks Creek Baptist Church since August 1946. She has served on the Missions Committee for the Tuckaseegee Association and has been an Assistant Clerk of the Association.

She has generously donated her time during special projects for the Association such as helping with the **BOOK OF REPORTS**. She served on an important committee to compile a book of history for all Baptist churches in the Association.

In public life she has worked at Belks Department Store, in the alteration department of the main store, and cafeteria work at Sylva-Webster High School. When her father-in-law and mother-in-law became ill, she left public work to care for them for the remainder of their lives.

She has been very active as a member of the Jackson County Homemakers Club. She is a past president of the Log Cabin Club, having served in that office twice. She is a past secretary and treasurer of the Jackson County Council of Homemakers as well as a past president of the county organization. In 1966 she was elected by her peers as "Club Woman of the Year."

Ina Greene Turpin has lived a long and fruitful life for the Lord. She continues to be an active member of her church and a strong supporter of the Association. Her love for the Lord and her faithful service in His kingdom continues to bless our lives. It is with deep gratitude and great joy that the Tuckaseegee Baptist Association dedicates the 1988-1989 Annual Minutes to Ina Greene Turpin.

Order of Business

of the
Tuckaseegee Baptist Association
160th Annual Meeting
First Session

CASHIERS BAPTIST CHURCH
Friday, October 12, 1989

REV. ROY BURNETTE, MODERATOR

5:00 p.m.	Supper	Host Church
6:00	Convene	Roy Burnette, Moderator
6:05	Welcome	Lewis Smith, Host Pastor
	Song	Harry Vance
6:10	Message	Dan Ward
6:30	Song	Harry Vance
6:35	Adoption of BOOK OF REPORTS AND ORDER OF BUSINESS	
6:40	Recognition - New Pastors and Visitors	Moderator
6:45	Director of Missions	John Reid
6:55	Baptist Student Union	Winston Hardman
7:00	Baptist Children's Homes	Bill Morrow
7:10	Baptist Retirement Homes	Ruth Lowe
7:20	Song	Harry Vance
7:25	Baptist State Convention	Jim Dean
7:35	<i>Biblical Recorder</i>	John Reid
7:40	Truett Baptist Camp	Richard Robertson
7:50	Baptist Colleges	Harry Stokes
8:00	Baptist Hospital	Calvin Knight
8:10	Song	Harry Vance
8:15	Gideons	Harry Griffen
8:20	C.J. Harris Hospital	Jack Hinson
8:25	United Christian Ministry	Elizabeth Peacock
8:35	General Board	Lloyd Fish
8:40	Digest of Letters	Annie Hoyle
8:50	Constitution Committee	Kenneth Pressley
8:55	Miscellaneous	Moderator
9:00	Adjourn	Moderator

Second Session
SCOTTS CREEK BAPTIST CHURCH
Friday, October 13, 1989

5:00 p.m.	Supper	Host Church
6:00	Convene	Roy Burnette, Moderator
6:05	Welcome	Lloyd Fish, Host Pastor
	Song	Harry Vance

6:10	Message	Charles Brown
6:20	Brazil Report	Cheryl Aldridge
6:35	Finance Committee	Harold Anderson
	Treasurer	Jesse Flake
6:45	Nominating Committee	Dillard Moore
6:50	Committee on Committees	Tom Collins
6:55	Missions Committee	Tommy Lamb
7:00	Song	Harry Vance
7:05	Evangelism Committee	Joe Yelton
7:10	Time, Place and Preacher Committee	Jack Hinson
7:15	Ordination Committee	Charles Brown
7:20	Constitution Committee	Kenneth Pressley
7:25	Sunday School	Barry Almand
7:35	Vacation Bible School	Tom Crowder
7:40	Church Training	Norman Parris
7:45	Baptist Men	Elmer Hooper
7:55	Royal Ambassadors	Mike Moses
8:05	Song	Harry Vance
8:10	Deacons, Pastor, Spouse Conference	Haven Ensley
8:15	Youth	Geraldine Jones
8:25	Music	Harry Vance
8:35	Woman's Missionary Union	Shirley Kool
8:45	Memorial Committee	Kathleen Buchanan
8:55	Miscellaneous	Moderator
9:00	Resolutions Committee	
	Adjourn	Moderator

Calendar of Activities

1989-1990

OCTOBER 1989

2	Executive Committee, Baptist Center, 7:30 p.m.
3	ASSISTeam, Baptist Center, 7:30 p.m.
3	Regional Evangelism Conference, Murphy
5	Cooperative Program Month Emphasis
8	World Hunger Day
12	Associational Annual Meeting, Cashiers Baptist Church
13	Associational Annual Meeting, Scotts Creek Baptist Church
14-15	Mountain Pastors Evangelism Conference, Ridgecrest
20	Singles Meeting, Baptist Center, 6:30 p.m.
23	Associational Council, Baptist Center, 7:30 p.m.
27	Deacons, Pastors, Spouse Conference, East Fork Baptist Church, 6:30 p.m. Senior Deacon and Pastors emphasis.
31	January Bible Study Institute, Mars Hill College

NOVEMBER 1989

1 & 2	Rural Appalachian Director of Missions Conference, Tennessee
4 & 5	Associational Church Training Enabler Conference
7	ASSISTeam, Baptist Center, 7:30 p.m.

9	Southwestern Area Resort Ministries (SWARM), Baptist Center
11-13	N.C. Baptist Men's Convention
13-15	Baptist State Convention, Greensboro
19-22	Foreign Mission Study
23	Thanksgiving, Office Closed
24	Office Closed
27	Associational Church Training "M" Night
TBA	Associational Lay Evangelism School

DECEMBER 1989

1	Singles Christmas Party, Baptist Center
3-10	Foreign Missions Week of Prayer and Lottie Moon Christmas Offering
9	Executive Committee and Family Christmas Party
25	Christmas, Office Closed
26	Office Closed

JANUARY 1990

1	Executive Committee, Baptist Center, 7:30 p.m.
1	New Year's Day, Office Closed
14	Soul Winning Commitment Day
15	Area Bible Drill Training Conference, Hendersonville
19	"Let's all go to Church" Worship Planning Seminar, Beverly Hills Church, Asheville
19-21	N.C. Baptist Men's Convention, Raleigh
21	Sanctity of Human Life Sunday
26	Pastors, Deacons, Spouse Fellowship, TBA
28	Baptist Men's Day

FEBRUARY 1990

5- 6	Evangelism Conference, Greensboro
6	ASSISTeam, Baptist Center, 7:30 p.m.
9-10	ASSISTeam Training, Ridgecrest
11-17	Focus Week, WMU
18-21	Home Mission Study
19-20	Twenty-four Hours at Ridgecrest
26-28	Convention Staff/DOM, Caraway
25	Volunteers in Missions Day

MARCH 1990

2- 4	High School Seniors' Retreat, Caraway
6	ASSISTeam, Baptist Center, 7:30 p.m.
8	VBS Institute, TBA
9	RA Race, Baptist Center
4-11	Home Mission Week of Prayer - Annie Armstrong Easter Offering
TBA	Mission trip to Brazil
26	Preview of Baptist Doctrine Study, Baptist Center
29	VBS Team Meeting, Baptist Center
30-31	WMU Annual Meeting, Ridgecrest
31	Lad/Crusader RA Congress, West

APRIL 1990

2	Executive Committee, Baptist Center, 7:30 p.m.
3	ASSISTeam, Baptist Center
10	VBS Pastors-Directors' Clinic, Baptist Center
15	Easter Sunday
22-25	HERE'S HOPE, JESUS CARES FOR YOU Simultaneous Revivals

- 25 Region 9-10 Associational DOM Conference, Baptist Center, 10:00 a.m.
- 27 Deacon, Pastor, Spouse Dinner, TBA
- 27 Single Adult Dinner, TBA
- 30 VBS Clinic

MAY 1990

- 6 Senior Adult Day
- 8 VBS Clinic, TBA
- 13 Mother's Day
- 14-15 Key Leadership, Ridgecrest
- 21-27 Associational Emphasis Week
- 27 Pastor Appreciation Sunday, Lunch at Baptist Center

JUNE 1990

- 5 ASSISTeam
- 12-14 Southern Baptist Convention, New Orleans, LA
- 11-15 Camp Truett, Girls Week
- 18-23 Camp Truett, Girls Week
- 25-29 DOM Conference, Wingate

JULY 1990

- 4 Independence Day, Office Closed
- 9-13 Music Week, Camp Truett
- 10 ASSISTeam, Baptist Center
- 23 Executive Committee, Baptist Center, 7:30 p.m.
- 27 Super Summer Youth, Carowinds
- 27 Deacons, Pastors, Spouse Fellowship, TBA
- 28 Single Adults, Belle Chere

AUGUST 1990

- 5 Day of Prayer for World Peace
- 7 ASSISTeam, Baptist Center
- 13 Music Methods and Materials Clinic, Biltmore Church
- 18-24 Church Training Leadership, Ridgecrest Conference
- TBA Seminar on Mormonism, Interfaith Witness

SEPTEMBER 1990

- 4 ASSISTeam, Baptist Center
- 6 Broyhill Home Annual Supper and Program
- 7 Reports for BOOK OF REPORTS due
- 7-9 Western Happiness Retreat, Truett Camp
- 9 Single Adults, Baptist Center
- 11 Associational Sunday School Leadership Night
- 14 All Church Letters due
- 14-15 Sunday School Fall Leadership Training, Ridgecrest
- 14-15 Western Directors of Mission Conference
- 21-22 Mountain DOM Conference, Lake Junaluska

Nominating Committee Report

OFFICERS

- Moderator Clyde Vance
- Vice Moderator Mike Farmer
- Clerk Annie Hoyle
- Assistant Clerk Barbara Vance
- Treasurer Jess Flake
- Assistant Treasurer Tom Crowder
- Musician Barbara Vance
- Parliamentarian Kent Coward
- Assistant Parliamentarian Mike Moore
- Stewardship Roy Burnette
- Trustee Conrad Burrell

PROGRAM LEADERS

- Sunday School Barry Almand
- Assistant Sunday School Director Lindon Allen
- Church Training Norman Parris
- Assistant Church Training Director Shirley Pressley
- Music Director Harry Vance
- Brotherhood Kenneth Pressley
- RA Director Mike Moses
- Vacation Bible School Director Tom Crowder
- Assistant VBS Director Tom Collins
- Single Adults Keith Campbell
- Senior Adults
- Mission Development Irene Hooper
- Youth Director Geraldine Jones
- Assistant Youth Director June Sisti
- Prayer Coordinator Robert Blanton

INSTITUTIONS, AGENCIES, ETC.

- Annuity Charles Ginn
- Baptist Foundation Wanda Mills
- Biblical Recorder Margie Messer
- Christian Education Peggy Jones
- Gideons Harry Griffen
- Historian Annie Hoyle
- H & HO Jean Jamison
- Seminary Extension Ray Houston

Committee on Committees

BUILDING AND GROUNDS

- Charles Dean
- Allen Johnson
- Dean Stephens

CONSTITUTION

- Lincoln Shuler
- Jerry Rice
- Jeannie Miller

CREDENTIALS

- Charles Moses
- Hazen Pangle
- Charles Carnes
- Charles Ginn
- Lewis Keener

EVANGELISM

- Joe Yelton
- J.D. Grant
- Kenneth Pressley
- Charles Sisti

FINANCE

Lloyd Fish
 Ray McCall
 Arlie Moss
 Jo Medford
 Rita Norris

MEMORIAL

Kathleen Buchanan
 Betty Greene
 Linda Fisher

MISSIONS

Tommy Lamb
 Bill Greene
 Robert Blanton
 Gary Frye
 Irene Hooper

NOMINATING

Ray Buchanan
 Alice Cabe

Jeff Lee
 Daniel Deitz
 Jean Keener
 Lewis Smith

ORDER OF BUSINESS

Lee Ensley
 Arthur Stephens
 Mike Moore

ORDINATION

Glenn Blanton
 Larry Nations
 Alvin Loiry
 Ed Beddingfield
 Earl Holden

TIME, PLACE, PREACHER

Jack Hinson
 Alex Pasetti
 Ray Houston

Proceedings

Thursday, October 12, 1989

1. The first session of the 160th Annual Session of the Tuckaseegee Baptist Association was held at Cashiers with the Cashiers Baptist Church serving as host. A delicious meal was served in the Church Fellowship Hall beginning at 5:00 p.m.

2. Mr. Clyde Vance, Vice Moderator, called the meeting to order at 6:00 p.m.

3. The Reverend Harry Vance directed the congregation in the singing of a hymn followed by a welcome and devotional thought by the host Church pastor, the Reverend Lewis Smith.

4. The Reverend Charles Sisti, pastor of the Jarrett Memorial Baptist Church, brought a meaningful and inspirational message using scripture from Acts 4:2 using the title "The Greatest Need of the Churches for 1990."

5. A motion was made that the Reports and the Order of Business schedules as presented in the Book of Reports be adopted. The motion CARRIED.

6. Moderator Vance requested that all pastors new to the Association since the last session stand and be introduced. These new pastors were: Barry Almand, pastor of New Savannah Baptist Church; Ed Beddingfield, pastor of the Sylva First Baptist Church; and Wesley Hooper, pastor of the Zion Hill Baptist Church. Visitors welcomed were: James Johnson from the Baptist Children's Homes; James and Lisa Beam representing the Baptist State Convention; Harry Stokes representing the Institutions of Higher Education; Richard Robertson representing Truett Baptist Camp; Calvin Knight representing the Baptist Hospital; Elizabeth Peacock representing the United Christian Ministries of Jackson County; Jack Hinson, Chaplain of C.J. Harris Hospital; Winston Hardman, Director of the Baptist Student Union; and Ruth Lowe representing the North Carolina Retirement Homes.

7. John Reid, Director of Missions, delivered a challenging report on the Association and its works and needs.

8. All reports were approved as presented.

9. Winston Hardman brought the report from the Baptist Student Union, located on the Western Carolina University Campus.

10. Winston Hardman reported on the work being done by the University Students in Missions and the support of the WMU and the churches.

11. Jim Johnson presented the report from the Baptist Children's Homes stressing the great need for more financial support and more facilities.

12. Ruth Lowe reported on the Retirement Homes, featuring the Brookridge Home which is the latest addition to the Homes in North Carolina.

13. Jim and Lisa Dean gave the report for the Baptist State Convention.

14. John Reid, by request, brought the report on the *Biblical Recorder*. This report, as well as all of the above, are recorded in the **BOOK OF REPORTS**.

15. Harry Vance led the group in the singing of "How I Love Jesus."

16. Harry Griffen gave a report on the work of the Gideon chapter work in Jackson County. He reported the number of Bibles and Testaments distributed in the schools.

17. Jack Hinson, Chaplain, reported on the work being done by the Chaplain at Mountain Trace, David Webb, and of his work at the C.J. Harris Hospital and the fine cooperation he was receiving from the pastors of the several churches.

18. Richard Robertson, Director of Truett Baptist Camp, spoke of the good work that had taken place in the Camp during the summer and of the needs for expansion. He encouraged the churches to send their children to the camp each summer.

19. Annie Hoyle presented the Digest of Church Letters for 1989. At this time only 45 churches had reported.

20. Kenneth Pressley, chairman of the Constitution Committee, distributed copies of some proposed changes in the Constitution and stated that these changes would be voted on at the Friday session of the meeting.

21. The moderator announced 24 pastors, 81 messengers, 18 visitors present with 31 churches represented.

22. The meeting adjourned at 9:00 p.m. followed by a short period of fellowship among those attending.

Friday, October 13, 1989

23. The Scotts Creek Baptist Church was the host for the second session of the 160th Annual Associational meeting. A delicious meal was served at 5:00 p.m. to 24 pastors, 111 messengers, 13 visitors with a total of 148 present representing 35 churches.

24. The Moderator, Roy Burnette, called the meeting to order at 6:00 p.m.

25. The Reverend Lloyd Fish, pastor of the Scotts Creek Church, gave the welcome and a short devotional using scripture from the 23rd Psalm appealing to the saints to walk in fellowship and in the light of the Lord.

26. Reverend Harry Vance led in the singing of "Victory in Jesus."

27. The Reverend Charles Brown, pastor of the Rockdale Baptist Church, brought a timely message challenging the churches of the association to work in unity as indicated in Romans 12:4-8.

28. The Ambassadors, having recently returned from a mission trip to Brazil, gave a slide presentation of the work being done by volunteer missionaries there.

29. The Reverend Harold Anderson, chairman of the Finance Committee, presented the Proposed Budget for 1989-1990. A copy of this budget was included in the **BOOK OF REPORTS**.

Anderson moved that the Budget be adopted. The motion was seconded and CARRIED.

30. Jesse Flake presented the Financial Report for the year. A copy of this report is found in the minutes. This is the first year in some time that there has been a balance. See Budget for the balances.

Jesse moved that the report be adopted as presented.

The motion was seconded and CARRIED.

31. The name of Joe Pressley was added as chairman of the BROTHERHOOD program by the Nominating Committee. Dillard Moore had served as chairman of the Nominating Committee.

32. Tom Collins, chairman of the Committee on Committees, requested that the Reverend Charles Sisti's name be added to the Evangelism Committee, and Rita Norris be added to the Finance Committee.

The motion made to accept the slate of officers as presented was seconded and CARRIED.

33. In the absence of the chairman no report was made for the Missions Development Committee.

34. Harry Vance led the group in the singing of "Victory in Jesus."

35. The Evangelism Committee Report was presented by Chairman Joe Yelton. This report is recorded in the BOOK OF REPORTS.

Yelton's motion that the report be adopted as presented was seconded and CARRIED.

36. Jack Hinson presented the Time, Place and Preacher Committee Report. His motion that the report be accepted as presented was seconded and PASSED.

37. The Ordination Committee reported two ordinations during the year, Barry Almand and Brian Bishop. Charles Brown, chairman, made the motion that the report be accepted. The motion CARRIED.

38. In the absence of the chairman, Lincoln Shuler, a member of the committee presented the Constitution Report. The proposed changes may be noted in the Constitution indicated by the * symbol.

The motion made that the proposed Constitutional changes be made was CARRIED.

39. Barry Almand, chairman of the Sunday School Committee, reported on the progress being made by the ASSISTeam and invited the churches to call on the leaders for assistance whenever they could be of help.

Almand's motion that the report be accepted as presented was APPROVED.

40. Tom Crowder reported for the Vacation Bible School and urged the churches to send in their reports and to include the results of the Bible Schools on the Church Letters. He requested that the number of VBS be changed from 22 to 27.

41. Norman Parris, reporting for Church Training, announced "M" Night for Monday, November 27 with Maurice Cooper as speaker.

42. Lloyd Fish gave the report on the General Board and its work. His motion that the report be accepted was CARRIED.

43. The group was led by Harry Vance in singing "I Am Resolved."

44. John Reid gave the report on Brotherhood. He told of the work of the Brotherhood and about the two vans that are now available to help in case of emergencies both medically and in supplying physical help for stricken areas. He expressed a desire for a team of men to go to Raleigh and learn how these vans operate.

This motion was accepted and CARRIED.

45. The Deacons, Pastors, Wives Fellowship Report was given by Haven Ensley, chairman. He announced the next meeting for Friday, October 27, at the East Fork Baptist Church. The program will be on the Senior Citizens. He extended a special invitation to the churches with small congregations to feel free to invite the fellowship to their church. He stated that it was necessary to have a meal in order to have the group meet in their church.

46. Geraldine Jones reported on the work being done with the youth. Her report is recorded in these minutes.

The report was approved.

47. The Woman's Missionary Union Report was presented by Shirley Kool, Associational Director. She reported on the dinners being prepared monthly for the BSU Mission group, the can goods drive for the United Christian Ministries of Jackson County and the "Pack a Bag for Brazil" projects.

She encouraged all churches having WMU organizations to send in their reports.

The report was approved.

48. The Memorial Committee presented a memorial to the members who were deceased during the year.

49. During the miscellaneous section the moderator, Roy Burnette, paid tribute to the churches for their cooperation; to the Program Committees for their hard work; to the Vice Moderator, Clyde Vance, for substituting in his absence.

He urged all to become prayer warriors. He spoke of the workers as being the "cornerstones" of the association.

50. Harry Vance announced the paving of the grounds at the Association Building. He explained that the total cost for the work had not been met and urged the churches to contribute to this cause.

51. The Resolutions Committee presented two resolutions: one thanking the Associational Clerks for their faithful work; the second to the host churches, Cashiers and Scotts Creek, for their gracious hospitality.

The resolutions were adopted by the Association.

52. The meeting adjourned at 8:00 p.m. with a feeling of good fellowship, unity and determination to continue to do their best in the Master's work.

Program Reports

Director of Missions Report

In II Corinthians 11:28 the Apostle Paul said, "Besides those things that are without that which cometh upon me daily, the care of all the churches." Paul was not the pastor of all the churches. Yet he had visited many of them in his ministry. Some churches he established. He prayed for and encouraged all of the churches.

God has given me a burden for spiritual prosperity of the Baptist churches here in Jackson County. I consider it both a privilege and a joy to serve as Director of Missions.

I enjoy my visits to the churches. I attend regular services on Sunday morning and evening and Wednesday Prayer Services. I try to attend as many homecomings and revivals as possible. I enjoy attending singings. I am called upon to preach, teach, and help ordain preachers and deacons. I especially enjoy singing in the choir. My greatest frustration is my inability to get around to all of the churches more often. I do try to worship with my family at Ochre Hill one Sunday each month. I have also committed myself to helping churches without a pastor by serving them from four to six Sundays until they can make provisions. My scheduling is on the bases of need and invitation.

My first task is to be a servant to the local church and work cooperatively with local leaders to help each church realize its potential before God. There are many other tasks to the ministry besides those I have already mentioned. I have been involved in helping pulpit committees. I am involved in planning, strategizing, training, equipping, and attending a host of meetings. Baptist churches are numerous and Baptist people are influential in the county. Often, I am called upon by different groups to give some input into their projects.

Our work with the Brazilian Association continues to grow. This past March many of our churches contributed to the sending of seven men and women to Brazil to participate in an evangelistic campaign in the churches of the Northern Baptist Association in the city of Sao Paulo. In July of this year several of our churches joined with other individuals and churches to help send the Ambassadors' Quartet and their wives to Brazil. In each of these visits hundreds of decisions were made in a short time span. I commend the churches for being true to God's Word which mandates the sending of missionaries. This is your invitation to go to Brazil in March of 1990 for a similar evangelistic campaign.

I am pleased with the continued progress of the Celebrate Christ Crusade held in March and sponsored by our Associational Youth Department. Several first time decisions were made as well as many rededications. We will postpone our Crusade next year because of

the **HERE'S HOPE SIMULTANEOUS CRUSADE** in April. I hope 20 churches will participate in the revivals.

A highlight for me this last year was the opportunity to serve as camp pastor at Truett Baptist Camp. Seven of our associational churches sent girls that week. I thank God for eight professions of faith and 35 rededications. There was an unusual moving of the Holy Spirit on Thursday evening of that week that I shall not soon forget. I plan to be camp pastor again next year.

I am grateful for underspread support for the Tuckasegee Baptist Half Hour. Although this is not officially supported by the Association, I do believe it is an excellent means of Bible teaching and outreach. It keeps the activities of our churches and the Sunday School programs and lessons constantly in front of the county. Weekly, I encourage listeners to attend and to support their local church.

Each year there are certain meetings that I attend that have to do with our larger Baptist Family. I attended the regional Vacation Bible School Clinic, Key Leadership Conferences, our State Evangelism Conference and our annual Baptist State Convention meetings. The past year I was asked to serve as chairman of the Preacher, Place and Program Committee for our State Convention. I have been asked to serve in that role again subject to the approval of the messengers at our State Convention this fall. In August of this year, I attended the National Convocation of Directors of Missions held in Ridgecrest. This was one of the best planned, the most professionally helpful, and the most spiritual meetings I have attended in my seven and a half years in this work.

This year has been the best year financially for the Association, since I have been Director of Missions. Thirty-six of our churches have contributed either to the General Fund or through designated gifts. If current trends continue 87 percent of our budget will be met by local church gifts. So far we are ahead of our budget in receipts for the year. Our agreement with the Baptist State Convention is to reduce their Associational support to our general fund over the next six years until they provide no general fund support. That means our churches will be called upon to make up the difference. Currently the State Convention provides 14 percent of our budget. The State Convention desires to move towards a partnership concept in which we do certain projects that both our Association and the State Convention will jointly fund.

Since the beginning of the Brazilian Project our Association has received \$18,769.63. This does not include widespread support of churches that gave directly to those who went to Brazil, but not included in our records. May God be praised for your generous support.

We have committed ourselves to significant progress in the paving of our parking lot and our road. Currently we are receiving contributions from our churches to complete our goal of \$11,500 required to do the full job. Each church has been challenged to give \$74 by our Executive Committee. Let us encourage each church to help us and let us finish the project before cold weather.

I commend Mrs. Annie Hoyle for her fine work and for the many volunteer hours she contributes to the Association in a very quiet and unrecognized but not unappreciated way. She donates many things to the Association. We continue to be blessed by her gift of hospitality as she prepares refreshments for all of our meetings large and small. Her ability to deal with the public touches all our lives.

I am grateful to all the volunteer people, program leaders, officers, committee members who make the Tuckasegee Baptist Association the positive witness for Jesus Christ in our community.

May God continue to grant us His Blessings as we work together for His Glory.

John Reid
Director of Missions

Brotherhood

The Brotherhood Commission continues to feel the effects of its 1987 program changes that produced a comprehensive missions education package aimed at helping churches involve men and boys in missions.

In October 1988 James H. Smith, Brotherhood Commission president, presented a plan of austerity following the production of 31 new books in 1987 and 1988. The production costs had drained the agency's reserves. Smith set a goal of raising \$249,000 over expenses in 1988-1989. At the April trustees' meeting Smith reported that income was already \$177,000 over the expenses.

Located in Memphis, Tennessee, the Brotherhood Commission is pioneering several new aspects of missions education. In May the first RA University, an in-depth national training event for Royal Ambassadors counselors, directors, and committeemen, was held at Rhodes College in Memphis. More than 300 people from across the country attended.

The National Fellowship of Baptist Men, a ministry of the Brotherhood Commission's adult division, continued its expansion of volunteer missions enlistment. In April NFBM announced the expansion of its concert series, which will endorse up to 200 concert artists to present the story of Southern Baptist missions and recruit volunteers.

Baptist Men served more than 95,000 meals in Mexico following Hurricane Gilbert's destruction. In Jamaica Baptist Men worked jointly with the Foreign Mission Board to rebuild churches. More than 700 volunteers participated.

Perhaps the greatest effect of the Brotherhood Commission felt by the churches of the Southern Baptist Convention has again been the regular activities of Baptist Men and Royal Ambassadors. Men and boys have been actively engaged in missions and have developed their own personal ministries. These actions have helped maintain integrity as God's people for God's world and have helped believing men in their relationship to Christ.

Church Training

"M" Night was held at the Scotts Creek Baptist Church on Monday, November 28. There were 138 people present, representing 13 churches. The Reverend Fred Lunsford, Director of Missions of the Truett Baptist Association, brought an inspiring message. The Reverend Charles Dean, pastor of East Sylva Church, did the theme interpretation. Mrs. Frankie Shoupe and Dot Crowe of the Little Savannah Church did a skit. Special music was brought by the Scotts Creek Choir.

The awards and honors were won by the Scotts Creek Church for the most attendance and the Old Savannah for best attendance in Church Training during the year.

"M" Night 1989 will be held at the Jarrett Memorial Baptist Church, November 27. Maurice Cooper, Church Training Director for the Baptist State Convention of North Carolina, will be the speaker.

A Regional Conference sponsored by our State Convention was conducted in March of this year. The business was "Ingathering, Reclaiming the Inactive." This is a module designed to reach out in Christian love to inactive resident members to reclaim them in Christ.

Church Training will undergo a name change to DISCIPLESHIP if adopted at the June 1990 Southern Baptist Convention.

The Baptist Doctrine Study for 1989 was "The Doctrines Baptist Believe" and was written by Dr. Roy T. Edgeman.

A new Church Training Records System has been introduced. It will simplify the old five point Record System.

The Baptist Doctrine Study for 1990 will be the "Doctrine of the Christian Hope."

The Deacons, Pastors and Spouses Fellowship 1989

The Deacons, Pastors and Spouses of the Tuckasegee Baptist Association met four times this past year.

Ochre Hill was host for the first meeting held October 28, 1988. This was a special recognition service for our senior Deacons and Pastors. The Reverend Glen Blanton, Reverend Alexander Pasetti, Lunie Pangle and Robert Smoak were presented plaques for their many years of Christian service. Twenty churches were represented with 120 people in attendance. Officers for the new year were introduced: Haven Ensley, Chairman; Ronnie Henderson, Time and Place; Lois Ensley, Secretary; Clifford Cagle, Treasurer; Harry Vance, Music Director; and Clyde Vance, Program Chairman.

The second meeting was held at Scotts Creek Baptist Church, January 27, 1989. The Liberty Baptist Church choir brought the special music and their pastor, the Reverend Eugene Smith, brought the inspirational message. There were 103 present with 16 churches represented. A donation was presented to the Reverend Ray Houston to help finance his mission trip to Brazil.

Webster Baptist Church was host for our third meeting, April 26, 1989. There were 92 in attendance with 15 churches represented. Jimmy Buchanan, a new Deacon, attended for the first time. The Jamison Family singers were back by popular demand and presented a program of fine gospel singing.

Our last meeting for the year was held at Rockdale Baptist Church, July 28, 1989. John Reid, Director of Missions, recognized Mrs. Annie Hoyle and presented her with a copy of the 1987-1988 Minutes of the Tuckasegee Baptist Association that were dedicated to her for her many years of outstanding Christian service.

She received a standing ovation. Mark Haskett was recognized as a new deacon attending for the first time. Speaker for the evening was James Rogers from the First Baptist Church, Sylva, where he serves as a Deacon and a Sunday School Teacher.

A word to all churches in the Tuckasegee Association: you can host the Deacons, Pastors, Spouses Fellowship. All we need is for you to invite us. We realize some of our churches do not have facilities to provide a meal. Don't let that stop you. We will be more than happy to stop "feasting" and start "fasting" in order to fellowship with more of our churches.

Haven Ensley, Associational Chairman

Evangelism Committee

The Evangelism Committee has met and has recommended that the Association participate in the **HERE'S HOPE SIMULTANEOUS CRUSADE** next April 22-27. A goal of 20 churches participating in the revival has been established.

It has been the long standing policy of our churches to leave revival planning and scheduling up to the pastor. Thus this will largely be up to the pastor to participate in the Here's Hope revival.

The Evangelism Committee affirmed the work of the Youth Crusade, Celebrate Christ Crusade, that we conducted last March. Several decisions were made for Christ.

THE EVANGELISM COMMITTEE
Mike Farmer, Ben Cabe,
Joe Yelton, Johnny Ray Davis

Music

The music year has been a good one as far as we can tell. The music members have increased. Your music director has stayed busy. We led the music for the Executive Committee, the Deacons' quarterly meetings and on other occasions that arose. We attended the Key Leadership Conference in Ridgecrest. We had the music for the meetings at the Nursing Homes. As a Supply Pastor, I worked with the music and also worked with the Youth Director in the Youth Sing in March. We are now planning a county wide sing for March 1990. All in all we have had a very busy and profitable year.

Harry Vance, Associational Music Director

Ordination Committee

The Ordination Committee of the Association met twice this year. At the request of the New Savannah Baptist Church, Pastor Barry Almand was examined and recommended for ordination. He was examined on March 9 and ordained March 6 at the Ochre Hill Baptist Church.

At the request of the New Hope Baptist Church, Pastor Keith Ashe of Big Ridge Baptist Church was examined August 8 and ordained September 3.

The purpose of the Ordination Committee is to examine candidates for the ministry of the gospel. This is always done at the request of the local church. Candidates are examined on their knowledge of Baptist Doctrine, Polity and Ethics. Use of the Ordination Committee helps assure Associational churches that their men are sound in their thinking and cooperative in their relationships. The Ordination Committee only has the power to recommend. Each local church does the ordination.

Royal Ambassadors Report 1988

During the year we had several outstanding events take place. First there was the RA Racer Competition on the Associational level. This was a big success. The winners went to the State Level Race which was held during the Lad/Crusader Congress. Our winners came close to winning on the State Level. We were very proud of these young men and their accomplishments. Next, we had an Air Rifle competition which was won by a girl.

This was followed by RA Field Day. This event also turned out well. Finally, we had a "Pool Party" at the Sylva Pool with several participants. This was fun indeed.

As Director, I would encourage you to have your boys join up with us next year. We will be doing some of the same type events another year plus many others.

Also, I would like to encourage Counselors and Leaders to plan to attend a very helpful training session. Training sessions can be very helpful and beneficial in helping you in your planning of activities.

Please remember to keep the Association, the Royal Ambassadors Program and the Director (me) in your daily prayers. Pray that we may always keep within God's Will and will have the strength and courage to carry it out.

If you have questions about the Royal Ambassador Program, please call me.

Mike Moses, Associational RA Director

Single Adults

We have had an interesting year with our group. We have only been organized approximately two years, however, we are already beginning to function as an experienced group. This past year we had four meetings.

The fall meeting was a covered dish supper held at the Baptist Center. The program and decor centered around fall colors and harvest subjects. Christmas and spring meetings were similar. Most programs have consisted of a devotional period, group singing, homemaker tips for singles, and seasonal group games.

Recently for the summer meeting this group traveled to Asheville during the Belle Chere festival. This was an all day event and a great time was had by all.

A service project is being planned during the Christmas Holidays to benefit the elderly citizens or shut-ins. The next meeting coming up will be held at the Baptist Center, Fridays at 6:30 p.m. The respective dates are October 20 and December 1.

Keith Campbell
Associational Singles' Director

Time, Place and Preacher 1990

October 11, 1990 Ochre Hill Baptist Church
Preacher: Tommy Lamb, Alternate: J.D. Grant
October 12, 1990 Webster Baptist Church
Preacher: Joe Yelton, Alternate: Charles Dean

Jack Hinson, Chairman
Alex Pasetti, Ray Houston

Vacation Bible School

The North Carolina VBS Clinic was held in March at the Beverly Hills Baptist Church in Asheville. Eight members of the Associational VBS team attended.

The Associational VBS Conference and Clinics were held on April 11 at the Associational Building, April 24 at the New Hope Baptist Church, and May 8 at the Ochre Hill Baptist Church. Twenty-seven churches were represented by 105 people. This was an increase of 11 churches and 50 people or a 95 percent increase. As of this report a total of 27 churches have shared their reports with the Associational Office. Totals of these reports are as follows: ENROLLMENT - 1,345 with 38 professions of faith. Gifts to the Cooperative Program were \$1,786.

Tom Crowder
Associational VBS Director

Woman's Missionary Union 1989

Launching Century 2 reminds us that missions education has not only been somewhere, but is headed, full speed ahead, into an exciting second 100 years. Entering a new century is challenging with new goals, new dream, new vision, and new horizons laying before us. Much about the future is unknown, but some things are known... the WMU's purpose remains the same: to promote and support missions by teaching missions; engaging in mission action and personal witnessing; supporting missions through giving and praying; and interpreting and undergirding the work of the church and denomination. It is a

certainty that methods for accomplishing that purpose will change to meet the needs of new decades. We may also see change in our materials and our structure in order to involve today's woman.

Your WMU Council has been supportive and dedicated to challenging the women and our churches to meet the tasks of missions with new ideas and methods.

Leaders for 1989-90 are:

Director Shirley Kool, 584-5066
Assistant Director Janice Burnette, 586-6819
Baptist Women Director Freda Queen, 586-2871
Assistant Baptist Women Director Annie Hoyle, 293-5354
Baptist Young Women Director Virginia Pangle, 586-4896
Assistant Baptist Young Women Director Debbie Hooper, 586-2578
Acteens Director Ginny Middleton, 586-5920
Assistant Acteens Director Kay Freeman, 586-3596
Girls in Action Director Sarah Davis, 586-5400
Assistant Girls in Action Director Cheryl Aldridge, 586-6416
Mission Friends Director Geraldine Jones, 293-9235
Assistant Mission Friends Director Rita Norris, 586-2801
Mission Action Director Ada McCoy, 743-2989
Secretary/Treasurer Linda Brown, 586-6131
Enlistment Director Aileen Green, 586-4677

These ladies are trained and ready to serve your church. If you are interested in beginning or reorganizing one of these groups, please call upon them. They will come into your church as a resource person with literature, ideas, expertise and enthusiasm.

Quarterly meetings were held for inspiration, training and helping us to become more aware of mission opportunities. A Leadership Training workshop was led by Associational officers; a fall prayer retreat was held; a Personal Witnessing workshop was a good start to WMU Focus Week; as an introduction to our own United Christian Ministries, Pat Orr from Brevard's Sharing House spoke at our annual meeting last spring. To help keep us informed of activities and mission opportunities, a page of "Mission Matters" has been included in the Association Newsletter.

Our Mission Action was centered around the missions education night of the Baptist Student Union. Also, donations were sent for curtains for the United Christian Ministries. We participated in the Food Lion project "Karts for Kids" in conjunction with the Baptist Children's Homes. An on-going project has been in sending supplies to the Sao Paulo WMU.

It is alarming to see fewer churches actively participating in Associational missions although our membership is up... 18 (-3) churches with 313 (= 34) members. It has been exciting to have another Baptist Young Women's group organize bringing that number to three. Perhaps as we launch into another new year, you can resolve to join us as together we "REACH, TEACH and TOUCH."

Shirley Kool
Associational WMU Director

Youth Activities 1989

The youth of the Association have had opportunities to participate in the following activities during the year:

NOVEMBER 11 and 12 - A WOW retreat at Truett Baptist Camp led by Kay Frazier.

DECEMBER 8 - Youth Council meeting at Wilkesdale Baptist Church led by Dan Ward.

FEBRUARY 7 - Zone 7 meeting at Wilkesdale Baptist Church to activate Zone 7. Youth Council discussed and prayed for.

MARCH 12-15 - The Crusade for Christ Crusade was held at Southwestern Technical College. The Reverend Fred Lunsford was the speaker. Seven souls were saved with 11 rededications.

APRIL 6 - Group 7 met at Jarrett Memorial Baptist Church with Doris Beasley to finalize plans for May.

MAY 12 - Fifteen youth and four adults with four churches represented to make plans for summer activities.

JUNE 24 - "Held Splash Down" at Sylva Pool. Matt Fore, slight of hand magician, entertained. Forty in attendance.

A Youth Singing is now in the planning stages.

Geraldine Jones
Associational Youth Director

Institutional Reports

Baptist Children's Homes of North Carolina, Inc.

Like salmon, Baptist Children's Homes this year struggled upstream to get ahead of the problems that plaque America's children and families.

While maintaining group care services in place since 1885, BCH also inaugurated two innovative services in Care House, the first home for teenage mothers and their babies we know of anywhere and the Philpott Parent Aide Program.

Care House, where five teenage mothers will learn to parent their babies, was dedicated June 4 during services at Lenoir's Lower Creek Baptist Church. Also dedicated then was the Marguerite Noel Home for Girls, our second behavior change home.

Until Care House, a young girl who had a child often could not return home. If she wanted to bear her child and keep it, the child had to go to one foster care home and the young mother to another until she was of age.

The Noel Home, like Moody Home in Franklin, cares for girls whose difficult behavior prohibits them from living at home or in traditional group care settings.

On June 21 BCH dedicated the Philpott Parent Aide Program in Davidson County. Trained volunteers will establish relationships with homes labeled "at risk" for child abuse. The volunteer will be counselor and friend, critic and confidant to help families spot and correct areas that lead to child abuse or neglect.

With renewed emphasis on church communication, BCH named two men to act as directors of church relations and planned giving. Charles Tanner and Bill Morrow will arrange BCH speakers for your church and help your members with estate planning.

BCH continues to implement "intentionalized services" according to the long-range plan it adopted in April 1988. Peer culture therapy is being utilized on children at Odum Home and Noel Home and is being phased in at Mills Home. This program makes the children more responsible, both for themselves and others in their cottage.

BCH continues to garner popular support with North Carolina Baptists who contributed \$1.52 million through the Cooperative Program last year. In the 1988-89 fiscal year, more than \$1 million has been received in bequests.

The executive committee of the General Board of the Baptist State Convention of North Carolina this year declined to adopt a report of a special study committee that would have drastically reduced BCH's share of the Cooperative Program. The committee recommended, and the General Board supported, a return of individual special offerings to Baptist Children's Homes, Baptist Retirement Homes and Baptist Hospital. All three social services agencies support such a move, which would eliminate the Homes and Hospital Offering they share. The state convention will vote on that proposal in November.

BCH, which began as an orphanage in Thomasville in 1885, operates four group care campuses, eight emergency care homes, a home for unwed mothers, a teen mother/baby home, two behavior change homes for girls, therapeutic camping and a model child development center. It has work in 17 locations across the state, serving more than 1,000 children and families each year.

All campuses and facilities welcome involvement by local churches, RAs, GAs, WMUs and Sunday School departments. Baptist support is strong for children and families and we pray it will continue to strengthen as needs grow every day.

Michael C. Blackwell, President

North Carolina Baptist Colleges

CAMPBELL 1887	CHOWAN 1848	GARDNER-WEBB 1905	MARS HILL 1856
MEREDITH 1891	WAKE FOREST 1834	WINGATE 1895	

Baptists and their colleges have been doing Christian education together for a long, long time. Look at those date listed with each college above. When they are totaled, the cumulative number of service years for our seven colleges is 807! North Carolina Baptists have grown up with their colleges, so much so that it is difficult to imagine our total mission program without them. During the 1988-89 school year there were 18,534 students and 2,249 faculty and staff engaged in the programs of Baptist colleges.

If you should ask our college leaders what is uppermost on their minds these days, you would get an answer such as this: "Christian education, Baptist students and Cooperative Program support." A sentence or two about each of these will complete this report.

CHRISTIAN EDUCATION. There are large and important differences that belong to Baptist colleges. They are smaller, friendlier campuses where Christian community is present and encouraged and where education and the Christian faith are compatible.

BAPTIST STUDENTS. Young people from our churches are encouraged to apply to Baptist colleges. Pastors and parents can help students with their life plans when they guide them toward Baptist schools. Generous student aid and work study programs make it possible for any qualified student to attend a Baptist college.

COOPERATIVE PROGRAM. Your North Carolina Baptist colleges say "Thank you" for the generous dollar support through the Cooperative Program. Baptist dollars buy quality Christian education and make healthy institutions possible.

For more information write or call:
Council on Christian Higher Education
P.O. Box 1107
Cary, North Carolina 27512-1107
(919) 467-5100
1-800-222-8478

Baptist Hospital Report

The past year at Baptist Hospital has been characterized by growth in facilities and personnel, advancement in medical technology and continuation of the spirit of personal concern which springs from the hospital's Christian heritage and its denominational tie.

Occupation of the new North Tower is almost complete, increasing the hospital's bed capacity to 806. Construction of the Clinical Sciences Building is expected to be completed by 1990. The Medical Center Boulevard is currently being moved to make ready for

expansion of the Patient/Visitor Parking Deck. Two new helicopter pads, one for the Air-Care helicopter and a second for helicopters from other medical centers, will be located on top of the parking deck. The J. Paul Sticht Center on Aging will be built on the approximate site of the current helicopter pad. These new facilities will make it possible not only for our hospital to serve more people but to serve them better.

In recent months the hospital's Level One Trauma Center has seen further development of its critical care transportation system by adding to the helicopter ambulance service its own neonatal ambulance for critically ill infants. The CommView Computer System, developed jointly by the Department of Radiology and AT&T, digitizes images, stores large volumes of data and transmits the images via fiberoptic cable throughout the Medical Center and via satellite to other hospitals without any x-ray film. Some brain tumors can now be successfully treated by implanting a tiny radioactive pellet directly into the tumor. Other types of cancer can be treated by hyperthermia which carefully focuses microwaves to raise temperatures inside a tumor to 102 degrees to 105 degrees Fahrenheit to kill or injure cancer cells. A technique called Mohs Micrographic Surgery allows the removal of skin cancer with minimal damage to normal skin.

These and other advances in patient care attract patients from across the country and around the world. Last year the 22,100 persons admitted to Baptist Hospital came from almost every county in North Carolina, from 35 states, and from eight foreign countries.

The Department of Pastoral Care continues its ministries to: the patient in the hospital; the family and friends of patients; the medical staff who minister to the patient; the person requesting counseling in our centers in Winston-Salem, Fayetteville, Morganton, Charlotte, Rockingham, North Wilkesboro; the ministers who seek our courses in clinical instruction, equipping them for specialized and pastoral ministries.

Added to these are our "Pastors' Sabbath" and "Interim Church" programs, as we work closely with the North Carolina Baptist State Convention in addressing the needs of pastors and churches.

We renew our commitment to the faithful delivery of pastoral care, beginning in our Medical Center and reaching around the world.

Baptist Hospital continues to feel the effect of the health care personnel shortage, especially as it attempts to open new facilities. However, we do not have any beds closed due to shortages. The Code Blue Program in high schools of northwestern North Carolina and the appeal to Baptist youth through Acteens is also creating interest in health care careers.

During the past fiscal year Baptist Hospital received \$668,937.39 through the Cooperative Program and \$303,133.07 through the Homes and Hospital Offering, including church gifts directly to the hospital. The hospital staff and patients are grateful for the services made possible by these gifts.

Baptist Student Union Report WESTERN CAROLINA UNIVERSITY

JUST THE FACTS

- Baptist Student Union is a student-led, Christ-centered organization providing fellowship and programs designed to encourage well-balanced spiritual and social growth among college and university students.
- BSU is on 1,042 campuses with 964 volunteer and paid staff members, involving 142,839 students.
- In North Carolina, there are Baptist Student Unions on 42 campuses with 29 paid and 34 volunteer campus ministers, involving thousands of students.
- At Western Carolina University, Winston Hardman, Campus Minister, and Kendall Cameron, Intern, work with 180 students enrolled in BSU.

- Of these students, representing Southern Baptists and other denominations,
 - *70-100 attend a weekly worship meeting - PAUSE.
 - *30-40 attend bimonthly Missions Suppers feasting on meals provided by Tuckasegee WMUs.
 - *20-24 work at the Asheville Shelter during the year.
 - *24 spent their Spring Break ministering to Migrant children near Orlando, Florida.
 - *15-20 lead in worship and fellowship in area churches as part of Outreach Teams.
 - *20 develop leadership skills as student council members.
 - *16 are involved in the VOICE home visitation program.
 - *13 are serving in Summer Missions positions.
- The WCU BSU raised over \$1,800 to help support Summer Missionaries around the world in 1989.
- Students are also involved in dorm Bible studies, prayer meetings, one-on-one evangelism, ministry to international students, clown and puppet ministry, intramural sports, social gatherings and much, much more.

MORE THAN FACTS

The Baptist Student Union is a warm and loving group of students. A group of students that has a special place reserved for you. BSU provides a place to hang out and a people to belong to. A place "where everybody knows your name." Make us a part of your WCU experience.

Winston Hardman, Campus Minister
Kendall Cameron, Intern

C.J. Harris Hospital Chaplaincy

Jesus said "Heal the sick." And the church has been working for nearly 2,000 years to carry out that order.

We at C.J. Harris Community Hospital believe strongly in the spiritual dimension of healing. When we allow the Lord to love us, healing can come because love is the strongest force in the world. That same gift of love is experienced every day in the lives of individuals who get in touch with the Lord while they are in the hospital.

It is a great honor for me to be the Hospital Chaplain. I appreciate the privilege of serving the Lord in this work and am grateful to you for your financial support.

Reverend David Webb, pastor of Shepherd of the Hill Lutheran Church, is our new part-time Chaplain at Mountain Trace Nursing Center. David's love for the work is evidenced by the time he spends every week in visiting, teaching the Bible, and praying with the patients there. He is working closely with the staff to include varied activities as part of the ministry. He has scheduled a variety of weekly worship services with the help of the churches of Jackson County.

Reverend Tommy Lamb, pastor at Ochre Hill Baptist Church, completed a 13-week chaplain internship course last summer at the hospital. Tommy is a student at Western Carolina University and received 12 hours credit toward his degree by working as a Chaplain Intern in our Chaplaincy Ministry.

My ministry with the hospital staff continues to develop in counseling opportunities and teaching. I taught a six-week course, USING HUMOR IN THE HOSPITAL SETTING. Also, the operating room nurses of Western North Carolina invited me to speak on the topic LAUGHTER AND HEALING at their August meeting.

Our HELPER IN MISSION campaign was launched in August. This is an effort to strengthen our base of support for the Chaplain's Ministry by asking individuals to contribute as little as \$2.00 or as much as \$25.00 per month. This will enable us to expand

our services in pastoral care for lay-people and pastors. Thanks to the people who have joined us in this mission. Others are invited to participate. Contact me at the hospital for more information.

National Pastoral Care Sunday is October 22. Please pray for our Chaplaincy Ministry and call attention to our needs. Remember that we depend on your financial backing to continue in this ministry.

Another Pastoral Care Course for pastors is scheduled to begin in February 1990. Continuing education credit will be awarded those who participate. Cost is \$45.00 for the entire ten-week course including lunch and materials. Let me urge our pastors and wives to take advantage of this opportunity to become more effective agents for the Lord through the hospital ministry. You will receive registration information in the mail or call me at the hospital (586-7000).

We are still saddened by the loss of our friend, W.C. Hennessee, who died on July 15. He was a strong supporter of the Chaplain's Ministry. But we rejoice in the vision he had to help develop and broaden the work. Let us continue this good work in the name of the Lord that people may know Him.

Sincerely,
Jack Hinson, Hospital Chaplain

Baptist Retirement Homes of North Carolina, Inc.

This marks the 39th year of ministry by the Baptist Retirement Homes to the Baptist Older Adults of this State.

Charged in 1951 with the mission of providing residential care for "Aged Saints," the Homes provide care for Older Adults in five locations across the state (Albemarle, Asheville, Hamilton, Winston-Salem, and Yanceyville).

A new continuing care retirement community, Brookridge, located in Winston-Salem, will open for operation in the fall of 1989.

Recognizing the growing need for quality residential care for Older Adults, the Board of Trustees of the Retirement Homes has formulated a three-pronged long-range plan to meet this need.

- * To work with churches and associations in the development of regional continuing-care retirement communities in the West, the Piedmont, and the East.
- * To work with churches and associations in the development of "free-standing" residential housing (independent-living units, assisted-living units, and nursing-care units).
- * To work with churches and associations in the development of alternative forms of residential care for Older Adults (Respite Care, Adult Day Care, and Home Health Care).

One of the greatest challenges North Carolina Baptists face as they move into the 21st century is the question of how residential-living situations for Baptist Older Adults are to be provided.

With the support of North Carolina Baptists, the Retirement Homes sees his challenge as a wonderful opportunity for ministry.

Truett Baptist Camp

We have just completed Youth Week at Truett Camp. There were 73 that attended and more are making plans for the 1990 camp. J. Gilbert was their camp director.

Girls GA weeks were a great success this season. Pam Graham, the director, with the help of Stephanie Elliott did a good job. Eight girls were saved and numerous decisions were made for the Lord. A total of 140 girls attended.

Aud Brown is going to be the director for Boys RA Camp this year. Several registrations have come in for the two weeks of camp. We are anticipating a good time for the boys and their leaders.

We would like to thank each counselor and camp pastor for their time and efforts with the camp this season.

Plans are being made for a new building at the camp to be built if contributions can be made from our churches for the financing of the project to help house more campers.

We want to thank each church in the association for their prayers and support the past year to make it possible for your children to have a good time at the camp.

Respectfully submitted,
Richard Robertson, Camp Director

Agency Reports

American Bible Society

The churches and denominations of the United States are the mainstay of the American Bible Society's worldwide Scripture ministry. Conscious of the outstanding service which the Southern Baptist Convention has provided to the people of the world through your support of this ministry, we are happy to submit this report highlighting some of the Society's activities during 1988.

Opening new ways to the Word for people throughout the world is a challenge which grows in scope and urgency with every passing year. Many of the projects to which we commit ourselves each year are undertaken in faith—faith in God and in the generosity of concerned Christians in this county. The American Bible Society is sincerely grateful for the contributions, totaling \$251,951.11, received from your churches during 1988 and draws confidence from knowing that there are Christian communions such as yours who believe in the power of the Word of God and are committed to sharing it with people across the globe. Your partnership with us in the Bible cause enhances our own vision of what can be accomplished in response to the Scripture needs of our world.

Thank you.

Annuity

The Annuity Board continues to blaze trails in its effort to "serve those who serve the Lord." Goals set by the Annuity Board Trustees for 1989 include:

- 1) Developing a long term care plan suitable to Southern Baptist ministers and their families.
- 2) Working through the Church Alliance to provide an approved IRA.
- 3) Providing more choices to meet the needs for family insurance protection.
- 4) Continuing to work hard to control health care costs.
- 5) Developing materials on financial planning.
- 6) Continuing to make churches and ministers aware of retirement and insurance plans.

Significant progress has occurred in meeting many of these goals.

This is what is happening in North Carolina:

- 1) There have been 27 new members enrolled in the retirement plans during the period April 1 - June 30.
- 2) There have been 61 plan upgrades during this period.

- 3) There are now 2,162 North Carolina churches and associations contributing to retirement plans.
- 4) North Carolina has 1,892 signed Cooperative Agreements! More than any other state!
- 5) The number of churches participating at the old Plan A Level of \$33.34 has decreased from 439 to 92.
- 6) The average annuitant in North Carolina receives \$249.96 per month, up from \$234 last year.
- 7) North Carolina has 3,406 members making contributions to Annuity Board retirement plans.
- 8) There are 1,764 annuitants receiving benefits each month in North Carolina - \$440,929 each month.

It is exciting to think about what has been done but there is still so much to be done! Consider these facts:

- 1) Only 64 percent of our churches are participating in our retirement plans.
- 2) Of this 64 percent, many do not actually make contributions. The minister does this on his own. Small contributions make the annuitant's benefits small.
- 3) We have 151 churches that have signed the Cooperative Agreement, but still make no contribution.

We have 457 churches that are making contributions but still have not signed the Cooperative Agreement.

There is GREAT challenge still before us!

Jim Lambert
Administrative Associate for Minister Support

State Name: North Carolina

ASSOC. CODE	CHURCH OR ASSOCIATION NAME	EMP. NUMBER	MEMBER NAME
TCKSG	Tuckaseegee Baptist Association	*326334	J.D. Reid
TCKSG	Cashiers Baptist Church	*326306	L.G. Smith
TCKSG	Cullowhee Baptist Church	*326309	E.B. Chancellor
TCKSG	Cullowhee Baptist Church	326309	J.E. Yelton
TCKSG	Deitz Memorial Baptist Church	*326348	R.C. Blanton
TCKSG	East Sylva Baptist Church	*326311	C.L. Dean
TCKSG	First Baptist Church, Sylva	*326331	J.F. Allison
TCKSG	First Baptist Church, Sylva	326331	B.L. Blanton
TCKSG	First Baptist Church, Sylva	326331	M.R. Johnson
TCKSG	Hamburg Baptist Church	*326315	R.S. Christopher
TCKSG	Locust Field Baptist Church	*326351	C.E. Carnes
TCKSG	Lovedale Baptist Church	*326319	J.D. Grant
TCKSG	Mount Pleasant Baptist Church	*326346	E.H. Holden
TCKSG	New Hope Baptist Church	*326354	M.K. Moore
TCKSG	Ochre Hill Baptist Church	*326327	T.D. Lamb
TCKSG	Scotts Creek Baptist Church	*326330	L.V. Fish, Jr.
TCKSG	Webster Baptist Church	*326335	R.R. McCall

Asterisk Before Member Number Indicates Expanded Chapter.

Association Total: 14

The North Carolina Baptist Foundation

"Strengthening the Greater Service" had special meaning for the trust agency of the Convention during the past year. Noting the progress made during its 69-year history in undergirding the financial support for the Convention, its churches, institutions, and mission causes, the Foundation recommitted itself to greater service to these causes.

With concern that it performs its missions efficiently and that it involves more Baptist effectively in supporting the cause of Christ, the Foundation carefully embarked upon a capital campaign to secure funds for the construction of its own building to house its development and administrative offices.

Since its staffing in the early 1950s, space for the Foundation has been provided in the Baptist Building. With the consistent rapid growth in assets managed and services provided by the Foundation, the current space has become inadequate to properly perform the on-going work of the agency. We are pleased to report that the majority of the funds necessary to construct the new building have been secured. The new building will be erected beside the Baptist Building in Cary and we are hopeful that it will be ready for occupancy by the end of this year.

In engaging in this project, it has been of utmost importance to our Board of Directors and Staff that the on-going responsibilities of the Foundation not be neglected during the campaign. Indeed, the need for increased financial support for Baptist institutions, missions, and other ministries has not diminished, and has remained our first priority. It is essential that more individual Baptists become aware of the possibility of sharing the message of Christ beyond their lifetime. Seeking to fill this role, the Baptist Foundation is the only entity which receives endowment gifts for any and every Baptist cause. Through trust and endowment funds, established by individuals, churches, and associations, the principal is invested and income is paid regularly and perpetually to the cause or causes named by the donor.

We are continually grateful for the support of Baptists across the state who support the Foundation.

Respectfully submitted,
Edwin S. Coates, Executive Director

The Biblical Recorder

After more than 150 years as the Baptist paper serving North Carolina Baptists in particular and Southern Baptists in general, the *Biblical Recorder* is launching a new era of service and ministry for the decade of the '90s and the 21st Century.

We have just completed a year-long readership survey at substantial cost and investment of time and energy, but we believe it is going to be helpful in charting the course for future service in our family of faith.

Baptists must have a single source of news and information upon which to make decisions and evaluate ministries. The *Recorder* is that source; nothing else matches the paper as a single resource of news, information, inspiration and challenge in our mission efforts together.

Competition for reading time is keen. Baptists are facing more and more demands upon their time and resources. The *Recorder* is never a luxury; it is a necessity if we are to work together on this complex and demanding age.

We have exciting plans for the future. More feature articles about North Carolinians, more articles geared to youth, family and women. An even greater focus on laypersons will continue after the beginning we made in 1988.

And we are trying to work out the mechanics of church pages where by we can save churches time, money and staff work by offering them a page in the *Recorder* in lieu of their

weekly newsletter. Watch for more details in the *Recorder* in the near future concerning this time and money-saving device for the churches (and associations).

We have a large readership now but we want more—that is the purpose of the paper. We serve hundreds of thousands of Baptists but we want to serve even more. More than 60 percent of our news is from North Carolina now, but we want a higher percentage soon!

The most important thing facing us at this point is to get the paper into more Baptist homes than ever before. Will you help us? Speak a good word for the paper and urge others to subscribe and read it also. For more information on rates and special plans for subscribing, contact:

The *Biblical Recorder*
232 West Millbrook Road
Raleigh, NC 27609

Christian Action League

When the 1989 session of the General Assembly of North Carolina convened on January 11th, the first bills to be introduced were three lottery proposals; one in the Senate and two in the House.

Such gambling legislation has become an annual event for the last six years. However, the pressure for establishing a state-wide lottery was stronger this time around due to two factors: 1. Virginia has started a lottery, and 2. Revenues were very tight, and some legislators were looking for some "easy" money to grant state employment and school teachers a pay raise.

The pro-gambling lobbyists and their favorite legislator, Senator Kenneth Royall (Durham) were successful in securing passage of lottery legislation in the Senate.

Senator Royall, one of the most powerful members of the Senate, used his political "clout" to keep the bill in committee until the closing days of the session.

He admitted to the media that he did not want the lottery to get tied in with the budget proposals. After the money bills had passed and the legislature was ready to go home; then, he made his move to put the lottery bill on a "fast track."

No time was left to call for a public hearing to give rank-and-file voters the opportunity for their input.

After the Senate passage, the gambling proposal hit a "snag" when House Speaker Joe Maveretic let it be known that the House would not delay the 1988 adjournment to take up the proposal.

The issue cannot be considered until the legislature convenes for its 1990 session on May 22, 1990.

This gives six months to solicit opposition to the measure from the membership of the N.C. House.

Contact your N.C. House member and secure his or her opposition to Senate Bill 4, the Lottery Act.

A lot of prayer, time, and energy has been exerted in the current legislative session to defeat any legislation; to prevent any erosion of our liquor laws; and to support efforts to strengthen our drunk driving statutes.

A Legislative Study Committee and the Governor's Highway Safety Committee held hearings throughout the state during the past year to get citizen input on ways to make our highways safer. As a result of these sessions, a Safe Roads Study proposal was introduced that consisted of the following features: 1. lower the breathalyzer threshold from .10 to .08 for drivers of motor vehicles; 2. ban open containers of alcoholic beverages in motor vehicles; 3. increase fines for drunk driving; and 4. establish a .04 standard for operators of commercial vehicles (bus and truck drivers). The House passed the bill, but the Senate Conference Committee members refused to accept the proposals. The bill can be considered in the May 1990 session.

Even with such a busy legislative agenda the League has assisted in numerous liquor elections across the state.

We are hearing a lot of voices talking about declaring WAR ON DRUGS. U.S. Surgeon General C. Everett Koop has given our nation some words of wisdom. "It isn't ginger ale we're talking about. It's alcohol, the most widely abused drug. In the alleged war on drugs, alcohol enjoys a battlefield exemption. The United States will one day have to choose between alcohol and health . . . because we can't have them together."

Amazingly, the pulpits of America have become silent in so many of our churches concerning this NUMBER ONE ADDICTIVE DRUG. May this condemnation not be laid on the steps of the churches of your association.

The Christian Action League is ready to stand with you in this ministry of Applied Christianity as we confront the moral and social evils of today's world.

Joe E. Lennon, President
Coy C. Privette, Executive Director

The Gideons International

The Gideons International is composed of more than 90,000 Christian professional and business men in 140 countries. With the help of the local churches here and throughout all 140 countries, the Gideons are placing and distributing more than two million scriptures per month. Funding to purchase the scriptures comes from three sources: (1) local church offerings; (2) the Faith Fund Gideon donations by the individual members; (3) and the Memorial Bible contributions. All monies donated to the Gideons go toward the purchase of scriptures. The administrative costs of the organization are paid by the individual members.

The Jackson County Gideon Camp, one of 5,000 local camps, was founded in 1952. The present camp enrollment is 22 members. It has been the camp's pleasure to share a Gideon presentation in more than 38 churches during the past year. Members have also presented scriptures to the fifth grade students in Jackson County, as well as distributing more than 1,500 scriptures at Western Carolina University and Southwestern Community College. Gideons have also kept check to see that Bibles are in all hotel and motel rooms in Jackson County. The Jackson County Camp has received approximately \$12,000 during 1988 to be used for the purchase of scriptures.

Harry Griffen, Camp President

Financial Reports

Stewardship Report

"The earth is the Lord's and the fulness thereof; the world, and they that dwell therein." Psalm 24:1

The Biblical basis for stewardship begins with the truth that God is creator and owner of everything. That means He owns me and everything I have. As a Christian, it then becomes my responsibility to be a manager of all God has given me. To be a steward is to be a manager.

With that as a Biblical basis, the Christian asks: "How much of the resources that have been given to me, money and time, shall be returned to Him through my support of the local church?" The Bible teaches a tithe or a tenth as the starting place. Some people can give more. The church must also ask: "How shall we spend the resources that will support the work of God?" One must understand that God has work to do in the local community,

in the Association, in the State and Nation, and the world. The method to support His work is the church's financial support to the Association and through the Cooperative Program. To support missions is to be in the will of God.

Associational Financial support from the churches has broken all records this year. With one month yet to be reported we have already received 99.18 percent of the total budget. The previous record was last year when 79 percent of the budget was met by the churches.

While this is great cause to celebrate, let us not be unaware of the challenges of stewardship development both in the church and the Association. Hopefully each church will look at their own level of giving and make a commitment to increase that gift according to their ability.

The Tuckasegee Baptist Association is **CHURCHES WORKING TOGETHER** in a cooperative spirit to accomplish God's work in Jackson County. We join with the churches and with the churches of other denominations in doing this. But ours is a special relationship that places special responsibilities on us because of our numbers and of our influence. My **CHALLENGE** is for each church to intentionally develop stewardship education in mission giving and to include the Association in its mission gifts.

John Reid

Budget Report AUGUST 1989

	Month	To Date	Budget	Balance	Percent Spent
	\$	\$	\$	\$	%
I. DIRECTOR OF MISSIONS					
Director's Salary	790.33	8,693.63	9,484.00	790.37	91.67
Director's Auto	292.67	3,219.37	3,512.00	292.63	91.67
Retirement (Director)	117.33	1,290.63	1,408.00	117.37	91.66
Housing	383.00	4,213.00	4,596.00	383.00	91.67
Insurance	83.33	916.63	1,000.00	83.37	91.66
II. SUPPORT STAFF					
Secretary	316.66	3,483.26	3,800.00	316.74	91.66
Hon. for Treasurer		0.00	150.00	150.00	0.00
Hon. for Clerk		0.00	150.00	150.00	0.00
III. PROPERTIES					
Property Insurance		649.00	650.00	1.00	99.85
Telephone	67.66	974.52	960.00	-14.52	101.51
Electricity	64.91	1,177.83	1,400.00	222.17	84.13
Office Equip. & Repairs		802.74	800.00	-2.74	100.34
Maint. & Upkeep		323.48	350.00	26.52	92.42
IV. PROMOTIONAL					
Office Supplies	27.50	469.86	800.00	330.14	58.73
Postage	90.00	759.00	800.00	41.00	94.88
Conferences & Conv.		200.00	200.00	0.00	100.00
Sunday School	24.78	82.29	200.00	117.71	41.15
Church Training		152.02	200.00	47.98	76.01
Youth		207.66	550.00	342.34	37.76
VBS		233.09	200.00	-33.09	116.55
Evangelism		19.32	400.00	380.68	4.83
Brotherhood		35.00	100.00	65.00	35.00
RAs		286.41	315.00	28.59	90.92
Senior Citizens		0.00	100.00	100.00	0.00

Music		45.00	100.00	55.00	45.00
Missions Council	300.00	300.00	300.00	0.00	100.00
Christmas Float		0.00	75.00	75.00	0.00
V. PROGRAMS FOR PROGRESS					
Assoc. Leader Train.		210.00	250.00	40.00	84.00
Assoc. Minutes		200.00	200.00	0.00	100.00
Library & Audiovisuals	43.61	65.15	100.00	34.85	65.15
VI. MISCELLANEOUS					
Miscellaneous		24.19	150.00	125.81	16.13
TOTAL	\$ 2,601.78	\$29,033.08	\$33,300.00	\$4,266.92	87.19%
RECEIPTS	3,771.97	33,025.82	33,300.00	274.18	99.18
CHNGE. IN CASH BAL.	\$ 1,170.19	\$ 3,992.74	\$ 0.00		
BEGINNING CASH BAL.	7,525.02	4,702.47	4,702.47		
ENDING BALANCE	<u>\$8,695.21</u>	<u>\$ 8,695.21</u>	<u>\$ 4,702.47</u>		
BRAZIL MISSIONS PRO.	<u>1,696.34</u>	<u>1,696.34</u>			

BUILDING FUND

RECEIPTS	\$ 736.85	\$ 1,522.11
CHNGE. IN CASH BAL.	736.85	1,522.11
BEGINNING CASH BAL.	6,236.01	5,450.75
ENDING CASH BALANCE	<u>\$ 6,972.86</u>	<u>\$6,972.86</u>
TOTAL CASH IN BANK	\$17,364.41	\$17,364.41
Cashiers designated giving YTD		\$ 700.00
Hamburg designated giving YTD		\$1,500.00

Jesse Flake, Associational Treasurer

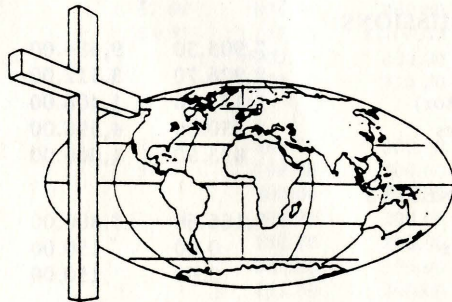
Adopted Budget 1989-90 TUCKASEEGEE BAPTIST ASSOCIATION

	Amt. Spent To Date (7/31/89)	Original Budget 1988-89	Recommen. Budget 1989-90	Increase/ (Decrease)
	\$	\$	\$	\$
I. DIRECTOR OF MISSIONS				
Director's Salary	7,903.30	9,484.00	9,992.00	508.00
Director's Auto	2,926.70	3,512.00	3,512.00	0.00
Retirement (Director)	1,173.30	1,408.00	1,479.00	71.00
Housing & Utilities	3,830.00	4,596.00	4,800.00	204.00
Insurance	833.30	1,000.00	1,232.00	232.00
II. PERSONNEL BENEFITS				
Secretary	3,166.60	3,800.00	4,008.00	208.00
Hon. for Treasurer	0.00	150.00	150.00	0.00
Hon. for Clerk	0.00	150.00	150.00	0.00
III. PROPERTIES				
Property Insurance	649.00	650.00	650.00	0.00
Telephone	906.86	960.00	1,060.00	100.00
Electricity	1,112.92	1,400.00	1,400.00	0.00

Office Equip. & Repairs	802.74	800.00	1,000.00	200.00
Maint. & Upkeep	323.48	350.00	200.00	-150.00
IV. PROMOTIONAL				
Office Supplies	442.36	800.00	800.00	0.00
Postage	669.00	800.00	850.00	50.00
Conference & Conv.	200.00	200.00	500.00	300.00
Sunday School	57.51	200.00	200.00	0.00
Church Training	152.02	200.00	200.00	0.00
Youth	207.66	550.00	550.00	0.00
VBS	233.09	200.00	300.00	100.00
Evangelism	19.32	400.00	400.00	0.00
Brotherhood	35.00	100.00	100.00	0.00
RAs	286.41	315.00	450.00	135.00
Senior Citizens	0.00	100.00	100.00	0.00
Music	45.00	100.00	100.00	0.00
Missions Council	0.00	300.00	300.00	0.00
Public Rel./Jr. Billboards	0.00	75.00	100.00	25.00
V. PROGRAMS FOR PROGRESS				
Assoc. Leader Train.	210.00	250.00	125.00	-125.00
Assoc. Minutes	200.00	200.00	0.00	-200.00
Library & Audiovisuals	21.54	100.00	75.00	-25.00
VI. MISCELLANEOUS				
Miscellaneous	24.19	150.00	225.00	75.00
TOTAL	\$26,431.30	\$33,300.00	\$35,008.00	\$1,708.00
RECEIPTS	29,253.85	33,300.00	35,008.00	1,708.00
CHNG. IN CASH BAL.	2,822.55	0.00	0.00	
BEGINNING CASH BAL.	4,702.47	4,702.47	7,525.02	
ENDING BALANCE	\$ 7,525.02	\$ 4,702.47	\$ 7,525.02	

Notes: Total Budget Increase: 5.13 %
 Director's Increase: 5.08 %
 Secretary's Increase: 5.47 %

Approved by Finance Committee 8/8/89



Constitution

(Revisions: August 16, 1957; August 16, 1975; August 19, 1978; August 17, 1979;
 August 15, 1980; August 13, 1982; August 17, 1984; August 16, 1985;
 August 22, 1986; August 1987; 1988 changes indicated with *.

ARTICLE I — NAME

The name of the body shall be the Tuckaseegee Baptist Association.

ARTICLE II - OBJECTIVES

The purpose of the association is to be a fellowship of churches on mission in our setting. The specific objectives of the association are as follows:

1. To promote harmony, understanding and spiritual power between the churches.
2. To afford and promote a larger fellowship of Christians in the work of Christ.
3. To provide such programs, projects and organizations as will strengthen the churches and assist them in achieving their goals and objectives.
4. To discover needs which cannot be met effectively by churches individually and to coordinate the use of resources in meeting these needs.
5. To encourage support by every church for the mission causes of the association, the North Carolina Baptist Convention, and the Southern Baptist Convention.

ARTICLE III - AUTHORITY

SECTION 1. The association shall have the power to elect and install its officers in whatever manner the body may deem expedient.

SECTION 2. The association shall have power to recommend measures of usefulness and guidance to our churches in matters of organization, ordinations and questions of doctrines and discipline.

SECTION 3. The association shall have no power to infringe upon the right of local churches as sovereign and independent bodies.

ARTICLE IV - MEMBERSHIP

SECTION 1. The association shall be composed of regularly constituted Baptist churches in cooperating fellowship with the Southern Baptist Convention and following the teachings of the New Testament.

SECTION 2. The association shall be the sole judge of its membership and may receive or reject churches applying for membership therein at its pleasure. Churches applying for membership shall agree to come under the watch care of the association for one year. It is understood that during this period of watch care the church shall be entitled to all rights and privileges of the association except those of voting.

Applications for membership shall be presented to the Credentials Committee of the Association. The applications will consist of a letter from a Constituted Church stating their desire to affiliate with the Tuckaseegee Baptist Association. The Credentials Committee as a part of the review process may invite the requesting church to a conference to discuss its history, its missions strategy, and any other information that may be pertinent to the application. The Credentials Committee may then approve the application and recommend them to the Executive Committee. The Executive Committee may by a simple majority vote accept the requesting church to come under the watch care of the association for one year. It is suggested that any church under watch care participate in the missions program of the association. At the end of the year the church may be voted in as a member of the association with full privileges by a two-thirds vote of the messengers present and voting at the Annual Meeting of the association, provided that the church submits an acceptable letter and at least one messenger be present at the meeting.

SECTION 3. Any church may withdraw from the association at its pleasure and should notify the association of this action in writing. Such action will be recognized by the association at the next annual meeting.

SECTION 4. It shall be the duty of each church to furnish the associational clerk, before each annual session, an annual letter, the forms provided by the associational clerk giving the information requested as is applicable to each church situation.

SECTION 5. The association may withdraw from any church which has become unscriptural in its doctrine or practices by a two-thirds majority vote of the messengers present and voting at the annual meeting. Such a vote is to be taken by written ballot.

ARTICLE V - MEETINGS

SECTION 1. The association shall hold its annual meeting on Thursday and Friday preceding the third Sunday in OCTOBER. Special meetings of the association may be called by the Executive Committee provided two weeks written notice is given to the member churches.

SECTION 2. Each church shall be entitled to be represented at the annual meeting by four messengers. Churches with more than 100 resident members shall be entitled to an additional messenger for each additional 50 resident members as determined by the church or fraction thereof and not to exceed 10 messengers from any one church.

SECTION 3. Churches are requested to elect their messengers and alternates in conference to attend the annual meeting.

SECTION 4. In case of internal dissension in a church and two parties coming to the association, each claiming to represent the church, neither party shall be seated until the question is decided as to which party is in union with the association. The decision is to be made by a majority of the messengers present and voting.

ARTICLE VI - OFFICERS

SECTION 1. General officers of the Association shall be: Moderator, Vice Moderator, Clerk, Assistant Clerk, Treasurer, Assistant Treasurer, Historian, Parliamentarian, and Assistant Parliamentarian. Program Leaders shall be Sunday School Director, Church Training Director, Music Director, Chairman of Evangelism Committee, Seminary Extension Director, Chairman of Missions Committee, Director of Missions, Trustees, Pastor Conference President, Youth Director, Stewardship Director, Vacation Bible School Director, Woman's Missionary Union Director, Brotherhood Director, Deacons Chairmen, Senior Adult Director, Singles Ministry Director, and such other officers as the Association may desire to elect.

Associational representatives will be elected for the following institutions and agencies: (1) Truett Camp, (2) Baptist Children's Homes, (3) Baptist Hospital, (4) North Carolina Baptist Homes, Inc. (Homes for Aging), (5) *Biblical Recorder*, (6) Christian Education, (7) Annuity Board and other representatives as may be deemed appropriate and elected by the association.

SECTION 2. With the exception of the director of associational missions and trustees, the terms of office for all officers of the association shall be for one year with the privilege of continuing re-election. The moderator and vice moderator shall not be eligible for re-election but one year in succession. (1) The number of trustees shall be three. (2) The term of service should be for three years, with the term of only one expiring each year. In the first election of trustees the term of service for one should be three years, another two years, and the other one year. (3) Upon the expiration of term of service the trustee may or may not be re-elected for another term of three years.

Each term of office shall begin with the close of the annual session. The Associational Financial year will begin at the close of the Annual Meeting.

Concerning termination of employment, the resignation shall be in writing and presented to the Executive Committee at least 30 days before it is to take place. The Executive Committee may terminate employment by giving 30 days notice in advance.

The Executive Committee shall give full supervision and guidance to the work of the Director of Missions in planning, promoting and financing his work.

ARTICLE VII - DUTIES OF OFFICERS

SECTION 1. The Moderator shall preside and maintain the order of all meetings of the association and Executive Committee. He shall serve as ex officio member of all committees of the association.

He shall appoint the Committee on Committees and all other committees pertinent to the operation of the body not named by the Committee on Committees in its regular report.

SECTION 2. The Vice Moderator shall assist the moderator and shall preside in the absence of, or at the pleasure of the moderator.

SECTION 3. The Clerk shall keep a complete and accurate record of all transactions; shall prepare a "Book of Reports" to be distributed to messengers at the beginning of each day's session of the annual meeting; and shall cause to be printed minutes concerning the records made.

*The clerk shall distribute to the clerk of each church in the association, blanks for the preparation of the church letter as soon as they are received from the state convention. This form is to be returned to the clerk of the association not later than two weeks prior to the meeting of the body.

An Assistant Clerk shall work with the clerk in preparing "The Book of Reports."

SECTION 4. The Treasurer shall receive and dispense by the order of the Executive Committee of the association while in session, the money of the treasury and make a complete report at the annual meeting and a current report at each Executive Committee meeting.

An Assistant Treasurer shall be elected to assist the treasurer by request and to serve in the event the Treasurer resigns or is ill or unable to function.

SECTION 5. The Historian shall keep the records of the association up-to-date.

SECTION 6. The Parliamentarian shall upon the request of the presiding officer of the body advise and assist the association with respect to all matters involving parliamentary procedure.

An Assistant Parliamentarian shall be elected. The Parliamentarian and Assistant should always communicate with each other to ensure that their office is filled at each associational annual or Executive Committee meeting.

SECTION 7. The Program Leaders and the Institutional Agency Representatives shall perform all duties customary to their titles and shall make a written report to the annual session of the association.

SECTION 8. The Director of Missions shall work closely with the associational committees, officers, and churches in such a way as to facilitate the meeting of the objectives of the association as set forth in Article II.

The director shall serve as ex officio member of all committees of the association. The director shall communicate with the state and Southern Convention such information as shall be mutually helpful and needful.

The duties of the Director of Missions shall be set forth in Article XIV.

SECTION 9. Trustees have no authority except by direction of the association, and are not personally bound by their signatures but, are to be the legal signees for the association.

Trustees represent the association in legal matters.

Trustees act on behalf of the association in acquisition and disposal of associational property.

They sign all deeds of conveyance, execute all notes, bonds or mortgages, intervene in all suits, by authority of the association.

All persons dealing with the trustees, as associational officers, may rely upon any written resolution duly adopted by the association or Executive Committee, directing and authorizing the trustees to act in its behalf and certified by the association moderator and clerk.

ARTICLE VIII - RULES OF ORDER

The business of the association shall be conducted according to *Robert's Parliamentary Practice* or in a manner not contrary thereto.

ARTICLE IX - QUORUM

The annual associational quorum shall be not less than 25 percent of the member churches represented.

ARTICLE X - THE EXECUTIVE COMMITTEE

SECTION 1. The Executive Committee shall be composed of the general officers and program leaders elected by the association and the pastor and one member from each church in the association. No pastor, by virtue of his being an associational officer or program leader shall be disqualified as a member of the Executive Committee, from representing the church or churches he may be serving in the association. Twelve of these members shall constitute a quorum.

***SECTION 2.** It shall be the duty of the Executive Committee to act for the association on matters arising when the association is not in session and to make a report of all work to the next session of the association. This body shall meet at a time and place designated by the moderator on Monday following the first Sunday of each quarter except for the July quarter which shall meet on the second Monday of the month of July. Special meetings of the Executive Committee may be called by the moderator with a one week notice to the churches.

SECTION 3. All vacancies occurring on committees or among elected officers shall be filled by the Executive Committee.

SECTION 4. In the event that a vacancy occurs with the trustees, the Executive Committee should fill such a vacancy for the remainder of the term.

ARTICLE XI - ASSOCIATIONAL STANDING COMMITTEES

SECTION 1. The association shall have such standing committees as may be deemed necessary to promote efficiently the work of the Master in our midst. The term of office for all committee members shall be for one year except where specifically stated otherwise.

SECTION 2. COMMITTEE ON COMMITTEES. It shall be the duty of this committee to nominate at the general meeting all standing committees as set forth under Article XI.

SECTION 3. The **NOMINATING COMMITTEE** shall be composed of seven members. To this group the directors of Sunday School, Church Training, Woman's Missionary Union, Brotherhood and Music Ministry will be added.

It shall be the duty of this committee to nominate the officers, program leaders and institutional agency representatives. These nominees shall be notified in writing not less than one month prior to presenting of their names at the annual session.

SECTION 4. The **ORDER OF BUSINESS COMMITTEE**, composed of three members shall plan the annual program of the association and present it to the Executive Committee at its July meeting.

SECTION 5. The **CREDENTIALS COMMITTEE** shall be composed of three pastors and two laymen. It shall examine applications of churches seeking admission into the association in keeping with Article IV, and make recommendations to the association.

It shall counsel with churches that are out of harmony or fellowship with the association.

SECTION 6. The **PLACE AND PREACHER COMMITTEE** shall be composed of three members. The duties of this committee shall be to recommend the place or places for the following annual meeting and to recommend the preacher and alternate to deliver the annual sermon for the following year.

SECTION 7. The **RESOLUTIONS COMMITTEE** shall be composed of three members appointed by the moderator at the **OCTOBER** Executive Committee meeting. It shall be the duty of the committee to present suitable resolutions at the annual associational meeting.

SECTION 8. The **MEMORIAL COMMITTEE** shall be composed of three members. It shall be the duty of this committee to bring a report to the annual meeting of those listed by the member churches as deceased since the last annual meeting and shall lead in a memorial service in their memory.

SECTION 9. The **FINANCE COMMITTEE** shall be composed of six members including the treasurer of the association. This committee shall: (a) present a budget to the association for the following year; (b) devise plans for raising the funds for the associational budget; (c) audit the finances and financial records of the association annually and anytime there is a change of treasurer or at the direction of the association or the Executive Committee; (d) report all audits to the annual association meeting.

SECTION 10. The **CONSTITUTION COMMITTEE** shall be composed of three members and shall perform all duties specified in Article XV.

SECTION 11. The **ORDINATION COMMITTEE** shall be composed of five designated pastors and all other pastors who desire to sit with the committee.

- a. The committee serves in an advisory capacity only and serves at the request of the church from which one of the members is seeking ordination.
- b. The committee should examine such candidates for the ministry as come before it as to their call and fitness for the gospel ministry and make such recommendations to the church as they feel led.
- c. The committee should assist in arranging the proper service of ordination when such assistance is requested.
- d. The Executive Committee should be informed regularly of the work of the committee.
- e. Each church desiring to ordain a candidate is urged to consult with the committee, and shall give two weeks notice in which the committee is to do its work.

SECTION 12. The **EVANGELISM COMMITTEE**. The duties of the committee shall be to direct and promote a perpetual program and spirit of evangelism in the association. It shall arrange and direct all associational wide evangelistic activities.

***SECTION 13.** The **ASSOCIATIONAL MISSIONS DEVELOPMENT COUNCIL** shall be composed of eight (8) members, nominated by the Associational Committee on Committees; and elected by the Association at the annual meeting. The committee shall be: Missions Development Director, Promotion Director, Survey Director, Associational WMU Mission Action Director, Associational Brotherhood Director, Sunday School Outreach Director, Church Training Director, and Associational Deacons President. The Missions Development Director, Promotion Director, and Survey Director shall be elected for a three-year term, with one member named each year. The other five positions shall be filled by the person who is elected to fill those five Associational Offices.

The duties of the AMDC are to lead the Associational Missions Development in the five mission performance tasks: (1) call churches to be on missions; (2) train, develop, and encourage church and associational workers; (3) provide resources and services to churches and leaders; (4) provide opportunities for working together in missions, ministry and growth; (5) establish and maintain appropriate communications and relationships with the community and the denomination.

SECTION 14. The **BUILDING AND GROUNDS COMMITTEE** shall be comprised of three members. The committee shall be responsible for and in charge of the upkeep and repairs of the associational building, grounds, and equipment.

ARTICLE XII - THE ASSOCIATIONAL COUNCIL

***The ASSOCIATIONAL COUNCIL** shall be composed of the Director of Missions, the Vice Moderator, the program leaders: Sunday School, Church Training, Woman's Missionary Union, the Brotherhood Director, the Chairmen of Deacons, the Chairman of the Missions Committee, the Chairman of Evangelism, the Chairman of the Finance Committee, the Vacation Bible School Director, the Youth Director, the Director of the Singles, the Director of the Senior Adults and the Music Director. The Director of Missions is to serve as Chairman and a secretary shall be elected from the group.

The purpose of the council is to coordinate the planning of the various programs of the association, to develop an associational calendar, and to give mutual support to the various organization and program units in carrying out their assignments.

The council shall meet quarterly.

ARTICLE XIII - THE ASSOCIATIONAL PASTORS' CONFERENCE

The Associational Pastors' Conference provides regular meetings for the Baptist ministers of the association. The purpose of the conference is for fellowship and mutual support, for doctrinal and professional discussion and for promotion of church, associational and other denominational programs. The conference is not an administrative or executive body.

ARTICLE XIV - DIRECTOR OF MISSIONS JOB DESCRIPTION

SECTION 1. FUNCTION OF THE DIRECTOR OF MISSIONS. He is to be the chief administrative officer of the association. He is to confirm extra employment in a manner agreed upon with the Executive Committee.

SECTION 2. RELATIONSHIP OF THE DIRECTOR OF MISSIONS.

1. He is employed by the Executive Committee of the association.
2. General supervision of the personnel and program of the association as they function through the association office.
3. Work primarily with (pastors), associational general officers, committees, and organizations.
4. Work closely with auxiliary organizations (such as W.M.U., Baptist Men, etc.).
5. Lead in maintaining relationships with state and S.B.C. agencies and promoting their programs.

SECTION 3. In the churches, extending the local ministries.

To visit churches by invitation of the pastor or other church leaders, in the pastorless churches to provide assistance in the church program and ministry, such as (1) Pulpit supply; (2) Study courses; (3) Missionary address; (4) Deacons' meetings; (5) Assembly programs; (6) Special day addresses; (7) Ordination services; (8) V.B.S. planning and promotion; (9) To interpret phases of associational work; (10) Budget planning; (11) Building planning; (12) Revival meetings; (13) Stewardship emphasis; (14) Study objectives and long range planning; (15) Studying and evaluating procedures, curriculum, constitution and bylaws, etc.; (16) Church-community surveys, etc.; (17) Promoting a world missions concept; and (18) Publishing of a regular news medium (such as a monthly newsletter); (19) Cooperate with the news media to promote Baptist work.

In the associational office:

- a. Personal correspondence, promotional mail, and telephoning pertinent to his work.
- b. Office conferences, answer to inquiries, etc.
- c. Assist associational officers, committees and heads of organizations to get out promotional mail pertinent to their work.

SECTION 4. Schedule of Benefits

1. His salary shall be
2. His fringe benefits shall include
3. His schedule shall include:
 - a. One day a week, chosen at his discretion, shall be reserved for rest that excluded normal associational activities.
 - b. A maximum of four weeks each year outside of the association for special work with local churches or with state and S.B.C. agencies.
 - c. An annual sick leave of 26 days maximum, with a maximum of 42 days to be accumulated. Sick leave may be advanced by the association for one year without Executive Committee action. Sick leave is to be recorded with the financial secretary of the association.
 - d. Two weeks annual vacation with pay.

- e. Holidays: New Year's Day; Easter Monday; July 4; Labor Day; Thanksgiving, Thursday and Friday; Christmas, December 25 and 26.
4. All honorarium from churches inside or outside the association and all honorarium from other religious work shall be his personal fair, and shall not be submitted to the association.
5. The Director of Missions is afforded the opportunity of an annual evaluation by the Moderator and Missions Committee.

ARTICLE XV - AMENDMENTS

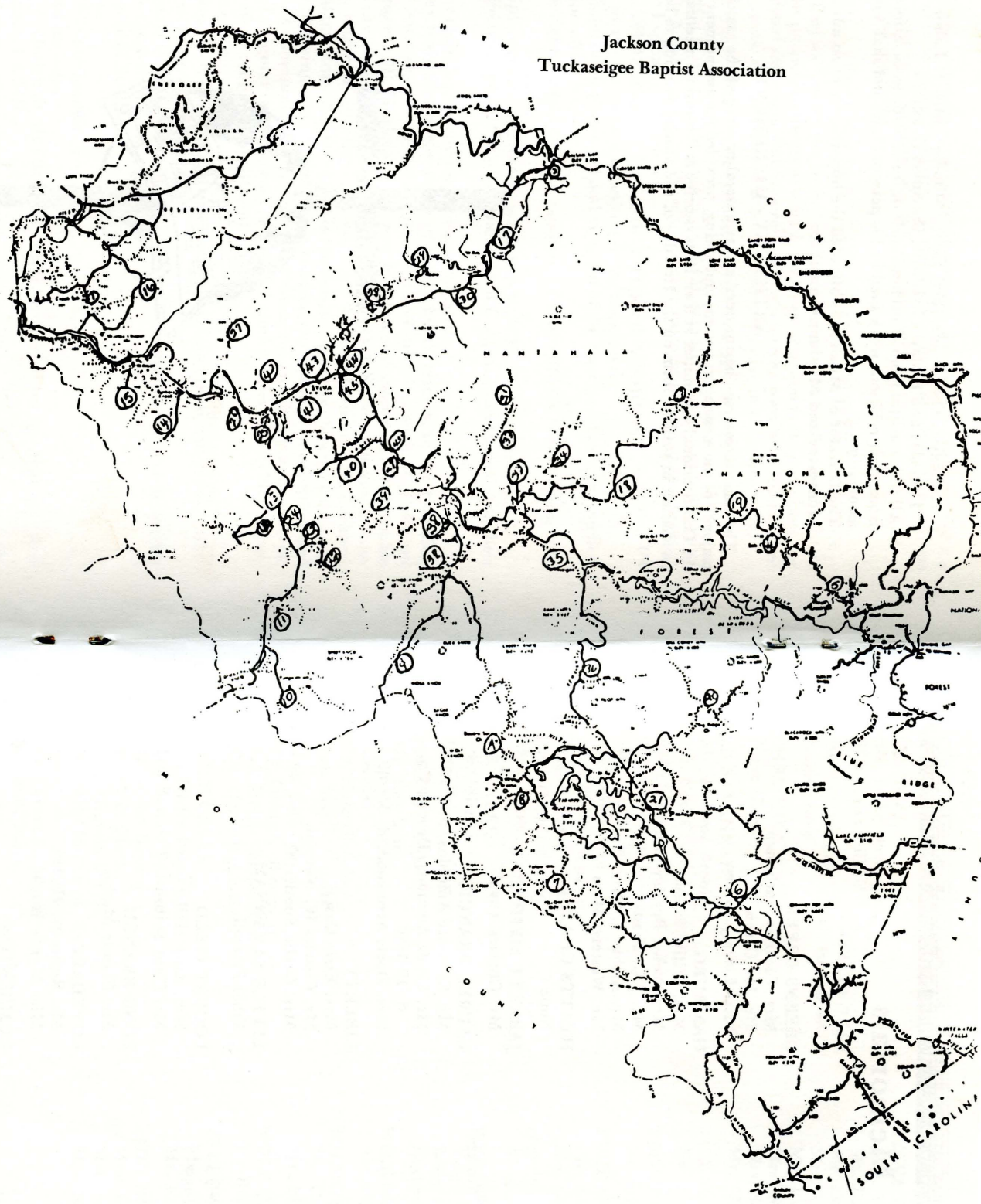
The constitution may be amended at any annual meeting of the association by a two-thirds majority of the messengers present and voting, provided the amendment has been presented to the Constitutional Committee at least 10 days prior to the annual meeting and presented to the association in printed form on the first day of the annual meeting to be voted on the second day.



Jackson County
Tuckasegee Baptist Association

-36-

1. Shoal Creek
2. Balsam
3. Balsam Grove
4. Sols Creek
5. Wolf Creek
6. Cashiers
7. Yellow Mt.
8. Pine Creek
9. Tilley Cr.
10. Zion Hill
11. New Savannah
12. Greens
13. Old Savannah
14. Rockdale
15. Wilmot
16. Hyatts Chapel
17. Mt. Pleasant
18. Johns Creek
19. Cullowhee Valley
20. Big Ridge
21. Hamburg
22. East Fork
23. Deitz Memorial
24. Calvary
25. Jarrett Memorial
26. Locust Field
27. Dicks Creek
28. Scotts Creek
29. Buff Creek
30. Ochre Hill
31. Black Mountain
32. Unity
33. Lumberton
34. Moses Creek
35. Tuckasegee
36. Trout Creek
37. Speedwell
38. Cullowhee
39. Little Savannah
40. Webster
41. Laurel Branch
42. Long Branch
43. Sylva, First
44. East Sylva
45. Wilkesdale
46. Lovedale
47. New Hope⁴
48. Fall Cliff
49. Liberty
50. Promise Land



-37-

Memorials

- BALSAM**
Mr. G.B. Coward
Mr. Charlie Derrick
- BALSAM GROVE**
None Listed
- BIG RIDGE**
No Report
- BLACK MOUNTAIN**
None
- BUFF CREEK**
Mrs. Iva Lee Henson
Mr. Ernest Robinson
- CALVARY**
None Listed
- CASHIERS**
Mr. Tom Madden, Deacon, Trustee
Mr. Lee Rogers
Mrs. Edna Smith
- CULLOWHEE**
Mr. Alvin Crawford
Mr. Glenn Hughes
Mr. Percy Parker
- CULLOWHEE VALLEY**
None
- DEITZ MEMORIAL**
Mrs. Nelli Deitz
- DICKS CREEK**
Mrs. Beulah Brown - 1906-1989
Hubert Brown - 1917-1989
Frank Bryson - 1916-1988
Homer Cabe - 1960-1983
- EAST FORK**
None Listed
- EAST SYLVA**
Mrs. Tom Arrowood
Rev. David Powers, Preacher
Mr. Love Dillard, Deacon
Mrs. Mary Dillard
Mr. J.E. Guffie
Mr. William Hepner
Mr. Herman Morgan
Mr. Sam Sanford
Mrs. Evelyn West
- FALL CLIFF**
No Report
- GREENS CREEK**
Mrs. Clearsie Buchanan
Mr. Joe Green
Mrs. Litha J. Green
- HAMBURG**
Mrs. Willie Bryson
Mrs. Nellie Bryson Eldreth
Mr. J.C. Franks
Mr. Arthur Gibbs
Mr. Western Moss
- HYATTS CHAPEL**
None
- JARRETT MEMORIAL**
Mr. Charles Turpin
- LAUREL BRANCH**
Mr. Clarence Ammons, d. 1/13/89
Mr. Clyde Ammons, Deacon Ch.,
d. 12/1/88
Mrs. Doris Arrowood, d. 5/6/89
- LIBERTY**
Mrs. Essie Casey
Mr. Charles W. Norman
Mrs. Otelia Sudderth
- LITTLE SAVANNAH**
Ethel Frizzell
- LOCUST FIELD**
Mrs. Amy Hall
Mr. Clint Sutton
- LONG BRANCH**
Mr. Claude Mathis
- LOVEDALE**
Mr. Rufus M. Hall
Miss Myrtle Hoyle
- LUMBERTON**
None Listed
- MOSES CREEK**
None Listed
- MT. PLEASANT**
None

- NEW HOPE**
Mr. Mike Davenport
Mrs. Dora Dillard
- NEW SAVANNAH**
None Listed
- OCHRE HILL**
None Listed
- OLD SAVANNAH**
Mr. Monroe Brooks
Mr. Carl Cagle, Deacon
Mrs. Charity Gates
Mr. Raymond Hall
Mrs. Leona Hall
Mr. Willie Hall
Mrs. Nellie Hensley
Mrs. Barbara Starnes
Miss Debbie Sutton
Mrs. Roberta Woodard
- PINE CREEK**
Mr. Michael Coggins
Mrs. Pricilla Norris
- PROMISE LAND**
Mr. Roy Tritt
- ROCKDALE**
Mr. Eulas Brooks
Mrs. Myrtle Carnes
- SHOAL CREEK**
Mr. James E. Battle, Jr.
Mrs. Hettie Cooper Crisp
Mrs. Hazel Webb Gass
- SCOTTS CREEK**
Mr. Hayes Beasley
Mrs. Bonnie Braswell
Mr. Alden Bryson
Mr. Cash Clark
Mrs. Virginia Erwin
Mr. Delos Monteith, Sr.
Mrs. Tinnie M. Moore
Ms. Teresa L. Myers
Mr. B.E. Parris
- SOLS CREEK**
Mrs. Zula Alexander
Mrs. Nannie Broom
- SPEEDWELL**
None
- SYLVA FIRST**
Mrs. Violet Bumgarner
Mr. Eddie Cagle
Mr. Dave Callahan
Mrs. Voncille Collins
Mr. Kent Coward, Deacon
Mrs. Nancy Lewis
Mrs. Selma Middleton
Mr. Charlie Stephens
- TILLEY CREEK**
None
- TROUT CREEK**
No Report
- TUCKASEGEE**
Mr. Alvin Ashe, Deacon
Ms. Essie Davis
- UNITY**
None Listed
- WEBSTER**
Virgil Cook, d. 12/88
Betty Lou Howell, d. 4/89
Rachael Nicholson, d. 12/88
- WILKESDALE**
Mr. Harley Stewart
- WILMOT**
Mr. Curtis Nations
Mr. Eli Settlemyre
- WOLF CREEK**
No Report
- YELLOW MOUNTAIN**
Mrs. Retha Coggins, d. 7/89
Mr. Frank Stewart, d. 6/89
- ZION HILL**
Mrs. Luetta Franks
Mrs. Sue Johnson
Mrs. Maggie Wilson



Messengers

(This list is taken from the registration list. Many churches did not turn in their messengers on the Church Letter, therefore this list will not necessarily be compatible with the church elected messengers.)

BALSAM: Willard Beck, Stella Bryson, Anita Freeman, Bill Freeman
BALSAM GROVE: None Registered
BIG RIDGE: Joan Ashe, Keith Ashe
BLACK MOUNTAIN: Glenn Blanton
BUFF CREEK: Alex Pasetti, Mary Pasetti, Eloise Shuler, Lincoln Shuler
CALVARY: Betty Greene
CASHIERS: Lewis Smith, Sherry Smith, Harry Waller, Jane Waller, Jerry Hagan
CULLOWHEE: Joe Yelton, Jack Hinson, Annie Hoyle, Gladys Parker, Moquetta Crawford, Irene Hooper, Bob Crawford, Mary Helderman
DEITZ MEMORIAL: Bill Buchanan, Margie Buchanan, Robert Blanton, Bessie Deitz
DICKS CREEK: Gail Clawson, Ruby Dills, Hazen Pangle, Bruce Stiles, Kathy Stiles
EAST FORK: Roy Buchanan, Thelma Buchanan, Norma DeStefanno, Anthony DeStefanno
EAST SYLVA: Johnny Buchanan, Lois Ensley, Fred Medford, Alvin Hoyle, Amy Hoyle, Tim Thomas, Harold McMahan, Dennis Ensley
FALL CLIFF: None Registered
GREENS CREEK: Allen Garner, Joann Garner, Eula Frizzell, Charles Ginn
HAMBURG: Tom Fierra, Denna Fierra, Bob Christopher, Ruth Christopher, Arnold Nicholson
HYATTS CHAPEL: Charlotte Allison, Lucille Gunter, Frankie Blanton, Russ Bradley, Hardin Nicholson, Charles Ward, Jane Ward
JARRETT MEMORIAL: Ray Buchanan, Sudrey Buchanan, Charles Sisti, Joe Wilkey
JOHNS CREEK: None Registered
LAUREL BRANCH: None Registered
LIBERTY: None Registered
LITTLE SAVANNAH: Tom Crowder, Freddie Frizzell, Mary Ann Wheatley, Phyllis Wilson, Vaughn Shepherd, Frankie Shoup
LOCUST FIELD: Virginia Pangle
LONG BRANCH: Billy Stiles
LOVEDALE: Gayle Conley, J.D. Grant, Judy Grant, Mildred Kelley, Rick Henson
LUMBERTON: Mike Farmer, Kathy Farmer, Oletia Zachary
MOSES CREEK: None Registered
MT. PLEASANT: Tom McClure, Vance Styles, Ike Fisher, Dianna McClure, Earl Holden
NEW HOPE: Haven Ensley, Lee Ensley, Mildred Harris, Mike Moore, Carlton Phillips, Doris Phillips, Frank Wilson, Willard Davenport, Donald Shuler
NEW SAVANNAH: Barry Almand
OCHRE HILL: Deborah Lamb, Tommy Lamb, Kate Israel, Jean Keener, Lewis Keener, John Reid, Jimmie Sutton
OLD SAVANNAH: Doris Barker, Mark Barker, Larry Nations, Virginia Nations, Enley Cope, Artis Frady, Vera Cope
PINE CREEK: None Registered
PROMISE LAND: None Registered
ROCKDALE: Lindon Allen, Charles Brown, Jennie Miller, Kenneth Miller
SCOTTS CREEK: Howard Buchanan, Loyd Fish, Linda Fish, Charles Moses, Nancy Smith, Johnny Watson
SHOAL CREEK: Harold Anderson, Ronald Henderson
SOLS CREEK: None Registered
SPEEDWELL: Jesse Flake, Ida Mae Wilkes

SYLVA FIRST: Roger Dillard, Sr., Hattie Hilda Allison, Harry Griffen, Sara Griffen, Clyde Vance, Barbara Vance, Ed Beddingfield, Shirley Kool, Roger Turk, Mary Jane Dillard

TILLEY CREEK: None Registered

TROUT CREEK: None Registered

UNITY: None Registered

WEBSTER: Jim Cowan, Tom Collins, Kay Frazier, Kay Collins

WILKESDALE: Troy Daves, Frankie Dean, Keith Dean

WILMOT: None Registered

WOLF CREEK: None Registered

YELLOW MOUNTAIN: Dennis Burrell

ZION HILL: Wesley Hooper, Gladys Hooper, Cecil Woodard, Alonzo Woodard

Associational Directory

1989-1990

Associational Council

Director of Missions John Reid, P.O. Box 266, Sylva 28779; 586-6011
 Moderator Clyde Vance, Rt. 1 Box 347, Sylva 28779; 586-6819
 Brotherhood Kenneth Pressley, P.O. Box 1437, Cullowhee 28723; 293-5001
 Church Training Norman Parris, Rt. 3 Box 263, Sylva 28779; 586-2611
 Deacon Chairman Haven Ensley, Rt. 3 Box 209, Sylva 28779; 586-4564
 Evangelism Chairman Joe Yelton, P.O. Box 37, Cullowhee 28723; 293-9024
 Finance Chairman Lloyd Fish, 1 Scotts Cr. Pl., Sylva 28779; 586-2631
 Mission Chairman Tommy Lamb, Rt. 1 Box 905, Sylva 28779; 586-6993
 Music Chairman Harry Vance, Rt. 3 Box 299, Sylva 28779; 586-4898
 Singles Director Keith Campbell, 14 E. Main, Sylva 28779; 586-2508
 Senior Adult Director
 Sunday School Director Barry Almand, P.O. Box 2091, Sylva 28779; 586-3024
 Vacation Bible School Director Tom Crowder, Rt. 66 Box 114, Cullowhee 28723; 586-3222
 W.M.U. Shirley Kool, 21 Parris Cemetery Rd., Sylva 28779; 586-5066

Baptist Men Directors

Buff Creek Lee Parris, Rt. 1, Sylva 28779
 Cashiers Larry Moss, Rt. 2 Box 242, Cashiers 28717
 Cullowhee Joe Yelton, P.O. Box 37, Cullowhee 28723
 Cullowhee Valley Jim Pressley, P.O. Box 96, Cullowhee 28723
 Liberty Lydon Casey, 11 Hospital Rd., Sylva 28779
 Ochre Hill Brian Stephens, Rt. 1 Box 967, Sylva 28779
 Old Savannah James Mason, Box 181, Webster 28788
 Rockdale Doug Denny, Rt. 2, Whittier 28789
 Scotts Creek Johnny Watson, P.O. Box 22, Sylva 28779
 Sylva First Roger Turk, Rt. 66 Box 114 T, Cullowhee 28723

Discipleship Training

Balsam Dean Coward, P.O. Box 896, Sylva 28779; 586-9091
 Calvary Marshall Bradley, Rt. 2 Box 144, Sylva 28779; 586-4949
 Cashiers Richard McCall, Rt. 3, Sylva 28779; 586-8174
 Cullowhee Valley Shirley Pressley, P.O. Box 1437, Cullowhee 28723; 293-5001
 East Fork Dusty Destafano, Rt. 2, Sylva 28779; 586-3631
 Greens Creek Jane Howell, Rt. 2, Sylva 28779; 586-9706
 Hamburg Marvin Jennings, Glenville 28736
 Hyatts Chapel Carlous Gunter, Rt. 1, Whittier 28789
 Jarrett Memorial Tony Sutton, P.O. Box 204, Dillsboro 28725; 586-4703
 Little Savannah Janie Farmer, Rt. 3 Box 230, Sylva 28779; 586-2011
 Long Branch Bill Stepp, P.O. Box 235, Dillsboro 28725; 586-9880
 Lovedale Hilda Hoyle, P.O. Box 851, Sylva 28779; 586-5331
 Ochre Hill Nelda Reid, Rt. 1 Box 903, Sylva 28779; 586-9538
 Old Savannah J.D. Franks, Rt. 2, Sylva 28779
 Scotts Creek Dan Ward, Rt. 1 Box 384, Sylva 28779; 586-6216
 Speedwell Roger Stewman, 4 Old US 441, Sylva 28779; 586-5325
 Webster Jim Cowan, Rt. 3, Sylva 28779; 586-5696
 Wilkesdale Christine Painter, 20 Sunrise Park, Sylva 28779

Clerks

Balsam Stella Bryson, P.O. Box 194, Balsam 28707; 456-6859
 Balsam Grove None Listed
 Big Ridge None Listed
 Black Mountain Betty Littrell, Rt. 67 Box 45A, Cullowhee 28723; 293-9884
 Buff Creek Gail Melton, 32 Jacob Henry Rd., Sylva 28779; 586-2252
 Calvary Linda James, Rt. 2 Box 69, Sylva 28779; 586-4673
 Cashiers Donnie Madden, Rt. 70 Box 1, Cashiers 28717; 743-2498
 Cullowhee Dianne Yount, P.O. Box 1051, Cullowhee 28723; 293-5898
 Cullowhee Valley Elaine Haskett, 726 Pressley Cr. Rd., Cullowhee 28723; 293-9436
 Deitz Memorial Victoria Buchanan, Rt. 2 Box 163, Sylva 28779; 586-4613
 Dicks Creek Ina Turpin, Rt. 2 Box 163, Whittier 28789; 586-2273
 East Fork Mrs. Coy Deitz, Rt. 2 Box 183, Sylva 28779; 586-4616
 East Sylva Maxine Bivens, P.O. Box 194, Sylva 28779; 586-6643
 Fall Cliff No Report
 Greens Creek Barbara Green, Rt. 2, Sylva 28779; 586-4688
 Hamburg Cheryl Queen, Rt. 66 Box 247A, Cullowhee 28723; 743-3710
 Hyatts Chapel Margaret Gunter, Rt. 1, Whittier 28789
 Jarrett Memorial Margie Messer, Box 172, Dillsboro 28725; 586-2426
 Johns Creek Linda Sue Lovedahl, Rt. 67 Box 120, Cullowhee 28723; 293-5700
 Laurel Branch Jane Massingale, Rt. 1 Box 517, Sylva 28779; 586-8510
 Liberty Dorothy Love, P.O. Box 114, Sylva 28779; 586-2970
 Little Savannah Darlene Taylor, P.O. Box 1402, Cullowhee 28723; 586-2727
 Locust Field Jessie Shields, 33 Cagle Br. Rd., Sylva 28779; 586-9596
 Long Branch Clara Wilkey, 35 Monteith Cove Ext., Sylva 28779; 586-5177
 Lovedale Mrs. Thelma Painter, 22 Jones St., Sylva 28779; 586-4225
 Lumberton Emma Lou Shook, Rt. 67 Box 96, Cullowhee 28723; 293-3315
 Moses Creek Arthur Stephens, Rt. 3 Box 250, Sylva 28779; 586-6479
 Mt. Pleasant Pearl Henson, Rt. 1 Box 581, Sylva 28779; 586-2786
 New Hope Doris C. Phillips, Rt. 3 Box 465, Sylva 28779; 586-8530

New Savannah Ethel Collins, Rt. 2 Box 310, Sylva 28779; 586-2735
 Ochre Hill Theresa Sutton, Rt. 1 Box 873, Sylva 28779; 586-4651
 Old Savannah Doris Barker, 164 Sutton Br. Rd., Sylva 28779; 586-9656
 Pine Creek Barbara Henderson, Rt. 66 Box 155, Cullowhee 28723; 743-2345
 Promise Land Ann Bryson, Rt. 68 Box 158, Cullowhee 28723; 293-9447
 Rockdale Jennie S. Miller, Rt. 2 Box 122A, Whittier 28789; 586-6392
 Scotts Creek Lavonda Cross, Rt. 1 Box 871, Sylva 28779; 586-8243
 Shoal Creek Louise Edwards, Rt. 1 Box 248, Whittier 28789; 497-9504
 Speedwell Ida Mae Wilkes, 726 Pressley Cr. Rd., Cullowhee 28723; 293-6327
 Sols Creek Geraldine Brown, Rt. 68, Tuckasegee 28783
 Sylva First Cheryl Aldridge, 151 Jackson St., Sylva 28779; 586-6416
 Tilley Creek Geralene Ashe, 940 Tilley Cr. Rd., Cullowhee 28723
 Trout Creek No Report
 Tuckasegee Sharon Painter, P.O. Box 118, Tuckasegee 28783
 Unity Pam Bryson, Rt. 67 Box 81E, Cullowhee 28723; 293-3243
 Webster Karen B. Frazier, P.O. Box 26, Webster 28788; 586-6043
 Wilkesdale Iva Lee Daves, 215 Sylvan Hgts., Sylva 28779; 586-6525
 Wilmot Margaret Nations, Rt. 2, Whittier 28789
 Wolf Creek No Report
 Yellow Mountain Alice Woods, Rt. 2 Box 248, Norton Rd., Cashiers 28717; 743-3322
 Zion Hill Mrs. Cecile Woodard, Rt. 2 Box 257, Sylva 28779; 586-6227
 Associational Clerk Annie K. Hoyle; 293-5354

Deacon Chairmen

Balsam Bill Freeman, P.O. Box 31, Balsam 28707; 456-5877
 Balsam Grove Earl Hooper, Beta Cir., Sylva 28779; 586-2430
 Big Ridge No Report
 Black Mountain Lonnie Dills, Rt. 67 Box 47, Cullowhee 28723; 293-9726
 Buff Creek Lincoln Shuler, Rt. 1 Box 528, Sylva 28779; 586-6080
 Calvary Allen Bradley, Rt. 2 Box 144, Sylva 28779; 586-4949
 Cashiers Richard McCall, Rt. 3, Sylva 28779; 586-8174
 Cullowhee Stedman Mitchell, P.O. Box 135, Cullowhee 28723; 293-9613
 Cullowhee Valley Ronald Pressley, 742 Pressley Cr. Rd., Cullowhee 28723; 293-5492
 Deitz Memorial Grover Deitz, Rt. 2 Box 162, Sylva 28779; 586-4612
 Dicks Creek Willis Brown, 19 Josephine St., Sylva 28779; 586-6131
 East Fork Coy Deitz, Rt. 2 Box 183, Sylva 28779; 586-4616
 East Sylva Tommy Fisher, P.O. Box 857, Sylva 28779; 586-2888
 Fall Cliff No Report
 Greens Creek Charles Howell, Rt. 2, Sylva 28779; 586-9706
 Hamburg None Listed
 Hyatts Chapel Troy Gunter, Rt. 1, Whittier 28789; 497-3914
 Jarrett Memorial Tom Beasley, 28 Monteith Cove Ext., Sylva 28779; 586-9371
 Johns Creek Larry Loved, Rt. 67 Box 120, Cullowhee 28723; 293-5700
 Laurel Branch Mack Farmer, Sylva 28779; 586-8377
 Liberty Lyndon Casey, 11 Hospital Rd., Sylva 28779; 586-5210
 Little Savannah Dewey Crane, Rt. 3 Box 211, Sylva 28779; 586-8279
 Locust Field Buddy Brooks, Box 1892, Sylva 28779; 586-2968
 Long Branch Edward Elders, Rt. 2 Box 157, Whittier 28789; 586-2973
 Lovedale Steve Allen, P.O. Box 1001, Sylva 28779; 586-5444
 Lumberton Ray Houston, Rt. 67 Box 96, Cullowhee 28723; 293-5157
 Moses Creek Clarence Stephens, 347 E. Main St., Sylva 28779; 586-4344

Dicks CreekNone Listed
 East ForkCoy Deitz, Rt. 2 Box 183, Sylva 28779; 586-4616
 East SylvaVernon Jamison, P.O. Box 1, Sylva 28779; 586-2577
 Fall CliffNo Report
 Greens CreekAileen Green, Rt. 2, Sylva 28779; 586-4677
 HamburgKathleen Ashley, Glenville 28736; 743-2990
 Hyatts ChapelKent Little, Rt. 1, Whittier 28789
 Jarrett MemorialMike Deitz, P.O. Box 902, Sylva 28779; 586-8395
 Johns CreekNone Listed
 Laurel BranchNone Listed
 LibertyMargaret Miller, P.O. Box 382, Sylva 28779; 586-2044
 Little SavannahJames E. Wheatley, Rt. 3 Box 246, Sylva 28779; 586-4342
 Locust FieldWayne Brooks, 74 Macktown Rd., Sylva 28779; 586-9870
 Long BranchCurtis Allison, Rt. 3 Box 149, Waynesville 29786; 586-4260
 LovedaleBob Parker, 1 E. Main St., Sylva 28779; 586-2774
 LumbertonFred Houston, Rt. 67 Box 96A, Cullowhee 28723; 293-5918
 Moses CreekArthur Stephens, Rt. 3 Box 250, Sylva 28779; 586-6479
 Mt. PleasantJack Hoyle, Rt. 1, Sylva 28779; 586-4446
 New HopeMarvin Shuler, Rt. 3 Box 171, Sylva 28779; 586-6164
 New SavannahCatherine Manier, P.O. Box 317, Whittier 28789; 497-5954
 Ochre HillPam Hyatt, Rt. 1 Box 976A, Sylva 28779; 586-8813
 Old SavannahNone Listed
 Pine CreekNone Listed
 Promise LandAnn Bryson, Rt. 68 Box 155, Cullowhee 28723; 293-9447
 RockdaleCindy Brooks, Rt. 2 Box 139A, Whittier 28789; 586-9273
 Scotts CreekMike Nichols, P.O. Box 506, Sylva 28779; 586-4802
 Shoal CreekMrs. Esther Cole, Rt. 1, Whittier 28789; 497-5663
 SpeedwellCling Pressley, 692 Pressley Cr. Rd., Cullowhee 28723; 293-9829
 Sols CreekNone Listed
 Sylva FirstRobert Holquist, P.O. Box 1006, Cullowhee 28723; 293-3275
 Tilley CreekHartwell Patterson, 940 Tilley Cr. Rd., Cullowhee 28723
 Trout CreekNo Report
 TuckasegeeAnne Martin, P.O. Box 1779, Cullowhee 28723; 293-3311
 UnityNone Listed
 WebsterJoe Brooks, Rt. 3 Box 311, Sylva 28779; 586-2926
 WilkesdaleJim Barnes, 5 Henson Rd., Sylva 28779; 586-4487
 WilmotEmory Brooks, Sylva 28779
 Wolf CreekNo Report
 Yellow MountainJohn Blackburn, Rt. 66, Cullowhee 28723
 Zion HillKenneth Bishop, Rt. 2, Sylva 28779; 586-9072
 Associational DirectorHarry Vance; 586-4898

Pastors

BalsamFrank Reed, 401 Mauney Cove Rd., Waynesville 28786; 452-5325
 Balsam GroveClifford Parker, 47 Scotts Creek Rd., Sylva 28779; 586-3080
 Big RidgeKeith Ashe, Rt. 3 Box 430, Sylva 28779; 586-4361
 Black MountainGlenn Blanton, Rt. 1, Sylva 28779; 586-2428
 Buff CreekAlex Pasetti, P.O. Box 331, Whittier 28789; 497-2406
 CalvaryBill Greene, Rt. 2 Box 77, Sylva 28779; 586-9759
 CashiersLewis Smith, P.O. Box 336, Cashiers 28717; 743-3182
 CullowheeJoe Yelton, P.O. Box 37, Cullowhee 28723; 293-9024 (C), 293-9231 (H)
 Cullowhee ValleyKenneth Pressley, P.O. Box 1437, Cullowhee 28723; 293-5001
 Deitz MemorialRobert Blanton, Rt. 1, Sylva 28779; 586-2456 (W), 586-5688 (H)
 Dicks CreekHazen Pangle, P.O. Box 99, Dillsboro 28725; 586-4896

East ForkBrian Bishop, Rt. 3, Sylva 28779; 586-3935
 East SylvaCharles Dean, P.O. Box 526, Sylva 28779; 586-2853 (C), 586-5159 (H)
 Fall CliffTommy Holden, P.O. Box 1782, Cashiers 28717
 Greens CreekCharles Ginn, 124 Old Dillsboro Rd., Sylva 28779; 586-2865
 HamburgBob Christopher, P.O. Box 217, Glenville 28736; 743-2123
 Hyatts ChapelHardin Nicholson, Rt. 3, Sylva 28779; 586-5082
 Jarrett MemorialCharles Sisti, P.O. Box 4, Dillsboro 28725; 586-4869
 Johns CreekEugene Crawford, P.O. Box 274, Tuckasegee 28783; 293-3919
 Laurel BranchMike Queen, Sylva 28779
 LibertyJ.E. Smith, 104 Springdale Dr., Springdale 28760; 987-7604
 Little SavannahRoy Burnette, 75 Rufus Robinson Rd., Sylva 28779; 586-4091 (W), 586-6819 (H)
 Locust FieldCharles Carnes, Gen. Del., Dillsboro 28725; 586-6492
 Long BranchBilly Stiles, Rt. 1 Box 149, Waynesville 28786; 456-9394
 LovedaleJ.D. Grant, Rt. 1, Sylva 28779; 586-4731
 LumbertonMike Farmer, 71 Fisher Cr., Sylva 28779; 586-6530
 Moses CreekDillard Moore, 135 Monteith Br. Rd., Sylva 28779; 586-2294
 Mt. PleasantEarl Holden, Rt. 1 Box 152, Sylva 28779; 586-5262
 New HopeMike Moore, Rt. 1, Whittier 28789; 497-7832 (W), 497-9860 (H)
 New SavannahBarry Almand, P.O. Box 2091, Sylva 28779; 586-3024 (H), 586-9764 (W)
 Ochre HillTommy Lamb, Rt. 1 Box 905, Sylva 28779; 586-6993
 Old SavannahLarry Nations, Rt. 2 Box 104, Whittier 28789; 586-4073 (W), 586-6428 (H)
 Pine CreekEd Bryson, P.O. Box 275, Cashiers 28717; 743-5354
 Promise LandCarl Smith, P.O. Box 572, Sylva 28779; 586-3310
 RockdaleCharles Brown, P.O. Box 83, Balsam 28707; 456-9072
 Scotts CreekLloyd Fish, 1 Scotts Cr. Pl., Sylva 28779; 586-2631 (C), 586-8855 (H)
 Shoal CreekHarold Anderson, P.O. Box 386, Sylva 28779; 586-4954
 SpeedwellRoger Stewman, 4 Old US 441, Sylva 28779; 586-5325
 Sols CreekDill Mathis, Rt. 1 N. Fork Rd., Sylva 28779; 586-4516
 Sylva FirstEd Beddingfield, P.O. Drawer 1024, Sylva 28779; 586-2095 (C)
 Tilley CreekCarl Adams, Rt. 2 Box 472H, Sylva 28779; 586-5741
 Trout CreekJohnny Ray Davis, Rt. 2, Whittier 28789; 586-6310
 TuckasegeeNone Listed
 UnityPerry Cole, 497-4805
 WebsterRay McCall, P.O. Box 34, Webster 28788; 586-8771
 WilkesdaleDavid Mull, P.O. Box 826, Sylva 28779; 586-9471
 WilmotFrank Brooks, 68 Macktown Rd., Sylva 28779; 586-3299
 Wolf CreekBradley Chappell, P.O. Box 113, Rosman 28772; 884-6635
 Yellow MountainDennis Burrell, P.O. Box 1873, Sylva 28779; 586-6235
 Zion HillWesley Hooper, 19 Mica City Rd., Franklin 28734; 524-7408

Secretaries

BalsamJanet Mills, 154 Dolan Rd., Waynesville 28786; 452-2017
 Balsam GroveJanet Kilby, P.O. Box 1381, Cullowhee 28723; 293-9033
 Big RidgeNo Report
 Black MountainEvelyn Broome, Rt. 67 Box 57, Cullowhee 28723; 293-2713
 Buff CreekBetty Campbell, Rt. 1, Sylva 28779; 586-8641
 CalvaryChris Bradley, P.O. Box 357, Dillsboro 28725; 586-6553
 CashiersMartha Wentz, Cashiers 28717; 743-2549
 CullowheeEtheree Chancellor, P.O. Box 37, Cullowhee 28723; 293-9024
 Cullowhee ValleyBeth Pressley, P.O. Box 1437, Cullowhee 28723; 293-5001

Deitz Memorial Ronnie Buchanan, Rt. 2 Box 163A, Sylva 28779; 586-4880
 Dicks Creek Ina Turpin, Rt. 2 Box 16, Whittier 28789; 586-2273
 East Fork None Listed
 East Sylva Doris Shepard, 14 Hillcrest St., Sylva 28779; 586-4534
 Fall Cliff No Report
 Greens Creek Joann Garner, Rt. 2, Sylva 28779; 586-4698
 Hamburg None Listed
 Hyatts Chapel Margaret Gunter, Rt. 1, Whittier 28789; 497-9742
 Jarrett Memorial June Sisti, P.O. Box 40, Dillsboro 28725; 586-4869
 Johns Creek None Listed
 Laurel Branch Michelle Farmer, Sylva 28779; 586-5029
 Liberty None Listed
 Little Savannah Carolyn Lewis, Rt. 3 Box 243, Sylva 28779; 586-5261
 Locust Field Mary Sue Coggins, 28 Dillardtown Rd., Sylva 28779; 586-4758
 Long Branch Jean Ensley, 37 Skyland Dr., Sylva 28779; 586-4553
 Lovedale Mary Sue Coggins, 28 Dillardtown Rd., Sylva 28779; 586-4758
 Lumberton Fannie Mae Hooper, Rt. 67 Box 97, Cullowhee 28723; 293-9874
 Moses Creek None Listed
 Mt. Pleasant Robert Henry, Rt. 1, Sylva 28779; 586-4875
 New Hope None Listed
 New Savannah Belinda Foxx, Rt. 2 Box 247C, Sylva 28779; 586-5608
 Ochre Hill Mary Parks, Rt. 1 Box 936, Sylva 28779; 586-2673
 Old Savannah Jeannie Phillips, Rt. 67 Box 87C, Cullowhee 28723
 Pine Creek Barbara Henderson, Rt. 66 Box 155, Cullowhee 28723
 Promise Land Christine Barnes, Rt. 63 Box 148, Tuckasegee 28783
 Rockdale Jennie S. Miller, Rt. 2 Box 122A, Whittier 28789; 586-6392
 Scotts Creek Sharon Sellers, 19 Sellers Rd., Sylva 28779; 586-2544
 Shoal Creek Valorie Ferguson, Rt. 1, Whittier 28789; 497-7969
 Speedwell Shirley Pressley, 692 Pressley Rd., Cullowhee 28723; 293-5002
 Sols Creek Ernest Bryson, Rt. 68, Tuckasegee 28783; 293-7058
 Sylva First Betty J. Blanton, 65 Chipper Curve Rd., Sylva 28779; 586-6041
 Tilley Creek Geraldine Ashe, 94 Tilley Cr. Rd., Cullowhee 28723
 Trout Creek No Report
 Tuckasegee Frank Hooper, Rt. 68 Box 60, Tuckasegee 28783; 293-5617
 Unity Marian Aldridge, Rt. 67 Box 163, Cullowhee 28723; 293-5963
 Webster None Listed
 Wilkesdale Iva Lee Daves, 21 Sylvan Hgts., Sylva 28779
 Wilmot Carol Mae Cook, Rt. 2, Whittier 28789
 Wolf Creek No Report
 Yellow Mountain Helen Holden, Rt. 66, Cullowhee 28723; 743-3619
 Zion Hill Shannon Buchanan, Rt. 2, Sylva 28779; 586-4846

Stewardship Chairmen

The churches listed below are the only churches reporting Stewardship Chairmen

Cullowhee Jeff Davis, P.O. Box 2318, Cullowhee 28723; 293-5238
 Dicks Creek Ina Turpin, Rt. 2 Box 163, Whittier 28789; 586-2273
 Jarrett Memorial Andrew Buchanan, P.O. Box 215, Dillsboro 28725
 Ochre Hill Lewis Keener, Rt. 1 Box 900, Sylva 28779; 586-4276
 Sylva First Leo James, P.O. Box 197, Whittier 28789; 497-6541
 Tuckasegee Anne Hollifield, P.O. Box 74, Tuckasegee 28783

Sunday School Directors

Balsam Ronald Coggins, Rt. 1 Box 777C, Sylva 28779; 586-3104
 Balsam Grove No Report
 Big Ridge No Report
 Black Mountain David Nicholson
 Buff Creek Charles McClure, Rt. 1 Box 447, Sylva 28779; 586-5313
 Calvary Grover Cabe, Rt. 2 Box 119, Sylva 28779; 586-5470
 Cashiers Benny Rice, Bull Pen Rd., Cashiers 28717; 743-2215
 Cullowhee Pelham Thomas, Rt. 67 Box 35B, Cullowhee 28723; 293-5132
 Irene Bishop, P.O. Box 2317, Cullowhee 28723; 293-5456
 Cullowhee Valley Roy Haskett, 726 Pressley Cr. Rd., Cullowhee 28723; 293-9436
 Deitz Memorial Keith Buchanan, Fisher Cr. Rd., Sylva 28779; 586-8212
 Dicks Creek Willis Brown, 19 Josephine St., Sylva 28779; 586-6131
 East Fork Alfred Melton, Rt. 2, Sylva 28779; 586-9076
 East Sylva Dennis Ensley, 170 Fisher Cr., Sylva 28779; 586-5068
 Fall Cliff No Report
 Greens Creek Allen Garner, Rt. 2, Sylva 28779; 586-4698
 Hamburg Ervin Booth, Glenville 28736
 Hyatts Chapel Cance Carnes, Rt. 1, Whittier 28789
 Jarrett Memorial Perry Sutton, P.O. Box 69, Dillsboro 28725; 586-4703
 Johns Creek Larry Lovedahl, Rt. 67 Box 120, Cullowhee 28723; 293-5700
 Laurel Branch Junior Hoyle, Sylva 28779
 Liberty Linda Mingus, P.O. Box 1932, Sylva 28779
 Little Savannah Tom Crowder, Rt. 66 Box 114, Cullowhee 28723; 293-3222
 Locust Field Wayne Brooks, 74 Macktown Rd., Sylva 28779; 586-9876
 Long Branch Roy Dalton, Rt. 2 Box 159, Whittier 28789; 586-6630
 Lovedale Dennis Proffitt, P.O. Box 838, Sylva 28779; 586-5812
 Lumberton Fred Houston, Rt. 67 Box 96D, Cullowhee 28723; 293-5418
 Moses Creek Earl Stephens, Rt. 67 Box 103, Cullowhee 28723; 293-9359
 Mt. Pleasant Tom McClure, Rt. 1, Sylva 28779; 586-3712
 New Hope Arnold Brooks, P.O. Box 836, Sylva 28779; 586-8386
 New Savannah Catherine Manier, P.O. Box 317, Whittier 28789; 497-5954
 Ochre Hill Billy Hyatt, Rt. 1 Box 976A, Sylva 28779; 586-9913
 Old Savannah James Mason, Box 181, Webster 28788; 586-6343
 Pine Creek Ray Crawford, Rt. 66 Box 156, Cullowhee 28723; 743-2564
 Promise Land Cornelius Massingale, P.O. Box 477, Cullowhee 28723; 293-5677
 Rockdale Lindon Allen, Rt. 2, Whittier 28789; 586-6883
 Scotts Creek Denver Monteith, Rt. 3 Box 431, Sylva 28779; 586-4241
 Shoal Creek Ronald Henderson, Rt. 1, Whittier 28789; 497-9887
 Speedwell Marvin Wilkes, 725 Pressley Cr. Rd., Cullowhee 28723; 293-5157
 Sols Creek None Listed
 Sylva First Ken Mostella, P.O. Box 1976, Cullowhee 28723; 586-3321
 Tilley Creek Bill Carpenter, Little Savah. Rd., Sylva 28779
 Trout Creek No Report
 Tuckasegee Stella Parker, P.O. Box 118, Tuckasegee 28783; 293-9637
 Unity Charles Hooper, 8 Ensley St., Sylva 28779; 586-5746
 Webster Ernest Penland, P.O. Box 96, Webster 28788; 586-2287
 Wilkesdale Keith Dean, 20 Sunrise Park Lot #1, Sylva 28779
 Wilmot George Maney, Sylva 28779
 Wolf Creek No Report
 Yellow Mountain J.B. Stiwinter, Rt. 66, Cullowhee 28723; 743-2580
 Zion Hill Raymond Wilson, Rt. 2, Sylva 28779; 586-6586
 Associational Director Barry Almand, 586-3024

Sunday School ASSISTeam

Director Barry Almand, P.O. Box 2091, Sylva 28779; 586-3024
 Adults Irene Hooper, P.O. Box 2317, Cullowhee 28723; 293-5456
 Youth Winston Hardman, P.O. Box 1419, Cullowhee 28723;
 293-9030 (W), 584-3210 (H)
 Children Maggie Almand, P.O. Box 2091, Sylva 28779; 586-3024
 Preschool Shiri Turk, Rt. 66 Box 114T, Cullowhee 28723; 293-5426

Woman's Missionary Union

Balsam Kathy Bryson, Rt. 1, Walker Rd., Waynesville 28786; 452-0519
 Balsam Grove None
 Big Ridge No Report
 Black Mountain None
 Buff Creek Eloise Shuler, Rt. 1 Box 528, Sylva 28779; 586-6030
 Calvary None
 Cashiers Mrs. Tommie Pennington, Cashiers 28717; 743-3251
 Cullowhee Annie Hoyle, P.O. Box 446, Cullowhee 28723; 293-5354
 Cullowhee Valley Bessie Blanchard, 610 Pressley Cr. Rd., Cullowhee 28723;
 293-3344
 Deitz Memorial None
 Dicks Creek Linda Brown, 19 Josephine St., Sylva 28779; 586-6131
 East Fork None
 East Sylva None
 Fall Cliff No Report
 Greens Creek Joyce Greene, Rt. 2, Sylva 28779; 586-4695
 Hamburg Viola Bryson, Glenville 28736
 Hyatts Chapel None
 Jarrett Memorial June Sisti, P.O. Box 40, Dillsboro 28725; 586-4869
 Johns Creek None
 Laurel Branch None
 Liberty Wilma Simpson, P.O. Box 313, Sylva 28779; 586-4541
 Little Savannah Doris Crowe, Rt. 3 Box 258D, Sylva 28779; 586-8481
 Locust Field Bonnie Green, P.O. Box 254, Dillsboro 28725; 586-9722
 Long Branch Georgia Ensley, Rufus Robinson Rd., Sylva 28779; 586-4595
 Lovedale Freda Queen, 348 E. Main St., Sylva 28779; 586-2871
 Lumberton None
 Moses Creek None
 Mt. Pleasant None
 New Hope Marcella Sellers, P.O. Box 223, Sylva 28779; 586-6474
 New Savannah None
 Ochre Hill Annie Belle Blanton, Rt. 1 Box 914, Sylva 28779; 586-2428
 Old Savannah Darlous Buchanan, Rt. 2 Box 121, Sylva 28779; 586-4983
 Pine Creek None
 Promise Land None
 Rockdale Janet Jones, Rt. 2, Whittier 28789; 586-5128
 Scotts Creek Mary Knight, P.O. Box 625, Sylva 28779; 586-2444
 Shoal Creek Christine Loiry, Rt. 1, Whittier 28789; 497-9116
 Speedwell None
 Sols Creek None
 Sylva First Sandra James, P.O. Box 197, Whittier 28789; 497-6541
 Tilley Creek None

Trout Creek No Report
 Tuckasegee None
 Unity None
 Webster Karen Frazier, P.O. Box 26, Webster 28788; 586-6043
 Wilkesdale Evelyn Barnes, 5 Henson Hgts., Sylva 28779; 586-4489
 Wilmot None
 Wolf Creek No Report
 Yellow Mountain None
 Zion Hill Helen Bowers, Rt. 2, Sylva 28779; 586-8791
 Associational Director Shirley Kool, 586-5066

Youth Leaders

Balsam None Listed
 Balsam Grove Michael Coward, Rt. 66, Cullowhee 28723; 293-9633
 Big Ridge None Listed
 Black Mountain Ruth Dills, Rt. 67 Box 47, Cullowhee 28723; 293-9706
 Buff Creek Angie Parris, Rt. 1 Box 519, Sylva 28779; 586-8302
 Calvary Sandra Bowers, 586-8526
 Cashiers Lewis Smith, P.O. Box 336, Cashiers 28717; 743-3182
 Cullowhee Connie Price, P.O. Box 168, Cullowhee 28723; 293-9030
 Cullowhee Valley Ronald Pressley, Rt. 66 Box 68, Cullowhee 28723; 293-5492
 Deitz Memorial None Listed
 Dicks Creek Cathy Stiles, Rt. 2 Box 161-B, Whittier 28789; 586-482
 East Fork Barbara Cabe, Rt. 2, Sylva 28779; 586-6728
 East Sylva Katie Hoyle, P.O. Box 516, Sylva 28779; 586-2853 (C)
 Fall Cliff Joyce Green, Rt. 2 Box 89, Sylva 28779; 586-4695
 Hamburg Ervin Booth, Big Ridge, Glenville 28736; 743-5264
 Hyatts Chapel Margaret Gunter, P.O. Box 677, Cherokee 28719; 497-9742
 Jarrett Memorial Janett Ray Buchanan
 June Sisti, P.O. Box 40, Dillsboro 28725; 586-5869
 Johns Creek Michael Queen, 293-9892
 Laurel Branch None Listed
 Liberty Audrey Casey, 42 Ridgeway St., Apt. 9, Sylva 28779; 586-8839
 Little Savannah Rick Frizzell, 586-8832
 Locust Field Sue Coggins
 Long Branch None Listed
 Lovedale J.D. Grant, Rt. 1 Box 874, Sylva 28779; 586-4731
 Lumberton Fred Houston, Rt. 67, Cullowhee 28723; 293-5418
 Moses Creek None Listed
 Mt. Pleasant Lawrence Davis, 586-6648
 New Hope None Listed
 New Savannah May Buchanan, Rt. 2, Sylva 28779; 586-5726
 Ochre Hill None Listed
 Old Savannah Larry Nations, Rt. 2 Box 104, Whittier 28789; 586-6428
 Pine Creek Barbara Henson, Rt. 66, Cullowhee 28723; 743-2345
 Promise Land Helen Millsaps, P.O. Box 51, Tuckasegee 28783; 293-9090
 Rockdale None Listed
 Scotts Creek None Listed
 Shoal Creek None Listed
 Speedwell None Listed
 Sols Creek Nancy Brown, P.O. Box 978, Cashiers 28717; 293-9482
 Sylva First Mike Johnson, P.O. Drawer 1024, Sylva 28779; 586-2095

Tilley CreekNone Listed
TuckasegeeStella Parker, P.O. Box 118, Tuckasegee 28783; 293-9637
UnityBill Dills, Rt. 67 Box 39, Cullowhee 28723; 293-9296
WebsterAnn Hall, 30 Joe Davis Rd.; 586-5200
WilkesdaleJim Barnes, 5 Henson St., Sylva 28779
WilmotJoan Bridges, Box 31C, Whittier 28789; 497-2625
.....Emery Brooks, 8 Macktown Rd., Sylva 28779; 586-3299
Wolf CreekGail Ashe, P.O. Box 265, Tuckasegee 28783; 293-3284
Yellow MountainNone Listed

Treasurers

BalsamJames M. Beck, P.O. Box 351, Hazelwood 28786; 452-4632
Balsam GroveJanet Kilby
Big RidgeNo Report
Black MountainWanda Dills, Rt. 67 Box 47, Cullowhee 28723; 293-9888
Buff CreekBetty Cogdill, Rt. 1, Sylva 28779; 586-8691
CalvaryMarshall Bradley, Rt. 2 Box 144, Sylva 28779; 586-4949
CashiersMartha Wentz, Cashiers 28717; 743-2549
CullowheeAnnie Hoyle, P.O. Box 446, Cullowhee 28723; 293-5354
Cullowhee ValleyGladys German, P.O. Box 2602, Cullowhee 28723; 293-5098
Deitz MemorialRonnie Buchanan, P.O. Box 1634, Sylva 28779; 586-4990
Dicks CreekIna Turpin, Rt. 2 Box 163, Whittier 28789; 586-2273
East ForkAlice Cabe, Rt. 2, Sylva 28779; 586-4621
East SylvaGregg Plemmons, 10 Hilltop Dr., Sylva 28779; 586-9748
Fall CliffNo Report
Greens CreekAileen Green, Rt. 2, Sylva 28779; 586-4677
HamburgBernice Rice, P.O. Box 882, Cashiers 28717; 743-2678
Hyatts ChapelMargaret Gunter, Rt. 1, Whittier 28789; 496-9742
Jarrett MemorialRay Buchanan, P.O. Box 215, Dillsboro 28725; 586-5492
Johns CreekLinda Queen, Rt. 67 Box 141, Cullowhee 28723; 293-5700
Laurel BranchBetty Farmer, Rt. 3 Box 229, Sylva 28779; 586-6582
LibertyWilma Simpson, P.O. Box 313, Sylva 28779; 586-4541
Little SavannahCarolyn Lewis, Rt. 3 Box 243, Sylva 28779; 586-5261
Locust FieldVirginia Pangle, Box 99, Dillsboro 28725; 586-4896
Long BranchCara Wilkey, 35 Monteith Cove Ext., Sylva 28779; 586-5177
LovedaleMrs. Susie Coggins, 404 E. Main St., Sylva 28779; 586-2448
LumbertonFannie Mae Hooper, Rt. 67 Box 97, Cullowhee 28723
Moses CreekMartha Stephens, 53 Sunrise Park, Sylva 28779; 586-5195
Mt. PleasantRobert Henry, Rt. 1, Sylva 28779; 586-4573
New HopeCarolyn Cabe, 12 Joe Davis Rd., Sylva 28779; 586-2636
New SavannahBetty Foxx, Rt. 2 Box 247, Sylva 28779; 586-5608
Ochre HillLewis Keener, Rt. 1 Box 900, Sylva 28779; 586-4276
Old SavannahWoodrow Frady, 130 Sutton Br. Rd., Sylva 28779; 586-4983
Pine CreekBarbara Henderson, Rt. 66 Box 155, Cullowhee 28723; 743-2345
Promise LandCindy Bryson, P.O. Box 89, Tuckasegee 28783; 293-5518
RockdaleGail Allen, Rt. 2, Whittier 28789; 586-6838
Scotts CreekNone Listed
Shoal CreekRobert H. Walker, Rt. 1, Whittier 28789; 497-6628
SpeedwellShirley W. Pressley, 692 Pressley Cr. Rd., Cullowhee 28723; 293-5002
Sols CreekErnest Bryson, Rt. 68, Tuckasegee 28783; 293-9058
Sylva FirstBetty Blanton, 65 Chipper Curve Rd., Sylva 28779; 586-6041
Tilley CreekGeraldene Ashe, 940 Tilley Cr. Rd., Cullowhee 28723

Trout CreekAnne Hollifield, P.O. Box 74, Tuckasegee 28783
TuckasegeePam Bryson, Rt. 67 Box 81B, Cullowhee 28723; 293-3243
UnityNone Listed
WebsterT.C. Lewis, 150 Skyland Dr., Sylva 28779; 586-2794
WilkesdaleLinda Proctor, P.O. Box 1814, Sylva 28779; 586-5868
WilmotDoris McMillan, P.O. Box 1748, Bryson City 28713
Wolf CreekNo Report
Yellow MountainWarren Evitt, Rt. 66, Cullowhee 28723; 743-2174
Zion HillAlonzo Woodard, Rt. 2 Box 257, Sylva 28779; 586-6227
Associational TreasurerJesse Flake, 293-9413

Royal Ambassador Leaders

Mike Moses, Director206 Cope Cr. Rd., Sylva 28779; 586-4423
Leon Martin25 Allen Br. Rd., Sylva 28779; 586-3862
Robert HoltP.O. Box 141, Webster 28788; 586-8465
Alan JohnsonRt. 1, Sylva 28779; 586-3265
Billy MeltonRt. 1 Box 881, Sylva 28779; 586-8038
Ken LoweP.O. Box 292, Sylva 28779; 586-2720
James MasonP.O. Box 181, Webster 28788; 586-6343

Single Adult Leaders

DirectorKeith Campbell, 14 E. Main St., Sylva 28779; 586-2258
Assistant DirectorsNancy Coward, Rivercrest St., Sylva 28779; 586-8564
.....Mrs. Dan Allison, 10 Keener St., Sylva 28779; 586-2065

Ordained Ministers

(Only churches listed reported Ordained Ministers)

BalsamCarroll Ensley, P.O. Box 194, Balsam 28707; 456-7643
.....Kent Lowdermilk, 52 Dolan Dr., Waynesville 28786; 456-6739
Buff CreekRev. Grady Norman, 11 Dillardtown Rd., Sylva 28779; 586-2404
CashiersRev. James N. Madden, Cashiers 28717; 743-3983
East ForkRev. Grover Cabe, Rt. 2, Sylva 28779; 586-4614
East SylvaHarry Vance (R), Rt. 3 Box 299, Sylva 28779; 586-4898
.....Mike Farmer, Fisher Cr. Ed., Sylva 28779; 586-8379
HamburgMarvin Jennings, Glenville 28736
.....Lloyd Franks, Glenville 28736
Locust FieldFrank Brooks, 586-3299
.....Delos Parris (Deceased); Hazen Pangle, 586-8896
Long BranchMarshall Clayton, 586-5606; Charles Carnes, 586-6491
LovedaleRev. R. Melvin Snyder (R), Rt. 3 Box 28779; 586-8840

Historical Table

<u>Year</u>	<u>Session</u>	<u>Place</u>	<u>Date</u>	<u>Moderator</u>	<u>Clerk</u>	<u>Director of Missions</u>	<u>Preacher</u>
1894	65	Franklin	Aug. 16-19	A.H. Sims	T.C. Bryson		
1895	66	Mt. Pleasant	Aug.	A.H. Sims	T.C. Bryson		G.A. Bartlett
1927	98	Tuckasegee	Aug. 18-20	T.F. Deitz	A.J. Dills		
1928	99	Information not available					
1929	100	Cullowhee	Aug. 15	T.F. Deitz	W.C. Reid		
1930	101	Webster	Aug. 14	T.F. Deitz	W.C. Reid		
1931	102	Information not available					
1932	103	Shoal Creek	Aug. 18				
1933	104	Scotts Creek	Aug. 17-20	T.F. Deitz	W.N. Cook		L.K. Stafford
1934	105	Johns Creek	Aug. 16-19	T.F. Deitz	W.N. Cook		
1935	106	Old Savannah	Aug. 15-18	T.F. Deitz	W.N. Cook		J.K. Stafford
1936	107	Lovedale	Aug. 13-16	T.F. Deitz	W.N. Cook		L.H. Crawford
1937	108	Sols Creek	Aug. 12-15	T.F. Deitz			Ben Cook
1938	109	Sylva	Aug. 18-19	T.F. Deitz	W.N. Cook		G.N. Cowan
1939	110	Zion Hill	Aug. 17-18	T.F. Deitz	W.N. Cook		W.N. Cook
1940	111	Moses Creek					L.H. Crawford
1941	112	Ochre Hill	Aug. 14-15	T.F. Deitz	W.N. Cook		
1942	113	Balsam Grove	Aug. 13-14	T.F. Deitz	W.N. Cook		G.C. Teague
1943	114	Hamburg	Aug. 14-15	T.F. Deitz	W.N. Cook		G.C. Teague W.N. Cook
1944	115	Barkers Creek	Aug. 17-18	T.F. Deitz	W.N. Cook	Gretchen Johnson	W.E. Pettit
1945	116	Lovedale	Aug. 16-17	T.F. Deitz	W.N. Cook	Gretchen Johnson	Mark Osborne
1946	117	Cashiers	Aug. 15-16	T.F. Deitz	W.N. Cook	Clarence Vance	F.P. Blankenship
1947	118	Wilkesdale	Aug. 14	C.M. Warren	Jennings Bryson	C. Vance	Dillard Wood
		East Sylva	Aug. 15	C.M. Warren	J. Bryson	Clarence Vance	
1948	119	Hyatts Chapel	Aug. 14	C.M. Warren	J. Bryson	Euva Sentelle	Joe Bishop
		Shoal Creek	Aug. 15				
1949	120	Big Ridge	Aug. 18	C.M. Warren	Euva Sentelle	Pauline Snelson	Melvin Snyder
		Hamburg	Aug. 19				
1950	121		Aug. 17	J.E. Brown	P. Snelson	Pauline Snelson	H.E. Marshbanks
		Yellow Mountain	Aug. 18				
1951	122	Sylva First	Aug. 16	J.E. Brown	Euva Sentelle	P. Snelson	— McGee
		Scotts Creek	Aug. 17				W.C. Reed
1952	123	Buff Creek	Aug. 14	J.E. Brown		P. Snelson	Ralph Nix
		Ochre Hill	Aug. 15				
1953	124	Old Savannah	Aug. 13	J.E. Brown	Carl Corbin	Dorothy Edwards	L.H. Crawford
		East Fork	Aug. 14				
1954	125	Cullowhee	Aug. 12	J.E. Brown	Carl Corbin	Dorothy Edwards	Clyde Collins
		Lovedale	Aug. 13				
1955	126	Lumberton	Aug. 18	J.E. Brown	Carl Corbin	Dorothy Edwards	Roland Pruette
		Balsam Grove	Aug. 19				
1956	127	Hamburg	Aug. 16	J.E. Brown		Dorothy Edwards	Frank Reed
		Tuckasegee	Aug. 17				
1957	128	New Hope	Aug. 15	Edwin Allison	Carl Corbin	Dorothy Edwards	Zeb Barker
		Black Mountain	Aug. 16				
1958	129		Aug. 14	Edward Allison	James Lambert	Alton Hooper	W.L. Sorrells
			Aug. 15				
1959	130	Scotts Creek	Aug. 15	Walter Middleton	J. Lambert	Alton Hooper	
		Balsam	Aug. 16				
1960	131	Rockdale	Aug. 18	Walter Middleton	J. Lambert	Alton Hooper	Quentin Perrault
		New Savannah					Joseph O. Stroud
1961	132	Shoal Creek	Aug. 17	R.W. Abrams	J. Lambert	Alton Hooper	Alton Hooper
		Hyatts Chapel	Aug. 18				Ernest Upchurch
1962	133	Buff Creek	Aug. 16	Ray McCall	J. Lambert	Alton Hooper	Alfred Sellers
		Hamburg	Aug. 17				R.W. Abrams
1963	134	East Sylva	Aug. 15	Ray McCall	J. Lambert	Alton Hooper	James Lambert
		Tuckasegee	Aug. 16				Harry Vance
1964	135	Mt. Pleasant	Aug. 13	Ray McCall	J. Lambert	Alton Hooper	Clyde Collins
		Balsam	Aug. 14				Joseph Reece
1965	136	Yellow Mountain	Aug. 12	Alfred Sellers	J. Lambert	Alton Hooper	Roy Smith
		Scotts Creek	Aug. 13				J.E. Brown
1966	137	Sylva First	Aug. 18	Joseph Reese	Lloyd Fish	Alton Hooper	Lloyd Fish
		Calvary	Aug. 19				A.B. Lovell
1967	138	Ochre Hill		Joseph Reese	Alton Hooper	Alton Hooper	Lloyd Fish
		Rockdale	Aug. 19				George Langley
1968	139	No Minutes published					
1969	140	Old Savannah	Aug. 14	Judson Rotan	Charles Dean	Walter Middleton	Burrell Lucas
		Jarrett Memorial	Aug. 15				Charles Dean
1970	141	Tuckasegee	Aug. 13	Judson Rotan	Charles Dean	Walter Middleton	Charles Bullock
		Buff Creek	Aug. 14				Judson Rotan
1971	142	Zion Hill	Aug. 12	Robert Blanton	Charles Dean	W. Middleton	M. Clayton
		Cullowhee	Aug. 13				Frank Reed

1972	143	Balsam	Aug. 17	Robert Blanton	Annie Hoyle	W. Middleton	Harold Anderson
		Webster	Aug. 18				Charles Dean
1973	144	Cashiers	Aug. 16	John Hyatt	Annie Hoyle	W. Middleton	Jack Holcome
		Lovedale	Aug. 17				Ray McCall
1974	145	Locust Field	Aug. 14	John Hyatt	Annie Hoyle	W. Middleton	L. Jackson
		Greens Creek	Aug. 15				Harold Anderson
1975	146	Liberty	Aug. 14	Robert Blanton	Annie Hoyle	W. Middleton	C.H. Greene
		New Hope	Aug. 15				H. Nicholson
1976	147	Hamburg	Aug. 12	Robert Blanton	Annie Hoyle		Luther Osment
		Long Branch					J.D. Wyatt
1977	148	Shoal Creek	Aug. 16	Wesley Hooper	Annie Hoyle	C.O. Vance	Douglas McFadin
		Black Mountain	Aug. 19			Alvin Loiry, Jr.	Alvin Loiry, Jr.
1978	149	Buff Creek	Aug. 17	Wesley Hooper	Annie Hoyle		Harry Vance
		Yellow Mountain	Aug. 18				Cecil Saunders
1979	150	Balsam Grove	Aug. 16	C.J. Robinson	Annie Hoyle	Alvin Loiry, Jr.	Bill Rogers
		Pine Creek	Aug. 17				
1980	151	East Sylva	Aug. 14	C.J. Robinson	Annie Hoyle	Alvin Loiry, Jr.	Jerry Laughter
		Sylva First	Aug. 15				
1981	152	Ochre Hill	Aug. 13	Ray McCall	Annie Hoyle	Alvin Loiry, Jr.	Patrick Correll
		Hyatts Chapel	Aug. 14				David Blackney
1982	153	East Fork	Aug. 12	Ray McCall	Annie Hoyle	John Reid	Trenton Connelly
		Jarrett Memorial	Aug. 13				George Tuthill
1983	154	Cashiers	Aug. 18	John Enloe	Annie Hoyle	John Reid	Ben Cabe
		Cullowhee	Aug. 19				Jack Hinson
1984	155	Tuckasegee	Aug. 16	John Enloe	Annie Hoyle	John Reid	Carl Smith
		Moses Creek	Aug. 17				S.J. Waters
1985	156	Scotts Creek	Aug. 15	Eddie Stillwell	Annie Hoyle	John Reid	J.D. Griffin
		Old Savannah	Aug. 16				Jack Robinson
1986	157	Balsam	Aug. 12		Annie Hoyle	John Reid	Abe Brooks
		Rockdale	Aug. 21	Mike Moore			Dennis Burrell
1987	158	Zion Hill	Oct. 15	Mike Moore	Annie Hoyle	John Reid	Joe Smith
		Lovedale	Oct. 16				Lewis Smith
1988	159	Jarrett Memorial	Oct. 13	Roy Burnette	Annie Hoyle	John Reid	Glenn Blanton
		Sylva First	Oct. 14				Ray McCall
1989	160	Cashiers	Oct. 12	Roy Burnette	Annie Hoyle	John Reid	Charles Sisti
		Scotts Creek	Oct. 13				Charles Brown

The Tuckaseegee Baptist Association
1989 Annual
 is concluded with the following
Statistical Tables
 for your further information and
 reference.

Table A - Church Membership	58
Table B - Sunday School	60
Table C - Church Training	62
Table D - Music Ministry	64
Table E - Woman's Missionary Union	66
Table F - Brotherhood	68
Table G - Total Receipts, Expenditures, Stewardship	70
Table H - Mission Expenditures	72
Table I - Special Information	74

TABLE A CHURCH MEMBERSHIP & OTHER INFORMATION
 Tuckaseegee
 North Carolina
 Dir. of Assoc. Miss.: Rev. John Reid, P.O. Box 266, Sylva, NC 28779
 Year Ending 6/30/89

CHURCHES	County	Pastor Y/N	Year pastor came	Year organized as a church	Location Code (1 thru 0)	Two Sunday services Y/N	Baptisms under 6 yrs. of age	Baptisms 6-8 yrs. of age	Baptisms 9-11 yrs. of age	Baptisms 12-17 yrs. of age	Baptisms 18-29 yrs. of age	Baptisms 30-59 yrs. of age	Baptisms 60 yrs. & over	Total Baptisms	Other additions (by letter, statement, etc.)	Members lost (by letter, death, statement, etc.)	Present resident members	Present nonresident members	Grand total present members	
BALSAM	Jackson	N	1989	1907	1	Y	0	5	3	0	9	2	0	19	6	12	260	124	384	
BALSAM GROVE	Jackson		1987	1875	1	Y	0	0	0	0	0	0	0	0	2	2	92	21	113	
BIG RIDGE	Jackson		NO	REPORT																
BLACK MOUNTAIN	Jackson	Y	1973	1919	1	Y	0	0	1	0	0	0	0	1	3	4	136	5	141	
BUFF CREEK	Jackson	N	-	1905	1	Y	0	0	3	10	3	5	1	22	10	7	196	42	248	
CALVARY	Jackson	Y	1987	1949	1	Y	0	0	3	0	0	0	0	3	3	0	67	21	88	
CASHIERS	Jackson	Y	1985	1929	3	Y	0	1	1	1	1	3	0	7	7	6	287	90	377	
CULLOWHEE	Jackson	Y	1986	1821	3	N	0	1	0	0	3	3	0	7	17	7	220	80	300	
CULLOWHEE VALLEY	Jackson	Y	1986	1986	1	Y	0	0	0	1	1	1	0	3	6	1	28	4	32	
DEITZ MEMORIAL	Jackson	Y	1980	1956	1	N	0	0	0	0	0	0	0	0	0	71	63			
DICKS CREEK	Jackson	Y	1986	1903	1	N	0	1	0	0	0	0	0	1	1	4	64	46	110	
EAST FORK	Jackson	N	1882	1882	1	Y	0	0	0	0	0	0	0	0	0	7	61	49	110	
EAST SLYVA	Jackson	Y	1966	1921	2	Y	0	0	0	1	1	1	1	4	8	27	458	184	642	
FALL CLIFF	Jackson		NO	REPORT																
GREENS CREEK	Jackson	Y	1987	1921	2	Y	0	0	0	0	0	0	0	0	4	3	125	47	172	
HAMBURG	Jackson		1849	1849	1	Y	0	1	0	0	2	4	0	7	1	9	181	140	321	
HYATTS CHAPEL	Jackson	Y	1989	1916	1	Y	0	0	0	1	1	0	0	2	0	2	151	40	191	
JARRETT MEMORIAL	Jackson	Y	1988	1888	2	Y	0	0	2	1	0	0	0	3	0	3	132	87	219	
JOHNS CREEK	Jackson		1859	1859	1	Y	0	0	4	1	4	1	0	10	3	5	119	115	234	
LAUREL BRANCH	Jackson	Y	1989	1954	4	Y	0	1	1	0	0	0	2	4	3	0	59	59	0	
LIBERTY	Jackson	Y	1988	1871	3	N	0	1	0	1	1	1	0	4	0	5	86	5	91	
LITTLE SAVANNAH	Jackson		1914	1914	1	Y	0	0	0	0	0	0	0	0	2	0	123	0	123	
LOCUST FIELD	Jackson	Y	1971	1895	1	Y	0	0	0	0	3	3	3	1	10	3	9	116	60	176
LONG BRANCH	Jackson	Y	1986	1934	1	N	0	0	2	4	1	1	0	8	2	3	89	45	134	
LOVEDALE	Jackson	Y	1988	1919	1	Y	0	1	0	6	5	3	0	15	32	12	255	142	397	
LUMBERTON	Jackson	Y	1986	1929	1	Y	0	0	0	0	0	0	0	0	0	2	23	27	50	
MOSES CREEK	Jackson	Y	1981	1919	1	Y	0	0	0	0	1	0	0	1	1	2	52	4	56	
MT. PLEASANT	Jackson	Y	1988	1852	1	Y	0	0	2	3	0	0	0	5	5	2	189	205	394	
NEW HOPE	Jackson	Y	1988	1955	1	Y	0	0	4	0	0	1	0	0	5	9	381	105	488	
NEW SAVANNAH	Jackson	Y	1989	1905	1	Y	0	1	0	0	0	0	0	1	3	0	20	12	32	
OCHRE HILL	Jackson	Y	1987	1890	1	Y	0	2	0	1	2	0	0	5	4	18	241	137	378	
OLD SAVANNAH	Jackson		1985	1835	1	Y	0	2	5	0	3	0	0	10	10	2	143	100	343	
PINE CREEK	Jackson	Y	1989	1945	1	Y	0	0	0	0	0	0	0	0	2	4	69	52	121	
PROMISE LAND	Jackson		1989	1989	1	Y	0	0	2	0	0	2	0	4	9	9	63	0	63	
ROCKDALE	Jackson	Y	1986	1947	1	Y	0	0	0	0	0	0	0	0	4	2	83	64	147	
SCOTTS CREEK	Jackson	Y	1987	1830	2	Y	0	2	1	2	2	0	0	7	21	14	477	99	576	
SHOAL CREEK	Jackson	Y	1985	1828	1	N	0	0	0	0	0	0	0	0	3	5	87	48	135	
SPEEDWELL	Jackson		1902	1885	1	Y	0	0	0	0	0	0	0	0	1	4	138	110	248	
SOLS CREEK	Jackson	Y	1985	1902	3	Y	0	0	0	0	0	0	0	0	0	3	50	38	88	
SYLVA FIRST	Jackson	Y	1989	1888	3	Y	0	0	7	0	0	0	0	7	15	36	720	100	820	
TILLEY CREEK	Jackson	Y	1985	1952	1	Y	0	0	0	0	0	0	0	0	0	0	20	27	217	
TROUT CREEK	Jackson		1937	1937																
TUCKASEGEE	Jackson	N	-	1836	1	N	0	0	0	0	0	1	0	1	6	7	92	110	202	
UNITY	Jackson	N		1956	1	Y	0	0	1	1	2	1		5	2	1	182	29	211	
WEBSTER	Jackson		1964	1854	2	Y	0	0	0	0	0	0	0	0	0	1		5	59	
WILKESDALE	Jackson	Y	1986	1931	1	Y	0	0	0	0	0	0	0	0	2	2	50	30	80	
WILMOT	Jackson	Y	1987	1893	1	Y	0	0	0	0	0	0	0	0	0	4	74	98	172	
WOLF CREEK	Jackson		NO	REPORT																
YELLOW MOUNTAIN	Jackson	Y	1988	1878	1	Y	0	0	0	0	0	0	0	3	3	6	236	45	281	
ZION HILL	Jackson	Y	1989	1900	1	Y	0	0	0	0	0	0	0	0	3	5	175	134	309	
TOTALS							0	19	39	33	45	33	5	174	212	286	7,020	242	9,262	
PREVIOUS YEAR TOTALS														107	203	293	6,571	2,830	9,253	

TABLE B SUNDAY SCHOOL

Tuckasegee
 North Carolina
 Assoc. SS Dir.: Rev. Barry
 Almand, P.O. Box 2091, Sylva,
 NC 28779
 Year Ending 6/30/89

CHURCHES

	54	55	56	57	58	59	60	61	62	63	64	65	66	67	68	69	70	71	72	73
	Cradle Roll enrollment (Birth to 2 years)	Preschool enrollment (Birth through 5 years)	Children enrollment (6-11 years or grades 1-6)	Youth enrollment (12-17 years or grades 7-12)	Young Adult enrollment—Single (18-29 years or H.S. graduation through 29 years)	Young Adult enrollment—Married (18-29 years or H.S. graduation through 29 years)	Adult enrollment (30-59 years)	Senior Adult enrollment (60 and over)	Adults Away enrollment	Homebound enrollment	General officers enrollment	Enrollment of mission(s) of church	Total ongoing Sunday School enrollment	Average weekly Sunday School attendance	Number in Outreach Bible Study groups	Weekly Evangelistic visitation Y = Yes N = no	Number ethnic Sunday School members	Church V.B.S. enrollment	Mission V.B.S. enrollment	Backyard Bible Club enrollment
BALSAM	5	7	12	10	22	20	24	30	0	0	7	0	137	130	65	W	0	100	0	0
BALSAM GROVE	0	1	1	1	6	4	17	20	0	0	5	0	56	48	0	N	0	N/A	N/A	N/A
BIG RIDGE	NO	REPORT																		
BLACK MOUNTAIN	2	2	10	8	2	6	32	14	0	3	10	5	88	60	0	N	0	25	0	0
BUFF CREEK	3	1	7	17	7	13	20	30	0	0	2	0	100	68	-	N	0	73	0	0
CALVARY	3	4	7	5	3	6	14	8	0	0	11	0	61							
CASHIERS	0	6	20	22	15	0	59	25	0	0	4	0	151	99	0	Y	0	60	0	0
CULLOWHEE	0	9	12	6	30	6	41	36	0	0	3	22	165	100	0	N	0	137	28	0
CULLOWHEE VALLEY	0	5	3	4	4	3	13	5	0	0	0	0	37	18	0	N	0	43	0	0
DEITZ MEMORIAL	2	3	1	3	2	2	17	9	0	0	4	0	45	35	0	N	0	0	0	0
DICKS CREEK	0	5	6	4	1	2	8	10	0	0	4	0	40	28	0	N	0	52	0	0
EAST FORK	0	0	0	5	5	0	12	15	0	0	7	0	44	34	0	N	0	0	0	0
EAST SYLVA	6	18	36	13	14	36	86	63	0	12	13	0	297	120	0	N	0	102	0	0
FALL CLIFF	NO	REPORT																		
GREENS CREEK	0	9	8	15	0	18	27	15	0	7	3	0	100	40	0	N	0	41	0	0
HAMBURG	2	11	16	7	9	20	37	9	0	0	3	0	114	71	0	N	7	76	0	0
HYATTS CHAPEL	0	6	4	8	1	3	34	42	0	0	5	0	103	63	0	N	0	87	0	0
JARRETT MEMORIAL	0	8	5	10	4	5	8	18	0	0	2	0	60	32	0	N	0	32	0	0
JOHNS CREEK	0	4	7	6	8	7	23	7	0	0	3	0	65	65	0	N	0	0	0	0
LAUREL BRANCH	0	0	0	0	0	0	0	0	0	0	0	0	0	0	0	N	0	0	0	0
LIBERTY	0	8	11	13	0	0	12	0	0	0	3	0	47	27	N	N	0	41	0	0
LITTLE SAVANNAH	0	6	16	12	3	3	22	11	0	0	5	12	90	37	0	N	0	52	0	0
LOCUST FIELD	0	14	0	17	0	14	18	15	0	0	6	0	84	56	0	N	0	62	0	0
LONG BRANCH	0	1	12	5	6	5	25	14	0	0	6	0	74	45	0	N	0	40	0	0
LOVEDALE	6	3	9	11	13	12	30	40	0	0	5	0	136	94	0	N	0	66	0	0
LUMBERTON	0	0	1	3	0	0	8	9	0	0	3	0	24	24	0	N	0	35	0	0
MOSES CREEK	0	2	3	2	2	4	12	12	0	0	0	0	37	35	0	N	0	32	0	0
MT. PLEASANT	2	5	7	9	1	1	22	16	0	0	0	0	63	63	0	N	0	82	0	0
NEW HOPE	0	15	13	17	4	12	66	30	0	0	4	0	161	104	0	N	0	123	0	0
NEW SAVANNAH	1	0	2	1	1	2	5	12	0	0	5	0	29	0	0	0	0	0	0	0
OCHRE HILL	0	1	14	10	3	10	42	26	0	0	3	16	142	92	0	N	0	51	0	0
OLD SAVANNAH	0	14	10	3	0	12	12	18	-	-	4	0	73	45	0	N	-	52	0	0
PINE CREEK	0	2	1	4	0	0	18	5	0	0	2	0	32	30	0	N	0	25	0	0
PROMISE LAND	0	3	5	9	2	6	15	5	0	0	0	0	45	39	0	N	0	43	0	0
ROCKDALE	0	4	4	5	3	6	7	14	0	0	2	0	45	32	0	Y	0	66	0	0
SCOTTS CREEK	0	28	32	46	19	34	79	99	0	20	6	0	363	134	0	N	0	65	0	0
SHOAL CREEK	0	1	0	0	2	2	9	14	0	0	2	0	30	19	0	N	1	0	0	0
SPEEDWELL	0	4	10	15	0	10	15	18	0	2	10	0	84	46	0	N	0	84	0	0
SOLS CREEK	0	0	5	18	7	0	0	0	0	0	0	0	30	20	0	Y	0	40	0	0
SYLVA FIRST	4	10	37	43	32	19	178	43	10	15	3	0	394	167	0	N	0	75	0	0
TILLEY CREEK	0	3	0	0	2	2	9	7	0	2	3	0	28	25	0	Y	0	0	0	0
TROUT CREEK	NO	REPORT																		
TUCKASEGEE	0	3	9	13	0	0	13	16	0	0	1	0	55	37	0	Y	0	0	0	0
UNITY	0	2	3	5	2	4	32	5	0	0	7	0	60	60	0	N	0	0	0	0
WEBSTER	3	6	8	10	2	15	25	10	-	-	2	-	81	35	-	N	-	35	-	-
WILKESDALE	0	0	0	2	3	0	9	12	0	0	6	0	22	25	0	N	0	0	0	0
WILMOT	0	2	0	4	1	0	10	10	0	0	2	0	31	29	0	Y	0	43	0	0
WOLF CREEK	NO	REPORT																		
YELLOW MOUNTAIN	0	4	8	10	12	14	10	24	0	0	8	0	90	46	0	N	0	42	0	0
ZION HILL	0	4	5	4	6	0	16	32	0	0	9	0	76	61	0	N	0	52	0	0
TOTALS	35	236	383	445	258	322	1,052	873	10	61	210	55	4,009	2,493	65		6	2,034	28	0
PREVIOUS YEAR TOTALS	43	295	1,677	768	295	811	1,270	865	63	79	185	35	4,332	2,499	101			1,860	0	4

TABLE C CHURCH TRAINING													74	75	76	77	78	79	80	81	82	83	84	85	86
Tuckasegee North Carolina Assoc. CT Director: None Year Ending 6/30/89													Preschool enrollment (5 years and under - not in school)	Children enrollment (6-11 years or grades 1-6)	Youth enrollment (12-17 years or grades 7-12)	Adult enrollment (18 and over)	Equipping Centers enrollment	N.C.M.T./Survival Kit enrollment	MasterLife enrollment	Other enrollment	Hold File enrollment	General officers enrollment	Enrollment of mission(s) of church	Total Church Training enrollment	Average weekly Church Training attendance
CHURCHES																									
BALSAM				14	0	0	0	0	0	8	0	46	68												
BALSAM GROVE	0	0	0	0	0	0	0	0	0	0	0	0	0												
BIG RIDGE		NO REPORT																							
BLACK MOUNTAIN	0	0	0	0	0	0	0	0	0	0	0	0	0												
BUFF CREEK	0	0	0	0	0	0	0	0	0	0	0	0	0												
CALVARY	0	4	0	19	0	0	0	0	0	4	0	27	16												
CASHIERS	4	4	18	18	0	0	0	5	0	4	0	54	46												
CULLOWHEE	0	0	0	0	0	0	20	0	0	0	0	0	0												
CULLOWHEE VALLEY	0	0	1	10	0	0	0	0	0	0	0	11	10												
DEITZ MEMORIAL	0	0	0	0	0	0	0	0	0	0	0	0	0												
DICKS CREEK	0	0	0	0	0	0	0	0	0	0	0	0	0												
EAST FORK	0	0	5	19	0	0	0	0	0	4	0	25	17												
EAST SYLVA	4	20	10	20	0	0	0	0	0	4	0	58	30												
FALL CLIFF		NO REPORT																							
GREENS CREEK	0	0	0	16	0	0	0	0	0	1	0	17	13												
HAMBURG	5	6	7	18	0	0	0	0	7	2	0	18	24												
HYATTS CHAPEL	2	2	5	23	0	0	0	0	0	5	0	37	30												
JARRETT MEMORIAL	4	6	8	18	0	0	0	0	0	2	0	38	25												
JOHNS CREEK	0	0	0	0	0	0	0	0	0	0	0	0	0												
LAUREL BRANCH	0	0	0	0	0	0	0	0	0	0	0	0	0												
LIBERTY	0	0	0	0	0	0	0	0	0	0	0	0	0												
LITTLE SAVANNAH	4	4	4	16	0	0	0	0	0	2	0	30	21												
LOCUST FIELD	1	5	5	21	0	0	0	0	0	4	0	36	30												

-62-

LONG BRANCH	6	4	30	0	0	0	0	0	5	0	0	45	30
LOVEDALE	0	0	0	0	0	10	0	0	10	2	0	12	0
LUMBERTON	0	0	0	0	0	0	0	0	0	0	0	0	0
MOSES CREEK	0	0	0	0	0	0	0	0	0	0	0	0	0
MT. PLEASANT	0	0	0	0	0	0	0	0	0	0	0	0	0
NEW HOPE		7	8	4	0	0	0	0	0	0	0	22	16
NEW SAVANNAH	0	0	0	0	0	0	0	0	0	0	0	0	0
OCHRE HILL	5	5	6	12	0	3	0	14	0	2	0	44	31
OLD SAVANNAH	2	10	0	27	0	0	0	0	0	3	0	43	20
PINE CREEK	0	0	0	0	0	0	0	0	0	0	0	0	0
PROMISE LAND	0	0	0	0	0	0	0	0	5	0	0	0	0
ROCKDALE	0	0	0	0	0	0	0	0	0	0	0	0	0
SCOTTS CREEK	5	16	6	56	49	2	0	0	23	2	0	158	39
SHOAL CREEK	0	0	0	0	0	0	0	0	0	0	0	0	0
SPEEDWELL	0	8	12	22	0	0	0	0	0	3	0	45	30
SOLS CREEK	0	0	0	0	0	0	0	0	0	0	0	0	0
SYLVA FIRST	0	0	0	0	0	0	0	20	0	1	0	21	15
TILLEY CREEK	0	0	0	0	0	0	0	0	0	0	0	0	0
TROUT CREEK		NO REPORT											
TUCKASEGEE	0	0	0	0	0	0	0	0	0	0	0	0	0
UNITY	0	0	0	0	0	0	0	0	0	0	0	0	0
WEBSTER	1	4	8	10	0	0	0	0	0	1	0	24	14
WILKESDALE	0	0	0	31	0	0	0	0	0	2	0	31	22
WILMOT	0	0	0	0	0	0	0	0	0	0	0	0	0
WOLF CREEK		NO REPORT											
YELLOW MOUNTAIN	0	0	7	6	0	0	0	0	0	2	0	15	14
ZION HILL	3	3	8	30	0	0	0	0	0	4	0	48	30
TOTALS	53	114	158	40	49	15	20	39	52	0	0	905	591
PREVIOUS YEAR TOTALS													

-63-

TABLE D MUSIC MINISTRY Tuckaseegee North Carolina Assoc. Music Dir.: Rev. Harry Vance, Rt. 3 Box 299, Sylva, NC 28779 Year Ending 6/30/89		87	88	89	90	91	92	93	94	95	96	97	98
CHURCHES		Preschool enrollment	Younger children's enrollment (6-8 years)	Older children's enrollment (9-11 years)	Youth enrollment (12-17 years)	Adult enrollment (18 and over)	Handbell ringers enrollment	Vocal ensembles enrollment	Instrumental ensembles enrollment	General music leaders enrollment	Enrollment of Mission(s) of church	Total ongoing Music Ministry enrollment	Average weekly Music Ministry attendance
BALSAM	7	6	7	22	14	0	0	7	4	0	63	60	
BALSAM GROVE	0	0	0	2	23	0	3	2	3	0	33	27	
BIG RIDGE	NO	REPORT											
BLACK MOUNTAIN	2	4	2	5	12	0	10	4	4	0	43	24	
BUFF CREEK	0	3	2	7	20	0	5	0	4	0	36	30	
CALVARY	0	1	2	1	14	0	0	0	3	0	21	21	
CASHIERS	0	0	0	0	23	0	1	0	5	0	29	12	
CULLOWHEE	6	6	2	0	23	10	8	0	6	0	61	40	
CULLOWHEE VALLEY	0	0	0	1	12	0	0	0	1	0	14	12	
DEITZ MEMORIAL	1	1	0	3	12	0	3	0	2	0	22	12	
DICKS CREEK	0	0	0	0	0	0	0	0	0	0	0	0	
EAST FORK	0	0	0	2	19	0	0	0	2	0	23	-	
EAST SYLVA	6	10	10	12	30	0	0	0	3	0	71	35	
FALL CLIFF	NO	REPORT											
GREENS CREEK	0	0	0	0	11	0	0	0	2	0	13	12	
HAMBURG	0	0	5	0	9	0	6	0	4	0	34	10	
HYATTS CHAPEL	2	0	0	5	13	0	0	0	1	0	21	18	
JARRETT MEMORIAL	0	0	0	0	0	0	0	0	0	0	0	0	
JOHNS CREEK	0	1	4	4	25	0	4	1	2	0	42	0	
LAUREL BRANCH	0	0	0	0	0	0	0	0	0	0	0	0	
LIBERTY	0	0	0	0	14	0	0	0	2	0	13	8	
LITTLE SAVANNAH	0	0	4	0	16	0	0	0	4	0	24	20	
LOCUST FIELD	0	3	0	7	8	0	0	0	1	0	19	15	

-64-

LONG BRANCH	0	2	4	6	4	0	0	0	4	0	20	16
LOVEDALE	0	3	3	10	35	0	4	4	2	0	61	25
LUMBERTON	0	0	0	1	10	0	0	0	2	3	26	20
MOSES CREEK	0	0	1	1	13	0	0	0	2	0	17	15
MT. PLEASANT	0	0	0	0	20	0	0	0	5	0	25	20
NEW HOPE	0	1	1	2	30	0	0	0	4	0	38	10
NEW SAVANNAH	0	0	0	0	0	0	0	0	0	0	0	0
OCHRE HILL	4	4	3	4	20	0	6	1	5	0	47	20
OLD SAVANNAH	0	0	0	0	0	0	0	0	0	0	0	0
PINE CREEK	0	0	0	0	0	0	0	0	0	0	0	0
PROMISE LAND	1	2	5	8	10	0	1	0	2	0	29	15
ROCKDALE	0	0	0	1	13	0	0	0	3	0	17	14
SCOTTS CREEK	87	8	10	1	29	0	5	0	3	0	60	40
SHOAL CREEK	0	0	0	0	11	0	0	0	3	0	14	6
SPEEDWELL	0	0	5	10	12	0	4	0	4	0	35	15
SOLS CREEK	0	0	0	0	0	0	0	0	0	0	0	0
SYLVA FIRST	5	7	18	16	40	14	12	8	11	10	151	70
TILLEY CREEK	0	0	0	3	12	0	0	0	2	0	17	12
TROUT CREEK	NO	REPORT										
TUCKASEGEE	0	2	3	3	10	0	0	0	2	0	20	-
UNITY	1	3	2	3	16	0	4	0	3	0	32	0
WEBSTER	0	0	0	0	12	0	0	0	4	0	10	8
WILKESDALE	0	0	0	0	0	0	0	0	0	0	0	0
WILMOT	0	0	0	0	0	0	0	0	0	0	0	0
WOLF CREEK	NO	REPORT										
YELLOW MOUNTAIN	0	0	0	0	0	0	0	0	0	0	0	0
ZION HILL	0	3	2	3	11	0	2	0	3	0	24	12
TOTALS	117	70	95	148	614	24	78	23	17	13	1,225	674
PREVIOUS YEAR TOTALS												

-65-

TABLE E WOMAN'S MISSIONARY UNION Tuckasegee North Carolina Assoc. WMU Dir.: Mrs. Shirley Kool, 21 Parris Cemetery Rd., Sylva, NC 28779 Year Ending 6/30/89	99	100	101	102	103	104	105	106	107	108	109	110	111	112	113
	Number of Organizations							Enrollment							
	Mission Friends (5 years and under - not in school)	Girls in action (6-11 years or grades 1-6)	Acteens (12-17 years or grades 7-12)	Baptist Young Women (18-29 years or H.S. graduation through 29 years)	Baptist Women (30 and over)	Mission(s) of church	Total number of organizations	Mission Friends (5 years and under - not in school)	Girls in Action (6-11 years or grades 1-6)	Acteens (12-17 years or grades 7-12)	Baptist Young Women (18-29 years or H.S. graduation through 29 years)	Baptist Women (30 and over)	WMU officers	Mission(s) of church	Total ongoing WMU enrollment
CHURCHES															
BALSAM	0	0	0	0	0	0	0	0	0	0	0	18	5	0	23
BALSAM GROVE	0	0	0	0	0	0	0	0	0	0	0	0	0	0	0
BIG RIDGE	NO REPORT														
BLACK MOUNTAIN	0	0	0	0	0	0	0	0	0	0	0	0	0	0	0
BUFF CREEK	1	1	1	0	1	1	5	7	8	5	0	12	4	0	36
CALVARY	0	0	0	0	0	0	0	0	0	0	0	0	0	0	0
CASHIERS	1	1	1	0	1	0	4	6	7	8	0	20	1	0	42
CULLOWHEE	1	1	0	0	2	0	5	5	4	0	12	20	6	0	47
CULLOWHEE VALLEY	0	0	1	0	0	1	2	0	0	6	0	8	2	0	16
DEITZ MEMORIAL	0	0	0	0	0	0	0	0	0	0	0	0	0	0	0
DICKS CREEK	0	0	0	0	1	0	1	0	0	0	0	7	2	0	9
EAST FORK	0	0	0	0	0	0	0	0	0	0	0	0	0	0	0
EAST SYLVA	1	1	0	0	1	0	3	10	10	0	0	21	1	0	42
FALL CLIFF	NO REPORT														
GREENS CREEK	0	0	0	0	1	0	1	0	0	0	0	10	1	0	11
HAMBURG	1	1	0	0	1	0	4	6	5	0	2	19	1	0	33
HYATTS CHAPEL	0	0	0	0	0	0	0	0	0	0	0	0	0	0	0
JARRETT MEMORIAL	1	1	0	0	1	0	3	7	9	0	0	12	3	0	31
JOHNS CREEK	0	0	0	0	0	0	0	0	0	0	0	0	0	0	0
LAUREL BRANCH	0	0	0	0	0	0	0	0	0	0	0	0	0	0	0
LIBERTY	0	0	0	0	1	0	1	0	0	0	0	8	3	0	11
LITTLE SAVANNAH	1	1	0	0	1	0	3	4	4	0	0	11	2	0	21
LOCUST FIELD	0	1	0	0	1	0	2	0	9	0	0	11	2	0	22
LONG BRANCH	0	0	0	0	0	0	1	1	0	0	0	0	10	4	14
LOVEDALE	0	0	0	0	1	0	1	0	0	0	0	13	1	0	14
LUMBERTON	0	0	0	0	0	0	0	0	0	0	0	0	0	0	0
MOSES CREEK	0	0	0	0	0	0	0	0	0	0	0	0	0	0	0
MT. PLEASANT	1	0	0	0	0	0	2	1	0	0	0	0	2	12	15
NEW HOPE	0	0	0	0	0	0	1	0	0	0	0	24	3	0	27
NEW SAVANNAH	0	0	0	0	0	0	0	0	0	0	0	0	0	0	0
OCHRE HILL	1	1	1	0	1	0	4	5	6	4	0	8	3	26	26
OLD SAVANNAH	0	0	0	0	1	0	1	0	0	0	0	0	2	15	17
PINE CREEK	0	0	0	0	0	0	0	0	0	0	0	0	0	0	0
PROMISE LAND	0	0	0	0	0	0	0	0	0	0	0	3	1	0	4
ROCKDALE	1	1	1	1	4	0	8	6	6	12	17	45	4	0	90
SCOTTS CREEK	0	0	0	0	1	0	1	0	0	0	0	11	3	0	14
SHOAL CREEK	0	0	0	0	0	0	0	0	0	0	0	0	0	0	0
SPEEDWELL	0	0	0	0	0	0	0	0	0	0	0	0	0	0	0
SOLS CREEK	0	0	0	0	0	0	0	0	0	0	0	0	0	0	0
SYLVA FIRST	0	0	0	0	0	0	0	0	0	0	0	0	0	0	0
TILLEY CREEK	0	0	0	0	0	0	0	0	0	0	0	0	0	0	0
TROUT CREEK	0	0	0	0	0	0	0	0	0	0	0	0	0	0	0
TUCKASEGEE	0	0	0	0	0	0	0	0	0	0	0	0	0	0	0
UNITY	0	0	0	0	0	0	0	0	0	0	0	0	0	0	0
WEBSTER	0	0	0	0	1	0	1	0	0	0	0	16	0	0	16
WILKESDALE	0	0	0	0	0	0	0	0	0	0	0	0	4	0	10
WILMOT	0	0	0	0	0	0	0	0	0	0	0	0	0	0	0
WOLF CREEK	0	0	0	0	0	0	0	0	0	0	0	0	0	0	0
YELLOW MOUNTAIN	0	0	0	0	0	0	0	0	0	0	0	0	0	0	0
ZION HILL	0	0	0	0	1	0	1	0	0	0	0	8	3	0	11
TOTALS	8	10	5	0	22	0	50	58	68	35	31	305	69	57	602
PREVIOUS YEAR TOTALS															

TABLE F BROTHERHOOD		114	115	116	117	118	119	120	121	122	123
Tuckasegee North Carolina Assoc. Bro'hood Dir.: Elmer Hooper, P.O. Box 2317, Cullowhee, NC 28723 Year Ending 6/30/89		Lads (6-8 years or grades 1-3)	Crusaders (9-11 years or grades 4-6)	Pioneers (12-14 years or grades 7-9)	RA Director and committee	High School Baptist Young Men enrollment	Baptist Young Men enrollment	Baptist Men enrollment	Brotherhood director and other general Brotherhood Officers	Enrollment of mission(s) of church	Total ongoing Brotherhood enrollment
CHURCHES											
BALSAM	0	0	0	0	0	0	0	0	0	0	0
BALSAM GROVE	0	0	0	0	0	0	0	0	0	0	0
BIG RIDGE	NO	REPORT									
BLACK MOUNTAIN	0	0	0	0	0	0	0	0	0	0	0
BUFF CREEK	0	6	15	3	0	0	12	1	0	0	37
CALVARY	0	0	0	0	0	0	0	0	0	0	0
CASHIERS	0	0	0	0	0	0	0	0	0	0	0
CULLOWHEE	7	6	0	2	0	11	13	4	0	0	43
CULLOWHEE VALLEY	0	0	0	0	0	0	0	0	0	0	0
DEITZ MEMORIAL	0	0	0	0	0	0	0	0	0	0	0
DICKS CREEK	0	0	0	0	0	0	0	0	0	0	0
EAST FORK	0	0	0	0	0	0	0	0	0	0	0
EAST SYLVA	0	0	0	0	0	0	0	0	0	0	0
FALL CLIFF	NO	REPORT									
GREENS CREEK	0	0	0	0	0	0	0	0	0	0	0
HAMBURG	1	1	0	2	2	4	16	0	0	0	26
HYATTS CHAPEL	0	0	0	0	0	0	0	0	0	0	0
JARRETT MEMORIAL	0	0	0	0	0	0	0	0	0	0	0
JOHNS CREEK	0	0	0	0	0	0	0	0	0	0	0
LAUREL BRANCH	0	0	0	0	0	0	0	0	0	0	0
LIBERTY	0	0	0	0	0	0	4	1	0	0	5
LITTLE SAVANNAH	0	0	0	0	0	0	0	0	0	0	0
LOCUST FIELD	0	0	0	0	0	0	0	0	0	0	0

-89-

LONG BRANCH	0	0	0	0	0	0	0	0	0	0	0
LOVEDALE	0	0	0	0	0	0	0	0	0	0	0
LUMBERTON	0	0	0	0	0	0	0	0	0	0	0
MOSES CREEK	0	0	0	0	0	0	0	0	0	0	0
MT. PLEASANT	0	0	0	0	0	0	0	0	0	0	0
NEW HOPE	0	0	0	0	0	0	0	0	0	0	0
NEW SAVANNAH	0	0	0	0	0	0	0	0	0	0	0
OCHRE HILL	6	1	0	2	0	0	0	0	0	0	7
OLD SAVANNAH	0	14	0	1	0	0	0	0	14	0	15
PINE CREEK	0	0	0	0	0	0	0	0	0	0	0
PROMISE LAND	0	0	0	0	0	0	0	0	0	0	0
ROCKDALE	0	0	0	0	0	0	4	1	0	0	5
SCOTTS CREEK	0	2	6	1	0	0	16	1	0	0	26
SHOAL CREEK	0	0	0	0	0	0	0	0	0	0	0
SPEEDWELL	0	0	0	0	0	0	0	0	0	0	0
SOLS CREEK	0	0	0	0	0	0	0	0	0	0	0
SYLVA FIRST	11	4	0	1	6	6	10	1	0	0	39
TILLEY CREEK	0	0	0	0	0	0	0	0	0	0	0
TROUT CREEK	NO	REPORT									
TUCKASEGEE	0	0	0	0	0	0	0	0	0	0	0
UNITY	0	0	0	0	0	0	0	0	0	0	0
WEBSTER	0	0	0	0	0	0	0	0	0	0	0
WILKESDALE	0	0	0	0	0	0	0	0	0	0	0
WILMOT	0	0	0	0	0	0	0	0	0	0	0
WOLF CREEK	NO	REPORT									
YELLOW MOUNTAIN	0	0	0	0	0	0	0	0	0	0	0
ZION HILL	0	0	0	0	0	0	0	0	0	0	0
TOTALS	25	34	13	12	8	21	75	8	14	0	203
PREVIOUS YEAR TOTALS	14	25	13	62	23	27	14	9	38	0	188

-69-

TABLE G TOTAL RECEIPTS, LOCAL EXPENDITURES & STEWARDSHIP												
Tuckasegee North Carolina Assoc. Treas.: Jesse Flake, Rt. 86 Box 57, Cullowhee, NC 28723 Year Ending 6/30/89												
CHURCHES	124	125	126	127	128	129	130	131	132	133	134	135
	Undesignated gifts, offerings, etc.	Designated Gifts, Offerings, etc.	Total tithes, all offerings, and special gifts	All other receipts	Total Receipts	Money borrowed during the year	Church staff salaries	Money paid out on new construction during the year	Debt retirement during	Church literature	All other local expenditures	Total local expenditures
BALSAM	12,790	0	12,790	0	12,790	0	5,070	0	0	352	803	7,225
BALSAM GROVE	7,120	0	7,120	0	7,120	0	5,150	86	0	339	890	6,465
BIG RIDGE	NO	REPORT										
BLACK MOUNTAIN	15,585	22,805	38,389	0	38,389	0	3,660	4,655	0	675	3,585	12,574
BUFF CREEK	45,909	7,653	53,562	0	53,562	0	20,395	0	0	1,486	35,881	57,762
CALVARY	14,147	288	14,435	0	14,435	0	7,105	0	0	465	3,185	10,755
CASHIERS	76,977	48,277	125,254	0	125,254	0	30,950	0	0	5,775	10,869	47,594
CULLOWHEE	30,225	88,952	119,177	200	121,371	0	54,802	17,449	0	1,700	4,638	78,589
CULLOWHEE VALLEY	14,574	1,625	16,199	0	16,199	0	3,000	2,101	9,124	716	340	15,281
DEITZ MEMORIAL	10,063	143	10,206	0	10,206	0	3,000	0	0	425	1,348	4,773
DICKS CREEK	7,841	840	8,681	0	8,681	0	2,240	523	0	321	4,328	7,412
EAST FORK	14,305	1,553	15,858	0	15,858	0	5,191	0	0	431	5,714	11,357
EAST SYLVA	80,417	22,107	108,524	3,938	106,462	0	41,328	0	0	3,605	29,130	74,063
FALL CLIFF	NO	REPORT										
GREENS CREEK	30,824	5,882	36,706	818	37,522	0	14,040	0	0	979	8,390	23,409
HAMBURG	48,119	27,091	75,211	0	75,211	0	22,270	0	0	3,972	19,701	45,943
HYATTS CHAPEL	3,412	5,524	39,784	0	0	0	11,645	0	0	842	81,637	21,631
JARRETT MEMORIAL	25,159	3,772	28,931	0	28,931	0	17,800	0	0	1,752	4,613	24,165
JOHNS CREEK	1,602	1,914	3,516	0	3,516	0	2,517	0	0	320	1,940	4,777
LAUREL BRANCH	0	0	0	0	0	0	0	0	0	0	0	0
LIBERTY	12,790	0	12,790	0	12,790	0	5,070	0	0	352	1,803	7,225
LITTLE SAVANNAH	26,697	3,987	30,684	240	30,924	0	15,039	5,191	0	1,362	4,402	25,994
LOCUST FIELD	10,109	7,407	17,516	0	17,516	0	7,481	421	0	479	8,544	16,935
LONG BRANCH	14,351	1,264	15,615	0	15,615	0	6,800	0	0	655	4,233	11,686
LOVEDALE	60,990	7,289	68,279	0	68,279	0	19,300	34,156	0	2,676	10,024	66,156
LUMBERTON	0	3,441	0	1,951	0	0	63	44	0	63	44	2,058
MOSES CREEK	13,077	0	13,077	0	13,077	0	9,100	0	1,880	220	1,464	12,664
MT. PLEASANT	20,306	17,000	37,306	0	37,306	0	12,970	29,054	0	1,146	2,565	45,735
NEW HOPE	38,101	11,690	49,791	5,319	55,110	0	17,750	0	0	2,554	15,041	35,345
NEW SAVANNAH	571,841	1,387	3,228	0	3,228	0	2,505	1,643	0	318	10,148	14,296
OCHRE HILL	57,944	9,230	67,174	0	67,174	5,500	27,262	0	5,686	3,773	19,153	55,874
OLD SAVANNAH	11,725	2,935	22,660	0	22,660	0	13,601	0	0	1,035	3,284	17,917
PINE CREEK	13,235	0	13,235	0	13,235	0	4,400	0	0	287	5,500	10,189
PROMISE LAND	-	-	-	-	-	58,000	2,080	38,000	58,000	-	1,200	99,280
ROCKDALE	14,181	0	14,181	0	14,181	0	5,720	0	0	610	10,215	16,545
SCOTTS CREEK	108,639	45,586	154,225	0	154,225	0	47,954	0	0	5,500	65,000	118,454
SHOAL CREEK	33,761	4,994	38,755	4,023	42,778	0	16,435	2,457	0	868	5,438	25,198
SPEEDWELL	4,772	3,520	8,292	0	8,292	0	5,964	0	0	943	4,204	11,111
SOLS CREEK	0	0	0	0	0	0	0	0	0	0	0	875
SYLVA FIRST	258,999	65,095	324,094	5,456	329,551	0	118,870	65,000	0	3,440	49,117	236,427
TILLEY CREEK	1,000	0	1,000	0	0	0	0	0	0	0	600	600
TROUT CREEK	NO	REPORT										
TUCKASEGEE	27,424	0	27,424	0	27,424	0	8,025	0	0	698	4,370	13,153
UNITY	6,759	5,004	11,763	0	11,763	0	1,025	7,746	0	122	9,062	17,355
WEBSTER	95,681	4,419	100,100	254	100,254	0	11,200	0	0	582	10,424	22,206
WILKESDALE	10,364	500	10,864	0	10,864	0	6,860	0	0	494	2,708	9,962
WILMOT		2,274	6,175	0	6,175	0	1,109	0	0	98	3,618	4,815
WOLF CREEK	NO	REPORT										
YELLOW MOUNTAIN	0	23,085	23,085	0	23,085	0	9,300	362	0	674	7,820	18,156
ZION HILL	0	5,994	5,994	0	5,994	0	9,984	0	0	978	5,902	16,864
TOTALS	1,307,812	485,527	1,793,339	41,999	17,505,217	63,500	637,267	208,365	74,690	54,082	589,315	1,437,850
PREVIOUS YEAR TOT.	1,183,044	294,807	1,477,851	66,394	1,550,449	96,000	652,615	140,329	107,463	50,839	324,283	1,869,630

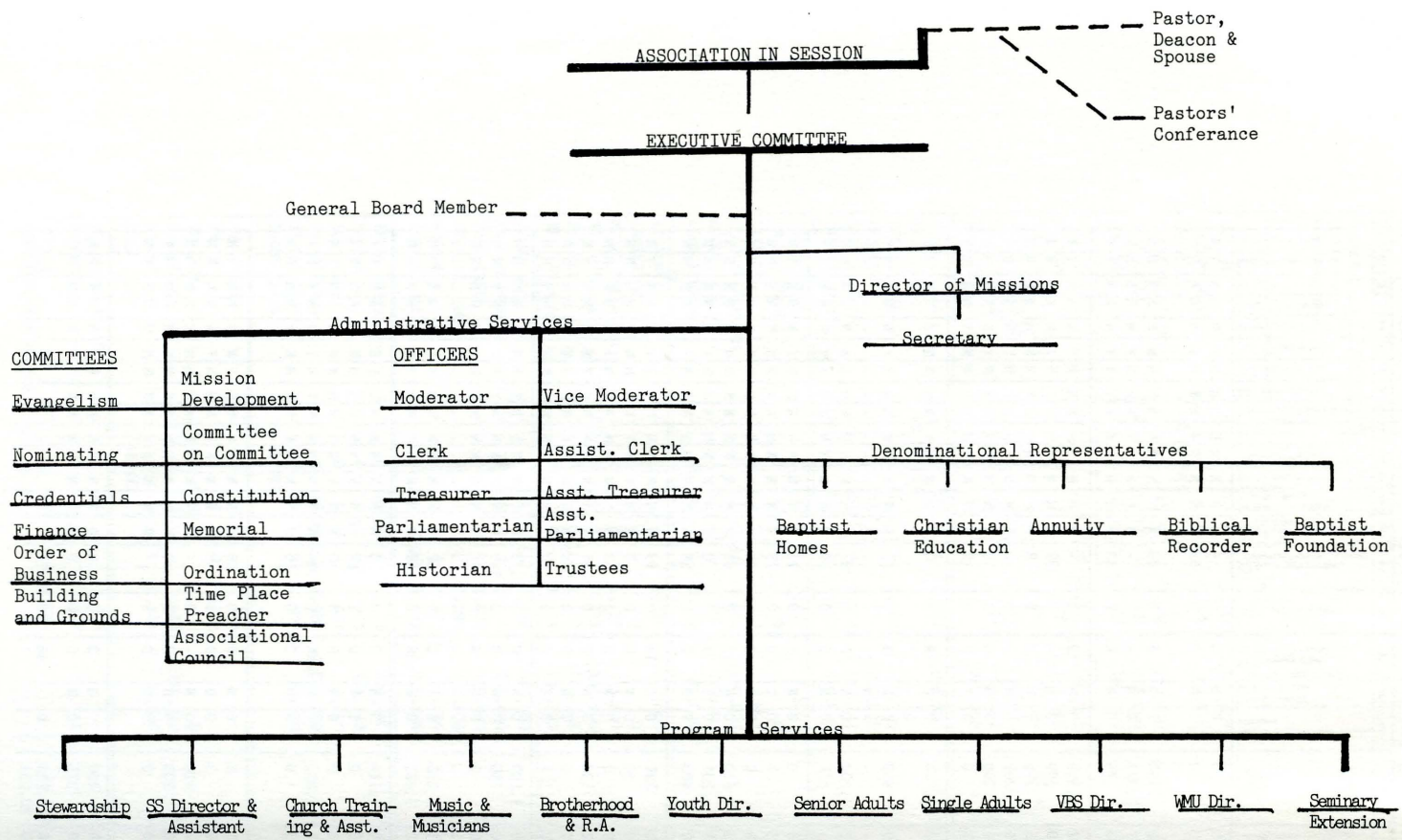
-0-

-1-

TABLE H MISSION EXPENDITURES Tuckaseegee North Carolina Assoc. Clerk: Annie K. Hoyle, P.O. Box 446, Cullowhee, NC 28723 Year Ending 6/30/89	136	137	138	139	140	141	142	143	144	145	146	147	148	149	150	
	CHURCH SPONSORED MISSIONS			Cooperative Program	OTHER MISSION CAUSE EXPENDITURES											Grand Total Mission expenditures
	Money paid out on new construction during the year	All other church sponsored mission expenditures	Total church sponsored mission expenditures		Associational missions program	State missions	SB Home Missions (incl. Annie Armstrong Easter offering)	SB Foreign Missions (incl. Lottie Moon Christmas offering)	SB Christian education (schools, etc.)	SB Children's homes (cash plus goods)	SB Hospitals	SB Homes for the aged	All other (Bible Society, Temperance League, etc.)	Total other mission cause expenditures		
CHURCHES																
BALSAM	0	0	0	0	0	100	0	100	0	0	100	100	2,000	2,400	2,400	
BALSAM GROVE	0	0	0	0	194	100	0	0	0	0	60	0	0	354	354	
BIG RIDGE	NO	REPORT														
BLACK MOUNTAIN	0	0	0	0	0	232	0	150	150	0	0	0	0	2,343	2,875	
BUFF CREEK	0	0	0	4,585	800	-	1,371	2,777	0	0	0	0	0	4,948	9,533	
CALVARY	0	0	0	1,415	200	0	75	1,000	280	275	0	0	500	2,050	3,465	
CASHIERS	0	0	0	3,500	1,000	1,400	5,599	6,765	0	1,370	141	140	17,152	33,567	37,067	
CULLOWHEE	0	4,000	4,000	2,600	1,600	500	800	3,080	0	0	0	0	36,182	42,162	44,762	
CULLOWHEE VALLEY	0	0	0	666	214	160	930	311	0	75	76	0	2,700	4,466	5,132	
DEITZ MEMORIAL	0	0	0	693	600	300	200	200	0	0	50	0	143	1,493	2,186	
DICKS CREEK	0	0	0	90	150	100	160	250	0	50	50	0	0	750	840	
EAST FORK	0	0	0	500	180	300	0	173	0	0	0	0	350	1,003	1,503	
EAST SYLVA	0	0	5,039	2,600	333	1,094	5,627	0	0	0	0	0	2,452	12,106	17,145	
FALL CLIFF	NO	REPORT														
GREENS CREEK	0	0	0	3,434	1,541	179	800	2,300	0	0	0	0	1,073	5,902	9,337	
HAMBURG	-	-	-	5,807	1,500	-	1,635	4,258	-	1,152	540	927	11,272	21,284	27,091	
HYATTS CHAPEL	0	0	0	600	0	1,000	1,000	1,423	0	0	0	46	440	3,823	4,423	
JARRETT MEMORIAL	0	0	0	480	600	325	674	1,412	0	0	0	0	0	3,011	3,491	
JOHNS CREEK	0	0	0	0	60	0	0	0	0	0	0	0	0	0	60	
LAUREL BRANCH	0	0	0	0	0	0	0	0	0	0	0	0	0	0	0	
LIBERTY	0	0	0	0	281	0	0	0	0	0	0	0	0	28	28	
LITTLE SAVANNAH	0	0	0	400	300	250	570	588	0	0	0	0	0	1,708	2,108	
LOCUST FIELD	0	0	0	111	279	100	200	201	0	200	25	25	100	1,030	1,141	
LONG BRANCH	0	0	0	0	262	0	403	370	300		191	0	1,301	2,827	2,827	
LOVEDALE	0	0	0	3,708	4,054	235	730	3,000	0	0	536	0	745	9,300	13,008	
LUMBERTON	2,331	1,110	3,441	0	3,441	0	1,951	0	0	63	44	2,058	0	0	0	
MOSES CREEK	0	0	0	70	300	0	0	300	0	150	0	0	120	870	940	
MT. PLEASANT	0	0	0	170	0	300	0	0	0	285	0	0	375	960	130	
NEW HOPE	0	0	0	309	0	0	0	4,010	0	1,823	0	0	0	5,833	6,142	
NEW SAVANNAH	0	0	0	114	114	127	120	120	0	0	0	0	0	0	0	
OCHRE HILL	0	0	0	4,087	3,963	500	1,500	3,200	0	500	500	500	0	10,591	14,678	
OLD SAVANNAH	0	0	0	156	360	0	750	1,100	0	280	325	0	220	2,935	3,091	
PINE CREEK	0	0	0	0	200	0	0	0	0	500	0	0	0	700	700	
PROMISE LAND	0	0	0	0	0	0	0	0	0	0	0	0	0	0	0	
ROCKDALE	0	0	0	0	360	0	290	291	0	0	0	0	710	1,651	1,651	
SCOTTS CREEK	0	0	0	10,863	3,557	912	1,861	3,902	0	1,101	0	0	698	12,031	22,894	
SHOAL CREEK	0	0	0	3,414	2,417	1,335	1,114	1,800	600	0	0	0	1,703	8,969	12,403	
SPEEDWELL	0	0	0	94	160	0	0	0	0	350	117	0	2,509	3,136	3,230	
SOLS CREEK	0	0	0	0	0	0	0	0	0	0	0	0	0	0	872	
SYLVA FIRST	0	11,238	11,339	27,738	5,900	2,970	2,881	9,681	0	0	0	0	7,085	28,517	67,494	
TILLEY CREEK	0	0	0	0	0	0	0	0	0	0	0	0	0	0	0	
TROUT CREEK	NO	REPORT														
TUCKASEGEE	0	0	0	360	505	0	0	221	0	0	120	0	0	846	1,206	
UNITY	0	0	0	0	0	0	0	0	0	0	0	0	0	0	0	
WEBSTER	0	0	0	1,088	660	600	416	1,577	0	0	358	0	0	3,611	4,699	
WILKESDALE	0	0	0	597	0	0	280	300	0	0	0	0	370	870	1,467	
WILMOT	0	0	0	542	50	0	0	0	0	0	0	0	0	0	50	
WOLF CREEK	NO	REPORT														
YELLOW MOUNTAIN	0	0	0	890	1,100		400	490	0	0	0	0	0	1,990	2,880	
ZION HILL	0	0	0	300	420	0	955	1,100	0	130	72	0	0	2,677	2,977	
TOTALS	2,331	16,349	23,819	80,981	37,055	13,119	32,332	27,722	3,722	8,304	13,195	3,796	90,710	383,452	291,415	
PREVIOUS YEAR TOTALS	10	437	467	82,610	33,872	13,532	23,522	45,683	1,200	6,267	15,656	1,856	24,317	159,519	256,695	

TABLE I SPECIAL INFORMATION		19	20	21	22	23	24	25	26	27	28	29	30
Tuckasegee North Carolina Year Ending 6/30/89		No. members received from non-Baptist Churches	No. members lost to non-Baptist Churches	Number of liters	Cooperative Program goal as percent of undesignated receipts	Associational missions goal as percent of undesignated receipts	Total cost for heating, cooling, lighting, etc.	Value of church property	Total church debt at end of this associational year	None F-106 F-Forward Program T-1-Trans Commem. O-Other	Budget Y/N	No. church-type missions started during the year	No. church-type missions currently operating
CHURCHES													
BALSAM	0	0	35	0	0	3,176	281,900	16,316	0	N	N	0	0
BALSAM GROVE	-	-	-	0	0	590	80,000	0	N	N	0	0	0
BIG RIDGE	NO REPORT												
BLACK MOUNTAIN	0	0	42	0	0	1,046	150,000	0	N	Y	0	0	0
BUFF CREEK	0	0	-	10	-	2,895	375,000	0	N	Y	0	0	0
CALVARY	0	0	4	10	14	831	100,000	0	N	N	0	0	0
CASHIERS	0	1	55	41	118	3,522	1,500,000	0	N	Y	0	0	0
CULLOWHEE	2	0	-	-	-	500	1,175,000	0	Y	0	0	0	0
CULLOWHEE VALLEY	0	1	3	7	3	340	60,000	56,428	N	N	0	0	0
DEITZ MEMORIAL	0	0	0	7	7	1,273	63,000	0	N	N	0	0	0
DICKS CREEK	0	0	0	0	0	774	91,200	0	0	N	0	0	0
EAST FORK	0	0	-	0	0	0	250,000	0	0	Y	0	0	0
EAST SYLVIA	1	1	75	5	1	6,657	1,046,000	0	N	Y	0	0	0
FALL CREEK	NO REPORT												
GREENS CREEK	0	0	11	5	1	1,882	152,200	0	N	Y	0	0	0
HAMBURG	2	0	50	6	-	-	265,000	0	-	-	-	-	-
HYATTS CHAPEL	0	0	15	4	0	2,947	130,572	0	N	Y	0	0	0
JARRETT MEMORIAL	0	0	20	2	3	1,591	210,000	0	N	Y	0	0	0
JOHNS CREEK	0	0	0	0	0	1,207	7,500	0	N	N	0	0	0
LAUREL BRANCH	0	0	0	0	0	0	0	0	N	N	0	0	0
LIBERTY	0	0	0	0	0	0	1,803	0	N	N	0	0	0
LITTLE SAVANNAH	1	0	22	2	15	1,041	150,000	0	0	Y	0	0	0
LOCUST FIELD	0	0	16	0	0	950	79,000	0	N	Y	0	0	0
LONG BRANCH	0	0	15	0	0	1,250	35,000	0	N	N	0	0	0
LOVEDALE	0	1	30	6	2	5,726	730,000	0	0	Y	0	0	0
LUMBERTON	0	0	0	0	0	0	0	0	N	N	0	0	0
MOSES CREEK	0	0	30	0	0	1,134	75,000	3,000	N	N	0	0	0
MT. PLEASANT	0	0	25	3	1	2,233	130,000	0	0	Y	0	0	0
NEW HOPE	0	0	UKN	0	15	2,732	365,000	0	P	N	0	0	0
NEW SAVANNAH	0	0	6	0	0	1,531	100,000	0	N	N	0	0	0
OCHRE HILL	0	0	25	65	65	4,766	475,000	0	N	Y	0	0	0
OLD SAVANNAH	0	0	12	0	0	-	250,000	0	N	Y	0	0	0
PINE CREEK	0	0	10	0	0	1,020	100,000	0	N	N	0	0	0
PROMISE LAND	0	0	7	0	0	1,000	150,000	-	-	-	-	-	-
ROCKDALE	0	0	3	0	2	979	92,000	0	N	N	0	0	0
SCOTTS CREEK	0	1	176	10	32	8,525	1,300,000	0	P	Y	0	0	0
SHOAL CREEK	0	0	26	10	4	0	330,000	0	N	N	0	0	0
SPEEDWELL	0	0	10	0	0	908	165,220	0	N	N	0	0	0
SOLS CREEK	0	0	0	0	0	687	3,000	0	N	Y	0	0	0
SYLVA FIRST	0	6	85	105	243	8,480	1,840,000	0	T	Y	0	0	0
TILLEY CREEK	0	0	15	0	0	600	65,000	0	T	Y	0	0	0
TROUT CREEK	NO REPORT												
TUCKASEGEE	2	0	0	0	0	745	-	0	N	Y	0	0	0
UNITY	0	1	4	0	0	1,178	-	0	N	0	0	0	0
WEBSTER	0	0	UKN	-	-	-	0	0	N	N	Y	0	0
WILKESDALE	0	0	10	5	0	943	125,000	0	N	N	0	0	0
WILMOT	0	0	0	0	0	2,184	84,000	0	N	N	0	0	0
WOLF CREEK	NO REPORT												
YELLOW MOUNTAIN	0	0	20	-	-	1,622	-	0	N	N	N	N	N
ZION HILL	0	0	0	0	0	1,598	0	0	N	N	0	0	0
TOTALS	8	12	857			81,063		75,744					
PREVIOUS YEAR TOTALS													

32	33	34	35	36	37	38	39	40	41	42	43	44	45	46	47	48	49	50	51	52	53	
No. New Sunday School Members	(\$) Lottie Moon offering	(\$) Annie Armstrong offering	Number of church vocational volunteers	None TV-TV T-Trans B-both	No in Sunday School but not church member	College students baptized	Number of male members	None L- Lay Religious L-Lay Evangelism B-both	None L- Leadership Y-youth B-both	Weekly Workers Meeting	Worship Planning Committee	Family Ministry	Christian Life Committees	BMT prayer activities	Bapt. Sem. Coll. Day	Prog. & casualty ins.	Literacy ministry	Capital Funds Campaign	RA-Week	Recreation Committee	State paper in budget	
Does church have:	observe	plan	use, etc. ?	Y-Yes	N-No																	
25	100	0	0	N	0	0	-	N	N	N	N	N	N	N	N	N	N	N	N	N	N	
2	0	0	0	N	0	0	53	N	N	N	N	N	N	N	N	N	N	N	N	N	N	
5	150	150	0	N	6	0	40	N	N	N	N	N	N	N	N	N	N	N	N	N	N	
-	2,777	1,371	0	N	-	2	-	N	N	N	N	N	N	N	N	N	N	N	N	N	N	
6	1,000	75	0	N	0	0	40	N	N	N	Y	Y	Y	Y	Y	N	N	N	N	Y	Y	
0	6,122	5,599	0	N	19	0	-	N	N	N	N	N	N	N	N	N	N	N	N	N	Y	Y
0	3,050	600	0	N	-	2	39	N	N	N	N	N	N	N	N	N	N	N	N	N	N	N
5	425	145	0	N	2	0	8	N	N	N	N	N	N	N	N	N	N	N	N	N	N	N
0	200	200	0	N	0	0	0	N	N	N	N	N	N	N	N	N	N	N	N	N	N	N
3	250	160	0	N	0	0	0	N	N	N	N	N	N	N	N	N	N	N	N	N	N	N
1	173	0	0	N	0	0	29	N	N	N	N	N	N	N	N	N	N	N	N	N	Y	N
1	5,000	1,094	0	0	R	9	0	262	N	N	N	N	N	N	N	N	N	N	N	N	N	N
5	2,300	800	0	N	3	0	63	N	N	N	N	N	N	N	N	N	N	N	N	N	N	N
-	-	-	-	N	-	-	-	-	-	-	-	-	-	-	-	-	-	-	-	-	-	-
1	1,423	1,000	0	N	0	0	87	N	N	N	N	N	N	N	N	N	N	N	N	N	N	N
4	674	674	0	N	5	0	59	N	N	N	N	N	N	N	N	N	N	N	N	N	N	N
15	0	0	0	N	1	0	93	N	N	N	N	N	N	N	N	N	N	N	N	N	N	N
3	0	0	0	0	0	0	25	N	N	N	N	N	N	N	N	N	N	N	N	N	N	N
0	0	0	0	0	0	1	30	N	N	Y	N	N	N	N	N	N	N	N	N	N	N	N
13	588	570	0	N	11	0	55	N	N	N	N	N	N	N	N	N	N	N	N	N	N	N
3	0	201	0	0	0	0	0	N	N	N	N	N	N	N	N	N	N	N	N	N	N	N
3	370	403	0	0	2	0	58	N	N	N	N	N	N	N	N	N	N	N	N	N	N	N
35	3,000	730	0	R	12	0	99	N	N	N	N	N	N	N	N	N	N	N	N	N	N	N
0	1,110	50	0	N	0	0	0	N	N	N	Y	N	N	N	N	N	N	N	N	N	N	N
2	300	0	0	N	0	0	23	N	N	N	N	N	N	N	N	N	N	N	N	N	N	N
0	582	500	0	N	0	0	194	N	N	N	N	N	N	N	N	N	N	N	N	N	N	N
7	4,010	0	0	0	0	0	0	UKN	N	N	N	N	N	N	N	N	N	N	N	N	N	N
4	120	127	0	N	2	0	0	0	N	N	N	N	N	N	N	N	N	N	N	N	N	N
2	3,200	1,500	0	N	0	0	173	N	L	N	N	N	N	N	N	N	N	N	N	N	N	N
0	1,100	750	0	N	0	0	159	N	N	N	N	N	N	N	N	N	N	N	N	N	N	N
2	0	0	0	N	4	0	42	N	N	N	N	N	N	N	N	N	N	N	N	N	N	N
0	-	-	-	-	-	-	-	-	-	-	-	-	-	-	-	-	-	-	-	-	-	-
0	291	290	0	N	3	0	62	N	N	N	N	N	N	N	N	N	N	N	N	N	N	N
28	3,902	1,861	0	N	26	0	251	N	N	N	N	N	N	N	N	N	N	N	N	N	N	N
0	1,800	1,114	0	N	0	0	0	N	N	N	N	N	N	N	N	N	N	N	N	N	N	N
1	0	0	0	N	0	0	62	LE	N	N	N	N	N	N	N	N	N	N	N	N	N	N
0	0	0	0	N	0																	



EDMONDS PRINTING CO. - LAWRENCEVILLE, VA