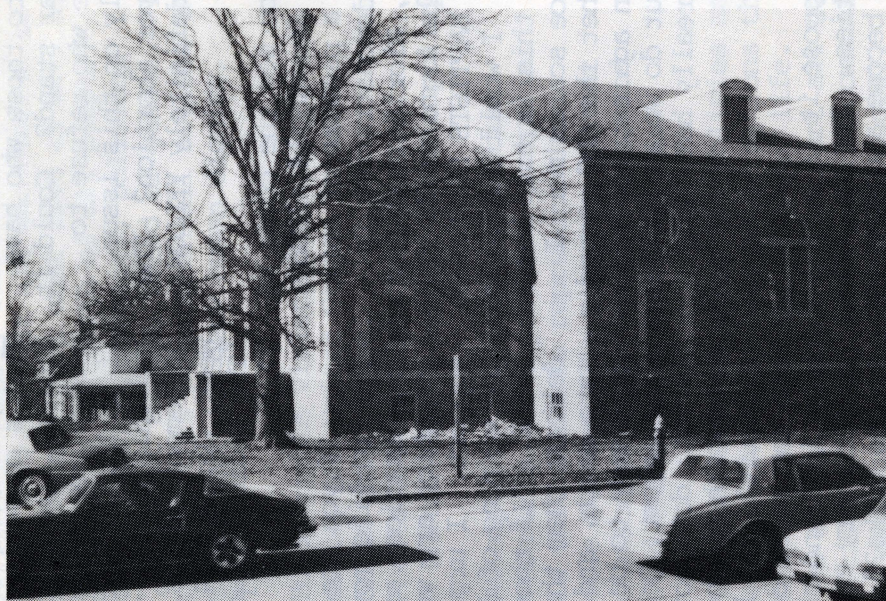


PREMIER EDITION



SOUTHEASTERN BAPTIST
FEB 28 1985
SEMINARY LIBRARY

SPRING CLEANING came early as Gore Gymnasium begins the transition to Ledford Student Center. Porches have been torn away, grading has begun, and work in the basement is underway.



Southeastern Servant

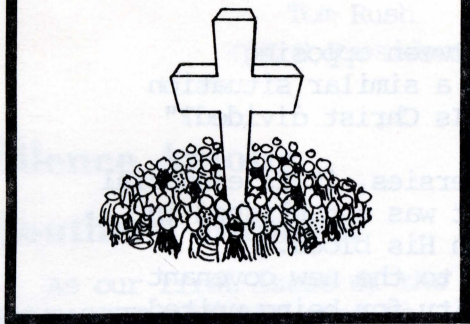
February 1985

SOUTHEASTERN SERVANT

'Where I Am, There Shall My Servant Be Also...' John 12:26

Volume 1 Number 1

February 1985



Reflections

Partners

On a brisk day in late January we had an opportunity to spend the day in a seventh grade math class at a nearby school.

Seventh grade is characterized by most teachers as one of the more difficult ages with which school teachers must deal. Some view this difficulty with understanding and appreciate the love that seventh graders are willing to give and to receive.

Many of the students that day were inquisitive as to the absence of their regular classroom teacher. They showed much concern when they learned that their teacher had the flu.

One student in the class wrote the teacher a note to wish her a speedy recovery. Relatively few of the students took the opportunity to capitalize on mischievous possibilities.

Just after lunch and as the class settled back into the day's assignment, we inquired as to why two students were talking.

"We're partners," one young lad replied. "Our teacher assigned us partners so we could help one another."

Immediately the entire class chimed in to agree with the student's proclamation. We gave our consent for the work to continue and it did, quite smoothly for the remainder of the class time.

In reflecting on that concept of "partners" it seemed to ring clearly of the partnership to which our Lord calls us in Matthew 28 and the continuing relationship in John 14.

On such bases as these, many "partner" relationships have evolved in the physical and spiritual life of the church. The Cooperative Program, the "association" of churches both locally and in convention, partnership evangelism both at home and abroad...the list of examples is endless.

The most essential of these partnerships is the one that we have as individuals with Jesus Christ as our Lord and Savior. Is Christ your "partner?"

We never learned for certain that the regular teacher had assigned partners in that math class. We are certain that when Christ calls us to love Him with all our being and to love our neighbor as ourselves, we are assigned to be partners with God and partners with our fellow creatures.

Be the very best partner that YOU can be! --BFS

Close Encounter Becomes Pivotal Point

"This place was the farthest thing from my mind 18 months ago." Everette Beaver shifted in his seat. "I was not active in church and not a committed Christian."

Everette and Irene Beaver moved to Wake Forest in August, 1984, and Everette enrolled in the associate of divinity program at Southeastern seminary. The years before had been very different ones.

In the eyes of the world Everette had become a successful businessman. He operated a thriving insurance agency in Salisbury, N. C., and became part owner of a small motel in North Myrtle Beach, S.C. Irene managed the motel while Everette ran the insurance agency in Salisbury and commuted to the beach each weekend.

Everette admits that he was a relentless drinker and smoker. "I would have gone crazy if I went into a weekend without something to drink in the house," he said.

While making the journey to the beach one weekend, Everette had an encounter with the Lord.

"All at once the Lord was with me in my car--an actual presence with a conversational dialogue. I knew it was something special but I didn't realize its significance," Everette said.

As he drove on into the night Everette struggled with what he had experienced. He finally succumbed to the bottle of vodka beneath the car seat and began to drink. By the time he reached the

motel he was drunk. He told Irene about the experience then passed out on the bed.

The next morning Irene reminded Everette of his encounter with the Lord. Everette rejected any possibility of spiritual renewal in his life.

During the coming weeks Everette mentioned the experience to some friends. He went through a time of

(con't p.3)



237 NORTH WINGOATE is home for Everette Beaver and his Pace Arrow motorhome, which is an important tool in his ministry.

REVIVAL TEAMS PLANNED

Mickey Redus

The C.E.F. of Southeastern Seminary decided last semester to make the ministry of revival a major long-term goal. Most of the members believe that the opportunity to serve in revivals would be a great way to develop as preachers while performing a needed ministry. Our hope is that we can be instrumental for the Lord in helping to turn dead and non-growing churches into growing, soul-winning churches.

To see examples of the need for revival one only has to look at the 1983 Annual of Raleigh Baptist Association and see the disparity between churches which are similar in size. For instance, Mt. Olivet Baptist Church is a mid-size church (641 present members) which led the Association in 1983 with 62 baptisms. During the same year Pullen Memorial Baptist Church, which is another mid-size church (798 present members), baptized only 3 people. At this time there were 30 members, other than the pastor, who were ordained

Southern Baptist ministers. It is truly remarkable that a Southern Baptist church which has 798 members, is debt free, has property valued at \$4 million dollars, and has 31 ordained preachers can manage to baptize only 3 people.

In addition, there were 28 other churches within the association who baptized 3 people or less during 1983, including 9 churches who baptized no one at all. It is a shame that so many preachers cannot stand on God's word which states in Psalm 126:6, "He that goeth forth and weepeth, bearing precious seed, shall doubtless [without a doubt] come again with rejoicing bringing his sheaves with him." (KJV)

We hope that you will be praying for our group as we embark upon this journey for the Lord. We also hope that you will encourage the churches which you attend to call upon us at any time. Our plans are to attempt at least one revival per month with 3 men preaching 3-day revivals (Friday, Saturday,

and Sunday.) We will also be keeping our readers up-to-date with monthly "Revival News" which will be a short monthly segment of the SOUTHEASTERN SERVANT.

If you are personally interested in being involved as a revival team member we encourage you to contact the C.E.F. for further information.

In 1984 there were more than 6,000 Southern Baptist Churches which did not baptize a single convert. As conservative, Bible-believing students, we feel we must do as much as possible to eradicate this sad statistic. We hope that as fellow students you too will want to join our effort in revival and evangelism. This is a new venture for our group and one which we are excited about.

This ministry can become the greatest ministry of Southeastern Seminary; it can become a permanent ministry in which students can grow and mature in years to come. We need your prayers and concern. God Bless You!

Editor's Viewpoint

A Call To Conservatism

The American College Dictionary defines conservatism as "the disposition (inclination) to preserve what is established; opposition to innovation or change."

In the current practice of the Christian faith, Southern Baptist style, the focus usually falls upon innovation and change within the Southern Baptist Convention.

Many issues of faith have been set on a back burner, and in some cases entirely off the stove. In their place have come the issues of inerrancy, women in ministry, and humanism, to name a few.

Some attempt to absolutize scripture and propose inerrancy as a test of faith. Some go to exhaustive lengths to combat the attitude toward women in ministry that church tradition has engraved upon the Southern Baptist Convention.

Along with the confrontation of current issues has

come a spirit of divisiveness between opposing factions. Paul was dealing with a similar situation when he asked the Corinthians, "Is Christ divided?" (1 Corinthians 1:13, RSV)

In spite of current controversies, it is essential that today's church preserve what was established in Jesus Christ, the new covenant in His blood.

Each one who stakes a claim to the new covenant must also accept the responsibility for being united--one with Christ--and not attempt to divide Christ according to personal persuasions.

Granted, the current controversies must be confronted. In that confrontation, however, the cause of Christ and the mission of His church must remain the Christain's first priority.

As we struggle to be His church, we are not called to walk through hot beds of fundamentalist fire; nor are we called to wade through the murky waters of liberalism. As Christian, each one of us is called to preserve the faith in the likeness of Christ, a call to conservatism. -BFS

Open Forum

Each issue of the SOUTHEASTERN SERVANT includes a section entitled "Open Forum" in order to provide a discussion place for issues effecting the seminary community. Anyone may suggest topics for discussion.

Suggested topics and responses to forum topics should be sent to Open Forum, SOUTHEASTERN SERVANT, P. O. Box 2138, SEBTS, Wake Forest, N.C. 27587. Responses should be limited to 50 words. The editor reserves the right to select responses for publica-

tion. Each response must be signed by its writer.

The topic presented in this issue involves the chapel hour on Wednesday of each week. Several students have suggested that because the 10 o'clock hour on Friday is so flooded with activities, the 10 o'clock hour on Wednesday might be a good time for activities to be scheduled; but what about the chapel time? The Forum asks, "Should we or should we not suspend chapel on Wednesdays in order to allow more time for student interest activities? Why?" We invite you to respond.

Group Studies Missions

Dr. Alan Neely and 30 Southeastern students spent the week of January 7-11 in Ventnor, N.J., at the Overseas Ministry Study Center. 110 Participants from almost every corner of the globe took part in the week of lectures and discussion.

The theme for the seminar was "Continuity and Change in Mission." As the week evolved the group focused discussions toward oppression in the world, especially in Latin America, South Africa, and Asia.

At the end of the week a self-appointed committee from

among the participants presented a statement to which all participants were encouraged to respond.

A number of those in attendance signed the statement in show of support for its cause. The statement is reprinted below.

The Overseas Ministry Study Center presents three weeks of seminars for seminarians each January. Traditionally, Southeastern seminary takes part in the first week of sessions each year. For more information, contact Dr. Alan Neely. Two credit hours are available for this course.

Current Events

The C.E.F. has an exciting semester of events scheduled and we invite the entire Seminary Family to take part.

The C.E.F. will meet every Friday for the remainder of the semester in the large side room in the SEBTS Cafeteria, time for these fellowships will be 10 A.M. to 10:50 A.M. (No meeting during Presidents Forum).

In March, Ted Fanning will speak. Ted is a SEBTS MDIV student. March 1st is the date for this. The 22nd of March Dr. Everett Talbert, Pastor of Riverside Baptist Church, Greer, South Carolina will address us. Dr. Talbert is a well known evangelist having preached over 300 revival services.

April will be a special month for the C.E.F. The highly respected theologian, author, and Bible teacher, Dr. Carl F. H. Henry will come to us with two challenging messages. April 26th is the date for this event. Due to Dr. Henry's popularity the C.E.F. has reserved Binkley Chapel for the 10 A.M. hour. He will be speaking on "The Crisis of Authority."

That same evening a Fellowship/Praise supper will be served in the SEBTS cafeteria at 8 P.M. Dr. Henry will speak on "The Crisis of Modern Education." Reservations are required for the supper at a cost of \$6.50 per person. (Call (919) 556-3369 for reservations.)

A CONTEMPORARY CONFESSION OF MISSION

As an international, ecumenical group of Christians we believe that all who profess to be disciples of Jesus Christ must live as well as preach the dignity and worth of all people, regardless of race, nationality, political identity, economic status, creed or gender. In accordance with this we condemn all actions that inflict social evil or deny human dignity, especially:

- Human rights violations in Latin America, and United States intervention in this region.
- Apartheid in Namibia and South Africa, and United States support of this policy.
- Attempts by rightist and leftist governments and opposition groups in Asia that claim to represent the people but actually stand in blatant violation of their human rights, and United States acceptance of this.

In the same way, we abhor all policies and practices of individuals, groups or nations that fail to respect the sanctity of human life. Further, we affirm, command and support all non-violent actions to bring about a world community of true peace and justice based on the Gospel.

Recognizing our own sinfulness and the redemptive power of Jesus Christ we strive to solidify the Mission of Christian witness to the world by professing that our belief in Jesus Christ calls us to proclaim the Gospel and practice social justice in our communities, each nation and the world.

Therefore, we recognize the invitation of God to all people to allow the Holy Spirit to transform their hearts, that they may respond faithfully by proclaiming the Gospel through word and justice within whatever arena they are called to serve.

Southeastern Servant

SOUTHEASTERN SERVANT is the official newsjournal of the Conservative Evangelical Fellowship, P.O. Box 2138, Southeastern Baptist Theological Seminary, Wake Forest, NC 27587

Published eight times annually in January, February, March, April, July, October, November, and December as authorized by the Conservative Evangelical Fellowship at its fall business meeting on December 5, 1984.

B. F. Sprouse, Jr. Editor/Business Manager

Board of Directors: Jim Baugess, Fred Hilder, Mickey Redus

President's Perspective

Tom Rush
C E F President



Silence Among Southern Baptists

As our first issue of the SOUTHEASTERN SERVANT goes to press, I cannot help but reflect on the silence of many of our Baptist leaders and pulpits on the issue of abortion. On January 22, 1973, the Supreme Court determined that an unborn child has no value as a human being. In essence, they declared the mother as the owner of the fetus (the term used for an unwanted, unborn child) and gave her the right to dispose of it in any manner she chooses. Of course, this is in direct violation of Biblical principles which teach the sanctity of life from conception. (See Psalms 139:13-16; Job 10:8-12; Eccl. 11:5; Jer. 1:5) It also violates good common sense and medical science.

Bible believing Christians know that abortion is murder. They also know abortion is a touchy issue for many in the church. In my personal experience there has been a strange silence from the Southeastern community. Dr. Delos Miles commented recently in class that silence is not always golden, sometimes it's yellow. The context of his statement was evangelism but it certainly would apply to this issue of abortion. The silence is yellow. Why do we hear little or nothing on this issue? Is there something to fear which is unknown to those who have taken a clear stand? Could it be that some who refuse to speak clearly on this issue actually favor abortion? The silence is definitely YELLOW.

Did you see the cover of *Newsweek*, January 14, 1985? It showed a picture of anti-abortion demonstrators in Pensacola, Florida. One of the visible signs read: "SOUTHERN BAPTISTS HATE BABY KILLIN'." I would sincerely hope that this is true but the silence scares me. I realize that the SBC passed a resolution against abortion in 1982 but do we as Southern Baptists really hate baby killing?

I suppose it is a matter of priorities. For me, this issue has become a number one priority. The senseless murder of millions and millions of innocent children will not be tolerated by God. It should not be tolerated by those who profess to know Jesus Christ as Lord and Savior. I have seen protests of capital punishment for a convicted murderer. I have heard the Hitler Holocaust recounted on numerous occasions. I have heard the SOUTHEASTERN SERVANT

racism issue of South Africa discussed and the horrors of the American Slavery years attacked. What about the babies being murdered right before our very eyes? Perhaps we need to change our priorities.

The *Newsweek* issue already mentioned deals with abortion in several articles. One of the problems discussed is the increasing number of live births in late abortions and the dilemma created for the doctors by this. Consider this quote: "In most cases of late abortion, physicians try to prevent such tragedies (a live birth!) by using one of the two methods that nearly always result in fetal death. One is the relatively new D & E (Dilation and Evacuation), in which the fetus is literally dis- membered by a forceps within the uterus, limb by limb, and the 'pieces' are withdrawn." (Emphasis mine.) One doctor said he has trouble getting nurses and anesthesiologists to work with him on these late abortions. One reason is that when the "pieces" are removed a nurse has to reassemble them to ensure nothing is left in the womb which could cause infection. "Researchers" (whoever they are) argue that there is not pain until late in pregnancy and "perhaps not until after birth." That's convenient but is also foolish. When you get to heaven ask an aborted child if it hurt. We must act to end this horror - God's judgement awaits. (See *News-Week*, January 14, 1985. "The Medical Quandry," page 27.)

If you are interested in the Pro-life movement several organizations are listed below which are worthy of your support. I urge you to heed the warning of Proverbs 24: 11-12. "If thou forbear to deliver them that are drawn unto death, and those that are ready to be slain; if thou sayest, Behold, we knew it not; doth not he that pondereth the heart consider it" and he that keepeth thy soul, doth he not know it? and shall not he render every man according to his works?"

Pro-Life Organizations

Southern Baptists for Life
Rudy Yakym, Executive Director
4602 York Road
South Bend, Indiana 46614
(219) 291-2881

N. C. Right to Life, Inc.
P. O. Box 9282
Greensboro, NC 27408

Close

Encounter

(from p. 1)

struggle with morals and confusing business events but he always came away refusing to change his life.

Everette awoke to a normal morning of activities on Saturday, August 20, 1983. As the morning went on he began to feel sick--a strange feeling that was unfamiliar to him.

Fortunately Everette's daughter, a nurse, was helping out at the motel that weekend. Irene called out to her and by the time she reached her father's side he was already unconscious. She immediately began to administer CPR while Irene phoned for the emergency squad.

When the medical technicians arrived they could get no response from Everette. All vital functions had ceased--death was imminent. When Everette's daughter refused to stop the CPR the technicians began to follow normal procedures and transported Everette to the hospital.

Everette recalled being carried into the emergency room and hearing a blood pressure count of "20 over 10." "Everywhere they could stick me with something, they did," said Everette.

Out of this traumatic event Everette began to understand his encounter with the Lord more clearly. "I knew when I regained consciousness that if I lived, my life would be devoted to him. I didn't

New Members Sought

The Conservative Evangelical Fellowship is a growing part of the student activities scene at Southeastern seminary. Those who are not members are encouraged to join us in the activities to experience the warm, Christian fellowship of the group.

Activities are always posted around the Southeastern campus and additional information is available from Jim Bradshaw, Vice President of the organization.

know how but I knew that's the way it would have to be.

Everette was diagnosed as having Stokes-Adams disease and was transferred from the hospital in Myrtle Beach to a hospital in Charleston, S.C.

As Everette began to regain his strength, he was counseled by Harold Mitchell, his pastor, and by Henry Finch, pastor of First Church in Charleston. "They were wise enough to know what I needed," said Everette.

Everette recalls a strong presence of the Holy Spirit in his life which seemed to magnify as he felt the prayers of members of First Church in Asheville, N.C., where his son-in-law is minister of Education.

As soon as possible, Everette enrolled in the associate of arts program at the Coastal Carolina campus of the University of South Carolina. He completed the two year program of studies in one year. He graduated on August 15, 1984, and moved to Wake Forest the next week.

The transition to seminary life was difficult. Everette and Irene left family, grandchildren and home behind to launch out on a new career. Everette says that he is grateful for the experience in Wake Forest and describes it as the "Most exciting time of my life."

At age 60, Everette is excited about ministering to senior adults in resort areas. He and Irene led a hotel-motel chaplaincy ministry at North Myrtle Beach during the summer of 1984.

The future is bright for Everette Beaver. He recently purchased a 29-foot Pace Arrow motorhome which he and Irene plan to use this summer as they travel across the United States and Canada ministering in the campgrounds. Everette and six classmates are also planning to travel to Dallas for the SBC convention in June.

Plans are in the making for the sale of Everette's "Ocean Court Resort and Villas" in North Myrtle Beach. Proceeds from the sale will go toward establishing a mission church through First Church in North Myrtle Beach. Everette and Irene look forward to working in this mission setting.

Everette Beaver is a special member of the Southeastern community--special because God is using him in a special way. We are fortunate indeed to have him among us.

Quotable Quote

"You ask me if I believe in the devil and I'll say NO! I believe in Christ. You ask me if the devil exists and I'll say YES! I've encountered him in the world."

Robert H. Culpepper
January 24, 1985

DR. CARL F. H. HENRY

The C.E.F., a student organization, is proud to announce its second annual Speaker's Forum. This year's speaker is Dr. Carl F.H. Henry, internationally known theologian and author. Dr. Henry's reputation as a Bible teacher and speaker is well known and we are very happy to have him with us for this exciting event.

Our program includes a message by Dr. Henry at 10:00 a.m. on Friday, April 26th, in Binkley Chapel on the seminary campus. His message is "The Crisis of Authority." All are welcome at this event, you'll not want to miss it.

That same evening at 7:00 p.m. a fellowship dinner will be served in the Seminary Cafeteria at a cost of \$6.50 per person. A paid reservation is required for this event as seating is limited. Dr. Henry will be speaking on "The Crisis of Modern Education."

Be sure to get your reservation in early. Just fill out the form below and return it with a check or money order to secure your place at the fellowship dinner.

RESERVATION FORM RETURN NO LATER THAN APRIL 20, 1985

NAME _____

CHURCH _____

ADDRESS _____

PHONE _____

I am sending _____ dollars to reserve _____ seat(s) at the April 26th fellowship dinner with Dr. Henry. (Make check payable to the C.E.F.) I do/do not require information on hotel accommodations. If you have any questions please call (919) 556-3369.

P. O. Box 2138
Southeastern Baptist Theological Seminary
Wake Forest, N. C. 27587