

# **TUCKASEIGEE**

**Baptist Association**

North Carolina 1970



1970

MINUTES

of the

**TUCKASEIGEE  
BAPTIST ASSOCIATION**

One Hundred Forty-First Annual Session

Held With The

TUCKASEIGEE BAPTIST CHURCH

And

BUFF CREEK BAPTIST CHURCH

August 13 - 14, 1970



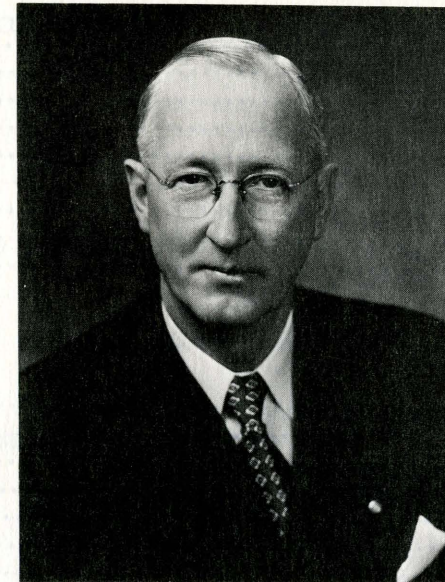
The One Hundred Forty-Second Annual Session Will  
Meet With The ZION HILL BAPTIST CHURCH And The  
CULLOWHEE BAPTIST CHURCH On  
August 12-13, 1971

Robert Blanton, Moderator  
Charles L. Dean, Clerk

## TABLE OF CONTENTS

DIRECTORY OF THE ASSOCIATION:	
Officers .....	4
Committee on Committees .....	5
CHURCH DIRECTORY .....	36
CONSTITUTION AND BY-LAWS .....	6-12
PROGRAM:	
August 13, 1970 .....	12
August 14, 1970 .....	14
PROCEEDINGS:	
August 13, 1970 .....	14
August 14, 1970 .....	16
REPORTS:	
Associational Missionary .....	17
Sunday School .....	18
Training Union .....	19
Credentials Committee .....	31
Woman's Missionary Union .....	25
Evangelism .....	26
Historian .....	29
Treasurer's Report 1970 .....	33
Budget 1970-71 .....	34
Contributions from Churches .....	34
State Missions .....	28
Home Missions .....	29
Foreign Missions .....	28
Cooperative Program .....	27
Truett Baptist Camp .....	24
Home for Aging .....	21
Baptist Hospital .....	22
Executive Committee .....	31
Annuity Board .....	20
Baptist Children's Homes .....	19
Baptist Foundation .....	20
Christian Education .....	20
Christian Literature .....	21
Time, Place and Preacher .....	31
Calendar of Activities 1970-71 .....	32
Our Beloved Dead .....	35
STATISTICAL REPORTS .....	44

## DEDICATION



Weston C. Reed

Weston C. Reed was born on April 24, 1893 in the home of J.P. Reed and Marcella Farmer Reed. He was reared in Jackson County, attended Jackson County Schools, and entered Cullowhee Normal and Industrial School after graduation from High School. He completed an A.D. Degree at Wake Forest College in 1925 with a major in Greek Language.

Mr. Reed was married to Miss Mellie Parker of Cullowhee in 1916 while attending Cullowhee Normal. They had three children Olin of Kinston, Mrs. C.C. (Mary Nell) Mason of Winston Salem and Mrs. Theodore (Marcella) Huguelet of Sylva. He became teacher-principal of a two teacher school, and later became principal of Qualla School which was consolidated during his tenure of service. Upon his graduation from Wake Forest College in 1925, he became principal of Sylva Collegiate Institute. In 1927, he moved to Cullowhee Laboratory School, and in 1930 he became principal of Sylva High School. In 1935, the Reeds moved from Jackson County to Balls Creek School near Newton, North Carolina. Mr. Reed left Balls Creek to become pastor of the Maiden Baptist Church where he stayed one year before becoming Superintendent of the Kennedy Home in Kinston. In 1950, he was named the General Superintendent of the North Carolina Baptist Children's Homes with offices at Mills Home in Thomasville. From this position, he retired in 1958. His service as interim pastor after his retirement touched the lives of members of First Baptist Church in Kinston and First Baptist Church in Sylva. On September 1, 1970, he passed to the reward of a faithful servant of God, and his body was laid to rest in the cemetery near Lovedale Baptist Church of Sylva.

His faithfulness as God's servant, his love for children and his gentle encouragement to younger ministers were among his greatest attributes.

# ASSOCIATIONAL DIRECTORY

Moderator ..... Robert Blanton  
 Vice-Moderator ..... John Hyatt  
 Clerk ..... Charles Dean  
 Treasurer ..... Barbara Vance  
 Financial Secretary ..... Robert Blanton  
 Historian ..... J.E. Brown  
 Chorister ..... Lincoln Shuler  
 Pianist ..... Mrs. Jerry Dills  
 Parliamentarian ..... Vernon Cope

## SUNDAY SCHOOL

Director ..... Judson Rotan  
 Director of Extension ..... Robert Clegg  
 Director of Outreach ..... Ralph Easterly  
 Director of Vacation Bible School ..... Mike Dillenger  
 Director of Preschool .....  
 Director of Children ..... Miss Nelda Mills  
 Director of Youth ..... Miss Junnetta Pell  
 Director of Adults ..... Guy Sutton

## TRAINING UNION

Director of Member Training ..... Joseph Reese  
 Director of New Member Training ..... Lloyd Fish Jr.  
 Director of Church Leadership ..... Charles Dean

## WOMAN'S MISSIONARY UNION

President ..... Mrs. Judson Rotan

## ASSOCIATIONAL DEACONS

President ..... Clyde Vance

## ASSOCIATIONAL MISSIONARY

Walter Middleton

Address:  
 Box 266  
 Sylva, 28779

Office:  
 Scotts Creek Baptist Church  
 Phone: 586-4111

# COMMITTEE ON COMMITTEES REPORT

## COMMITTEE ON COMMITTEES:

Everett Wilson  
 Glenn Blanton  
 Robert Parris  
 Judson Rotan  
 Vice Moderator

## TIME, PLACE AND PREACHER

Moderator  
 Wayne Caldwell  
 Delos Hoyle  
 Missionary

## CREDENTIALS COMMITTEE

Joseph Reese  
 William Sorrells  
 Marshall Clayton  
 James Potts  
 Hardin Nicholson

## LONG RANGE PLANNING

Moderator  
 Missionary  
 Robert Clegg  
 Ralph Easterly  
 Lloyd Cowan

## ORDER OF BUSINESS

Vice Moderator  
 J.E. Brown  
 Raymond Shuler  
 Lyle Hall

## MISSION COMMITTEE

Sunday School Director  
 Church Training Director  
 W.M.U. Director  
 Deacon President of Association  
 Chairman of Evangelism  
 Moderator  
 Treasurer

Bobby Joe Jacobs - one year  
 Conrad Burrell - two years  
 Wade Mills - three years  
 Morrison Green - four years

## NOMINATING COMMITTEE

Lloyd Fish Jr.  
 Charles Dean  
 J.C. Robinson  
 Tim Norman  
 Frank Reed

## FINANCE COMMITTEE

Robert Blanton  
 Guy Sutton  
 Ray McCall  
 Bill Shuler

## CALENDAR OF ACTIVITIES

Moderator  
 Clerk  
 Missionary  
 S.S. Director  
 Church Training Director  
 W.M.U. Director  
 President of Deacons

## RESOLUTIONS COMMITTEE

Michael Dillenger  
 Ben Cook  
 W.E. Haskett  
 Wessley Hooper

## ORGANIZATION AND ACCEPTANCE OF NEW CHURCHES

Moderator  
 Pastors

Prayerfully Submitted,  
 Everett Wilson

# CONSTITUTION

(Revised August 16, 1957)

## ARTICLE I

The Name of this body shall be the Tuckasegee Baptist Association

## ARTICLE II

The purpose of the Association shall be the extension of Christ's kingdom on earth, creation and promotion of harmony, intelligence and spiritual power of the churches.

## ARTICLE III

(1) The Association shall have the power to elect and install its officers in whatever manner the body may deem expedient. (2) It shall have power to recommend measures of usefulness and guidance to our churches in matters of organizations, ordinations and questions of doctrines and discipline. (3) The Association shall have no power to infringe upon the right to the local churches as sovereign and independent bodies.

## ARTICLE IV

(1) The Association shall be composed of ministers and messengers selected by missionary Baptist churches which have been previously received into the association. (2) The pastor and four members from each one hundred members or fraction thereof shall compose the representation of each church. (3) The association shall be the sole judge of its members. (4) Any church applying to the association for membership by letter and messenger shall come under the watchcare of the association for one year for observation. At the expiration of that time, if it is still the will of the church, it may be voted in by majority vote of the association, provided they have an acceptable letter and at least one messenger present at the time.

## ARTICLE V

(1) The association shall hold its regular session on Thursday and Friday preceding the 3rd Sunday in August. (2) The association year begins on July 1 and continues through June 30 of the proceeding year. The associational reports and church letters will be within this period. (3) The Moderator may call a mid-year session at his pleasure.

## ARTICLE VI

(a) The officers of the association shall be a Moderator, Vice Moderator, Clerk, Assistant Clerk, Treasurer, Historian, Sunday School Superintendent, Training Union Director, Woman's Missionary Union Superintendent, Superintendent of Evangelism, President of Deacon's organization, Brotherhood President, Superintendent of Education, and a Parliamentarian, and such other officers as the association may desire to elect.

(b) The term of office for the general officers of the Association shall not exceed two years in succession, with the exception of the Clerk and Treasurer of the association, who may be re-elected to succeed themselves in office at the pleasure of the Association. The term of office for all members of committees of the Association shall be for not more than two years. No committee member may succeed himself until at least one year has elapsed after his official term has expired. No member of the Association may be permitted to hold membership in more than one committee during one year, except in the case of the members of the Executive Committee. (c) The term general officers shall apply to the Moderator, Vice Moderator, Clerk, Assistant Clerk and Treasurer.

## ARTICLE VII

(a) The moderator shall preside and maintain the order of business of all meetings unless he otherwise provides for the Vice Moderator. He shall serve as ex-officio member of all committees of the Association. (b) He shall appoint the committee on committees and all other committees pertinent to the operation of the body not named by the committee on committees in its regular report. (c) The Vice Moderator shall assist the Moderator and in case of absence or incapacitation of the Moderator, he shall act in his stead until another Moderator is elected. (d) The Clerk shall keep a complete and accurate record of all transactions; he shall prepare a book of reports to be distributed to messengers and pastors at the beginning of each day's session of the annual meeting; and he shall cause to be printed a minute concerning the records made. (e) The Clerk shall mail to the Clerk of each church in the association, blanks for the preparation of the church letter as soon as they are received from the state convention office. (f) The Treasurer shall receive and disburse by the order of the Executive Committee or the association while in session, the money of the treasury and make a complete report to the association at each session. (g) It shall be the duty of the Historian to keep the records of the association up to date. (h) The Associational Missionary shall be sought and recommended by the Executive Committee in a manner of its own choosing.

Within 30 days after locating such a person the Executive Committee shall present the name of the missionary nominee to a called meeting of the Association. If the Annual meeting of the Association is scheduled within 60 days, the presentation shall wait until that time.

His call shall be indefinite. His salary, allowances, etc., shall be as provided by the current budget or adjustments recommended in consultation with the Finance Committee.

Two-week vacation may be taken at his discretion.

Concerning termination of employment, his resignations shall be in writing and presented to the Executive Committee at least thirty days before it is to take effect. The Executive Committee may terminate employment by giving thirty days notice in advance.

The Missions Committee shall give full supervision and guidance to the Missionary in planning, promoting and financing his work.

The Missionary shall work closely with the associational committees and associational officers in such a way as to help each group determine its opportunities, and objectives based on the need in the churches and procedures, and means of fulfilling these.

Therefore, he shall serve as ex-officio member of all committees of the Association. It shall be his duty to administer the policies and instructions of the

Executive Committee. He shall communicate with the State and Southern Convention such information as shall be mutually helpful and needful.

#### ARTICLE VIII

All officers shall be elected annually at the discretion of the body. All officers and committee members will hold office until the next annual association meeting.

#### ARTICLE IX

The business of the association shall be conducted according to Roberts Parliamentary Practice or in a manner not contrary thereto.

#### ARTICLE X

The Executive Committee shall be composed of the Moderator, Vice Moderator, Clerk, Treasurer, Historian, Sunday School Superintendent, Superintendent of Evangelism, President of the Deacon's Organization, President of the Brotherhood, Superintendent of Education, Associational Missionary, Parliamentarian and the pastor and one member from each church in the association. No pastor, by virtue of his being an Associational officer, shall be disqualified as a member of the Promotion Committee, from representing the church or churches he may be serving in the Association. Twelve of these members shall constitute a quorum.

#### ARTICLE XI

It shall be the duty of the promotion committee to act for the association on matters arising when the association is not in session and to make a report of all work to the next session of the association.

#### ARTICLE XII

The associational quorum shall be the number present if the number satisfies the will of the Moderator.

#### ARTICLE XIII

The association shall have the right to withdraw by a majority vote fellowship from any church which becomes unorthodox in doctrine, or disorderly in practice, or that fails to present itself either by messenger or letter for two consecutive sessions without sufficient reason, or that ceases to be missionary in practice. The support of the causes fostered by the denomination at large and of this association in particular shall be the test of each church as a missionary body. Any church, at its pleasure, may withdraw from the association.

#### ARTICLE XIV

The association shall have such standing committees as may be considered necessary to promote efficiently the work of the Master in our midst, the members of these committees are to be nominated annually by the committee on committees unless otherwise determined by the association.

#### ARTICLE XV

This constitution shall be amended by a majority vote, providing the amendment was read on the previous day of the association. Otherwise two-thirds majority of the votes must be in favor of the amendment.

### BY-LAWS

1. All vacancies occurring among the elective officers and in the Executive Committee shall be filled by the Promotion Committee.

2. The Executive Committee shall meet at a time and place designated by the Moderator on Monday following the first Sunday of each quarter. The Executive Committee shall elect its own chairman.

3. Each church Clerk shall mail to the Clerk of the association a letter properly filled out on the blank furnished him at least two weeks prior to the meeting of the body.

4. No church shall be received into the association who does not present a certificate of examination properly endorsed by the committee on organization and reception of new churches.

5. Duties of the committees of the association.

A. Order of Business Committee: This committee shall plan the annual program for the association and present it to the Executive Committee at its July meeting.

B. Committee on Committees: The duty of this committee is to bring to the annual associational meeting a nomination of the personnel of the standing committees.

C. Finance Committee: This committee shall devise plans for raising the funds for the association budget and prepare for recommendations to the annual session of the association the budget for the disbursement of funds for the coming year.

D. Resolutions Committee: This committee is to report suitable resolutions at the annual associational meeting.

E. Credentials Committee: This committee serves in an advisory capacity only. This committee should examine such candidates for the ministry as come before it as to their call and fitness for the Gospel Ministry and make recommendations as they feel led to the church of which one is a member about his being ordained and help plan and arrange the proper services of ordination when such assistance is needed. The Executive Committee should be informed regularly of the work of the committee. Each church desiring to ordain a candidate is urged to consult with the committee.

F. Nominating Committee: It shall be the duty of this committee to nominate the officers of the Association and have this report ready for the annual associational meeting.

G. Missions Committee: (1) This committee shall be composed of the following Association officers: Sunday School Superintendent, Training Union Director, Woman's Missionary Union President, Brotherhood President, Chairman of Evangelism, Chairman of Associational Deacons, Treasurer, Moderator, and Chairman of Executive Committee, and four members at

large from member churches to be elected by the association at its annual meeting for 1,2,3, and 4 years respectively on a rotating system. After the election one new member shall be elected each year to serve for a period of four years. (2) The Missions Committee shall advise and work with the Associational Missionary in promoting the work in the Association, and also lead and assist in organizing new churches, and also shall be responsible for encouraging and guiding the churches in the association to faithfully cooperate with the association program and emphases.

(3) The committee shall meet once a quarter to receive a written report from the Associational Missionary and make helpful suggestions to him concerning his work. (4) If such advice is sought, it shall advise any group seeking to organize a new church, or seek to help any member church desiring assistance in its problems. (5) The Missions Committee shall perform the duties prescribed in the By-Laws on New Churches, and the By-Laws prescribing the job Description on the Associational Missionary.

JOB DESCRIPTION  
ASSOCIATIONAL MISSIONARY  
TUCKASEEGEE BAPTIST ASSOCIATION

This Job Description is prepared for the information of the Associational Missionary, with the objective of presenting the Missionary Committees' viewpoints on the major needs of the Association. The Job Description also stipulates the responsibilities of the Association to the Missionary.

I. Function of the Associational Missionary. He is to be the chief administrative officer of the Association. He is to confine extra employment in a manner agreed upon with the Executive Committee.

II. Relationship of the Missionary:

1. He is employed by the Executive Committee of the Association. "Concerning termination of employment, his resignation shall be in writing and be presented to the Executive Committee at least thirty days prior to its effectiveness. The Executive Committee may terminate employment by giving thirty days notice in advance." (Tuckasegee Association Constitution, Article VII, Paragraph 4)
2. General supervision of the personnel and program of the Association as they function through the Associational Office.
3. Work primarily with associational General Officers, Committees, and Organizations.
4. Work closely with auxiliary organizations.
5. Lead in maintaining relationships with State and SBC Agencies.

III. Duties of the Missionary:

1. Administrative
  - a. Administer policies and instructions committed to him by the Association, its Executive Committee or Board.
  - b. Work closely with the Associational Officers, Committees, and Organizations to help each group determine (1) its opportunities and objectives based on needs in the churches, and (2) its procedures and programs for achieving these objectives.
  - c. Help the Association to develop annual and long-range objectives; set

goals, and make plans for their attainment.

- d. Correlate the work of all organizations and Committees in the Association, and publish a Calendar of Activities.
  - e. All staff to be responsible to the Missionary selection and supervision under his responsibilities until informed otherwise by the Executive Committee.
  - f. Serve as ex-officio member of all committees.
  - g. Have general oversight of purchasing equipment and supplies within the approved budget.
  - h. Inform State and Southern Convention agencies of needs, problems, and potentialities within the Association.
  - i. Interpret to the churches the program resources and other assistance available from the State and Southern Baptist agencies.
2. As Counselor-Shepherd  
To counsel with church leaders as requested with reference to (1) Programs and procedures in their churches; (2) Calling a pastor or other staff member; (3) Actual or threatened breach of fellowship; (4) Church objectives; (5) Church policies; (6) Assist pastorless churches; (7) Assist pastors and others in counseling those who are called into church-related vocations.
3. In the Churches, extending the local ministries:
- a. To visit churches by invitation of the pastor or other church leaders in the pastorless churches to provide assistance in the church program and ministry, such as: (1) Pulpit supply; (2) Study course; (3) Missionary address; (4) Deacons' Meetings; (5) Assembly programs; (6) Special day addresses; (7) Ordination services; (8) V.B.S. Planning and Promotion; (9) To interpret phases of Associational work; (10) Budget planning; (11) Building planning; (12) Revival meetings; (13) Stewardship emphasis; (14) Study objectives and long-range planning; (15) Studying and evaluating procedures, curriculum, Constitution and By-Laws, etc., (16) Church-Community Surveys, etc.; (17) Promoting a world missions concept; and (18) publishing of a regular news medium.
4. In the Associational Office:
- a. Personal correspondence, promotional mail, and telephoning pertinent to his work.
  - b. Office conferences, answer to inquiries, etc.
  - c. Assist Associational Officers, Committees, and heads of Organizations to get out promotional mail pertinent to their work.
- IV. The Schedule of Benefits Provided by the Association for the Missionary.
1. His salary shall be \_\_\_\_\_.
  2. His fringe benefits shall include:
  3. His schedule shall include:
    - a. One day each week, chosen at his discretion, shall be reserved for rest that excludes normal Associational activities.
    - b. A maximum of six weeks each year outside of the Association for special work with local churches or with State and SBC agencies.
    - c. An annual sick leave of 14 days maximum, with a maximum of 42 days to be accumulated. Sick leave may be advanced by the Association for one year, without Executive Committee action. Sick leave is to be recorded with the Financial Secretary of the Association.
  4. All honoraria from churches inside or outside the Association and all hono-

raria from other religious work shall be his personal affair, and shall not be submitted to the Association.

- H. New Churches in the Association: (1) Any church seeking admission to the membership of the Association shall petition in writing the Promotion Committee at least three months before the annual meeting of the Association, which petition shall be referred to the Missions Committee for its study on the petitioning church's covenant, articles of faith, history, practices, cooperative spirit, its relations to other churches of the association and its willingness to abide by the Constitution and By-Laws of the Association. The Missions Committee shall then report to the Associational Meeting with a copy thereof submitted to the Associational Promotion Committee at least thirty days prior to the Annual Meeting of the Association, its findings and recommendations for Associational action at the next annual meeting. (2) Each church applying for membership in the Association, upon approval, shall be received under the watch-care of the Association for a period of one year. Each church shall give a written report to the missions committee and the Executive Committee each quarter of their work and giving toward associational program and state and south-wide participation.
6. The Clerk shall prepare a Book of Reports for distribution at the annual sessions containing the reports of those on the Committee on Reports. The Clerk shall notify each person to give a report, and these reports should be in the hands of the Clerk no later than two weeks before the Association meets.

## PROGRAM

### ORDER OF BUSINESS TUCKASEEGEE BAPTIST ASSOCIATION AUGUST 13 & 14, 1970

THEME: "LIVING THE SPIRIT OF CHRIST IN OPENNESS AND FREEDOM"

THURSDAY, AUGUST 13, Morning

Tuckaseegee Baptist Church  
A. Judson Rotan, Moderator  
Robert Blanton, Vice Moderator  
Charles Dean, Clerk

- 9:30 Worship - Hymn  
Scripture and Prayer ..... Ralph Easterly
- 9:45 Organization of the Association Meeting  
Order of Business Committee

#### OPENNESS AND FREEDOM IN THE ASSOCIATION

- 9:55 Report of Associational Missionary ..... Walter Middleton  
10:10 Report of Sunday School

- 10:15 Report of Training Union ..... Everette Wilson  
10:20 Report of W.M.U. .... Mrs. Robert Clegg  
10:25 Report of Associational Deacons ..... Clyde Vance  
10:30 Report of Historian ..... J.E. Brown  
10:35 Report of Treasurer ..... Mrs. Clyde Vance  
10:40 Report of Finance Committee ..... Robert Blanton  
10:45 Hymn and Offering  
10:50 Recognition of Visitors  
Recognition of New Pastors ..... Walter Middleton

#### OPENNESS AND FREEDOM THROUGH SOCIAL SERVICES

- 11:00 Report of Home for Aging ..... Mrs. Dot England  
11:10 Report of Baptist Hospital ..... J.D. Parker  
11:20 Report of Baptist Children's Homes ..... Tom Clayton  
11:30 Report of Truett Camp ..... Jesse Bailey  
11:40 Report of Hospital Chaplaincy ..... Paul A. Barker

#### OPENNESS AND FREEDOM THROUGH WORSHIP

- 11:45 Hymn and Scripture  
Special Music  
Annual Sermon ..... Bill Sorrells  
12:15 Benediction ..... Lester Sutton

THURSDAY, AUGUST 13, Afternoon

- 1:15 Worship - Hymn  
Scripture and Prayer ..... Mike Dellington  
1:25 Miscellaneous Business

#### OPENNESS AND FREEDOM WITH OTHERS

- 1:35 Report on Evangelism ..... Ralph Easterly  
1:45 Report on Baptist Foundation ..... Gordon Maddery  
1:50 Report on Christian Literature ..... Mrs. Mary Bennett  
1:55 Report on Annuity Board ..... Joseph Reese  
2:00 Report on Christian Education ..... Robert Clegg  
2:05 Representatives of Baptist Colleges  
2:15 Hymn

#### OPENNESS AND FREEDOM THROUGH MISSIONS

- 2:20 Report of the Cooperative Program ..... Joseph Reese  
2:25 Report of State Missions ..... Frank Reed  
2:30 Report of Home Missions ..... Ray McCall  
2:35 Report of Foreign Missions ..... Mrs. Hattie Hilda Allison  
2:40 Message by Baptist State Convention Representative  
3:10 Benediction ..... J.C. Robinson



FRIDAY, AUGUST 14, BUFF CREEK BAPTIST CHURCH

5:00 Worship - Hymn  
Scripture and Prayer ..... Lloyd Fish

OPENNESS AND FREEDOM IN OUR WORK

5:10 Report of Executive Committee ..... Charles Dean  
5:20 Report of Credentials Committee ..... Joseph Reese  
Report of Time, Place, and Preacher Committee  
Report of Committee on Committees .....Everette Wilson  
5:30 Miscellaneous Business  
5:35 Hymn  
5:40 Report of Nominating Committee ..... Lloyd Fish  
5:50 Report of Calendar of Activities, 1970-71 ..... Robert Blanton  
6:00 Moderator's Message ..... Judson Rotan  
6:15 Memorial Service ..... Ben Cook  
6:20 Benediction ..... Hardin Nickolson

SUPPER

7:30 P.M.  
Worship: Hymn  
Prayer  
Hymn  
Testimony  
Special Music ..... Buff Creek Youth Choir  
Doctrinal Sermon ..... Ben Cook  
8:45 Benediction ..... Judson Rotan

PROCEEDINGS

TUCKASEIGEE BAPTIST ASSOCIATION  
TUCKASEIGEE BAPTIST CHURCH  
THURSDAY, AUGUST 13, 1970

1. The annual session of the Tuckaseegee Baptist Association began with the singing of the hymn "Stand Up, Stand Up For Jesus".
2. The Reverend Ralph Easterly gave a welcome to the messengers and visitors. He read the Scripture lesson from Galatians 5:13-26 and led in prayer.
3. The one hundred forty first annual session of the Tuckaseegee Baptist Association was then called into order by the Moderator the Reverend Judson Rotan. He gave a welcome to all messengers and visitors to the meeting. A motion was then made that the messengers present constitute the Association. The motion was adopted. The Moderator presented the Order of Business. A motion was made that the Order of Business be followed. The motion was adopted.
4. The Reverend Walter Middleton gave the report of the Associational Mission-

ary emphasizing the needs of the coming Associational year. The report was adopted.  
5. The report of the Sunday School was presented by the Moderator. The report was adopted. The Reverend Walter Middleton then spoke to the report.

6. The report of the Training Union was presented by the Reverend Everett Wilson. The report was adopted. The Moderator called the Association's attention to the Digest of Letters and the total yearly statistics.

7. The report of the W.M.U. was held until later in the session.

8. The Historian's report was given by the Reverend J.E. Brown. He made a request for any material that any individual might have relative to the history of the Tuckaseegee Association. The report was adopted.

9. The Reverend Robert Blanton gave the Treasurer's report. The Moderator spoke to the report and called attention to the contributions from the churches. The report was adopted. Reverend Blanton then presented the Proposed Associational Budget for 1970-71. The budget was adopted.

10. A hymn, "Tis So Sweet To Trust In Jesus", was sung and a offering was received.

11. The Moderator recognized the visitors. The Clerk made the Roll Call of Churches. The Associational Missionary recognized the new pastors. The pastors recognized were the Reverend Cecil Saunders of Balsam and the Reverend Frank Reed of Shoal Creek.

12. The Moderator presented the W.M.U. report. The report was adopted.

13. The Reverend Robert Bruhn spoke on behalf of the Annuity and Baptist Foundation. He emphasized the work of our Cooperative Program.

14. The Reverend Bill Poole spoke on behalf of the Home For The Aging. The Moderator presented the report for the Home For The Aging. The report was adopted.

15. Mr. J.D. Parker presented the report on the Baptist Hospital. The report was adopted and Mr. Parker spoke to the report.

16. Dr. W.K. McGee was recognized and spoke on behalf of Baptist Hospital.

17. Mr. Hugh Starnes spoke on behalf of the Children's Homes. The report was adopted.

18. The Reverend Jesse Baily spoke on behalf of Truett Camp. The report was adopted.

19. The Reverend Paul Barker, C.J. Harris Hospital Chaplain, spoke on his ministry at the hospital. The report was adopted.

20. A hymn, "Trust and Obey", was sung.

21. The Reverend Robert Parris, alternate to the Reverend Bill Sorrells, brought the Annual Sermon. The Reverend Joseph Reece led in prayer, and then Brother Parris spoke from Psalm 85 on the subject of Revival.

22. The Reverend Lester Sutton closed the morning session with prayer.

LUNCH

23. The afternoon session began by the singing of a hymn, "What A Friend We Have In Jesus". The Reverend Everett Wilson read from James 3:17-18 and led in prayer.

24. A Miscellaneous Business period followed. The Moderator announced a Pastor's Retreat at Truett Camp on September 3-5. The Reverend Ralph Easterly made a motion that the Associational Meeting time be changed to a Thursday evening meeting with strong emphasis on lay leadership and be continued the next day Friday

morning and afternoon with business and reports. The Reverend Joe Reece amended the motion to begin in the afternoon of Thursday with business. The amendment was adopted. The motion with the amendment was adopted. The Reverend Lloyd Fish recognized the Reverend J.E. Brown who has attended twenty years without missing an Associational meeting. The Reverend Robert Blanton recognized Brother Troy Rogers who also has not missed a meeting.

25. The Reverend Ralph Easterly gave the Evangelism Report. The report was adopted. Brother Easterly made a recommendation that an Evangelism Committee be formed. And that it be composed of the Chairman of Evangelism, Sunday School Director, Church Training Director, W.M.U. Director, Chairman of the Associational Deacons and two lay members from the association to be elected by the Committee on Committees each year. A motion was made and seconded and the recommendation was adopted.

26. The Annuity Report was presented by the Reverend Joseph Reece. The report was adopted.

27. The Reverend Robert Clegg gave the Christian Education report with the understanding that some figures in the report needed to be revised. The report was adopted.

28. Mr. Bob Abrams spoke on behalf of Gardner-Webb College.

29. Mr. Robert Melvin spoke on behalf of Mars Hill College.

30. The Reverend Joseph Reece gave the Cooperative Program report. The report was adopted.

31. The Reverend Walter Middleton gave the State Missions report in the absence of Reverend Frank Reed. The report was adopted.

32. The Reverend Ray McCall presented the report on Home Missions and spoke to the report. The report was adopted.

33. Mrs. Hattie Allison presented the report on Foreign Missions. The report was adopted.

34. The Moderator recognized the Reverend Charles Bullock, pastor of the First Baptist Church of Mocksville, N.C., who spoke on "A Forgotten Song" emphasizing missions.

35. After the message the Reverend Robert Blanton expressed appreciation to the Tuckaseegee Baptist Church for their hospitality extended during this meeting.

36. The Association was adjourned with prayer led by the Reverend J.C. Robison.

#### BUFF CREEK BAPTIST CHURCH FRIDAY, AUGUST 14, 1970

1. The Association was called to order by the Moderator with the singing of a hymn "The Solid Rock".

2. The Reverend Lloyd Fish, pastor of Buff Creek, gave a welcome to the messengers and visitors, and read John 21 and led in prayer.

3. The Reverend Charles Dean gave the Executive Committee report. The report was adopted.

4. The Reverend Joseph Reece presented the Credentials Committee report. The Report was adopted.

5. The Reverend Walter Middleton, in the absence of Jesse Baily, presented the report on Time, Place and Preacher. The report was adopted.

6. The Moderator presented the Committee on Committees Report, in the absence of Everett Wilson. The report was adopted.

7. A Miscellaneous Business period followed. The Moderator appointed a Committee for study of the Constitution and By-Laws. Robert Clegg, Chairman, J.C. Robinson, Ernest Penland, John Hyatt and Kent Coward. Churches were recognized who were not present for the Thursday session. Long Branch was recognized. The Moderator called attention that 28 out of 48 churches had been present for the meeting.

8. The Christian Literature report was presented by the Moderator. The report was adopted. The editor of the state paper Biblical Recorder, Marse Grant, spoke to the report emphasizing the need of awareness in Baptist life today of what is going on in the world.

9. A hymn, "At The Cross", was sung.

10. The Reverend Lloyd Fish gave the Nominating Committee report. There were no further nominations and the report was adopted.

11. The Reverend Robert Blanton presented the Calendar of Activities. An amendment was made by Robert Clegg to move M Night to December 7 so as not to conflict with the W.M.U. Week of Prayer. The amendment was adopted. The report was adopted.

12. The Associational Missionary discussed the need of a Pastor's Conference and requested a committee to study when this could be carried out. The Moderator appointed such a committee consisting of Hardin Nicholson, Ralph Easterly, Frank Reed, Joseph Reece, and Raymond Shuler.

13. The Moderator brought his message. He spoke from Psalm 95 emphasizing the need of worship and celebration to God and the need of action in service to God.

14. The Reverend Ben Cook conducted the Memorial Service for Our Beloved Dead, and the Reverend Hardin Nicholson led in prayer.

15. The session was closed with prayer led by the Reverend Frank Reese.

#### SUPPER

16. The session was resumed by the Moderator making and calling for any announcements.

17. New pastors to the Association were recognized. Tim Norman at New Savannah, Frank Reese at Wilksdale, Jack Holcombe at New Hope, Marvin Adams at Greens Creek, Wesley Hooper at Speedwell and Cecil Saunders at Balsam. 11 Deacons, 1 Sunday School Superintendent and 19 pastors were recognized at this session.

18. A hymn was sung "Standing On The Promises".

19. The Association was led in prayer by the Reverend Robert Clegg.

20. The Moderator led the Association in reading a Responsive Reading "Christ Saving", and "Christ Commanding".

21. A Testimony period followed with many telling of the goodness of God to their lives.

22. Special music was then presented by the Buff Creek Youth Choir.

23. The Reverend Ben Cook brought the Doctrinal Message.

24. The Annual Association meeting of the Tuckaseegee Baptist Association was adjourned by a benediction from the Moderator.

#### ASSOCIATIONAL MISSIONARY

My intentions are not to define Associational Missions but to simply present some needs and try to challenge you into second-mile territory as we attempt to meet

those needs.

1. The need to strengthen the fellowship among our Churches and find ways of recognizing and expressing our unity in Christ.

2. The need to find ways and means of giving a UNITED BAPTIST MINISTRY and WITNESS to the thousands of unreached people in our area.

(a) Youth needs are of primary importance.

(b) There are pockets of people all over the association who will never be reached through our usual church channels. I believe our Savior would have us join hands to reach them.

3. The need to assist Churches to develop THEIR OWN LEADERSHIP and PROGRAMS in accordance with THEIR OWN INDIVIDUAL NEEDS.

4. If we attempt the ambitious program that our country needs and deserves, we must have more and better co-operation and understanding. We must have increased financial support and willingness in all good faith to attempt great things for our God.

Toward a progressive spiritual advance for this Association, I would dare make a few suggestions.

1. That each Church become more aware that it is the Missionary Body of Christ.

2. That the Pastors be allowed to once again be God's Prophets and Evangelists of God's Good News to His People.

3. That each body of believers vote to take a positive stand against the social evils of this day as opportunities make it possible.

What we have been doing might be good, but it hasn't been nearly enough. I challenge you to mould the changes that are so rapidly taking place into a new era for Jesus Christ.

Prayerfully submitted,  
Walter Middleton  
Supt. of Missions

## SUNDAY SCHOOL

Since 1891 the Sunday School Board has sought to aid churches in winning people to Christ, and educating them in the faith. This continues to be the emphasis through the 25 programs of work assigned to the board by the Southern Baptist Convention.

The board stands ready to answer the call to individual and collective needs whether by service through Baptist Book Stores, or through Sunday School quarterlies for Junior boys all over the country or through direct consultant service to the local church.

Consultants and editors strive daily to supply requested study materials and planning services through education and service programs. Assistance is available to churches and individuals in the areas of literature, books, music, supplies, films, Sunday School, Vacation Bible School, Bible study, Training Union, Church Music, church administration, audiovisual education, student work, family ministry, vocational guidance, Bible and tract distribution, church architecture, church library and church recreation.

Glorieta (N.M.) and Ridgecrest (N.C.) Baptist Assemblies, operated by the board, are used each summer for conferences, youth activities, mission studies and leadership training sessions. Both assemblies are available during winter months for church

and campus groups. Additionally, at the Sunday School Board and in local churches, seminars, conferences and clinics are held throughout the year for many church program areas. Through every means Southern Baptist churches are seeking more efficient, effective means to spread the gospel and to glorify God. It is the goal of Sunday School Board personnel to work jointly with the churches as servants of God.

Respectfully submitted,  
Sunday School Board  
Nashville, Tennessee

## TRAINING UNION

"M" Night was held at the First Baptist Church with the Rev. Joe Stacker, from Greenville, Tenn. as guest speaker. There was a very good attendance with a very good spirit.

During the year there were two T.U. Clinics held. The State Clinic was held at the First Church, Asheville with excellent speakers from the Southern Baptist T.U. Department of Nashville, Tenn. and our State T.U. Department.

Our Associational Clinic was held with the First Church of Sylva.

With our new literature it will help us to better carry out the command of Jesus when he said, "to teach them whatsoever I have commanded you."

Respectfully submitted,  
Everett Wilson

## BAPTIST CHILDREN'S HOMES OF NORTH CAROLINA, INC.

Under the impact of the life, ministry and teachings of Christ and under the leadership of the Holy Spirit, North Carolina Baptists, eighty-five years ago launched a Christian ministry of child care. This has grown considerably and is widely recognized for its qualities of service and pioneering spirit. Sons and daughters of the Children's Homes are scattered throughout the world. They are actively engaged in all walks of life and are making a significant contribution to the uplift of mankind as a result of their early Christian training made possible by North Carolina Baptists and other friends.

The contribution of our Baptist people through the Cooperative Program the Thanksgiving offering and special gifts are essential to our continued operation and are received with deep appreciation. An increasing number of friends are finding a rewarding stewardship opportunity through the establishment of trusts for the Homes and by means of wills and estate planning for the needs of dependent children. Members of the staff are available for consultation in estate planning and the preparation of wills.

Members of the Board of Trustees and members of the staff of the Homes are dedicated to a program of child care that will merit the undivided loyalty and support of our people and that will be worthy the blessings of our Lord. We covenant with you to face the future as we have the past: to offer Christian nurture to children in distress in the name of Christ our Saviour and Lord.

Respectfully submitted,  
Tom Clayton

## BAPTIST FOUNDATION

The fact that The North Carolina Baptist Foundation, Inc. has tripled its assets during the past eight years is proof that this service arm of the Convention has found favor with North Carolina Baptists.

Since the Foundation was reactivated in 1966, assets have increased from \$350,000 to more than one million dollars. This includes trust funds and real estate.

The Foundation advances the Kingdom of God in two major ways: by serving individuals and by serving Baptist agencies and institutions. This includes the Cooperative Program, Missions, Higher Education, the Baptist Hospital, and Baptist Homes for the Aging.

The Foundation has again this year put a major interest on the making of wills.

Many churches have used the facilities of the Foundation to conduct Will Clinics, and reports from these clinics indicate that they have been very successful.

The Baptist Foundation has had a most successful year, is on the move, and is rendering service to individual Baptists in a concrete way.

Respectfully submitted,

C. Gordon Maddrey

## ANNUITY BOARD

"Good Experience credit" is a new term in Protection Program vocabulary. "Good experience credit" means larger benefits for active and retired members as of January 1, 1970.

For the active member and his family the stipulated amounts of eligible benefits in Plans A10 and A11 (formerly Southern Baptist Protection Plan) now are the minimum. The "good experience credit" will be extra - over and above the minimum. For 1970 the "good experience credit" will be about 2% of the retirement credits accrued as of that date. The amounts credited in the future may vary, depending on interest earned.

For the fourth consecutive year the Annuity Board mailed a "13th Check" to all recipients of life retirement benefits. The extra check, amounting to 13% of the annual benefit, was the largest to date.

Since 1918 the Annuity Board has paid \$73,717,267 in benefits to Southern Baptist ministers, agency and church employes, widows and children through the programs administered.

Highlights of 1969 were: 24,256 active members in Plan A of Protection Program, 9,756 in Plan B, and 3,358 in Plan C. There are 14,871 active members in Health Benefit Plan, and 9,336 in Life Benefit Plan. The Total Benefits paid were \$7,273,851.

The Tuckaseegee Association and 12 churches are participating in the Protection program.

Respectfully submitted,

Rev. Bob Bruhn

## CHRISTIAN EDUCATION

The seven North Carolina Baptist colleges had enrolled last year more than 600 students who have dedicated their lives to full-time Christian service. The largest

number of these young people will become pastors, missionaries, directors of religious education, directors of church music, chaplains, denominational workers, and Christian college teachers. There were enrolled last year in Southern Baptist colleges 7,070 who have chosen to give their lives to the service of the denomination. These include 3,671 ministerial students, 863 home and foreign mission volunteers, 610 church education volunteers, 853 church mission volunteers, and 1,081 who have volunteered for some category of Christian vocational service.

The North Carolina Baptist colleges are grateful for the generous support they have received during the past year from the Cooperative Program: Campbell College - \$293,223; Chowan College - \$175,583; Gardner-Webb College - \$166,804; Mars Hill College - \$252,840; Meredith College - \$252,840; Wake Forest University - \$430,178; and Wingate College - \$184,362.

Now is the time to begin preparation for the observance of Baptist College Day Sunday, June 20, 1971. The Baptist College Day offering helps to meet critical financial needs.

The Council on Christian Higher Education continues to serve as a coordinating agency of the Baptist colleges and the Baptist State Convention. Special material may be obtained concerning all of our Baptist colleges by writing the Council on Christian Higher Education, 301 Hillsborough Street, Raleigh, N.C. 27603.

Respectfully submitted,

Robert L. Clegg

## CHRISTIAN LITERATURE

More than ever before, North Carolina Baptists need a dependable source of information. For 137 years, North Carolina Baptists have had the BIBLICAL RECORDER as a dependable source of information. Week by week it goes into the homes of nearly 90,000 families, striving to speak the truth in love.

Your church would not think of trying to carry out its mission without literature devoted to the Sunday School, Church Training, W.M.U., Brotherhood and all other church organizations. The RECORDER is just as important and should be in the budget just as this literature is. The cost is only 4¢ a week, a penny less than a post card. Your church is the loser by not taking this step. Won't you do it this coming year?

Respectfully submitted,

Mary Bennett

## HOMES FOR THE AGING

God has blessed our Homes for the Aging through all of our nineteen years, and during the past year in a very special way. We acknowledge His goodness and thank Him for every manifestation of His love. We also want to express sincere gratitude to our Baptist people for their increased love and concern for the 195 dear elderly people to whom we are ministering in our five Baptist Homes - Resthaven, the Hayes Home, and Nursing Care Unit, in Winston-Salem; the Albermarle Home in Alber-

marle; the Hamilton Home, in Hamilton; and the Yanceyville Home, in Yanceyville.

An urgent appeal was made to our Baptist people before our offering in February to help us reduce the alarming deficit in the operation of the Homes. This plea was heard, and the offering, of \$168,349.34, from July 1, 1969 through June 30, 1970 from our Baptist Churches, has exceeded all other offerings in previous years. The Tuckaseegee Association of churches responded with an offering of \$709.87.

Of great interest in our Development Program is a proposed new addition to our present Nursing Care Unit. Judge and Mrs. William M. York, of Greensboro, North Carolina, have offered a gift of \$30,000.00 by September 1, 1970. If this proposal is fulfilled, 10 to 12 additional rooms would be made available, with accommodations for 20 to 24 people, and bringing our total nursing care capacity to 80 beds. We appeal to Baptist people to pray for the success of this very special project in the care of our elderly sick.

There is no greater security for an older person than that of the Christian nurture and love offered in our Baptist Homes, and we thank the Lord, and our Baptist people, for this ministry. We shall continue to look to Him, and to our people, on behalf of these to whom Christian love means so much, in the faith that our needs will be supplied.

Respectfully submitted,  
Mrs. Dot England

## BAPTIST HOSPITAL

Our Medical Center continues a high quality program of medical care, training of medical personnel, and research in the causes and treatment of the diseases which afflict us. In the face of serious financial problems, the hospital staff is working more diligently than ever to minister to our people in keeping with their needs and to the limit of the hospital's resources.

The hospital has instituted more efficient admission procedures regarding patients' financial resources and plans for payment of hospital bills. Trained counselors are interviewing patients and their families regarding advance payments which are now required and for getting more accurate information on those who will need help. In this way they are able better to discover those patients who may be eligible for medical care assistance through Social Services departments or other health agencies, and can start proceedings at once for getting these patients certified if this has not already been done. These agencies pay a major part of the cost for a patient they certify, but not the total cost, and the Mother's Day Fund must pay the balance. A member of the family must go to the agency and give the necessary information, and getting this done is often a real problem. Many of our pastors have helped in this connection and have rendered important service for the patients and the hospital.

After paying the difference between what the agencies pay and the total cost for these patients, the Mother's Day Offerings are used to help as many as possible of those who are not eligible for certification and who themselves cannot pay the total cost of their care. First preference must be given to those patients whose needs are greatest and most urgent. The free care the hospital gives must now be limited in keeping with the funds provided for this purpose, however, because the hospital cannot continue to go deeper in debt.

There were 34 churches of the Tuckaseegee Association contributing \$2,761.38 to the Mother's Day offering. Last year 1969 we had 40 churches contributing \$3,786.45.

Respectfully submitted,  
J.D. Parker

## REPORT OF HOSPITAL CHAPLAINCY

Paul A. Barker, Chaplain, C.J. Harris Community Hospital

Mr. Moderator, Member and Friends of The Tuckaseegee Association,

How tremendous is the power available to us who believe in God. That power is the same divine energy which was demonstrated in Christ when God raised Him from the dead." (Eph. 1:19,20 - Phillips")

As we participate in the Hospital Chaplaincy in our own community we are indeed seeking to "LIVE THE SPIRIT OF CHRIST IN OPENNESS AND FREEDOM".

Among the numerous duties and privileges of the Hospital Chaplain, let me mention a few of those mentioned by The Committee on Chaplaincy, of The Jackson County Ministerial Association:

1. The Chaplain will serve from 9:00 A.M. to 1:00 P.M., Monday, through Friday.
2. The Chaplain shall notify all Pastors of their patients in the hospital, by the telephone or by mail.
3. The Chaplain shall visit all out-of-town and non-church patients.
4. The Chaplain shall keep a Chaplain's File for Local Ministers to check daily.
5. The Chaplain shall be available to give assistance to the doctors, nurses and hospital administration.
6. The Chaplain shall be available to the local churches and other organizations to promote the chaplaincy program.
7. The Chaplain shall be responsible for an annual Institute, for laity and clergy, in hospital visiting.

On June first, 1970 this work was begun. Let me describe one day at the hospital, which took place just last week. Upon arriving fifteen minutes early the chaplain discovered that he could use the extra time, for, as he looked over the roster of patients there were 62, plus eight babies! This is considerably above our average of 47.6 and 4.1 babies.

Fortunately there had been no deaths during the night. The chaplain checked each patient by name, pulled the cards from the files of those who had been discharged, looked for the names of the pastors whom the patients had listed to be notified, called the pastors who could be reached and then mailed cards to nine others.

The chaplain visited twelve patients on second floor and fifteen on third, listening to the deep needs which each one was seeking to tell someone. These visits led to five interviews expressing personal spiritual needs. Before one knew it the time was 12:45 P.M. A nurse reminded the chaplain that he had promised to speak to the student nurses on "The Christian Family." There was an excellent response and interested participation. The day ended at 3:45 P.M. What a day of spiritual challenge, witness and service.

There are many phases of the work in a hospital which will tug at your heart. For

example, one day an expectant mother was critically ill. The doctor asked me to visit her again. She said, "Do you think that God hears my prayers?" "What would you like to tell Him?" the chaplain asked. "I want to give Him my life anew!" she said. Assurance was given her, "If we confess our sins, he is faithful and just to forgive us our sins, and to cleanse us from all unrighteousness" 1 John 1:9. We had prayer together. She said, "He does! He does receive me. I will soon be with Him!"

The next morning I saw a new baby boy, but the mother was gone. She had gone to meet her Lord and Saviour!

The chaplain called a local pastor who administered to the family. This family will never forget that Pastor. One can never forget the words, of Jesus, "Inasmuch as ye have done it unto one of the least of these, ye have done it unto me."

Almost two months have passed and that precious baby has grown from 3 lbs. 14 oz. to 5 lbs.! Day by day the nurses have given this little boy tender love and care under the wise direction of the doctors, and with the encouragement of the chaplain and the pastors of this area.

Different Christian men and women have asked about adopting this little boy, but his grandparents came for him last week to take him home.

The nurse accompanied them to the car, and smiling through her tears, returned to the nursery, to shower her love and care upon other children entrusted to her for a few days. This is "LIVING THE SPIRIT OF CHRIST IN OPENNESS AND FREEDOM."

Thank God for Christian nurses and doctors! Thank God for our pastors and laymen who visit the sick in the spirit of the Master.

It has been the privilege of the Chaplain to visit three churches and to preach at the following churches: Webster Baptist, Sylva Presbyterian, Old Savannah, Shoal Creek, Tuckaseegee, First Baptist and First Methodist in Sylva and Presbyterian in Cullowhee. It is the desire of the Chaplain to visit every church possible, by invitation of the pastor, as time permits.

May I ask your prayers and continued cooperation as we seek together to "LIVE THE SPIRIT OF CHRIST IN OPENNESS AND FREEDOM."

Respectfully submitted:

Paul A. Barker, Chaplain  
C.J. Harris Community Hospital,  
Sylva, N.C.

8/13/70

Churches desiring to have a part in the support of the Chaplaincy Program, please contact: Rev. Judson Rotan, R. 1, Box 131, Sylva, N.C. 28779, or call: 586-2631.

This is a work of faith and is entirely dependent upon the cooperation of each church served by the hospital.

## GEORGE W. TRUETT BAPTIST CAMP

Again we must praise the Name of our Lord! There is no other way to explain the phenomenal growth that has occurred at Truett Camp over these past three years. We have just completed our second consecutive year of victory in all areas of Camp life. We praise our Lord for all of these blessings, and thank you, the people and churches of

Region 10, for your help in making them possible.

Among the many improvements this year were the new kitchen, remodeled showers, redecorated dining hall, and the Rev. Yancey Clegg Memorial Library. There are still many other physical improvements needed, but we know that with your continued support we will be able to soon meet these needs also.

Probably the three greatest needs facing the Camp now are:

- (1) The completion of a combination office and canteen building. It is already under construction and is being built with part of the logs from the original George Truett house.
- (2) The erection of a semi-open air chapel, with class room space. This too, will be partly built from the Truett home logs.
- (3) The purchasing of new bedding. There is desperate need for new bunks, mattresses and springs.

The attendance this year averaged 32 campers and 8 staff members each week. The total average 40 per week was down by 2 from last year. The total attendance this year was 222 campers as compared with 230 last year. Of these 222 there were 29 professions of faith. There were 65 other types of decisions made for Christ. A total of 94 decisions for Christ were recorded for the 7 weeks.

Finances made another leap forward this year. Last year we received gifts totaling \$5,252.91, which more than doubled the previous years income from gifts. The State Baptist Convention contributed \$2,530.00 of the amount given last year. The gifts this year from churches and individuals within Region 10 was \$5,445.26. In addition the Baptist State Convention of North Carolina gave \$3,000.00. This brings our total gifts this year to \$8,445.26.

The Advisory and Promotional Committee is suggesting that all of the churches in Region 10 observe Truett Camp Day on the first Sunday in June each year. You will be receiving more information on this later.

In spite of the increased gifts it has become necessary to increase tuition next year. The exact amount will be determined by the Camp Committee and will be publicized in the new literature. The cost of operating the Camp has exceeded the income from operations by almost \$1,000 this year.

We rejoice over a great year. We pray for and expect a continued growth in the years ahead.

Respectfully submitted,  
Jesse A. Bailey

W. M. U.

As it relates to the entire church and its other organizations, the W.M.U. seeks to worship, witness, educate, minister and apply. Frank Smith stated it well when he said the church should be "a divine adventure filled with holy excitement - no longer satisfied to make religious noises, compile statistics, feed, entertain, and coddle the saint; but bring a healing gospel to the open sores of the world." We are in "An era characterized by conviction, courage, compassion, and commitment." This should be the desire and goal of W.M.U. NOW.

The Fall Leadership Conference was led jointly by the Director and Associate Director. This meeting, held at Sylva, First, was well attended, and we believe much was accomplished. Here it was agreed that we would have a Home Mission Study for the

entire Association. Later, this study proved to be a great success.

The regional "Shaping the 70's" clinic was attended in Asheville by the W.M.U. Director and Sunbeam Director. Later Kathryn Bullard led our Associational Clinic which was attended by representatives from 13 churches.

Dr. David Daniel was the featured speaker of our Annual W.M.U. meeting at East Sylva. Everyone went away with a deep sense of need for suffering humanity. He challenged us to share Christ with the world.

We are pleased with our Girls Auxiliary work. The annual prayer retreat was held at Field of the Woods in Murphy. This meeting always encourages our girls and gives greater incentive to attend our camp provided at Truett. We understand this was a record year for G.A. camps, and many decisions for Christ were made.

Beginning in October of this year, all boys four years and up will have work especially geared to their interests. If the men in our churches fail to respond to their challenge in this area that is so vital to mission development of our children, we urge the W.M.U. to continue to sponsor their organizations. We must not let our boys go without leadership just because there is no active Brotherhood in our church. We ask all W.M.U. members to make it a sincere matter of prayer that God will lead men to see the necessity of a mission organization such as Brotherhood.

For four years as your Director of W.M.U., I have appreciated the support and cooperation of a faithful Executive Committee. My prayer for you now is that you will continue to study to be inspired, informed, and motivated to a great movement for Christ which should be felt in our own association, state, and to the uttermost part of the earth.

Respectfully submitted,  
Mrs. Robert L. Clegg

## EVANGELISM

In associational evangelism clinics a strong emphasis was placed upon: Shaping the 70's through Evangelism, Strength for Living Revivals, and Youth Evangelism. Some churches across the state experienced outstanding revivals as a result of dependence upon the Holy Spirit, genuine prayer, careful planning, and involvement of adults and youth in witnessing.

All Christians need to accept the challenge of Acts 2:32 - "This Jesus hath God raised up, whereof we all are witnesses." In his book, "Exploring Evangelism", Mendell Taylor reminds us of this tremendous truth: "When Christians fail to evangelize, the very existence of the church is threatened. Evangelism is indispensable in the life of the church." All Christians can reveal to the world a greater concern for evangelism and total Christianity.

New materials on lay witnessing written by Dr. Kenneth L. Chafin and other SBC leaders will be available by January 1, 1971 in the Baptist Book Stores. Training clinics on the use of these materials for pastors and laymen will be held in all associations during 1971.

An Evangelism Research Seminar has been planned at Southeastern Seminary, Wake Forest for October 5-6, 1970. This seminar will include an in depth study of five papers related to evangelism.

The 25th Statewide Evangelism Conference will be held at War Memorial Auditorium and Greensboro Coliseum on February 1-2, 1971. The closing session will be

a Youth Evangelism Night in Greensboro Coliseum which seats 16,000 with Dr. Leighton Ford of the Billy Graham Association as the featured speaker. Pray for this special session that many youth will make genuine decisions for Christ.

Respectfully submitted,

Ralph Easterly

## COOPERATIVE PROGRAM

In a day when many major denominations are cutting back their missions programs we are pleased to report that Southern Baptists are making large advances. For instance, in the last seven years we have gone from \$8,452,410 to \$13,836,619 given to foreign missions through the Cooperative Program.

In order to help the churches of the Tuckasegee Association grow in support of Cooperative Program work we recommend:

- 1) That our churches keep in mind the inflationary trends of our economy and plan to increase their contributions to missions.
- 2) That every church observe Cooperative Program Month in October.
- 3) That every church observe Cooperative Program Day in April.
- 4) That contributions through the Cooperative Program be on a percentage basis rather than a fixed dollar figure. To implement a program of percentage increase to world missions through the Cooperative Program we suggest:
  - A. For churches giving under 20%, advance 2% each year up to 20%.
  - B. For churches giving 20% but under 30% level, advance 1% each year to 30%.
  - C. For churches reaching the 30% level, advance 1/2% each year until the objective set by the church is reached.

There are now five programs to help in the matter of planning, promoting and pledging church budgets offered by the Stewardship Commission.

- 1) The Forward Program of Christian Stewardship. The theme for this year is "If You Really Care - Share".
- 2) Growth In Christian Stewardship, a program designed for the church with 300 members or under.
- 3) The Christian Family Acknowledging the Lordship of Christ through Stewardship. This program is designed to teach sound money management principles to the Christian family by acknowledging the Lordship of Christ.
- 4) Tithers Enrolment Week plans
- 5) Weekend Stewardship Revival plans.

In addition to these materials, which have become standard items, graded materials have been produced to help our churches begin teaching the principles of stewardship development during the early years. "My Money Helps" and "Money and Me" are for children six through eleven. "Youth In Stewardship" (called YIS) is a five session youth fellowship emphasis.

Respectfully submitted,

Joseph Reese

## FOREIGN MISSIONS

On May 1, 1970, Southern Baptist missionaries were under appointment to 71 geographical or political entities. At the close of 1969 the Southern Baptist Foreign Mission Board had an overseas missionary staff of 2,490. This included 153 missionary associates, 4 special project nurses, and 128 missionary journeymen. Appointments during the year totaled 261 (139 career, 49 associates, 62 journeymen, 1 special project nurse, and 10 career reappointments). Between January - May, 1970, 18 more were added.

Underlying all our missionary endeavors is the ultimate purpose of leading people to new life in Jesus Christ and the cultivation of New Testament churches. At the end of 1969, reports from the Missions (organizations of Southern Baptist missionaries) totaled 5,303 churches (3,821 self-supporting), 7,375 mission points, and 4,574 national pastors. Also reported were 54,994 baptisms and 631,259 church members.

A major focus of attention during the year was the completion of the Crusade of the Americas. Plans were continued for international campaigns on a large scale in 1970 in Europe, Africa, and Asia.

The 758 schools (in 43 countries) with which our missionaries are related enrolled 93,005 students and were staffed by 3,150 national and 460 missionary teachers and administrators.

Twenty-seven publication centers overseas and at El Paso, Texas, produced over 29 million pieces: tracts, books, periodicals, Bibles, hymnbooks. Staffing these centers were 83 missionaries and 590 national workers. The COMMISSION, our foreign missions journal of the Board, reported an average monthly circulation of 79,698 in 1969.

Medical institutions in which Southern Baptist missionaries serve included 21 hospitals and 92 clinics and dispensaries, with a total of 1,538 beds. In 1969, 194 national and 47 missionary physicians labored with 387 national and 77 missionary nurses. They treated 64,508 inpatients and cared for 815,512 outpatients. Engaged additionally in the medical ministry were 1,575 nationals and 38 missionaries.

During 1969 the Foreign Mission Board provided emergency funds for the relief of human distress in Nigeria and Vietnam and in Chile where a severe drought brought much suffering. Forth-six good will and community centers were in operation in 1969, reaching people in varied ways: literacy classes, homemaking courses, Bible study clubs, and evangelistic services. Staffed by 42 missionaries and 138 nationals, these centers extended their ministry to 457,615 children and adults. Two missionaries assisted national workers in caring for 838 boys and girls in 19 children's homes.

Total contributions for Southern Baptist for foreign missions amounted to \$31,005, 797 as 1969 closed (a per capita gift of \$2.70). The 1969 Lottie Moon Christmas offering had reached a total of \$15,297,558 by May 1, 1970.

Our prayer for foreign missions must be that a new tide of spiritual power and purpose will come in and lift us up into even new and greater dimensions.

Respectfully submitted,  
Mrs. Edwin W. Allison

## STATE MISSIONS

The Division of Missions works through six departments and various specialized

ministries. In order to serve more effectively there is a Department of City Metropolitan Missions (centers over 2500 population); Town and Country (towns under 2500 population and all rural areas); Fruitland Baptist Bible Institute; Deaf Work; Interracial Cooperation; and recently approved Department of Chaplaincy Ministry. In addition, there are specialized ministries at Cherokee; in military areas; and the following institutions: Leonard Training School, Samarcand Training School; McCain Sanatorium; Odom Prison; and Morrison Training School.

The Division of Missions emphasizes service to local churches, especially those that may be classified as missions. Pastoral aid is granted to many churches in both rural and city areas. Lot aid is provided in needy situations. Along with financial aid, competent counsel will be given by department secretaries when requested by the church.

The leadership of the Division of Missions is emphasizing the salvation of the whole man. Our approach is based upon deep convictions concerning the necessity of both faith and works.

Respectfully submitted,  
Rev. Frank Reed

## HOME MISSIONS

The Home Mission Board is observing its 125th anniversary year with gratitude to God for his favor and appreciation to Southern Baptists for their support during the past century and a quarter.

Some highlights of Home Missions this past year are: 370 new missions and 97 new churches; 428 received church pastoral aid; 142 loans were granted for \$3,816,303; an additional 85 loans were executed for \$4,550,900. The total churches served were 227 with \$8,367,203.

The Home Mission Board appointed 585 new missionaries, bringing the total number of missionaries to 2,235. There are also 922 Student Summer Personnel; 74 short-term and 40 long-term Christian Service Corps; 31 youth groups with a total of 1,175 young people.

Respectfully submitted,  
Ray McCall

## HISTORIAN

This report is prepared with the hope that it may be added to at each session of the annual association till it may become in content concurrent with each annual meeting of the body. The information given herein is drawn from two sources, one being the HISTORICAL SKETCH OF TUCKASEIGEE ASSOCIATION prepared by Professor E.H. Stillwell for the celebration of our first one hundredth anniversary in 1929, and the other the MINUTES OF THE SEVENTY-EIGHTH ANNUAL SESSION OF THE TUCKASEIGEE BAPTIST ASSOCIATION held with the Shoal Creek Baptist Church, Whittier, North Carolina in 1907.



Professor Stillwell tells us that the Baptist were among the first comers to the mountains of North Carolina. He also gives us some strong evidence that the first of these to come soon established churches in the area between the Blue Ridge and the Smokies. He further states that the first probable church was established in 1790 and given the name of Three Forks Baptist Church in what is now Watauga county. Soon other churches were founded and finally grouped themselves into the Three Forks Baptist Association. From these churches brave men and women moved on and out, leading their families into other vallies and settling in their homes. Soon Buncombe and Haywood were occupied by these brave and industrious lovers of the Bible, their churches, homes and country. The names of Humphrey Posey, James Whitaker, Stephen Morgan, Thomas Snelson, Thomas Justice, and Benjamin King were prominent pioneer Baptist preachers.

The names of these brave men and their families remind us that they remembered names of men of the Bible. Some of these men including Humphrey Posey were among the first to come into the territory of our own association.

In 1821 ten members of the Locust Old Field Baptist church in Haywood county received letters from their mother church to form a new church west of the Balsam Mountain. These ten members met with Adam Corn and Joseph Bryson from Crabtree Baptist church in Haywood County and were duly "constituted a church of Jesus Christ of the Baptist faith and order". This church was located at the mouth of Bumgarner Branch near Webster. Reverend Adam Corn was their first pastor and served them for eighteen years on one Saturday and one Sunday each month. James Styles and Benjamin Hatfield served as the first deacons. The church was known as The Tuckaseegee Meeting House. It bore this name until it was moved to a place near the mouth of Cullowhee Creek nine years later. After moving to the new location the name was changed to Cullowhee Meeting House.

Out of this has grown the present Cullowhee Baptist Church located on grounds joining the campus of Wester Carolina University.

On November 6, 1892 delegates from seven churches in the counties of Haywood and Macon met in Cullowhee and organized the Tuckaseegee Baptist association. Jackson county had not yet formed and Cullowhee was then in Macon county. The first moderator was Elder Humphrey Posey. The churches presenting representatives were Locust Old Field, Waynesville, Cullowhee, Mount Zion, Cowee, Franklin and Head of Tennessee.

From the minutes of 1907 we find this note of interest telling us that sixty three years ago there was a felt need of associational missions. A committee was formed to employ an associational missionary. The name of Reverend M. A. Love was presented to the association. The board or committee gave him his instructions to work with the destitute, assist the pastors, foster and develop the spirit of missions, and promote the cause of education. He was to receive four hundred dollars as straight salary and later to have one church to pastor one Saturday and one Sunday in each month subtracting the amount of the offerings received from his set salary. The report of the committee was not accepted by the association and the effort failed.

I prayerfully hope that this report may be added to till it is brought up to date. If you have later copies of Professor Stillwells STUDIES IN CHURCH HISTORY see that the historian for next year has access to them, also if you have old minutes of the association they will be valuable.

Respectfully submitted,  
J.E. Brown

## TIME, PLACE, AND PREACHER

The Association shall hold regular session on Thursday and Friday preceding the 3rd Sunday in August.

First Day: Morning and Afternoon session; meeting at the Zion Hill Church.  
Preacher: Rev. Ernest Jamison Sr.  
Alternate: Rev. Marshal Clayton

Second Day: Afternoon and Evening session; meeting at the Cullowhee Church.  
Preacher: Rev. Frank Reed  
Alternate: Rev. Glenn Blanton

Respectfully submitted,

Jesse Bailey  
Hardin Nicholson  
Lester Sutton  
Wayne Caldwell

## CREDENTIALS COMMITTEE

The Credentials Committee met twice this past associational year.

- 1) The Credentials Committee met in the Fall of 1969 at New Savannah Church for the purpose of questioning the Reverend John Reed. Brother John was a student at Western Carolina University and had been pastor for a year at New Savannah. He was questioned, approved and ordained at the New Savannah Church.
- 2) The Credentials Committee met in the Summer of 1970 at Scotts Creek Church for the purpose of questioning the Reverend Carl Smith. Brother Carl had been pastor for a year at Lumberton Church and they requested his ordination. He was questioned, approved and ordained at the Scotts Creek Church.

Respectfully submitted,  
Joseph Reece

## EXECUTIVE COMMITTEE

Four meetings of the Executive Committee of the Tuckaseegee Association were held during the Associational year of 1969-70.

October 13, 1969

1. Deacon's supper to be held at Lovedale November 28, 1969
2. Pastor and Sunday School meeting to be at Shoal Creek.
3. M Night to be December 1, at Sylva, First.
4. Executive Committee supper to be held December 13, 1969
5. Robert Blanton to replace Lloyd Fish as Financial Secretary.
6. Missions Committee nominations accepted. They were:

Maurice Bowen 1 year; Bobby Joe Jacobs 2 years; Conrad Burrell 3 years; and Wade Mills 4 years.

7. Pastoral Aid for Greens Creek approved.
8. Missionary aid of \$1,704 approved.
9. Committee to revise the constitution and bring up to date approved.

February 6, 1970

1. Financial Reports made from August 1969 through January 1970.
2. Calendar of Activities presented by the Moderator.
3. Evangelism report made by Ralph Easterly
4. Sunday School Report given by Lloyd Wood.
5. Truett Camp report given by Jesse Baily.

April 6, 1970

1. Associational Deacons report presented.
2. Sunday School Leadership Conference set at East Sylva on April 27.
3. Plans announced for the Associations participation in the Billy Graham Crusade at Knoxville, Tenn.
4. Financial Report given by Robert Blanton.
5. Associational Missionary gave a report on the Youth work in the association and plans for the summer 1970.
6. Miss Clara Lynn Green approved as Summer Youth Worker.
7. Associational Week of Prayer set for July 19-26.
8. J.D. Parker gave a report on the Baptist Hospital and the coming Mother's Day offering.
9. Moderator presented a report on the chaplaincy program planned for C.J. Harris hospital.

June 20, 1970

1. Youth program present and future discussed for the association.
2. Seminary Extension program for the coming year discussed.
3. Jesse Baily offered his resignation as Chairman of the Missions Committee. The resignation was accepted.
4. Robert Blanton gave the Treasurer's report.
5. Truett Camp report given by Jesse Baily.
6. Pastor's overnight retreat discussed for the 4th and 5th of September 1970.

Respectfully submitted,  
Charles L. Dean

## CALENDAR OF ACTIVITIES

FOR 1970-71

Recognizing that it is impossible to remove all conflicts from the calendar, the Calendar Committee felt however that an effort should be made to remove as many

conflicts as possible. Therefore, the committee suggests that the 4th MONDAY night of each month be set aside by the pastors and churches and by the associational organizations as "ASSOCIATIONAL NIGHT". These nights could be used as follows:

- 1) "Association Night" of the first month of each quarter would be pastor's and Sunday School Director's night. These meetings would be used by state and local leaders to lead and interpret the program of the 70's.
- 2) "Association Night" of the second month of each quarter would be Area Night or some special mass meeting. The Association Missionary and the associational leaders will direct this endeavor in an attempt to meet with the churches of the different areas and discover how the association might best serve them.
- 3) "Association Night" of the third month of each quarter would be Leadership Conferences for Sunday School, Church Training, Deacons, and W.M.U.

The Calendar Committee also suggest that the Associational Council meet as soon as possible after the Association Meeting with the new officers and plan a more definite and complete calendar of dates and events. Also we suggest that this calendar of events be mimeographed and given to pastors and church leaders by the middle of September, 1970.

The Calendar Committee offers these suggestions recognizing that if any plan works it must be God's plan and have the cooperation of the pastors, churches and officers who make up the association.

Respectfully submitted,  
Robert Blanton

## TREASURER'S REPORT

July 1968 to June 30, 1970

### EXPENDITURES:

Missionary Salary	\$4,620.00
Car Allowance	1,299.96
Retirement	366.74
Convention Expense	50.00
Office Rent	240.00
Telephone	174.03
Office Supplies	101.01
Extra Help	114.75
Office Equipment	225.65
Bible School	162.45
Training Union	70.56
Minutes	339.85
World Mission Conference	1,020.38
W. M. U.	4.00
Postage	42.00
Missionary's Christmas	25.00
Miscellaneous	237.67

---

\$9,094.05

Balance July 1, 1969	\$ 631.26
Total Deposits	8,364.20
Balance July 1, 1970	- 98.59

Respectfully submitted,

Mrs. Barbara F. Vance,  
Treasurer  
Rev. Robert Blanton,  
Financial Secretary

PROPOSED BUDGET  
FOR 1970-71

Monthly

Missionary's Salary	\$4,620.00	\$ 385.00
Travel Expense	1,300.00	108.33
Convention Expense	400.00	33.33
Retirement	400.00	33.34
Social Security	150.00	12.50
Health Insurance	200.00	16.67
Office Rent	240.00	20.00
Telephone (Office)	300.00	25.00
Office Supplies & Postage	600.00	50.00
Sunday School	100.00	8.33
Training Union	100.00	8.34
W. M. U.	100.00	8.33
Associational Deacons	100.00	8.33
Associational Minutes	350.00	29.17
Miscellaneous	300.00	25.00
<b>Total</b>	<b>\$9,260.00</b>	<b>\$ 771.67</b>

Respectfully submitted,

Rev. Robert Blanton, Chairman  
Finance Committee

CONTRIBUTION FROM CHURCHES: 1969-1970

	Associational Program	World Mission Minute		Associational Program	World Mission Minute
Balsam	50.00	7.50	Calvary		12.50
Balsam Grove			Cashiers	60.00	
Big Ridge			Cullowhee	375.00	
Black Mtn.	51.72		Deitz Mem.	81.39	25.20
Buff Creek	425.00	50.00	Dicks Cr.	21.11	3.75

East Fork	100.00	50.00		Orchre Hill	300.00	50.00	18.75
East Sylva	300.00	50.00		Old Savannah	125.00	50.00	
Fall Cliff				Pine Creek			
Greens Cre.	392.70	50.00	12.00	Rockdale	90.00		
Hamburg	112.50			Scotts Creek	600.00	50.00	
Hyatts Chap			2.50	Shoal Creek	110.50	50.00	
Jarrett Mem.	159.97			Sols Creek			
John Creek			1.25	Speedwell	55.00		
Laurel Bran.				Sylva, First	793.00	50.00	20.00
Little Savan.				Tilley Creek			
Locust Field				Trout Creek			
Long Branch	80.00			Tuckaseegee	140.00		
Lovedale	480.00	50.00	15.00	Unity	25.00		6.25
Lumberton	60.00			Webster	320.39		
Moses Creek	30.00			Wilkesdale	82.90	50.00	
Mt. Pleasant	25.00	50.00	10.00	Wilmont			
New Hope	20.00			Wolf Creek			
New Savannah	60.00		1.20	Yellow Mtn.	27.30		
Oak Ridge				Zion Hill			
				<b>Total</b>	<b>\$5,553.48</b>	<b>\$625.20</b>	<b>\$110.75</b>

OTHER SOURCES:

Baptist State Convention \$1,704.00

From Associational meetings, gifts and other source = \$298.77

Study Course books = \$72.00

## Our Beloved Dead

BALSAM

Rev. O.J. Beck

Mr. Marian Ashe

Mrs. Nannie Phillips Coward

BLACK MOUNTAIN

Mrs. Cocoe Gilliams

BUFF CREEK

Mr. Charlie Bryson

CULLOWHEE

Mr. Jim Parker

DEITZ MEMORIAL

Mrs. Etta Deitz

Mrs. Laura Deitz

Mrs. Ida Deitz

EAST SYLVA

Mrs. Jim Dillard

Mrs. Myrtle Smith

Mr. Dave Conner

JOHN'S CREEK

Mrs. Juanita Queen

Mr. Norman Drake

LOCUST FIELD

Mrs. Georganne Hensley

Mr. Oscar Cabe

LONG BRANCH

Deacon Tom Lawing

LOVEDALE

Mrs. Mack Ashe  
 Mrs. Ennis Ashe, Sr.  
 Mrs. A.J. Shields  
 Mrs. Allie Lewis  
 Deacon John Byrson  
 Mr. Roy Elders  
 Mr. Wait Reid

LUMBERTON

Mrs. Hattie Barnes  
 Mrs. Horace Phillips  
 Deacon Horace Phillips  
 Mr. Bill Bennett

MOSES CREEK

Mrs. Jeff Buchanan

NEW HOPE

Rev. Ray Bryson  
 Mr. Lawson Melton  
 Mr. Jerome Farmer  
 Deacon C.B. Parker

MT. PLEASANT

Mr. Guy Henry  
 Mrs. Cordelia Fisher  
 Mr. P.J. Crawford

OCHRE HILL

Mr. Claude Wilkes

OLD SAVANNAH

Mrs. Rhoda Estes  
 Mrs. Iva Buchanan  
 Mr. Mitchell Barker  
 Mr. Louie Cabe  
 Mr. Robert Estes  
 Mr. Sherman Estes

ROCKDALE

Mrs. Floyd Brooks

SCOTTS CREEK

Mr. Thurman Allen

Mr. Zeb Cook

Mrs. J.W. Cope

Mr. W.D. Davis

Mrs. Mag Fisher

Mrs. Paul Gass

Deacon B.E. Harris

SHOAL CREEK

Deacon W. Clay Rogers

SPEEDWELL

Rev. Zollie Fox

Mr. Ben Lee Davis

Mr. Henry L. Taylor

Mrs. Minnie Flake

SYLVA, FIRST

Mrs. Sam H. Monteith

Mr. Harold Morgan

Mr. Danny Queen

Mrs. J.L. Corbin

TILLEY CREEK

Mr. Harliem McCall

TUCKASEIGEE

Mrs. Myrtle Denton

Mr. Elbert Davis

WEBSTER

Mr. Andrew Allison

Mrs. Bonnie R. Cunningham

WILKESDALE

Mrs. Polly Cope

Mr. Charlie Ridley

YELLOW MOUNTAIN

Mr. Carmon Henderson

Mrs. Bertie Buchanan

ZION HILL

Mrs. Bertha Johnson

Deacon H.A. Williams

Deacon Walter Wilson

Big Ridge

Black Mountain ..... Bill Haskett, Rt. 3, Sylva, N.C. 28779

Buff Creek ..... Lloyd Fish Jr., Rt. 1, Sylva, N.C. 28779

Calvary ..... Grover Cabe, Rt. 2, Sylva, N.C. 28779

Cashiers ..... J.C. Robinson, Cashiers, N.C. 28717

Cullowhee ..... Ted Purcell, Cullowhee, N.C. 28723

Deitz Memorial ..... J.E. Brown, Rt. 66, Cullowhee, N.C. 28723

Dicks Creek ..... Glenn Blanton, Rt. 1, Sylva, N.C. 28779

East Fork ..... Raymond Shuler, Sylva, N.C. 28779

East Sylva ..... Charles Dean, Box 516, Sylva, N.C. 28779

Fall Cliff ..... Dill Mathis, Rt. 1, Sylva, N.C. 28779

Greens Creek

Hamburg ..... Mike Dellinger, Glenville, N.C. 28736

Hyatts Chapel ..... Clyde Johnson, Bryson, City, N.C. 28713

Jarrett Memorial

John's Creek ..... Dillard Wood, Rt. 67, Cullowhee, N.C. 28723

Laurel Branch ..... Bob Jones, Box 3, Tuckasegee, N.C.

Little Savannah ..... Verlin Bryson, Rt. 66, Cullowhee, N.C. 28723

Locust Field ..... Robert Parris, Rt. 1, Sylva, N.C. 28779

Long Branch ..... Marshal Clayton, Rt. 3, Sylva, N.C. 28779

Lovedale ..... Joseph Reese, Rt. 3, Sylva, N.C. 28779

Lumberton ..... Carl Smith, Sylva, N.C. 28779

Moses Creek ..... Marshal Clayton, Rt. 3, Sylva, N.C. 28779

Mount Pleasant ..... Hardin Nicholson, Rt. 3, Sylva, N.C. 28779

New Hope ..... Jack Holcombe, Rt. 1, Sylva, N.C. 28779

New Savannah ..... Tim Norman, Sylva, N.C. 28779

Oak Ridge ..... James Donaldson, 1124 Allens Creek, Waynesville, N.C.

Ochre Hill ..... W.L. Sorrells, Rt. 1, Waynesville, N.C. 28786

Old Savannah ..... Wayne Caldwell, Rt. 1, Sylva, N.C. 28779

Pine Creek

Rockdale ..... Hubert Bryson, Sylva, N.C. 28779

Scotts Creek ..... Judson Rotan, Rt. 1, Sylva, N.C. 28779

Shoal Creek ..... Frank Reed, Rt. 1, Whittier, N.C. 28789

Sols Creek ..... Robert Dean, Candler, N.C.

Speedwell ..... Wesley Hooper, Cullowhee, N.C. 28723

Sylva, First ..... Robert Clegg, Box 517, Sylva, N.C. 28779

Tilley Creek ..... Delos Parris, Box 67, Dillsboro, N.C. 28725

Trout Creek

Tuckasegee ..... Ralph Easterly, Box 36, Tuckasegee, N.C.

Unity ..... Delos Hoyle, Waynesville, N.C. 28786

Webster ..... Ray McCall, Waynesville, N.C. 28786

Wilkesdale ..... Frank Reese, Waynesville, N.C. 28786

Wilmont ..... Robert Parris, Rt. 1, Sylva, N.C. 28779

Wolf Creek

Yellow Mountain ..... Everett Wilson, Rt. 66, Cullowhee, N.C. 28723

Zion Hill

# CHURCH DIRECTORY

## PASTORS

Name of Church

Pastor's name and address

Balsam ..... Cecil Saunders, Balsam, N.C. 28707

Balsam Grove ..... Ralph Ward, Sylva, N.C. 28779

CHURCH CLERKS

Name of Church	Church clerk's name and address
Balsam	Mrs. Stella Mae Bryson, Balsam 28707
Balsam Grove	Mrs. Dillard Wood, Cullowhee 28723
Big Ridge	Mrs. Dorothy Pruett, Sylva 28779
Black Mountain	Bertha Woods, Cullowhee 28723
Buff Creek	Mrs. Dewitt Parris, Rt. 1, Sylva 28779
Calvary	Emma Bryson, Rt. 2, Sylva 28779
Cashiers	Mrs. Effie Hooper, Cashiers, 28717
Cullowhee	Mrs. Lucy Crawford, Rt. 67, Cullowhee 28723
Deitz Memorial	Mrs. C.V. Cowan, Rt. 3, Sylva 28779
Dicks Creek	Mrs. Jarvis Turpin, Rt. 2, Whittier 28789
East Fork	Dorothy Deitz, Rt. 2, Sylva 28779
East Sylva	Maxine Montieth, Box 102, Sylva 28779
Fall Cliff	Lillie Coggins, Rt. 66, Cullowhee 28723
Greens Creek	Mrs. Barbara Green, Rt. 2, Sylva 28779
Hamburg	Gordon Jennings, Box 437, Glenville, 28736
Hyatts Chapel	Margaret Gunter, Rt. 1, Whittier 28789
Jarrett Memorial	Mrs. Charles Messer, Box 24, Dillsboro 28725
Johns Creek	Mrs. Marie Lovedahl, Rt. 67, Cullowhee 28723
Laurel Branch	Mrs. Agnes Ammons, Rt. 2, Sylva 28779
Little Savannah	Miss Jo Ann Lewis, Rt. 3, Sylva 28779
Locust Field	Richard Sutton, Box 222, Dillsboro 28725
Long Branch	Elze Wilkey, Rt. 3, Sylva 28779
Lovedale	Mrs. Hilda Hoyle, Box 851, Sylva 28779
Lumberton	Ruth Houston, Rt. 67, Cullowhee 28723
Moses Creek	Roscoe Hooper, Rt. 67, Cullowhee 28723
Mount Pleasant	Pearison Henry, Rt. 1, Sylva 28779
New Hope	Thermalene Ensley, Rt. 2, Sylva 28779
New Savannah	Mrs. Wiley Collins, Rt. 2, Sylva 28779
Oak Ridge	V.C. Mathis, Box 27, Tuckaseegee, 28783
Ochre Hill	Mrs. Jack Cope, Rt. 1, Sylva, 28779
Old Savannah	Mrs. Ruby Cagle, Box 493, Sylva 28779
Pine Creek	Denver Henderson, Cullowhee, 28723
Rockdale	Eulis Brooks, Whittier 28789
Scotts Creek	Mrs. Clyde Vance, Rt. 1, Sylva 28779
Shoal Creek	Frank Berry, Rt. 1, Whittier 28789
Soils Creek	
Speedwell	Mrs. Ida Mae Wilkes, Rt. 66, Cullowhee 28723
Sylva First	Mrs. Don Blanton, Rt. 3, Sylva 28779
Tilley Creek	Mary C. Ashe, Rt. 66, Cullowhee 28723
Trout Creek	
Tuckaseegee	Mrs. Ruth Smith, Cullowhee 28723
Unity	Mrs. Robert Carter, Rt. 1, Sylva 28779
Webster	Ernest Penland Jr., Box 96, Webster, 28788
Wilmington	Mrs. Ethel Ashe, Rt. 2, Whittier, 28789
Wolf Creek	

Yellow Mountain	Mrs. Alice Woods, Rt. 2, Cashiers, 28717
Wilkesdale	Linda Reece, Waynesville, 28786
Zion Hill	Cecile Woodard, Rt. 2, Sylva 28779

CHAIRMEN OF DEACONS

Name of Church	Chairman of deacons' name and address
Balsam	Lewis McCall, Rt. 1, Sylva 28779
Balsam Grove	Lon Morgan, Cullowhee 28723
Black Mountain	Lonnie Dills, Cullowhee 28723
Buff Creek	George Brown, Rt. 1, Sylva 28779
Calvary	Allen Bradley, Rt. 2, Sylva 28779
Cashiers	Edward Fowler, Cashiers, 28717
Cullowhee	Dr. Pelham Thomas, Cullowhee 28723
Deitz Memorial	Clinton Buchanan, Rt. 2, Sylva 28779
Dicks Creek	Jarvis Turpin, Rt. 2, Sylva 28779
East Fork	
East Sylva	Coy Deitz, Rt. 2, Sylva 28779
Fall Cliff	Tommy Fisher, Box 857, Sylva 28779
Greens Creek	Maney Coggins, Rt. 66, Cullowhee 28723
Hamburg	Darrell Frizzell, Rt. 2, Sylva 28779
Hyatts Chapel	Clarence Lusk, Glenville, 28736
Jarrett Memorial	Troy Gunver, Rt. 1, Whittier, 28789
Johns Creek	Joy Wilkey, Rt. 3, Sylva 28779
Laurel Branch	Bernard Brown, Rt. 67, Cullowhee 28723
Little Savannah	Clyde Ammons, Rt. 2, Sylva 28779
Long Branch	Norman Frizzell, Rt. 3, Sylva 28779
Locust Field	George Wilkey, Sylva 28779
Lovedale	Johnny Beck, Rt. 3, Sylva 28779
Lumberton	Roy Potts, Rt. 67, Cullowhee 28723
Moses Creek	
Mount Pleasant	Everett Henry, Rt. 1, Sylva 28779
New Hope	Frank Wilson, Sylva 28779
New Savannah	Lyndon Buchanan, Rt. 2, Sylva 28779
Ochre Hill	Guy Sutton, Rt. 1, Sylva 28779
Old Savannah	Roy Melton, Rt. 2, Sylva 28779
Pine Creek	Willie Crawford, Cullowhee, 28723
Rockdale	Gardner Gunter, Whittier 28789
Scotts Creek	Denver Montieth, Rt. 3, Sylva 28779
Shoal Creek	Maurice Bowen, Whittier 28789
Speedwell	Bowers Pressley, Rt. 66, Cullowhee 28723
Sylva First	Jack Farmer, Rt. 2, Sylva 28779
Tilley Creek	Claude Holland, Rt. 66, Cullowhee 28723
Tuckaseegee	Chris Burrell, Tuckaseegee 28783
Webster	John Stillwell, Rt. 3, Sylva 28779
Wilkesdale	Fred Cope, Sylva 28779
Wilmington	H.A. Greene, Rt. 2, Whittier 28789

Yellow Mountain ..... Quince Hedden, Rt. 66, Cullowhee 28723  
 Zion Hill ..... Lester Wilson, Rt. 2, Sylva 28779

SUNDAY SCHOOL SUPERINTENDENTS

Name of Church	Sunday School superintendent's name and address
Balsam .....	William Cogdill, Balsam, N.C. 28707
Balsam Grove .....	Lewis Kilby, Cullowhee, N.C. 28723
Big Ridge .....	David Pruett, Sylva, N.C. 28779
Black Mountain .....	William Watson, Cullowhee, N.C. 28723
Buff Creek .....	Conrad Burrell, Sylva, N.C. 28779
Calvary .....	Marshall Bradley, Rt. 2, Sylva, N.C. 28779
Cashiers .....	Kenneth Fowler, Cashiers, N.C. 28717
Cullowhee .....	Robert Crawford, Cullowhee, N.C. 28723
Deitz Memorial .....	Dan Buchanan, Rt. 2, Sylva, N.C. 28779
Dicks Creek .....	Perry Sutton, Dillsboro, N.C. 28725
East Fork .....	Carlin Cabe, Rt. 2, Sylva, N.C. 28779
East Sylva .....	Alvin Hoyle, Rt. 1, Sylva, N.C. 28779
Fall Cliff .....	Charlie Childers, Tuckasegee, N.C. 28783
Greens Creek .....	Allen Garner, Rt. 2, Sylva, N.C. 28779
Hamburg .....	Edwin Bryson, Glenville, N.C. 28736
Hyatts Chapel .....	Doyle Gunter, Rt. 1, Whittier, N.C. 28789
Jarrett Memorial .....	Dennis Wilkey, Rt. 3, Sylva, N.C. 28779
Johns Creek .....	
Laurel Branch .....	Jewell Thompson, Sylva, N.C. 28779
Little Savannah .....	William Lewis, Sylva, N.C. 28779
Long Branch .....	Oscar Dalton, Sylva, N.C. 28779
Locust Field .....	Buddy Brooks, Rt. 1, Sylva, N.C. 28779
Lovedale .....	C.L. Proffitt, Sylva, N.C. 28779
Lumberton .....	Ray Houston, Rt. 67, Cullowhee, N.C. 28723
Moses Creek .....	Harley Coggins, Cullowhee, N.C. 28723
Mt. Pleasant .....	Roy Crawford, Rt. 1, Waynesville, N.C. 28786
New Hope .....	Bob Ensley, Rt. 3, Sylva, N.C. 28779
New Savannah .....	Ralph Tatham, Rt. 2, Sylva, N.C. 28779
Oak Ridge .....	V.C. Mathis, Tuckasegee, N.C. 28783
Ochre Hill .....	Guy Sutton, Sylva, N.C. 28779
Old Savannah .....	Glenn Cabe, Rt. 2, Sylva, N.C. 28779
Pine Creek .....	John L. Tucker, Cullowhee, N.C. 28723
Rockdale .....	Clyde Green, Rt. 2, Whittier, N.C. 28789
Scotts Creek .....	Clyde Vance, Rt. 1, Sylva, N.C. 28779
Shoal Creek .....	John S. Hyatt, Rt. 1, Whittier, N.C. 28789
Speedwell .....	Jack Pressley, Rt. 66, Cullowhee, N.C. 28723
Sylva, First .....	James Crawford, Rt. 3, Sylva, N.C. 28779
Tilley Creek .....	Will Webb, Rt. 66, Cullowhee, N.C. 28723
Tuckasegee .....	Charles Barker, Cullowhee, N.C. 28723
Unity .....	Robert Carter, Rt. 1, Sylva, N.C. 28779
Webster .....	Ernest Penland Jr., Webster, N.C. 28788

Wilkesdale ..... Donald Dockins, Sylva, N.C. 28779  
 Wilmington ..... C.H. Ashe, Rt. 2, Whittier, N.C. 28789  
 Yellow Mountain ..... Quince Hedden, Rt. 66, Cullowhee, N.C. 28723  
 Zion Hill ..... Andrew Wilson, Rt. 2, Sylva, N.C. 28779

TRAINING UNION DIRECTORS

Name of Church	Training Union Director's name and address
Buff Creek .....	Charlotte Terrell, Sylva 28779
Calvary .....	John Childers, Sylva 28779
Cashiers .....	Ray Fowler, Cashiers 28717
East Fork .....	Bill Hubbard, Rt. 2, Sylva 28779
East Sylva .....	J.D. Robertson, Sylva 28779
Greens Creek .....	Morrison Green, Rt. 2, Sylva 28779
Hamburg .....	Verner Rice, Glenville, 28736
Jarrett Memorial .....	Nancy Cagle, Rt. 3, Sylva, 28779
Long Branch .....	Georgia Ensley, Sylva, 28779
Lovedale .....	Emily Ashe, Rt. 3, Sylva 28779
New Hope .....	Ronnie Bryson, Sylva 28779
Ochre Hill .....	Jack Cope, Rt. 1, Sylva 28779
Old Savannah .....	Mrs. Bill Green, Rt. 2, Sylva 28779
Scotts Creek .....	Frank Bumgarner, Rt. 1, Sylva 28779
Shoal Creek .....	Richard Bowen, Whittier, 28789
Sylva First .....	Dr. John Chapman, Sylva 28779
Tuckasegee .....	Mrs. Pat Haynie, Tuckasegee, 28783
Webster .....	Jim Cowan, Rt. 3, Sylva 28779
Wilkesdale .....	Charles Chambers, Sylva, 28779
Yellow Mountain .....	

BROTHERHOOD DIRECTORS

Name of Church	Brotherhood director's name and address
Scotts Creek .....	David Monteith, Rt. 1, Sylva 28779
Sylva First .....	Jack Farmer, Rt. 3, Sylva 28779

WOMAN'S MISSIONARY UNION DIRECTORS

Name of Church	Woman's Missionary Union director's name and address
Cashiers .....	Marlene Fowler, Cashiers 28717
East Sylva .....	Mrs. Edith Bryson, Sylva 28779
Greens Creek .....	Mrs. Darrell Frizzell, Rt. 2, Sylva 28779
Jarrett Memorial .....	Mrs. Dennis Wilkey, Rt. 3, Sylva, 28779

Lovedale .....	Mrs. Ralph England, Rt. 3, Sylva, 28779
New Hope .....	Gertrude Hooper, Sylva 28779
Ochre Hill .....	Mrs. Wade Mills, Rt. 1, Sylva 28779
Old Savannah .....	Mrs. Ensley Cope, Rt. 2, Sylva 28779
Scotts Creek .....	Mrs. David Montieth, Rt. 1, Sylva 28779
Shoal Creek .....	Mrs. Richard Bowen, Whittier
Sylva First .....	Mrs. Robert Clegg, Box 517, Sylva 28779
Wilkesdale .....	Mrs. Frankie Dean, Sylva 28779
Yellow Mountain .....	Mrs. Gladys Ridley, Rt. 2, Cashiers 28717

### MUSIC DIRECTORS

Name of church	Music director's name and address
Balsam .....	James Beck, Hazelwood, N.C.
Balsam Grove .....	Lewis Kilby, Cullowhee 28723
Big Ridge .....	Mrs. Cecil Clark, Glenville 28736
Black Mountain .....	Liberne Dills, Cullowhee 28723
Buff Creek .....	Lincoln Shuler, Rt. 1, Sylva 28779
Cashiers .....	Arlene Pennington, Cashiers 28717
Cullowhee .....	Earl Owen, Cullowhee 28723
Deitz Memorial .....	Grover Deitz, Rt. 2, Sylva 28779
East Fork .....	Coy Deitz, Rt. 2, Sylva 28779
East Sylva .....	Ernest Jamison Jr., Sylva 28779
Fall Cliff .....	Loney Watson, Cullowhee, 28723
Greens Creek .....	Richard Hall, Rt. 2, Sylva 28779
Hamburg .....	Marshall Henson, Franklin, 28734
Hyatts Chapel .....	Jack Hipps, Rt. 1, Whittier, 28789
Jarrett Memorial .....	Mike Deitz, Rt. 2, Sylva 28779
Little Savannah .....	Fred Frizzell, Rt. 3, Sylva 28779
Long Branch .....	Harold Wilkey, Rt. 3, Sylva 28779
Lovedale .....	Jim Chitwood, Box 1232, Cullowhee 28723
Mt. Pleasant .....	Troy McMahan, Rt. 1, Sylva 28779
New Hope .....	Bob Ensley, Rt. 3, Sylva, 28779
Ochre Hill .....	Glenn Blanton, Rt. 1, Sylva 28779
Old Savannah .....	Jimmy Ashe, Rt. 1, Sylva 28779
Scotts Creek .....	Mrs. Tom Clayton, Sylva 28779
Sylva First .....	James Fisher, Sylva 28779
Tuckaseegee .....	Miss Becky Easterly, Tuckaseegee 28783
Unity .....	Wade Ammons, Cullowhee 28723
Wilkesdale .....	Roy Shuler, Cullowhee 28723
Yellow Mountain .....	Bert Moses, Rt. 66, Cullowhee, 28723
Zion Hill .....	Bert Webb, Rt. 2, Sylva 28779

### CHURCH TREASURERS

Name of church	Church treasurer's name and address
Balsam .....	James Beck, Box 351, Hazelwood, 28738
Balsam Grove .....	Mrs. Hattie Aiken, Cullowhee, 28723
Big Ridge .....	Miss Catherine Davis, Glenville
Black Mountain .....	Lehem Dills, Cullowhee, 28723
Buff Creek .....	Betty J. Cogdill, Rt. 1, Sylva, 28779
Calvary .....	Clyde Bryson, Rt. 2, Sylva, 28779
Cashiers .....	Miss Arlene Pennington, Cashiers, 28717
Cullowhee .....	Mrs. C. A. Hoyle, Box 446, Cullowhee, 28723
Deitz Memorial .....	Dan Deitz, Rt. 2, Sylva, 28779
Dicks Creek .....	Mrs. Jarvis Turpin, Rt. 2, Whittier, 28789
East Fork .....	Opal Hubbard, Rt. 2, Sylva, 28779
East Sylva .....	Astor Flemmons Jr., Sylva, 28779
Fall Cliff .....	George McFalls, Rt. 66, Cullowhee, 28723
Greens Creek .....	Mrs. Morrison Green, Rt. 2, Sylva, 28779
Hamburg .....	Mrs. Ruth Smith, Glenville, N. C., 28736
Hyatts Chapel .....	Margaret Gunver, Rt. 1, Whittier, 28789
Jarrett Memorial .....	Walter Sutton, Box 23, Dillsboro, 28725
Johns Creek .....	
Laurel Branch .....	Mrs. Tom Hooper, Sylva, 28779
Little Savannah .....	Mrs. Carolyn Lewis, Rt. 3, Sylva, 28779
Long Branch .....	Elze Wilkey, Rt. 3, Sylva 28779
Locust Field .....	Joe Barnes, Sylva 28779
Lovedale .....	J.D. Parker, Rt. 3, Sylva 28779
Lumberton .....	Mrs. Felix Hooper, Rt. 67, Cullowhee 28723
Moses Creek .....	Roscoe Hooper, Rt. 67, Cullowhee 28723
Mt. Pleasant .....	Harry Henry, Rt. 1, Sylva 28779
New Hope .....	Delos Farmer, Rt. 3, Sylva 28779
New Savannah .....	Glenn Turpin, Rt. 2, Sylva 28779
Oak Ridge .....	Edna Mathis, Box 27, Tuckaseegee 28783
Ochre Hill .....	Mrs. Lewis Keener, Rt. 1, Sylva 28779
Old Savannah .....	Mrs. Ebb Hall, Rt. 2, Sylva 28779
Pine Creek .....	Mrs. Orville Henderson, Cullowhee 28723
Rockdale .....	Virgie Brooks, Rt. 2, Whittier 28789
Scotts Creek .....	Major Allison, Sylva 28779
Shoal Creek .....	James Ridgeway, Rt. 1, Whittier, 28789
Speedwell .....	B.F. Pressley, Rt. 66, Cullowhee 28723
Sylva, First .....	Frank Crawford, Sylva 28779
Tilley Creek .....	Mary C. Ashe, Rt. 66, Cullowhee 28723
Unity .....	Mrs. Robert Carter, Rt. 1, Sylva 28779
Tuckaseegee .....	Carey Woodring, Tuckaseegee 28783
Webster .....	Frances P. Penland, Box 96, Webster 28788
Wilkesdale .....	Troy Daves, Sylva 28779
Wilmont .....	Edna Cook, Rt. 2, Whittier 28789
Yellow Mountain .....	Roy Hedders, Rt. 66, Cullowhee 28723
Zion Hill .....	Alonzo Woodard, Rt. 2, Sylva 28779

TABLE A CHURCH MEMBERSHIP AND OTHER INFORMATION 1970		1	2	3					4	5	6	7	8	9	10	11	12	13	14	19	20	21			
Association	State	Loc (1-2-3-4-5-6-7-8-9-0)	Year organized as a church	Services held twice on Sunday?	If no, services held on					No. of High School graduates	No. of High Sch. graduates planning to attend college	Total Baptisms	Other additions (by letter, statement, etc.)	Members lost (by letter, death, statement, etc.)	Present resident members	Present nonresident members	Grand total present members	No. mem. received from non-Bapt. denominations	No. members lost to non-Baptist denominations	Value of pastor's home if owned by the church	Value of Church property as of pastor's home	Total church debt at end of this associational year			
					1st Sunday	2nd Sunday	3rd Sunday	4th Sunday	5th Sunday																
TUCKASEEGEE		NORTH CAROLINA		CHARLES DEAN																					
Box 516		Sylva		N. C.																					
28779																									
CHURCHES	PASTORS AND ADDRESSES																								
Balsam	Cecil Saunders, Balsam 28707																								
Balsam Grove	Ralph Ward, Sylva 28779																								
Big Ridge																									
Black Mountain	Bill Haskett, Rt. 3, Sylva 28779																								
Buff Creek	Lloyd Fish Jr., Rt. 1, Sylva 28779																								
Calvary	Grover Cabe, Rt. 2, Sylva 28779																								
Cashiers	J. C. Robinson, Cashiers 28717																								
Cullowhee	Ted Purcell, Cullowhee 28723																								
Deitz Memorial	J. E. Brown, R. 6, Cullowhee 28723																								
Dicks Creek	Glenn Blanton, Rt. 1, Sylva 28779																								
East Fork	Raymond Shuler, Sylva 28779																								
East Sylva	Charles Dean, Box 516, Sylva 28779																								
Fall Cliff	Dill Mathis, Rt. 1, Sylva 28779																								
Greens Creek																									
Hamburg	Mike Dellinger, Glenville 28736																								
Hyatts Chapel	Clyde Johnson, Bryson City 28713																								
Jarrett Memorial																									
Johns Creek	Dillard Wood, Rt. 67, Cullowhee 28723																								
Laurel Branch	Bob Jones, Box 3, Tuckasegee																								
Little Savannah	Verlin Bryson, Rt. 66, Cullowhee 28723																								
Locust Field	Robert Parris, Rt. 1, Sylva 28779																								
Long Branch	Marshal Clayton, Rt. 3, Sylva 28779																								
Lovedale	Joseph Reese, Rt. 3, Sylva 28779																								
Lumberton	Carl Smith, Sylva 28779																								
Moses Creek	Marshal Clayton, Rt. 3, Sylva 28779																								
Mount Pleasant	Hardin Nicholson, Rt. 3, Sylva 28779																								
New Hope	Jack Holcombe, Rt. 1, Box 76, Sylva 28779																								
New Savannah	Tim Norman, Sylva 28779																								
Oak Ridge	James Donaldson, 1124 Allens Creek, Waynesville 28786																								
Ochre Hill	W. L. Sorrells, Rt. 1, Waynesville 28786																								
Old Savannah	Wayne Caldwell, Rt. 1, Sylva 28779																								
Pine Creek																									
Rockdale	Hubert Bryson, Sylva 28779																								
Scotts Creek	Judson Rotan, Rt. 1, Sylva 28779																								
Shoal Creek	Frank Reed, Rt. 1, Whittier 28789																								
Sols Creek	Robert Dean, Candler																								
Speedwell	Wesley Hooper, Cullowhee 28723																								
Sylva, First	Robert Clegg, Box 517, Sylva 28779																								
Tilley Creek	Delos Parris, Box 67, Dillsboro 28725																								
Trout Creek																									
Tuckasegee	Ralph Easterly, Box 36, Tuckasegee																								
Unity	Delos Hoyle, Waynesville 28786																								
Webster	Ray McCall, Waynesville 28786																								
Wilkesdale	Frank Reese, Waynesville 28786																								
Wilmington	Robert Parris, Rt. 1, Sylva																								
Wolf Creek																									
Yellow Mountain	Everett Wilson, Rt. 66, Cullowhee 28723																								
Zion Hill	Ernest Jamison Sr., Sylva 28779																								

44

TABLE B THE SUNDAY SCHOOL 1970		89	90	91	92	93	94	95	96	97	98	99	100	101	102	103	104	105	106	107	108	109	110	
Association	State	Nursery enrollment (3 years and under)	Beginners (4-5) enrollment	Primaries (6-8) enrollment	Juniors (9-12) enrollment	Intermediates (13-16) enrollment	Young People single (17-24) enrollment	Young People married (17-24) enrollment	Adults (25-34) enrollment	Adults (35-64) enrollment	Adults (65 up) enrollment	Extension dept. enrollment	Cradle roll enrollment (home ministry)	Young people away (17-24) enrollment	Fellowship Bible classes enrollment	General officers	Enrollment of mission (s) of church	Total enrollment	Average weekly Sunday School attendance	No. new Sunday School classes organized past year	Church V.B.S. enrollment	Mission V.B.S. enrollment	Total V.B.S. enrollment	
																								JUDSON ROTAN
TUCKASEEGEE		NORTH CAROLINA																						
Box 131		Sylva																						
28779		North Carolina																						
CHURCHES	SUNDAY SCHOOL SUPERINTENDENTS & ADDRESSES																							
Balsam	William Cogdill, Balsam 28707																							
Balsam Grove	Lewis Kilby, Cullowhee 28723																							
Big Ridge	David Pruett, Sylva 28779																							
Black Mountain	William Watson, Cullowhee 28723																							
Buff Creek	Conrad Burrell, P.O. Box, Sylva 28779																							
Calvary	Marshall Bradley, Rt. 2, Sylva 28779																							
Cashiers	Kenneth Fowler, Cashiers 28717																							
Cullowhee	Robert Crawford, Cullowhee 28723																							
Deitz Memorial	Dan Buchanan, Rt. 2, Sylva 28779																							
Dix Creek	Perry Sutton, Dillsboro 28725																							
East Fork	Carl Cabe, Rt. 2, Sylva 28779																							
East Sylva	Alvin Hoyle, Rt. 1, Sylva 28779																							
Fall Cliff	Charlie Childers, Tuckasegee 28783																							
Greens Creek	Allen Garner, Rt. 2, Sylva 28779																							
Hamburg	Edwin Bryson, Glenville 28736																							
Hyatts Chapel	Doyle Gunter, Rt. 1, Whittier 28789																							
Jarrett Memorial	Dennis Wilkey, Rt. 3, Sylva 28779																							
Johns Creek																								
Laurel Branch	Jewell Thompson, Sylva 28779																							
Little Savannah	William Lewis, Sylva 28779																							
Long Branch	Oscar Dalton, Sylva 28779																							
Locust Field	Buddy Brooks, Rt. 1, Sylva 28779																							
Lovedale	C. L. Proffitt, Sylva 28779																							
Lumberton	Ray Houston, Rt. 67, Cullowhee 28723																							
Moses Creek	Harley Cogins, Cullowhee 28723																							
Mt. Pleasant	Roy Crawford, Rt. 1, Waynesville 28786																							
New Hope	Bob Ensley, Rt. 3, Sylva 28779																							
New Savannah	Ralph Tatham, Rt. 2, Sylva 28779																							
Oak Ridge	V. C. Mathis, Tuckasegee 28783																							
Ochre Hill	Guy Sutton, Sylva 28779																							
Old Savannah	Glenn Cabe, Rt. 2, Sylva 28779																							
Pine Creek	John L. Tucker, Cullowhee 28723																							
Rockdale	Clyde Green, Rt. 2, Whittier 28789																							
Scotts Creek	Clyde Vance, Rt. 1, Sylva 28779																							
Shoal Creek	John S. Hyatt, Rt. 1, Whittier 28789																							
Speedwell	Jack Pressley, Rt. 66, Cullowhee 28723																							
Sylva First	James E. Crawford, Rt. 3, Sylva 28779																							
Tilley Creek	Will Webb, Rt. 66, Cullowhee 28723																							
Tuckasegee	Charles Barker, Cullowhee 28723																							
Unity	Robert Carter, Rt. 1, Sylva 28779																							
Webster	Ernest D. Penland Jr., Webster 28788																							
Wilkesdale	Donald Doekins, Sylva 28779																							
Wilmington	C. H. Ashe, Rt. 2, Whittier 28789																							
Yellow Mountain	Quince Hedden, Rt. 66, Cullowhee 28723																							
Zion Hill	Andrew Wilson, Rt. 2, Sylva 28779																							

45



**TABLE C TRAINING UNION 1970**

Association <b>TUCKASEIGEE</b>		112	113	114	115	116	117	118	119	120	121	122	123	124	125	126	127	128	129	130
State <b>NORTH CAROLINA</b>		Nursery (3 years and under) enrollment	Beginners (4-5) enrollment	Primaries (6-8) enrollment	Juniors (9-12) enrollment	Intermediates (13-16) enrollment	Young People single (17-24) enrollment	Young People married (17-24) enrollment	Adults (25-34) enrollment	Adults (35-64) enrollment	Adults (65 up) enrollment	General officers	Enrollment of mission(s) of church	Total ongoing T. U. enrollment	Ongoing average weekly attendance	Number of new unions organized past year	New member orientation-cum. enrollment	Church leader training-cum. enrollment	Member training projects cum. enrollment	Grand total-ongoing & cumulative T.U. enrollment
Associational Training Union Director <b>JOSEPH REECE</b>																				
Address _____ City _____ State _____ Zip _____																				
Rt. 3 _____ City _____ State _____ Zip _____																				
Rt. 3 _____ City _____ State _____ Zip _____																				
CHURCHES	TRAINING UNION DIRECTORS & ADDRESSES																			
Buff Creek	Miss Charlotte Terrell, Sylva 28779	2	3		10															
Calvary	John B. Childers, Sylva 28779																			
Cashiers	Ray Fowler, Cashiers 28717																			
East Fork	Bill Hubbard, Rt. 2, Sylva 28779	3	6	8	6	2	3	3		15	3									
East Sylva	J.D. Robertson, Sylva 28779		9		9					13	6									
Greens Creek	Morrison Green, Rt. 2, Sylva 28779			3	3	5	8	4	4	16	8	3								
Hamburg	Verner Rice, Glenville 28736		4	6	10	4	5	10	12	4										
Jarrett Memorial	Mrs. Nancy Cagle, Rt. 3, Sylva 28779		4	2	8	3	6	3	1	1										
Long Branch	Mrs. Georgia Ensley, Sylva 28779		2	9	5	10	15		20		1	3								
Lovedale	Miss Emily Ashe, Rt. 3, Sylva 28779	2	2	9	12	14	14			14	6	3								
New Hope	Ronnie Bryson, Sylva 28779					7				21		2								
Ochre Hill	Jack Cope, Rt. 1, Sylva 28779		6		6	7	6			35		2								
Old Savannah	Mrs. Bill Green, Rt. 2, Sylva 28779			4	4	8	8			15										
Scotts Creek	Frank Bumgarner, Rt. 1, Sylva 28779		4	6	9	14	8			16		4								
Shoal Creek	Richard Bowen, Whittier 28789		3	3	4					14		2								
Sylva First	Dr. John Chapman, Sylva 28779	2	4	15	16	11	10			24	3	2								
Tuckaseegee	Mrs. Pat Haynie, Tuckaseegee 28783	3	2	4				5	11	11		2								
Webster	Jim Cowan, Rt. 3, Sylva 28779									3		4								
Wilkesdale	Charles Chambers, Sylva 28779		5	10	10	4	4			13		4								
Yellow Mountain			7	10			8			8										

46

**TABLE D CHURCH MUSIC 1970**

Association <b>TUCKASEIGEE</b>		131	132	133	134	135	136	137	138	139	140	141	142	143	144	145
State <b>NORTH CAROLINA</b>		Beginners (4-5) enrollment	Primaries (6-8) enrollment	Juniors (9-12) enrollment	Intermediates (13-16) enrollment	Young People (17-24) single & married enrollment	Adults (25 and over) enrollment	Vocal ensembles enrollment	Band or orchestra enrollment	Instrumental ensembles enrollment	Handbell ringers enrollment	General officers	Enrollment of mission(s) of church	Total music enrollment	Average weekly Church music attendance	No. choirs, ensembles, etc. organized past year
Associational Music Director _____																
Address _____ City _____ State _____ Zip _____																
CHURCHES	MUSIC DIRECTORS & ADDRESSES															
Balsam	James Beck, Hazelwood															
Balsam Grove	Lewis Kilby, Cullowhee 28723		5	17	23	7	10	30								
Big Ridge	Mrs. Cecil Clark, Glenville 28736															
Black Mountain	Libern Dills, Cullowhee 28723															
Buff Creek	Lincoln Shuler, Rt. 1, Sylva 28779			10	7		20							37		
Calvary																
Cashiers	Arlene Pennington, Cashiers 28717															
Cullowhee	Earl Owen, Cullowhee 28723					5	10							15	8	
Deitz Memorial	Grover Deitz, Rt. 2, Sylva 28779		7	8	10	2	5					2		34		
Dix Creek																
East Fork	Coy Deitz, Rt. 2, Sylva 28779															
East Sylva	Ernest Jamison, Jr., Sylva 28779					25	40							65		
Fall Cliff	Loney Watson, Cullowhee 28723													9	8	
Greens Creek	Richard Hall, Rt. 2, Sylva 28779					2	7							44		
Hamburg	Marshall Henson, Franklin 28734					12	12							42		
Hyatts Chapel	Jack Hipps, Rt. 1, Whittier 28789	6	4	6	4	10	10	8						21	12	
Jarrett Memorial	Mike Deitz, Rt. 2, Sylva 28779	3	3	12	6					1		2				
Johns Creek																
Laurel Branch																
Little Savannah	Fred Frizzell, Rt. 3, Sylva 28779															
Long Branch	Harold Wilkey, Rt. 3, Sylva 28779															
Locust Field																
Lovedale	Jim Chitwood, Box 1232, Cullowhee 28723			23	15	7	18							68	25	
Lumberton																
Moses Creek																
Mt. Pleasant	Troy McMahan, Rt. 1, Sylva 28779															
New Hope	Bob Ensley, Rt. 3, Sylva 28779	3	5	3	5	6	8	5	1		4			45	30	
New Savannah																
Oak Ridge																
Ochre Hill	Glenn Blanton, Rt. 1, Sylva 28779															
Old Savannah	Jimmy Ashe, Rt. 1, Sylva 28779															
Pine Creek																
Rockdale																
Scotts Creek	Mrs. Tom Clayton, Sylva 28779							26						26	23	
Shoal Creek	Mrs. E. J. Comstock, Rt. 1, Whittier 28789							18	1					19	12	1
Speedwell																
Sylva, First	James H. Fisher, Sylva 28779	10	9	8	12		25	5						69	48	
Tilley Creek																
Tuckaseegee	Miss Becky Easterly, Tuckaseegee 28783															
Unity	Wade Ammons, Cullowhee 28723															
Webster																
Wilkesdale	Roy Shuler, Cullowhee 28723															
Wilmington																
Yellow Mtn.	Bert Moses, Rt. 66, Cullowhee 28723															
Zion Hill	Bert Webb, Rt. 2, Sylva 28779															

47

TABLE E BROTHERHOOD 1970		79A	79B	80A	80B	81A	81B	82A	82B	83A	83B	84	85	86	87	88
Association <b>TUCKASEIGEE</b> State <b>NORTH CAROLINA</b> Associational Brotherhood Director Address _____ City _____ State _____ Zip _____		Ungraded R. A. chapters	Ungraded R. A. enrollment	Crusaders (9-11) chapters	Crusaders (9-11) enrollment	Pioneers (12-14) chapters	Pioneers (12-14) enrollment	Ambassadors (15-17) enrollment	Ambassadors (15-17) chapters	Total R. A. chapters	Total RA enrollment	Baptist Young Men enrollment	Baptist Men enrollment	Total Men enrolled	Enrollment of mission (s) of church (R.A.'s and Men)	Total enrollment
CHURCHES																
Scotts Creek Sylva First					5								12			125

TABLE F WOMAN'S MISSIONARY UNION 1970		48	49	50	51	52	53	54	55	56	57	58	59	60	61	62	63	64	65	66	67	68	69	70	71	72	73	74	75	76	77	78
Association <b>TUCKASEIGEE</b> State <b>NORTH CAROLINA</b> Associational WMU Director <b>MRS. JUDSON ROTAN</b> Address _____ City _____ State _____ Zip _____ Rt. 1 Sylva North Carolina 28779		Sunbeam Nursery organ. enrollment	Sunbeam Nursery enrollment	Beginner Sunbeam B. organ. enrollment	Primary Sunbeam B. organ. enrollment	Ungraded Sunbeam B. organ. enrollment	Ungraded Sunbeam Band enrollment	Junior GA organizations	Junior GA enrollment	Intermediate GA organ. enrollment	Intermediate GA enrollment	Ungraded GA organizations	Ungraded GA enrollment	High school YWA organ. enrollment	High school YWA enrollment	College YWA organizations	College YWA enrollment	Career girls YWA organ. enrollment	Career girls YWA enrol.	Ungraded YWA organ. enrollment	Ungraded YWA enrollment	WMS organizations	WMS enrollment	Mission(s) of Church (org.)	Mission(s) of Ch. (enrol.)	Grand total organizations	Grand total enrollment	No. mission study groups	No. mission action groups			
CHURCHES																														WMU PRESIDENTS & ADDRESSES		
Cashiers East Sylva Greens Creek Jarrett Mem. Lovedale New Hope Ochre Hill Old Savannah Scotts Creek Shoal Creek Sylva First Wilkesdale Yellow Mtn. Webster Hamburg		Marlene Fowler, Cashiers 28717 Mrs. Edith Bryson, Poplar St., Sylva 28779 Mrs. Darrell Frizzell, Rt. 2, Sylva 28779 Mrs. Dennis Wilkey, Rt. 3, Sylva 28779 Mrs. Ralph England, Rt. 3, Sylva 28779 Gertrude Hooper, Sylva 28779 Mrs. Wade Mills, Rt. 1, Sylva 28779 Mrs. Enley Cope, Rt. 2, Sylva 28779 Mrs. Dand Monteith, Rt. 1, Sylva 28779 Mrs. Richard Bowen Mrs. Robert Clegg Mrs. Franky Dean, 28 Sunrise Park, Sylva 28779 Mrs. Gladys Ridley, Rt. 2, Cashiers 28717																														

TABLE G TOTAL RECEIPTS, LOCAL EXPENDITURES & STEWARDSHIP 1970		15	16				17	18	146	147	148	149	150	151	152	153	154	155
Association <b>TUCKASEIGEE</b> State <b>NORTH CAROLINA</b> Associational Treasurer <b>MRS. CLYDE VANCE</b> Address _____ City _____ State _____ Zip _____ Route 1 Sylva North Carolina 28779		Number of tithers	Budget prom. or emphasis used during past year.				Cooperative Program goal as percent of total budget	Associational missions goal as percent of total budget	Total tithes, all offerings and special gifts other than money	All other receipts	Total receipts	Money borrowed this year	Church staff salaries	Local missions expenditures	Money paid out on new construction past year	Debt retirement	All other local expenditures	Total local expenditures
CHURCHES			TREASURERS AND ADDRESSES															
Balsam Balsam Grove Big Ridge Black Mtn. Buff Creek Calvary Cashiers Cullowhee Deitz Memorial Dicks Creek East Fork East Sylva Fall Cliff Greens Creek Hamburg Hyatts Chapel Jarrett Memorial Johns Creek Laurel Branch Little Savannah Long Branch Locust Field Lovedale Lumberton Moses Creek Mt. Pleasant New Hope New Savannah Oak Ridge Ochre Hill Old Savannah Pine Creek Rockdale Scotts Creek Shoal Creek Speedwell Sylva, First Tillery Creek Tuckaseigee Unity Webster Wilkesdale Wilmont Yellow Mtn. Zion Hill		James M. Beck, Box 351, Hazelwood 28738 Mrs. Hattie Aiken, Cullowhee 28723 Miss Catherine Davis, Big Ridge, Glenville Lehem Dills, Cullowhee 28723 Betty J. Cogdill, Rt. 1, Sylva 28779 Clyde Bryson, Rt. 2, Sylva 28779 Miss Arlene Pennington, Cashiers 28717 Mrs. C. A. Hoyle, Box 446, Cullowhee 28723 Dan Deitz, Rt. 2, Sylva 28779 Mrs. Jarvis Turpin, Rt. 2, Box 163, Whittier 28789 Opal Hubbard, Rt. 2, Sylva 28779 Astor Plemmons, Jr., 12 Falls Circle, Sylva 28779 George McFalls, Rt. 66, Cullowhee 28723 Mrs. Morrison Green, Rt. 2, Sylva 28779 Mrs. Ruth Smith, Glenville 28736 Margaret Gunter, Rt. 1, Whittier 28789 Walter H. Sutton, Box 23, Dillsboro 28725 Mrs. Tom Hopper, Sylva 28779 Mrs. Carolyn Lewis, Rt. 3, Sylva 28779 Elzae Wilkey, Rt. 3, Sylva 28779 Joe Barnes, Sylva 28779 J. D. Parker, Rt. 3, Sylva 28779 Mrs. Felix Hooper, Rt. 67, Cullowhee 28723 Roscoe Hooper, Rt. 67, Cullowhee 28723 Harry Henry, Rt. 1, Sylva 28779 Delois Farmer, Rt. 3, Sylva 28779 Glenn Turpin, Rt. 2, Box 226, Sylva 28779 Edna Mathis, Box 27, Tuckaseigee 28783 Mrs. Lewis Keener, Rt. 1, Sylva 28779 Mrs. Ebb Hall, Rt. 2, Sylva 28779 Mrs. Orville Henderson, Cullowhee 28723 Virgie Brooks, Rt. 2, Whittier 28789 Major Allison, 71 East Main St., Sylva 28779 James Ridgeway, Rt. 1, Whittier 28789 B. E. Pressley, Rt. 66, Cullowhee 28723 Frank Crawford, Old Dillsboro Rd., Sylva 28779 Mary C. Ashe, Rt. 66, Box 71, Cullowhee 28723 Carey Woodring, Tuckaseigee 28783 Mrs. Robert Carter, Rt. 1, Box 168, Sylva 28774 Frances P. Penland, Box 96, Webster 28788 Troy Daves, Sylva 28779 Edna Cook, Rt. 2, Whittier 28789 Roy Hedders, Rt. 66, Cullowhee 28723 Alonzo Woodard, Rt. 2, Box 257, Sylva 28779																



Year	Month	Day	Temperature	Humidity	Wind	Clouds	Pressure	Notes
1912	Jan	1	45	75	SW 10	Partly Cloudy	30.0	Clear morning, light rain in evening.
1912	Jan	2	40	80	SW 15	Overcast	29.8	Heavy rain all day.
1912	Jan	3	45	70	SW 10	Partly Cloudy	30.1	Clear, mild day.
1912	Jan	4	50	65	SW 10	Partly Cloudy	30.2	Clear, mild day.
1912	Jan	5	55	60	SW 10	Partly Cloudy	30.3	Clear, mild day.
1912	Jan	6	60	55	SW 10	Partly Cloudy	30.4	Clear, mild day.
1912	Jan	7	65	50	SW 10	Partly Cloudy	30.5	Clear, mild day.
1912	Jan	8	70	45	SW 10	Partly Cloudy	30.6	Clear, mild day.
1912	Jan	9	75	40	SW 10	Partly Cloudy	30.7	Clear, mild day.
1912	Jan	10	80	35	SW 10	Partly Cloudy	30.8	Clear, mild day.
1912	Jan	11	85	30	SW 10	Partly Cloudy	30.9	Clear, mild day.
1912	Jan	12	90	25	SW 10	Partly Cloudy	31.0	Clear, mild day.
1912	Jan	13	95	20	SW 10	Partly Cloudy	31.1	Clear, mild day.
1912	Jan	14	100	15	SW 10	Partly Cloudy	31.2	Clear, mild day.
1912	Jan	15	105	10	SW 10	Partly Cloudy	31.3	Clear, mild day.
1912	Jan	16	110	5	SW 10	Partly Cloudy	31.4	Clear, mild day.
1912	Jan	17	115	0	SW 10	Partly Cloudy	31.5	Clear, mild day.
1912	Jan	18	120	0	SW 10	Partly Cloudy	31.6	Clear, mild day.
1912	Jan	19	125	0	SW 10	Partly Cloudy	31.7	Clear, mild day.
1912	Jan	20	130	0	SW 10	Partly Cloudy	31.8	Clear, mild day.
1912	Jan	21	135	0	SW 10	Partly Cloudy	31.9	Clear, mild day.
1912	Jan	22	140	0	SW 10	Partly Cloudy	32.0	Clear, mild day.
1912	Jan	23	145	0	SW 10	Partly Cloudy	32.1	Clear, mild day.
1912	Jan	24	150	0	SW 10	Partly Cloudy	32.2	Clear, mild day.
1912	Jan	25	155	0	SW 10	Partly Cloudy	32.3	Clear, mild day.
1912	Jan	26	160	0	SW 10	Partly Cloudy	32.4	Clear, mild day.
1912	Jan	27	165	0	SW 10	Partly Cloudy	32.5	Clear, mild day.
1912	Jan	28	170	0	SW 10	Partly Cloudy	32.6	Clear, mild day.
1912	Jan	29	175	0	SW 10	Partly Cloudy	32.7	Clear, mild day.
1912	Jan	30	180	0	SW 10	Partly Cloudy	32.8	Clear, mild day.
1912	Jan	31	185	0	SW 10	Partly Cloudy	32.9	Clear, mild day.

Minutes \* Church Histories \* Church Directories \* Book of Reports \* Sermon Books \* Genealogies



Southern Baptist Press  
Wolfe City, Texas