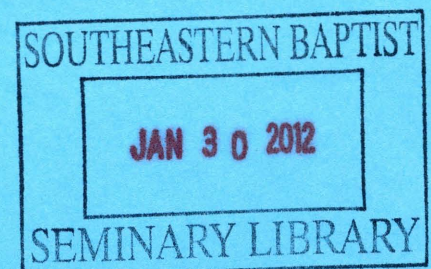


**2011
Annual Minutes
of the
Tuckasegee
Baptist Association**

**One Hundred Eighty-second
Annual Session**

**Moses Creek Baptist Church
Thursday, October 13, 2011**

**Liberty Baptist Church
Friday, October 14, 2011**



1961. 11. 2. 1961.

2011 BOOK OF REPORTS

for the One Hundred Eighty-second Annual Meeting

of the

TUCKASEIGEE BAPTIST ASSOCIATION

**Moses Creek Baptist Church
Thursday, October 13, 2011**

and

**Liberty Baptist Church
Friday, October 14, 2011**

**Josh Hyde, Moderator
Johnny Lee, Vice Moderator
Gracella Morris, Clerk**

I press toward the mark for the prize of the high calling of God in Christ Jesus. Philippians 3:14

2011 BOOK OF REPORTS

for the One Hundred Eighty-second Annual Meeting

of the

TUCKASEE BAPTIST ASSOCIATION

Atossa Creek Baptist Church
Thursday, October 13, 2011

and

Liberty Baptist Church
Friday, October 14, 2011

John Hyde, Moderator
Johnny Lee, Vice Moderator
Gonzella Morris, Clerk

This book contains the report for the year of the high calling of Christ in the Church, and the Philippines.



Dedicated in Honor of Hazel Monteith

The 2011 Annual Minutes are dedicated in honor of Hazel Lola Monteith. She was born on November 1, 1923 at Balsam, North Carolina.

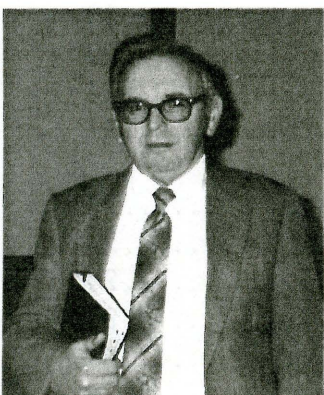
Hazel went to Tuckaseegee Elementary School grades 1-3, then Cullowhee and graduated Cullowhee High School. After high school, she went to business school in Del Rio, Texas.

She married Olin C. Monteith and they had two children. - Jerry Monteith of Cobden, Illinois and Pam Crane of Summerfield, North Carolina. She has two grandsons: Matthew Monteith, a college freshman in Chicago, Illinois and Jackson Crane, a sophomore in college at UNC Charlotte.

Hazel has always been active in the church. She has served as Sunday School teacher, assistant pianist, church clerk and as a member of the building and grounds committee. One of her favorite times was when she taught in the Junior Department and had a Junior choir, taking them to sing at other churches. She and Olin also had many, many ball games in the field behind their house.

She has always been involved with the WMU and supported missions. Her interest in missions took her to Brazil on a mission trip when John Reid was Director of Missions in the Tuckaseegee Association. She has served as different officers in the association and on committees.

Hazel is presently a member of the choir at Lovedale, pianist for the nursing home ministry, assistant Sunday School teacher and is responsible for sending birthday, sympathy and get well cards to the Lovedale members.



Dedicated in Honor of Rev. Charles Carnes

The 2011 Annual Minutes are dedicated in honor of Rev. Charles Carnes. Charles "Sunny" Carnes was born on July 8th 1935. He married his wife, Eula, on March 8th, 1958. They have two children, Billy and Erika. They have five grandchildren and four great-grandchildren.

Charles accepted Christ as his Savior in 1958 at Long Branch Baptist Church. He then announced his call to preach in 1966. He became the pastor of Locust Field Baptist Church in August of 1971 where he remained until his retirement in 2007.

Between 1973 and 1974 Charles had the opportunity to baptize 23 people. That was the most baptisms of any church during that year. In addition to pastoring for so many years Charles also has taken the time to teach several Bible studies in churches throughout our area.



Dedicated in Honor of Rev. T. Walter Middleton

The 2011 Annual Minutes are dedicated in honor of Rev. T. Walter Middleton. He was born in 1918.

Walter held several leadership roles in the association before becoming the Director of Missions of Tuckaseegee Baptist Association. He held this position from 1968 until 1976. He was the minister for several churches in this area and helped in a lot of revivals.

He is an outstanding storyteller and has written several published books about his experiences and stories he has heard throughout his life about Western North Carolina.

Walter Middleton survived more than 3-1/2 years of imprisonment by the Japanese during World War II. Starting with the Bataan Death March (a forced march of 70,000 American and Filipino prisoners of war captured by the Japanese in the Philippines), followed by a China Sea crossing in the Hell Ships, and finally liberation from a slave labor camp in Mukden, Manchuria, he saw humanity at its worst and at its best. His salvation from his ordeal was his Christian upbringing, and he turned to God as he had been taught all his life.

Table of Contents

Dedication, In Honor of Mrs. Hazel Monteith	
Dedication, In Honor of Rev. Charles Carnes	
Dedication, In Honor of Rev. T. Walter Middleton	
Associational Directory	1
Order of Business, First Session	3
Order of Business, Second Session	4
Proceedings 182nd Annual Meeting	5
Messengers 182nd Annual Meeting	9
Committee Reports	
Committee on Committees Report	11
Nominating Committee Report	12
Executive Committee	13
Place and Preacher	16
Changes in the Churches	16
Associational Calendar of Activities, 2011 - 2012	17
Program Reports	
Director of Missions	18
Historical Report	19
Music	20
Senior Adult	24
Woman's Missionary Union	21
Stewardship Reports	
Financial Report, Proposed Budget, 2011-2012	22
Financial Information Summary	23
Balance Sheet as of September 28, 2011	24
Memorials	25
Historical Table	26
Local Agency Reports	
George W. Truett Baptist Camp and Conference Center	30
United Christian Ministries	31
MedWest Carolinas Health Care Chaplaincy Services	32
Institutional Reports	
Baptist Children's Homes of NC	33
NC Baptist Foundation	35
The NC Baptist Hospitals, Inc.	36
GuideStone Financial Resources of SBC (Annuity Board)	38
Biblical Recorder	39
Book-Link International, Inc.	40
Articles of Incorporation	42
By-Laws	44

Digest of Church Profiles	52
--	----

Statistical Tables

Summary	53
Baptism	55
Sunday School	57
Discipleship Training (None Reported)	
Music Ministry (None Reported)	
Missions Involvement	59
Missions Education	61
General Financial Information	63
Missions Financial Information	65
Congregational & Member Information	67

Directories

Pastors	73
Ordained Ministers	73
Ministers of Music	74
Ministers of Youth	75
Ministers of Children	75
Ministers of Preschool	75
Church Clerks	76
Representatives on Associational Executive Board	77
Chairmen of Deacons	77
Sunday School Directors	78
Discipleship Training Directors	78
Church Treasurers	79
Church Secretaries	80
Women's Missionary Union Directors	81
Brotherhood Directors	81
Church Pianists	82
Church Organists	82
Church Guitarists	82
Church Banjo Players	82

ASSOCIATIONAL DIRECTORY 2011-2012

STAFF

Director of Missions, Rev. Gerald Morris	
85 Blackwood Rd, Cullowhee, NC 28723	506-0356
Secretary, Mrs. Gracella Morris	
85 Blackwood Rd, Cullowhee, NC 28723	507-1834

GENERAL OFFICERS

Moderator, Rev. Keith Dean	
31 Zenith Drive, Sylva, NC 28779	586-6170
Vice-Moderator, Rev. Johnny Lee	
334 Allman Drive, Franklin, NC 28734	586-2631
Clerk, Mrs. Gracella Morris	
85 Blackwood Rd, Cullowhee, NC 28723	507-1834
Assistant Clerk, Mrs. Betty Greene	
388 Brooks Branch Rd., Sylva, NC 28779	586-9759
Treasurer, Mrs. Jennie Miller	
35 Tanglewood Dr, Whittier, NC 28789	586-6392
Assistant Treasurer, Mr. Arthur Stephens	
95 Genesis Trail Drive, Sylva, NC 28779	586-6479
Historian, Mrs. Pat Dietz	
P O Box 222, Webster, NC 28788	586-5158
Parliamentarian, Rev. Clemmey Queen	
220 Frosty Ridge Rd., Sylva, NC 28779	586-8616
Assistant Parliamentarian, Roy Dalton	
374 South Piney Mtn, Whittier, NC 28789	586-6638

TRUSTEES

Mr. Arnold Buchanan	
PO 1219, Cashiers, NC 28717	293-3923
Mr. Bob Parker	
P O Box 2343, Sylva, NC 28779	586-4445
Mr. Carlos Gunter	
179 Bidwell Rd., Whittier, NC 28789	497-7687

REPRESENTATIVES

GuideStone (Annuity Board), Rev. Cecil Frady	
765 Fred Smith Road, Tuckasegee, NC 28783	293-9677
Baptist Childrens' Homes of N.C., Rev. Keith Dean	
31 Zenith Drive, Sylva, NC 28779	586-6170
Truett Camp, Mr. Caleb Parham	
1757 East Fork Rd, Sylva, NC 28779	586-5011
S.W.A.R.M., Ms. Karen Burnette	
928 Rufus Robinson Rd., Sylva, NC 28779	421-1965
Baptist Hospitals of NC, Rev. Cecil Frady	
765 Fred Smith Road, Tuckasegee, NC 28783	293-9677

ASSOCIATIONAL PROGRAM LEADERS

Sunday School Director, Mr. Arnold Brooks P O Box 836, Sylva, NC 28779	586-8386
Vacation Bible School Director, Ms. Karen Burnette 928 Rufus Robinson Rd, Sylva, NC 28779	421-1965
Discipleship Director, Mr. Steve Lillard 384 Billy Cove Rd., Sylva, NC 28779	631-9650
Music Director, Mr. Eddie Potts 314 Cardinal Dr., Sylva, NC 28779	586-4258
Musician, Mrs. Betty Greene 388 Brooks Branch Rd., Sylva, NC 28779	586-9759
Deacons' Chairman Brotherhood Director, Mr. Greg Stewart 78 Flying Squirrel Ridge, Whittier, NC 28789	316-7576
Youth Director, Rev. Cory Boone 5 Wild Rose Drive, Whittier, NC 28789	631-0676
Senior Adult Director, Ms. Carolyn Morris 86 Happy Valley Road, Sylva, NC 28779	631-0043
Singles Ministry Director, Mrs. Katherina DeRico 91 Garnett Rd, Sylva, NC 28779	586-5288
Stewardship Director, Rev. Mike Moore 95 Bidwell Rd., Whittier, NC 28789	497-9860
WMU Director, Ms. Karen Burnette 928 Rufus Robinson Rd., Sylva, NC 28779	421-1965

Moving Forward in Jesus' Name

I press toward the mark for the prize of the high calling of God in Christ Jesus. Philippians 3:14

TUCKASEIGEE BAPTIST ASSOCIATION ONE HUNDRED EIGHTY-SECOND ANNUAL MEETING

ORDER OF BUSINESS FIRST SESSION

Thursday, October 13, 2011

Moses Creek Baptist Church

Gerald Morris, Moderator Pro Tem

4:30 pm	Supper	Moses Creek Baptist Church
6:00 pm	Convene & Welcome	Moderator Pro Tem

WORSHIP

Congregational Singing	Rev. Emery Brooks
Special Music	Moses Creek Baptist Church
Scripture & Sermon	Rev. Mike Gunter

BUSINESS

6:45 pm	Declaration of the 182nd Annual Session	Moderator Pro Tem
	Adoption of Order of Business	Moderator Pro Tem
	Recognition of New Pastors & Visitors	Moderator Pro Tem
	Appointment of Committee on Committees & Resolutions Committee	Moderator Pro Tem
6:55 pm	Congregational Singing	Rev. Emery Brooks

REPORTS

7:00 pm	Director of Missions Report	Rev. Gerald Morris
	Music	Rev. Emery Brooks
	Senior Adults on Mission	Carolyn Morris
	Baptist Children's Homes	Rev. Lewis Smith

COMMITTEES

7:35 pm	Memorials Committee	Virginia Pangle and Laura Brown
	Stewardship Committee	Rev. Mike Moore
	Committee on Committees	Moderator Pro Tem
	Nominating Committee	Keith Dean
	Place & Preacher Committee	Jason Watson
	Miscellaneous	

MISSION REPORTS

8:05 pm	Mission Trips	Ochre Hill, Cashiers, and Webster Baptist Churches
8:35 pm	Benediction	Coleman Smith

Moving Forward in Jesus' Name

I press toward the mark for the prize of the high calling of God in Christ Jesus. Philippians 3:14

TUCKASEIGEE BAPTIST ASSOCIATION ONE HUNDRED EIGHTY-SECOND ANNUAL MEETING

ORDER OF BUSINESS SECOND SESSION

Friday, October 14, 2011

Liberty Baptist Church

Gerald Morris, Moderator Pro Tem

4:30 pm	Supper	Liberty Baptist Church
6:00 pm	Convene & Welcome	Moderator Pro Tem
6:05 pm	Scripture & Prayer	Keldon "Gene" Austin
	Special Music	Liberty Baptist Church
	Congregational Singing	Rev. Emery Brooks

REPORTS

6:15 pm	WMU	Karen Burnette
	Medwest Chaplaincy Program	Ron Allen
	Truett Baptist Camp	Tim Roberson
	United Christian Ministries	Kathy Cross
	The Gideon's International	Arthur Stephens
	Book-Link	Olin Williams
	GuideStone Financial Resources (Annuity Board)	Moderator Pro Tem
	Fruitland Baptist Bible Institute	Rev. J. D. Grant
7:00 pm	Congregational Singing	Rev. Emery Brooks
	Registration	Moderator Pro Tem

MISSION REPORTS

7:05 pm	Mission Trips	Cashiers, Faith and Long Branch Baptist Churches
---------	---------------------	--

COMMITTEES

7:40 pm	Executive Committee	Moderator Pro Tem
	Stewardship	Rev. Mike Moore
	Resolutions Committee	Rev. Scotty Patrick

WORSHIP

7:50 pm	Congregational Singing	Rev. Emery Brooks
	Special Music	Promised Land Baptist Church
	Scripture & Sermon	Rev. Kent Lowdermilk
8:30 pm	Closing Congregational Song	Rev. Emery Brooks
	Benediction	Keldon "Gene" Austin

PROCEEDINGS
182nd ANNUAL MEETING
FIRST SESSION, THURSDAY, OCTOBER 13, 2011

1. Moses Creek Baptist Church hosted the first session of the 182nd Annual Meeting of the Tuckaseegee Baptist Association. A delicious meal was served at 4:30 p.m. A total of 83 present: 63 Messengers and 20 visitors representing 19 churches.
2. Rev. Gerald Morris, Director of Missions, welcomed everyone.
3. Rev. Emory Brooks led the congregation in singing "Amazing Grace".
4. Rev. Mike Gunter welcomed everyone to Moses Creek Baptist Church. He brought scripture and sermon from Matthew 16 with an emphasis that we are to unified in sharing Jesus.
5. The 182nd Annual Meeting was called to order by Rev. Gerald Morris. Roy Dalton, parliamentarian moved that Gerald be the Moderator Pro tem. for the annual meeting. It was seconded by Keith Dean and approved.
6. The agenda was approved as presented.
7. No new new pastors and visitors were recognized at the Associational Meeting.
8. Gerald pointed out the appointment of Committee on Committees and Resolutions Committee on page 9 by the moderator.
9. Rev. Emory Brooks led the congregation in singing, "Are You Washed in the Blood".

REPORTS

10. **Director of Missions** - Rev. Gerald Morris gave his report as Director of Missions. It was located on page 3. This year has been a time of renewal of the missions, worship, training and fellowship opportunities in the association. He lead two mission trips to Book-Link in Kentucky. At the Spring Worship Rally 116 people were present with 14 churches represented. The association also had a Youth Rally with about 50 present. The Marriage Enrichment Conference had 30 adults with 20 children in childcare. Cashiers Baptist Church's puppet team presented their puppet show for the children. The Youth Lock-in had 21 children with 4 churches represented. The training opportunities were expanded this year to include a Church Leadership Training (42 present with 18 churches represented), a Ministerial Tax and Financial Seminar led by GuideStone and an informational meal provided by the Baptist Hospitals of NC. He then presented a certificate to Carolyn Morris from Buff Creek Baptist Church for being the Top Per Capita Giving Church in the Tuckaseegee Baptist Association to the 2010 Lottie Moon Christmas Offering, a certificate to Rev. Scotty Patrick from Cashiers Baptist Church for being the top Giving Church to the Lottie Moon Christmas Offering and a framed certificate to Scott Carter from Webster Baptist for the 2010 largest increase in giving to the Cooperative Program.
11. **Music** - Rev. Emory Brooks gave the Music report listed on page 4. He said 22 churches were represented at the association's annual singing on March 20th. 776 people participated and they were able to raise \$2,963.33 for the children at Baptist Children's Homes of NC. Both of these numbers were increased from last year. Added this year was a Fall Singing on September 18th. 11 churches were represented. The total attendance was 310 and \$1,144.30 was collected for the Baptist Children's Homes. Emory encouraged everyone to keep the second Sunday in October open for the Fall singing next year. He said it had been an honor to serve as the Music Director. He would no longer be serving as the music director.
12. **Senior Adults on Mission** - Carolyn Morris presented her report on page 6. Four churches have been represented this year at the monthly Senior adults meetings. They are meeting the

fourth Monday of each month at the Baptist Center with a covered dish lunch. They plan to partake in mission projects. They have adopted 6 people from Skyland Personal Care Home to treat with special activities throughout the year. She challenged the senior adults to not let the young people do more than they do.

13. **Baptist Children's Homes** - Rev. Lewis Smith reported that they are still in operation because they have not forgotten the Bible and they still share the gospel of our Lord and Savior Jesus Christ. Lewis also thanked the association for their support of the Children's Homes through the both singings. He said that 74 have received Christ in the last year and that 70% of their admissions are unchurched.

COMMITTEES

14. **Memorials** - Virginia Pangle and Laura Brown read the names of members from each church that had passed away during the past year. They also lit candles. The minutes will be dedicated this year in honor of Hazel Monteith of Lovedale Baptist Church, Rev. Charles Carnes of Long Branch Baptist Church and Rev. Walter Middleton, former Director of Missions. Rev. Clemmey Queen lead in prayer.

15. **Stewardship** - Rev. Mike Moore presented the proposed 2011-2012 budget to be voted on during the second session. The budget is on page 7.

16. **Committee on Committees** - Their report was on page 9. It was approved.

17. **Nominating Committee** - Keith Dean presented their report on page 10 to be accepted for 2011-2012. No further nominations were made and the motion carried.

18. **Place and Preacher Committee** - Their report was presented on page 12 by Jason Watson. It was approved with no opposition. Next year's annual meetings will be at Lovedale Baptist and Rockdale Baptist. Rev. Ray Knowles and Rev. Charles Lee will be preaching.

19. **Miscellaneous Business** - Gerald said that 60 messengers and 19 visitors were there from 19 churches.

MISSIONS

20. **Ochre Hill Baptist** - Kim Fiskeaux and Sydney Henson presented a Youth on Mission report of their trip to Wheeling, West Virginia. They had 6 youth and 9 adults that broke up into two teams. Team 1 cleaned an elderly man's house and helped him move. Team 2 went to a Group Home and painted three bedrooms and cleaned. The teams also served in a Soup Kitchen downtown. They served 204 homeless people and got to share the Gospel. God was with them and had provided all the supplies they would need to work

21. **Cashiers Baptist** - Carlton Fowler spoke about the disaster relief that 12 men from their church did in Mountain City, Tennessee. This place had been hit by tornadoes. They were able to break up into two groups also. They were so happy to not only plant seeds on this trip to see someone get saved.

22. **Webster Baptist** - Scott Carter told about their mission trip to Los Cedros and Jinotega, Nicaragua. They did multiple projects while there: did a Vacation Bible School, did door to door evangelism, performed skits, hosted a hot dog feast, hosted a women's Bible study and gave out Spanish Bibles, and put on pantomime clowning shows. They presented 2 new bikes (which is considered a main type of transportation.) They hope to go back next year to the same area. The concentrated time of sharing with the mission group from the church is such a blessing.

23. **New Hope Baptist** - Greg Stewart and Grace Morris talked about their trip to Tennessee to help the people who were hit by tornadoes. They had 11 adults and 19 youth go on this trip.

24. Coleman Smith of Moses Creek Baptist Church led in the Benediction.

SECOND SESSION, FRIDAY, OCTOBER 14, 2011

1. Liberty Baptist Church hosted the second session of the 182nd Annual Meeting of the Tuckaseegee Baptist Association. A delicious meal was served at 4:30 p.m. A total of 93 present: 64 Messengers and 29 visitors representing 19 churches.
2. Rev. Gerald Morris, pro-tem moderator, welcomed everyone and called the meeting to order.
3. Gene Austin welcomed everyone to Liberty Baptist Church and read Psalms 100. Liberty's choir sang.
4. Rev. Emory Brooks led the congregation in singing "Revive Us Again."

REPORTS

5. **WMU** - Karen Burnette reported that the WMU had stepped up to the challenge to Pray More, Give More and Go More. Her report is on page 5. In addition to these activities the WMU provided lunch and childcare for the Marriage Retreat at La Primera Iglesia Bautista de Amor. They provided a luncheon to show their appreciation to the pastors, made 47 dresses for girls in Africa, have a goal to make 70 diapers, provided 37 bags of candy for the Red Boxes, and provided school supplies for 6 kids at El Centro. Look to the future newsletter for more WMU activities.
6. **Medwest Chaplaincy Program** - Ron Allen said that the chaplaincy program has greatly changed since it was first started. He has 35 volunteer chaplains at Sylva. He supervises one other worker. They have 13 volunteers in Haywood. He encouraged each church to show their appreciation for their clergy and to support this program through prayers and funds.
7. **Truett Baptist Camp** - Tim Robertson presented his report on page 21.
8. **United Christian Ministries** - Kathy Cross presented her report on page 22. They have an average base of 800 people being served. They have added a new enlarged food pantry. They appreciate any donations through money, food, blankets, coats, dish detergent, diapers, etc. They plan on providing Thanksgiving Dinner for 220 families this year. Volunteers are also needed.
9. **The Gideon's International** - Arthur Stephens thanked each church for their support to purchase scriptures. They have 189,000 business professionals in 194 countries working to distribute these scriptures to win the Lost. 100% of the funds collected goes to purchase scriptures.
10. **Book-Link** - Mr. Olin Williams presented his report about the Biblical materials packed and shipped overseas. He encouraged everyone to pray and see if God has a place for you in this process. He passed out a report to each person there.
11. **Annuity Board (GuideStone)** - Gerald said their report was on page 23.
12. **Fruitland Baptist Bible Institute** - Rev. J. D. Grant told that it was started in 1946 as a school for Mountain Preachers. In spite of the economy they continue to grow. They are in the process of starting a program that gives a Biblical Christian world view for laymen and preachers. They have a satellite program in Monroe, NC and have two Hispanic satellite campuses in the state. One of the new Hispanic classes is being offered at the Tuckaseegee Baptist Center.
13. Rev. Emory Brooks led the congregation in singing, "There's Power in the Blood".
14. Gerald reported that there were 59 messengers, 32 visitors and 18 churches represented. (This is a little different after Gracella got back to the office and compared more carefully all the attendance sheets.)

MISSIONS

15. **Cashiers Baptist Church** - Mr. Lewis Langford reported on their trip to Romania. With the help of the people in the village, they were able to build a church in 7 ½ days. The inside should be done by November. A dedication service is planned for Nov. 13th.

16. **Faith Baptist Church** - Pat Dietz reported that Faith has built five ramps this year. They also built a platform deck for the Zipline at Riverside Cove Camp. Pat and Raymond went to Vermont with another group to repair chimneys. She spoke about the partnership between NC and Vermont. She said they had a project to reach the street children there in Vermont. Would anyone be willing to mail cards and send coupons for McDonalds for the director to use there to reach out to the children? We all need to sacrifice our lives to go and reach out to others for Christ.

17. **Long Branch Baptist Church** - Hannah and Lee Lillard talked about the many youth projects that their church has started and been involved in: food drive, shampoo drive for UCM, making 1st Aid Kits for Samaritan's Relief, helping send supplies with Webster to Nicaragua, helping neighbors in need and collecting loose change (\$107.11) for the Dempseys in Peru. The youth have big dreams to help.

COMMITTEES

18. **Executive Committee** - Gerald pointed to the executive committee report beginning on page 13. It is a summary of the executive meetings held throughout the year.

19. **Stewardship Committee** - Rev. Mike Moore moved that the 2011-2012 budget presented the previous session be approved. Page 7. He said that the best is yet ahead as long as we are doing God's will. No discussion followed and it passed.

20. **Resolutions Committee** - Rev. Scotty Patrick presented the following resolution.

Whereas Moses Creek and Liberty Baptist Churches have hosted meetings, provided abundant meals, and extraordinary hospitality to messengers of the Tuckaseegee Baptist Association, and Whereas Rev. Mike Gunter presented (and we believe also Rev. Kent Lowdermilk will present) motivating, encouraging, and uplifting messages, and

Whereas associational and convention-wide representatives have given informative and challenging reports, and

Whereas Rev. Emory Brooks has so capably led us in worshipful singing, and

Whereas Rev. Gerald Morris has so efficiently presided over these sessions and other meetings, and

Whereas our Director of Missions, Rev. Gerald Morris, has brought wise leadership that strongly promotes missions and unity, and

Whereas, our faithful and resourceful associational clerk, Gracella Morris, serves beyond her call of duty, and Whereas, our committee officers and members have given of time and energy to serve the association well. Be it therefore resolved that we extend sincere appreciation to all who have served to honor our wonderful Savior Jesus Christ. Bro. Moderator, I move that this well deserved resolution of appreciation be approved. It was approved.

21. Rev. Emory Brooks led the congregation in singing, "Nothing But the Blood".

22. Promised Land Baptist Church presented the special music.

23. Rev. Kent Lowdermilk, pastor from Little Savannah Baptist, gave the Scripture and sermon. He spoke from 1 Chronicles 4:9-10.

24. Keldon "Gene" Austin closed the meeting with the Benediction.

2011 Messengers List

Big Ridge: Not represented

Buff Creek Baptist: Carolyn Morris, Frances Givens

Calvary: Laura Brown, Leonard England

Cashiers: Rev. Scotty Patrick, Ginger Patrick, Tom Bryson, Louis Langford, Carlton Fowler

Cullowhee Valley: Not represented

Dicks Creek: Not represented

East Fork: Rev. Dennis Burrell, Katie Wood

El Centro Del Señor: Not represented

Faith: Pat Dietz, Raymond Dietz, John Brooks, Rev. J. D. Grant

Greens Creek: Not represented

Hamburg: Not represented

Hyatts Chapel: Not represented

Jarrett Memorial: Not represented

La Primera Iglesia Bautista de Amor: Not represented

Liberty: Gene Austin, Emma Bryson

Lighthouse: James Roper, Fannie Roper, Gay Nell Bailey, Helen Milsaps

Little Savannah: Rev. Kent Lowdermilk, Kenny Frizzell, Jimmy Grissom

Locust Field: Betty Greene, Virginia Pangle, Waymon Pangle

Long Branch: David Dalton, Roy Dalton, Betty Dalton, Lee Lillard, Hannah Lillard

Lovedale: Rev. Mike Farmer, Hazel Monteith, Ron Gass, Karen Gass, Odell Haskett, Gracella Morris, Gerald Morris

Moses Creek: Rev. Mike Gunter, Arthur Stephens, Jason Watson, Max Cook, Roger Stephens

Mt. Pleasant: Not represented

New Hope: Rev. Mike Moore, Arnold Brooks, Steven Buchanan, Donal Shuler, Bill McClure, Walter Young, Don Morrison, Margie Morrison, Jill Breedlove, Patrick Breedlove, Greg Stewart

New Savannah: Rev. Ray Knowles, Ruth Knowles, John Buchanan, Linda Buchanan

Ochre Hill: Nancy Nichols, Kim Fiskeaux, Dick Nichols, Sydney Henson

Old Savannah: Not represented

Pine Creek: Not represented

Promised Land: Rev. Larry Bryson

Rockdale: Rev. Ray Fox, Ella Mae Fox, Jennie S. Miller, Kenneth Miller, Bessie Brook, Eula Mae Denny, Doug Denny

Scotts Creek: Audrey Ward, Mrs. Frankie Ward

Shoal Creek: Not represented

Sols Creek: Not represented

Speedwell: Michael Coggins, Dennis Coggins, Rev. Clemmey Queen, Carley Queen

Unity: Not represented

Webster: Rev. Scott Carter

Wilkesdale: Keith Dean, Rev. Terry Jenkins, Alvin Henson

Committee on Committees Report 2011-2012

Articles & By-Laws

- 12 David Dalton, Long Branch
- 13 Cance Carnes, Hyatts Chapel
- 14 Earl Hooper, New Hope

Associational Missions Development Council

- 12 Linda Gunter, Hyatts Chapel
- 13 Betty Green, Locust Field
- 14 Virginia Pangle, Locust Field

Building & Grounds

- 12 Arthur Stephens, Moses Creek
- 12 Gary Buchanan, Webster
- 13 Dale Buchanan, Long Branch

Credentials

- 12 Betty Green, Locust Field
- 12 Avery Brown, Calvary
- 13 Cecil Frady, Lovedale - Chair
- 13 Arthur Stephens, Moses Creek
- 14 Clemmey Queen, Speedwell

Evangelism

- 12 Clemmey Queen, Speedwell
- 13 Jason Buchanan, Locust Field
- 13 Shane Roughton, Lighthouse
- 13 Justin Hunt, Speedwell
- 14 Scotty Patrick, Cashiers

Stewardship

- 12 Gail Allen - Rockdale
- 13 Mike Moore, New Hope - Chair
- 13 Mike Farmer, Lovedale
- 13 Tim Hawkins, Scotts Creek
- 14 Cindy Rigdon, Faith
- Jennie Miller, Treasurer

Memorials

- 12 Virginia Pangle, Locust Field
- 13
- 14 Laura Brown, Calvary

Nominating

- 12 Douglas Denny, Rockdale
- 12 Earl Hooper, New Hope
- 13 Bob Parker, Lovedale
- 13 Keith Dean, Wilkesdale
- 14 Katie Wood, East Fork
- 14 Arnold Brooks, New Hope
- 14 Karen Burnette, Little Savannah

Order of Business

- 12 Gracella Morris, Lovedale
- 13 Laura Brown, Calvary
- 14 James Roper, Lighthouse

Ordination

- 12 Dale Roberts, Hyatt's Chapel
- 12 Kent Lowdermilk, Little Savannah
- 12 Avery Brown, Calvary
- 13 Mike Moore, New Hope
- 13 Ray Fox, Rockdale

Personnel

- 12 Don Shuler, New Hope
- 12 Terry Jenkins, Wilkesdale
- 12 Jason Buchanan, Locust Field
- 13 Allen Garner, Greens Creek
- 13 Justin Hunt, Speedwell
- 14 Kent Moore, Hyatts Chapel
- 14 Virginia Pangle, Locust Field

Place & Preacher

- 12 Jason Watson, Moses Creek
- 13 Steve Lillard, Long Branch
- 14

Respectfully Submitted,
Justin Hunt, Speedwell
Donal Shuler, New Hope
Rob Sutton, Ochre Hill

Appointed Committee 2011-2012

Resolutions Committee

- Scotty Patrick, Cashiers
- Laura Brown, Calvary
- James Roper, Lighthouse

Committee on Committees

- Justin Hunt, Speedwell
- Donal Shuler, New Hope
- Rob Sutton, Ochre Hill

Nominating Committee Report, 2011-2012

General Officers

Moderator	Keith Dean
Vice Moderator	Johnny Lee
Clerk	Gracella Morris
Assistant Clerk	Betty Greene
Treasurer	Jennie Miller
Assistant Treasurer	Arthur Stephens
Historian	Pat Dietz
Parliamentarian	Clemmey Queen
Assistant Parliamentarian	Roy Dalton

Program Leaders

Sunday School Director	Arnold Brooks
Discipleship Director	Steve Lillard
Music Director	Eddie Potts
Musician	Betty Greene
Trustees	Arnold Buchanan (12) Bob Parker (13) Carlos Gunter (14)
Deacons' Chairman	
Youth Director	Cory Boone
Stewardship Director	Mike Moore
Vacation Bible School Director	Karen Burnette
Brotherhood Director	Greg Stewart
Senior Adult Director	Carolyn Morris
Singles Ministry Director	Katherina DeRico

Associational Representatives

Truett Camp	Caleb Parham
Baptist Children's Homes of NC	Keith Dean
GuideStone Financial Services, Inc. (Annuity Board)	Cecil Frady
S.W.A.R.M.	Karen Burnette
NC Baptist Hospital, Inc.	Cecil Frady

Respectfully submitted by:

Brad Stillwell, Chairperson

Bob Parker

Randy Crawford

Douglas Denny

Katie Wood

Earl Hooper

Keith Dean

Gerald Morris, Ex Officio

Executive Committee Report

Gracella Morris, Clerk

October 4, 2010 - The association met at the Baptist Center. Interim Director of Missions, Rev. Gerald Morris presided. 15 executive committee members represented 11 churches. Emery Brooks led the group in singing "*Love Lifted Me*". Mike Gunter, pastor of Moses Creek Baptist Church, gave a devotion.

No new members were recognized. No changes were made to the agenda. Gracella then presented the July 12, 2010 executive committee minutes and they were accepted. The September 2010 financial reports were presented in the Book of Reports and accepted. Rev. Gerald Morris presented his report in the Book of Reports also.

Karen Burnette presented the WMU report. She said that the emphasis of the WMU this year is to prevent "human exploitation". They are encouraging every church to donate gloves for the Red Boxes to be sent to the NC Prisons. 800 are needed. She also encouraged all the churches to give to the Lottie Moon Christmas Offering and to educate the congregations about where the money is being spent. In February 2011 the NC WMU is celebrating its 125th year. The Tuckaseegee Baptist Association has a goal to collect 125 children's Bibles to be given out through the REACH program.

No Old Business.

New business:

1) Gerald presented the 2010 Book of Reports. Karen Burnette's name was inserted in the nominating committee list to be the associational representative to S.W.A.R.M.

2) There was a motion from the Finance Committee to spend \$800 or less of Annie Hoyle funds for upgraded computer and software. It was approved.

Announcements and prayer requests were then taken. The meeting ended with prayer by Emery Brooks.

January 3, 2011 - The association met at the Baptist Center. Interim Director of Missions, Rev. Gerald Morris, presided. 15 executive committee members and 1 visitor represented 9 churches. Grace Morris led the group in singing "*Amazing Grace*". Rev. Johnny Lee, pastor of Scotts Creek Baptist Church, gave a devotion from 2 Chronicles.

Leonard England from Calvary Baptist Church and Rev. Johnny Lee from Scotts Creek Baptist Church were recognized as new members. No changes were made to the agenda. Gracella then presented the October 4, 2010 executive committee minutes and one change was made. The WMU are celebrating their 125th year, not 175 years. They were then accepted. The November 2010 financial reports were presented and accepted. Rev. Gerald Morris presented his Director of Missions report.

Karen Burnette presented the WMU report. She said that the emphasis of the WMU this year is to prevent "human exploitation". She presented several workshops available at the high school to promote this. The NC WMU is celebrating 125 years this month. On February 20, 2011 at 3:00 p.m. the associational WMU is having a birthday party and having a celebration to share what each church has done mission wise. Each church is to have a game for participants to play at the party about their mission project. Janice Burnette and Ramona Monteith from the WMU planted a tree at the Baptist Center in memory of Annie Hoyle. Ms. Hoyle was an amazing woman who really supported missions and the association. Karen also encouraged all the churches to give to the Annie Armstrong Easter Offering and to educate the congregations about where the money is being spent.

Old Business: Annie Hoyle funds were used to buy and upgrade computer equipment and software for the association. (\$800 was approved and \$760.80 was spent.)

New business: The building and grounds committee presented a motion to receive bids for painting the outside of the Baptist Center. It was approved.

Announcements and prayer requests were then taken.

The meeting ended with prayer by Rev. Avery Brown.

April 5, 2010 - The Association met at the Baptist Center. Vice-Moderator, Rev. Johnny Lee presided. 11 executive committee members represented 8 churches. Johnny led the group in singing "At the Cross". Rev. Felix Villarreal, pastor of La Primera Iglesia Bautista de Amor, spoke about his mission trip in March to Puebla and Mexico City and read from Matthew 28:19 and 20.

No new members were present. No changes were made to the agenda. Betty Green then presented the January 3, 2011 executive committee minutes and they were accepted. The February 2011 financial reports were presented and accepted. Rev. Gerald Morris presented his Director of Missions report. He has enjoyed getting around to some of the churches for the second time. He met with the Missions and Ordination Committees. He also met with a Spring Worship Rally Committee to plan for the rally coming up on May 15th. Also an ad hoc committee met to plan the Church Leadership Training Conference coming up on May 21st. Gerald attended one meeting that should help him become a better DOM and another meeting with the Vision Fulfillment Committee of the Baptist State Convention of NC in Franklin. This committee was put in place to listen to Baptists all across the state to gauge how the Convention is serving the churches and carrying out its work. He took the opportunity to remind the members of the committee that the Convention is made up of small churches, many led by bi-vocational pastors. He mentioned that the churches of the association have come together for learning and fellowship a lot in the last quarter: GuideStone Tax Planning Workshop, WMU's 125th Birthday Party, The March Annual Singing, and the monthly pastors' fellowship.

Karen Burnette presented the WMU report. She said that the emphasis of the WMU this year is to prevent "human exploitation". She said they are working with the high school to prevent bullying. The NC WMU celebrated 125 years in February and the association had a birthday party on Feb. 20, 2011 at Scotts Creek Baptist Church. There were 9 churches represented. The Tuckaseegee Baptist Association collected 39 children's Bibles to be given out through the REACH program. She announced that the WMU's annual meeting would be at Ochre Hill on April 28 beginning with a salad supper at 6:00.

Old Business: Gerald reported that the Building and Grounds Committee has not had any response to their request for bids to paint the outside of the Baptist Center. They were open to suggestions.

New business:

- The Missions Committee recommended missions funding for up to \$1,000 for Felix for his September trip if the group consists of members from more than one church. It was approved.
- The Missions Committee recommended missions funding for up to \$1000 for an Associational trip(s) to Book-Link in KY in April and possibly one in summer. It was approved.
- Rev. Ray Fox reported from the Ordination Committee that they had questioned Emery Brooks from New Hope Baptist Church. He is going to be ordained on Sunday, April 10.

Announcements and prayer requests were then taken.

- ◆ NC Baptist Hospital Appreciation Supper and Missions Celebration, April 12th.
- ◆ Mission Trip Open for April 29 and 30 to Book-Link
- ◆ Baptist Children's Home Food Roundup (Cut off April 25)
- ◆ Spring Worship Rally, May 15 at Lovedale Baptist Church
- ◆ Church Leadership Training, May 21 at Lovedale Baptist Church

The meeting ended with prayer.

July 11, 2011 - The Association met at the Baptist Center. Interim Director of Missions, Rev. Gerald Morris, presided. 15 executive committee members and 1 visitor represented 10 churches. Rev. Robert Fernandez led the group in singing "*There Is a Name I Love to Hear*". Rev. Kent Lowdermilk, pastor of Little Savannah Baptist Church, gave a devotion. Rev. Joshua Blythe, pastor of Buff Creek Baptist Church, was recognized as a new member and Betty Dean was there to present the WMU report. No changes were made to the agenda. Gracella Morris presented the April 4th minutes and the June financial reports.

Gerald presented his Director of Missions report. He has visited many churches, helped churches and pastors with questions and needs. In April he led a group of 11 people on a mission to Book-Link in Eubank, KY. The NC Baptist Hospitals hosted a dinner at Ryan's for church leaders in the association. The Spring Worship Rally and Church Leadership Conference took place in May. He will take another group to Book-Link on July 22nd and 23rd. He also reported that a group has started a hoax that the Southern Baptist Convention had voted to affirm gay marriages. He wanted everyone to know that they have not.

Betty Dean presented the WMU report. WMU is collecting items for the Red Boxes and hygiene kits for the international students at Western Carolina University. They will be participating in Christmas in August and a leadership training on July 17th. Karen and Betty will continue to promote anti-bullying in the high school in August.

Old Business: Arthur Stephens from the Building and Grounds Committee made a motion that John Rogers Pro Finish be contracted to paint the outside of the Baptist Center. It was approved.

New Business:

- ♦ Arthur Stephens from the Building and Grounds Committee made a motion that the Tuckaseigee Baptist Association's facilities could be used by the Fruitland Baptist Bible Institute for extension classes. This was approved. The first class will start in October and will be taught by Rev. Robert Fernandez for Hispanic students.
- ♦ Gracella presented a Ministry Partnership Agreement with the Baptist State Convention of NC. The BSC will provide supplemental monies for Gerald's salary. It was approved.
- ♦ Rev. Justin Hunt from the Personnel Committee made a motion that Gracella Morris receive sick leave comparable to the Director of Missions in the By-Laws. This would be at the rate of one day per month, accruing on the first day of the month, not to exceed 120 working days. Additional sick leave may be credited against future months. It was approved.
- ♦ Rev. Justin Hunt from the Personnel Committee made a motion also made a motion that the "Interim" part of Gerald's job title be taken off. He would be the Director of Missions for the association. This was also approved.
- ♦ Gerald presented an idea to have an Associational Fall Singing in addition to the Associational Spring Singing. It was approved.
- ♦ Gerald presented the idea that \$400 be allocated for a Fall Youth Worship Rally. It was approved. He would like to get people together to pray for the students and staff at the schools for the Campus Prayer Journey in the fall and it would lead into the Youth Worship Rally.

Prayer requests were taken and Rev. Joshua Blythe led the group in closing prayer.

Place and Preacher Report

Thursday, October 18, 2012..... Lovedale Baptist Church Rev. Ray Knowles, Speaker
Mike Farmer, Alternate Speaker

Friday, October 19, 2012..... Rockdale Baptist Church Rev. Charles Lee, Speaker
Rev. Avery Brown, Alternate Speaker

Changes in the Churches

Churches without pastors in the past year

Buff Creek Faith Hamburg Ochre Hill Pine Creek

Pastors Leaving

Gene Hawkins, Faith
Eddie Dodson, Hamburg
Johnny Norris, Pine Creek

New Pastors

Joshua Blythe, Buff Creek
Eddie Dodson, Hamburg

Interim Pastors

J.D. Grant, Faith
Earl Holden, Ochre Hill

Called to the Ministry

Tyler Bradley, East Fork

Licensed and Ordained

David Watkins, Lovedale

ASSOCIATIONAL CALENDAR OF ACTIVITIES

2011-2012

OCTOBER 2011

- 3 Executive Committee 7:30 pm, Baptist Ctr
 - 4 Pastors Fellowship, Baptist Center, 12:00 p.m.
 - 11 Fruitland Alumni Day
 - 13 Associational Annual Meeting, Moses Creek
 - 14 Associational Annual Meeting, Liberty
 - 24 Senior Adults On Mission, Baptist Ctr, 11:00 a.m.
- World Hunger Month

NOVEMBER 2011

- 1 Pastors Fellowship, Baptist Center, 12:00 p.m.
- 6 Daylight Savings Time Ends
- 7-8 Baptist State Convention, Greensboro, NC
- 13-20 Week of Prayer and Special Offering for North Carolina Baptist Children's Homes
- 22-23 Office Closed for Thanksgiving Holiday
- 24 Thanksgiving Day
- 28 Senior Adults On Mission, Baptist Ctr, 11:00 a.m.

DECEMBER 2011

- 2-9 Week of Prayer for International Missions and Lottie Moon Christmas Offering
- 6 Pastors Fellowship, Baptist Center, 12:00 p.m.
- 25 Christmas
- 26-28 Office Closed for Christmas & New Year's Holidays

JANUARY 2012

- 1 New Year's Day
- 2 Executive Committee Meeting, 7:30 pm, Baptist Ctr
- 3 Pastors Fellowship, Baptist Center, 12:00 p.m.
- 10-11 NC Pastor/Staff Prayer Retreat, Ridgecrest, NC
- 23 Senior Adults On Mission, Baptist Ctr, 11:00 a.m.

FEBRUARY 2012

- 7 Pastor's Fellowship, Baptist Center, 12:00 p.m.
- 14 Valentine's Day
- 13-19 Focus on WMU
- 27 Senior Adults On Mission, Baptist Ctr, 11:00 a.m.
- 27 Culture Reach: Evangelism Conf., Winston-Salem, NC

MARCH 2012

- 6 Pastor's Fellowship, Baptist Center, 12:00 p.m.
- 6-7 Pray 2 Go, A Kingdom Focused Prayer Gathering, Fruitland Baptist Bible Inst. & Mud Creek Baptist Church
- 11 Daylight Savings Time Begins
- 4-11 Week of Prayer for North American Missions and Annie Armstrong Easter Offering
- 18 Twenty-Fifth Annual Associational Singing
- 26 Senior Adults On Mission, Baptist Ctr, 11:00 a.m.

APRIL 2012

- 2 Executive Committee, 7:30 pm, Baptist Center
- 3 Pastor's Fellowship, Baptist Center, 12:00 p.m.
- 2-6 Jackson Co. School's Spring Break
- 6 Good Friday
- 8 Easter Sunday
- 9 Office Closed for Holiday
- 13-14 NCBM Missions Conference, Charlotte, NC
- 20-22 Missions Extravaganza - Ridgecrest, NC
- WMU Annual Meeting, To Be Announced
- 23 Senior Adults On Mission, Baptist Ctr, 11:00 a.m.

MAY 2012

- 1 Pastor's Fellowship, Baptist Center, 12:00 p.m.
- 6-12 Mother's Day Offering
- 13 Mother's Day
- 28 Office Closed for Memorial Day

JUNE 2012

- 5 Pastor's Fellowship, Baptist Center, 12:00 p.m.
- 17 Father's Day
- 19-20 Southern Baptist Convention - New Orleans, LA
- 25 Senior Adults On Mission, Baptist Ctr, 11:00 a.m.

JULY 2012

- 3 Pastor's Fellowship, Baptist Center, 12:00 p.m.
- 4 Independence Day
- 4 Office Closed for Independence Day
- 9 Executive Committee 7:30 pm, Baptist Ctr
- 23 Senior Adults On Mission, Baptist Ctr, 11:00 a.m.

AUGUST 2012

- 7 Pastor's Fellowship, Baptist Center, 12:00 p.m.
- 27 Senior Adults On Mission, Baptist Ctr, 11:00 a.m.

SEPTEMBER 2012

- 4 Pastor's Fellowship, Baptist Center, 12:00 p.m.
- 3 Office Closed for Labor Day
- 24 Senior Adults On Mission, Baptist Ctr, 11:00 a.m.

Month of Prayer & Special Offering for NC Missions

OCTOBER 2012

- 1 Executive Committee 7:30 pm, Baptist Ctr
- 2 Pastor's Fellowship, Baptist Center, 12:00 p.m.
- 18 Associational Annual Meeting, Lovedale
- 19 Associational Annual Meeting, Rockdale
- 22 Senior Adults On Mission, Baptist Ctr, 11:00 a.m.

Director of Missions

2011 Annual Report

I must serve the best Association! I have been thrilled at the sincerity and passion of each church to follow our Lord Jesus Christ to the best of their ability. From the North to the South ends of the county, I have felt the desire of the churches to come together as an Association to work to serve the Lord in a greater way than any individual church ever could. I have seen a desire and hunger to see the Lord's work be renewed in Jackson County. With this in mind, I send you this report for the 2010-2011 Association year.

This year has been a time of renewal of the missions, worship, training and fellowship opportunities in the Association. I have had the pleasure of leading two mission trips to Book-Link in Eubank, Kentucky. The participants of the trip all seemed to have had a great time and I have been requested to plan another trip next year. I have been exploring more mission venues so that the Association will be able to offer different opportunities of various types.

We have had several superb fellowship and worship occasions this year too. The Association hosted a fall singing in addition to the traditional spring Associational Singing. In the spring we also held the first annual Spring Worship Rally. This was a great time for the churches of the Association to come together as one. As a compliment to the Spring Worship Rally for adults, the Association hosted a Youth Worship Rally as part of the Youth Emphasis Week. This week also included a Marriage Enrichment Conference, a Campus Prayer Journey for children's schools and a Youth Lock-in. The Pastors' Fellowship is still going strong as we meet the first Tuesday of each month during lunch for a time of devotion, fellowship and prayer. Each of these events were a great time for the churches to come together for times of fellowship with each other and the worship of our Lord.

Training opportunities have also been expanded this year. We expanded the annual Sunday School Training to include all church leaders, renaming it the Church Leadership Conference. Johnny Ross led a Ministerial Tax and Financial Seminar for the pastors and leaders in the region. Paul Mullen hosted several church leaders at Ryan's as he informed us about the work of the Baptist Hospital in Wake Forest, NC. I am always looking at how the Association can help the churches be the best they can be. So please let Gracella or me know about any ideas you have about training needs in your church.

I am thrilled about serving you as the Director of Missions and have loved every minute. But I am afraid that we will not be able to continue offering the services that we have for very much longer if our finances do not improve. Over the last several years the Association has been running a deficit. We have been blessed to have had some money in savings but that is quickly running out. If we continue operating with this deficit, we will run out of money in two to three years. If you like the direction the Association is going, please consider discussing with your church an increase in giving to the Association. I know it is a bad time to be asking for more money, but I feel it is necessary for me to let you know where the Association stands financially.

Your servant for Christ,



Gerald Morris

Historical Report

Buff Creek: Rewrote Church by-laws and constitution as a church. Bought new ice maker. Welcomed new pastor.

Dicks Creek: New roof was put on the church in July 2011.

East Fork: Tyler Bradley announced his call to go into the ministry.

El Centro Del Señor: Several members participated in leadership training offered by the state convention in March. Many members have applied to Fruitland Baptist Bible Institute for new classes to be offered this fall in Sylva. Pastor Robert will teach the courses that are to be held at the Tuckaseegee Baptist Association building.

Faith: Built handicapped ramps for people in the community.

Ochre Hill: Mission trip to Wheeling, West Virginia: July 24th - 29th.

Scotts Creek: During 2011, their church began a building project to remove the ceilings in our educational building and replace with new ceiling tiles and new lighting. We began the "Chest of Joash" collection of funds for the project in March; in May the work was begun; the project was completed in July. In 2011, we also began a C.A.R.E. (Christian Actively Reaching Everyone) Ministry on the first Wednesday of each month. Members are divided into four groups (Prayer, visiting, writing, and calling) following our fellowship meal. We average 50-60 contacts each month during this outreach endeavor.

Webster: Embrace started - July 2010. Hired full-time youth minister in July 2010. Began building Christian Life Center in July 2010. Started Choir in August 2010.

Tuckaseegee Baptist Association:

- ◆ The association held its Spring Associational Singing on March 20th. 22 Churches participated and \$2,963.33 was collected for the Baptist Children's Homes of NC.
- ◆ The NC Baptist Hospitals hosted a dinner on April 12th at Ryan's Steakhouse for church leaders in the association.
- ◆ The association held their 4th annual Church Leadership training in May 2011 at Lovedale Baptist Church. It was a very successful training using local leaders for trainers. Expanded this from just being a Sunday School leadership training.
- ◆ The association held the 1st Spring Worship Rally in May 2011 at Lovedale Baptist Church. Rev. Thad Dowdle spoke and Rev. Robert Fernandez translated the service into Spanish for our Hispanic churches.
- ◆ The association led a group of 11 people on a mission trip to Book-Link in Eubank, KY in April and another trip with 7 people in July. Four churches were represented at these mission trips.
- ◆ A Fall Associational Singing was held for the first time. 12 churches participated and \$1,144.30 was received for the Baptist Children's Homes of NC.
- ◆ The association held a Youth Emphasis Week (September 16-23).
 1. Around 50 youth attended the youth rally on September 23rd at Lighthouse Baptist Church.
 2. About 15 couples worshiped September 24th (with 20 children in childcare) at Lighthouse Baptist Church for the Marriage Enrichment Conference. Cashiers Baptist Church provided their puppet show for entertainment for the children in childcare.
 3. Approximately 138 people participated in the Campus Prayer Journey at the public schools to pray for the children, staff and board in Jackson County. At least 14 churches were represented.
 4. Had 21 youth participate in an association lock-in at Lighthouse Baptist Church. 4 churches were represented.

MUSIC REPORT

Emery Brooks, Music Director

The Annual Singing of the Tuckaseegee Baptist Association was held Sunday, **March 20, 2011**. Host churches and participating churches are listed below. This year's offering was again designated for the Baptist Children's Homes. The total collection was \$2,963.33. The total in attendance was 776. Last year we collected \$2,622.85 and had 753 in attendance.

Liberty Baptist - Host

Attendance: 175 Collected: \$651.40
New Hope Baptist
Ochre Hill Baptist

Promised Land Baptist - Host

Attendance: 44 Collected: \$187.00
Mt. Pleasant Baptist
East Fork Baptist

Locust Field Baptist - Host

Attendance: 96 Collected: \$523.35
Long Branch Baptist
Dicks Creek Baptist

Webster Baptist - Host

Attendance: 100 Collected: \$155.00
Jarrett Memorial Baptist
New Savannah Baptist

Scotts Creek Baptist - Host

Attendance: 188 Collected: \$665.58
Lovedale Baptist
Old Savannah Baptist

Rockdale Baptist - Host

Attendance: 73 Collected: \$559.00
Speedwell Baptist
Moses Creek Baptist

Hyatt's Chapel Baptist - Host

Attendance: 100 Collected: \$222.00
Little Savannah Baptist
Calvary Baptist
Buff Creek Baptist

The first ever Fall Singing of the Tuckaseegee Baptist Association was held Sunday, **September 18, 2011**. Host churches and participating churches are listed below. The offering was designated for the Baptist Children's Homes. The total collection was \$1,144.30. The total in attendance was 310.

Buff Creek Baptist - Host

Attendance: 81 Collected: \$235.00
Hyatts Chapel Baptist
Calvary Baptist

Speedwell Baptist - Host

Attendance: 50 Collected: \$222.00
Long Branch Baptist

New Savannah Baptist - Host

Attendance: 59 Collected: \$313.00
Dicks Creek
New Hope

Ochre Hill Baptist - Host

Attendance: 120 Collected: \$374.30
Promised Land
Moses Creek

WMU Report, Karen Burnette

"Breaking the Chains of Human Exploitation"

Mission Action:

-Maintained the Mildred Cowen Memorial prayer garden at Truett Camp, set out new flowers.

-Collected money and took the family of a Fruitland student shopping for clothes, shoes, and school supplies.

-Bought and planted a magnolia tree for the Annie Hoyle memorial at the Baptist Center.

-Collected \$100 and 87.5 pairs of gloves for the WMU NC Red Box Prison Ministry

-Association churches collected 1,152 shoeboxes for the Samaritan's Purse Operation Christmas Child project. Some members went to Charlotte to help at the distribution center.

-Supplied meals for El Centro del Senor and served the meal for the Hispanic regional Rally.

-Encouraged churches to pay tuition for 2 El Centro del Senor men to attend Fruitland Bible Institute.

-Maintained email contact for those who participate in the WMU NC prayer ministry with Pac-Rim countries.

Adults: Karen Burnette helped plan The Unevent for SHINE women and professional women. She also attended. 10 women attended Missions Extravaganza at Ridgecrest. Several helped out as flag bearers, ushers, and speakers.

Students: Karen Burnette, Betty Dean, and Janice Burnette served on the Anti-Bullying Committee at Smoky Mountain High School and worked with Mountain Projects. We supported Everybody Love Everybody Week, Tech-NO Day, and WNC Teen Institute.

Children: On Sunday, February 20, ladies, men, youth, and children from 9 churches gathered in Scotts Creek Baptist Church's Fellowship Hall to celebrate WMU NC's 125th birthday, Children's Ministry Day, and Focus on WMU Week. People usually bring gifts to birthday parties. Thus, people brought children's Bibles, 39 total, which Melissa Dingman delivered to REACH which is an organization which combats domestic violence. Also, some people gave financial contributions to the Heck-Jones Offering. Parties have games; so each church set up an interactive display teaching children one way that church does missions. Our birthday cake was in the shape of a 125. There were balloons, and everyone sang "Happy Birthday."

Preschoolers: Children collected items for Christmas in August, local schools, and Broyhill Children's Homes. They delivered food items to the Broyhill Children's Home in Clyde.

TUCKASEIGEE BAPTIST ASSOCIATION PROPOSED BUDGET, 2010-2011

	Actual Expenditures 10/1/09-9/30/10	Expenditures to Date 10/1/10 - 9/19/2011	2011 Budget	Remaining Balance as of 9/20/2010	Recommended Budget 2011-12	Increase/ (Decrease)
I. MISSIONS OUTREACH						
Disaster Relief	0.00	0.00	100.00	100.00	100.00	0.00
Handyman Ministries	0.00	0.00	100.00	100.00	100.00	0.00
S.W.A.R.M.	100.00	100.00	100.00	0.00	100.00	0.00
Hosp. Chaplaincy Fund	100.00	100.00	100.00	0.00	100.00	0.00
Camp Truett	100.00	100.00	100.00	0.00	100.00	0.00
II. ORGANIZATIONAL MINISTRIES						
Office Supplies	283.63	469.05	600.00	130.95	600.00	0.00
Postage	1,006.45	1,108.53	1,300.00	191.47	1,300.00	0.00
Conference & Conv.	0.00	244.92	300.00	55.08	300.00	0.00
Sunday School	218.75	271.52	300.00	28.48	300.00	0.00
Church Training	0.00	0.00	0.00	0.00	0.00	0.00
Youth	0.00	0.00	300.00	300.00	300.00	0.00
VBS	0.00	50.00	100.00	50.00	50.00	(50.00)
Evangelism	0.00	400.00	400.00	0.00	400.00	0.00
Senior Adults	0.00	0.00	150.00	150.00	150.00	0.00
Singles Ministry	0.00	0.00	50.00	50.00	50.00	0.00
Music	0.00	50.00	50.00	0.00	50.00	0.00
III. PROPERTY SUPPORT MINISTRIES						
Property Insurance	1,235.00	1,254.00	1,300.00	46.00	1,400.00	100.00
Telephone	1,307.51	1,245.50	1,400.00	154.50	1,400.00	0.00
Electricity	1,479.30	1,289.81	1,600.00	310.19	1,600.00	0.00
Office Equip & Repairs	1,258.00	1,346.00	1,300.00	(46.00)	600.00	(700.00)
Bldg/Grnds Maint/Upkeep	900.14	3,732.96	1,200.00	(2,532.96)	1,200.00	0.00
Travel Reimburse.	1,346.75	1,932.42	3,600.00	1,667.58	3,000.00	(600.00)
IV. EQUIPPING MINISTRIES						
Assoc Leader Train	0.00	0.00	100.00	100.00	100.00	0.00
Library & Audiovisuals	0.00	19.19	50.00	30.81	50.00	0.00
V. PERSONNEL MINISTRIES						
Director's Salary	6,662.05	10,100.04	10,100.00	(0.04)	10,100.00	0.00
Director's Housing	10,205.00	11,199.96	11,200.00	0.04	11,200.00	0.00
Director's Retirement	0.00	2,130.00	2,130.00	0.00	2,130.00	0.00
Secretary's Salary	14,421.96	14,855.04	14,855.00	(0.04)	14,855.00	0.00
Secretary's Retirement	1,442.28	1,485.48	1,485.50	0.02	1,485.50	0.00
Comp SS./Med 7.65%	1,103.28	1,136.47	1,136.41	(0.06)	1,136.41	0.00
Hon. for Treasurer	0.00	0.00	0.00	0.00	0.00	0.00
Hon. for Clerk	200.00	200.00	200.00	0.00	200.00	0.00
VI. MISCELLANEOUS						
Assoc. Minutes	572.10	61.39	600.00	538.61	100.00	(500.00)
Exec Comm Refresh	1.80	6.65	40.00	33.35	40.00	0.00
Miscellaneous	7.00	90.00	500.00	410.00	500.00	0.00
Petty Cash	0.00	0.00	20.00	20.00	20.00	0.00
VII. SPECIAL PROJECT						
Special Project Expenses	20.00	464.11				
Missions		1,827.37				
Annual Singing-BCH	2,095.35	2,733.33				
Hispanic Church Ministry	695.24	991.31				
Annie Hoyle Endowment	354.37	760.80				
Bibles for Deceased	25.00	125.00				
TOTAL EXPENSES	47,140.96	61,880.85	56,866.91	1,887.98	55,116.91	(1,750.00)
TOTAL RECEIPTS	51,656.51	51,265.34				
Change in Cash Balance	4,515.55	(10,615.51)	22			

**TUCKASEIGEE BAPTIST ASSOCIATION
FINANCIAL INFORMATION SUMMARY**

EXPENDITURES; Oct. 2010 - Sept. 2011

I. MISSIONS OUTREACH	
S.W.A.R.M.	100.00
Hosp. Chaplaincy Fund	100.00
Camp Truett	100.00
II. ORGANIZATIONAL MINISTRIES	
Office Supplies	469.05
Postage	1,108.53
Conference & Convention	244.92
Sunday School	271.52
Church Training	0.00
Youth	250.00
VBS	50.00
Evangelism	400.00
Senior Adults	0.00
Singles Ministry	0.00
Music	50.00
III. PROPERTY SUPPORT MINISTRIES	
Property Insurance	1,254.00
Telephone	1,245.50
Electricity	1,289.81
Office Equip & Repairs	1,346.00
Bldg/Grnds Maint/Upkeep	3,732.96
Travel Reimbursement	1,932.42
IV. EQUIPPING MINISTRIES	
Assoc. Leader. Training	19.19
Library & Audiovisuals	0.00
V. PERSONNEL MINISTRIES	
Director's Salary	10,100.04
Director's Salary Housing	11,199.96
Director's Retirement	2,130.00
Secretary	14,855.04
Retirement (Secretary)	1,485.48
Company Soc. Sec./Medicare	1,136.47
Hon. for Clerk	200.00
VI. MISCELLANEOUS	
Assoc. Minutes	61.39
Executive Comm. Refreshments	6.65
Miscellaneous	140.00
Petty Cash	0.00
Bibles for Deceased	125.00
VII. SPECIAL PROJECTS	
Annual Singing-Baptist Childrens Homes	2,733.33
Missions	1,827.37
Hispanic Church Ministry	991.31
Special Project Expense	464.11
Annie Hoyle Endowment	760.80
TOTAL	\$62,180.85

RECEIPTS; Oct. 2010 - Sept. 2011

Big Ridge	0.00
Buff Creek	1,175.00
Calvary	0.00
Cashiers	3,000.00
Cullowhee Valley	0.00
Dicks Creek	275.00
East Fork	2,400.00
El Centro Del Senor	522.85
Faith	1,912.53
Greens Creek	2,400.00
Hamburg	0.00
Hyatts Chapel	600.00
Jarrett Memorial	300.00
La Primera Iglesia Bautista	100.55
Liberty	0.00
Lighthouse	683.12
Little Savannah	500.00
Locust Field	900.00
Long Branch	400.00
Lovedale	3,270.00
Moses Creek	600.00
Mt. Pleasant	0.00
New Hope	8,400.00
New Savannah	250.00
Ochre Hill	1,100.00
Old Savannah	3,000.00
Pine Creek	0.00
Promised Land	0.00
Rockdale	2,100.00
Scotts Creek	1,200.00
Shoal Creek	0.00
Sols Creek	0.00
Speedwell	360.00
Unity	0.00
Webster	500.00
Wilkesdale	510.48
TOTAL CHURCH SUPPORT	\$36,459.53
Annie Hoyle Endowment	5,575.30
Interest	1,491.40
Baptist State Convention	2,426.69
Annual Singing	3,612.63
Hispanic Ministry	928.99
Other Designated Gifts	531.11
Private Gifts/Memorials	965.00
TOTAL RECEIPTS	\$51,990.65
Less Total Expenses	62,180.85
Difference	(\$10,190.20)

**Tuckaseigee Baptist Association
Balance Sheet
As of September 28, 2011**

ASSETS

General Checking (Macon Bank)	7,857.33
Deacons, Pastors, Wives Checking (Macon Bank)	434.81
Certificates of Deposits & Savings (Jackson Savings Bank)	51,034.71
Total Assets	<u>59,326.85</u>

DESIGNATED FUNDS

Designated to send money to Gideons International in memory of Deacons & Pastors	434.81
Disaster Relief	854.13
Annie Hoyle Endowment for capital expenditures & mission expenses	23,651.67
RA's	68.00
Handy-Man Project	1,125.48
Missions (for mission trips by 2 or more combined member churches \$1,000 per trip)	2,065.00
Reserved for Repairs & Replacement	10,491.58
Total Designated Funds	<u>38,255.86</u>

Total Monies Remaining for Normal Operating Expenses	<u><u>21,070.99</u></u>
---	-------------------------

SENIOR ADULTS ON MISSION REPORT

Carolyn Morris, Senior Adult Director

The Senior Adults on Mission meet the fourth Monday of each month at the Tuckaseigee Baptist Association Building. We meet at 11 a.m. for our meeting and then have a Potluck lunch.

At the September meeting Page Richardson from NC Baptist Aging Ministries (NCBAM) shared with us the things that NCBAM is doing for the aging in our county and how we can help.

Three immediate projects that the Senior Adults on Mission have adopted are as follows:

- ◆ Support and participate in the Campus Prayer Journey at each of the Jackson County schools.
- ◆ Furnish snacks for the fourth week of Bible Club each month at one of the participating schools.
- ◆ Adopted five residents from Skyland Care Center. We will be doing special things for them and visiting with them throughout the year. These are residents that have no family to visit them.



Memorials



Buff Creek
Clara Shuler

Calvary
Violet Melton

Cullowhee Valley
Rev. James Kenneth Pressly

Dicks Creek
Mrs. Geneva Elders Summey

East Fork
Danny Lohwasser

Faith
Clayton Williams

Lighthouse
Jason Eilers

Little Savannah
Mrs. Hazel Lewis

Locust Field
Mr. Daniel Coggins
Mrs. Mildred Lewis
Mrs. Nancy Hefner
Ms. Mabel Hensley

Lovedale
Jerry Moody
Charles E. Cagle
Larry Browning
John Moss

Moses Creek
Mr. Huey Buchanan
Mrs. Carolyn Fish

New Hope
Oscar Burgess
Mildred Harris

Ochre Hill
Randy Jones

Pine Creek
Mrs. Lucy Norris

Rockdale
Greg Gibson
Rev. Abe Brooks

Scotts Creek
Faye Dean
Ronnie Harris
Winston Baughn
Odesser Wilson
Tommy Cogdill
Wade Rhinehart
Jackie Stillwell
Grace Mitchell

Speedwell
Charles (Pete) Wilkes

Webster
Wanda Morris

Wilkesdale
Mr. Virgil Hall

HISTORICAL TABLE

YEAR	SESSION	PLACE	DATE	MODERATOR	CLERK	DIR OF MISS	PREACHER
1851	22	Jonathan Ck	Oct 10	Joshua Ammons	Z B Allen		Joshua Ammons
1852	23	Scotts Ck	Aug				William Haynes
1894	65	Franklin	Aug 16-19	A H Sims	T C Bryson		G A Bartlett
1895	66	Mt Pleasant	Aug	A H Sims	T C Bryson		
1911	82	Cullowhee	Aug 17-20	Thad Bryson	W L Henson		R L Cook
1912	83	Savannah	Aug				J M Bennett
1916	87	Scotts Ck	Aug 17-19	C C Cowan	H B Jones		J B Smiley
1917	88	Shoal Creek	Aug				R L Cook
1923	94	Lovedale	Aug 16-20	T F Deitz	Hugh Monteith	T F West	W Ross Yokley
1924	95	Qualla	Aug 14-16	T F Deitz	Hugh Monteith	T F West	R L Cook
1925	96	Hamburg	Aug				
1927	98	Tuckasegee	Aug 18-20	T F Deitz	A J Dills		J G Murray
1928	99	Sylva First	Aug				L K Stafford
1929	100	Cullowhee	Aug 15	T F Deitz	W C Reid		T F Deitz
1930	101	Webster	Aug 14	T F Deitz	W C Reid		J G Murray
1931	102	Hamburg	Aug	T F Deitz			W N Cook
1932	103	Shoal Creek	Aug 18	T F Deitz			
1933	104	Scotts Creek	Aug 17-20	T F Deitz	W N Cook		L K Stafford
1934	105	Johns Creek	Aug 16-19	T F Deitz	W N Cook		W C Reed
1935	106	Old Savannah	Aug 15-18	T F Deitz	W N Cook		L K Stafford
1936	107	Lovedale	Aug 13-16	T F Deitz	W N Cook		L H Crawford
1937	108	Sols Creek	Aug 12-15	T F Deitz	W N Cook		Ben Cook
1938	109	Sylva	Aug 18-19	T F Deitz	W N Cook		G N Cowan
1939	110	Zion Hill	Aug 19-20	T F Deitz	W N Cook		W N Cook
1940	111	Moses Creek	Aug 15-16				L H Crawford
1941	112	Ochre Hill	Aug 14-15	T F Deitz			W N Cook
1942	113	Balsam Grove	Aug 13-14	T F Deitz	W N Cook		G C Teague
1943	114	Hamburg	Aug 12-13	T F Deitz	W N Cook		F F Brown
1944	115	Barkers Creek	Aug 17-18	T F Deitz	W N Cook	Gretchen Johnson	W E Pettit
1945	116	Lovedale	Aug 16-17	T F Deitz	W N Cook	Gretchen Johnson	Mark Osborne
1946	117	Cashiers	Aug 15-16	T F Deitz	W N Cook	Clarence Vance	F P Blankenship
1947	118	Wilkesdale East Sylva	Aug 14 Aug 15	T F Deitz	J Bryson	Clarence Vance	Dillard Wood
1948	119	Hyatts Chapel Shoal Creek	Aug 14 Aug 15	C M Warren	J Bryson	Euva Sentelle	Joe Bishop Melvin Snyder
1949	120	Big Ridge Hamburg	Aug 18 Aug 19	C M Warren	E Sentelle	Pauline Snelson	Melvin Snyder L H Brothers

HISTORICAL TABLE

YEAR	SESSION	PLACE	DATE	MODERATOR	CLERK	DIR OF MISS	PREACHER
1950	121	Pine Creek Yellow Mountain	Aug 17 Aug 18	J E Brown	P Snelson	Pauline Snelson	H E Marshbanks
1951	122	Sylva First Scotts Creek	Aug 16 Aug 17	J E Brown	E Sentelle	Pauline Snelson	Dr McGee W C Reed
1952	123	Buff Creek Ochre Hill	Aug 14 Aug 15	J E Brown		Pauline Snelson	Ralph Nix
1953	124	Old Savannah East Fork	Aug 13 Aug 14	J E Brown	C Corbin	Dorothy Edwards	L H Crawford J C Pipes
1954	125	Cullowhee Lovedale	Aug 12 Aug 13	J E Brown	C Corbin	Dorothy Edwards	Clyde Collins R W Abrams
1955	126	Lumberton Balsam Grove	Aug 18 Aug 19	J E Brown	C Corbin	Dorothy Edwards	Roland Pruette James Vanderford
1956	127	Hamburg Tuckasegee	Aug 16 Aug 17	J E Brown		Dorothy Edwards	Frank Reed
1957	128	New Hope Black Mountain	Aug 15 Aug 16	Edwin Allison	C Corbin	Dorothy Edwards	Zeb Barker
1958	129	Deitz Memorial Sylva	Aug 14 Aug 15	W Middleton	J Lambert	Alton Hooper	W L Sorrells M A Huggins
1959	130	Scotts Creek Balsam	Aug 13 Aug 14	W Middleton	J Lambert	Alton Hooper	Clarence Vance Doug Branch
1960	131	Rockdale New Savannah	Aug 18 Aug 19	R W Abrams	J Lambert	Alton Hooper	Quentin Perreault Nane Starnes
1961	132	Shoal Creek Hyatts Chapel	Aug 17 Aug 18	R W Abrams	J Lambert	Alton Hooper	J W Costner Ernest Upchurch
1962	133	Buff Creek Hamburg	Aug 16 Aug 17	Ray McCall	J Lambert	Alton Hooper	Alfred Sellers R W Abrams
1963	134	East Sylva Tuckasegee	Aug 15 Aug 16	Ray McCall	J Lambert	Alton Hooper	James Lambert Harry Vance
1964	135	Mt Pleasant Balsam	Aug 13 Aug 14	Ray McCall	J Lambert	Alton Hooper	Clyde Collins Joseph Reece
1965	136	Yellow Mountain Scotts Creek	Aug 12 Aug 13	Alfred Sellers	J Lambert	Alton Hooper	Roy Smith J E Brown
1966	137	Sylva First Calvary	Aug 18 Aug 19	Joseph Reece	Lloyd Fish	Alton Hooper	Lloyd Fish A B Lovell
1967	138	Ochre Hill Rockdale	Aug 17 Aug 18	Joseph Reece	A Hooper	Alton Hooper	Lloyd Fish George Langley
1968	139	No Minutes					
1969	140	Old Savannah Jarrett Memorial	Aug 14 Aug 15	Judson Rotan	C Dean	Walter Middleton	Burrell Lucas Charles Dean
1970	141	Tuckasegee Buff Creek	Aug 13 Aug 14	Judson Rotan	C Dean	Walter Middleton	Charles Bullock Judson Rotan
1971	142	Zion Hill Cullowhee	Aug 12 Aug 13	Robert Blanton	C Dean	Walter Middleton	M Clayton Frank Reed

HISTORICAL TABLE

YEAR	SESSION	PLACE	DATE	MODERATOR	CLERK	DIR OF MISS	PREACHER
1972	143	Balsam Webster	Aug 17 Aug 18	Robert Blanton	A Hoyle	Walter Middleton	H Anderson Charles Dean
1973	144	Cashiers Lovedale	Aug 16 Aug 17	John Hyatt	A Hoyle	Walter Middleton	Jack Holcombe Ray McCall
1974	145	Locust Field Greens Creek	Aug 14 Aug 15	John Hyatt	A Hoyle	Walter Middleton	L Jackson Harold Anderson
1975	146	Liberty New Hope	Aug 14 Aug 15	Robert Blanton	A Hoyle	Walter Middleton	C H Greene H Nicholson
1976	147	Hamburg Long Branch	Aug 12 Aug 13	Robert Blanton	A Hoyle		Luther Osment J D Wyatt
1977	148	Shoal Creek Black Mountain	Aug 18 Aug 19	Wesley Hooper	A Hoyle	C O Vance Alvin Loiry, Jr	Douglas McFadin Alvin Loiry, Jr
1978	149	Buff Creek Yellow Mountain	Aug 17 Aug 18	J C Robinson	A Hoyle	Alvin Loiry, Jr	Harry Vance Cecil Saunders
1979	150	Balsam Grove Pine Creek	Aug 16 Aug 17	J C Robinson	A Hoyle	Alvin Loiry, Jr	Bill Rogers Robert Blanton
1980	151	East Sylva Sylva First	Aug 14 Aug 15	Ray McCall	A Hoyle	Alvin Loiry, Jr	Jerry Laughter John Bunn
1981	152	Ochre Hill Hyatts Chapel	Aug 13 Aug 14	Ray McCall	A Hoyle	Alvin Loiry, Jr	Pat Correll David Blackney
1982	153	East Fork Jarrett Memorial	Aug 12 Aug 13	Ray McCall	A Hoyle	John Reid	T Connelly George Tuthill
1983	154	Cashiers Cullowhee	Aug 18 Aug 19	Johnny Enloe	A Hoyle	John Reid	Ben Cabe Jack Hinson
1984	155	Tuckasegee Moses Creek	Aug 16 Aug 17	Ed Stillwell	A Hoyle	John Reid	Carl Smith S J Waters
1985	156	Scotts Creek Old Savannah	Aug 15 Aug 16	Ed Stillwell	A Hoyle	John Reid	J D Griffin Virgil Cook
1986	157	Balsam Rockdale	Aug 21 Aug 22	Mike Moore	A Hoyle	John Reid	Abe Brooks Dennis Burrell
1987	158	Zion Hill Lovedale	Oct 15 Oct 16	Mike Moore	A Hoyle	John Reid	Joe Smith Lewis Smith
1988	159	Jarrett Memorial Sylva First	Oct 13 Oct 14	Roy Burnette	A Hoyle	John Reid	Glenn Blanton Ray McCall
1989	160	Cashiers Scotts Creek	Oct 12 Oct 13	Roy Burnette	A Hoyle	John Reid	Charles Sisti Charles Brown
1990	161	Ochre Hill Webster	Oct 18 Oct 29	Clyde Vance	A Hoyle	John Reid	Tommy Lamb Joe Yelton
1991	162	Buff Creek New Hope	Oct 17 Oct 18	Clyde Vance	R Houston	John Reid	Ed Beddingfield Earl Holden
1992	163	Greens Creek Yellow Mountain	Oct 15 Oct 16	James Pressley	R Houston	John Reid	Wayne Sorrells Larry Nations
1993	164	Lovedale East Sylva	Oct 14 Oct 15	James Pressley	R Houston	John Reid	Scott Courtney Barry Almand

HISTORICAL TABLE

YEAR	SESSION	PLACE	DATE	MODERATOR	CLERK	DIR OF MISS	PREACHER
1994	165	Cullowhee Hamburg	Oct 13 Oct 14	Wayne Sorrells	R Houston	John Reid	Mike Moore Eddie Stillwell
1995	166	Mt Pleasant Black Mountain	Oct 12 Oct 13	Wayne Sorrells	R Houston	John Reid	Roy Burnette Mike Farmer
1996	167	Cullowhee Zion Hill	Oct 17 Oct 18	Dennis Ensley	R Houston	John Reid	Harold Anderson Robert Blanton
1997	168	Locust Field Cashiers	Oct 16 Oct 17	E Beddingfield	W Caldwell	John Reid	Charles Carnes David Boroughs
1998	169	Scotts Creek New Hope	Oct 15 Oct 16	E Beddingfield	W Caldwell		Roger Stewman Keith Ashe
1999	170	Shoal Creek Webster	Oct 14 Oct 15	Tom McClure	W Caldwell		Robert Driggers Tommy Holden
2000	171	Sylva First Ochre Hill	Oct 12 Oct 13	Tom McClure	B Greene	Claude Conard	Rich Peoples Avery Brown
2001	172	Buff Creek East Fork	Oct 18 Oct 19	Mike Dellinger	A Bialy	Claude Conard	Steve Jamison Charles Dean
2002	173	Hamburg Greens Creek	Oct 17 Oct 18	Clemmey Queen	G Morris	Claude Conard	Brian Bishop Steve Gunter
2003	174	New Hope Rockdale	Oct 16 Oct 17	Art Fowler	G. Morris		Art Fowler Matt Ledbetter
2004	175	Hyatts Chapel Mt. Pleasant	Oct 14 Oct 15	Art Fowler	G. Morris		Larry Bryson Mike Moore
2005	176	Promise Land Faith	Oct 13 Oct 14	Art Fowler	G. Morris	Virgil Holloway	Dennis Burrell Avery Brown
2006	177	Webster Locust Field	Oct 12 Oct 13	Matthew Ledbetter	G. Morris	Virgil Holloway	David Powell Clemmey Queen
2007	178	Pine Creek Long Branch	Oct 18 Oct 19	Matthew Ledbetter	G. Morris	Virgil Holloway	Johnny Norris Marlan Keener
2008	179	New Hope Lighthouse	Oct 16 Oct 17	Avery Brown	G. Morris	Virgil Holloway	Dale Roberts Gene Hawkins
2009	180	Scotts Creek Cashiers	Oct 15 Oct 16	Avery Brown	G. Morris	Virgil Holloway	Josh Hyde Scotty Patrick
2010	181	Buff Creek Ochre Hill	Oct 14 Oct 15	Josh Hyde	G. Morris	Gerald Morris	Jason Buchanan Mark Tice
2011	182	Moses Creek Liberty	Oct 13 Oct 14	Josh Hyde	G. Morris	Gerald Morris	Mike Gunter Kent Lowdermilk

Truett Baptist Camp
346 Truett Camp Rd
Hayesville, N. C. 28904
Annual Report for 2011
July 30, 2011

We had such a good Western Happiness Retreat this year there was 88 campers and they sure enjoyed being here

Donnie Wiltshire was the leader and all his helpers did a terrific job.

We had two weeks of Girls' camp this year with 170 girls attending.

Wendy Britt was the leader and several good counselors made for a very good week. There was 7 girls saved and several young campers made re-dedications.

There was one week of Jr. Music Week 75 campers attended with

Lori Gilbert & Sarai Gilbert as leaders there was 1 camper that made salvation decision and several campers rededicated themselves to the Lord. They also had a good staff which made this week very special.

We had one week of Youth Music with 36 attending 3 campers were saved and 18 made rededication decisions J Gilbert was their director and did a terrific job with all his good helpers. The mountains were alive with the music from Jr. and Youth Music Campers.

We had one week of Boys' Camp, Ben McKinnon was the director. There were 60 boys that attended and they had a good time several commitments were made. The campers sure enjoyed the new dining hall, fishing in the pond, pedal boats, field games and different sport activities.

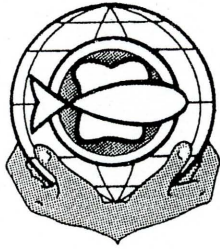
There has been 20 saved and many decisions made during the different church camps and retreats also.

We are deeply grateful for your prayers and support and for your caring enough to share Jesus with all. We are hopefully going to make a hiking trail soon for another activity for the campers to enjoy.

Worship and Bible study is a very important part of our camp program. Please encourage your children to come to camp and to register early.

Respectfully Submitted.

Tim Roberson Camp Director & Richard Roberson Assistant Director



UNITED CHRISTIAN MINISTRIES

P.O. BOX 188
SYLVA, NORTH CAROLINA 28779
828-586-8228

Did you know that in 2010 United Christian Ministries (UCM) aided 8,021 clients?

Over 79,000 pounds of food was distributed to 2,968 families.

UCM paid electric bills for 294 families in the amount of \$43,567.88.

Eighty families received \$10,892.81 for heating assistance.

Fifty-two families received \$8,214.75 to pay for rent and thus prevent eviction.

Thirty-eight families received \$2,562.09 for medical assistance.

\$2,404.08 was paid for 24 nights for emergency housing.

Thirty-two people received \$1,232.50 for emergency transportation.

The children in 212 families received diapers.

In addition UCM distributed donated winter coats and much furniture.

The little house at 191 Skyland Drive has a big heart thanks to the many donations from people all over the county!



October 2011

MedWest Harris
68 Hospital Road
Sylva, NC 28779

MedWest Haywood
262 LeRoy George Dr
Clyde, NC 28721

MedWest Swain Co
45 Plateau St
Bryson City, NC 28713

Dear Friends of the Chaplaincy,

Thank you all for supporting the MedWest Chaplaincy Program in 2010 and all the years before. The support of the Tuckaseegee Associational churches is invaluable for it enables us to continue this valuable ministry of compassion and spiritual support in our hospitals. A large portion of the support for the Chaplaincy program is from our local community and churches. If your church has included the Chaplaincy program in your church budget we thank you again. As you well know this local mission touches many hearts every day and night.

During "National Pastoral Care Week," I encourage you to celebrate all those who provide "pastoral care" especially your pastor. During that time or anytime I hope your church will choose to support the Chaplaincy program by:

- including the Chaplaincy program on your list of prayer concerns
- encourage your members to ask for the Chaplain or Chaplain on call when in our Hospitals
- making a gift to the MedWest Foundation **"Friends of the Chaplaincy" fund.**
- **joining the volunteer program**

Your support of our chaplaincy program enables us to provide spiritual support at all our facilities: Harris Regional Hospital, Swain County Hospital and oversight of the Chaplaincy Program at MedWest Haywood. Our Pastoral Care Department provides:

- Gideon Bibles for patients and in waiting areas (thank you Gideon's)
- An open chapel at each facility for prayer and meditation
- Care Notes, Daily Bread, and Guidepost magazine
- Visits to our new patients to provide spiritual support
- Calls to the pastor, priest or spiritual leader as requested
- A courtesy "Clergy Visitor" ID badge is available to pastors by request from my office.
- A Program of Pastoral Care Education (we have more than 30 volunteers across the system)
- Spiritual support for our staff

Our Hospital Administration has and continues to be supportive of the Pastoral Care Program and believes that spiritual care is a key part of the healing process. Be assured the chaplaincy program will continue as we expand our services and continue to seek to partner with our local churches in providing spiritual care at each facility. We give thanks for the communities continuing support.

Please call me when I can assist you or a member of your congregation. If you would like to know more about the program and how you can support or become involved please call 586-7145 or email me: ron_allen@westcare.org.

In His service,

Ron Allen, Chaplain,

Director of Chaplaincy Services for MedWest Health Care

Pastoral Care Week October 23-29, 2011



BAPTIST CHILDREN'S HOMES OF NORTH CAROLINA

(July 2010-July 2011)

Kourri (pronounced Cory) is always smiling. The teen rarely appears glum. Her enthusiasm for life, family, friends, and her future, overflows. "Everybody has ups and downs," Kourri says, "Today, my ups are all about Jesus." Kourri's life has changed abundantly since coming to live at Baptist Children's Homes in 2009. Before, Kourri smiled very little. Her family lost everything in Hurricane Katrina. Kourri moved with her father, step-mother and sisters from their home in Louisiana to North Carolina. But instead of a new start, turmoil developed within the family. Kourri became angry and depressed. Needing help, Kourri's father and step-mother turned to Baptist Children's Homes. There, things began to change as the Christian houseparents and staff cared for Kourri by showing her God's unfailing love.

But the most important transformation in Kourri's life occurred on November 22, 2009; it was the day Kourri accepted Christ as her Savior. "My life has drastically changed," she says. "I no longer desire to follow anyone but Jesus." And through Baptist Children's Homes, Kourri's relationship with her family has been healed. Kourri's faith shines as brightly as her smile. She openly shares her faith with others. "I encourage other people to follow Jesus."

Kourri's inspirational story is the centerpiece of Baptist Children's Homes' Annual Offering. Learn more about Kourri by watching year's video. The video will be available online at www.bchfamily.org/offering or call 1-800-476-3669 ext. 1209 to order a DVD.

Children's Lives Changed...

Kourri is among the countless children whose lives have been forever changed through the ministry of Baptist Children's Homes. In 2010, 74 residents accepted Jesus as Savior! Christ is at the heart of all that is accomplished at Baptist Children's Homes. Houseparents provide a Christian home to boys and girls. Daily devotions, church involvement, and prayer are hallmarks of the statewide ministry. We celebrate every life that has been transformed in the name of Christ.

BCH Completes Year-Long Celebration...

Baptist Children's Homes of North Carolina observed its historic 125th year anniversary on November 11, 2010. Residents, staff members, churches and friends participated in a year-long "Quasquicentennial" celebration comprised of a multitude of creative events. One of the year's prominent highlights occurred at the 2010 Annual Session of the Baptist State Convention in Greensboro. On the evening of Monday, November 8, 2010, 250 Children's Homes' residents, alumni and staff members delivered an inspirational 25-minute presentation to messengers. Many in the audience were moved to tears as they heard the testimonies of past and current residents whose lives were changed through Baptist Children's Homes' Christ-centered ministry.

Children's Homes Receives Perfect Reaccreditation...

The exceptional quality of Baptist Children's Homes' statewide ministry and services was officially confirmed in February 2011 when the organization received its reaccreditation by the Council on Accreditation (COA). With no faults cited in the review process, BCH scored perfect on all 667 standards. In addition to the flawless outcome, one of the reviewers stated that out of all the faith-based organizations he has visited none were on par with Baptist Children's Homes when it came to the organization's commitment to carry out ministry. The reaccreditation process is a necessary one for Baptist Children's Homes and other agencies offering similar services. Reaccreditation means BCH has met the highest national standards and is delivering the best in quality services.

Baptists Rally for Food Roundup...

Boys and girls living at Baptist Children's Homes know whenever they sit down for a meal, the delicious food that fills their plates was provided through the generosity of North Carolina Baptists. The "Food Roundup" in April successfully united churches and other friends in collecting needed food, supplies and gift cards for residents. Baptist Children's Homes serves more than 700,000 meals and snacks every year.

Girls Camp Welcomes First Resident...

The dream of providing a residential wilderness camp to help at-risk girls has come to fruition. With her arrival on February 28, 2011, fourteen-year-old Katie became the first girl accepted at Camp Duncan in Aberdeen. Through the cooperation of North Carolina Baptist Men, more than 2,000 church volunteers transformed the 700-acre property into Baptist Children's Homes' new girls wilderness camp. The camp serves

as a complement to Cameron Boys Camp near Southern Pines, a program that has provided help to boys and their families since 1980.

Volunteers Make Odum Home Shine. . .

Groups from nine Baptist associations rallied together to donate both time and resources to renovate two children's cottages at Odum Home in Pembroke. Volunteers from within the community and around the state have revitalized Indian Memorial and Latta Harnett cottages. The much-needed improvements would not have been possible without generous contributions from charitable foundations, donors and the efforts of North Carolina Baptist volunteers. "Our children and staff know that they are not in this ministry alone," said Children's Homes president Michael C. Blackwell. "We are thankful we can count on the caring partners we have in our churches and friends."

NCBAM makes an impact . . . North Carolina Baptists are making a difference everyday in the lives of aging adults as NCBAM team members work to close the gap between those in need and people willing to help. NCBAM rejoices to hear that some of these differences have been eternal as aging adults have accepted Christ.

NCBAM team members meet biannually with two support teams comprised of North Carolina Baptists and expert professionals—an Advisory Team and a Spiritual Strategy team. Three regional directors cover the state—providing in-home assessments and facilitating partnerships with Baptist churches and associations as well as civic and social organizations. In 2012, NC Baptists in conjunction with the April 28, 2012 Inasmuch event will attempt to set a one-day record for wheelchair ramp construction in a statewide project called *Rampin' Up! Rampin' Up!* is a production of NCBAM.

Key advancements in the past year include:

- Call Center referrals have increased, the service provider database has grown and the length of time to provide help has decreased.
- NCBAM has published six "Christ the Cornerstone" brochures—spiritual resources designed especially for aging adults.
- NCBAM is tackling one of the greatest risks to the health of aging adults—falling. North Carolina Baptists have embraced *Priority #1: Prevention*. The eastern region of the state is heavily involved in the installation of grab bars in the homes of aging adults.
- In partnership with the NC Department of Insurance, seven ECHO events (Extra Community Help Outreach) have been held—helping Medicare recipients navigate prescription drug cost savings applications.

Developmental Disabilities Ministry Turns Ten. . .

"I am thankful for a room, a tooth brush – I'm thankful for everything! I thank the Lord for opening up the door for me." These are the words of Sedrick, a 24-year-old adult who endured years of abuse as a child resulting in traumatic brain damage and leaving him confined to a wheel chair. Today, Sedrick lives at Stegall Home in Marshville where he has found family, friends, and the special care he needs through Baptist Children's Homes' Developmental Disabilities Ministry.

On October 1, 2010, the Developmental Disabilities Ministry turned ten years old. The ministry began in Winston-Salem and has blossomed into nine homes across North Carolina for men and women. Throughout the decade, this much-needed ministry has offered hope and peace to the family members of special needs adults. Families know that their loved one will always be cared for and their needs will be met. The Developmental Disabilities Ministry, in many ways, is a best-kept secret. Learn more about the ministry by clicking on www.hereismyhome.org to read blogs about the residents and view the new video.

Baptist Children's Homes of North Carolina

Michael C. Blackwell, President

P.O. Box 338 / Thomasville, NC / 27361

1-800-476-3339

www.bchfamily.org

www.hereismyhome.org

www.ncbam.org



The NC Baptist Foundation, Inc. 2010 Annual Report



The North Carolina Baptist Foundation had another outstanding year in 2010. As the oldest of all the state Baptist foundations, we celebrated our 90th anniversary. We were founded by the Baptist State Convention in 1920 and continue to serve as the "trust agency" of the convention. Since our founding we have been "All In" in our commitment "to serve North Carolina Baptists and others in generating an increased awareness of Christian estate stewardship principals as a means of financially undergirding Baptist churches, institutions and mission endeavors on a permanent basis."

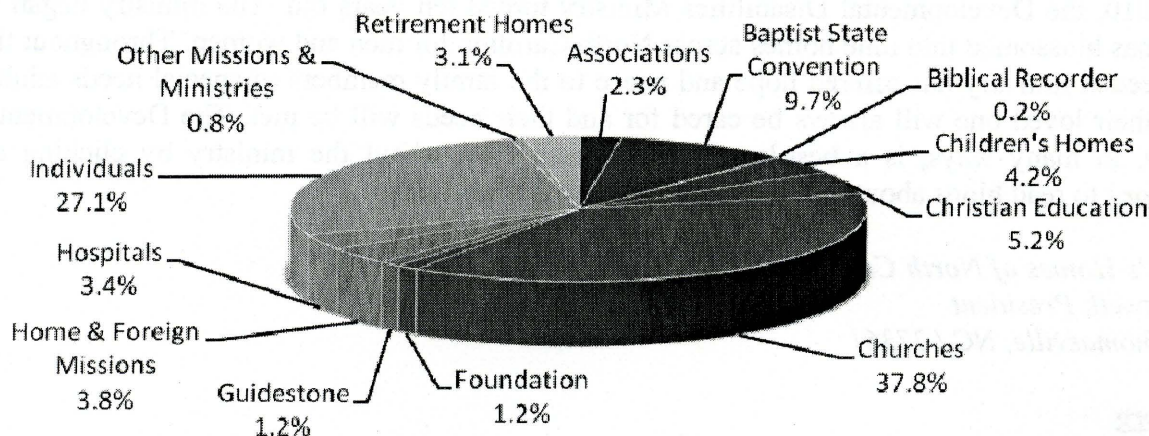
To that end, in 2010 our staff made some 184 presentations in Baptist churches and associations, institutions and agencies, as well as statewide Baptist senior adult conferences. We co-hosted Senior Adult Festivals at Campbell University, Chowan University and Mars Hill College, enabling us to further spread the word about the importance of Christian estate planning in supporting ministry in perpetuity. We did the same in sponsoring the 15th annual Noel Inspirational Retreat at Caraway Conference Center using as our theme, "Navigating Your Christian Estate Plan." Once again we co-sponsored two events with the Baptist State Convention, the 36th annual NC Baptist Development Officers Conference and the 10th annual NC Baptist Heritage Award Luncheon.

For the year we established 43 new accounts that totaled \$2,606,849.96. In addition, we received another \$2,073,758.67 into existing accounts, for total receipts of \$4,680,608.63 in 2010. During the same period, we distributed \$1,860,103.05 to individuals through charitable trusts and \$4,997,484.22 to charities, for a total distribution in 2010 of \$6,857,587.27. On the investment side, our Growth Fund was up 11.24%, our Balanced Fund was up 9.74%, our Income Fund was up 9.47%, while our Fixed Income Fund was up 6.99%.

Our newest ministry, North Carolina Baptist Financial Services, also continues to thrive. Since its beginning in early 2009, more than 30 loans have closed totaling over \$18 million across 22 NC counties. The Church Growth Investment Fund, the investment arm of NCBFS that is the primary funding source of the loan ministry, has grown to over \$22 million. NCBFS has made loans to NC Baptist churches for expansion to include new sanctuaries, family life centers, educational buildings, land purchase and major renovation projects. Plans are under way to add an IRA option to the current line of investment services now available through the Church Growth Investment Fund.

Because our Lord gave His all that all people could experience salvation in Him, so the North Carolina Baptist Foundation is committed to helping all North Carolina Baptists share the Good News in perpetuity through good Christian estate planning. We also stand alongside our churches to partner with them in reaching people for Christ. Our commitment is to always be "All In" for the sake of our Savior and His call to salvation and faithfulness. We extend our heartfelt gratitude to all NC Baptist Churches who support our ministry through the Cooperative Program.

2010 Distributions





The Wide Reach of Christ's Love

We are grateful to be partners in ministry with North Carolina Baptists, extending God's compassionate arms of hope and healing to the thousands of hurting people we serve every year. We are thankful for the prayerfully given financial support of our Pastoral Care ministries, which is translated into changed lives and renewed faith in Jesus Christ. By working together in the name of Christ, we are making a real difference in God's kingdom.

CareNet of North Carolina is our statewide network of 22 faith-integrated counseling centers.

- A soldier who was injured in Afghanistan returned to Fort Bragg after being wounded. The depression that followed was heart breaking, as he felt disconnected from God and those he loved. With the compassionate help of a CareNet counselor, he gradually recovered and found God's love in new and life-giving ways. He shared with the counselor, "Thank you for helping me find my way through the dark times. I am so grateful to feel at peace and to know God's love on a deeper level than I ever imagined."
- In 2011, we are extending the reach of BSCNC churches through nearly 36,000 hours of faith-centered counseling to over 6,000 clients. We will serve nearly 3,000 N.C. Baptists and subsidize over \$684,000 in the costs of their counseling. Thanks to the Cooperative Program, fees are affordable and no one is turned away because they can't pay.

The Center for Congregational Health

provides consultation ministries and leadership training to churches and clergy, including many in the BSCNC.

- When a N.C. Baptist church nearly split, the deacons contacted us for assistance. We sent an experienced Baptist pastor, trained in conflict management, to re-establish trust and facilitate healing of broken relationships. Today the church is thriving and serving Christ locally and around the world.
- In 2011, thanks to the support of the Cooperative Program, we will help nearly 270 churches discover renewed hope, and provide professional training for almost 700 clergy and church leaders.

Our Chaplaincy and Pastoral Education

department provides training in Clinical Pastoral Education (CPE) to clergy and shares Christ's love through ministry to our patients and their families.

- A chaplain was called to comfort a severely burned man who was crying and alone. He felt hopeless, thinking God was punishing him for sins of his past. The chaplain listened with a heart of compassion and reassured him of God's love and forgiveness. The patient saw in the chaplain's eyes a reflection of God's grace – and seeds of hope were planted.
- In 2011, we will train nearly 40 ministers and seminary students in life-changing CPE and provide care to patients through over 40,000 ministry contacts.

The Mother's Day Offering



Teresa and Cody

North Carolina Baptists gave **\$616,532** to the Mother's Day Offering in FY 2011, helping patients in serious financial need pay their hospital bills in the name of Jesus Christ and His love! God uses every gift to draw people closer to Him in life-changing gratitude.

"My husband and I cried tears of relief when our child's hospital bill was paid by the Mother's Day Offering," said Teresa. "He lost his job and we've struggled hard. We were so worried and had nowhere to turn. We could never say thank you enough! My husband is young in the Lord and this really encouraged his faith. My son was amazed to see what God can do. We know this was God's love at work and we are forever grateful."

The Minister's Subsidy

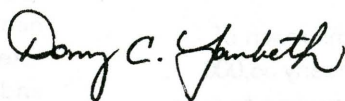
Ministers (and their families) who serve NC Baptist churches receive a subsidy of up to 25% for their hospital bills for care received at Wake Forest Baptist Medical Center. In FY 2011, the subsidy was \$110,651. This is made possible by the earnings of our WK McGee endowment fund with help as needed from the Mother's Day Offering.

Additional Highlights at Wake Forest Baptist Health

- Brenner Children's Emergency Department opened in 2011. This state-of-the-art pediatric ED expects to see over 31,000 patients annually.
- Wake Forest Baptist Medical Center is ranked among the nation's best hospitals in *US News and World Report* (2011-2012).
- The 2011-2012 "Best Doctors in America" listing includes 288 Wake Forest Baptist physicians.
- Information and Appointments: For an appointment with one of our physicians, please contact HEALTH ON-CALL at 800-446-2255 or 336-716-2255. Please visit www.wakehealth.edu, to learn more about our services.

Closing Words from the President

On behalf of the dedicated staff across the Wake Forest Baptist Health system, we are thankful to NC Baptists for their partnership in our sacred mission. God is at work through what we do together, changing lives and giving hope to those who entrust themselves to our care. Please call on us whenever we can serve you, your family or members of your church.



Donny C. Lambeth
President
North Carolina Baptist Hospital



Report for 2011 Book of Reports

Office of the GuideStone Team of the Baptist State Convention of NC, Inc.

During this past year the GuideStone Team of the Baptist State Convention of North Carolina worked closely with GuideStone Financial Resources of the Southern Baptist Convention to provide ministry to the more than 4,000 churches in our state convention. The following information is a summary of those joint efforts.

1. Retirement Planning

- Funding Rate Change--during this past year the annuity funding rate was changed for the first time in many years because of changing economic times. Numerous conferences were conducted to make sure that those persons nearing retirement were informed and given the opportunity to annuitize a portion or all of their account at the 6% rate.
- State Convention Protection Benefits—for 2010 the following disability and survivor benefits were in place for retirement participants—119 persons received \$641,666.85 in disability benefits and 38 deaths resulted in a distribution of \$409,544.94 to beneficiaries.
- GuideStone Funds---ranked number eight among their 212 peers by fi360 Fund Family Fiduciary Rankings. The Extended Duration Bond was ranked number 1 among its 114 peers.
- Guided Planning Services—the first full year of providing financial investment advice to retirement participants has been well-received.

2. Insurance

- New Health Care Reform Law—GuideStone continues to provide ongoing information to churches as the new health care reform law is developed for full implementation by 2014. Updates are regularly posted on the GuideStone web site.
- Multiple Health Care Insurance Options—churches are given multiple options as they are strongly encouraged to provide health care insurance as a benefit to staff.

3. Staff Compensation

- A new brochure entitled *Compensation Planning Guide* has provided church committees and staff with a tool to provide appropriate structure of equitable compensation administered in the most effective way to satisfy legal guidelines.
- The 2010 Compensation Study has been widely used to assist churches in the establishment of equitable compensation for church staff compared to churches of similar size.

4. Mission Dignity

- GuideStone Financial Resources in Dallas continues to provide financial assistance to those elderly ministers and widows of ministers who live under financial duress and need ongoing and/or one time assistance through Mission:Dignity. Over 200 persons from North Carolina received financial assistance through this ministry last year!

Finally, we are honored to serve all of our churches and their employees with appropriate information and products to meet their needs. Call the Baptist State Convention of NC at 1.800.395.5102 extensions 5594 or 5595, visit our Web site at www.ncbaptist.org, call GuideStone at 1.888.984.8433, or visit the GuideStone Web site at www.GuideStone.org for more information.

Johnny E. Ross
GuideStone State Representative
Baptist State Convention of North Carolina, Inc.

2011 Associational Annual Report
Biblical Recorder
“Connecting North Carolina Baptists”

Just because something is old does not mean that it cannot be new again. The *Biblical Recorder* has served as the news journal for North Carolina Baptists for 178 years. A publication that has communicated to six generations would certainly be considered old. But, this ministry did not survive by doing the same thing year after year. Newness has been embraced for every generation. Adjustments to cultural trends and human conditions have been the standard throughout our history.

We are an information conduit which serves in partnership with North Carolina Baptists as we fulfill the Great Commission of our Savior. Part of our information never changes – the truth of God’s word. But the news of how that scripture is being applied in our day is always fresh. The stories are more abundant than we can report and as exciting as the book of Acts.

This year the *Recorder* has experienced unusual change. We have a new editor, some new staff, a new logo design, a new web site, new printed edition design, along with a new vision of serving our Lord. We have stated our mission as three primary functions:

1. We will be biblical. We are committed to living up to the first word in our organization’s title.
2. We will focus on fulfilling the Great Commission. This is the assignment Jesus gave us before He left this earth, with the promise to return again some day. Until He returns we will be intentional with His final command.
3. We resolve to glorify God. He is glorified through the obedience of His children to every command of scripture.

The content of the print version and the content of our website reflects these three functions of our mission. Our commitment to this path is the best way we know to stand with the pastors, church leaders and churches of North Carolina as we serve Almighty God together.

We want to help your members be stronger in every way: stronger in their personal walk with God, stronger in their support of their church, stronger in their involvement with Baptist missions and ministries in North Carolina, stronger in their work with international missions. This blesses your church and honors God. Regardless of what you have perceived the Recorder to be in the past, this is our present focus and commitment. We want to help you!

But we cannot help you and your membership if the *Biblical Recorder* is not in your hands. So, subscribe today and encourage your fellow church members to subscribe, also. This will allow us to become a tool of information and connection in North Carolina. We will inform you and we will be an instrument of connecting you to your fellow Southern Baptist partners in Kingdom work.

The *Biblical Recorder* receives support through your gifts to the Cooperative Program, allowing you to subscribe at rates which are much lower than the actual cost of production. We are proud to be an agency of the Baptist State Convention of North Carolina since 1939. Thank you for your partnership in the Gospel of our Lord Jesus Christ. It is a privilege to join you in standing firm on the truth of scripture. “The grass withers, the flower fades, but the word of our God stands forever.” Isaiah 40:8, NKJV

Biblical Recorder
232 W. Millbrook Road
Raleigh, NC 27609
Phone: 919-847-2127

Gerald Hodges, chair, board of directors
K. Allan Blume, editor/president

Book-Link International, Inc., by Mr. Olin Williams

Prepared October 8, 2011

Thank you for the opportunity to share certain Book-Link information with you. I bring you greetings from a God-breathed ministry started by Mississippi Baptist Men in the mid-eighties under the leadership of the late Dr. Owen Cooper, a layman and twice president of the Southern Baptist Convention.

What is Book-Link International and for what reason was this ministry started? Book-Link is a Christian ministry that attempts to meet the need of two different people groups –the HAVES and the HAVE NOTS.

The HAVES are Southern Baptists that have printed Christian materials they presently are not using or will never use and would like to share these materials with others. The HAVE NOTS are fellow Baptists that do not have printed Christian materials with no way to obtain them either because they have no money to buy them or the materials are not available in bookstores where they live or these fellow Christians might be IMB missionaries that went to the field without some needed materials.

What kinds of materials are needed and why are these materials needed? In general, our fellow Christians living in foreign countries need the same kind of materials that we Americans need to study and prepare for our God-given area of services. Specifically, Book-Link needs Bibles, New Testaments, Bible Atlases, Bible Concordances, Bible Commentaries, Bible handbooks, Pastor's manuals, hymnals, Sunday School materials, Study Course Books covering many subjects, Illustrator, Open Windows, Baptist Adults, and books written by many, many Southern Baptists.

Why are these materials needed? People are LOST and need to be saved and people are saved and NEED to be developed as Christians.

(2 Peter 3:9) *The Lord is not slack concerning his promise, as some men count slackness; but is longsuffering to us-ward, not willing that any should perish, but that all should come to repentance.*

(2 Timothy 2:15) *Study to show thyself approved unto God, a workman that needeth not be ashamed, rightly dividing the word of truth.*

How does Book-Link know specifically who needs materials? People that need materials contact Book-Link by e-mail, letter, telephone, and in person.

If I have material to donate to Book-Link, how can I contact Book-Link?

Book-Link's e-mail is booklinkway1@windstream.net

Address: 100 Book-Link Way, Eubank, KY 42567

Telephone: 606.379.1734 or 606.379.2140

In person: 100 Book-Link Way, Eubank, KY

Is Book-Link International, Inc. a 501c3 Tax Exempt Ministry? Yes

If I donate materials and/or funds, will I receive a receipt? Yes

How are the materials shipped to recipients? In years past, Book-Link shipped materials through the US Postal System using mail bags each weighing approximately 50 pounds. Because this service is not available now to Book-Link, in 2008 we started shipping our materials in 20-foot ocean-going metal containers each weighing about 32,000 pounds to one location. A 20-foot container will hold about 750 boxes of the size we ship.

From 1988 to 2008, Book-Link shipped materials to 82 countries of the world. Since 2009, Book-Link has shipped 2 containers of materials to Zimbabwe and two containers to Zambia. We are presently preparing a container of materials to be shipped to a Baptist Seminary in India. We want to begin shipping materials to the Philippines as soon as details are worked out.

How many man-hours are required to select, pack, tape, wrap with clear plastic for waterproofing, tape again, and stack 750 boxes ready for loading into the container for shipping? It requires approximately 565 man-hours to complete this task.

How many man-hours are required to load 750 boxes into the 20-foot container? On the average it requires 20 people 1.5 hours or 30 man-hours.

What is Book-Link's most pressing need right now? It is for volunteers to prepare boxes of materials ready for loading into the container. Book-Link needs 100 volunteers to serve three hours for each to finalize the boxes ready for loading into the container.

Where does Book-Link get the materials, funds, and volunteers to operate this ministry? Baptists across the U. S. and some foreign countries

Does Book-Link have any employees or volunteers that are paid for their services? No

Occasionally, Book-Link will ship a book overseas and it will make its way back to Book-Link and then we will ship the book a second time to a foreign country.

Book-Link International, Inc. invites you to serve as a volunteer in this very important on-going ministry. Lives are being changed forever through this ministry and for this, we give God all the honor, praise, and glory.

ARTICLES OF INCORPORATION

NONPROFIT CORPORATION

OF

TUCKASEIGEE BAPTIST ASSOCIATION, INC.

I, the undersigned person of the age of eighteen years or more, acting as incorporator for the purpose of creating a nonprofit corporation under the laws of the State of North Carolina, as contained in Chapter 55A of the General Statutes of North Carolina, entitled "Nonprofit Corporation Act", and the several amendments thereto, do hereby set forth:

1. The name of the corporation is:

Tuckaseigee Baptist Association, Inc.

2. The period of duration of the corporation shall be: perpetual.

3. The purpose for which the corporation is organized is to engage in any lawful act or activity for which corporations may be organized under Chapter 55A of the General Statutes of North Carolina.

4. The Corporation shall have members as provided by the by-laws.

5. The street address and county of the initial registered office of the corporation is:

Lovedale Road, State Road No. 1790, P. O. Box 266, Sylva, Jackson County, North Carolina, 28779.

6. The name of the initial registered agent of the corporation at the address above is:

John Reid.

7. The number of directors constituting the initial board of directors shall be three, and the names and addresses of the persons who are to serve as directors until the first meeting of the corporation or until their successors are elected and qualified are:

Dennis Ensley

170 Fisher Circle
Sylva, NC 28779

Howard Buchanan

Rt. 2, Box 166
East Fork Road
Sylva, NC 28779

Lee Ensley

Rt. 3, Box 414
Sylva-Cullowhee Road
Sylva, NC 28779

8. The name and address of the incorporator is:

J. K. Coward, Jr.

43 W. Main Street
Sylva, NC 28779

9. Any other provisions which the corporation elects to include are attached.

IN TESTIMONY WHEREOF, I have hereunto set my hand, this the 20th day of May, 1994.

J. K. Coward, Jr., Incorporator
J. K. Coward, Jr., Incorporator

NORTH CAROLINA
JACKSON COUNTY

I, Jennie S. Miller, a Notary Public, do hereby certify that J. K. COWARD, JR., personally appeared and acknowledged the execution of the foregoing Articles of Incorporation.

IN TESTIMONY WHEREOF, I have hereunto set my hand and official seal, this the 20th day of May, 1994.

Jennie S. Miller
NOTARY PUBLIC

My Commission Expires:

9-9-97

f:/JENNIE/93J393.COR

BY-LAWS OF THE TUCKASEIGEE BAPTIST ASSOCIATION, INC.

ARTICLE 1. NAME

The name of the body shall be the Tuckaseigee Baptist Association, Incorporated.

ARTICLE II. OBJECTIVES

The purpose of the Association is to be a fellowship of churches on mission in our setting. The specific objectives of the Association are as follows:

1. To promote harmony, understanding and spiritual power between the churches.
2. To afford and promote a larger fellowship of Christians in the work of Christ.
3. To provide such programs, projects and organizations as will strengthen the churches and assist them in achieving their goals and objectives.
4. To discover needs which cannot be met effectively by churches individually and to coordinate the use of resources in meeting these needs.
5. To encourage support by every church for the mission causes of the Association, the North Carolina Baptist Convention, and the Southern Baptist Convention.

ARTICLE III. AUTHORITY

SECTION 1. The Association shall have the power to elect and install its officers in whatever manner the body may deem expedient.

SECTION 2. The Association shall have power to recommend measures of usefulness and guidance to our churches in matters of organization, ordinations and questions of doctrines and discipline,

SECTION 3. The Association shall have no power to infringe upon the right of local churches as sovereign and independent bodies.

ARTICLE IV. MEMBERSHIP

SECTION 1. The Association shall be composed of regularly constituted Baptist churches in cooperating fellowship with the Southern Baptist Convention and following the teachings of the New Testament.

SECTION 2. The Association shall be the sole judge of its membership and may receive or reject churches applying for membership therein at its pleasure. Churches applying for membership shall agree to come under the watchcare of the Association for one year. It is understood that during this period of watchcare the church shall be entitled to all rights and privileges of the Association except those of voting.

Applications for membership shall be presented to the Credentials Committee of the Association. The applications will consist of a letter from a constituted church stating their desire to affiliate with the Tuckaseigee Baptist Association. The Credentials Committee as a part of the review process may invite the requesting church to a conference to discuss its history, its mission strategy, and any other information that may be pertinent to the application. The Credentials Committee may then approve the application and recommend them to the Executive Committee. The Executive Committee may by a simple majority vote accept the requesting church to come under the watchcare of the Association for one year. It is suggested that any church under watchcare participate in the missions program of the Association. At the end of the year, the church may be voted in as a member of the Association with full privileges by a two-thirds vote of the messengers present and voting at the annual meeting of the Association, provided that the church submits an acceptable letter and at least one messenger be present at the meeting.

SECTION 3. Any church may withdraw from the Association at its pleasure and should notify the Association of this action in writing. Such action will be recognized by the Association at the next annual meeting.

SECTION 4. It shall be the duty of each church to furnish the Associational Clerk, before each annual session, an annual letter, the forms provided by the Associational Clerk, giving the information requested as is applicable to each church situation.

SECTION 5. The Association may withdraw from any church which has become unscriptural in its doctrine or practices by a two-thirds majority vote of the messengers present and voting at the annual meeting. Such vote is to be taken by written ballot.

ARTICLE V. MEETINGS

SECTION 1. The Association shall hold its annual meeting on Thursday and Friday preceding the third Sunday in October. Special meetings of the Association may be called by the Executive Committee provided two weeks written notice is given to the member churches.

SECTION 2. Each church shall be entitled to be represented at the annual meeting by the pastor and one additional

messenger. Churches which give to the association more than .5% of their undesignated receipts shall be entitled to an additional 2 messengers for every .5% of giving up to a total of 10 messengers for churches which give 2% of their undesignated giving."

SECTION 3. Churches are requested to elect their messengers and alternatives in conference to attend the annual meeting.

SECTION 4. In case of internal dissension in a church and two parties coming to the Association, each claiming to represent the church, neither party shall be seated until the question is decided as to which party is in union with the Association. The decision is to be made by a majority of the messengers present and voting.

ARTICLE VI. OFFICERS

SECTION 1. General officers of the Association shall be: Moderator, Vice Moderator, Clerk, Assistant Clerk, Treasurer, Assistant Treasurer, Historian, Parliamentarian, and Assistant Parliamentarian. Program leaders shall be Sunday School Director, Church Training Director, Music Director, Chairman of Evangelism Committee, Seminary Extension Director, Chairman of Mission Committee, Director of Missions, Trustees, Pastor Conference President, Youth Director, Stewardship Director, Vacation Bible School Director, Woman's Missionary Union Director, Brotherhood Director, Deacons Chairmen, Senior Adult Director, Singles Ministry Director, and such other officers as the Association may desire to elect.

Associational representatives will be elected for the following institutions and agencies: (1) Truett Camp, (2) Baptist Children's Homes, (3) Baptist Hospital, (4) North Carolina Baptist Homes, Inc. (Homes for the Aging), (5) Biblical Recorder, (6) Christian Education, (7) Annuity Board and other representatives as may be deemed appropriate and elected in the Association.

SECTION 2. With the exception of the Director of Missions and Trustees, the terms of office for all officers of the Association shall be for one year with the privilege of continuing re-election. The Moderator and Vice Moderator shall not be eligible for re-election but one year in succession. (1) The number of Trustees shall be three. (2) The term of service should be for three years, with the term of only one expiring each year. In the first election of Trustees, the term of service for one should be three years, another two years, and the other one year. (3) Upon the expiration of term of service, the Trustee may or may not be re-elected for another term of three years.

Each term of office shall begin with the close of the annual session. The Associational financial year will run from January 1 through December 31.

ARTICLE VII. DUTIES OF OFFICERS

SECTION 1. The **Moderator** shall preside and maintain the order of all meetings of the Association and Executive Committee. He shall serve as ex officio member of all committees of the Association.

He shall appoint the Committee on Committees and all other committees pertinent to the operation of the body not named by the Committee on Committees in its regular report.

SECTION 2. The **Vice Moderator** shall assist the Moderator and preside in the absence of, or at the pleasure of the Moderator.

SECTION 3. The **Clerk** shall keep a complete and accurate record of all transactions; shall prepare a "Book of Reports" to be distributed to messengers at the beginning of each day's session of the annual meeting; and shall cause to be printed minutes concerning the records made.

The Clerk shall distribute to the clerk of each church in the Association blanks for the preparation of the church letter as soon as they are received from the State Convention. This form is to be returned to the Clerk of the Association not later than four weeks prior to the meeting of the body or by the deadline set by the Clerk and Director of Missions. All program reports should be returned by the same date.

An **Assistant Clerk** shall work with the Clerk in preparing the "Book of Reports," the annual minutes and the registration of messengers at the annual meeting.

SECTION 4. The **Treasurer** shall receive and dispense by order of the Executive Committee of the Association while in session, the money of the treasury and make a complete report at the Annual meeting and a current report at each Executive Committee meeting.

An **Assistant Treasurer** shall be elected to assist the Treasurer by request and to serve in the event the Treasurer resigns or is ill or unable to function.

SECTION 5. The **Historian** shall keep the records of the Association up-to-date.

SECTION 6. The **Parliamentarian** shall upon the request of the presiding officer of the body, advise and assist the Association with respect to all matters involving Parliamentary Procedure.

An **Assistant Parliamentarian** shall be elected. The Parliamentarian and Assistant should always communicate with each other to ensure that this office is filled at each Associational Annual or Executive Committee meeting.

SECTION 7. The **Program Leaders** and the **Institutional Agency Representatives** shall perform all duties customary to

their titles and shall make a written report to the annual session of the Association.

SECTION 8. Trustees have no authority except by direction of the Association and are not personally bound by signatures but are to be the legal signees for the Association. Trustees represent the Association in legal matters. Trustees act on behalf of the Association in acquisition and disposal of Associational property.

They sign all deeds of conveyance, execute all notes, bonds or mortgages, intervene in all suits, by authority of the Association.

All persons dealing with the Trustees, as Associational officers, may rely upon any written resolution duly adopted by the Association or Executive Committee, directing and authorizing the Trustees to act in its behalf and certified by the Association Moderator and Clerk.

ARTICLE VIII. RULES OF ORDER

The business of the Association shall be conducted according to Robert's Parliamentary Practice or in a manner not contrary thereto.

ARTICLE IX. QUORUM

The quorum for the Annual Associational meeting or any special called meeting of the Association shall not be less than 25 percent of the member churches.

ARTICLE X. THE EXECUTIVE COMMITTEE

SECTION 1. The Executive Committee shall be composed of the General Officers and Program Leaders elected by the Association and the Pastor and one member from each church in the Association. No Pastor, by virtue of his being an Associational Officer or Program Leader shall be disqualified as a member of the Executive Committee, from representing the church or churches he may be serving in the Association. Twelve of these members shall constitute a quorum.

SECTION 2. It shall be the duty of the Executive Committee to act for the Association on matters arising when the Association is not in session and to make a report of all work to the next session of the Association. This body shall meet at a time and place designated by the Moderator on Monday following the first Sunday of each quarter except for the July quarter which shall meet on the second Monday of the month of July. Special meetings of the Executive Committee may be called by the Moderator with a one week notice to the churches.

SECTION 3. All vacancies occurring on committees or among elected officers shall be filled by the Executive Committee.

SECTION 4. In the event that a vacancy occurs with the Trustees, the Executive Committee should fill such vacancy for the remainder of the term.

ARTICLE XI. ASSOCIATIONAL STANDING COMMITTEES

SECTION 1. The Association shall have such standing committees as may be deemed necessary to promote efficiently the work of the Master in our midst. The terms of office for all committee members shall be for one year except where specifically stated otherwise.

SECTION 2. COMMITTEE ON COMMITTEES. It shall be the duty of this committee to nominate at the general meeting all standing committees as set forth under Article XI.

SECTION 3. THE NOMINATING COMMITTEE shall be composed of seven members. To this group the Directors of Sunday School, Discipleship Training, Woman's Missionary Union, Brotherhood and Music Ministry will be added.

It shall be the duty of this committee to nominate the Officers, Program Leaders and Institutional Agency Representatives. These nominees shall be notified in writing not less than one month prior to presenting of their names at annual session.

SECTION 4. THE ORDER OF BUSINESS COMMITTEE, composed of three members, shall plan the annual program of the Association and present it to the Executive Committee at its October meeting.

SECTION 5. THE CREDENTIALS COMMITTEE shall be composed of three pastors and two laymen. It shall examine applications of churches seeking admission into the Association in keeping with Article IV and make recommendation to the Association. It shall counsel with churches that are out of harmony of fellowship with the Association. It shall be responsible for registering messengers at the Annual Meetings."

SECTION 6. THE PLACE AND PREACHER COMMITTEE shall be composed of three members. The duties of this committee shall be to recommend the place or places for the following annual meeting and to recommend the preacher and alternate to deliver the annual sermon for the following year.

SECTION 7. THE RESOLUTIONS COMMITTEE shall be composed of three members. It is appointed by the Moderator at the October Executive Committee meeting. It shall be the duty of this committee to present suitable resolutions at the annual Associational meeting.

SECTION 8. THE MEMORIAL COMMITTEE shall be composed of three members. It shall be the duty of this committee to bring a report to the annual meeting of those listed by the member churches as deceased since the last annual

meeting and shall lead a memorial service in their memory.

SECTION 9. THE STEWARDSHIP COMMITTEE shall be composed of six members including the Treasurer of the Association. This committee shall: (a) present a Budget to the Association for the following year; (b) devise plans for raising the funds for the Associational Budget; (c) audit the finances and financial records of the Association annually and anytime there is a change of Treasurer or at the direction of the Association or the Executive Committee; (d) report all audits to the Annual Association Meeting.

SECTION 10. THE CONSTITUTION COMMITTEE shall be composed of three members and shall perform all duties specified in Article XV.

SECTION 11. THE ORDINATION COMMITTEE shall be composed of five designated Pastors and all other Pastors who desire to sit with the committee.

A. The committee serves on an advisory capacity only and serves at the request of the church from which the member is seeking ordination.

B. The committee should examine such candidates for the ministry as come before it as to their call and fitness for the gospel ministry and make such recommendations to the church as they feel led.

C. The committee should assist in arranging the proper service of ordination when such assistance is requested.

D. The Executive Committee should be informed regularly of the work of the committee.

E. Each church desiring to ordain a candidate is urged to consult with the committee, and shall give two weeks notice in which the committee is to do its work.

SECTION 12. THE EVANGELISM COMMITTEE. The duties of the committee shall be to direct and propose a perpetual program and spirit of evangelism in the Association. It shall arrange and direct all Associational-wide evangelistic activities.

SECTION 13. THE ASSOCIATIONAL MISSIONS DEVELOPMENT COUNCIL shall be composed of eight (8) members, nominated by the Associational Committee on Committees and elected by the Association at the annual meeting. The committee shall be: Missions Development Director, Promotion Director, Survey Director, Associational WMU Mission Action Director, Associational Brotherhood Director, Sunday School Outreach Director, Church Training Director, and Associational Deacons President. The Missions Development Director, Promotion Director, and Survey Director shall be elected for a three-year term, with one member named each year. The other five positions shall be filled by the person who is elected to fill those five Associational offices.

The duties of the AMDC are to lead the associational missions development in the five mission performance tasks: (1) call churches to be on missions; (2) train, develop, and encourage church and Associational workers; (3) provide resources and services to churches and leaders; (4) provide opportunities for working together in missions, ministry and growth; (5) establish and maintain appropriate communications and relationships with the community and the denomination.

SECTION 14. THE BUILDING AND GROUNDS COMMITTEE shall be comprised of three members. The committee shall be responsible for and in charge of the upkeep and repairs of the Associational building, grounds, and equipment.

SECTION 15. THE PERSONNEL COMMITTEE

A. The Committee shall be composed of 7 members of which 3 are pastors.

B. They shall recommend policies and procedures for the selection, supervision and termination of Associational staff personnel. Those policies and procedures shall be approved by the Association.

C. Prepare and maintain an organizational manual relation to the Association's staff personnel.

D. Develop and recommend to the association policies and procedures for paid and volunteer staff personnel.

E. Develop policies and procedures regarding continuing education and development for the Director of Missions and other Associational staff.

F. When a staff vacancy occurs, other than the DOM, they shall serve as the search committee. When a DOM vacancy occurs, they shall nominate a search committee and present it to the Executive Committee.

G. The Personnel Committee shall handle grievances as outlined in the grievance policy.

ARTICLE XII. THE ASSOCIATIONAL COUNCIL

The ASSOCIATIONAL COUNCIL shall be composed of the Director of Missions, the Moderator, the Vice Moderator, the Program Leaders: Sunday School, Discipleship Director, Woman's Missionary Union, Brotherhood Director, Chairman of Deacons, Missions Development Director, Chairman of Evangelism, Chairman of the Finance Committee, Vacation Bible School Director, Youth Director, Director of the Singles, Director of the Senior Adults, and Music Director. The Director of Missions is to serve as Chairman and a secretary shall be elected from the group.

The purpose of the council is to coordinate the planning of the various programs of the Association, to develop an Associational calendar, and to give mutual support to the various organization and program units in carrying out their assignments.

The council shall meet quarterly.

ARTICLE XIII. THE ASSOCIATIONAL PASTORS' CONFERENCE

The Associational Pastors' Conference provides regular meetings for the Baptist ministers of the Association. The purpose of the conference is for fellowship and mutual support, for doctrinal and professional discussion and for promotion of church, Associational and other denominational programs. The conference is not an administrative or executive body.

ARTICLE XIV. JOB DESCRIPTION, DIRECTOR OF MISSIONS

SECTION 1. Title and Functions.

A. Position Title. This position shall be known as the Director of Missions for the Tuckasegee Baptist Association.

B. Basic Functions. The Director of Missions shall serve as minister to the churches and church leaders of the Tuckasegee Baptist Association, as mission strategist for the Association, as chief administrative officer for the Association, and as a general leader of the Association.

SECTION 2. Responsibilities.

A. Minister to Churches and Church Leaders.

1. The Director of Missions shall serve as pastor to the pastors of the Association. Upon request, the Director of Missions shall provide counseling and consultation for pastors regarding spiritual, vocational, congregational, personal or family concerns. The Director of Missions shall be available to assist pastors considering a move, shall orient new pastors to the Association, shall develop systems of pastoral support and fellowship, and shall provide growth opportunities for pastors.

2. Upon request, the Director of Missions shall assist and counsel pastors and church leaders regarding ministries, programs and procedures within the churches, including but not limited to building planning, budget procedures, long range or strategy planning, curriculum evaluation or review, issues of church policy and organization, church-community surveys, outreach, and spiritual growth.

3. Upon request, the Director of Missions shall assist and counsel churches regarding the calling of pastors or church staff, conflicts between a pastor and church, or conflicts within a church's fellowship. The Director of Missions shall assist churches without a pastor in their ministries and programs at their request and shall provide advice for persons considering a Christian vocation.

4. The Director of Missions shall be available upon request to preach or teach in and for churches on such occasions as revivals, pulpit supply, study courses, stewardship or missions emphasis, promotion or recognition assemblies and services, special day addresses, Vacation Bible School, and similar events.

5. The Director of Missions shall take the initiative to regularly visit churches for worship and fellowship, taking care to treat all churches as equal partners in the Association.

6. The Director of Missions shall develop opportunities to foster fellowship and mutual commitment between and among the churches.

B. Mission Strategist.

1. The Director of Missions shall encourage churches to develop and maintain a missions perspective and to extend their ministries and outreach beyond the local church field and community through broader involvement and cooperation with other churches in missions activities.

2. The Director of Missions shall interpret to the churches the needs of persons and groups within the Association's area and shall lead the Association to start new churches or ministry activities appropriate to the needs.

3. The Director of Missions shall encourage and lead volunteer involvement in mission activities beyond the Association's boundaries, such as home and foreign missions partnerships and disaster relief.

4. The Director of Missions shall interpret to the Association the mission work of the churches and conventions of the denomination at the state and national levels and shall encourage churches to support such work with their prayers, finances and personal commitment.

C. Chief Administrative Officer.

1. The Director of Missions shall administer all policies and instructions committed to that office by the Association in annual session or by the Executive Committee.

2. The Director of Missions shall work with the Executive Committee to plan, organize, coordinate, communicate and evaluate the total work of the Association.

3. The Director of Missions shall work with and assist Associational officers, committees and program leaders to implement the specific objectives of the Association and to communicate these activities to the churches and encourage their involvement.

4. The Director of Missions shall serve as an ex officio member of all committees and program departments of the Association.

5. The Director of Missions shall publish a regular Associational news medium to promote the work and fellowship of the Association among the churches and shall otherwise communicate with the churches as required.

6. The Director of Missions shall supervise the Associational office staff and any volunteers or other paid employees, full or part time, who are directly involved in ministries or activities sponsored by the Association.

7. The Director of Missions shall act as office and property manager and purchasing agent for the Association in all matters not assigned to the Trustees of the Association.

D. General Leader of the Association.

1. The Director of Missions shall interpret the work of the Association in the churches.

2. The Director of Missions shall maintain relationships with pertinent Baptist conventions and bodies, and especially with those denominational offices charged with Associational development and support, informing those bodies of the needs and potentialities in the Association and interpreting the overall work of the denomination to the churches.

3. The Director of Missions shall relate to other Christian and service organizations, such as local relief and assistance groups, hospital chaplaincy programs, groups that minister to the homebound or terminally ill, ministerial conferences or support groups, and similar organizations, as appropriate.

4. The Director of Missions shall relate to and represent the work of the Association to various business, social, educational, governmental and civic groups.

5. The Director of Missions shall act as chief public relations and information officer for the Association, promoting its work to the general public through the various communications media and responding to inquiries and requests for information as required.

SECTION 3. Terms of Employment.

A. Employment. The Director of Missions is employed by the Tuckasee Baptist Association.

B. Call, Termination and Interim.

1. A person shall be called to the office of Director of Missions according to the following procedures:

a. When a vacancy occurs in the office of Director of Missions, the Personnel Committee shall nominate a search committee to be elected by the Executive Committee. Election of the search committee shall take place within 30 days of the occurrence of the vacancy. If a regular meeting of the Executive Committee is not scheduled within 30 days, a special meeting shall be called by the Moderator. Executive Committee members shall be given two weeks' written notice of the names of the nominees to serve on the search committee and the date, time and place of the meeting.

b. Once elected, the search committee shall solicit and screen candidates according to qualifications and procedures which the committee shall determine. The search committee shall recommend and present one candidate for election by the Association.

c. Election of the candidate by the Association shall take place within 30 days of the search committee's decision to recommend. If the annual session of the Association is not scheduled within 30 days, a special session of the Association shall be called by the Moderator. The Association shall be given two weeks' written notice of the name of the candidate and the date, time, and place of the meeting.

d. Election of the candidate shall be by majority vote. If the candidate fails to receive a majority vote, the search committee shall be immediately dissolved and the Personnel Committee shall begin the process over again.

2. The term of service of the Director of Missions shall be indefinite. Employment of the Director of Missions may be terminated according to the following procedures:

a. The Director of Missions may resign by giving written notice 60 days in advance. The resignation may be accepted on behalf of the Association by the Executive Committee in regular or called session. By mutual agreement of the Director of Missions and the Executive Committee, the period of 60 days' notice may be waived.

b. The Director of Missions may be involuntarily terminated by the Association in annual or called session.

(1) No final action to terminate the Director of Missions shall occur unless both the Director of Missions and the Association have endeavored to resolve any existing conflict by lesser means. In addition, no final action to terminate the Director of Missions shall occur without prior investigation by the Personnel Committee according to established grievance procedures. The Personnel Committee shall then make a report of its findings to the Association. The Association shall consider, but shall not be bound by or required to follow, the recommendations of the Personnel Committee. If such an investigation and report has not occurred, any action to terminate the Director of Missions shall be referred to the Personnel Committee for investigation before final action is taken.

(2) Action by the Association to terminate the Director of Missions, whether in annual or called session, shall require 30 days' written notice to the Association following completion of the Personnel Committee's investigation. Action to terminate shall be by majority vote.

(3) If the Association in session votes to terminate, the Director of Missions shall receive full pay and benefits for a period of 60 days following the effective date of the termination.

3. When a vacancy occurs in the office of Director of Missions, the Executive Committee may elect an Interim

Director of Missions according to the following procedure:

a. The Personnel Committee shall recommend a candidate, negotiate terms of employment, and present the recommendations to the Executive Committee for approval. Such election may take place at the same time and in the same manner as election of the search committee, or at any other appropriate time.

b. The Personnel Committee shall supervise the work of the Interim Director of Missions. Authority to extend, terminate, or otherwise change the terms of employment of the Interim Director of Missions shall be retained by the Executive Committee.

C. Accountability.

1. The Director of Missions shall be supervised by the Personnel Committee acting on behalf of the Association.

2. The Personnel Committee shall arrange for an annual evaluation of the Director of Missions.

3. The Personnel Committee shall establish a grievance policy to provide an orderly and appropriate process to hear grievances and complaints against the Director of Missions by members or churches of the Association.

D. Pay and Benefits.

1. Salary, retirement, insurance and other financial benefits for the Director of Missions shall be proposed by the Budget and Finance Committee and established by the Association in the annual budget. The Budget and Finance Committee shall solicit recommendations concerning pay and benefits for the Director of Missions from the Personnel Committee, but shall not be bound to accept those recommendations.

2. Travel allowance for the Director of Missions shall be deemed by the Association to be a business expense and not a personal benefit for the Director of Missions.

3. The Director of Missions shall receive two weeks paid vacation annually. The period of two weeks shall incorporate ten working days, including two Sundays. Unused vacation shall not accrue to the following year.

4. The Director of Missions shall receive sick leave at the rate of one day per month, accruing on the first day of the month, not to exceed 120 working days. Additional sick leave may be credited against future months. If the Director of Missions is involuntarily terminated by the Association, any unused sick leave accrued shall be financially reimbursed to the Director of Missions in addition to the 60 days' pay and benefits required by the act of termination.

5. The Director of Missions shall be granted one day off each week in addition to Saturday.

6. The following holidays shall be observed: New Year's Day, Easter Monday, Memorial Day, July 4, Labor Day, Thanksgiving Thursday and Friday, and December 25 and 26 at Christmas.

7. The Association acknowledges the flexibility of schedule required by the Director of Missions. The Director of Missions' time shall be organized in a professional manner, with the work schedule devoted to activities that will benefit the work of the Association, whether in the office or on the field and whether during the normal work day or at night. The Director of Missions shall establish office hours for the office secretary and shall be available, either through personal office hours or some other established procedure, to any in the Association needing assistance.

8. The Director of Missions may attend denominational conventions and meetings, continuing education and professional development events, and other assemblies and conferences pertaining to the work of the office. The Association through its annual budget may reimburse the Director of Missions for expenses incurred while attending such meetings.

9. The Director of Missions may use up to three weeks of paid leave annually to lead or participate in revivals, world missions conferences, and similar meetings outside the Association, which result in an honorarium or other reimbursement above and beyond expenses. The Director of Missions may lead revivals and conferences within the Association as schedule permits, such activities being included in the job responsibility of minister to the churches of the Association.

10. The Director of Missions may serve as interim pastor of a church or churches in the Association. Such activity may not exceed three months in a given calendar year without prior approval of the Personnel Committee. The Director of Missions may engage in pulpit supply and similar activities as schedule permits, such activities being included in the job responsibility of minister to the churches of the Association.

11. The Director of Missions may lead or participate in mission trips, mission partnerships, disaster relief, and other direct mission opportunities outside the Association, such activities being included in the job responsibility of mission strategist for the Association. Such activities may not exceed three weeks in a given calendar year without prior approval of the Personnel Committee.

12. The Director of Missions shall keep a record of leave and time spent off the Associational field, including vacation, sick leave, conventions and conferences, continuing education events, revivals and similar meetings, and mission trips. The record shall be submitted to and maintained by the Treasurer of the Association.

13. The Director of Missions shall be free to use off duty time to engage in personal activities and pursuits. Such activities shall not interfere with the professional responsibilities or activities and meetings that require the presence of the Director of Missions. The Director of Missions shall be aware that all personal activities reflect on the office and the job

responsibility of general leader of the Association.

14. No honorarium shall be expected or required for any service performed by the Director of Missions in conjunction with official duties. However, any individual, group or church is free to present an honorarium if they so desire, and such may be retained by the Director of Missions and not submitted to the Association.

SECTION 4. Adoption.

A. This job description supersedes, repeals and takes the place of any conflicting articles or statements in this Constitution or other documents of the Association.

B. The Personnel Committee shall be responsible to maintain, update and revise this job description as required, making recommendations to the Association for approval as they are needed.

ARTICLE XV. AMENDMENTS

The constitution may be amended at any annual meeting of the Association by a two-thirds majority of the messengers present and voting, provided the amendment has been presented to the Constitutional Committee at least 10 days prior to the annual meeting and presented to the Association in printed form on the first day of the annual meeting to be voted on the second day.

ARTICLE XVI. NON-PROFIT STATUS

The Tuckasegee Baptist Association, Inc. is organized exclusively for charitable, religious, and educational purposes, including, for such purposes, the making of distributions to organizations that qualify as exempt organizations under Section 501(c)(3) of the Internal Revenue Code of 1986.

No part of the Tuckasegee Baptist Association, Inc. shall inure to the benefit of its' members, directs, officers, or other persons except that the organization shall be authorized and empowered to pay reasonable compensation for services rendered and to make payments and distributions in furtherance of the exempt purposes of the organization.

In the event of dissolution, the residual assets of the Tuckasegee Baptist Association, Inc. will be turned over to one or more organizations with similar purposes which are exempt as organizations described in Section 501(c)(3) of the Internal Revenue Code of 1986.

DIGEST OF CHURCH PROFILES

32 of 36 Association member churches (89%) completed Church profiles for 2011.
 31 of 36 Association member churches (87%) completed Church profiles for 2010.
 30 of 36 Association member churches (84%) completed Church profiles for 2009.

	2009	2010	2011
Total Baptisms	145	95	78
Other Additions	94	126	106
Resident Membership	3,639	3,801	5,251
Average Sunday School Attendance	1,125	1,014	1,254
VBS Enrollment	1,136	1,253	1,296
WMU Enrollment	231	203	176
Brotherhood Enrollment	66	24	47
Total Receipts	\$2,380,536	\$2,069,187	\$2,281,543
Cooperative Program	\$86,745	\$67,837	\$73,273
Associational Missions	\$38,086	\$36,537	\$38,089
North Carolina State Missions	\$28,851	\$35,235	\$34,742
Annie Armstrong Offering	\$22,548	\$15,335	\$20,387
Lottie Moon Offering	\$37,376	\$28,835	\$28,840
Other SBC Missions	\$18,691	\$15,880	\$24,011
Non-SBC Missions	\$92,229	\$114,701	\$137,312
Total Missions	\$324,526	\$314,360	\$356,654

Congregation Summary

Tuckasegee Association

Congregation	C/M	TB	OA	TM	SSE	SSA	VBS	DT	MM	WMU	BM	TRE	CP	AG	TME
Big Ridge, Glenville	Church														
Buff Creek, Sylva	Church	3	5	266		45	112						2,208	1,200	13,111
Calvary, Sylva	Church	7	2	135		23	40					3,100	250	100	3,275
Cashiers, Cashiers	Church	9		97		77	147			15	20	201,592	10,000	3,000	45,720
Cullowhee Valley, Cullowhee	Church			35		11						16,356		180	3,592
Dicks Creek, Whittier	Church	1		78		42						10,000		300	300
East Fork, Sylv	Church		5	77		20						40,074	600	2,400	12,263
El Centro del Senor	Church	3		38		38						13,466	1,348	404	4,410
Faith, Sylva	Church		1	90		19	35				3	71,523	3,267	2,188	10,644
Greens Creek, Sylva	Church			129		22				17		51,758	4,800	2,400	10,652
Hamburg, Glenville	Church	2	2	225		35	30				10	93,861			16,152
Hyatt's Chapel, Whittier	Church			75		25	30					44,743	600	600	3,000
Jarrett Memorial, Dillsboro	Church	3	2	174		15	44					21,028	300	300	1,844
La Primera Iglesia Bautista Del Amor	Church	1		22		5						5,663			
Liberty, Syl	Church														
Lighthouse, Sylva	Church	18	21	350		115	138				2	394,391	3,376	701	29,777
Little Savannah, Sylva	Church		2	202		30	27					34,945	400	500	4,191
Locust Field, Sylva	Church	3	2	160		30	57			30		67,693	465	900	8,632
Long Branch Missionary, Sylva	Church	5		168		31	50					39,212		400	8,554
Lovedale, Sylva	Church		14	219		75	72			15		117,433	9,819	9,006	38,000
Moses Creek, Cullowhee	Church		2	100		35						40,582			11,278
Mount Pleasant, Sylv	Church			350		20						20,512			
New Hope, Sylva	Church	3	3	422		83	185			47		131,484	3,900	8,400	20,420
New Savannah, Sylva	Church			36		17	19					26,701		100	100
Ochre Hill, Sylva	Church	4	5	338		46	55			6		89,621	6,003	1,200	10,389
Old Savannah, Sylva	Church														
Pine Creek, Cullowhee	Church		5	143		45	25					3,000			
Promise Land, Cullowhee	Church	4		50								20,203			510
Rockdale, Whittier	Church		2	136		30	53					45,528	2,205	2,100	7,878
Scotts Creek, Sylva	Church	2	25	456		70	82			40	12	303,505	17,704	1,200	26,752
Shoal Creek, Whittie	Church														
Sols Creek, Tuckasegee	Church														
Speedwell	Church	2	1	228		25	20					17,030			1,211
Unity, Cullowhee	Church					15									
Webster, Webster	Church	7	7	409		200	75					339,734	5,900		62,668

TM - Total Membership
TB - Total Baptism
OA - Other Additions
SSE - Total SS Enrollment

SSA - SS Avg. Weekly Attendance
VBS - Vacation Bible School Enrollment
DTEN - Total DT Enrollment/Participation
MM - Total Music Ministry Enrollment

WMU - Total WMU Enrollment
BM - Total Brotherhood Enrollment
DTEN - Total DT Enrollment/Participation
(Undesignated+Designated+Other)

CP - Total Cooperative Program
AG - Total Association Missions
TME - Total Mission Expenditures

Tuckaseigee Association

TM - Total Membership
TB - Total Baptism
OA - Other Additions
SSE - Total SS Enrollment

SSA - SS Avg. Weekly Attendance
VBS - Vacation Bible School Enrollment
DTEN - Total DT Enrollment/Participation
MM - Total Music Ministry Enrollment

WMU - Total WMU Enrollment
BM - Total Brotherhood Enrollment
TRE - Total Receipts
(Undesignated+Designated+Other)

CP - Total Cooperative Program
AG - Total Association Missions
TME - Total Mission Expenditures

BAPTISM INFORMATION

Tuckaseigee Association

Total - Total Baptisms	0-5 - Baptisms Under Age 6	6-8 - Baptisms Ages 6-8	9-11 - Baptisms Ages 9- 11	12-17 - Baptisms Ages 12-17	18-29 - Baptisms Ages 18-29	30-59 - Baptisms Ages 30-59	60+ - Baptisms Ages 60 and Up		
CONGREGATION	Church/Mission	Total	0-5	6-8	9-11	12-17	18-29	30-59	60+
Big Ridge, Glenville	Church	0	0	0	0	0	0	0	0
Buff Creek, Sylva	Church	3	0	0	2	0	0	1	0
Calvary, Sylva	Church	7	0	0	5	1	0	1	0
Cashiers, Cashiers	Church	9	0	0	7	2	0	0	0
Cullowhee Valley, Cullowhee	Church	0	0	0	0	0	0	0	0
Dicks Creek, Whittier	Church	1	0	0	0	0	0	1	0
East Fork, Sylv	Church	0	0	0	0	0	0	0	0
El Centro del Senor	Church	3	0	0	1	0	0	2	0
Faith, Sylva	Church	0	0	0	0	0	0	0	0
Greens Creek, Sylva	Church	0	0	0	0	0	0	0	0
Hamburg, Glenville	Church	2	0	0	0	1	1	0	0
Hyatt's Chapel, Whittier	Church	0	0	0	0	0	0	0	0
Jarrett Memorial, Dillsboro	Church	3	0	0	2	0	1	0	0
La Primera Iglesia Bautista Del Amor	Church	1	0	0	0	0	0	1	0
Liberty, Syl	Church	0	0	0	0	0	0	0	0
Lighthouse, Sylva	Church	18	0	0	7	3	6	2	0
Little Savannah, Sylva	Church	0	0	0	0	0	0	0	0
Locust Field, Sylva	Church	3	0	0	0	1	2	0	0
Long Branch Missionary, Sylva	Church	5	0	0	2	0	1	2	0
Lovedale, Sylva	Church	0	0	0	0	0	0	0	0
Moses Creek, Cullowhee	Church	0	0	0	0	0	0	0	0
Mount Pleasant, Sylv	Church	0	0	0	0	0	0	0	0
New Hope, Sylva	Church	3	0	0	1	2	0	0	0
New Savannah, Sylva	Church	0	0	0	0	0	0	0	0
Ochre Hill, Sylva	Church	4	0	0	3	1	0	0	0
Old Savannah, Sylva	Church	0	0	0	0	0	0	0	0
Pine Creek, Cullowhee	Church	0	0	0	0	0	0	0	0
Promise Land, Cullowhee	Church	4	0	0	0	2	2	0	0
Rockdale, Whittier	Church	0	0	0	0	0	0	0	0
Scotts Creek, Sylva	Church	2	0	0	0	0	2	0	0
Shoal Creek, Whittie	Church	0	0	0	0	0	0	0	0
Sols Creek, Tuckasegee	Church	0	0	0	0	0	0	0	0
Speedwell	Church	2	0	0	6	6	0	214	0
Unity, Cullowhee	Church	0	0	0	0	0	0	0	0

Total - Total Baptisms	0-5 - Baptisms Under Age 6	6-8 - Baptisms Ages 6-8	9-11 - Baptisms Ages 9- 11	12-17 - Baptisms Ages 12-17	18-29 - Baptisms Ages 18-29	30-59 - Baptisms Ages 30-59	60+ - Baptisms Ages 60 and Up		
CONGREGATION	Church/Mission	Total	0-5	6-8	9-11	12-17	18-29	30-59	60+
Webster, Webster	Church	7	0	0	2	0	5	0	0
Wilkesdale, Sylva	Church	1	0	0	0	0	0	1	0
Totals		78	0	0	38	19	20	225	0

Sunday School Info - Enrollment

Tuckaseegee Association

Congregation	C/M	TOTAL SS ENROLL.	PRE 0 -5	CHILDREN 6-11	YOUTH 12-17	ADULTS 18-24	ADULTS 25-34	ADULTS 35-54	ADULTS 55-64	ADULTS 65-Up	General Officers	Other Bible Study	SS AVG	Non Cong. Members	VBS
Big Ridge, Glenville	Church														
Buff Creek, Sylva	Church												45		112
Calvary, Sylva	Church												23		40
Cashiers, Cashiers	Church												77		147
Cullowhee Valley, Cullowhee	Church												11		
Dicks Creek, Whittier	Church												42		
East Fork, Sylv	Church												20		
El Centro del Senor	Church												38		
Faith, Sylva	Church												19		35
Greens Creek, Sylva	Church												22		
Hamburg, Glenville	Church												35		30
Hyatt's Chapel, Whittier	Church												25		30
Jarrett Memorial, Dillsboro	Church												15		44
La Primera Iglesia Bautista Del Amor	Church												5		
Liberty, Syl	Church														
Lighthouse, Sylva	Church												115		138
Little Savannah, Sylva	Church												30		27
Locust Field, Sylva	Church												30		57
Long Branch Missionary, Sylva	Church												31		50
Lovedale, Sylva	Church												75		72
Moses Creek, Cullowhee	Church												35		
Mount Pleasant, Sylv	Church												20		
New Hope, Sylva	Church												83		185
New Savannah, Sylva	Church												17		19
Ochre Hill, Sylva	Church												46		55
Old Savannah, Sylva	Church														
Pine Creek, Cullowhee	Church												45		25
Promise Land, Cullowhee	Church														
Rockdale, Whittier	Church												30		53
Scotts Creek, Sylva	Church												70		82
Shoal Creek, Whittie	Church														
Sols Creek, Tuckasegee	Church														
Speedwell	Church												25		20

Congregation	C/M	TOTAL SS ENROLL.	PRE 0 -5	CHILDREN 6-11	YOUTH 12-17	ADULTS 18-24	ADULTS 25-34	ADULTS 35-54	ADULTS 55-64	ADULTS 65-Up	General Officers	Other Bible Study	SS AVG	Non Cong. Members	VBS
Unity, Cullowhee	Church												15		
Webster, Webster	Church												200		75
Wilkesdale, Sylva	Church												10		
TOTALS													1,254		1,296

Tuckaseigee Association

Int'l - International

US/Candata - United States and Canada

59

MISSIONS EDUCATION

Tuckaseigee Association

Items Reported:

WMU - Tot. WMU Enroll. W 6-11 - wmu 6-11 W 18+ - wmu Adults 18+ Bro - Total Brotherhood Enroll. B 12-17 - Brotherhood Ages 12-17 Other - Other Missions Education
W Pre - WMU Birth-5 W 12-17 - WMU 12-17 W Lead - WMU Lead. Trn. B 6-11 - Brotherhood Ages 6-11 B 18+ - Brotherhood Ages 18+

CONGREGATION	Church/Mission	WMU	W Pre	W 6-11	W 12-17	W 18+	W Lead	W Miss.	Bro.	B 6-11	B 12-17	B 18+	Other
Big Ridge, Glenville	Church	0	0	0	0	0	0	0	0	0	0	0	0
Buff Creek, Sylva	Church	0	0	0	0	0	0	0	0	0	0	0	0
Calvary, Sylva	Church	0	0	0	0	0	0	0	0	0	0	0	0
Cashiers, Cashiers	Church	15	0	0	0	0	0	0	20	0	0	0	0
Cullowhee Valley, Cullowhee	Church	0	0	0	0	0	0	0	0	0	0	0	0
Dicks Creek, Whittier	Church	0	0	0	0	0	0	0	0	0	0	0	0
East Fork, Sylv	Church	0	0	0	0	0	0	0	0	0	0	0	0
El Centro del Senor	Church	0	0	0	0	0	0	0	0	0	0	0	0
Faith, Sylva	Church	0	0	0	0	0	0	0	3	0	0	0	0
Greens Creek, Sylva	Church	17	0	0	0	0	0	0	0	0	0	0	0
Hamburg, Glenville	Church	0	0	0	0	0	0	0	10	0	0	0	18
Hyatt's Chapel, Whittier	Church	0	0	0	0	0	0	0	0	0	0	0	0
Jarrett Memorial, Dillsboro	Church	0	0	0	0	0	0	0	0	0	0	0	0
La Primera Iglesia Bautista Del Amor	Church	0	0	0	0	0	0	0	0	0	0	0	0
Liberty, Syl	Church	0	0	0	0	0	0	0	0	0	0	0	0
Lighthouse, Sylva	Church	0	0	0	0	0	0	0	2	0	0	0	0
Little Savannah, Sylva	Church	0	0	0	0	0	0	0	0	0	0	0	0
Locust Field, Sylva	Church	30	0	0	0	0	0	0	0	0	0	0	0
Long Branch Missionary, Sylva	Church	0	0	0	0	0	0	0	0	0	0	0	0
Lovedale, Sylva	Church	15	0	0	0	0	0	0	0	0	0	0	0
Moses Creek, Cullowhee	Church	0	0	0	0	0	0	0	0	0	0	0	0
Mount Pleasant, Sylv	Church	0	0	0	0	0	0	0	0	0	0	0	0
New Hope, Sylva	Church	47	0	0	0	0	0	0	0	0	0	0	0
New Savannah, Sylva	Church	0	0	0	0	0	0	0	0	0	0	0	0
Ochre Hill, Sylva	Church	6	0	0	0	0	0	0	0	0	0	0	0
Old Savannah, Sylva	Church	0	0	0	0	0	0	0	0	0	0	0	0
Pine Creek, Cullowhee	Church	0	0	0	0	0	0	0	0	0	0	0	0
Promise Land, Cullowhee	Church	0	0	0	0	0	0	0	0	0	0	0	0
Rockdale, Whittier	Church	0	0	0	0	0	0	0	0	0	0	0	0
Scotts Creek, Sylva	Church	40	0	0	0	0	0	0	12	0	0	0	0
Shoal Creek, Whittie	Church	0	0	0	0	0	0	0	0	0	0	0	0

CONGREGATION	Church/Mission	WMU	W Pre	W 6-11	W 12-17	W 18+	W Lead	W Miss.	Bro.	B 6-11	B 12-17	B 18+	Other
Sols Creek, Tuckasegee	Church	0	0	0	0	0	0	0	0	0	0	0	0
Speedwell	Church	0	0	0	0	0	0	0	0	0	0	0	0
Unity, Cullowhee	Church	0	0	0	0	0	0	0	0	0	0	0	0
Webster, Webster	Church	0	0	0	0	0	0	0	0	0	0	0	30
Wilkesdale, Sylva	Church	6	0	0	0	0	0	0	0	0	0	0	0
Totals		176	0	0	0	0	0	0	47	0	0	0	48

Financial - General
Tuckaseigee Association

CONGREGATION	CHURCH / MISSION	UNDESIGNATED RECEIPTS	DESIGNATED RECEIPTS	OTHER RECEIPTS	TOTAL RECEIPTS	PROPERTY VALUE	CONGREGATIONAL DEBT
Big Ridge, Glenville	Church						
Buff Creek, Sylva	Church						
Calvary, Sylva	Church	3,100			3,100		
Cashiers, Cashiers	Church	198,561	3,031		201,592		
Cullowhee Valley, Cullowhee	Church	16,206	150		16,356		
Dicks Creek, Whittier	Church	10,000			10,000		
East Fork, Sylv	Church	40,074			40,074		
El Centro del Senor	Church	13,466			13,466		
Faith, Sylva	Church	62,431	9,092		71,523		
Greens Creek, Sylva	Church	47,487	4,271		51,758		
Hamburg, Glenville	Church	77,459	16,402		93,861		
Hyatt's Chapel, Whittier	Church	44,743			44,743		
Jarrett Memorial, Dillsboro	Church	20,864	164		21,028		
La Primera Iglesia Bautista Del Amor	Church	5,663			5,663		
Liberty, Syl	Church						
Lighthouse, Sylva	Church	283,557	110,834		394,391		
Little Savannah, Sylva	Church	34,945			34,945		
Locust Field, Sylva	Church	63,175	4,518		67,693		
Long Branch Missionary, Sylva	Church	32,754	6,458		39,212		
Lovedale, Sylva	Church	117,433			117,433		
Moses Creek, Cullowhee	Church	40,582			40,582		
Mount Pleasant, Sylv	Church	20,512			20,512		
New Hope, Sylva	Church	131,484			131,484		
New Savannah, Sylva	Church	26,701			26,701		
Ochre Hill, Sylva	Church	60,258	29,363		89,621		
Old Savannah, Sylva	Church						
Pine Creek, Cullowhee	Church		3,000		3,000		
Promise Land, Cullowhee	Church	19,288	915		20,203		
Rockdale, Whittier	Church	41,428	4,100		45,528		

CONGREGATION	CHURCH / MISSION	UNDESIGNATED RECEIPTS	DESIGNATED RECEIPTS	OTHER RECEIPTS	TOTAL RECEIPTS	PROPERTY VALUE	CONGREGATIONAL DEBT
Scotts Creek, Sylva	Church	177,138	126,367		303,505		
Shoal Creek, Whittie	Church						
Sols Creek, Tuckasegee	Church						
Speedwell	Church	3,278	13,752		17,030		
Unity, Cullowhee	Church						
Webster, Webster	Church	258,572	81,162		339,734		
Wilkesdale, Sylva	Church	16,778	27		16,805		
Total:		1,867,937	413,606		2,281,543		

Financial - Missions

Tuckaseegee Association

Coop - Cooperative Program		State - State Missions		Lottie M. - Lottie Moon		TME - Total Miss. Exp. (Coop+Assoc.+State+Annie+Lott ie+Other+Non)			
Assoc. - Associational Missions		Annie A. - Annie Armstrong		Other - Other SBC Miss. Exp.		Non SBC - Non-SBC Miss. Exp.			
Name	Church/Mission	Coop.	Assoc.	State	Annie A.	Lottie M.	Other	Non SBC	TME
Big Ridge, Glenville	Church	\$	\$	\$	\$	\$	\$	\$	\$
Buff Creek, Sylva	Church	\$2,208	\$1,200	\$	\$2,435	\$4,902	\$1,866	\$500	\$13,111
Calvary, Sylva	Church	\$250	\$100	\$125	\$	\$100	\$	\$2,700	\$3,275
Cashiers, Cashiers	Church	\$10,000	\$3,000	\$500	\$7,055	\$8,613	\$7,732	\$8,820	\$45,720
Cullowhee Valley, Cullowhee	Church	\$	\$180	\$	\$200	\$100	\$	\$3,112	\$3,592
Dicks Creek, Whittier	Church	\$	\$300	\$	\$	\$	\$	\$	\$300
East Fork, Sylv	Church	\$600	\$2,400	\$1,150	\$350	\$350	\$3,250	\$4,163	\$12,263
El Centro del Senor	Church	\$1,348	\$404	\$463	\$916	\$1,279	\$	\$	\$4,410
Faith, Sylva	Church	\$3,267	\$2,188	\$3,207	\$500	\$300	\$541	\$641	\$10,644
Greens Creek, Sylva	Church	\$4,800	\$2,400	\$100	\$345	\$638	\$934	\$1,435	\$10,652
Hamburg, Glenville	Church	\$	\$	\$	\$	\$215	\$250	\$15,687	\$16,152
Hyatt's Chapel, Whittier	Church	\$600	\$600	\$	\$600	\$600	\$600	\$	\$3,000
Jarrett Memorial, Dillsboro	Church	\$300	\$300	\$	\$	\$	\$164	\$1,080	\$1,844
La Primera Iglesia Bautista Del Amor	Church	\$	\$	\$	\$	\$	\$	\$	\$
Liberty, Syl	Church	\$	\$	\$	\$	\$	\$	\$	\$
Lighthouse, Sylva	Church	\$3,376	\$701	\$11,934	\$593	\$1,350	\$	\$11,823	\$29,777
Little Savannah, Sylva	Church	\$400	\$500	\$300	\$500	\$395	\$	\$2,096	\$4,191
Locust Field, Sylva	Church	\$465	\$900	\$300	\$500	\$500	\$2,767	\$3,200	\$8,632
Long Branch Missionary, Sylva	Church	\$	\$400	\$635	\$575	\$800	\$600	\$5,544	\$8,554
Lovedale, Sylva	Church	\$9,819	\$9,006	\$6,833	\$2,000	\$2,080	\$	\$8,262	\$38,000
Moses Creek, Cullowhee	Church	\$	\$	\$	\$500	\$500	\$1,433	\$8,845	\$11,278
Mount Pleasant, Sylv	Church	\$	\$	\$	\$	\$	\$	\$	\$
New Hope, Sylva	Church	\$3,900	\$8,400	\$7,520	\$	\$600	\$	\$	\$20,420
New Savannah, Sylva	Church	\$	\$100	\$	\$	\$	\$	\$	\$100
Ochre Hill, Sylva	Church	\$6,003	\$1,200	\$1,200	\$510	\$1,476	\$	\$	\$10,389
Old Savannah, Sylva	Church	\$	\$	\$	\$	\$	\$	\$	\$
Pine Creek, Cullowhee	Church	\$	\$	\$	\$	\$	\$	\$	\$
Promise Land, Cullowhee	Church	\$	\$	\$	\$	\$	\$510	\$	\$510
Rockdale, Whittier	Church	\$2,205	\$2,100	\$	\$942	\$2,006	\$	\$625	\$7,878
Scotts Creek, Sylva	Church	\$17,704	\$1,200	\$475	\$1,753	\$1,711	\$2,409	\$1,500	\$26,752

Coop -
Cooperative Program

State -
State Missions

Lottie M. -
Lottie Moon

TME -
Total Miss. Exp.
(Coop+Assoc.+State+Annie+Lott
ie+Other+Non)

Assoc. -
Associational Missions

Annie A. -
Annie Armstrong

Other -
Other SBC Miss. Exp.

Non SBC -
Non-SBC Miss. Exp.

Name	Church/Mission	Coop.	Assoc.	State	Annie A.	Lottie M.	Other	Non SBC	TME
Shoal Creek, Whittie	Church	\$	\$	\$	\$	\$	\$	\$	\$
Sols Creek, Tuckasegee	Church	\$	\$	\$	\$	\$	\$	\$	\$
Speedwell	Church	\$	\$	\$	\$	\$	\$	\$1,211	\$1,211
Unity, Cullowhee	Church	\$	\$	\$	\$	\$	\$	\$	\$
Webster, Webster	Church	\$5,900	\$	\$	\$	\$	\$700	\$56,068	\$62,668
Wilkesdale, Sylva	Church	\$128	\$510	\$	\$113	\$325	\$255	\$	\$1,331
Total		\$73,273	\$38,089	\$34,742	\$20,387	\$28,840	\$24,011	\$137,312	\$356,654

Congregation and Member Info
Tuckaseegee Association

67

CONGREGATION	C/M	TM	RM	OA	NMT	Year Organized	Year Pastor Came	L	WA	CMS	CMO	L/U	Assoc. Mis. %	IP	R
Big Ridge, Glenville	Church	0	0			0	0						N	N	
Buff Creek, Sylva	Church	266	0	5		0	0	Open Country/Rural Area	70				N	N	White Non- Hispanic
Calvary, Sylva	Church	135	0	2		0	0	Open Country/Rural Area	22				N	N	White Non- Hispanic
Cashiers, Cashiers	Church	97	0			0	0	Town (500-2499 people)	100				N	N	White Non- Hispanic
Cullowhee Valley, Cullowhee	Church	35	0			0	0	Open Country/Rural Area	11				N	N	White Non- Hispanic
Dicks Creek, Whittier	Church	78	0			0	0		37				N	N	White Non- Hispanic
East Fork, Sylva	Church	77	0	5		0	0	Open Country/Rural Area	53				N	N	White Non- Hispanic
El Centro del Senor	Church	38	0			0	0		42				N	N	Hispanic
Faith, Sylva	Church	90	0	1		0	0	Town (500-2499 people)	34				N	N	White Non- Hispanic
Greens Creek, Sylva	Church	129	0			0	0	Open Country/Rural Area	40				N	N	White Non- Hispanic
Hamburg, Glenville	Church	225	0	2		0	0	Town (500-2499 people)	50				N	N	White Non- Hispanic
Hyatt's Chapel, Whittier	Church	75	0			0	0	Open Country/Rural Area	15				N	N	White Non- Hispanic
Jarrett Memorial, Dillsboro	Church	174	0	2		0	0	Village (up to 499 people)	35				N	N	White Non- Hispanic
La Primera Iglesia Bautista Del Amor	Church	22	0			0	0	Open Country/Rural Area	22				N	N	Hispanic
Liberty, Syl	Church	0	0			0	0						N	N	
Lighthouse, Sylva	Church	350	0	21		0	0		490				N	N	White Non- Hispanic

C/M - Church/Mission
TM - Total Membership
RM - Resident Membership

NMT - New Member Training
L - Location
WA - AM Worship Attendance

CMS - Church-Type Missions Started
CMO - Church-Type Missions Operating
L/U - Lost/Unchurched

Assoc. Mis. % - Association Mission on % Basis
IP - Intercessory Prayer
R - Racial Ethnic Group

CONGREGATION	C/M	TM	RM	OA	NMT	Year Organized	Year Pastor Came	L	WA	CMS	CMO	L/U	Assoc. Mis. %	IP	R
Little Savannah, Sylva	Church	202	0	2		0	0	Open Country/Rural Area	53				N	N	White Non- Hispanic
Locust Field, Sylva	Church	160	0	2		0	0	Open Country/Rural Area	55				N	N	White Non- Hispanic
Long Branch Missionary, Sylva	Church	168	0			0	0	Open Country/Rural Area	38				N	N	White Non- Hispanic
Lovedale, Sylva	Church	219	0	14		0	0	Town (500-2499 people)	110				N	N	White Non- Hispanic
Moses Creek, Cullowhee	Church	100	0	2		0	0	Open Country/Rural Area	38				N	N	White Non- Hispanic
Mount Pleasant, Sylv	Church	350	0			0	0	Open Country/Rural Area	40				N	N	White Non- Hispanic
New Hope, Sylva	Church	422	0	3		0	0	Open Country/Rural Area	153				N	N	White Non- Hispanic
New Savannah, Sylva	Church	36	0			0	0	Open Country/Rural Area	32				N	N	White Non- Hispanic
Ochre Hill, Sylva	Church	338	0	5		0	0	Open Country/Rural Area	100				N	N	White Non- Hispanic
Old Savannah, Sylva	Church	0	0			0	0						N	N	
Pine Creek, Cullowhee	Church	143	0	5		0	0	Open Country/Rural Area	50				N	N	White Non- Hispanic
Promise Land, Cullowhee	Church	50	0			0	0	Open Country/Rural Area	40				N	N	White Non- Hispanic
Rockdale, Whittier	Church	136	0	2		0	0	Open Country/Rural Area	50				N	N	White Non- Hispanic
Scotts Creek, Sylva	Church	456	0	25		0	0	Small City (2500- 9999 people)	120				N	N	White Non- Hispanic
Shoal Creek, Whittie	Church	0	0			0	0						N	N	
Sols Creek, Tuckasegee	Church	0	0			0	0						N	N	

C/M - Church/Mission
TM - Total Membership
RM - Resident Membership
OA - Other Additions

NMT - New Member Training
L - Location
WA - AM Worship Attendance
MM - Total Music Ministry Enrollment

CMS - Church-Type Missions Started
CMO - Church-Type Missions Operating
L/U - Lost/Unchurched

Assoc. Mis. % - Association Mission on % Basis
IP - Intercessory Prayer
R - Racial Ethnic Group

CONGREGATION	C/M	TM	RM	OA	NMT	Year Organized	Year Pastor Came	L	WA	CMS	CMO	L/U	Assoc. Mis. %	IP	R
Speedwell	Church	228	0	1		0	0	Open Country/Rural Area	35				N	N	White Non- Hispanic
Unity, Cullowhee	Church	0	0			0	0		12				N	N	White Non- Hispanic
Webster, Webster	Church	409	0	7		0	0	Town (500-2499 people)	280				N	N	White Non- Hispanic
Wilkesdale, Sylva	Church	43	0			0	0	Small City (2500- 9999 people)	15				N	N	White Non- Hispanic
Totals		5251	0	106					2,242						

C/M - Church/Mission
TM - Total Membership
RM - Resident Membership
OA - Other Additions

NMT - New Member Training
L - Location
WA - AM Worship Attendance
MM - Total Music Ministry Enrollment

CMS - Church-Type Missions Started
CMO - Church-Type Missions Operating
L/U - Lost/Unchurched

Assoc. Mis. % - Association Mission on % Basis
IP - Intercessory Prayer
R - Racial Ethnic Group

10/2011

Pastors

BUFF CREEK	Josh	Blythe	1274 Mineral Springs Dr	SYLVA	NC	28779-	586-5784
CALVARY	Avery	Brown	196 Lonely Violet Lane	SYLVA	NC	28779-	631-9683
CASHIERS	Scotty	Patrick	PO Box 336	CASHIERS	NC	28717-	743-3182
CULLOWHEE Valley	John	Hartley	11 Pauline Circle	FRANKLIN	NC	28734-	524-6596
DICKS CREEK	Cody	Rice	35 Dunroamen Rd	WHITTIER	NC	28789-	586-1629
EAST FORK	Dennis	Burrell	46 Mica Ridge	SYLVA	NC	28779-	586-9713
EL CENTRO DEL SENOR	Robert	Fernandez	PO Box 2153	SYLVA	NC	28779-	586-2630
FAITH	J.D.	Grant	PO Box 9	WEBSTER	NC	28788	
GREENS CREEK	Tom	Lavin, Jr.	PO Box 482	DILLSBORO	NC	28725-	631-3157
HYATTS CHAPEL	Dale	Roberts	2093 Old BALSAM Rd	WAYNESVILLNC	28786-	456-6875	
JARRETT MEMORIAL	Cory	Boone	5 Wild Rose Dr.	WHITTIER	NC	28789-	269-8112
La Primera Iglesia Bautis	Felix	Villarreal	376 Laurel Knob Rd.	CASHIERS	NC	28717-	743-3908
LIBERTY	Charles	Lee	PO Box 2134	SYLVA	NC	28779-	775-2832
LIGHTHOUSE	Josh	Hyde	PO Box 511	WEBSTER	NC	28788-	631-3594
LIGHTHOUSE	Shane	Roughton	PO Box 706	SYLVA	NC	28779-	586-3884
LITTLE SAVANNAH	Kent	Lowdermilk	195 Aunt Belle's Cv	WAYNESVILLNC	28786-	226-3574	
LOCUST FIELD	Jason	Buchanan	293 Capuchin Drive	SYLVA	NC	28779-	586-1471
LONG BRANCH	Mark	Tice	1111 Pigeon St.	WAYNESVILLNC	28786-	734-0282	
LOVEDALE	Mike	Farmer	729 Fisher Creek Rd	SYLVA	NC	28779-	586-6530
MOSES CREEK	Mike	Gunter	27 Pleasant Ridge	SYLVA	NC	28779-	586-2450
MT PLEASANT	David	Harris	64 Split Rail Drive	SYLVA	NC	28779-	508-4279
NEW SAVANNAH	Ray	Knowles	957 Cabe Rd.	SYLVA	NC	28779-	586-6729
OCHRE HILL	Earl	Holden	50 Canary Springs	SYLVA	NC	28779-	586-5262
OLD SAVANNAH	David	Souderes	137 Red Swanger Rd	WAYNESVILLNC	28786-	456-3174	
PROMISED LAND	Larry	Bryson	2635 Wayehutta Road	CULLOWHEENC	28723-	293-9461	
ROCKDALE	Ray	Fox	1525 Shepherd's Creek Rd	BRYSON CIT'NC	28713-	488-2876	
SCOTTS CREEK	Johnny	Lee	334 Allman Drive	FRANKLIN	NC	28734-	369-8032
SHOAL CREEK	Steve	Jamison	115 Fort Wilderness Rd	WHITTIER	NC	28789-	
SOLS CREEK	David C.	Owen	108 Palimino Rd.	TUCKASEGEINC	28783-	293-5561	
SPEEDWELL	Justin	Hunt	3055 Coopers Creek Rd	BRYSON CIT'NC	28713-	736-1155	
UNITY	Gerald	Conner	984 Orion Davis Road	WAYNESVILLNC	28786-	550-4611	
WEBSTER	Scott	Carter	2301 Old Settlement Rd	SYLVA	NC	28779-	586-6741
WILKESDALE	Terry	Jenkins	155 Round Stone Dr.	FRANKLIN	NC	28734-	369-9639

11/2011

Ordained Ministers

LIGHTHOUSE	L. F. (Bill)	Sutton	202 GREENS CREEK Rd	SYLVA	NC	28779-	586-9823
LITTLE SAVANNAH	Ray	McCall	997 Sulphur Springs Rd	WAYNESVILLNC	28786-	456-5915	
LOCUST FIELD	Bill	Greene	388 Brooks Branch Rd.	SYLVA	NC	28779-	586-9759
LOVEDALE	Wayne	Caldwell	2064 Cope Creek Rd	SYLVA	NC	28779-	586-4759
NEW HOPE	Hardin	Nicholson	251 Shelton St.	WAYNESVILLNC	28786-	454-5940	
SCOTTS CREEK	David	Lowery	97 Steeple Rd	SYLVA	NC	28779-	586-2631
UNITY	Ernest	Ammons	Casper Rd	CULLOWHEENC	28723		
UNITY	David	Hoyle	Watson Branch Rd	CULLOWHEENC	28723		
UNITY	Bobby	Watson	77 Watson Br Rd (no mailbox	CULLOWHEENC	28723	293-3170	

BUFF CREEK	Kim	Mathis	402 Fisher Creek Rd.	SYLVA	NC	28779-	586-0758
CALVARY	Kelli	Richmond	PO Box 917	SYLVA	NC	28779-	586-6235
CASHIERS	Larry	Madden	PO Box 67	CASHIERS	NC	28717-	743-2498
CULLOWHEE Valley	Shirley	Pressley	P O Box 1437	CULLOWHEENC		28723-	293-5001
EAST FORK	Carleen	Parham	1757 EAST FORK Rd	SYLVA	NC	28779-	586-5011
EL CENTRO DEL SENOR	Robert	Fernandez	PO Box 2153	SYLVA	NC	28779-	586-2630
FAITH	David	Proffitt	PO Box 126	SYLVA	NC	28779-	586-1615
GREENS CREEK	Stanley	Green	331 Valley Springs Dr	SYLVA	NC	28779-	586-5989
HAMBURG	Verner	Rice	PO Box 882	CASHIERS	NC	28717-	743-2678
JARRETT MEMORIAL	Mike	Parris	PO Box 693	SYLVA	NC	28779-	586-6065
La Primera Iglesia Bautis	Santos	Gomez	376 Laurel Knob	CASHIERS	NC	28717-	
La Primera Iglesia Bautis	Santos	Lopez	376 Laurel Knob Rd.	CASHIERS	NC	28717-	200-1115
LIBERTY	Margaret	Miller	PO Box 382	SYLVA	NC	28779-	586-2044
LIGHTHOUSE	Jimmy	Farrell	PO Box 511	Webster	NC	28788-	586-3884
LITTLE SAVANNAH	Cathy	Lowdermilk	195 Aunt Belle's Cv	WAYNESVILLNC		28786-	456-6739
LOCUST FIELD	Chuck	Norris		SYLVA	NC	28779	586-2801
LONG BRANCH	Harold	Wilkey	610 Joe Wilkey Road	SYLVA	NC	28779-	586-4962
LOVEDALE	Eddie	Potts	314 Cardinal Dr.	SYLVA	NC	28779-	586-4258
MOSES CREEK	Arthur	Stephens	95 Genesis Trail Drive	SYLVA	NC	28779-	586-6479
MT PLEASANT	Jack	Hoyle	1040 Henry Road	SYLVA	NC	28779-	586-4446
NEW HOPE	Crystal	Johnson	PO Box 245	SYLVA	NC	28779-	
NEW SAVANNAH	Mr. & Mrs.	Wilbanks	300 Garnet Rd	SYLVA	NC	28779-	586-3654
OCHRE HILL	Margaret	Blanton	5188 US 74E	SYLVA	NC	28779-	586-5296
OLD SAVANNAH	Danny	Hall	209 Hardwood Trail	SYLVA	NC	28779-	586-4672
PROMISED LAND	Stephanie	Bryson	2635 Wayehutta Road	CULLOWHEENC		28723-	293-9461
ROCKDALE	Ronda	Denton	99 Tryon Estate Rd	WHITTIER	NC	28789	631-4157
SCOTTS CREEK	Lance	Newman	97 Steeple Rd	SYLVA	NC	28779-	788-7129
SHOAL CREEK	Shirley	Sutton	PO Box 532	BRYSON CIT'NC		28713-	488-3532
SOLS CREEK	Lisa	Hoxit	PO Box 86	TUCKASEGEINC		28783-	
SPEEDWELL	Lenn	Wilkes	1358 Pressley Creek Rd	CULLOWHEENC		28723-	293-9400
WEBSTER	Amanda	Stewart	PO Box 34	WEBSTER	NC	28788-	586-4459

11/2011

Youth Directors

EAST FORK	Sherry	Cabe	127 Woodrow Deitz Rd	SYLVA	NC	28779-	631-1959
EL CENTRO DEL SENO	Jose	Moctezuma	6 Huckleberry Cove	SYLVA	NC	28779-	508-6582
FAITH	Mitch	Hyde	118 Winnipeg Lane	SYLVA	NC	28779-	586-3713
JARRETT MEMORIAL	Beth	Boone	5 Wild Rose Dr.	WHITTIER	NC	28789-	269-8109
LIGHTHOUSE	Shane	Roughton	PO Box 706	SYLVA	NC	28779-	586-3884
LOCUST FIELD	Teresa	Cabe	405 Cabe Rd	SYLVA	NC	28779	586-8112
LOCUST FIELD	Rita	Norris		SYLVA	NC	28779	586-2801
MOSES CREEK	Jason	Watson	35 Scenic Drive	SYLVA	NC	28779-	586-0830
MT PLEASANT	Jason	Cagle	6245 Skyland Drive	SYLVA	NC	28779-	
NEW HOPE	Greg	Stewart	78 Flying Squirrel Ridge	WHITTIER	NC	28789-	316-7576
NEW SAVANNAH	Ruth	Knowles	957 Cabe Rd.	SYLVA	NC	28779-	586-6729
OLD SAVANNAH	Dustin	Buchanan	PO Box 730	DILLSBORO	NC	28725-	586-0075
OLD SAVANNAH	Wendy	Buchanan	PO Box 730	DILLSBORO	NC	28725-	631-1371
PINE CREEK	Dean	Watson	PO Box 2723	CASHIERS	NC	28717-	743-6239
PROMISED LAND	Kathy	Kelley	441 East Rodgers Rd	CULLOWHEENC		28723	293-7492
PROMISED LAND	Randy	Messer	PO Box 632	WEBSTER	NC	28788-	293-5156
ROCKDALE	M/M Chris	Mathis	28 Bandit Branch	WHITTIER	NC	28789	
SPEEDWELL	Jennifer	Hunt	3055 Coopers Creek Rd	BRYSON CIT'NC		28713-	736-1155
WEBSTER	Lee	Wideman	PO Box 34	WEBSTER	NC	28788-	5-914-2863

11/2011

Children's Director

CALVARY	Cathey	Ashe	726 CALVARY Church Rd	SYLVA	NC	28779-	586-4202
FAITH	Pat	Proffitt	PO Box 283	WEBSTER	NC	28788-	586-5812
LIGHTHOUSE	Belinda	Bryson	571 Perley Hyatt Rd.	SYLVA	NC	28779-	226-6453
LOCUST FIELD	Teresa	Cabe	405 Cabe Rd	SYLVA	NC	28779	586-8112
LONG BRANCH	April	Buchanan	47 Dills Branch Rd	SYLVA	NC	28779-	631-1282
MOSES CREEK	Mrs. Kelli	Watson	35 Scenic Drive	SYLVA	NC	28779-	631-1844
NEW HOPE	Misty	Fisher	617 Evans Rd	SYLVA	NC	28779-	586-0545
OCHRE HILL	Cindy	Henson	151 Posey Blanton Rd	SYLVA	NC	28779-	631-5099
OLD SAVANNAH	Tina	Revis	10 Pin Oak Rd	WHITTIER	NC	28789-	586-7189
PROMISED LAND	Ashley	Queen	61 Mountain River Dr.	SYLVA	NC	28779-	293-3704
SCOTTS CREEK	Laura	Buchanan	137 Miracle Mountain Rd	SYLVA	NC	28779-	586-2971
SHOAL CREEK	Ella	Wright	383 Paul Cooper Rd	WHITTIER	NC	28789-	
SOLS CREEK	Lori	Broom	PO Box 86	TUCKASEGEINC		28783-	
SOLS CREEK	Angie	Winchester	PO Box 86	TUCKASEGEINC		28783-	
SPEEDWELL	Janette	Fox	376 Silver Fox Dr	CULLOWHEENC		28723-	293-5488
WEBSTER	Tamme	Youmans	PO Box 34	WEBSTER	NC	28788-	586-4459

11/2011

Preschool Directors

EL CENTRO DEL SENOM	Mauricio	Rosas	51 Tigerlily Court #10	CULLOWHEENC		28723	506-0264
FAITH	Suzanne	Hyde	118 Winnipeg Lane	SYLVA	NC	28779-	586-3713
JARRETT MEMORIAL	Cory	Boone	5 Wild Rose Dr.	WHITTIER	NC	28789-	269-8112
LONG BRANCH	Amber	Fox	296 Venice LN	SYLVA	NC	28779-	631-0681
MOSES CREEK	Mrs. Kelli	Watson	35 Scenic Drive	SYLVA	NC	28779-	631-1844
NEW HOPE	Tara	Dillard	245 High Country Drive	SYLVA	NC	28779-	
NEW SAVANNAH	Emily	Bryson	136 Lacy Fern Ridge	SYLVA	NC	28779-	586-6729
NEW SAVANNAH	Sandra	Sims	419 Gay Road	SYLVA	NC	28779-	
OCHRE HILL	Susan	Norman	109 Welcome Ridge	SYLVA	NC	28779	586-3865
OLD SAVANNAH	Sharon	Conlin	307 Buchanan Loop	SYLVA	NC	28779-	586-9234
PROMISED LAND	Stephanie	Bryson	2635 Wayehutta Road	CULLOWHEENC		28723-	293-9461
SCOTTS CREEK	Laura	Buchanan	137 Miracle Mountain Rd	SYLVA	NC	28779-	586-2971

BUFF CREEK	Kenny	Shuler	80 Maple Springs Rd	SYLVA	NC	28779-	586-8251
CALVARY	Ruby	Allison	724 CALVARY Church Rd	SYLVA	NC	28779-	586-6256
CASHIERS	Lee	Hunter	PO Box 572	CASHIERS	NC	28717-	
CULLOWHEE Valley	Elaine	Haskett	1382 Pressley Creek Rd	CULLOWHEENC		28723-	293-9436
DICKS CREEK	Kathy	Stiles	62 Wild Rose Drive	WHITTIER	NC	28789-	586-4823
EAST FORK	Barbara	Cabe	19 Woodrow Deitz Rd	SYLVA	NC	28779-	586-6728
EL CENTRO DEL SENO	Amanda	Rosas	PO Box 2305	CULLOWHEENC		28723-	506-6374
FAITH	Phyllis	Bolick	53 Yuletide Lane	SYLVA	NC	28779-	586-6549
GREENS CREEK	Joyce	Green	2258 GREENS CREEK Rd	SYLVA	NC	28779-	586-4695
HAMBURG	Tamara	Villarreal					
HYATTS CHAPEL	Ann	Ball	13 Teigue Cove Rd	WHITTIER	NC	28789-	497-2603
JARRETT MEMORIAL	Joan	Shepherd	1663 East Cope Creek Rd	SYLVA	NC	28779-	586-4784
La Primera Iglesia Bautista	Patricia	Villarreal	376 Laurel Knob Rd.	CASHIERS	NC	28717-	743-3908
LIBERTY	Barbara	Austin	PO Box 2134	SYLVA	NC	28779-	586-8835
LIGHTHOUSE	Helen	Millsaps	468 Tahlfield Rd	SYLVA	NC	28779-	631-3741
LITTLE SAVANNAH	Stephanie	Grisson	553 Tahlfield Rd	SYLVA	NC	28779-	586-1324
LOCUST FIELD	Rita	Norris		SYLVA	NC	28779	586-2801
LONG BRANCH	David	Dalton	PO Box 162	DILLSBORO	NC	28725-	586-6638
LOVEDALE	Nancy	Sherrill	1057 Ashe Loop Rd	SYLVA	NC	28779-	586-2300
MOSES CREEK	Arthur	Stephens	95 Genesis Trail Drive	SYLVA	NC	28779-	586-6479
MT PLEASANT	Joyce	Davis	PO Box 1862	SYLVA	NC	28779-	586-3598
NEW HOPE	Judy	Shuler	PO Box 245	SYLVA	NC	28779-	586-0439
NEW SAVANNAH	Kitty	Knowles	136 Lacy Fern Ridge	SYLVA	NC	28779-	586-6729
OCHRE HILL	Nancy	Nichols	8 Stone Wall Rd	WHITTIER	NC	28789-	586-4581
OLD SAVANNAH	Angie	White	375 Nighthawk Dr	SYLVA	NC	28779-	586-2612
PINE CREEK	Barbara	Henderson	4484 PINE CREEK Rd	CULLOWHEENC		28723-	743-2345
PROMISED LAND	Wanda	Messer	PO Box 632	WEBSTER	NC	28788-	293-5156
ROCKDALE	Jennie	Miller	35 Tanglewood Dr	WHITTIER	NC	28789-	586-6392
SCOTTS CREEK	Dianne	Cochran	PO Box 359	DILLSBORO	NC	28725-	586-0777
SHOAL CREEK	Helen	Rickman	PO Box 552	SYLVA	NC	28779-	497-2335
SOLS CREEK	Stephanie	Wilson	330 SOLS CREEK Church Rd	TUCKASEGENE	NC	28783-	
SPEEDWELL	Christine	Fisher	2594 Pressley Creek Road	CULLOWHEENC		28723-	293-3278
UNITY	Marian	Aldridge	229 Triple Fork Rd	CULLOWHEENC		28723-	293-5963
WEBSTER	Tracy	Brandt	PO Box 207	Webster	NC	28788	631-4121
WEBSTER	Tracy	Brandt	PO Box 207	WEBSTER	NC	28788-	631-4121
WILKESDALE	Wanda	Henson	PO Box 1816	SYLVA	NC	28779-	586-6069

Deacon Chairmen

CALVARY	Bill	Buchanan	77 Buck Hill Road	SYLVA	NC	28779-	586-4632
CASHIERS	Carlton	Fowler	1081 Breedlove Rd	GLENVILLE	NC	28736-	743-5017
DICKS CREEK	Willis	Brown	1280 DICKS CREEK Rd.	WHITTIER	NC	28789-	586-6131
EAST FORK	Carlin	Cabe	2224 EAST FORK Rd	SYLVA	NC	28779-	586-4621
EL CENTRO DEL SENO	Pedro	Lopez	PO Box 530	CULLOWHEENC		28723-	508-3372
FAITH	Dennis	Proffitt	PO Box 283	WEBSTER	NC	28788-	586-5812
GREENS CREEK	Stanley	Green	331 Valley Springs Dr	SYLVA	NC	28779-	586-5989
HAMBURG	Verner	Rice	PO Box 882	CASHIERS	NC	28717-	743-2678
HYATTS CHAPEL	Kent	Moore	201 Martin Rd.	WHITTIER	NC	28789-	497-2619
JARRETT MEMORIAL	Perry	Sutton	PO Box 69	DILLSBORO	NC	28725-	586-2635
La Primera Iglesia Bautis	Santos	Lopez	376 Laurel Knob Rd.	CASHIERS	NC	28717-	200-1115
LIBERTY	Keldon Eug	Austin	PO Box 2134	SYLVA	NC	28779-	586-8835
LIGHTHOUSE	Bill	Fox	571 Perley Hyatt Rd	SYLVA	NC	28779-	506-7128
LITTLE SAVANNAH	Kenny	Frizzell	2978 Little Savannah Rd	SYLVA	NC	28779-	586-3492
LOCUST FIELD	Roy	Young	PO Box 1972	SYLVA	NC	28779-	586-8176
LONG BRANCH	Roy	Dalton	374 South Piney Mtn Rd.	WHITTIER	NC	28789-	586-6638
LOVEDALE	Albert	Regan	295 Hidden Springs Rd	WHITTIER	NC	28789-	497-4010
MOSES CREEK	Max	Cook	29 South Woods Drive	SYLVA	NC	28779-	586-2086
MT PLEASANT	James	Conner	93 Blue Oval Rd	SYLVA	NC	28779-	506-7534
NEW HOPE	Donal	Shuler	32 Old Field Cemetery Rd	SYLVA	NC	28779-	586-2653
NEW SAVANNAH	Mr. & Mrs.	Wilbanks	300 Garnet Rd	SYLVA	NC	28779-	586-3654
OCHRE HILL	Mike	Parks	117 Posey Blanton Rd	SYLVA	NC	28779-	586-4185
OLD SAVANNAH	Ronnie	Buchanan	PO Box 59	DILLSBORO	NC	28725-	586-4666
OLD SAVANNAH	Danny	Hall	209 Hardwood Trail	SYLVA	NC	28779-	586-4672
PINE CREEK	Leland	Cooper	3606 Yellow Mtn Rd	CULLOWHEENC		28723-	743-2597
PROMISED LAND	Andy	Nicholson	350 Indian Mound Rd	CULLOWHEENC		28723-	293-5073
ROCKDALE	Kenneth	Miller	35 Tanglewood Dr	WHITTIER	NC	28789-	586-6392
SCOTTS CREEK	Mark	Jones					
SHOAL CREEK	Glenn	Ladd					
SPEEDWELL	Lenn	Wilkes	1358 Pressley Creek Rd	CULLOWHEENC		28723-	293-9400
UNITY	Bill	Dills	413 Watson Branch	CULLOWHEENC		28723-	293-5593
WEBSTER	James	Davis	PO Box 34	WEBSTER	NC	28788-	586-4459
WEBSTER	David	Youmans	55 LITTLE SAVANNAH Rd	SYLVA	NC	28779-	586-8353
WILKESDALE	Alvin	Henson	PO Box 1816	SYLVA	NC	28779-	586-6069

11/2011 Representatives to the Associational Executive Board

CALVARY	Chris	Bowers	159 Gardenview Dr	SYLVA	NC	28779-	631-3131
CASHIERS	Benny	Rice	275 Bull Pen Rd	CASHIERS	NC	28717-	743-2489
EAST FORK	Dusty	DeStefano	1849 EAST FORK Road	SYLVA	NC	28779-	586-3631
FAITH	Randy	Crawford	579 BUFF CREEK Rd.	SYLVA	NC	28779-	586-4526
GREENS CREEK	Bud	Henderson	182 Sugar Fork Rd	SYLVA	NC	28779-	586-6826
HYATTS CHAPEL	Kent	Moore	201 Martin Rd.	WHITTIER	NC	28789-	497-2619
JARRETT MEMORIAL	Ray	Buchanan	PO Box 215	DILLSBORO	NC	28725-	586-5492
LOCUST FIELD	Sharon	Payne	PO Box 2	DILLSBORO	NC	28725-	586-3378
LONG BRANCH	Roy	Dalton	374 South Piney Mtn Rd.	WHITTIER	NC	28789-	586-6638
MOSES CREEK	Arthur	Stephens	95 Genesis Trail Drive	SYLVA	NC	28779-	586-6479
MT PLEASANT	James	Conner	93 Blue Oval Rd	SYLVA	NC	28779-	506-7534
NEW HOPE	Donal	Shuler	32 Old Field Cemetery Rd	SYLVA	NC	28779-	586-2653
ROCKDALE	Douglas	Denny	764 Thomas Valley Rd	WHITTIER	NC	28789-	586-5815
ROCKDALE	Kenneth	Miller	35 Tanglewood Dr	WHITTIER	NC	28789-	586-6392
SPEEDWELL	Michael	Coggins	5280 CULLOWHEE Mtn Rd	CULLOWHEENC		28723-	293-9557
UNITY	Fayne	Aldridge	229 Triple Fork Rd	CULLOWHEENC		28723-	293-5963
WILKESDALE	Alvin	Henson	PO Box 1816	SYLVA	NC	28779-	586-6069

11/2011

Sunday School Directors

BUFF CREEK	Tim	Mathis	400 Fisher Creek Rd	SYLVA	NC 28779-	586-6798
CALVARY	Chris	Bowers	159 Gardenvue Dr	SYLVA	NC 28779-	631-3131
CASHIERS	Larry	Madden	PO Box 67	CASHIERS	NC 28717-	743-2498
DICKS CREEK	Nathan	Conner	25 Wild Rose Dr.	WHITTIER	NC 28789	586-2206
EAST FORK	Jeremy	Jones	47 Wildhorse Rd	SYLVA	NC 28779-	399-9519
EL CENTRO DEL SENOR	Robert	Fernandez	PO Box 2153	SYLVA	NC 28779-	586-2630
FAITH	David	Proffitt	PO Box 126	SYLVA	NC 28779-	586-1615
GREENS CREEK	Allen	Garner	310 Sugar Fork Road	SYLVA	NC 28779-	586-4698
HAMBURG	Fabian	Villarreal				
HYATTS CHAPEL	Cance	Carnes	PO Box 85	DILLSBORO	NC 28725-	586-4865
JARRETT MEMORIAL	Chris	Mathis				
JARRETT MEMORIAL	Perry	Sutton	PO Box 69	DILLSBORO	NC 28725-	586-2635
LIBERTY	Minnie	Casey	PO Box 823	SYLVA	NC 28779-	586-5210
LIGHTHOUSE	Shane	Roughton	PO Box 706	SYLVA	NC 28779-	586-3884
LIGHTHOUSE	L. F. (Bill)	Sutton	202 GREENS CREEK Rd	SYLVA	NC 28779-	586-9823
LITTLE SAVANNAH	Mike	Taylor	123 One Horse Farm Rd	SYLVA	NC 28779-	586-2727
LOCUST FIELD	Donald	Dockins	East Cope Creek Rd	SYLVA	NC 28779	
LONG BRANCH	Roy	Dalton	374 South Piney Mtn Rd.	WHITTIER	NC 28789-	586-6638
LOVEDALE	Hugh	Davis	976 Brooks Branch Rd	SYLVA	NC 28779-	586-1553
MOSES CREEK	Jason	Watson	35 Scenic Drive	SYLVA	NC 28779-	586-0830
MT PLEASANT	Noel	Cagle	219 Ashley Cagle Rd	SYLVA	NC 28779-	586-8550
NEW HOPE	Arnold	Brooks	P O Box 836	SYLVA	NC 28779-	586-8386
NEW SAVANNAH	William	Howze	41 Lacy Fern Ridge	SYLVA	NC 28779-	631-3296
OCHRE HILL	Kenneth	Burrell	8 Allison Cove Rd	SYLVA	NC 28779-	586-3699
OLD SAVANNAH	Greg	White	375 Nighthawk Dr	SYLVA	NC 28779-	586-2612
PINE CREEK	Leland	Cooper	3606 Yellow Mtn Rd	CULLOWHEENC	28723-	743-2597
ROCKDALE	Kenneth	Miller	35 Tanglewood Dr	WHITTIER	NC 28789-	586-6392
SCOTTS CREEK	Tim	Hawkins	135 White Birch Dr	SYLVA	NC 28779-	586-1616
SHOAL CREEK	Jim	Rickman	PO Box 552	SYLVA	NC 28779-	497-2335
SPEEDWELL	Dennis	Coggins	5280 CULLOWHEE Mtn Rd	CULLOWHEENC	28723-	293-9557
SPEEDWELL	Michael	Coggins	5280 CULLOWHEE Mtn Rd	CULLOWHEENC	28723-	293-9557
WILKESDALE	Alvin	Henson	PO Box 1816	SYLVA	NC 28779-	586-6069

11/2011

Discipleship Directors

CASHIERS	Scotty	Patrick	PO Box 336	CASHIERS	NC 28717-	743-3182
GREENS CREEK	JoAnn	Garner	310 Sugar Fork Rd	SYLVA	NC 28779-	586-4698
HAMBURG	Melvin	Jennings				
JARRETT MEMORIAL	Ray	Buchanan	PO Box 215	DILLSBORO	NC 28725-	586-5492

Treasurers

Big Ridge	Mary	Davis	2060 Big Ridge Rd	GLENVILLE	NC	28736	743-2236
BUFF CREEK	Connie	Flesch	296 Maple Springs Rd.	SYLVA	NC	28779-	631-3985
CALVARY	Teresa	Starrs	17 Caring Drive	SYLVA	NC	28779-	586-8180
CASHIERS	Cindy	Fowler	1081 Breedlove Rd.	GLENVILLE	NC	28736-	743-5017
CULLOWHEE Valley	Andree	Robinson	104 Greenlawn Ct.	WHITTIER	NC	28789-	497-0353
DICKS CREEK	Kathy	Stiles	62 Wild Rose Drive	WHITTIER	NC	28789-	586-4823
EAST FORK	Bill	Carpenter	PO Box 422	SYLVA	NC	28779-	586-6187
EL CENTRO DEL SENO	Amanda	Rosas	PO Box 2305	CULLOWHEE	NC	28723-	506-6374
FAITH	Cindy	Rigdon	PO Box 242	WEBSTER	NC	28788-	586-6040
GREENS CREEK	JoAnn	Garner	310 Sugar Fork Rd	SYLVA	NC	28779-	586-4698
HAMBURG	Martha	Jennings	PO Box 31	GLENVILLE	NC	28736-	743-2366
HYATTS CHAPEL	Ann	Ball	13 Teigue Cove Rd	WHITTIER	NC	28789-	497-2603
JARRETT MEMORIAL	Ray	Buchanan	PO Box 215	DILLSBORO	NC	28725-	586-5492
LIBERTY	Minnie	Casey	PO Box 823	SYLVA	NC	28779-	586-5210
LIGHTHOUSE	Cheryl	Woodham	PO Box 908	DILLSBORO	NC	28725	399-0225
LITTLE SAVANNAH	Carolyn	Lewis	66 One Horse Farm Rd	SYLVA	NC	28779-	586-5261
LOCUST FIELD	Virginia	Pangle	PO Box 99	DILLSBORO	NC	28725-	586-4896
LONG BRANCH	David	Dalton	PO Box 162	DILLSBORO	NC	28725-	586-6638
LOVEDALE	Carroll	Hall	113 Mercury Drive	SYLVA	NC	28779-	586-5690
MOSES CREEK	Carolyn	Cook	29 South Woods Drive	SYLVA	NC	28779-	586-2086
MT PLEASANT	Carol	Cagle	219 Ashley Cagle Rd	SYLVA	NC	28779-	508-1761
NEW HOPE	Audrey	Dean	Dillardtown Rd	SYLVA	NC	28779	
NEW HOPE	Vangie	Jones	PO Box 245	SYLVA	NC	28779-	293-9448
NEW SAVANNAH	Courtney	Aldridge	36 Blaze Drive	SYLVA	NC	28779-	
NEW SAVANNAH	Mr. & Mrs.	Wilbanks	300 Garnet Rd	SYLVA	NC	28779-	586-3654
OLD SAVANNAH	Marsha	Bates	PO Box 803	DILLSBORO	NC	28725-	631-4849
PINE CREEK	Barbara	Henderson	4484 PINE CREEK Rd	CULLOWHEE	NC	28723-	743-2345
PROMISED LAND	Cindy	Franks	9 Trumpet Dr	CULLOWHEE	NC	28723-	293-5518
ROCKDALE	Gail	Allen	1200 Barkers Creek Rd	WHITTIER	NC	28789-	586-6883
SCOTTS CREEK	Tina	Jones	97 Steeple Rd	SYLVA	NC	28779-	586-2631
SHOAL CREEK	Shirley	Sutton	PO Box 532	BRYSON CITY	NC	28713-	488-3532
SOLS CREEK	Jimmy	Luker	PO Box 86	TUCKASEGE	NC	28783-	
SPEEDWELL	Lora	Fox	406 Silver Fox Drive	CULLOWHEE	NC	28723-	293-5825
UNITY	Marian	Aldridge	229 Triple Fork Rd	CULLOWHEE	NC	28723-	293-5963
WEBSTER	Susan	Philips	PO Box 34	WEBSTER	NC	28788-	586-4459
WILKESDALE	Linda	Proctor	PO Box 1814	SYLVA	NC	28779-	586-5868

Secretary

BUFF CREEK	Virginia	Mull	783 Skyland Dr	SYLVA	NC	28779-	586-8482
CALVARY	Amanda	Bowers	159 Gardenview Dr	SYLVA	NC	28779-	631-3131
CALVARY	Cindy	Shuler	163 Airedale Dr	SYLVA	NC	28779-	631-3131
CASHIERS	Cindy	Fowler	1081 Breedlove Rd.	GLENVILLE	NC	28736-	743-5017
CULLOWHEE Valley	Andree	Robinson	104 Greenlawn Ct.	WHITTIER	NC	28789-	497-0353
DICKS CREEK	Kathy	Stiles	62 Wild Rose Drive	WHITTIER	NC	28789-	586-4823
DICKS CREEK	Irene	Wilkey	PO Box 256	DILLSBORO	NC	28725-	586-5119
EAST FORK	Gladys	Melton	127 Christmas Tree Lane	SYLVA	NC	28779-	586-0532
EL CENTRO DEL SENO	Amanda	Rosas	PO Box 2305	CULLOWHEENC	28723-		506-6374
FAITH	Christy	Proffitt	PO Box 126	SYLVA	NC	28779-	586-1615
FAITH	Annette	Sutton	623 Black Rock Ranch Rd	SYLVA	NC	28779-	507-0211
GREENS CREEK	JoAnn	Garner	310 Sugar Fork Rd	SYLVA	NC	28779-	586-4698
HAMBURG	Alice	Monteith					
HYATTS CHAPEL	Lisa	Moore	201 Martin Rd.	WHITTIER	NC	28789-	497-2619
JARRETT MEMORIAL	Betty	Parris	PO Box 4	DILLSBORO	NC	28725-	586-4627
La Primera Iglesia Bautis	Patricia	Villarreal	376 Laurel Knob Rd.	CASHIERS	NC	28717-	743-3908
LITTLE SAVANNAH	Carolyn	Lewis	66 One Horse Farm Rd	SYLVA	NC	28779-	586-5261
LOCUST FIELD	Tonya	Harris	54 Hardwood Trail	SYLVA	NC		
LOCUST FIELD	Edna	Sams	35 Whispering Pines Dr	WHITTIER	NC	28789-	
LONG BRANCH	Bobbie	Brooks	577 Joe Wilkey Rd	SYLVA	NC	28779-	586-6293
LONG BRANCH	David	Dalton	PO Box 162	DILLSBORO	NC	28725-	586-6638
LOVEDALE	Mildred	Haskett	79 Cardinal Dr	SYLVA	NC	28779-	586-5211
LOVEDALE	Sara	Parker	P O Box 15	SYLVA	NC	28779-	586-4445
LOVEDALE	Jean	Ward	PO Box 2724	CULLOWHEENC	28723-		586-6117
NEW HOPE	Audrey	Dean	Dillardtown Rd	SYLVA	NC	28779	
NEW HOPE	Judy	Shuler	PO Box 245	SYLVA	NC	28779-	586-0439
NEW SAVANNAH	Ruth	Knowles	957 Cabe Rd.	SYLVA	NC	28779-	586-6729
OCHRE HILL	Nancy	Nichols	8 Stone Wall Rd	WHITTIER	NC	28789-	586-4581
OLD SAVANNAH	Angie	White	375 Nighthawk Dr	SYLVA	NC	28779-	586-2612
ROCKDALE	Annette	Hawkins	431 Whittier Heights Rd	WHITTIER	NC	28789-	
SCOTTS CREEK	Frankie	Harris	97 Steeple Rd	SYLVA	NC	28779-	586-6713
SPEEDWELL	Lora	Fox	406 Silver Fox Drive	CULLOWHEENC	28723-		293-5825
UNITY	Marian	Aldridge	229 Triple Fork Rd	CULLOWHEENC	28723-		293-5963
WEBSTER	Gaye	Buchanan	PO Box 34	WEBSTER	NC	28788-	586-4459
WEBSTER	Ellen	Wilson	PO Box 34	WEBSTER	NC	28788-	586-4459
WILKESDALE	Evelyn	Barnes	53 Henson Street	SYLVA	NC	28779-	586-4489
WILKESDALE	Debbie	Queen	358 Sunrise Park	SYLVA	NC	28779-	586-4712

11/2011

Women's Missionary Union Directors

BUFF CREEK	Linda	O'Neill	92 Truck Wheel Holler	SYLVA	NC	28779-	586-9393
CASHIERS	Donnie	Madden	PO Box 3329	CASHIERS	NC	28717-	743-2498
GREENS CREEK	Joyce	Green	2258 GREENS CREEK Rd	SYLVA	NC	28779-	586-4695
HAMBURG	Mary	Allen	4673 N HWY 107	GLENVILLE	NC	28736-	
JARRETT MEMORIAL	Joan	Shepherd	1663 East Cope Creek Rd	SYLVA	NC	28779-	586-4784
LIBERTY	Christina	Gibson	1345 Dutchcove Rd	CANTON	NC	28716-	648-1233
LOCUST FIELD	Virginia	Pangle	PO Box 99	DILLSBORO	NC	28725-	586-4896
LOVEDALE	Cathy	Farmer	729 Fisher Creek Rd	SYLVA	NC	28779-	586-6530
LOVEDALE	Flora	Haskett	154 Haskett Rd	SYLVA	NC	28779-	
LOVEDALE	Linda	Stiles	31 Mercury Dr	SYLVA	NC	28779-	586-0008
NEW HOPE	Audrey	Dean	Dillardtown Rd	SYLVA	NC	28779	
NEW HOPE	Pam	Morgan					
OLD SAVANNAH	Marsha	Bates	PO Box 803	DILLSBORO	NC	28725-	631-4849
OLD SAVANNAH	Sarah	Souderes	37 Saunook Rd.	WAYNESVILLE	NC	28786-	456-3174
SCOTTS CREEK	Frankie	Harris	97 Steeple Rd	SYLVA	NC	28779-	586-6713
SHOAL CREEK	Carla	Ballew	395 Henry Bird Rd	WHITTIER	NC	28789-	497-7958
WILKESDALE	Evelyn	Barnes	53 Henson Street	SYLVA	NC	28779-	586-4489

11/2011

Brotherhood Directors

CASHIERS	Scotty	Patrick	PO Box 336	CASHIERS	NC	28717-	743-3182
LIBERTY	Charles	Lee	PO Box 2134	SYLVA	NC	28779-	775-2832
SCOTTS CREEK	Keith	Monteith	97 Steeple Rd	SYLVA	NC	28779-	586-2631
WEBSTER	Harry	Allman	PO Box 34	WEBSTER	NC	28788-	586-4459

11/2011

Pianists

BUFF CREEK	Derek	Mathis	400 Fisher Creek Rd	SYLVA	NC	28779-	586-6798
BUFF CREEK	Heather	Mathis	400 Fisher Creek Rd	SYLVA	NC	28779-	586-6798
CALVARY	Susanne	Allison	511 Cagle Br. Rd.	SYLVA	NC	28779-	586-6829
CASHIERS	Marlene	Fowler	PO Box 22	CASHIERS	NC	28717-	743-2350
CULLOWHEE Valley	Elaine	Haskett	1382 Pressley Creek Rd	CULLOWHEENC		28723-	293-9436
DICKS CREEK	Irene	Wilkey	PO Box 256	DILLSBORO	NC	28725-	586-5119
EAST FORK	Carleen	Parham	1757 EAST FORK Rd	SYLVA	NC	28779-	586-5011
EL CENTRO DEL SENOWanda		Fernandez	PO Box 2153	SYLVA	NC	28779-	586-2630
GREENS CREEK	Belinda	Allison	PO Box 249	DILLSBORO	NC	28725-	586-8615
GREENS CREEK	Joyce	Green	2258 GREENS CREEK Rd	SYLVA	NC	28779-	586-4695
HAMBURG	Kaye	Jennings	PO Box 226	GLENVILLE	NC	28736-	743-3041
HYATTS CHAPEL	Opal	Ward	Hwy 441	WHITTIER	NC	28789	
JARRETT MEMORIAL	Gail	Clawson	27 Wild Rose Drive	WHITTIER	NC	28789-	586-8464
La Primera Iglesia BautisSantos		Lopez	376 Laurel Knob Rd.	CASHIERS	NC	28717-	200-1115
LIGHTHOUSE	Kay	Collins	PO Box 454	WEBSTER	NC	28788-	586-9606
LITTLE SAVANNAH	Bob and Sa	Burns	49 River Bend Rd	SYLVA	NC	28779-	586-1701
LOCUST FIELD	Rita	Norris		SYLVA	NC	28779	586-2801
LONG BRANCH	Betty	Bingham	PO Box 293	DILLSBORO	NC	28725-	586-9222
LOVEDALE	Elaine	Melton	63 Pecan Drive	SYLVA	NC	28779-	586-9683
MOSES CREEK	Charles	Stephens	741 Posey Blanton Rd	SYLVA	NC	28779-	586-6813
MT PLEASANT	Nancy	Conner	93 Blue Oval Rd	SYLVA	NC	28779-	506-7338
NEW HOPE	Sue	Norman	1986 Brasstown Rd	CULLOWHEENC		28723-	293-7412
NEW SAVANNAH	Glenda	Nations	96 Glory Land Way	WHITTIER	NC	28789-	586-8628
OCHRE HILL	Jean	McMahan	493 Racking Cove	SYLVA	NC	28779-	586-8829
OLD SAVANNAH	Martha	Patterson	769 Rufus Robinson Rd	SYLVA	NC	28779-	586-2456
PINE CREEK	Linda	Moss	380 Taylor Creek Rd	CULLOWHEENC		28723-	743-2570
ROCKDALE	Alice	Gibson	405 Joe Branch Rd	WHITTIER	NC	28789-	586-3478
SCOTTS CREEK	Marilyn	Royals	97 Steeple Rd	SYLVA	NC	28779-	586-2631
SHOAL CREEK	Bobbie	Henderson	80 Boxwood Drive	WHITTIER	NC	28789	497-9887
SOLS CREEK	Linda	Luker	PO Box 86	TUCKASEGEINC		28783-	
SPEEDWELL	Kelly	Bowers	55 Puffy Lane	SYLVA	NC	28779-	586-9104
SPEEDWELL	Dana	Wilkes	1358 Pressley Creek Rd	CULLOWHEENC		28723-	293-9400
UNITY	Marian	Aldridge	229 Triple Fork Rd	CULLOWHEENC		28723-	293-5963
WEBSTER	Elaine	Brown	PO Box 34	WEBSTER	NC	28788-	586-4459
WEBSTER	Jana	Shugat	PO Box 34	WEBSTER	NC	28788-	586-4459
WILKESDALE	Elizabeth	Jenkins	155 Round Stone Dr.	FRANKLIN	NC	28734-	369-9639

11/2011

Organists

CALVARY	Clara	Sumners	189 Carolina Sunset View	SYLVA	NC	28779-	586-2090
GREENS CREEK	Joyce	Green	2258 GREENS CREEK Rd	SYLVA	NC	28779-	586-4695
LOVEDALE	Shelia	Frizzell	760 Ashe Loop Rd	SYLVA	NC	28779-	586-9317
NEW HOPE	Aletta	Buchanan	PO Box 35	DILLSBORO	NC	28725-	586-6427
NEW SAVANNAH	Larry	Mashburn	708 Brendle Rd	FRANKLIN	NC	28734-	524-6766
OCHRE HILL	Jessie	Jones	187 Allman Rd	SYLVA	NC	28779-	586-2957
OLD SAVANNAH	Irene	Brooks	1608 Barkers Creek Rd	WHITTIER	NC	28789-	497-7333
ROCKDALE	Kim	Saunooke	PO Box 1551	CHEROKEE	NC	28719-	586-3249
SCOTTS CREEK	Ellen	Rogers	PO Box 349	WHITTIER	NC	28789-	497-6792
SHOAL CREEK	Bobbie	Henderson	80 Boxwood Drive	WHITTIER	NC	28789	497-9887

11/2011

Guitarists

LOVEDALE	Jerry	Melton	63 Pecan Drive	SYLVA	NC	28779-	586-9683
PROMISED LAND	Marvin	Bumgarner	Wayehutta Rd	CULLOWHEENC		28723	
PROMISED LAND	Jerry	Horne	64 Hill N Dale Dr	CLYDE	NC	28721-	593-8360
PROMISED LAND	Gary	Kelley	441 East Rodgers Rd	CULLOWHEENC		28723	293-7492
PROMISED LAND	Dustin	Nicholson	974 Grays Ridge Rd	TUCKASEGEINC		28783-	293-9262

11/2011

Banjo Player

LOVEDALE	Hugh	Davis	976 Brooks Branch Rd	SYLVA	NC	28779-	586-1553
----------	------	-------	----------------------	-------	----	--------	----------



