

MINUTES
OF THE
Sixty-fifth Annual Session
OF THE
Beulah
Baptist Association,

HELD WITH

Yanceyville Baptist Church,

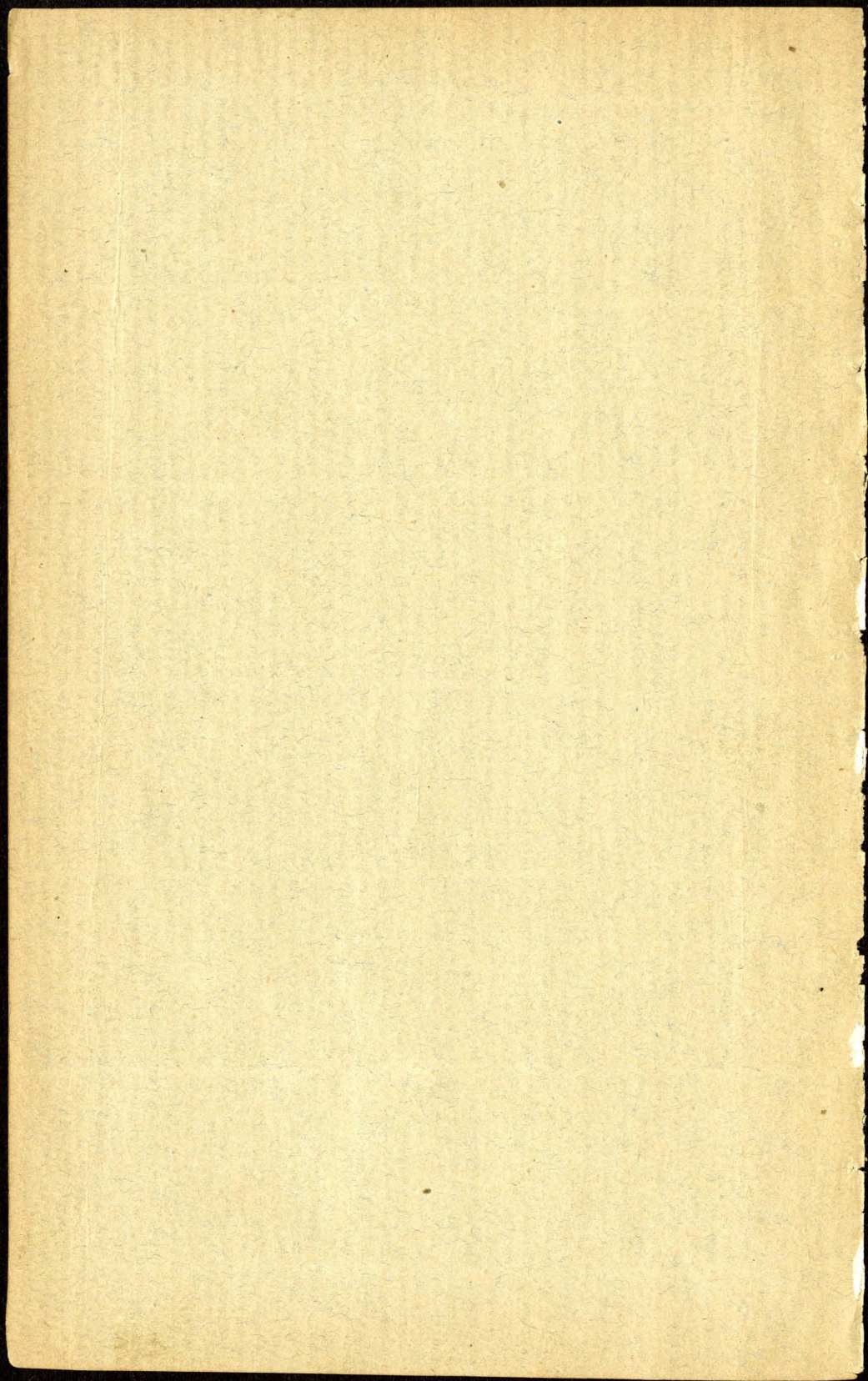
AUGUST 8, 9 and 10,

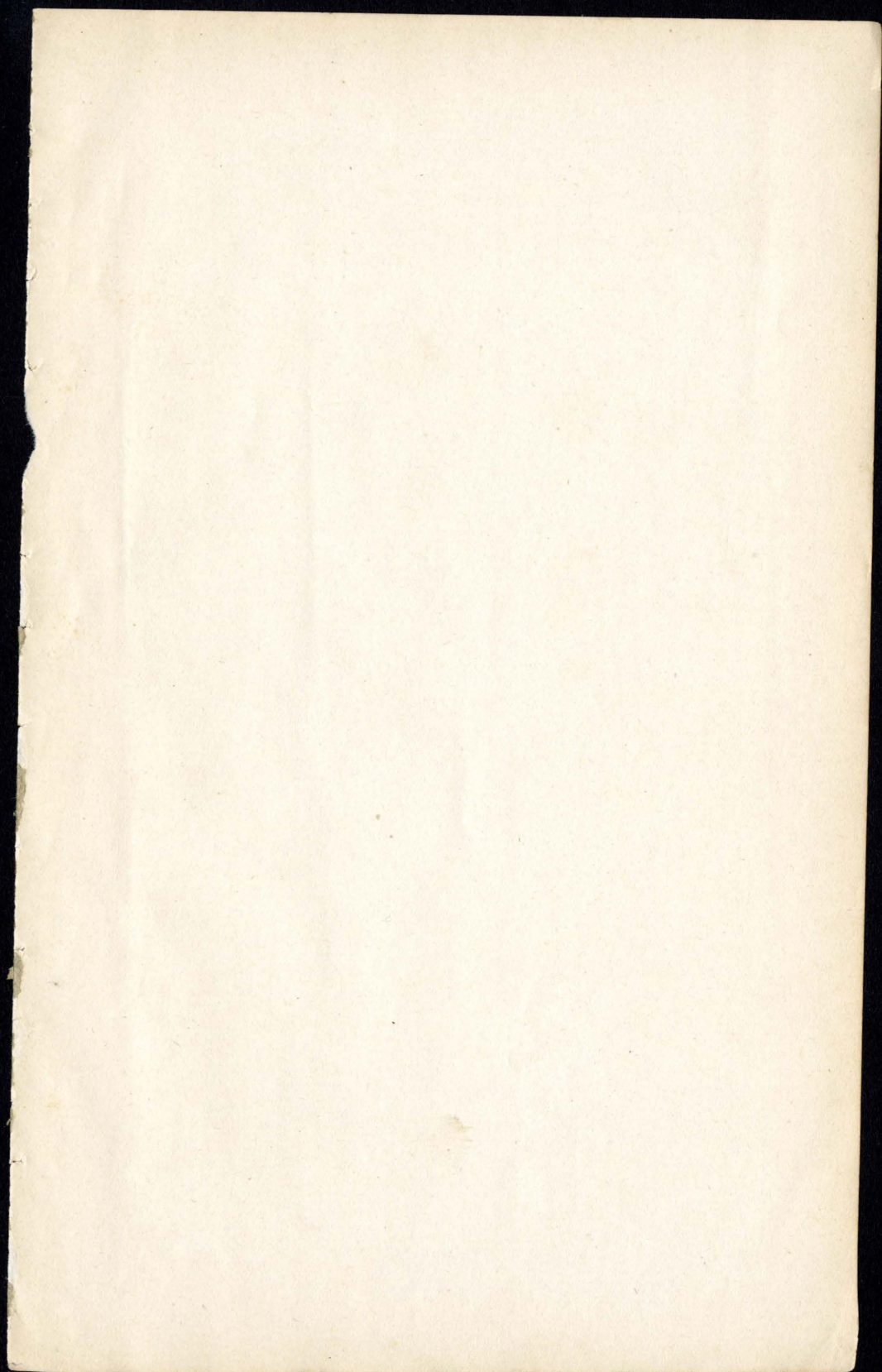
1899.

SOUTHEASTERN BAPTIST
THEOLOGICAL SEMINARY LIBRARY

Wake Forest, North Carolina
W. L. WRIGHT..... Moderator.
E. R. HARRIS..... Clerk.

Next session will be held with Clement Baptist Church, beginning Tuesday after first Sunday in August, 1900: nearest Railway station, Roxboro.





THE TRUNDLE PRINTERS.
DANVILLE, VA.
1899.

MINUTES

OF THE

Beulah Baptist Association,

— 1899. —

DIRECTORY.

OFFICERS.

W. L. WRIGHT, MODERATOR,.....TROY, N. C.
EDWIN R. HARRIS, CLERK,.....YANCEYVILLE, N. C.
B. S. GRAVES, TREASURER,.....YANCEYVILLE, N. C.

EXECUTIVE COMMITTEE.

J. P. Woody, C. J. Yarbrough,
J. B. Yarbrough, T. L. Lea.

ORDAINED MINISTERS.

W. L. Wright.....Troy, N. C.
D. J. Harris,.....Yanceyville, N. C.
L. N. Chappell,.....Milton, N. C.
Edwin R. Harris,.....Yanceyville, N. C.

PROCEEDINGS.

TUESDAY, August 8th, 1899.

The Beulah Baptist Association met in its sixty-fifth annual session with Yanceyville Baptist Church on Tuesday, August 8th, 1899.

Opened by singing, "There's a Stranger at the door."

Reading Scripture, Ps. 19 c., and Sermon by W. L. Wright, D. D.

Text: "Whether, therefore, ye eat or drink, or whatsoever ye do, do all to the glory of God." 1 Cor. 10:31.

Prayer by L. N. Chappell.

The Association adjourned until 2 o'clock P. M.

Benediction by W. L. Wright.

EVENING SESSION.

On motion, W. L. Wright was called to the chair as Moderator *pro tem*.

L. N. Chappell was appointed Reading Clerk.

Roll of churches was called. Letters were brought forward. Delegates were enrolled as follows:

Beulah—T. L. Lea, J. C. King, J. H. Hudgins.

Clement—C. T. Harris, J. M. Williams, N. R. Villines.

Ephesus—J. P. Woody, W. C. Pulliam, Dr. J. F. Swann.

Kerr's Chapel—M. R. Sartin, B. B. Baswell, W. S. Underwood.

Lea Bethel—James Murry.

Milton—J. P. Poteat, F. B. Jones, J. B. Walters.

Providence—J. A. Davis, R. E. Powell, W. A. McFarlin.

Shiloh—J. B. Yarbrough, J. A. Kersey, H. C. Myers.

Trinity—L. A. Gwynn, C. J. Yarbrough, A. Graves.

Yanceyville—Thos. A. Myers, Hunter Jeter, Hunter Moore.

The Association was then permanently organized by electing W. L. Wright, Moderator; Edwin R. Harris, Clerk; B. S. Garves, Treasurer.

The Moderator appointed on Devotional Exercises, Pastor and Deacons.

Report on Order of Business.

TUESDAY AFTERNOON.

Report on Periodicals.
Report on the Orphanage.

WEDNESDAY MORNING.

Devotional Exercises, 9:30, A. M.
State Missions, 10 A. M.
Ministerial Education, 11 A. M.

WEDNESDAY AFTERNOON.

General Education.
Wake Forest College.
Foreign Missions.

THURSDAY MORNING.

Devotional Exercises, 9:30.
Home Missions.
Sunday Schools.
Ministers' Relief.
Time and Place.

B. S. GRAVES,
E. G. COVINGTON,
EDWIN R. HARRIS.

The following visiting Brethren were recognized:

J. C. Caddell, of the Biblical Recorder; O. L. Stringfield, of the Baptist Female University; J. W. Cobb, of North Carolina Baptist, brings greeting from Bro. F. H. Jones; F. B. Hobgood, President of Oxford Female Seminary; R. A. Moore, of the Robinson Association.

The Moderator appointed on Finance, C. J. Yarbrough, T. L. Lea, Dr. J. F. Swann.

Report on Periodicals.

As the body is kept healthful and strong by feeding it upon pure, wholesome diet, so is the mind kept pure and strong by feeding it upon pure and good literature. Therefore, realizing this fact, we would recommend to the brethren and sisters of the Association, as food for the mind, the Biblical Recorder, North Carolina Baptist, Charity and Children, the International Lesson Helps, Periodicals of the S. B. Convention and the Foreign Mission Journal, that we may be strong in the Lord. Respectfully,

D. J. HARRIS,
T. L. LEA.

The Report was discussed by J. C. Caddell, J. W. Cobb, F. P. Hobgood, D. J. Harris.

The Chair requested R. A. Moore to take subscriptions for Charity and Children.

Report was adopted.

On motion, general Education was made a special order for 10:00 A. M., to-morrow.

O. L. Stringfield was appointed to preach Tuesday night.

Report on Orphanage.

We are glad to report the Thomasville Orphanage in a prosperous condition. During the past year contributions amounting to the handsome sum of \$13,000 was received.

For the first time within a large number of years the treasurer reported no debt. During the past year the home for the general manager which was a great need, was completed and paid for.

The number of children fed, clothed and educated were 170, at the average cost of less than \$5 per month per capita.

The Trustees will erect during the next year a nursery for boys. This is in addition to the excellent nursery now in use for boys and girls. The money in hand for this purpose was left us as a legacy, by the late Dr. R. D. Flemming, one of the Trustees and staunch-friends of the Orphans.

It is the purpose of the trustees also to erect, as soon as the means are in hand, an industrial building to be known as the Mills' Industrial Building. The churches will be called on for the funds and we heartily recommend that they contribute liberally to this object.

J. B. YARBROUGH,
A. B. WALKER.

On motion, the Association adjourned.

J. W. Cobb was appointed to conduct devotional exercises.

Benediction by J. W. Cobb.

WEDNESDAY MORNING.

Devotional exercises were conducted by J. W. Cobb.

Association was called to order by the Moderator.

The following Committees were appointed :

Education.—J. E. Jordan, D. J. Harris.

Periodicals—J. B. Yarbrough, A. B. Walker.

Orphanage—W. C. Pulliam, W. M. Faulkner.

Ministers, Relief—P. N. Howard, G. A. Harris.

Sunday Schools—B. S. Graves, L. N. Chappell.

Foreign Missions—E. R. Harris, Thos. Slade.

Home Missions—Dr. J. F. Swann, J. P. Woody.

State Missions—L. N. Chappell, T. L. Lea.

To nominate Executive Board—W. M. Faulkner, B. S. Graves, J. P. Woody. Time, Place, Preacher—W. C. Pulliam, J. B. Yarbrough, N. R. Villines.

The letter from Lea Bethel was received and read.

The report on orphanage was again taken up and discussed by F. P. Hobgood, J. C. Caddell, J. W. Cobb, W. L. Wright.

Collection was taken up amounting to \$6.40.

Question was adopted.

The following visiting brethren were recognized: C. R. Hairfield, of Scottsburg Normal College; J. A. Beam, of Bethel Hill Institute; L. H. Boyd, of Bethel Hill, W. H. Sledge, of Tennessee.

Report on Education.

We feel compelled to go forward in this work because we have everywhere at hand, much material needing to be educated.

We are better equipped for this work than ever before.

We have wide open, with excellent teachers, well located at astonishingly--low rates for board and tuition, many preparatory schools, Academies and Colleges with Public Schools for starting, Bethel Hill for higher work and Collegiate institution, Wake forest for young men.

Baptist Female University, Oxford and Murfreesboro for young women, all in easy reach.

There is a great call for educated workers from every avocation. The demand will furnish the supply. From the humble home you can hear God praised by the mingling of voice and organ. Education is driving back ignorance and superstition. Sickly sentimentality gives way to the simple, sensible plan of salvation and love for God and humanity.

The work of educating young ministers is worthy of the attention of everyone. Twenty-nine were received on the board for the Fall term at Wake Forest. There were a few more in the Spring.

Respectfully submitted,

EDWIN R. HARRIS,
THOS. SLADE.

Report was discussed by Edwin R. Harris, O. L. Stringfield, J. A. Beam, F. B. Hobgood, C. R. Hairfield.

On motion the report was adopted.

Report of Committee to Nominate Executive Committee.

We your Committee to nominate Executive Board, recommend the following brethren: J. P. Woody, J. B. Yarbrough, C. J. Yarbrough, T. L. Lea.

WM. M. FAULKNER,
B. S. GRAVES,
J. P. WOODY.

Report was adopted.

The Association was informally dismissed until 2 o'clock P. M.

Minutes of the Beulah Baptist Association.

9

WEDNESDAY AFTERNOON.

Devotional exercises conducted by J. A. Beam.

Roll was called.

On motion, State Missions was made a special order for to-morrow morning.

Report on Time, Place and Preacher.

Place, Clement Baptist Church. Time, Tuesday afternoon 1st, Sunday in August 1900. Preacher, W. L. Wright, L. N. Chapel, alternate.

W. C. PULLIAM,
J. B. YARBROUGH,
N. R. VILLINES,

On motion, report was adopted. Ministerial Education was discussed by J. A. Beam. Roll of Churches was called and pledges were taken.

The Committee being absent, the subject of Home Missions was discussed by J. C. Caddell, F. B. Hobgood and W. L. Wright.

Pledges were taken.

Report on Home Missions was then read.

Report on Home Missions.

The Home Board has done a great work, building churches, and spreading the Gospel of our Lord Jesus Christ.

One-eighth of all the white churches within the bounds of the Southern Baptist Convention were established by the Home Board, while fully one-half of 4,473 Baptist Churches in the states of Louisiana, Arkansas, Texas and Indian Territory owe their existence to the Home Board. The field of the Home Board covers the entire South and the Island of Cuba. There is not a State or Territory within the borders in which the Board has not gone preaching the Gospel to the destitute.

Last year it had 372 Missionaries, and this year it has been increased to 400. This Board has 2,580 churches, or stations and 653 missionaries. In addition to \$50,000 raised by missionaries, and expended in building houses of worship on their fields. The Board has invested \$5,619 in cash in places of worship. The increase in the amount raised by the States last year was \$7,744.17. This does not include value of boxes &c. Cuba is a place now open for a great work from the Home Board. And they are calling for help from over the waves. Let us do all in our power for this grand object.

Respectfully submitted,

GEO. HARRIS,
P. N. HOWARD,

On motion, report was adopted.

The following report on Sunday Schools was read by N. R. Villines.

Report on Sunday Schools.

The Sunday Schools (or more properly the Bible School) is next to the greatest factor in Christianizing the world, in following the ground of the unregenerate heart for the reception of gospel seed. Therefore it is absolutely necessary for every Christian to be in hearty sympathy and cooperation with the work. Not only will the world be brought to Christ sooner, but the individual Christian will be placed upon a higher plane of religious influence and by that means be able to resist temptation and in the end will wear a brighter crown. It pains us to know that so many members of churches take so little interest in the work. And many of them, fathers and mothers, by continual absence and indifference are leading their children to ruin, and if they are ever brought to Christ will make the same kind of indifferent Christian.

We urgently wish to impress our entire membership with the importance of continual, active attendance.

N. R. VILLINES,
W. C. PULLIAM,

Discussed by W. H. Sledge.

On motion, report was adopted.

In absence of the report, on motion, Ministerial Relief was discussed without a report by J. C. Caddell.

Pledges were taken.

On motion, adjourned to meet at 9:30 Thursday Morning.

Edwin R. Harris was appointed to conduct devotional exercises in the morning.

W. H. Sledge was appointed to preach at 8:30 to-night.
Benediction by W. L. Wright.

THURSDAY MORNING.

Devotional exercises were conducted by Edwin R. Harris.

The Association was called to order by the Moderator.

W. L. Wright was elected as a delegate to the Southern Baptist Convention.

B. S. Graves, D. J. Harris and A. B. Walker were appointed as delegates to the State Convention.

Report on State Missions was read by J. P. Woody.

Report on State Missions.

The report to the Convention last year on State Missions was encouraging.

The 103 missionaries have been increased to nearly 120. They reported 1,466 converts last year, and 132 baptisms than in any previous year. Being encouraged by the success of past labors, the Board asks for renewed efforts and larger help. From over the mountains a voice asking for help is heard. A voice irresistible, peculiar in its time, earnest and especially personal to our Baptist people, which if

unheeded, would become a sin of omission to us. And yet the work in the East cannot be dropped or made less important. The destitution is yet large, notwithstanding much has been accomplished. In our own Association. God has called to higher duties willing hearts and shoulders, whose willingness had allowed them to carry work, which, for the time proved to much for physical endurance. Shall we stand yet idly and let the cause suffer, and the sacrifice already made, be lost to us?

We recommend a favorable reply to the Board, when it asks for \$20,000 this year; and our heart's sympathies are extended to them in their efforts to push the work in the large "field of grain white to the harvest.

J. P. WOODY,
DR. J. F. SWANN.

Report was discussed by J. C. Caddell.

Pledges were taken.

Report was adopted.

Report on Foreign Missions.

"Those who hear and understand our Saviour's last command, "Go ye into all the world and preach the gospel to every creature," are coming to believe that the mission of Christ's churches is to evangelize the world.

The missionary spirit is the spirit of Christ, which says for God so loved the world that he gave His Son, and we so love God, that we must give the world a saving knowledge of Jesus through the gospel. Here is the vital principal, and the salt of Christianity. It is both the life of the Christian Religion and the power which enables the Christian Church to save the world. The more we as Christian workers receive this Spirit, and breathe forth the desire—the world for Jesus—the more we become like Christ, and receive the power and blessings of the Holy Spirit. This is the spirit of all missions, Home and State and Foreign; but the great Foreign Mission work more than all others fosters and conserves the true missionary spirit, and tones higher; and inspires all Home and State missionary endeavor. Let pastors and churches then give Foreign missions the first place in prominence in all church work, as it has first place in spiritual importance and power. We commend to pastors and churches.

1. That all our preaching and teaching be dominated by the true mission spirit; and that we have more and frequent missionary Sermons.

2. That we disseminate more missionary literature, especially leaflets and tracts from the Maryland Baptist Mission Rooms. That we all take and read the Foreign Mission Journal.

3. That we encourage Women's Missionary Societies, and Sunbeam Societies in this work; have frequent missionary days; and frequent collections for this object.

L. N. CHAPPELL,
T. L. LEA.

Report was discussed by W. L. Wright and W. H. Sledge.
Pledges were taken.

On motion, report was adopted.

The following report was read by J. P. Woody:

Report of Executive Committee, '98, '99.**PAYLOR'S SCHOOL HOUSE.**

Regular religious services were held monthly from the Association 1898, up to the sickness of Bro. Joe Lamberth, Dec'd, with good results. The site for church building has been secured and deed made to trustees of Ephesus Church to be transferred when organization is effected. All the lumber for frame of building has been subscribed. The success of this work depends upon securing a good active man to push said work to completion.

FITCHE'S AND BURKE'S SCHOOL HOUSES.

Regular preaching has been arranged for at Fitch's school house on Friday evening before the fourth Sunday in each month, and also at Burke's school house on Monday evening after each fourth Sunday.

Notwithstanding some few interruptions during the past severe winter the attendance on preaching has been good, much interest manifested, and evident signs of growth in our work are not wanting to encourage us. Much good has been realized from frequent visits, fireside talks and reading the scripture and prayer. Last summer we had a good meeting in an arbor near Fitch's school house, when several professions were made and deep interest manifested in good sized congregations. We hope to hold meetings this fall at both of these points. This is preempted territory of Anti-missionary Baptists. Here the Mormon Missionaries are now actively and zealously at work. We need more time given to work in this territory than a pastor of four churches can possibly give.

THOMSONVILLE

The work at Thomsonville is not so bright as it was a year ago, on account of the removal of several of our prominent workers. Services have not been regularly kept up during this year on account of sickness and the severe weather during the past winter.

The condition of our Associational work, as a whole, is such as to require the entire time of a Missionary.

We therefore recommend to the Association that they instruct their Executive Board for the coming year to correspond with Bro. White and arrange for the employment of a suitable man and to locate him as missionary on this field as soon as possible.

J. P. WOODY, Chairman.

Spoken to by J. C. Caddell, and D. J. Harris.

Report was adopted.

Vote of Thanks.

Resolved, that the thanks of this Association are due and are hereby tendered to the people of this town for their kindness in caring for this body and to the officials for the use of the house.

W. C. PULLIAM.

On motion, the resolution was adopted.

On motion, the Clerk was allowed his usual fee \$8.00.

The following Committee was appointed to prepare a memorial of Bro. Lamberth, Dec'd, and print it in the minutes: B. S. Graves and E. R. Harris.

Minutes were read and approved.

On motion, by J. A. Beam, a vote of thanks was tendered to the Moderator for his faithfulness.

The Association adjourned to meet at Clement Church on Tuesday after the first Sunday in August, 1900.

After singing "God be with you 'till we meet again," the benediction was pronounced by R. H. Moore.

The Woman's Missionary Society, Lea Bethel Baptist Church, To the Beulah Association :—Greeting:

Number of members, 4.

CONTRIBUTIONS.

State Missions,.....	\$1 68
Home Missions,.....	1 00
Foreign Missions,.....	3 76
Orphanage,.....	2 00
Total.....	\$8 44

President, Mrs. E. W. G. Thompson,.....Leasburg, N. C.
 Secretary and Treasurer, Miss Hattie James,.....Ridgeville, N. C.

REPORT OF TREASURER. AUGUST 10th, 1899.

Collected for State Missions.....	\$138 11
" " Home " 	3 55
" " Foreign " 	4 66
" " Education 	20 00
" " Orphanage 	16 66
" " Ministerial Relief.....	15 25
" " Minute fund 	15 97
Public Collection for Orphanage	6 40
	<hr/>
	\$220 60

DISBURSEMENTS.

Paid J. C. Caddell, Home Mission.	\$ 3 55
.. " " " Foreign Mission.....	4 66
" " " " Education.....	20 00
" " " " Ministerial Relief.....	15 25
" " " " Orphanage.....	23 06
" D. J. Harris, Associational Missionary.....	46 03
Due J. H. Lamberth Estate, for Ass'nl Missionary..	46 04
" L. N. Chappell, for Associational Missionary...	46 04
Paid E. R. Harris, Minute fund.....	15 97
	<hr/>
	\$220 60

B. S. Graves, Treasurer,

REV. JOS. H. LAMBERTH, DECEASED.

WHEREAS, it has pleased Almighty God to take from us our beloved brother and minister of the gospel, and whereas we sustain a great loss as an Association, in the death of Rev. J. H. Lamberth;

Therefore be it resolved,

1st. That we humbly submit to the will of God, knowing that He doeth all things well. That He hath given and taken away, and that His name is blessed forever.

2nd. That, We try to emulate his example in being energetic and zealous, "diligent in business, fervent in Spirit serving the Lord," Seeking ever to carry out the Master's command. "Go ye into all the world and preach the Gospel to every creature."

3rd. That, we place a copy of these resolutions on the minutes of the Beulah Association, in memory of his faithfulness.

B. S. GRAVES,
 EDWIN R. HARRIS.

FINANCIAL TABLE.

CHURCHES.	Pastor's Salary.	Incidental Expenses	Houses of Worship.	Poor Fund.	Repairs.	Home Missions.	Minister's Relief.	Foreign Missions.	State Missions.	Ministerial Education.	Orphanage.	Minute Fund.	Totals
Beulah.....	\$ 100 00	\$12 00	\$ 50	\$ 2 50	\$ 17 00	\$ 5 00	\$ 2 00	\$ 122 00
Clement.....	150 00	12 00	10 00	10 00	25 00	30 00	3 00	229 40
Ephesus.....	250 00	12 00	\$20 00	\$10 00	30 00	\$ 5 00	25 00	50 00	20 00	4 00	436 00
Kerr's Chapel.....	100 00	70	4 13	3 50	1 00	3 50	13 00	2 50	1 75	133 58
Lea Bethel.....	50 00	1 00	2 00	3 00	1 00	59 51
Milton.....	125 00	35 00	\$5 00	5 00	2 50	17 50	3 50	1 00	200 70
Providence.....	100 00	5 00	10 00	1 05	1 05	5 17	1 05	121 80
Shiloh.....	150 00	2 00	5 00	20 00	3 00	1 00	185 70
Trinity.....	100 00	8 00	1 75	9 20	11 50	2 00	185 19
Yanceyville.....	150 00	13 50	8 19	2 00	10 80	12 70	5 00	1 81	219 61
Totals.....	\$1275 00	\$78 20	\$20 00	\$24 13	\$5 00	\$59 25	\$15 25	\$75 14	\$170 45	\$39 50	\$52 08	\$17 51	\$1814 49

STATISTICAL TABLE.

CHURCHES.	Received by Letter.	Received by Baptism.	Restored.	Excluded.	Dismissed by Letter.	Died.	Males.	Females.	Totals.
Beulah.....		3			2		23	33	58
Clement.....		5			5	1	30	65	95
Ephesus.....		17	2	2	5		91	134	225
Kerr's Chapel.....	2	9				1	25	47	72
Lea Bethel.....							4	8	12
Milton.....					1	1	12	24	36
Providence.....		2			1		21	46	67
Shiloh.....		2	2		3	4	47	63	110
Trinity.....		1			2		16	25	41
Yanceyville.....		1		10	7	1	26	66	92
Totals.....	2	35	4	12	26	10	295	511	806

TABLE OF PLEDGES.

CHURCHES.	Home Missions.	Foreign Missions.	State Missions.	Education.	Ministers' Relief.	Totals.
Beulah.....	\$ 2 50	\$ 2 50	\$ 15 00	\$ 2 00	\$ 1 00	\$ 23 00
Clement.....	10 00	5 00	20 00	5 00	2 00	48 00
Ephesus.....	20 00	25 00	50 00	20 00	5 00	115 00
Kerr's Chapel.....	3 00	25 00	15 00	3 00	1 00	24 50
Lea Bethel.....	1 00	2 00	3 00	1 00	1 00	8 00
Milton.....	2 50	25 00	13 00	2 00	2 00	24 00
Providence.....	2 50	5 00	5 00	2 50	1 00	13 00
Shiloh.....	2 50	25 00	15 00	25 00	1 00	23 50
Trinity.....	5 00	5 00	10 00	2 00	2 00	25 00
Yanceyville.....	5 00	15 00	10 00	5 00	3 00	38 00
Totals.....	\$55 00	\$69 00	\$156 00	\$48 00	\$19 00	\$342 00

Churches, Pastors, Clerks and Time of Preaching.

CHURCHES.	PASTORS.	CLERKS.	TIME OF PREACHING.
Beulah	✓ D. J. Harris, Yanceyville, N. C.	✓ J. C. King, Hamer, N. C.	Third Sunday and Saturday before.
Clement	W. B. Morton, Roxboro, N. C.	Dr. J. I. Coleman, Hurdie Mills, N. C.	Third Sunday and Saturday before.
Ephesus	W. L. Wright, Troy, N. C.	J. P. Woody, Alton, Va.	First Sunday and Saturday before.
Kerr's Chapel	L. N. Chappell, Milton, N. C.	A. B. Walker, Stoney Creek, N. C.	Fourth Sunday and Saturday before.
Lea Bethel	✓ D. J. Harris, Yanceyville, N. C.	F. H. Murry, Ridgeville, N. C.	Second Sunday and Saturday before.
Milton	L. N. Chappell, Milton, N. C.	E. R. Burch	First Sunday and Saturday before.
Providence	✓ D. J. Harris, Yanceyville, N. C.	A. C. Davis, Purley, N. C.	Fourth Sunday and Saturday before.
Shiloh	✓ L. N. Chappell, Milton, N. C.	J. A. Kersey, Yarboro, N. C.	Second Sunday and Saturday before.
Trinity	✓ D. J. Harris, Yanceyville, N. C.	Thomas Slade, Lenox Castle, N. C.	First Sunday and Saturday before.
Yanceyville	L. N. Chappell, Milton, N. C.	B. S. Graves, Yanceyville, N. C.	Third Sunday and Saturday before.

Sunday School Statistics.

CHURCHES.	SUPERINTENDENTS.	POSTOFFICES.	Officers and Teachers.	No. of Scholars.	No. Volumes in Library.	Quartermen and Papers.	School Expenses.
Beulah	C. R. Vernon	Bushy Fork, N. C.	8	60	240	supply	\$ 6 00
Clement	W. C. Pulliam	Woodburn, N. C.	4	35	supply	supply	2 00
Ephesus	W. S. Underwood	Stoney Creek, N. C.	6	24	108	12 40	
Kerr's Chapel	F. B. Jones	Milton, N. C.	4	30	25		
Lea Bethel	John Baswell	Purley, N. C.	5	35	25		
Milton	T. M. Allen	Semora, N. C.	10	25	75	25	
Providence	B. S. Graves	Mission School		42		30	
Shiloh		Yanceyville, N. C.		5			5 50
Trinity							
Yanceyville							

207
37



