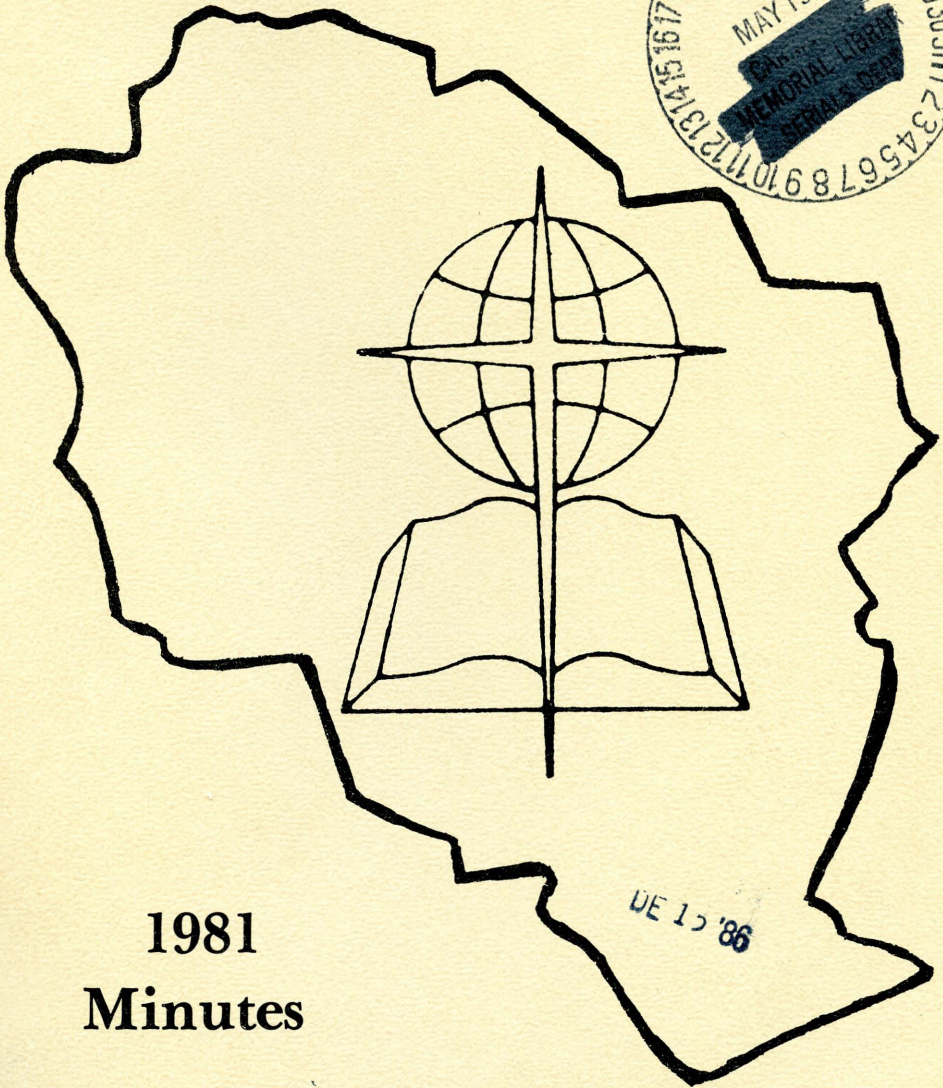


# Tuckaseige Baptist Association



1981  
Minutes

DE 15 '86

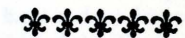
Sylva

THE LIBRARY  
SOUTHEASTERN BAPTIST  
THEOLOGICAL SEMINARY North Carolina  
BOX 752  
WAKE FOREST, N. C. 27587

1981

**TUCKASEIGEE BAPTIST  
ASSOCIATION**

Held with  
**OCHRE HILL BAPTIST CHURCH**  
August 13, 1981  
**HYATTS CHAPEL BAPTIST CHURCH**  
August 14, 1981



**THE ONE HUNDRED FIFTY-THIRD ANNUAL SESSION**  
To Be Held With The  
**EAST FORK BAPTIST CHURCH**  
August 12, 1982  
**JARRETT MEMORIAL BAPTIST CHURCH**  
August 13, 1982



Ray McCall  
John Enloe  
Annie Hoyle

DE 15 '86

**THE LIBRARY**  
**SOUTHEASTERN BAPTIST**  
**THEOLOGICAL SEMINARY**  
BOX 752  
WAKE FOREST, N. C. 27537

Moderator  
Vice Moderator  
Clerk  
Director of Missions

Published 1981 by  
the Edmonds Printing Company  
Lawrenceville, Virginia

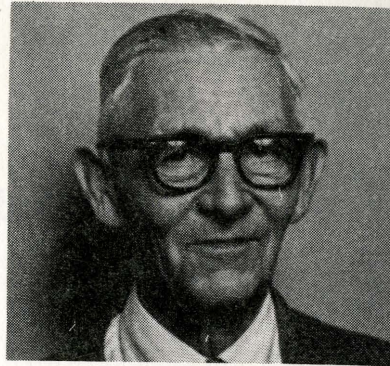
## Dedication

The Tuckasegee Baptist Association dedicates with pride the associational minutes of 1981 to five great men who have contributed much to its history and welfare. The five "Giants": the Reverend Joe Bishop, the Reverend Bill Ed Haskett, the Reverend Sterling Melton, the Reverend Joe Messer and the Reverend Robert Parris, have a lifelong interest in the people of this great association as is evidenced by their devotion and loyalty to the cause of ministering to its people. These men of simple pleasures have been and are dedicated to their calling and have the courage and wisdom to seek the truth and live by what they believe. They have served as the shepherds of a number of flocks. Their lives have extended over part of two centuries, but in spite of the years these devout men still have a deep interest in their fellowman's spiritual well-being. The Baptist membership of the Tuckasegee Baptist Association appreciate their worth and the fruitful works they have produced.

## Five Great Men Who Served The Lord As Preachers in the Tuckasegee Baptist Association



**THE REV. JOE BISHOP**  
1897 -  
Ordained 1926 at East Sylva.  
Served several churches in the  
association.



**THE REV. ROBERT PARRIS**  
1903 -  
Ordained in 1930 and served several  
churches in the association.



**THE REV. BILL JOE HASKETT**  
1896 -  
Ordained 1936.  
Served Mount Pleasant Church for  
16 years and several other churches  
in the association.



**THE REV. STERLING MELTON**  
1900 -  
Ordained by Sols Creek Church.  
Has served Sols Creek, Black  
Mountain, Katherns Chapel, Moses  
Creek and Johns Creek.

**THE REV. JOE MESSER**  
(Picture not available)  
1895 -  
Ordained 1950 at Rock Dale and  
served several churches in association.

## Table of Contents

Annuity Board .....	7
Association Directory .....	3
Association Growth .....	13
<i>Biblical Recorder</i> .....	10
Calendar of Events .....	1
Christian Action League .....	11
Church Training .....	13
Church Directory .....	34
Committee on Committees .....	4
Committee on Reports .....	3
Continuing Education .....	14
Constitution .....	22
Executive Board Representatives .....	32
Financial Statements .....	19
Historian's Report .....	15
Historical Table .....	31
Memorials .....	28
Messengers .....	29
Ministers Licensed .....	33 and 34
Ministers Ordained .....	33
Missions Report .....	15
North Carolina Baptist Foundation, Inc. ....	8
North Carolina Baptist Homes .....	9
North Carolina Baptist Hospital .....	9
Ordination Report .....	16
Order of Business .....	5
Proceedings .....	5
Proposed Budget .....	17
Statistical Tables .....	begin on page 45
Stewardship .....	16
Time, Place & Preacher .....	13
Truett Camp .....	14
Vacation Bible School .....	17

# 1981 - 1982 Calendar of Events

## SEPTEMBER

- 6-12 Brotherhood Leadership Week
- 11 W.M.U. Associational Leader Training
- 14-15 Preachers Camp Meeting, Truett Camp
- 16-19 National Conference for Baptist Associations, Ridgecrest
- 18-19 Statewide Deacons Retreat, Caswell
- 22 Preparation Week Workshop: "People Search"

## OCTOBER

- 2- 3 Sunday School Leadership Conference, Ridgecrest
- 4 W.M.U. Association Council Meeting, 3:00 p.m.
- 4-11 Week of Prayer for North Carolina Missions Offering
- 5 Church Leadership/Denomination Dialogue, Scotts Creek, 10:00 a.m.
- 5 Association Council, 7:00 p.m., Executive Committee, 7:30 p.m.,  
Scotts Creek
- 11 World Hunger Day
- 18 Cooperative Program Emphasis
- 23 Deacon/Pastor Fellowship
- 31-Nov. 1 North Carolina Baptist Men's Convention

## NOVEMBER

- 1--7 Royal Ambassador Week
- 2- 5 Baptist State Convention, Greensboro
- 13-14 Deacon/Pastor Conference, Asheville Area
- 15-18 Foreign Mission Study
- 23 "M" Night
- 29-Dec. 6 Week of Prayer for Foreign Missions

## DECEMBER

- 27 Student Day at Christmas

## JANUARY

### *MAKE YOUR WILL MONTH*

- 3 W.M.U. Association Council Meeting, 3:00 p.m.
- 4 Association Council, 7:00 p.m., Executive Committee, 7:30 p.m.,  
Scotts Creek
- 4- 8 January Bible Study
- 12 Sunday School Preparation Week Follow-Up
- 22 Deacon/Pastor Fellowship
- 24 Baptist Men's Day

## FEBRUARY

- 8- 9 State Evangelism Conference, Greensboro
- 14-20 W.M.U. Focus Week
- 15-16 Mountain Pastors' Workshop, Ridgecrest
- 21-24 Home Mission Study

## MARCH

- 7-14 Week of Prayer for Home Missions
- 9 Sunday School Gear-up Conference
- 11-12 V.B.S. Clinic (West)
- 14 Home Missions Day
- 14-21 Youth Week
- 19-20 W.M.U. Annual Meeting, Greensboro
- 29-30 Rural/Urban Fringe Conference, Asheville

# Associational Directory

## APRIL

- 1 V.B.S. Mini Clinic, Lovedale
- 4 W.M.U. Association Council Meeting, 3:00 p.m.
- 5 Association Council, 7:00 p.m., Executive Committee, 7:30 p.m.,  
Scotts Creek
- 13 Spring Sunday School Rally
- 18 Cooperative Program Day
- 19-23 Baptist Doctrine Week
- 22 V.B.S. Clinic, Lovedale
- 23 Deacon/Pastor Fellowship
- 25-May 9 Simultaneous Revivals

## MAY

- 2 Senior Adult Day
- 2- 9 Christian Home Study
- 11-12 Key Leadership Conference, Ridgecrest
- 16 Baptist Radio and Television Sunday
- 17-23 Associational Emphasis Week
- 21 W.M.U. Association Annual Meeting
- 30 Sunday School High Attendance Sunday

## JUNE

### VACATION BIBLE SCHOOL MONTH

- 5-11 Youth Church Training Week, Ridgecrest
- 8 New Teacher Training Workshop, Introduce One-a-Month Campaign
- 13-14 S.B.C., W.M.U. Meeting, New Orleans
- 15-17 S.B.C., New Orleans

## JULY

- 4 W.M.U. Association Council Meeting, 3:00 p.m.
- 5- 9 Youth Music Camp, Truett Camp
- 23 Deacon/Pastor Fellowship
- 23-24 "M" Night Training Workshop
- 26 Association Council, 7:00 p.m., Executive Committee, 7:30 p.m.,  
Scotts Creek

## AUGUST

- 7-13 W.M.U. Conference, Ridgecrest
- 10 Back to Sunday School Program
- 12 Annual Meeting
- 13 Annual Meeting
- 22 On to College Day
- 28 Association W.M.U. Officers' Workshop

**BOLD  
COMMITMENT**



- Moderator ..... Ray McCall, Webster, NC 28788
- Vice Moderator ..... Johnny Enloe, Rt. 1, Sylva, NC 28779
- Treasurer ..... Harry Vance, Rt. 3, Sylva, NC 28779
- Clerk ..... Annie Hoyle, P.O. Box 446, Cullowhee, NC 28723
- Assistant Clerk ..... Sherri Enloe, Rt. 1, Sylva, NC 28779
- Music Director ..... Coy Deitz, Rt. 2, Sylva, NC 28779
- Musicians ..... Janice Burnette, Sylva, NC 28779  
Jane McMahan, Sylva, NC 28779
- Sunday School Director ..... Roy Burnette, Sylva, NC 28779
- Vacation Bible School Director ..... Linda Turrentine, Sylva, NC 28779
- Church Training Director ..... Davis Hooper, Sylva, NC 28779
- Assistant Church Training Director ..... Joe Coker, Sylva, NC 28779
- Historian ..... Annie Hoyle, P.O. Box 446, Cullowhee, NC 28723
- Parliamentarian ..... Robert Blanton, Rt. 3, Sylva, NC 28779
- Trustees ..... Kelly Bradley (3 years), Sylva, NC 28779  
David Stillwell (2 years), Cullowhee, NC 28723  
R.O. Vance (1 year), Sylva, NC 28779
- Senior Adult Representative ..... Edith Israel, Sylva, NC 28779
- Children's Home Representative ..... Mary Queen, Rt. 3, Sylva, NC 28779
- Home for the Aging ..... Hardin Nicholson, P.O. Box 235, Balsam, NC 28738
- Christian Education ..... Johnny Enloe, Rt. 1, Sylva, NC 28779
- Stewardship ..... John Bunn, Sylva, NC 28779
- Annuity ..... David Blackney, Rt. 1, Whittier, NC 28789
- Baptist Literature ..... Mrs. J.D. Wyatt, Rt. 2, Sylva, NC 28779
- Youth Leader ..... Jennie Collins, Dillsboro, NC 28725
- Hospital Representative ..... Wesley Hooper, Sylva, NC 28779
- Brotherhood ..... Joe Hamilton, Sylva, NC 28779
- W.M.U. Director ..... Mildred Cowan, Webster, NC 28788
- Energy Consultant ..... Andrew Queen, Sylva, NC 28779

## Committee on Reports

### GENERAL OFFICERS

- Moderator ..... Ray McCall
- Treasurer ..... Harry Vance
- Clerk ..... Annie Hoyle
- Historian ..... Annie Hoyle

### PROGRAM LEADERS

- Brotherhood ..... Joe Hamilton
- Music ..... Coy Deitz
- Church Training ..... Davis Hooper
- Director of Continuing Education ..... John Reid
- Director of Deacons
- Director of Evangelism
- Director of Associational Missions
- Missions Committee Director ..... David Blackney
- Sunday School Director ..... Roy Burnette
- Vacation Bible School Director ..... Linda Turrentine
- Woman's Missionary Union ..... Mildred Cowan
- Energy Consultant ..... Andrew Queen

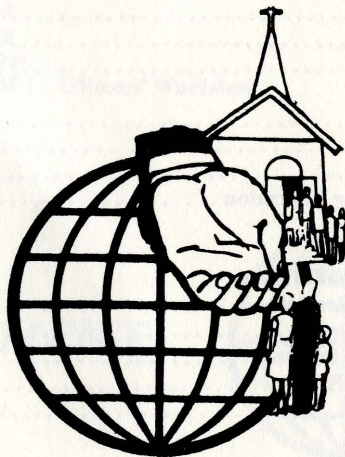
**ASSOCIATIONAL REPRESENTATIVES**

- Baptist Children's Homes ..... Mary Queen
- Baptist Homes for Aging ..... Hardin Nicholson
- Senior Adult Representative ..... Edith Israel
- Christian Education Representative ..... Johnny Enloe
- Stewardship ..... John Bunn
- Annuity ..... David Blackney
- Baptist Literature Representative ..... Mrs. J.D. Wyatt

**Committee on Committees**

The committee on committees has selected the following to serve for the 1981-1982 year:

- CONSTITUTION:** J.D. Wyatt, chairman; Roy Houston; John Hyatt.
- CONTINUING EDUCATION:** John Reid, chairman; Dennis Burrell; John Bunn.
- CREDENTIALS:** Eddie Stillwell, chairman; Abe Brocks; Lee Ensley; Joe Wilky; Laggy Nations.
- EVANGELISM:** Earl Holden, chairman; Trenton Connelly; Dillard Moore; Eddie Stillwell.
- FINANCE:** Mike Moore, chairman; Lewis Keener; Wade Mills; John Hyatt; Roy Buchanan; Harry Vance.
- MEMORIALS:** Annie Hoyle, chairman; Hilda Hoyle; Margie Messer.
- MISSIONS:** Kathleen Buchanan, 2 years; Carolyn Lewis, 3 years; David Blackney, 3 years; John Enloe, 1 year.
- NOMINATIONS:** Robert Blanton, chairman; Wesley Hooper; Roy Melton; Lewis Keener; Alice Cabe.
- ORDER OF BUSINESS:** Glen Blanton, chairman; Lincoln Shuler; Ben Cabe.
- ORDINATION:** J.D. Wyatt, chairman; Edwin Bryson; Pat Correll; Evert Wilson; George Tuthill.
- SPECIAL MINISTRIES:** Mrs. John Enloe, chairman; Mrs. John Chapman; Ms. Gail Hensley; Wanda Mills; Ruth Bradley.
- TIME, PLACE, and PREACHER:** Harry Moses, chairman; J.E. Carner; Tom Maddeb.
- TRUETT CAMP:** Mildred Cowan, 2 years; Joe Hamilton, 3 years.



**Order of Business**

**THEME: "Let the Church Reach Out."**

- Ochre Hill Baptist Church Thursday, August 13, 1981
- 5:30 p.m. Supper
  - 6:30 Convening of Association ..... Moderator, Ray McCall
  - 6:35 Worship and Hymn ..... Harry Vance
  - 6:50 Adoption of Book of Reports ..... Pat Correll
  - 6:45 Organization of Meeting ..... Ray McCall
  - 7:00 Recognition of New Pastors ..... Ray McCall
  - 7:10 Hymn ..... Harry Vance
  - 7:15 State Convention Representative ..... Tom Lolley
  - 7:35 Organizational Reports
  - 7:35 W.M.U. .... Mary Bennett
  - 7:40 Church Training ..... Nelda Reid
  - 7:45 Deacon Organization ..... Lincoln Shuller
  - 7:50 Sunday School ..... Roy Burnette
  - 7:55 Vacation Bible School. .... Linda Turrentine
  - 8:00 Finance Report ..... Mike Moore
  - 8:10 Nominating Committee ..... Robert Blanton
  - 8:20 Miscellaneous Business
  - 8:30 Hymn ..... Harry Vance
  - Message ..... Rev. Pat Correll
  - Adjournment

- Hyatts Chapel Baptist Church Friday, August 14, 1981
- 9:15 a.m. Call to Order ..... Moderator, Ray McCall
  - Worship ..... Host Church
  - Hymn ..... Harry Vance
  - 9:30 Committee Reports
  - 9:35 Ordination ..... J.D. Wyatt
  - 9:40 Time, Place and Preacher ..... Harry Moses
  - 9:45 Christian Action League ..... Coy Privette
  - 10:00 Home for Aging ..... Hugh Starnes
  - 10:15 *Biblical Recorder* ..... Marsh Grant
  - 10:30 Truett Camp ..... Kenneth Crawford
  - 10:45 Digest of Letters ..... Annie Hoyle
  - 10:50 Baptist Hospital ..... Calvin Knight
  - 11:45 Message ..... Rev. David Blackney
  - 12:05 Memorial Service
  - Adjournment
  - Benediction

**Proceedings**

Thursday, August 12, 1981 Ochre Hill Baptist Church

The one hundred fifty-second annual session of the Tuckaseegee Baptist Association began its annual session with a dinner at the Ochre Hill Baptist Church. Approximately 250 messengers and visitors enjoyed the fellowship and the delicious food served at 5:30 p.m. by the ladies of the church.

The Rev. Ray McCall, moderator, called the meeting into session at 6:30 p.m. Following the congregational singing of "We are Marching to Zion" directed by the Rev. Harry Vance, accompanied by Mrs. Sherri Enloe at the piano and Mrs. Fisher at the organ, the messengers were called into a business session. The following business was transacted:

1. The Book of Reports, prepared by Annie Hoyle, clerk, were adopted and approved with some adjustment to the order of business for the Friday morning session.
2. Pastors new in the association since the last annual session in August, 1981, were recognized.

3. The Rev. Tom Lolley, area missionary, was introduced by the moderator. The Rev. Lolley gave the state missions report in which he stated that under the new plan, all agencies received more funds than when collections for each agency was made separately.

The Tuckaseegee Baptist Association has been paired with the West Virginia to assist with mission work in that state. He reminded the messengers of the importance of prayer support as well as financial support for our missionaries and workers. He emphasized the importance of "People Search" and encouraged the people to push the Cooperative Program giving an order that the goals set for 8.5 million by '85 might be reached. He expressed thanks for contributions given over the passed year but stressed that this was not enough to reach the set goal.

4. Organizational reports were given as recorded. These reports appear in these minutes except where a notation to the opposite is made.

- a. CHURCH TRAINING: Report made by John Reid in absence of the chairperson, Nelda Reid.
- b. SUNDAY SCHOOL: Roy Burnette
- c. VACATION BIBLE SCHOOL: Linda Turrentine
- d. FINANCIAL: Mike Moore. A motion that the proposed budget for 1982 be adopted was passed.

A motion made by John Reid that the salary of the interim secretary be paid from the money allotted for the director of missions. Motion passed.

Harry Vance reported that 37 of the 48 churches in this association had paid into the associational mission fund this year. He also explained that the associational year for the finances extends from October 1 of one year through September 30 of the following year.

In compliance with the bylaws of the associational constitution the books of the treasurer had been audited twice and had been found in good condition both times.

- e. NOMINATION COMMITTEE: Robert Blanton. This report was adopted as presented with the addition of the Rev. Ray McCall's name being inserted as moderator for the next year.
- f. COMMITTEE ON COMMITTEES: Wesley Hooper. The report was adopted with the correction of one error; namely, the changing of Cabe's name to Coker as the assistant to church training.

5. Miscellaneous

- a. The Rev. Jack Hinson made a report and an appeal for membership and interest in the work of the Family Life Council in Jackson County.
- b. Annie Hoyle, clerk, presented the list of retired pastors that had been recommended as those persons for whom the 1981 minutes were to be dedicated. The list was adopted with the request that the Rev. Sterling Melton's name be added. The motion was passed.

6. A motion was made, seconded and passed that the collection received at this meeting be turned over to the building fund of the association.

The message of the evening was brought by the Rev. Pat Correll, pastor of the Ochre Hill Church.

The Rev. Harry Vance rendered a solo.

The second session of the Tuckaseegee Baptist Association convened on Friday, August 13, 1981 at the Hyatts Chapel Baptist Church. The Moderator Ray McCall presided. The following reports were heard and acted on:

1. WOMAN'S MISSIONARY UNION: Mary Bennett. A written report was not submitted.
2. THE ORDINATION REPORT: J.D. Wyatt
3. THE TIME, PLACE AND PREACHER: Harry Moses
4. THE CHRISTIAN ACTION LEAGUE: Coy Privette. This report is to be sent to the clerk for inclusion in the minutes.
5. BIBLICAL RECORDER REPORT: Marsh Grant
6. HOMES FOR THE AGING: Hugh Starnes
7. BAPTIST HOSPITAL: Calvin Knight. In addition to the information provided in the report he spoke of holistic and wholistic medicine and pointed up how both kinds were needed and the Baptist Hospital provided both for it deals with the whole person and his needs in all areas.
8. THE DIGEST OF LETTERS: Annie Hoyle, clerk.
9. RESOLUTIONS: No report was presented.
10. CHILDREN'S HOMES: Report given by one of the social workers.
11. The Rev. John Reid introduced Sue Fitzgerald who spoke on the materials and services from the Center for Christian Education Ministries on Mars Hill College. She gave material to all those interested.
12. The message of the morning was brought by the Rev. David Blackney, pastor of the Shoal Creek Baptist Church. His sermon topic was "Gazing and Going," Acts 1:6.
13. Harry Vance sang a solo.
14. The memorial service for the 77 members who were deceased during the year was based on "The Seasons of Life."
15. The one hundred fifty-second session ended with a challenge from the Moderator Ray McCall urging the association to carry on without a director until such time that one could be secured.
16. A delicious luncheon was served by the ladies of the Hyatts Chapel Baptist Church to 78 messengers and visitors.

### 1981 Annuity Board Report

"Unprecedented Growth and Startling Change!"

"Nineteen hundred eighty has been a year of unprecedented growth and startling change," according to Dr. Darold H. Morgan, president of the Southern Baptist Convention Annuity Board.

Key statistical highlights in 1980 included:

1. A 13th Check amounting to 10 percent of a year's benefit was mailed to annuitants who retired before 1980.
2. A total of \$21,059,479.00.
3. Insurance benefits through the board's church, agency and seminary programs amounted to \$15,955,965.00.
4. Total assets held in trust at the close of the year equaled \$806,518,757.00.
5. Premium income totaled \$67,938,590.00 including contributions and relief receipts. A total of \$47,121,138.00 was designated for the Fixed Fund, \$3,620,501.00 was earmarked for the Balanced Fund and \$11,063,513.00 went into Plan A.
6. At the close of 1980, the board counted 20,527 church and agency member accounts in Plan A; 47,701 in the Fixed Fund; 6,033 in the Balanced Fund and 3,376 in the Variable Fund.



## Department of Retirement Planning

### Baptist State Convention of North Carolina

In North Carolina as of March 31, 1981, 3,114 staff members of 2,353 churches and associations are participating in the Southern Baptist Retirement Program.

Through March 31, 1981, we had processed the following:

- 70 Southern Baptist Retirement Program applications
- 21 applications for age retirement benefits
- 442 upgrades

One of the most exciting and far reaching aspects of our work for 1980 has been the printing of and response to the study guide, *Planning The Rest of Your Life*. This booklet is available from our office for church staff members, small groups and church families who wish to have help in planning their retirement years.

### ASSOCIATION

In the Tuckaseegee Association 17 churches and 19 staff members are participating in the retirement program. Of this number three are still participating on the minimum of \$33.34 per month. There is a great need to upgrade this to 10 percent of total salary for staff members.

Respectfully submitted,  
Sam O'Neal, Director,  
Department of Retirement Planning

## The North Carolina Baptist Foundation, Inc.

During the past year, 23 new trust funds valued at \$385,016.00 were established with the North Carolina Baptist Foundation. Coupled with the additions to existing trusts, total new assets held for the various missions and institutions increased the value of trust assets by \$453,877.00.

- Foreign missions trust funds increased by approximately \$26,000.00.
- Home missions trusts increased by \$8,000.00.
- Baptist Children's Homes of North Carolina trusts increased by \$19,000.00.
- Southeastern Seminary by \$12,250.00.
- Fruitland Bible Institute by \$33,000.00.
- North Carolina Baptist Homes by \$1,500.00.
- Local church trust funds, including cemetery, scholarship and mission funds by \$5,000.00.
- Cooperative Program by \$7,000.00.
- Statewide student loan fund by \$115,000.00.

Thirty-eight percent of the market value of all assets held by the foundation were made as gifts by persons desiring to receive income for the remainder of their lifetime and at death have the trust funds pay income to missions or Baptist institutions.

More families are utilizing the memorial gifts as a means of providing mission support on a continuing basis. Individual trust accounts are established with only the income being distributed in the name of the deceased family member. Generally the mission cause named to receive the income was loved and supported during the lifetime of the family member.

Private and confidential conferences are scheduled by foundation staff members with individuals desiring to seek direction in estate planning and giving.

Respectfully submitted,  
Edwin S. Coates, Executive Secretary  
James R. Maynard, Chairman of Board  
P.O. Box 26508  
Raleigh, North Carolina 27611

## North Carolina Baptist Homes, Inc.

As we look back over the past 30 years of ministry in our Baptist Homes, it is a real inspiration to see where we have been and to meditate on the many blessings that God has so richly bestowed upon us. He has brought us from one home in 1951 to a total of six homes, apartment complex, and a skilled nursing unit; from one resident to a total capacity for 300 persons in 1981. These have been good years, and God has used North Carolina Baptists to bring this special ministry to older people a long way. Where we go from here is certainly, as always, in the hands of the Lord, but depends largely on where North Carolina Baptists want to go.

Quite frankly, we are at a standstill. Crippling inflation has caught up with us and is eating into the very vitals of our existence. We are still giving the same high quality of Christian care to each of the residents in the six homes, nursing care unit, and the apartment complex. It is a struggle and a juggle between income and expenditures.

Building plans for a desperately needed 70-bed addition to our current nursing care unit and the Hayes Home have been held up by regulatory red tape for years. Now that the state health laws have been altered to permit the building of these beds, it doesn't appear that we could wisely borrow the money at the current interest rates.

Two things are apparent. One, Baptists must be informed of our needs and do all possible to increase their gifts accordingly through the regular channels - the Cooperative Program and the North Carolina Missions Offering. Two, North Carolina Baptists must help us find ways of raising money for development and expansion to meet the needs of current residents and the needs of growing numbers of older adults.

Through the 1980 gifts through our Cooperative Program and the North Carolina Missions Offering are a little more than \$550,000.00 (18 percent of all income), these gifts are not commensurate with our current population growth and the ministry support needs of the homes.

The general board of the Baptist State Convention has joined us in our concerns and has appointed a special study committee to take a serious and close look at the financial needs of our Baptist Homes.

We will continue to trust our Heavenly Father for His blessings upon the homes' vital ministry to older adults. We will keep faith with Him and with North Carolina Baptists and strive to give the highest quality care to each resident of the North Carolina Baptist Homes. We will believe that our future is as bright as the promises of God Himself and as sure as the love and devotion of North Carolina Baptists.

Respectfully submitted,  
W.A. Poole, Executive Director

## 1981 Baptist Hospital Report

During the past decade, life expectancy in this country has increased by three years, to 73.2 years. Important factors in this increase have been the development of new medical technology and the application of new medical knowledge gained through research.

Baptist Hospital has had a significant part in this developing knowledge and technology. During the past year, the hospital has expended more than \$3 million on technological equipment, including the installation of an 18MEV linear accelerator for the improved treatment of patients with certain types of cancer. A new cardiocatheterization laboratory increases the capability of identifying and locating heart problems. A cell saver, the first in North Carolina, contributes to the recovery of many surgical patients. This technology salvages the patient's own blood, cleans it and

We are praising the Lord for some victories that He has shared with us this year, as well as other developments in total perspective of our work.

I. On January 1, 1981, Coy C. Privette began as our executive director upon the retirement of D.P. McFarland who had served for 20 years in this capacity.

II. It has been a privilege to assist in four campaigns already this year:

1. Lumberton defeated an A.B.C. liquor referendum;
2. Blowing Rock defeated a liquor-by-the-drink referendum;
3. Marion defeated a beer referendum; and
4. Old Fort also defeated a beer referendum.

III. The league was involved in its most extensive legislative program in its entire history. There were some victories; and some defeats; and some delays. A brief review of these follows:

1. Senate Bill 128 and House Bill 230: Drug Paraphernalia Act - To prohibit the manufacture, delivery, sale, possession and use of drug paraphernalia. Result: Enacted into law.
2. Senate Bill 324: An Act to Decriminalize Marijuana up to Four Ounces (160-240 joints) five trustees appeared before the Senate committee opposing the measure. Sent to a subcommittee that recommended a study committee to re-examine marijuana laws. Result: Senate Appropriation Committee refused to fund the study committee.
3. Senate Bill 463: An Act to Grant Limited Driving Privileges to Those Refusing the Breathalyzer. League president appeared before the Senate panel opposing the measure that would basically destroy our implied consent law. Result: Bill was never reported out of committee.
4. Senate Bill 295: An Act to Repeal Adversary Hearing in Obscenity Law. The measure overwhelmingly passed the Senate, but ran into trouble in the House Judiciary Committee I. Result: Established a legislative research committee to study obscenity laws.
5. Senate Bill 451: An Act Requiring Parental Notification Prior to Performing Abortion on Minor. Cleared Senate Judiciary Committee but ran into trouble on the Senate floor. After 12 amendments, it was finally approved and sent to the House where it went to a hostile committee. A House subcommittee gave the proposal an unfavorable report. Result: House Judiciary Committee III adopted its subcommittee's recommendation for an unfavorable report.
6. Senate Bill 589: An Act to Prohibit Open Beer or Wine Containers in Motor Vehicles. The measure passed the Senate with a strong vote, but it was stalled in the House A.B.C. Committee. Result: Will be before the House in mini-session, June, 1982.
7. Senate Bill 191: An Act to Allow Counties and Municipalities to Prohibit or Regulate the Public Possession and Consumption of Beer and Wine. Even though a Senate A.B.C. Subcommittee gave the measure an unfavorable report, it was overturned by the entire committee and sent to the Senate floor and passed with no opposition. Result: It is in the House A.B.C. Committee and will be considered in the June 1982, mini-session.
8. Senate Bill 320 and House Bill 247: An Act to Amend the Constitution to Reserve to the People the Right of Initiative and Referendum. Cleared the Senate Committee on Constitutional Amendments. Result: Failed by one vote to obtain the necessary three-fifths margin.
9. House Bill 963: An Act to Raise the Drinking Age of Beer and Wine from 18 to 20. Measure was changed to a resolution asking for a study commission. Result: Appropriation committee refused to fund the study committee. Measure killed.

readies it for transfusion back into the patient in a matter of minutes, making transfusion faster and less expensive. The diagnosis and treatment of epilepsy has been greatly enhanced by the development of a video telemetry system which used cameras to record a patient's symptoms during a seizure. This makes it possible to identify and classify a seizure, thus enabling the physician to determine the precise drug dosage needed.

The hospital's ministry has been aided by completion and occupation of the Focus Building. Other hospital space is undergoing renovation for more effective use.

Several staff members from the Medical Center have participated in short term mission assignments during the past year, many of these in overseas areas.

The Department of Pastoral Care continues to provide a pastoral ministry to hospital patients and their families, individual and group counseling in crisis situation, clinical pastoral education in both crisis ministry and pastoral counseling, at several levels, and numerous events in Christian enrichment and development. The Minister's Care Plan continues in which the Baptist State Convention provides financial assistance for ministers and/or their families who seek pastoral counseling through one of the department's regional centers.

Again this year, our hospital has won awards in cost effectiveness programs, indicating our continuing efforts to keep our operating costs and patient charges as low as possible.

During the year, the hospital's charter revision has been brought to successful and satisfactory conclusion.

In 1980, our churches contributed \$457,459.56 to the hospital through the Cooperative Program and \$353,397.73 through the North Carolina Missions Offering and designated gifts.

Respectfully submitted,  
Calvin S. Knight, Church and Community Relations Director

### The 1981 *Biblical Recorder* Report

Again this past year, the *Biblical Recorder* has reminded us all of the values of good church-pastor relations. This is just one of many subjects the *Recorder* seeks to cover for North Carolina Baptists.

The editor believes strongly in the local church as well as the ministry and work of the pastor. As all of us know, nothing can take the place of a good church and a good pastor.

And yet, we also know that there are those in our midst who do not believe in this as much as they should. The *Recorder* is a constant reminder to us that a bedrock of Baptist life is a strong local church served by a dedicated pastor.

The *Recorder* also challenges us in many other ways. For example, it reported that there was a net gain of only 21 new churches in our convention in the past 10 years. This shocked many people, especially in view of the number of new churches organized in the last 50 years and in the population growth of our state in the last decade.

When people know the truth — and truth must be spoken in love — we have a better convention, better churches, better associations and better individual Christians. The *Recorder* is that instrument of communication that keeps us closer together as Baptists.

If you are not receiving the *Recorder*, you are missing something vital to your Christian life. The cost is still much less than one-half the price of a first class stamp. Surely, every church and every individual can afford that much.

Respectfully submitted,  
J. Marsh Grant, *Biblical Recorder* Editor

10. Senate Bill 664: An Act to Establish a Statewide Referendum to Raise Beer and Wine Drinking Age from 18 to 21. Gained an unanimous vote in the Senate Committee on Election Laws. Ran into trouble on the Senate floor due to a projected loss of \$4 million on revenue due to reduction on sales enacted, Result: Sent to Senate Finance Committee and died in committee.
11. Senate Bill 59: An Act to Increase Taxes on Alcoholic Beverages. This measure was intended to provide revenues for the highway fund in lieu of a gas tax. A committee substitute was presented to provide for a lesser tax increase to generate revenue for the general fund to replace funds transferred to the highway fund. Result: Bill is stalled in the Senate Finance Committee and will be considered in the fall budget session.
12. House Bill 513: An Act for a Statewide Referendum on Beverage Deposit Legislation (the Bottle Bill). Ran into tremendous opposition from beer beverage industry along with the manufacturers of bottles and cans, convenient and supermarket operators. Result: Killed in House Small Business Committee.
13. House Bill 9: An Act to Rewrite A.B.C. Laws. This was the report of a legislative study commission that rewrote the A.B.C. laws. Result: Removed a provision that would have allowed liquor billboard advertising and provision that would have removed the 50-foot restriction of an outlet to a church or school.
14. Senate Bill 591: An Act to Prohibit Liquor Sales in Satellite Annexed Areas. This measure was directed to prohibit establishments in dry areas from being annexed to a wet area in order to sell alcoholic beverages. Result: Died in Senate A.B.C. Subcommittee.
15. House Bill 1239: An Act to Provide for Forfeiture of Motor Vehicles Used in Commission of the Offenses of Driving Under the Influence and Wreckless Driving While Intoxicated. This measure would allow the courts to confiscate a motor vehicle and be sold at public auction if driver had been convicted of D.U.I. and driving with a revoked license. Result: Postponed indefinitely by House Judiciary Committee.
16. Senate Bill 29: Appropriation Bill (Budget). An amendment to remove funding of medically unnecessary abortions. Result: Amendment defeated and \$2 million was approved for abortion funding.

IV. The league is now involved in Project 1000, an effort to enlist 1,000 churches or individuals that will become a prayer partner and to make financial contributions in the league's ministry. The league's extensive legislative program has placed a heavy demand on its financial resources, and this is why you are needed to become a part of Project 1000.

The league seeks to help us to be that salt and light that our Lord has commissioned us to be so that we might preserve the moral and spiritual principles upon which our nation was established.

Edmund Burke put it so well years ago: "All that is necessary for evil to flourish is for good people to do nothing."

Respectfully submitted,  
 Thomas M. Freeman, President  
 Christian Action League of  
 North Carolina, Inc.

"Five associations reported 1980 growth in the measuring areas of membership, members' giving, Cooperative Program, Sunday school, baptism, W.M.U., brotherhood, church training, and music. These are Cabarrus, Polk, Raleigh, Tuckaseigee, and Wilmington. Two mountain associations led the way in membership increases: Cheoah, 15 percent and Truett 17 percent. Twenty-four associations reported their churches increased Cooperative Program giving by more than 15 percent: Anson, 26 percent; Avery, 15 percent; Chowan, 16 percent; Dock, 51 percent; Eastern, 23 percent; Rocky Face, 15 percent; Sandy Creek, 16 percent; South Roanoke, 15 percent; South Yadkin, 17 percent; Stone Mountain, 32 percent; Stony Fork, 31 percent; Montgomery, 19 percent; Pilot Mountain, 15 percent; Surry, 27 percent; Transylvania, 21 percent; Truett, 27 percent; and Yancey, 57 percent. Two associations reported strong Sunday school growth: Alleghany, 16 percent and Tuckaseigee, 14 percent. Twenty-six associations listed brotherhood enrollment gains of 39 percent or more.

"W.M.U. Start" teams are at work to lead Baptist Women; Sunday school ASSIST teams are being trained for Sunday school growth; a church training "new units" program is underway; and the stewardship program offers guides for enlisting membership growth in giving.

"Some among us insist that our methods no longer work. Here again we need a willing self-examination. Is it that our methods will no longer work, or is it that we are unwilling to work the methods?"

"Can we again be the willing church -- willing to use good methods? Will we be the willing church in such vital areas as our witnessing for Christ, facing dangerous issues, and responding to great opportunities?"

from In Search of the Willing Church  
 Cecil A. Ray

### Time, Place and Preacher Report

Thursday, August 12, 1982	5:30 p.m.
Place:	East Fork Baptist Church
Preacher:	Trenton Connelly
Alternate Preacher:	Roy Burnette
Friday, August 13, 1982	9:30 a.m.
Place:	Jarrett Memorial Baptist Church
Preacher:	George C. Tuthill
Alternate Preacher:	Joe Smith

Respectfully submitted,  
 Harry Moses, Chairman  
 J.E. Carnes, Tom Madden

### 1980-81 Annual Church Training Report

The theme for church training this year was "Equipping for Personal Growth" and the major highlight of the year was "M" Night where this theme was developed. The "M" Night service was held at Scotts Creek Baptist Church at 7:30 p.m. on November 24, 1980 with 301 people present representing 17 churches across the association. The Scotts Creek choir led the congregation in worship through song and provided special music selections and a skit. The Rev. David Blackney, pastor of Shoal Creek, delivered the message for the evening. He spoke of the tools God gives

us, through the Holy Spirit, to enable us to grow: the Word, prayer, and fellowship and witnessing. The attendance banner was awarded to Long Branch Baptist Church with 83 members present. The enthusiasm shown at "M" Night is proof that many people in our association agree that church training is important.

Respectfully submitted,  
Nelda Reid  
Associational Church Training Director

### Continuing Education

The response to the opportunities offered through seminary extension study has declined this past year. Two classes for pastors failed to materialize for lack of attendance. Other classes for lay persons failed to achieve the desired goals. A minimum number enrolled to support the class. The one exception to this report is in the cashiers area. The Rev. Kenneth Fugate and the Rev. Trenton Connelly have enjoyed strong classes.

A pastors' workshop was scheduled last fall. A two-night session led by local pastors was designed to help pastors enhance preaching and leadership skills. Attendance was very poor the first night and the session was cancelled the second night.

The immediate future of the seminary extension program is in jeopardy in the association. There is a fundamental lack of commitment to the discipline and to the time demands required for this type of study.

Efforts will continue to offer seminary extension where and when it is received by the local churches.

Respectfully submitted,  
John Reid, Chairman  
Seminary Extension

### Truett Camp Report 1981

This report is for the eight years we have been with Truett Camp.

1973 Total attendance	350
Total saved	22
1974 Total attendance	320
1975 Total attendance	400
1976 Total attendance	386
Total saved	22
1977 Total attendance	700
Total saved	84
1978 Total attendance	700
Total saved	
1979 Total attendance	944
Total saved	47
1980 Total attendance	1,058
Total saved	39
1981 to July 15	
Total attendance	339

We say thanks to all the wonderful people who have worked with us to make Truett Camp a great success.

Thank you,  
George K. Crawford

### Historian's Report

Many events that make church history and collectively associational history, are lost to posterity because they are never recorded. Although the event at the time many seem somewhat unimportant it may really be the beginning of something that will ultimately become a major item of importance. The historical events reported in the Tuckaseegee Baptist Association this year might be classified under five general headings, namely: ordinations, missions, building improvements, organizational concerns and administration.

Four churches reported the ordination of "men of God." Balsam ordained three but did not give their names; Laurel Branch ordained Randolph Ray; New Hope and Old Savannah ordained a deacon each; Cashiers ordained James N. Madden for the ministry; while Scotts Creek ordained Roy Burnette, and Keith Dean was ordained by Wilkesdale.

Those churches licensing ministers were: Old Savannah, Kenneth Postell; Scotts Creek, Phillip Deitz, and Roy Burnette (later ordained); Wilmont, Lanny Nations and Johnny Ray Davis.

The only mission activity reported was by the Cashiers Church which built a church in Estancia, Brazil.

Improvement of the church facilities and grounds were made at Cullowhee where new carpeting was placed in the main hallway, the pastor's study and the library. The walls were refinished and painted in two Sunday school rooms, the pastor's study, the library and main floor hallway. Two planters were constructed and planted on the exterior. New Hope added carpet and new seats to the church. Unity enlarged its parking lot and erected a new sign. Zion Hill added two new Sunday school rooms.

The Cullowhee pastor, J.S. Hinton, motivated the committee system into action and involved these committees actively in church work and program planning.

New Hope placed their pastor on a full-time basis.

The following churches reported changes in pastors during the year: Buff Creek lost Delwin Richey; Dan Ward left Little Savannah and was replaced by Roy Burnette; Lovedale replaced J.C. Robinson with Joe Cocker; Lumberton lost John Banther but secured the leadership of Melvin Snyder; Mike Farner left Moses Creek; Rockdale lost Dillard Moore but filled the vacancy with Mike Farner; Jerry Laughter moved from Scotts Creek and was succeeded by Johnny Enloe.

These happenings, events and ministries show evidence of growth and improvements in the Tuckaseegee Baptist Association.

Respectively submitted,  
Annie Hoyle, Historian

### Missions Report

We are truly grateful for the way God has blessed us in mission work this year. Mission work has been carried on in our local campgrounds, at our lakes and at Hawthorn Heights.

We know that God will greatly bless the men and women from the Jackson County churches who went to West Virginia to build a sanctuary for the Wayside Baptist Chapel. Several churches worked to raise monies to buy a motorcycle for the team of Gail Cross to take to a pastor in Honduras. Many of the women who worked on this project were from our W.M.U.'s.

With answered prayer, we have been able to see our associational office building get under way. Since all things are possible with God, we ask each of you to pray with us that God will send us the man we need for our new director of missions.

Respectfully submitted,  
The Missions Committee

## Ordination Committee

The ordination committee met three times during the year at the request of the following churches:

On August 22, 1980 by request of Laurel Branch Baptist Church to examine Randolph Ray.

On January 13, 1981 by request of Balsam Baptist Church to examine Carroll Ensey, Tony McCall, and Billy Styles.

On March 2, 1981 by request of Scotts Creek Baptist Church to examine Roy Burnette.

These candidates for the gospel ministry were questioned as to their Christian experience, their call to the ministry, and their doctrinal beliefs.

After hearing from these brethren, and being satisfied as to their testimony, the committee was unanimous in recommending that their respective churches proceed with plans for their ordination.

Respectfully submitted,  
J.D. Wyatt, Chairman; Dan Ward,  
Delwin Richey, Pat Correll,  
Everett Wilson

## Stewardship

In the area of stewardship our last reporting year shows that of our 48 churches, eight have a goal of at least 10 percent to the Cooperative Program (CP); four reported a goal of three percent to associational missions, seven of our churches promote a giving emphasis, while 14 adopt budgets. The churches gave \$47,688.00 to the CP or 5.25 percent of our total receipts of \$907,832.00. This reflects the giving of 27 churches. Thirty-eight churches gave \$97,236.00 to other S.B.C. mission causes, just under 16 percent of the total receipts. This made a grand total of mission giving of \$144,924.00 or about 16 percent of the total receipts.

The annual pastor's stewardship banquet with Talmage Williams of the S.B.C. was very helpful, unfortunately only about 10 of our pastors availed themselves of this training.

In the coming year we have great challenges facing us, increased missions giving and actions at home, possibly in West Virginia, and the world, while at the same time building an associational building. All this in economically doubtful times. We are accountable as individual stewards before the Lord. As churches we are accountable before the Lord of the the Candlesticks, for the stewardship of our resources. Are we burying our talents or using them? As church leaders we need to be aware of the example of stewardship our churches are setting for our people. When we as churches only support special objects, without the sustaining tithe of our receipts to the Cooperative Program, we leave the impression to our people that the tithe is optional. We need to realize that there would not be any special offerings without the sustaining gifts of the CP to these ministries. If our churches fail to support missions while in building programs (on the local field or associationally) we communicate to our church members that are buying homes that the support of their local church is not required. We have the resources and the people here in Tuckaseegee Association to fulfill our obligation to God in winning our world to Christ. We must let loose of them and give ourselves to God. If we get our hearts right, in this matter of stewardship, first in the local church, then our stewardship on associational, state, and S.B.C. levels will follow. James said, "Our faith is evidenced and demonstrated in our works." If we call ourselves Southern Baptists, let's evidence it in our cooperative

giving through the Cooperative Program and our special offerings. The stakes are high, the cost is great, but the lost are lost for eternity. Let us not grow weary in well-doing.

Respectfully submitted,  
David M. Blackney

## Vacation Bible School 1981

All members of the 1981 associational V.B.S. team were able to attend the state training session in March at West Asheville Baptist Church. Those composing the team were: Ginger Albright, middle preschool; Louella Brown, older preschool; Annie Hoyle, younger children; Sandra James, middle children; Carolyn Kilby, older children; Larry Shuler, youth; Margaret Richmond, adult; Cherri Moses, mission V.B.S./ Backyard Bible Clubs; Edna Ginn, special education; and Linda Turrentine, general office.

Through our mini and general clinics this year, 25 different churches were represented and 13 different pastors attended. There was a total of 131 in combined attendance at the clinics - 37 at the mini-clinics and 94 at the general clinic - was made through the Baptist Bookstore consignment plan. A special thanks to those churches that participated in this effort. Also, thanks should go to those serving on the associational V.B.S. team, as much time was spent in training, and presenting at the clinics.

Preceding the general clinic was the Rev. Cloyes Starnes, missionary on furlough to Korea, who spoke and shared a movie of the evangelistic efforts in that country. This same evangelistic ideas was the North Carolina V.B.S. theme this year. Stressing the plan of salvation was to be emphasized in all departments. The Southern Baptist Convention national emphasis was the Cooperative Program. Churches were urged to keep missions in mind throughout their V.B.S. sessions.

I have seen much enthusiastic work through the V.B.S. effort taking place in our churches this year. Two Backyard Bible Clubs were being planned for the Canada area and one at the Sylva Park.

I thank God for the cooperativeness of the churches in our association and I give them praise for those souls won through V.B.S.

Let us bond together in greater numbers in 1982 to reach even more for Christ. In Him,

Respectfully submitted,  
Linda Turrentine, Director

## The Proposed Budget

1981 - 1982

The people of the Tuckaseegee Baptist Association have been richly blessed by God during the past year. God has heard and answered many prayers. The love of God reaches far beyond man's wisdom and understanding.

The budget we have proposed for this year has changed very little from last year. We prepared it with the prayers that God will send us a director of missions who will lead us in His ways.

We are thankful that God has led His people to support this cause. We are grateful for every church and every individual in this association. We also appreciate the leadership and love Brother Alvin Loiry. May God bless him as he goes to another area.

God has opened the door to enable us to have a new building for our work. Let us open the doors of our hearts and allow Him to use us to win the lost and to live always in His love and glory.

Respectfully submitted,  
Mike Moore, Chairman  
Lewis Keener, Wade Mills,  
Henry Hoyle, John Hyatt

### Proposed Budget 1981 - 1982

Budget Item	Budget 1980-81	1981-1982	Monthly Amount
<b>1. PERSONNEL</b>			
Director's Salary	\$ 7,800.00	\$ 7,800.00	\$ 650.00
Director's Auto Expense	3,000.00	3,000.00	250.00
Honorarium for Treasurer	125.00	150.00	12.50
Honorarium for Clerk	125.00	150.00	12.50
<b>2. PERSONNEL BENEFITS</b>			
Retirement	600.00	600.00	50.00
Housing for Director (includes utilities)	4,230.00	4,230.00	352.50
Insurance	1,480.00	1,480.00	123.33
<b>3. PROPERTIES</b>			
Office Rent	600.00	600.00	50.00
Telephone	600.00	600.00	50.00
Electricity	100.00	100.00	8.33
Office Equipment and Repairs	200.00	200.00	16.66
<b>4. PROMOTIONAL</b>			
Office Supplies	300.00	300.00	25.00
Postage	500.00	500.00	41.66
Conference and Conven- tion Expenses	600.00	600.00	50.00
Sunday School	75.00	75.00	6.25
Church Training	50.00	75.00	6.25
Youth Work	75.00	75.00	6.25
V.B.S.	125.00	50.00	12.50
Music	50.00	50.00	4.16
Honorarium for Speakers	50.00	50.00	4.16
<b>5. PROJECTS FOR PROGRESS</b>			
Training Associational Leaders	200.00	200.00	16.66
Associational Minutes	500.00	500.00	41.66
Associational Missions	250.00	250.00	20.83
Associational Missions			
<b>6. MISCELLANEOUS</b>	<u>175.00</u>	<u>175.00</u>	<u>14.58</u>
	\$21,810.00	\$21,910.00	\$ 1,825.83

Respectfully submitted,  
Mike Moore, Chairman  
Finance Committee

N.B. The above budget was approved and adopted for the associational year 1981-1982.

### Financial Statement

July 1, 1980 - June 30, 1981

#### RECEIPTS:

Balsam	\$ 200.00	Mount Pleasant	165.00
Balsam Grove	120.00	New Hope	450.00
Big Ridge	0.00	New Savannah	200.00
Black Mountain	0.00	Ochre Hill	900.00
Buff Creek	500.00	Old Savannah	240.00
Calvary	250.00	Pine Creek	0.00
Cashiers	600.00	Rockdale	300.00
Cullowhee	170.00	Scotts Creek	1,430.00
Deitz Memorial	90.00	Shoal Creek	1,200.00
Dicks Creek	120.00	Sols Creek	0.00
East Fork	150.00	Speedwell	70.00
East Sylva	600.00	Sylva, First	2,400.00
Fall Cliff	0.00	Tilley Creek	0.00
Greens Creek	1,060.12	Trout Creek	0.00
Hamburg	889.82	Tuckasegee	180.00
Hyatts Chapel	413.42	Unity	0.00
Jarrett Memorial	600.00	Webster	550.00
John's Creek	0.00	Wilkesdale	400.48
Laurel Branch	0.00	Wilmont	25.00
Little Savannah	110.00	Wolf Creek	0.00
Liberty	40.00	Yellow Mountain	10.00
Locust Field	130.24	Zion Hill	120.00
Long Branch	120.00	Subtotal	\$15,954.08
Lovedale	775.00	Baptist Convention	3,060.00
Lumberton	100.00		\$19,014.08
Moses Creek	275.00		

#### MISCELLANEOUS RECEIPTS:

Personal	\$ 100.00
V.B.S. Sales	73.49
V.B.S. Commission	
1980	155.16
1981	273.12
"M" Night offering	124.47
Seminary Extension	
Students	236.34
State Convention	112.50
	\$ 1,075.08

#### DESIGNATED RECEIPTS:

Building Fund	\$ 157.79
Minutes	441.25
	\$ 599.04
Total Receipts:	\$20,688.20

### Financial Statement

#### BUILDING FUND

July 1, 1980 - June 30, 1981

#### RECEIPTS:

Balsam	\$ 500.00	Calvary	200.00
Balsam Grove	200.00	Cullowhee	300.00
Buff Creek	1,463.00	Deitz Memorial	80.00

Dicks Creek	200.00	New Hope	85.00
East Fork	95.75	Ochre Hill	1,287.53
East Sylva	69.00	Old Savannah	500.00
Hyatts Chapel	500.00	Rockdale	500.00
Jarrett Memorial	561.50	Scotts Creek	100.00
Little Savannah	375.75	Shoal Creek	1,200.00
Liberty	25.00	Sylva, First	100.00
Long Branch	500.00	Webster	158.00
Moses Creek	260.00	Wilkesdale	282.17
Mount Pleasant	650.00	Subtotal	<u>\$10,692.67</u>

**MISCELLANEOUS RECEIPTS:**

Deacons and Pastors	319.50	Deacons Association	100.50
Individuals	130.70	Scotts Creek W.M.U. No. 1	50.00
Revivals	526.23	Webster W.M.U.	100.00
Revivals	1,698.53	Tuckaseegee Assoc. W.M.U.	129.83
Crusade	375.12	Total Receipts	<u>\$14,205.11</u>

**EXPENDITURES:**

Richard Wright (removal of old church building)	3,000.00
Register of Deeds	7.00
Wilson Insurance Agency	93.00
First Union Bank (tax)	1.95
James Herron (survey)	363.00
Total Expenditures	<u>3,649.95</u>

**SUMMARY:**

Balance, July 1, 1980	\$ 1,716.11
Deposits	<u>14,205.11</u>
To Account for	15,921.22
Expenditures	<u>3,649.95</u>
Balance, June 30, 1981	<u>\$12,456.27</u>

**Financial Statement**

July 1, 1980 - June 30, 1981

**EXPENDITURES:**

<b>I. PERSONNEL:</b>	
Director's Salary	\$ 7,650.00
Director's Auto Expense	2,899.97
Honorarium, Treasurer	125.00
Honorarium, Clerk	125.00
<b>II. PERSONNEL BENEFITS:</b>	
Director's Retirement	550.00
Director's Insurance	1,479.78
Director's Housing and Utilities	4,105.03
<b>III. PROPERTIES:</b>	
Office Rent	600.00
Office Telephone	476.89
Electricity	72.13
Office Equipment and Repairs	1.55

**IV. PROMOTIONAL:**

Office Supplies	147.17
Postage	335.06
Conference and Convention Expense	200.00
Sunday School	24.59
Church Training	47.44
Youth Work	0.00
V.B.S.	133.19
Music	0.00
Honorarium for Speaker	0.00

**V. PROJECTS FOR PROGRESS**

Training Associational Leaders	30.00
Associational Minutes	835.47*
Associational Missions	160.00

**VI. MISCELLANEOUS**

Crusade Ads	104.30
Seminary Extension	602.30**
Transferred to Building Fund	57.79
V.B.S. Materials	236.89***

TOTAL... \$21,041.78

\*Includes \$125.00 for clerk honorarium for 1979-80

\*\*Moneys received from students and state convention

\*\*\*Moneys received from churches for materials

**SUMMARY**

Balance July 1	\$ 1,934.22
Receipts	<u>20,688.20</u>
To Account for	22,622.42
Expenditures	<u>21,041.78</u>
Balance, June 30	<u>\$ 1,522.85</u>

Harry D. Vance, Treasurer



# Constitution

(Revisions: August 16, 1957; August 16, 1975; August 19, 1978; August 17, 1979; August 15, 1980)

## ARTICLE I — NAME

The name of the body shall be the Tuckaseegee Baptist Association.

## ARTICLE II — OBJECTIVES

The purpose of the association is to be a fellowship of churches on mission in our setting. The specific objectives of the association are as follows:

1. To promote harmony, understanding and spiritual power between the churches.
2. To afford and promote a larger fellowship of Christians in the work of Christ.
3. To provide such programs, projects and organizations as will strengthen the churches and assist them in achieving their goals and objectives.
4. To discover needs which cannot be met effectively by churches individually, and to coordinate the use of resources in meeting these needs.
5. To encourage support by every church for the mission causes of the association, the North Carolina Baptist Convention, and the Southern Baptist Convention.

## ARTICLE III — AUTHORITY

SECTION 1. The association shall have the power to elect and install its officers in whatever manner the body may deem expedient.

SECTION 2. The association shall have power to recommend measures of usefulness and guidance to our churches in matters of organization, ordinations and questions of doctrines and discipline.

SECTION 3. The association shall have no power to infringe upon the right of local churches as sovereign and independent bodies.

## ARTICLE IV — MEMBERSHIP

SECTION 1. The association shall be composed of regularly constituted Baptist churches in cooperating fellowship with the Southern Baptist Convention and following the teachings of the New Testament.

SECTION 2. The association shall be the sole judge of its membership and may receive or reject churches applying for membership therein at its pleasure. Churches applying for membership shall agree to come under the watch care of the association for one year. It is understood that during this period of watch care the church shall be entitled to all rights and privileges of the association except those of voting.

Applications for membership should be presented to the credentials committee of the association. Upon the recommendation of the credentials committee the church will automatically come under the watch care of the association for one year. During that year, the church shall be entitled to all rights and privileges of the association except that of voting. It is suggested that any church under watch care participate in the missions program of the association. At the end of the year the church may be voted in as a member of the association with full privileges by a two-thirds vote of the messengers present and voting at the regular meeting of the association, provided that the church submit an acceptable letter and at least one messenger be present at the meeting.

SECTION 3. The association may withdraw from any church which has become unscriptural in its doctrine or practices by a two-thirds majority vote of the messengers present and voting at the annual meeting. Such vote is to be taken by written ballot.

SECTION 4. Any church may withdraw from the association at its pleasure. Such action will be recognized by the association at the next annual meeting.

SECTION 5. It shall be the duty of each church to furnish the associational clerk, before each annual session, and annual letter, the forms provided by the associational clerk giving the information requested as is applicable to each church situation.

## ARTICLE V — MEETINGS

SECTION 1. The association should hold its annual sessions on Thursday and Friday preceding the third Sunday in August. Special meetings of the association may be called by the Executive Board provided two weeks written notice is given to the member churches.

SECTION 2. Each church shall be entitled to be represented at the annual meeting by four messengers. Churches with more than 100 members shall be entitled to an additional messenger for each additional 50 members or fraction thereof and not to exceed 10 messengers from any one church.

SECTION 3. In case of internal dissension in a church and two parties coming to the association, each claiming to represent the church, neither party shall be seated until the question is decided as to which party is in union with the association. The decision is to be made by a majority of the messengers present and voting.

## ARTICLE VI — OFFICERS

SECTION 1. General officers of the association shall be: Moderator, Vice-Moderator, Clerk, Assistant Clerk, Treasurer, Historian, Parliamentarian. Program leaders shall be Sunday School Director, Church Training Director, Church Music Director, Director of Deacons, Chairman of Evangelism Committee, Director of Continuing Education, Chairman of the Missions Committee, Director of Associational Missions, Trustees and such other officers as the association may desire to elect.

Associational representatives will be elected for the following institutions and agencies: (1) Truett Camp, (2) Baptist Children's Homes, (3) Baptist Hospital, (4) Homes for the Aging, (5) Baptist Literature, (*Biblical Recorder*) (6) Cooperative Program, other representatives (such as the American Bible Society, Annuity Board, Baptist Foundation, etc.) may be added as deemed appropriate and properly elected.

SECTION 2. With the exception of the director of associational missions and trustees, the terms of office for all officers of the association shall be for one year with the privilege of continuing re-election. The moderator and vice-moderator shall not be eligible for re-election but one year in succession. (1) The number of trustees shall be three. (2) The term of service should be for three years, with the term of only one expiring each year. In the first election of trustees the term of service for one should be three years, another two years, and the other one year. (3) Upon the expiration of term of service the trustee may or may not be re-elected for another term of three years.

Each term of office shall begin with the close of the annual session with the exception of the treasurer who will serve from October 1, through September 30 (the financial year).

SECTION 3. The director of associational missions shall be sought and recommended by the Executive Committee in a manner of its own choosing. Within 10 days after locating a nominee, the Executive Committee shall present the name of the director nominee to a called meeting of the association. If the annual meeting of the association is scheduled within 60 days, the presentation shall wait until that time.

The call shall be indefinite. The salary, allowance, vacation, etc. shall be as provided by the current budget or adjustments recommended by the Executive Commit-



tee in consultation with the finance committee.

Concerning termination of employment, the resignation shall be in writing and presented to the Executive Committee at least 30 days before it is to take place. The Executive Committee may terminate employment by giving 30 days notice in advance.

The Executive Committee shall give full supervision and guidance to the work of the director of missions in planning, promoting and financing his work.

#### ARTICLE VII — DUTIES OF OFFICERS

**SECTION 1.** The MODERATOR shall preside and maintain the order of all meetings of the association and Executive Committee. He shall serve as ex-officio member of all committees of the association.

He shall appoint the committee on committees and all other committees pertinent to the operation of the body not named by the committee on committees in its regular report.

**SECTION 2.** The VICE-MODERATOR shall assist the moderator and shall preside in the absence of, or at the pleasure of the moderator.

**SECTION 3.** The CLERK shall keep a complete and accurate record of all transactions; shall prepare a Book of Reports to be distributed to messengers at the beginning of each day's session of the annual meeting; and shall cause to be printed minutes concerning the records made.

The clerk shall mail to the clerk of each church in the association, blanks for the preparation of the church letter as soon as they are received from the state convention. This form is to be returned to the clerk of the association not later than two weeks prior to the meeting of the body.

**SECTION 4.** The TREASURER shall receive and dispense by the order of the Executive Committee or the association while in session, the money of the treasury and make a complete report to the association at each session.

**SECTION 5.** The HISTORIAN shall keep the records of the association up to date.

**SECTION 6.** The PARLIAMENTARIAN shall upon the request of the presiding officer of the body advise and assist the association with respect to all matters involving parliamentary procedure.

**SECTION 7.** The PROGRAM LEADERS AND THE INSTITUTIONAL AGENCY REPRESENTATIVES shall perform all duties customary to their titles and shall make a written report to the annual session of the association.

**SECTION 8.** THE DIRECTOR OF MISSIONS shall work closely with the associational committees, officers, and churches in such a way as to facilitate the meeting of the objectives of the association as set forth in Article II.

The director shall serve as ex officio member of all committees of the association. The director shall communicate with the state and Southern Convention such information as shall be mutually helpful and needful.

**SECTION 9.** TRUSTEES have no authority except by direction of the association, and not personally bound by their signatures but, are to be the legal signees for the association.

Trustees represent the association in legal matters.

Trustees act on behalf of the association in acquisition and disposal of associational property.

They sign all deeds of conveyance, execute all notes, bonds or mortgages, intervene in all suits, by authority of the association.

All persons dealing with the trustees, as associational officers, may rely upon any written resolution duly adopted by the association or Executive Committee, directing and authorizing the trustees to act in its behalf and certified by the association moderator and clerk.

#### ARTICLE VIII — RULES OF ORDER

The business of the association shall be conducted according to Robert's Parliamentary Practice or in a manner not contrary thereto.

#### ARTICLE IX — QUORUM

The annual associational quorum shall be not less than 25 percent of the member churches represented.

#### ARTICLE X — THE EXECUTIVE COMMITTEE

**SECTION 1.** The EXECUTIVE COMMITTEE shall be composed of the general officers and program leaders elected by the association and the pastor and one member from each church in the association. No pastor, by virtue of his being an associational officer or program leader shall be disqualified as a member of the Executive Committee, from representing the church or churches he may be serving in the association. Twelve of these members shall constitute a quorum.

**SECTION 2.** It shall be the duty of the Executive Committee to act for the association on matters arising when the association is not in session and to make a report of all work to the next session of the association. This body shall meet at a time and place designated by the moderator on Monday following the first Sunday of each quarter except for the July quarter which shall meet on the last Monday of the month of July. Special meetings of the Executive Committee may be called by the moderator with a one week notice to the churches.

**SECTION 3.** All vacancies occurring on committees or among elected officers shall be filled by the Executive Committee.

**SECTION 4.** In the event that a vacancy occurs with the trustees, the Executive Committee should fill such a vacancy for the remainder of the term.

#### ARTICLE XI — ASSOCIATIONAL COMMITTEES

**SECTION 1.** The association shall have such standing committees as may be deemed necessary to promote efficiently the work of the Master in our midst. The term of office for all committee members shall be for one year except where specifically stated otherwise.

**SECTION 2.** THE COMMITTEE ON COMMITTEES shall be appointed by the moderator at the first Executive Board meeting of the associational year. There shall be three members.

It shall be the duty of this committee to nominate at the annual meeting the following committees: Nominating, Credentials, Place and Preacher, Memorials, Finance, Constitution, Ordination, Evangelism, Missions.

**SECTION 3.** The NOMINATING COMMITTEE shall be composed of five members. To this group the directors of Sunday School, Church Training, Women's Missionary Union, Brotherhood and Music Ministry will be added.

It shall be the duty of this committee to nominate the officers, program leaders and institutional/agency representatives. These nominees shall be notified in writing not less than one month prior to presenting of their names at the annual session.

**SECTION 4.** THE ORDER OF BUSINESS COMMITTEE, composed of three members, shall plan the annual program of the association and present it to the Executive Committee at its July meeting.

**SECTION 5.** THE CREDENTIALS COMMITTEE shall be composed of three pastors and two laymen. It shall examine applications of churches seeking admission into the association in keeping with Article IV, and make recommendations to the association.

It shall counsel with churches that are out of harmony or fellowship with the association.

SECTION 6. THE PLACE AND PREACHER COMMITTEE shall be composed of three members. The duties of this committee shall be to recommend the place or places for the following annual meeting and to recommend the preacher and alternate to deliver the annual sermon for the following year.

SECTION 7. THE RESOLUTIONS COMMITTEE shall be composed of three members appointed by the moderator at the first session of the annual session. It shall be the duty of the committee to present suitable resolutions at the annual associational meeting.

SECTION 8. THE MEMORIAL COMMITTEE shall be composed of three members. It shall be the duty of this committee to bring a report to the annual meeting of those listed by the member churches as deceased since the last annual meeting and shall lead in a memorial service in their memory.

SECTION 9. THE FINANCE COMMITTEE shall be composed of six members including the treasurer of the association. This committee shall: (a) Present a budget to the association for the following year; (b) Devise plans for raising the funds for the association budget; (c) Audit the finances and financial records of the association twice annually and anytime there is a change of treasurer or at the direction of the association or the Executive Committee; (d) Report all audits to the annual association meeting.

SECTION 10. THE CONSTITUTION COMMITTEE shall be composed of three members and shall perform all duties specified in Article XIV.

SECTION 11. THE ORDINATION COMMITTEE shall be composed of five designated pastors and all other pastors who desire to sit with the committee.

a. The committee serves in an advisory capacity only and serves at the request of the church from which one of the members is seeking ordination.

b. The committee should examine such candidates for the ministry as come before it as to their call and fitness for the gospel ministry and make such recommendations to the church as they feel led.

c. The committee should assist in arranging the proper service of ordination when such assistance is requested.

d. The Executive Committee should be informed regularly of the work of the committee.

e. Each church desiring to ordain a candidate is urged to consult with the committee, and shall give two weeks notice in which the committee is to do its work.

SECTION 12. THE EVANGELISM COMMITTEE. The duties of the committee shall be to direct and promote a perpetual program and spirit of evangelism in the association. It shall arrange and direct all associational wide evangelistic activities.

SECTION 13. THE MISSIONS COMMITTEE shall be composed of six members, two named each year and each serving for a three-year term. Committee members are eligible to be re-elected for one additional term of office in succession. The associational brotherhood director and Woman's Missionary Union director are to serve as ex-officio members along with the director of missions and the moderator.

The duties of the missions committee shall be: to plan, conduct and evaluate the mission program of the association through: (a) Helping churches commit themselves to being ON MISSION in their setting; (b) Provide and interpret information on mission needs to the churches of the association; (c) To survey the mission needs to be found within the association; (d) Assist churches in doing mission work; (e) Conduct the kinds of mission work that individual churches cannot successfully conduct.

#### ARTICLE XII — THE ASSOCIATIONAL COUNCIL

The ASSOCIATIONAL COUNCIL shall be composed of the director of missions, the moderator, the vice-moderator, the program leaders: Sunday school, church training, Woman's Missionary Union, brotherhood, the chairman of deacons, the

chairman of the evangelism committee, the chairman of the missions committee, the chairman of the finance committee. The director of missions is to serve as chairman and a secretary shall be elected from the group.

The purpose of the council is to coordinate the planning of the various programs of the association, to develop an associational calendar, and to give mutual support to the various organizations and program units in carrying out their assignments.

The council shall meet quarterly.

#### ARTICLE XIII — THE ASSOCIATIONAL PASTOR'S CONFERENCE

The associational Pastor's Conference provides regular meetings for the Baptist ministers of the association. The purpose of the conference is for fellowship and mutual support, for doctrinal and professional discussion and for promotion of church, associational and other denominational programs. The conference is not an administrative or executive body.

#### ARTICLE XIV — AMENDMENTS

The constitution may be amended at any annual meeting of the association by a two-thirds majority of the messengers present and voting, provided the amendment has been presented to the constitutional committee at least 10 days prior to the annual meeting and presented to the association in printed form on the first day of the annual meeting to be voted on the second day.

## Memorials

"The Seasons of Life"



### BALSAM

Mrs. Francis Coward  
Mr. Lester Reece

### BUFF CREEK

Mr. Lee Bryson  
Mr. Walter Cogdill  
Mr. Sam Morris

### CULLOWHEE

Dr. Hugh Matthews,  
Deacon  
Mrs. Walter Shelton

### DEITZ MEMORIAL

Mr. Clinton Buchanan,  
Deacon

Mrs. J.D. Buchanan  
Mrs. Sally Deitz

### DICKS CREEK

Mrs. Dora King  
Mr. Fred Robinson

### EAST SYLVA

Mrs. Beulah Bryson

### FALL CLIFF

Mrs. Ethel Wheatley

### GREENS CREEK

Mr. Edd Buchanan  
Mrs. Tina M. Sutton

### HAMBURG

Mr. Clarence Lusk  
Mr. Dallas Mills

### HYATTS CHAPEL

Mrs. Sara Galloway  
Mrs. Roxie Streedar  
Mrs. Dovie Summerell

### JARRETT MEMORIAL

Mr. Claude Jacobs  
Mr. Tom Keever  
Mrs. F.I. Watson

### JOHNS CREEK

Mrs. Ellen Brown  
Mr. Jim Daves  
Mrs. Bertha Queen Prince  
Mr. Howard Wood

### LAUREL BRANCH

Mrs. Junita Bumgarner  
Mr. Grant Clawson,  
Deacon

Mr. Nute Mace

### LOCUST FIELD

Mr. Bill Gregory  
Mrs. Minnie Sutton  
Mrs. Ollie Sutton

### LONG BRANCH

Mr. Clinton Bryant,  
Deacon  
Mr. Bill Estes

Mr. Charles Lillard  
Mr. Herbert Rogers

### LOVEDALE

Miss Karen Sherrill

### MOUNT PLEASANT

Mr. Sam Mills

### NEW HOPE

Mrs. Nora Harris  
Mrs. Lilly Parker

### NEW SAVANNAH

Mr. Guy Buchanan  
Mrs. Corcie Tatham

### OCHRE HILL

Mr. Coy Buchanan  
Mr. Burger Ensley

### OLD SAVANNAH

Mrs. Sallie Buchanan  
Mr. Bob Cope  
Mr. Ralph Hall  
Mr. Johnny O'Dear

### ROCKDALE

Mrs. Carolyn Revis  
Middleton

### SCOTTS CREEK

Mr. Edwin Erwin  
Mrs. Marie Harris  
Master Neal Sanderson  
Mr. Albert Sellers  
Miss Becky Sellers  
Miss Bessie Snyder

### SHOAL CREEK

Mr. Robert Bradburn  
Mrs. Fannie Sitton  
Mr. Bob Young

### SYLVA, FIRST

Mrs. Ida Hampton  
Mr. Theodore Moore  
Mr. Roscoe Poteet  
Mrs. Tom Wilson

### TUCKASEIGEE

Mr. E.M. Chastain

### UNITY

Mr. Wayne Rhinehart

### WEBSTER

Mrs. Mamie Allmon  
Mrs. Nell Fullbright

### WILMONT

Mr. Walter Bradley

### YELLOW MOUNTAIN

Mrs. Lola Fox  
Mrs. Connie Stewart  
Mrs. Ollie Stewart

### ZION HILL

Mr. John Cope  
Mr. Robert Jones  
Mrs. Edith Hyatt  
Mrs. Kathlene Johnson

## Messengers

**BALSAM:** James Beck, Willard Beck, Ernest Bryson, Stella Bryson, G.B. Coward, Ben Nicholson, Hardin Nicholson

**BALSAM GROVE:** None listed

**BIG RIDGE:** Did not report

**BLACK MOUNTAIN:** Glen Blanton, Lonnie Dills, Dean Stephens

**BUFF CREEK:** Annie Blanton, Lewis Blanton, Betty Dotson, Gail Melton, Birdelle Terrell, Allie Snyder

**CALVARY:** Emma Bryson, Daisy James, Mr. and Mrs. Jewell Thompson

**CASHIERS:** Trenton Connelly, Joyce Connelly, Joe Graf, Edna Graf, Tom Madden

**CULLOWHEE:** Louella Brown, J.S. Hinson, Pearl Mashburn, John and Bessie Moses, Percy and Gladys Parker, Lucille Painter

**DEITZ MEMORIAL:** Bill Buchanan, Margie Buchanan, Kay Clemmons, Cicero Cowan, Ila Ray Deitz

**DICKS CREEK:** Annie M. Brown, Beulah Brown, Beverly Brown, Homer Brown, Ina Turpin, Jarvis Turpin

**EAST FORK:** Alice Cabe, Carlin Cabe, Estella Fassett, John Fassett

**EAST SYLVA:** James Bivens, Maxine Bivens, Rev. Charles Dean, Lee Dillard, Mrs. Lee Dillard, Bert Moses, Velma Plemmons

**FALL CLIFF:** None listed

**GREENS CREEK:** Ethel Allison, Allan Garner, Mattie Green, Margie Green, Mrs. J.D. Wyatt

**HAMBURG:** Mr. and Mrs. Charles Ashley, Mr. and Mrs. Ivan Ashley, Mr. and Mrs. Buster Lanning, Sam Pressley

**HYATTS CHAPEL:** Paul Carden, Sharon Carden, Frankie Blanton, Ed. Moore, Dave Ward

**JARRETT MEMORIAL:** Audrey Buchanan, Margie Messer, Vince Sisti, Vincent L. Sisti, Mildred Sutton, Perry Sutton

**JOHNS CREEK:** Larry Lovedahl, Sue Lovedahl, Eugene Maynor, Hobnette Maynor

**LAUREL BRANCH:** None listed

**LIBERTY:** Did not report

**LITTLE SAVANNAH:** Roy Burnette, William Lewis, Harry Moses

**LOCUST FIELD:** Mr. and Mrs. James Lupo, Mrs. Doris Melton

**LONG BRANCH:** Ben Cabe, Georgia Ensley, Oscar Dalton

**LOVEDALE:** Olga Barker, Joe Coker, Ralph England, Flora Haskett, Hilda Hoyle, Hazel Monteith, Freda Queen

**LUMBERTON:** Mrs. Felix Hooper, Ray Houston, Margaret Potts

**MOSES CREEK:** None listed

**MT. PLEASANT:** None listed

**NEW HOPE:** Cecil Dillard, Lee Ensley, Betty Ensley, Ollie Frizell, Mildred Harris, Earl Holden, Doris Phillips, Carlton Phillips, Mildred Harris

**NEW SAVANNAH:** None listed

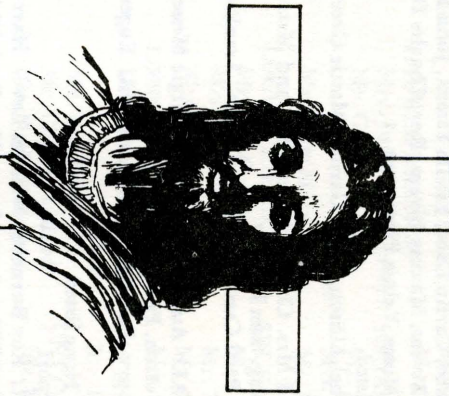
**OCHRE HILL:** Delos Blanton, Linda Carroll, Jack Cope, Lewis Keener, Jean Keener

**OLD SAVANNAH:** Irene Bishop, Mr. and Mrs. Grover Cabe, Mr. and Mrs. Cope, Mr. and Mrs. Woodrow Frady, Mr. Jim Moore, Eddie Stillwell, Mrs. Eddie Stillwell

**PINE CREEK:** None listed

**ROCKDALE:** Helen Brooks, Naomi Brooks, Walt Brooks, Felix Jones, Janet Jones

SCOTT'S CREEK: Ollie Ashe, Johnny Enloe, Sherri Enloe, Ella Moore, Johnny Watson, Rhoda Watson  
 SHOAL CREEK: Louise Edwards, Harry Griffin, Sarah Griffin, Winford Hughes, Elsie Benzel - alternate  
 SOLS CREEK: Did not report  
 SPEDWELL: Elaine Hasket, Ida Mae Wilkes  
 SYLVA, FIRST: None listed  
 TILLEY CREEK: None listed  
 TROUT CREEK: Did not report  
 TUCKASEGEE: Raye Hall, Ruth Smith  
 UNITY: None listed  
 WEBSTER: None listed  
 WILKESDALE: Evelyn Barnes, Jimmy Barnes, Dan Dean, Mrs. Dan Dean, R.D. Sherson  
 WILMONT: H.A. Green, Jane Greene, Daris McMillen  
 WOLF CREEK: Did not report  
 YELLOW MOUNTAIN: Leland Cooper, Eldon Jamison, Alice Woods  
 ZION HILL: John Anderson, Mable Anderson, Forman Bradley, Joe Bishop, Pearl Bishop, Gladys Hooper, Wesley Hooper, Alonao Woodard, Cecile Woodard



## Historical Table

YEAR	SESSION	PLACE	DATE	MODERATOR	CLERK	DIRECTOR	PREACHER
1970	141	Tuckasegee	Aug. 14	Robert Blanton	Charles Dean		Bill Sorrells
		Buff Creek	Aug. 15				Ben Cook
1971	142	Zion Hill	Aug. 12	Robert Blanton	Charles Dean	W. Middleton	M. Clayton
		Cullowhee	Aug. 13				Frank Reed
1972	143	Balsam	Aug. 17	Robert Blanton	Annie Hoyle	W. Middleton	Harold Anderson
		Webster	Aug. 18				Charles Dean
1973	144	Cashiers	Aug. 16	John Hyatt	Annie Hoyle	W. Middleton	Jack Holcombe
		Lovedale	Aug. 17				Ray McCall
1974	145	Locust Field	Aug. 14	John Hyatt	Annie Hoyle	W. Middleton	L. Jackson
		Greens Creek	Aug. 15				Harold Anderson
1975	146	Liberty	Aug. 14	Robert Blanton	Annie Hoyle	W. Middleton	C.H. Greene
		New Hope	Aug. 15				H. Nicholson
1976	147	Hamburg	Aug. 12	Robert Blanton	Annie Hoyle		Luther Osment
		Long Branch					J.D. Wyatt
1977	148	Shoal Creek	Aug. 16	Wesley Hooper	Annie Hoyle	C.O. Vance	Douglas McFadin
		Black Mountain	Aug. 19			Alvin Loiry, Jr.	Alvin Loiry, Jr.
1978	149	Buff Creek	Aug. 17	Wesley Hooper	Annie Hoyle	Alvin Loiry, Jr.	Harry Vance
		Yellow Mountain	Aug. 18				Cecil Saunders
1979	150	Balsam Grove	Aug. 16	C.J. Robinson	Annie Hoyle	Alvin Loiry, Jr.	Bill Rogers
		Pine Creek	Aug. 17				
1980	151	East Sylva	Aug. 14	C.J. Robinson	Annie Hoyle	Alvin Loiry, Jr.	Jerry Laughter
		Sylva, First	Aug. 15				John Bunn
1981	152	Ochre Hill	Aug. 13	Ray McCall	Annie Hoyle	Alvin Loiry, Jr.	Patrick Correll
		Hyatts Chapel	Aug. 14				David Blackney
1982	153	East Fork	Aug. 12	Ray McCall	Annie Hoyle	Trenton Connelly	
		Jarrett Memorial	Aug. 13			George Tuthill	

## Representatives on Association Executive Board

BALSAM: Willard Beck; Rev. Hardin Nicholson  
BALSAM GROVE: None listed  
BIG RIDGE: Did not report  
BLACK MOUNTAIN: None reported  
BUFF CREEK: Jack Henry  
CALVARY: None listed  
CASHIERS: None listed  
CULLOWHEE: Jack Hinson; Annie Hoyle  
DEITZ MEMORIAL: Bill Buchanan  
DICKS CREEK: Rev. Bill Stiles; Bruce Stiles  
EAST FORK: Rev. Eddie Deitz  
EAST SYLVA: Rev. Charles Dean  
FALL CLIFF: None listed  
GREENS CREEK: Rev. J.D. Wyatt; Allan Garner  
HAMBURG: None listed  
HYATTS CHAPEL: None listed  
JARRETT MEMORIAL: Rev. George Tuthill; Mike Deitz  
JOHNS CREEK: None listed  
LAUREL BRANCH: None listed  
LIBERTY: Did not report  
LITTLE SAVANNAH: Rev. Roy Burnette; William Lewis; Harry Moses  
LOCUST FIELD: None listed  
LONG BRANCH: Rev. Ben Cabe  
LOVEDALE: Rev. Joe Coker, Ralph England  
LUMBERTON: None listed  
MOSES CREEK: None listed  
MT. PLEASANT: Rev. Cecil Saunders; Allen Crawford  
NEW HOPE: Rev. Earl Holden; Lee Ensley  
NEW SAVANNAH: Rev. Charles Ginn; Mildred Buchanan; Ethel Collins  
OCHRE HILL: Rev. Patrick Correll; Lewis Keener  
OLD SAVANNAH: Rev. Eddie Stillwell; Grover Cabe  
PINE CREEK: None listed  
ROCKDALE: Rev. Mike Farmer; Virgil Brooks  
SCOTTS CREEK: Rev. Johnny Enloe; Charles Moses; Darrell Ensley  
SHOAL CREEK: Rev. David Blackney; John Hyatt  
SOLS CREEK: Did not report  
SPEEDWELL: Rev. Roger Stewman; Jesse Flake  
SYLVA, FIRST: Dr. John Bunn; Gene Middleton; Floyd Bateman  
TILLEY CREEK: None listed  
TROUT CREEK: Did not report  
TUCKASEGEE: Rev. John Reid  
UNITY: None listed  
WEBSTER: Rev. Ray McCall  
WILKESDALE: Rev. Max Lindsey  
WILMONT: Rev. Hazen Pangle  
WOLF CREEK: Did not report  
YELLOW MOUNTAIN: Rev. Edwin Bryson; Eldon Jamison  
ZION HILL: Rev. Wesley Hooper; John Anderson

## Ministers Licensed During the Year

BALSAM: Kent Loudermilk, Waynesville  
SCOTTS CREEK: Phillip Deitz, Rt. 1, Sylva, NC 28779  
Roy Burnette, Rt. 2 Box 313-B, Sylva, NC 28779  
WILMONT: Johnny Ray Davis, Rt. 2, Whittier, NC 28789  
Lanny Nations, Rt. 2, Whittier, NC 28789  
OLD SAVANNAH: Kenneth Postell

## Ministers Ordained During the Year

BALSAM: Carroll Ensley, Balsam, NC 28707  
Tony McCall, Waynesville, NC 28787  
Billy Stiles, Waynesville, NC 28787  
CASHIERS: James N. Madden, Box 432, Cashiers, NC 28717  
LAUREL BRANCH: Randolph Ray, Whittier, NC 28789  
SCOTTS CREEK: Roy Burnette, Rt. 2 Box 313-B, Sylva, NC 28779

## Ordained Ministers

BALSAM: Carroll Ensley, Balsam, NC 28707  
Tony McCall, Rt. 1, Waynesville, NC 28787  
EAST FORK: Grover Cabe, Rt. 2, Sylva, NC 28779  
David Bowers, 5 Church St., Sylva, NC 28779  
EAST SYLVA: William Chapman, Rt. 2 Box 138-K, Whittier, NC 28789  
Harry Vance, Rt. 3 Box 299, Sylva, NC 28779  
LOCUST FIELD: Frank Brooks, Rt. 2, Sylva, NC 28779  
Hazen Pangle, Box 99, Dillsboro, NC 28725  
LOVEDALE: Robert M. Snyder, Rt. 3 Box 129-E, Sylva, NC 28779  
MT. PLEASANT: Clarence Austin, Rt. 1, Sylva, NC 28779  
Jimmy Cogdill, Sylva, NC 28779  
Robert Dean, Candler, NC  
NEW HOPE: Robert Christopher, Rt. 3, Sylva, NC 28779  
Raymond Shuler, Rt. 3, Sylva, NC 28779  
OCHRE HILL: Glen Blanton, Rt. 1, Sylva, NC 28779  
Robert Blanton, Rt. 1, Sylva, NC 28779  
OLD SAVANNAH: Adam Brooks, Rt. 2, Sylva, NC 28779  
Don Franks, Rt. 2, Sylva, NC 28779  
ROCKDALE: Ralph Bradley, Rt. 2, Whittier, NC 28789  
SCOTTS CREEK: Wayne Caldwell, Sylva, NC 28779  
Wilton Johnson, P.O. Box 548, Sylva, NC 28779  
Keith Monteith, P.O. Box 154, Jerusalem  
Dan Ward, Sylva, NC 28779  
SPEEDWELL: Grady Cline, Rt. 66, Cullowhee, NC 28723  
B.F. Pressley, Rt. 66, Cullowhee, NC 28723  
SYLVA, FIRST: Harold Anderson, P.O. Box 386, Sylva, NC 28779  
Joe David Fore, Rt. 3, Sylva, NC 28779  
Charles Ginn, Old Sillsboro Rd., Sylva, NC 28779  
Walter Middleton, 12 Woodlawn St., Sylva, NC 28779  
Luther Osment, 22 Cowan St., Sylva, NC 28779  
Hal Salisbury, P.O. Box 196, Cullowhee, NC 28723  
Ronald Waldrop, Rt. 1 Box 110-D, Sylva, NC 28779  
WEBSTER: Virgil Cook, Webster, NC 28788  
ZION HILL: Joe Bishop, Rt. 2, Sylva, NC 28779

## Licensed Ministers

**BALSAM:** Kent Loudermilk, Waynesville, NC 28787  
**EAST SYLVA:** Clifford Cagle, 143 Asheville Rd., Sylva, NC 28779  
**MT. PLEASANT:** Noel Cagle, Rt. 1, Sylva, NC 28779  
**NEW HOPE:** Tommy Ensley, Sylva, NC 28779  
**OCHRE HILL:** Wilburn Norman, Rt. 1, Sylva, NC 28779  
**SCOTTS CREEK:** Phillip Deitz, Rt. 1, Sylva, NC 28779  
**SYLVA, FIRST:** Larry Rogers, Box 961, Sylva, NC 28779  
**WILMONT:** Lanny Nations, Rt. 2, Whittier, NC 28789  
 Johnny Ray Davis, Rt. 2, Whittier, NC 28789  
**ZION HILL:** Davis Hooper, Rt. 2, Sylva, NC 28779



## Church Directory

The following pages for the Church Directory of Tuckasegee Baptist Association is compiled of ALL the lists of names and addresses in statistical tables A through I.

## List of Pastors

**Balsam** ..... Hardin Nicholson, P.O. Box 235, Balsam, NC 28707  
**Balsam Grove** ..... Abe Brooks, Rt. 2 Box 140, Whittier, NC 28789  
**Big Ridge**  
**Black Mountain** ..... Glen Blanton, Rt. 1 Box 914, Sylva, NC 28779  
**Buff Creek**  
**Calvary** ..... Lanny Nations, Rt. 2 Box 104, Whittier, NC 28789  
**Cashiers** ..... Trenton Connelly, P.O. Box 336, Cashiers, NC 28717  
**Cullowhee** ..... J.S. Hinson, P.O. Box 37, Cullowhee, NC 28723  
**Deitz Memorial** ..... Robert Blanton, Rt. 1, Sylva, NC 28779  
**Dicks Creek** ..... Billy K. Stiles, Rt. 1 Box 150, Waynesville, NC 28787  
**East Fork** ..... Eddie Deitz, Rt. 2 Box 183, Sylva, NC 28779  
**East Sylva** ..... Charles Dean, P.O. Box 516, Sylva, NC 28779  
**Fall Cliff** ..... James Cogdill, N. Fork Rd., Sylva, NC 28779  
**Greens Creek** ..... J.D. Wyatt, Rt. 2, Sylva, NC 28779  
**Hamburg** ..... Robert Christopher, Rt. 3, Sylva, NC 28779  
**Hyatts Chapel** ..... Paul Carden, Rt. 1, Sylva, NC 28779  
**Jarrett Memorial** ..... George Tuthill, P.O. Box 40, Dillsboro, NC 28725  
**Johns Creek** ..... Carl Smith, Box 572, Sylva, NC 28779  
**Laurel Branch** ..... Delos Parris, 38 Love Av., Sylva, NC 28779  
**Liberty** ..... Joe Smith, Hospital Dr., Sylva, NC 28779  
**Little Savannah** ..... Roy Burnette, Rt. 1 Box 5342, Sylva, NC 28779  
**Locust Field** ..... Charles Carnes, Gen. Del., Dillsboro, NC 28725  
**Long Branch** ..... Ben Cabe, Box 44, Sylva, NC 28779  
**Lovedale** ..... Joe Coker, Rt. 3 Box 492-A, Sylva, NC 28779  
**Lumberton** ..... Melvin Snyder, Rt. 3 Box 129-E, Sylva, NC 28779  
**Moses Creek**  
**Mount Pleasant** ..... Cecil Saunders  
**New Hope** ..... Earl Holden, Rt. 1 Box 152, Sylva, NC 28779  
**New Savannah** ..... Charles Ginn, 124 Old Dillsboro Rd., Sylva, NC 28779  
**Ochre Hill** ..... Patrick Correll, Rt. 1 Box 905, Sylva, NC 28779  
**Old Savannah** ..... Eddie Stillwell, Rt. 2, Sylva, NC 28779  
**Pine Creek** ..... Everett Wilson, Rt. 66, Cullowhee, NC 28723  
**Rockdale** ..... Mike Farmer, Rt. 1 Box 244, Sylva, NC 28779  
**Scotts Creek** ..... Johnny Enloe, Rt. 1 Box 345, Sylva, NC 28779  
**Shoal Creek** ..... David Blackney, Rt. 1, Whittier, NC 28789  
**Sols Creek**  
**Speedwell** ..... Roger Stewman, Rt. 2 Box 318, Sylva, NC 28779  
**Sylva, First** ..... John T. Bunn, 8 Lloyd Av., Sylva, NC 28779  
**Tilley Creek** ..... Will Webb, Rt. 66, Cullowhee, NC 28723  
**Trout Creek**  
**Tuckasegee** ..... John Reid, Tuckasegee, NC 28783  
**Unity** ..... Frank Brooks, Sylva, NC 28779  
**Webster** ..... Ray McCall, P.O. Box 34, Webster, NC 28788  
**Wilkesdale** ..... Max Lindsey, Bryson City, NC 28713  
**Wilmont** ..... Hazen Pangle, Box 99, Dillsboro, NC 28725  
**Wolf Creek**  
**Yellow Mountain** ..... Edwin Bryson, Rt. 66, Cullowhee, NC 28723  
**Zion Hill** ..... Wesley Hooper, Rt. 2, Sylva, NC 28779

## List of Sunday School Directors

Balsam	Alvin Cogdill, Balsam, NC	28707
Balsam Grove	Wendell Ray, Rt. 67, Cullowhee, NC	28723
Big Ridge		
Black Mountain	Carroll Broome, Rt. 67 Box 57, Cullowhee, NC	28723
Buff Creek	Joe Jones, Rt. 3, Sylva, NC	28779
Calvary	Eddie Bradley, P.O. Box 327, Dillsboro, NC	28725
Cashiers	Charles Hooper, Gen. Del., Cashiers, NC	28717
Cullowhee	Annie K. Hoyle, P.O. Box 446, Cullowhee, NC	28723
Deitz Memorial	Gary Buchanan, Rt. 2, Sylva, NC	28779
Dicks Creek	Bruce Stiles, Rt. 2 Box 161-A, Whittier, NC	28789
East Fork	Carlin Cabe, Rt. 2, Sylva, NC	28779
East Sylva	Bert Moses, Cope Creek Rd., Sylva, NC	28779
Fall Cliff	James Farmer, Rt. 3, Sylva, NC	28779
Greens Creek	Allan Garner, Rt. 2, Sylva, NC	28779
Hamburg	Marvin Jennings, Glenville, NC	28736
Hyatts Chapel	Mike Moore, Rt. 1, Whittier, NC	28789
Jarrett Memorial	Vince Sisti, Box 24, Dillsboro, NC	28725
Johns Creek	Larry Lovedahl, Rt. 67, Cullowhee, NC	28723
Laurel Branch	Roy Queen, Rt. 3, Sylva, NC	28779
Liberty		
Little Savannah	William Lewis, Rt. 1, Sylva, NC	28779
Locust Field	Buddy Brooks, Box 1892, Sylva, NC	28779
Long Branch	David Mull, Sylva, NC	28779
Lovedale	Vernon Haskett, Rt. 3, Sylva, NC	28779
Lumberton	Fred Houston, Rt. 67 Box 96-A, Cullowhee, NC	28723
Moses Creek	Earl Stephens, Rt. 1, Sylva, NC	28779
Mount Pleasant	Larry Henry, Balsam, NC	28707
New Hope	Haven Ensley, Little Savannah, Sylva, NC	28779
New Savannah	Ralph Angel, Rt. 2, Sylva, NC	28779
Ochre Hill	Eddie Pittman, Rt. 1, Sylva, NC	28779
Old Savannah	Jim Mason, P.O. Box 181, Webster, NC	28788
Pine Creek	Ray Crawford, Rt. 66, Cullowhee, NC	28723
Rockdale	Kenneth Miller, Rt. 2, Whittier, NC	28789
Scotts Creek	Denver Monteith, Rt. 3 Box 345, Sylva, NC	28779
Shoal Creek	John S. Hyatt, Rt. 1, Whittier, NC	28789
Sols Creek		
Speedwell	Lenn Wilkes, Rt. 66 Box 65, Cullowhee, NC	28723
Sylva, First	Linda Turrentine, 485-F, E. Main St., Sylva, NC	28779
Tilley Creek	Hartwell Patterson, Rt. 66 Box 79, Cullowhee, NC	28723
Trout Creek		
Tuckasegee	Jim Balcerech, Tuckasegge, NC	28783
Unity	Earl Mathis	
Webster	Ernest Penland, Webster, NC	28788
Wilkesdale	Keith Dean, Sunrise Park, Sylva, NC	28779
Wilmont	Joe McDowell, Rt. 2, Whittier, NC	28789
Wolf Creek		
Yellow Mountain	Tommy Holden, Rt. 66, Cullowhee, NC	28723
Zion Hill	Lester Wilson, Rt. 2, Sylva, NC	28779

## List of Church Training Directors

Balsam	
Balsam Grove	
Big Ridge	
Black Mountain	
Buff Creek	
Calvary	Marshall Bradley, Rt. 2, Sylva, NC 28779
Cashiers	Randall Moss, Gen. Del., Cashiers, NC 28717
Cullowhee	
Deitz Memorial	
Dicks Creek	
East Fork	Thelma Buchanan, Rt. 2, Sylva, NC 28779
East Sylva	
Fall Cliff	
Greens Creek	Mrs. J.D. Wyatt, Rt. 2, Sylva, NC 28779
Hamburg	Leonard Pressley, Glenville, NC 28736
Hyatts Chapel	
Jarrett Memorial	Ray Buchanan, Box 215, Dillsboro, NC 28725
Johns Creek	
Laurel Branch	
Little Savannah	Evelyn Frizzell, Rt. 3, Sylva, NC 28779
Locust Field	
Liberty	
Long Branch	
Lovedale	Mrs. Flora Haskett, 12 Broad St., Sylva, NC 28779
Lumberton	
Moses Creek	
Mount Pleasant	
New Hope	Henford Norman, Rt. 3 Box 372-A, Sylva, NC 28779
New Savannah	
Ochre Hill	Carl Scott, Rt. 1, Sylva, NC 28779
Old Savannah	Jim Moore, Rt. 2, Sylva, NC 28779
Pine Creek	
Rockdale	
Scotts Creek	Mrs. Frankie Harris, 12 Harris Cir., Sylva, NC 28779
Shoal Creek	Winfred Hughes, Rt. 1, Whittier, NC 28789
Sols Creek	
Speedwell	
Sylva, First	Betty Blanton, P.O. Box 1041, Sylva, NC 28779
Tilley Creek	
Trout Creek	
Tuckasegee	
Unity	
Webster	Norman Parris, Rt. 3, Sylva, NC 28779
Wilkesdale	Christine Painter, Painter St., Sylva, NC 28779
Wilmont	
Wolf Creek	
Yellow Mountain	
Zion Hill	John Anderson, Rt. 2, Sylva, NC 28779

## List of Music Directors

Balsam ..... James M. Beck, P.O. Box, Hazelwood, NC 28738  
 Balsam Grove ..... Clifford Parker, 48 Scotts Cir. Rd., Sylva, NC 28779  
 Big Ridge  
 Black Mountain  
 Buff Creek ..... Steve Lakey, Rt. 1 Box 92-A, Sylva, NC 28779  
 Calvary ..... Miss Linda Janes, Rt. 2 Box 69, Sylva, NC 28779  
 Cashiers ..... Ray Fowler, Gen. Del., Cashiers, NC 28717  
 Cullowhee ..... Mrs. Sara Hinson, P.O. Box 37, Cullowhee, NC 28723  
 Deitz Memorial ..... Grover Deitz, Rt. 2, Sylva, NC 28779  
 Dicks Creek  
 East Fork ..... Coy Deitz, Rt. 2 Box 183, Sylva, NC 28779  
 East Sylva ..... Vernon Jamison, P.O. Box 1, Sylva, NC 28779  
 Fall Cliff ..... Edwin McFalls, Rt. 66, Cullowhee, NC 28723  
 Greens Creek ..... Mrs. Aileen Green, Rt. 2, Sylva, NC 28779  
 Hamburg  
 Hyatts Chapel ..... Steve Gunter, Rt. 1, Whittier, NC 28789  
 Jarrett Memorial ..... Mike Parris, Dillsboro, NC 28725  
 Johns Creek ..... Billy Bradley, Rt. 67, Cullowhee, NC 28723  
 Laurel Branch  
 Liberty  
 Little Savannah ..... Otis Watts, Rt. 3, Sylva, NC 28779  
 Locust Field  
 Long Branch ..... Curtis Allison, Rt. 3, Sylva, NC 28779  
 Lovedale ..... Lyle Hall, Rt. 3, Sylva, NC 28779  
 Lumberton  
 Moses Creek ..... Arthur Stephens, Rt. 3 Box 250, Sylva, NC 28779  
 Mt. Pleasant ..... Larry Henry, Balsam, NC 28707  
 New Hope ..... Bob Ensley, 9 Plum St., Sylva, NC 28779  
 New Savannah  
 Ochre Hill ..... Larry Shular, Olde Asheville Hwy., Sylva, NC 28779  
 Old Savannah  
 Pine Creek  
 Rockdale ..... Mrs. Cindy Brooks, Rt. 2 Box 14-D, Whittier, NC 28789  
 Scotts Creek ..... Mike Nichols, P.O. Box 506, Sylva, NC 28779  
 Shoal Creek ..... Mrs. Esther Cole, Rt. 1, Whittier, NC 28789  
 Sols Creek  
 Speedwell ..... Weaver Fox, Rt. 66, Cullowhee, NC 28723  
 Sylva, First ..... James Fisher, Box 2134, Cullowhee, NC 28723  
 Tilley Creek  
 Trout Creek ..... Miss Cheri Moses, Tuckasegee, NC 28783  
 Tuckasegee ..... Miss Cheri Moses, Tuckasegee, NC 28783  
 Unity ..... Bill Dills, Rt. 67, Cullowhee, NC 28723  
 Webster  
 Wilkesdale ..... Jimmy Barnes, 5 Henson St., Sylva, NC 28779  
 Wilmont  
 Wolf Creek  
 Yellow Mountain ..... Dall Stewart, Rt. 66, Cullowhee, NC 28723  
 Zion Hill ..... Darrell Woodard, Rt. 2 Box 257, Sylva, NC 28779

## List of W.M.U. Directors

Balsam  
 Balsam Grove  
 Big Ridge  
 Black Mountain  
 Buff Creek ..... Mrs. Eloise Shuler, Rt. 1, Sylva, NC 28779  
 Calvary ..... Mrs. Daisy James, Rt. 2 Box 69, Sylva, NC 28779  
 Cashiers ..... Mrs. Joe Graf, Whiteside Cove Rd., Highlands, NC  
 Cullowhee ..... Miss Louella Brown, Rt. 67 Box 97-B, Cullowhee, NC 28723  
 Deitz Memorial  
 Dicks Creek  
 East Fork  
 East Sylva  
 Fall Cliff  
 Greens Creek ..... Miss Joyce Green, Rt. 2 Sylva, NC 28779  
 Hamburg ..... Ms. Katherine Ashley, Glenville, NC 28736  
 Hyatts Chapel  
 Jarrett Memorial ..... Mrs. Betty Parris, Dillsboro, NC 28725  
 Johns Creek  
 Laurel Branch  
 Liberty  
 Little Savannah ..... Mrs. Doris Crowe, Rt. 3, Sylva, NC 28779  
 Locust Field ..... Mrs. Ruth Brooks, Box 1892, Sylva, NC 28779  
 Long Branch ..... Miss Kathryn Sutton, Box 83, Sylva, NC 28779  
 Lovedale ..... Miss Hilda Hoyle, Box 851, Sylva, NC 28779  
 Lumberton  
 Moses Creek ..... Mrs. Joyce Stephens, Rt. 67 Box 103, Cullowhee, NC 28723  
 Mount Pleasant  
 New Hope ..... Mrs. Thelmalene Ensley, 9 Plum St., Sylva, NC 28779  
 New Savannah  
 Ochre Hill ..... Mrs. Emma Lou Wilkes, Rt. 1 Box, Sylva, NC 28779  
 Old Savannah ..... Mrs. Vera Cope, Rt. 2, Sylva, NC 28779  
 Pine Creek  
 Rockdale  
 Scotts Creek ..... Mrs. Lois Monteith, Rt. 1 Box 74, Sylva, NC 28779  
 Shoal Creek ..... Mrs. Esther Cole, Rt. 1, Whittier, NC 28789  
 Sols Creek  
 Speedwell  
 Sylva, First ..... Mrs. Sandra James, Rt. 1 Box 59, Sylva, NC 28779  
 Tilley Creek  
 Trout Creek  
 Tuckasegee  
 Unity  
 Webster ..... Mrs. Barbara Donnelly, Webster, NC 28788  
 Wilkesdale ..... Mrs. Ellaree Stewart, 1 Wilkesdale St., Sylva, NC 28779  
 Wilmont  
 Yellow Mountain ..... Mrs. Gladys Ridley, Rt. 2, Cashiers, NC 28717  
 Zion Hill



## List of Brotherhood Directors

Balsam  
 Balsam Grove  
 Big Ridge  
 Black Mountain  
 Buff Creek  
 Calvary  
 Cashiers ..... Dean Madden, Rt. 70 Box 1, Cashiers, NC 28717  
 Cullowhee  
 Deitz Memorial  
 Dicks Creek  
 East Fork  
 East Sylva  
 Fall Cliff  
 Greens Creek  
 Hamburg  
 Hyatts Chapel ..... Mike Moore, Rt. 1, Whittier, NC 28789  
 Jarrett Memorial  
 Johns Creek  
 Laurel Branch  
 Liberty  
 Little Savannah  
 Locust Field  
 Long Branch ..... David Mull, Sylva, NC 28779  
 Lovedale  
 Lumberton  
 Moses Creek  
 Mount Pleasant  
 New Hope  
 New Savannah  
 Ochre Hill ..... Larry Shuler, Old Asheville Hwy., Sylva, NC 28779  
 Old Savannah ..... Gary Bolden, Rt. 2, Sylva, NC 28779  
 Pine Creek  
 Rockdale  
 Scotts Creek ..... Joe Hamilton, P.O. Box 726, Sylva, NC 28779  
 Shoals Creek  
 Sols Creek  
 Speedwell  
 Sylva, First ..... R. Leo James, Rt. 1 Box 59, Whittier, NC 28789  
 Tilley Creek  
 Trout Creek  
 Tuckasegee  
 Unity  
 Webster  
 Wilkesdale  
 Wilmont  
 Wolf Creek  
 Yellow Mountain  
 Zion Hill

## List of Treasurers

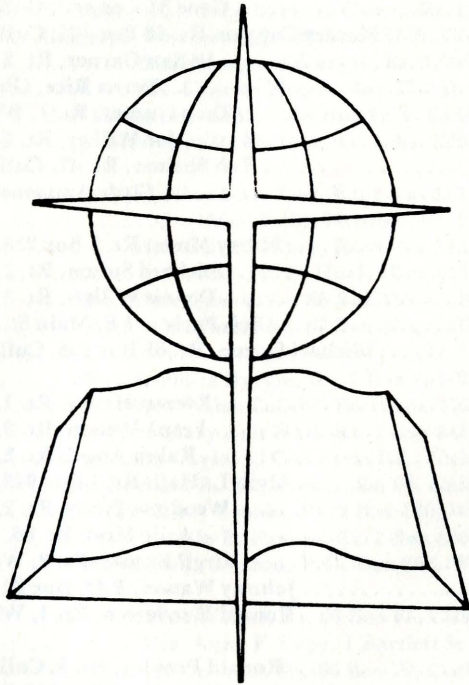
Balsam ..... James M. Beck, P.O. Box 351, Hazelwood, NC 28738  
 Balsam Grove ..... Mrs. Jean Hooper, P.O. Box 32, Sylva, NC 28779  
 Big Ridge  
 Black Mountain ..... Lebern Dills, Rt. 67 Box 47-A, Cullowhee, NC 28723  
 Buff Creek ..... Mrs. Shirley Beasley, 56 Lee St., Sylva, NC 28779  
 Calvary ..... Marshall Bradley, Rt. 2 Box 144, Sylva, NC 28779  
 Cashiers ..... Mrs. Carol Hunter, Gen. Del., Cashiers, NC 28717  
 Cullowhee ..... Mrs. Annie Hoyle, P.O. Box 46, Cullowhee, NC 28723  
 Deitz Memorial ..... Ronnie Buchanan, Rt. 2 Box 163, Sylva, NC 28779  
 Dicks Creek ..... Mrs. Ina Turpin, Rt. 2 Box 163, Whittier, NC 28789  
 East Fork ..... Mrs. Lillian Green, Rt. 2, Sylva, NC 28779  
 East Sylva ..... Astor Plemmons, Jr., 12 Falls Cir., Sylva, NC 28779  
 Fall Cliff ..... Mrs. Christine Childers, Rt. 66 Box 125, Cullowhee, NC 28723  
 Greens Creek ..... Mrs. Aileen Green, Rt. 2, Sylva, NC 28779  
 Hamburg ..... Mrs. Bernice Rice, Glenville, NC 28736  
 Hyatts Chapel ..... Mrs. Margaret Gunter, Rt. 1, Whittier, NC 29789  
 Jarrett Memorial ..... Vincent L. Sisti, Dillsboro, NC 28725  
 Johns Creek ..... Mrs. Hobnetta Maynor, Rt. 67, Cullowhee, NC 28723  
 Laurel Branch ..... Mrs. Linda Farmer, Rt. 3 Box 229, Sylva, NC 28779  
 Liberty  
 Little Savannah ..... Mrs. Carolyn Lewis, Rt. 3 Box 243-M, Sylva, NC 28779  
 Locust Field ..... Mrs. Virginia Pangle, Box 99, Dillsboro, NC 28725  
 Long Branch ..... Mrs. Clara Wilkey, Rt. 3 Box 575, Sylva, NC 28779  
 Lovedale ..... Mrs. Thelma Painter, 22 Jones St., Sylva, NC 28779  
 Lumberton ..... Mrs. Felix Hooper, Rt. 67 Box 97, Cullowhee, NC 28723  
 Moses Creek ..... Mrs. Martha Stephens, 53 Sunrise Park, Sylva, NC 28779  
 Mount Pleasant ..... Robert Henry, Rt. 1, Sylva, NC 28779  
 New Hope ..... Mrs. Carolyn Cabe, Rt. 3, Sylva, NC 28779  
 New Savannah ..... Mrs. Wiley Collins, Rt. 2 Box 310, Sylva, NC 28779  
 Ochre Hill ..... Wade Mills, Rt. 1, Sylva, NC 28779  
 Old Savannah ..... Mrs. Lydia Morgan, Rt. 2, Sylva, NC 28779  
 Pine Creek ..... Mrs. Barbara R. Henderson, Rt. 66, Cullowhee, NC 28723  
 Rockdale ..... Mrs. Jennie Miller, Rt. 2, Whittier, NC 28789  
 Scotts Creek ..... Major Allison, 71 E. Main St., Sylva, NC 28779  
 Shoal Creek ..... Jim Ridgeway, Rt. 1, Whittier, NC 28789  
 Sols Creek  
 Speedwell ..... Mrs. Gladys German, P.O. Box 2602, Cullowhee, NC 28723  
 Sylva, First ..... Mrs. Betty Blanton, P.O. Box 1041, Sylva, NC 28779  
 Tilley Creek ..... Mrs. Geraldene Ashe, Rt. 66, Cullowhee, NC 28723  
 Trout Creek  
 Tuckasegee ..... Mrs. Ann Hollifield, Tuckasegee, NC 28783  
 Unity ..... Mrs. Margaret Watson, Rt. 67 Box 37, Cullowhee, NC 28723  
 Webster ..... Mrs. Frances Penland, P.O. Box 96, Webster, NC 28788  
 Wilkesdale ..... Mrs. Evelyn Barnes, 5 Henson St., Sylva, NC 28779  
 Wilmont ..... Mrs. Daris McMillen, Rt. 2, Whittier, NC 28789  
 Wolf Creek  
 Yellow Mountain ..... Mac Stewart, Rt. 66, Cullowhee, NC 28723  
 Zion Hill ..... Alonzo Woodard, Rt. 2 Box 257, Sylva, NC 28779

## List of Church Clerks

Balsam ..... Mrs. Stella Bryson, P.O. Box 194, Balsam, NC 28707  
 Balsam Grove ..... Mrs. Ora Blanche Cook, Rt. 67 Box 194, Cullowhee, NC 28723  
 Big Ridge  
 Black Mountain ..... Mrs. Betty Littrell, Rt. 67 Box 45-A, Cullowhee, NC 28723  
 Buff Creek ..... Mrs. Gail Melton, Rt. 1 Box 360, Sylva, NC 28779  
 Calvary ..... Mrs. Linda James, Rt. 2 Box 69, Sylva, NC 28779  
 Cashiers ..... Mrs. Dean Madden, Rt. 70 Box 1, Cashiers, NC 28717  
 Cullowhee ..... Mrs. Frances Conley, Rt. 3, Sylva, NC 28779  
 Deitz Memorial ..... Mrs. Kathryn Buchanan, Rt. 2 Box 163-A, Sylva, NC 28779  
 Dicks Creek ..... Mrs. Ina Turpin, Rt. 2 Box 163, Whittier, NC 28789  
 East Fork ..... Mrs. Coy Deitz, Rt. 2 Box 183, Sylva, NC 28779  
 East Sylva ..... Mrs. Maxine Bivens, P.O. Box 1911, Sylva, NC 28779  
 Fall Cliff ..... Mrs. Britta Lee Coggins, Rt. 66 Box 107, Cullowhee, NC 28723  
 Greens Creek ..... Mrs. Barbara Green, Rt. 2, Sylva, NC 28779  
 Hamburg ..... Mr. Cameron Breedlove, Rt. 63 Box 167-A, Glenville, NC 28736  
 Hyatts Chapel ..... Mrs. Margaret Gunter, Rt. 1, Whittier, NC 28789  
 Jarrett Memorial ..... Mrs. Charles Messer, Box 172, Dillsboro, NC 28725  
 Johns Creek ..... Mrs. Marie Lovedahl, P.O. Box 2229, Cullowhee, NC 28723  
 Laurel Branch ..... Mrs. Aquilla Farmer, Rt. 3 Box 229, Sylva, NC 28779  
 Liberty  
 Little Savannah ..... Mrs. Nina Crawford, Rt. 3 Box 241, Sylva, NC 28779  
 Locust Field ..... Mrs. Edith Hensley, Rt. 2, Sylva, NC 28779  
 Long Branch ..... Mrs. Clara Wilkey, Rt. 3 Box 575, Sylva, NC 28779  
 Lovedale ..... Miss Hilda Hoyle, Box 851, Sylva, NC 28779  
 Lumberton ..... Mrs. Joyce Queen, Rt. 68 Box 155, Cullowhee, NC 28723  
 Moses Creek ..... Arthur Stephens, Rt. 67 Box 103, Cullowhee, NC 28723  
 Mount Pleasant ..... Jake Parris, Jr., Rt. 1, Sylva, NC 28779  
 New Hope ..... Mrs. Barbara Bryson, Rt. 3 Box 300-B, Sylva, NC 28779  
 New Savannah ..... Mrs. Wiley Collins, Rt. 2 Box 310, Sylva, NC 28779  
 Ochre Hill ..... Mrs. Mary Ann Hall, Rt. 1 Box 943, Sylva, NC 28779  
 Old Savannah ..... Mrs. Ruby Cagle, 10 Cox Farm Rd., Cullowhee, NC 28723  
 Pine Creek ..... Mrs. Barbara R. Henderson, Rt. 66, Cullowhee, NC 28723  
 Rockdale ..... Mrs. Cindy Brooks, Rt. 2 Box 140, Whittier, NC 28789  
 Scotts Creek ..... Mrs. Ila B. Parker, Rt. 1 Box 138, Sylva, NC 28779  
 Shoal Creek ..... Miss Glenda Denton, P.O. Box 262, Whittier, NC 28789  
 Sols Creek  
 Speedwell ..... Mrs. Ida Mae Wilkes, Rt. 66 Box 65, Cullowhee, NC 28723  
 Sylva, First ..... Mrs. Anne F. Cabe, 1 Bartlett St., Sylva, NC 28779  
 Tilley Creek ..... Don Ashe, Rt. 66 Box 79, Cullowhee, NC 28723  
 Trout Creek  
 Tuckasegee ..... Mrs. Ruth Smith, Rt. 68 Box 281, Cullowhee, NC 28723  
 Unity ..... Mrs. Margaret Watson, Rt. 67 Box 37, Cullowhee, NC 28723  
 Webster ..... Ernest Penland, P.O. Box 6, Webster, NC 28788  
 Wilkesdale ..... Mrs. Iva Lee Daves, 21 Sylva Hghts., Sylva, NC 28779  
 Wilmont ..... Mrs. Daris McMillen, Rt. 2, Whittier, NC 28789  
 Wolf Creek  
 Yellow Mountain ..... Mrs. Alice Woods, Rt. 2, Cashiers, NC 28717  
 Zion Hill ..... Mrs. Cecile Woodard, Rt. 2 Box 257, Sylva, NC 28779

## List of Chairmen of Deacons

Balsam ..... Willard Beck, Rt. 1, Sylva, NC 28779  
 Balsam Grove ..... Lonnie Morgan, Rt. 67 Box 212, Cullowhee, NC 28723  
 Big Ridge  
 Black Mountain ..... Lonnie Dills, Rt. 67 Box 47, Cullowhee, NC 28723  
 Buff Creek  
 Calvary ..... Allen Bradley, Rt. 2 Box 144, Sylva, NC 28779  
 Cashiers ..... Tom Madden, Rt. 70 Box 1, Cashiers, NC 28717  
 Cullowhee ..... Robert Crawford, P.O. Box, Cullowhee, NC 28723  
 Deitz Memorial ..... Cicero Cowan, Rt. 3, Sylva, NC 28779  
 Dicks Creek ..... Bruce Stiles, Rt. 2 Box 161-A, Whittier, NC 28789  
 East Fork ..... Coy Deitz, Rt. 2, Sylva, NC 28779  
 East Sylva ..... Gene McConnell, Cullowhee, NC 28723  
 Fall Cliff ..... Manley Coggins, Rt. 66 Box 105, Cullowhee, NC 28723  
 Greens Creek ..... Allan Garner, Rt. 2, Sylva, NC 28779  
 Hamburg ..... Verna Rice, Glenville, NC 28736  
 Hyatts Chapel ..... Troy Gunter, Rt. 1, Whittier, NC 28789  
 Jarrett Memorial ..... Joe Wilkey, Rt. 3, Sylva, NC 28779  
 Johns Creek ..... Rob Shelton, Rt. 67, Cullowhee, NC 28723  
 Laurel Branch ..... Clyde Ammons, Sylva, NC 28779  
 Liberty  
 Little Savannah ..... Harry Moses, Rt. 3 Box 238, Sylva, NC 28779  
 Locust Field ..... Richard Sutton, Rt. 2, Sylva, NC 28779  
 Long Branch ..... Dennis Wilkey, Rt. 3, Sylva, NC 28779  
 Lovedale ..... Bob Parker, 1 E. Main St., Sylva, NC 28779  
 Lumberton ..... Michael Queen, Rt. 68 Box 155, Cullowhee, NC 28723  
 Moses Creek  
 Mount Pleasant ..... Everett Henry, Rt. 1, Sylva, NC 28779  
 New Hope ..... Frank Wilson, Rt. 3, Sylva, NC 28779  
 New Savannah ..... Ralph Angel, Rt. 2, Sylva, NC 28779  
 Ochre Hill ..... Alvin L. Hall, Rt. 1 Box 943, Sylva, NC 28779  
 Old Savannah ..... Woodrow Frady, Rt. 2, Sylva, NC 28779  
 Pine Creek ..... Arlie Moss, Rt. 66, Cullowhee, NC 28723  
 Rockdale ..... Virgil Brooks, Rt. 2, Whittier, NC 28789  
 Scotts Creek ..... Johnny Watson, P.O. Box 22, Sylva, NC 28779  
 Shoal Creek ..... Ronald Henderson, Rt. 1, Whittier, NC 28789  
 Sols Creek  
 Speedwell ..... Ronald Pressley, Rt. 6, Cullowhee, NC 28723  
 Sylva, First ..... Dean Kool, Rt. 2 Box 316-F, Sylva, NC 28779  
 Tilley Creek ..... Don Ashe, Rt. 66 Box 79, Cullowhee, NC 28723  
 Trout Creek  
 Tuckasegee ..... Chris Burrel, Tuckasegee, NC 28783  
 Unity  
 Webster  
 Wilkesdale ..... Dan Dean, Sunrise Park, Sylva, NC 28779  
 Wilmont ..... H.A. Greene, Rt. 2, Whittier, NC 28789  
 Wolf Creek  
 Yellow Mountain ..... Leland Cooper, Rt. 66, Cullowhee, NC 28723  
 Zion Hill ..... Lester Wilson, Rt. 2, Sylva, NC 28779



**The Tuckasegee Baptist Association  
1981 Minute Book  
is concluded with the following  
Statistical Tables  
for your further information and  
reference.**

<b>Table A - Church Membership</b> .....	<b>46</b>
<b>Table B - Sunday School</b> .....	<b>47</b>
<b>Table C - Church Training</b> .....	<b>48</b>
<b>Table D - Church Music</b> .....	<b>49</b>
<b>Table E - Woman's Missionary Union</b> .....	<b>50</b>
<b>Table F - Brotherhood</b> .....	<b>51</b>
<b>Table G - Total Receipts, Expenditures, Stewardship</b> .....	<b>52</b>
<b>Table H - Mission Expenditures</b> .....	<b>53</b>
<b>Table I - Special Information</b> .....	<b>54</b>

**TABLE A  
CHURCH MEMBERSHIP  
AND  
OTHER INFORMATION  
YEAR ENDING  
June 30, 1981**

CHURCHES	County	Year organized as a church	Location	Services held twice on Sunday?		Total Baptisms	Other additions (by letter, statement, etc.)	Members lost (by letter, death, statement, etc.)	Present resident members	Present nonresident members	Grand total present members	No. members received from non-Baptist Churches	No. members lost to non-Baptist Churches	Value of pastor's home if owned by the church	Value of church property including pastor's home	Total church debt at end of this associational year
				Y	N											
				3	4											
BALSAM	Jackson	1907	1	Y	0	5	2	208	149	370	0	0	45000	166000	4047	
BALSAM GROVE	Jackson	1875	1	N	0	0	0	100	1	101	0	0	0	75000	0	
BIG RIDGE	Jackson															
BLACK MOUNTAIN	Jackson	1919	1	Y	1	3	5	123	5	128	0	0	0	75000	432	
BUFF CREEK	Jackson	1905	1	Y	1	5	10	200	32	232	0	0	65000	210000	0	
CALVARY	Jackson	1949	1	Y	1	1	0	78	25	103	0	0	0	40000	0	
CASHIERS	Jackson	1929	3	Y	7	3	7	195	79	274	2	0	75000	325000	0	
CULLOWHEE	Jackson	1829	3	Y	7	15	6	379	10	385	1	0	80000	400000	15000	
DEITZ MEMORIAL	Jackson	1956	1	Y	0	2	4	60	30	90	0	0	0	0	0	
DICKS CREEK	Jackson	1903	1	Y	1	5	6	65	60	125	0	0	0	40000	0	
EAST FORK	Jackson	1882	1	Y	11	6	2	75	52	127	0	0	0	0	0	
EAST SYLVA	Jackson	1921	3	Y	10	21	14	545	83	628	0	0	40000	500000	0	
FALL CLIFF	Jackson	1951	1	Y	0	0	3	60	9	69	0	0	0	40000	0	
GREENS CREEK	Jackson	1921	2	Y	1	0	4	122	52	174	0	0	27000	85000	0	
HAMBURG	Jackson	1849	3	Y	4	14	150	50	200	200	0	0	50000	70000	0	
HYATTS CHAPEL	Jackson	1916	1	Y	1	4	5	32	55	87	0	0	0	5000	0	
JARRETT MEMORIAL	Jackson	1888	2	Y	0	2	11	132	89	221	0	0	45000	155000	0	
JOHNS CREEK	Jackson	1859	1	Y	3	0	5	80	119	199	0	0	0	50000	0	
LAUREL BRANCH	Jackson	1954	6	Y	0	7	47	0	0	47	0	0	0	0	0	
LIBERTY	Jackson															
LITTLE SAVANNAH	Jackson	1914	1	Y	10	6	9	128	14	142	0	0	0	26000	0	
LOCUST FIELD	Jackson	1895	1	Y	8	2	7	92	63	155	0	0	0	75000	0	
LONG BRANCH	Jackson	1934	3	Y	9	15	8	114	13	143	3	0	0	40000	0	
LOVEDALE	Jackson	1919	1	Y	0	7	3	222	170	392	0	0	35000	190000	0	
LUMBERTON	Jackson	1928	1	Y	3	1	1	26	18	44	0	0	0	0	0	
MOSES CREEK	Jackson	1919	1	Y	7	0	35	46	6	52	0	0	0	40000	5000	
MOUNT PLEASANT	Jackson	1852	1	Y	6	3	4	195	201	396	0	0	35000	80000	7499	
NEW HOPE	Jackson	1955	1	Y	8	12	6	333	104	437	0	2	0	200000	0	
NEW SAVANNAH	Jackson	1906	1	Y	0	0	2	26	5	31	0	0	0	60000	0	
OCHRE HILL	Jackson	1890	1	Y	26	6	5	225	122	347	1	0	60000	275000	0	
OLD SAVANNAH	Jackson	1835	1	Y	12	1	10	241	126	367	0	0	0	215000	0	
PINE CREEK	Jackson	1945	1	Y	8	0	4	83	35	118	0	0	0	100000	0	
ROCKDALE	Jackson	1947	1	Y	5	0	10	85	58	143	0	0	0	75000	0	
SCOTTS CREEK	Jackson	1830	1	Y	18	12	20	544	54	598	1	2	55000	652500	0	
SHOAL CREEK	Jackson	1828	1	Y	4	7	7	126	37	163	0	0	42500	224993	4500	
SOLS CREEK	Jackson															
SPEEDWELL	Jackson	1902	1	Y	9	6	2	112	115	227	1	0	0	5000	0	
SYLVA, FIRST	Jackson	1888	3	Y	12	28	22	632	120	752	3	2	45000	750000	16690	
TILLEY CREEK	Jackson	1952	1	Y	0	0	3	36	0	36	0	0	0	30000	0	
TROUT CREEK	Jackson															
TUCKASEGEE	Jackson	1836	1	Y	1	3	4	136	90	226	0	0	60000	160000	0	
UNITY	Jackson	1956	1	Y	2	17	5	120	32	152	0	0	0	75000	0	
WEBSTER	Jackson	1884	1	Y	1	1	2	0	0	255	0	0	80000	180000	0	
WILKESDALE	Jackson	1931	3	Y	7	2	3	36	40	96	0	0	0	50000	0	
WILMONT	Jackson	1893	1	Y	0	2	1	125	0	125	0	0	0	13000	0	
WOLF CREEK	Jackson															
YELLOW MOUNTAIN	Jackson	1878	1	Y	0	5	13	238	81	319	0	0	17000	35000	0	
ZION HILL	Jackson	1900	1	Y	5	1	3	205	95	300	0	0	0	0	0	

**TABLE B  
SUNDAY SCHOOL  
YEAR ENDING  
June 30, 1981**

Associational Sunday School Director  
Roy Burnette  
Sylva, NC 28779

CHURCHES	Cradle Roll enrollment (Birth to 2 years)	Preschool enrollment (Birth through 5 years)	Children enrollment (6-11 years or grades 1-6)	Youth enrollment (12-17 years or grades 7-12)	Young Adult enrollment - Single (18-29 years or H.S. graduation through 29 years)	Young Adult enrollment - married (18-29 years or H.S. graduation through 29 years)	Adult enrollment (30-59 years)	Senior Adult enrollment (60 and over)	Adults Aways enrollment	Homebound enrollment	General officers enrollment	Enrollment of missions(s) of church	Total ongoing Sunday School enrollment	Average weekly Sunday School attendance	Number of Bible Study groups	Bible Study group enrollment	Total enrolled in Bible Study	Church V. B. S. enrollment	Missions V. B. S. enrollment	Total V. B. S. enrollment
BALSAM	6	7	15	14	12	30	25	30	0	0	7	0	146	130	0	0	146	148	0	148
BALSAM GROVE	0	3	5	7	4	6	25	15	0	0	0	0	65	60	0	0	65	40	0	40
BIG RIDGE	0	14	8	10	4	12	54	17	10	4	11	0	144	75	2	0	144	48	0	48
BLACK MOUNTAIN	3	13	13	14	0	34	19	32	0	2	0	0	130	87	0	0	130	98	0	98
BUFF CREEK	0	13	8	6	6	14	24	13	0	7	0	0	84	35	0	0	84	40	0	40
CALVARY	2	5	21	18	8	0	42	31	0	0	2	0	129	101	0	0	129	94	0	94
CASHIERS	3	2	24	18	25	0	30	35	0	0	2	0	137	50	1	10	10	42	0	42
CULLOWHEE	2	1	1	1	4	0	14	10	0	4	0	0	35	30	1	0	35	0	0	0
DEITZ MEMORIAL	0	7	4	2	0	10	6	11	0	0	3	0	46	28	0	0	46	74	0	74
DICKS CREEK	0	3	14	10	3	46	22	15	0	0	8	0	79	54	0	79	0	42	0	42
EAST FORK	0	37	63	18	2	177	26	0	0	10	0	412	180	0	0	0	412	127	0	127
EAST SYLVA	0	3	5	5	0	3	20	10	0	0	0	0	48	40	1	0	48	0	0	0
FALL CLIFF	0	4	11	5	0	11	19	12	0	0	3	0	65	36	0	0	65	31	0	31
GREENS CREEK	1	6	15	13	1	0	33	15	0	0	3	0	87	86	0	0	87	53	0	53
HAMBURG	0	5	12	4	1	14	14	29	0	0	0	0	79	60	0	0	79	39	0	39
HYATTS CHAPEL	0	5	10	5	10	6	14	10	0	0	2	0	67	35	0	0	67	47	0	47
JARRETT MEMORIAL	0	0	4	10	0	13	10	20	0	0	3	0	60	60	1	0	30	34	0	34
JOHNS CREEK													39	39	0	0	0	0	0	0
LAUREL BRANCH																				
LIBERTY																				
LITTLE SAVANNAH	0	11	16	12	4	10	36	11	0	0	6	0	100	47	1	25	125	57	0	57
LOCUST FIELD	0	10	4	8	10	18	16	2	0	8	7	0	83	57	0	0	83	70	0	70
LONG BRANCH	0	8	28	14	4	12	40	15	0	2	11	0	134	92	0	0	134	63	0	63
LOVEDALE	0	10	30	20	4	19	49	16	0	6	2	0	176	107	0	0	176	43	0	43
LUMBERTON	3	3	4	0	2	8	8	15	0	0	0	0	43	40	1	0	43	0	0	0
MOSES CREEK	0	2	8	9	2	4	10	11	0	0	0	0	46	38	1	0	46	46	0	46
MOUNT PLEASANT	0	10	11	6	7	9	7	14	0	0	0	0	64	64	0	0	64	71	0	71
NEW HOPE	0	18	33	16	16	27	48	19	0	0	0	0	177	115	4	35	212	155	0	155
NEW SAVANNAH	0	1	0	4	2	2	2	79	5	0	3	0	26	0	0	0	26	0	0	0
OCHRE HILL	0	18	28	22	15	36	32	41	0	2	25	219	121	0	0	0	121	80	0	80
OLD SAVANNAH	0	0	10	17	9															

**TABLE C**  
**CHURCH TRAINING**  
 YEAR ENDING  
 June 30, 1981  
 Associational Church  
 Training Director  
 Davis Hooper  
 Rt. 2, Sylva, NC 28779

CHURCHES	74 Preschool enrollment (5 years and under - not in school)	75 Children enrollment (6-11 years or grades 1-6)	76 Youth enrollment (12-17 years or grades 7-12)	77 Adult enrollment (18 and over)	78 Equipping Centers enrollment	79 N.C.M.T. children enrollment	80 N.C.M.T. youth enrollment	81 N.C.M.T. adult enrollment	82 Hold File enrollment	83 General officers enrollment	84 Enrollment of mission(s) of church	85 Total Church Training enrollment	86 Average weekly Church Training attendance
BALSAM													
BALSAM GROVE													
BIG RIDGE													
BLACK MOUNTAIN													
BUFF CREEK													
CALVARY	2	3	22	21	0	0	0	0	0	0	0	0	27
CASHIERS	4	6	10	35	0	0	0	0	0	0	2	0	57
CULLOWHEE													
DEITZ MEMORIAL													
DICKS CREEK													
EAST FORK	2	8	3	17	0	0	0	0	0	2	0	0	32
EAST SYLVA													
FALL CLIFF													
GREENS CREEK	0	0	0	16	0	0	0	0	16	3	0	35	15
HAMBURG	3	12	7	22	0	0	0	0	0	3	0	47	41
HYATTS CHAPEL													
JARRETT MEMORIAL	0	5	12	18	0	0	0	0	0	1	0	36	20
JOHNS CREEK													
LAUREL BRANCH													
LITTLE SAVANNAH	7	8	9	25	0	0	0	0	0	3	0	49	30
LOCUST FIELD													
LIBERTY													
LONG BRANCH													
LOVEDALE	0	5	12	15	0	0	0	0	0	2	0	34	15
LUMBERTON													
MOSES CREEK													
MOUNT PLEASANT													
NEW HOPE	18	34	16	53	0	0	0	0	13	6	0	140	85
NEW SAVANNAH													
OCHRE HILL	10	5	66	54	0	0	0	0	0	2	0	77	46
OLD SAVANNAH	10	30	0	0	0	0	0	0	0	9	0	59	50
PINE CREEK													
ROCKDALE													
SCOTT'S CREEK	6	10	18	30	0	0	0	0	0	2	0	66	40
SHOAL CREEK	0	0	11	88	0	0	0	0	24	2	0	45	13
SOLS CREEK													
SPEEDWELL													
SYLVA, FIRST	20	29	0	0	0	0	0	0	0	1	0	50	21
TILLEY CREEK													
TROUT CREEK													
TUCKASEGEE													
UNITY													
WEBSTER	0	0	0	77	0	0	0	0	0	0	0	13	14
WILKESDALE	0	7	2	19	0	0	0	0	0	2	0	28	14
WILMONT													
WOLF CREEK													
YELLOW MOUNTAIN													
ZION HILL	4	6	10	42	0	0	0	0	0	5	0	67	47

**TABLE D**  
**CHURCH MUSIC**  
 YEAR ENDING  
 June 30, 1981  
 Associational Music Director  
 Coy Deitz  
 Rt. 2, Sylva, NC 28779

CHURCHES	87 Preschool enrollment (4-5 years)	88 Children enrollment (6-8 years or grades 1-3)	89 Children enrollment (9-11 years or grades 4-6)	90 Youth enrollment (12-14 years or grades 7-9)	91 Youth enrollment (15-17 years or grades 10-12)	92 Adult enrollment (18 and over)	93 Handbell ringers enrollment	94 Vocal ensembles enrollment	95 Instrumental ensembles enrollment	96 General music leaders enrollment	97 Enrollment of mission(s) of church	98 Total ongoing Church Music enrollment
BALSAM	7	10	12	10	5	5	0	0	3	6	0	49
BALSAM GROVE	0	0	0	0	0	0	0	0	0	0	0	0
BIG RIDGE												
BLACK MOUNTAIN	4	2	5	4	4	10	0	8	0	4	0	41
BUFF CREEK	0	0	0	3	2	0	15	0	0	0	2	22
CALVARY	0	0	0	0	0	0	0	0	0	0	0	0
CASHIERS	8	4	4	9	16	22	0	15	8	3	0	89
CULLOWHEE	0	0	0	2	0	25	8	0	0	1	0	36
DEITZ MEMORIAL	0	0	0	1	11	0	0	2	0	2	0	16
DICKS CREEK	0	0	0	0	0	0	0	0	0	0	0	0
EAST FORK	0	0	0	0	0	0	0	0	0	0	0	0
EAST SYLVA	8	15	15	0	1	40	0	0	0	3	0	92
FALL CLIFF	0	0	0	0	0	0	0	0	0	0	0	0
GREENS CREEK	0	0	0	0	0	12	0	0	0	2	0	14
HAMBURG	6	5	2	7	0	14	0	9	0	4	0	47
HYATTS CHAPEL	2	1	8	0	0	14	0	0	0	1	0	26
JARRETT MEMORIAL	0	0	2	2	4	12	0	0	2	2	0	22
JOHNS CREEK	0	0	4	0	6	12	2	2	0	2	0	28
LAUREL BRANCH	0	0	0	0	0	0	0	0	0	0	0	0
LIBERTY												
LITTLE SAVANNAH	0	0	0	0	0	0	0	0	0	0	0	0
LOCUST FIELD	0	0	0	0	0	0	0	0	0	0	0	0
LONG BRANCH	0	0	0	0	0	0	0	0	0	0	0	0
LOVEDALE	0	16	10	0	18	17	0	4	0	2	0	67
LUMBERTON	0	0	0	0	0	0	0	0	0	0	0	0
MOSES CREEK	0	3	2	3	0	12	0	0	0	2	0	22
MOUNT PLEASANT	0	0	0	0	0	0	0	0	0	0	0	0
NEW HOPE	0	3	4	13	7	35	0	3	1	7	0	73
NEW SAVANNAH	0	0	0	0	0	0	0	0	0	0	0	0
OCHRE HILL	0	0	0	0	0	0	0	0	0	0	0	0
OLD SAVANNAH	0	0	0	0	0	0	0	0	0	0	0	0
PINE CREEK	0	0	0	0	0	0	0	0	0	0	0	0
ROCKDALE	1	1	1	0	2	12	0	0	0	0	0	17
SCOTT'S CREEK	15	9	8	4	11	28	0	9	0	3	0	87
SHOAL CREEK	0	0	0	0	6	14	0	0	0	4	0	24
SOLS CREEK												
SPEEDWELL	0	4	4	3	3	10	0	3	0	6	0	32
SYLVA, FIRST	26	10	15	8	12	25	14	0	0	6	0	116
TILLEY CREEK	0	0	0	0	0	0	0	0	0	0	0	0
TROUT CREEK												
TUCKASEGEE	0	0	0	0	0	0	0	0	0	3	0	3
UNITY	0	0	0	0	0	0	0	0	0	0	0	0
WEBSTER	0	0	0	0	0	0	0	0	0	0	0	0
WILKESDALE	0	0	0	0	0	0	0	0	0	0	0	0
WILMONT	0	0	0	0	0	0	0	0	0	0	0	0
WOLF CREEK												
YELLOW MOUNTAIN	0	0	0	0	0	0	0	0	0	0	0	0
ZION HILL	0	0	0	5	0	25	0	0	0	2	0	32



**TABLE G  
TOTAL RECEIPTS,  
LOCAL EXPENDITURES  
& STEWARDSHIP  
YEAR ENDING  
June 30, 1981**

Associational Treasurer  
Rev. Harry Vance  
Rt. 3, Sylva, NC 28779

**CHURCHES**

	21	22	23	27a				27b	124	125	126	127	128	129	130	131	132	133
	Number of tithers	Cooperative Program goal as percent of total budget	Associational missions goal as percent of total budget	Budget promotion or emphasis used during the year				Budget	Total tithers, all offerings, and special gifts	All other receipts	Total receipts	Money borrowed during the year	Church staff salaries	Money paid out on new construction during the year	Debt retirement during the year	Church literature	All other local expenditures	Total local expenditures
				None	Forward Program or Alternate	Committed to Ministries	Tithers Commitment	Other	YES	NO								
BALSAM	30	0	0	X					X			9480	1124	4047	466	14195	29311	
BALSAM GROVE	0	0	0	X					X			2673	0	0	177	1655	4505	
BIG RIDGE												0	0	0	0	0	0	
BLACK MOUNTAIN	40	0	0		X			X				2167	1954	636	187	2289	7234	
BUFF CREEK	30	10	25	X				X				10223	0	0	1314	1200	2737	
CALVARY	8	0	0	X				X				9658	0	0	643	2136	10063	
CASHIERS	55	0	0					X				57798	1366	0	1924	9960	31311	
CULLOWHEE												0	0	0	0	0	0	
DEITZ MEMORIAL	20	2	2	X					X			2400	0	0	78	973	3452	
DICKS CREEK	4	0	0	X				X				2382	248	0	135	2074		
EAST FORK		10	0					X				12100	0	0	765	100	5461	
EAST SYLVA	150	10	0	X				X				12100	0	0	0	0	4065	
FALL CLIFF	0	0	0	X				X				92960	0	0	0	0	34658	
GREENS CREEK	25	17	5	X				X				3560	0	0	123	630	2535	
HAMBURG	25	0	0	X				X				24053	75	0	670	7837	18697	
HYATTS CHAPEL	14	0	0	X				X				37000	0	0	12000	11050	26014	
JARRETT MEMORIAL	35	3	4					X	X			20124	0	834	0	16703	3399	
JOHNS CREEK	1	0	0	X				X				19342	308	0	636	11143	23627	
LAUREL BRANCH	0	0	0	X				X				5309	1572	0	170	2207	3949	
LIBERTY												0	0	0	0	0	0	
LITTLE SAVANNAH	10	2	2	X				X				10916	0	0	430	1901	5056	
LOCUST FIELD	14	0	0	X				X				10980	0	0	227	7373	12488	
LONG BRANCH	26	0	0	X				X				21429	0	0	1173	4206	13316	
LOVEDALE	25	3	2.5	X				X				31974	116	0	1729	10040	23601	
LUMBERTON	0	0	0	X				X				2110	0	0	35	538	1822	
MOSES CREEK	31	0	0	X				X				11165	0	4430	1094	385	1890	
MOUNT PLEASANT	25	0	0	X				X				18034	0	0	502	0	7273	
NEW HOPE	35	0	0	X				X				18034	0	0	1808	8772	31991	
NEW SAVANNAH	4	0	0	X				X				35599	0	9700	11711	0	6898	
OCHRE HILL	28	4	2	X				X				400	0	0	200	0	2183	
OLD SAVANNAH	0	0	0	X				X				36739	386	0	1728	2300	1483	
PINE CREEK	30	0	0	X				X				17918	487	18405	0	833	3147	
ROCKDALE	10	0	0	X				X				12840	118	12958	0	248	1332	
SCOTTS CREEK	95	10	2	X				X				11411	0	4251	0	473	4500	
SHOAL CREEK	30	10	5	X				X				82328	0	26926	0	5591	22195	
SOLS CREEK												0	0	0	0	0	0	
SPEEDWELL	11	0	0	X				X	X			7226	0	6166	3911	877	602	
SYLVA, FIRST	75	12	2			X		X				147874	4568	152442	0	54656	59118	
TILLEY CREEK	15	0	0	X				X				0	0	0	0	0	12651	
TROUT CREEK												0	0	0	0	0	0	
TUCKASEGEE	0	0	0	X				X				17954	0	17954	0	866	2483	
UNITY	3	0	0	X				X				11399	0	11399	0	10818	10818	
WEBSTER	15	7.5	0	X				X				21085	88	21173	0	490	17387	
WILKESDALE	6	0	0	X				X				7283	0	7283	0	559	7469	
WILMONT	20	0	0	X				X				2439	0	2439	0	2070	2070	
WOLF CREEK												0	0	0	0	0	0	
YELLOW MOUNTAIN	10	0	0	X				X				13953	4120	18073	0	7800	4336	
ZION HILL	0	0	0	X				X				0	0	8115	12839	5875	15085	

**TABLE H  
MISSION  
EXPENDITURES  
YEAR ENDING  
June 30, 1981**

Associational Clerk  
Mrs. Annie Hoyle  
P.O. Box 446,  
Cullowhee, NC 28723

**CHURCHES**

	134	135	136	137	138	139	140	141	142	143	144	145	146	147	148
CHURCHES	CHURCH SPONSORED MISSIONS			OTHER MISSION CAUSE EXPENDITURES											
	Money paid out on new construction during the year	All other church sponsored mission expenditures	Total church sponsored mission expenditures	Cooperative Program	Associational missions program	Designated: State missions	Designated: SB Home Missions (incl. Anne Armstrong Easter offering)	Designated: SB Foreign Missions (incl. Lottie Moon Christmas offerings)	Designated: SB Christian education (school, etc.)	Designated: SB Children's homes (cash plus goods)	Designated: SB Hospitals	Designated: SB Homes for the aged	Designated: All other (Bible Society, Temperance League, etc.)	Total other mission cause expenditures	Grand Total Mission expenditures
BALSAM	0	0	0	225	200	88	88	88	0	244	88	100	1982	1987	2877
BALSAM GROVE	0	0	0	0	0	0	0	0	0	0	0	0	0	0	0
BIG RIDGE															
BLACK MOUNTAIN	0	0	0	0	600	0	0	0	60	0	0	868	1528	1528	
BUFF CREEK	0	0	0	944	1000	195	1058	1362	0	400	3615	4459	4459		
CALVARY	10707	200	10707	1142	450	75	75	75	25	600	400	7766	13766	1842	
CASHIERS				600	600	1000	1200	2000	2000	0	0	0	0	0	0
CULLOWHEE															
DEITZ MEMORIAL	80	0	80	99	82	35	0	0	0	0	0	55	172	351	
DICKS CREEK	0	4837	4837	4837	0	320	100	0	0	25	0	445	5602		
EAST FORK	0	1200	1200	600	246	400	61	31	0	0	0	0	738	1800	
EAST SYLVA	0	0	0	7310	753	397	672	1534	0	0	0	1015	3618	10927	
FALL CLIFF	0	0	0	0	0	0	1301	0	0	0	0	0	1301	1301	
GREENS CREEK	0	0	0	3075	904	137	375	1050	0	0	125	2531	5606		
HAMBURG	0	0	0	2734	1781	278	385	514	365	312	315	3951	6685		
HYATTS CHAPEL	500	300	800	0	1017	0	0	0	0	0	0	0	0	1017	
JARRETT MEMORIAL	0	0	0	450	1364	138	250	500	0	0	0	0	2252	2702	
JOHNS CREEK	0	0	0	0	50	0	0	0	0	0	0	67	117	117	
LAUREL BRANCH	0	0	0	0	0	0	0	0	0	0	0	0	0	0	
LIBERTY															
LITTLE SAVANNAH	387	0	387	120	0	63	0	50	0	24	0	120	353	860	
LOCUST FIELD	0	0	0	110	204	0	252	214	0	234	0	233	1036	1146	
LONG BRANCH	0	0	0	0	530	364	378	318	0	236	228	2411	4514	4514	
LOVEDALE	0	0	0	878	720	819	350	550	0	0	0	178	2617	3495	
LUMBERTON	0	0	0	100	115	50	0	0	0	0	0	0	165	265	
MOSES CREEK	0	0	0	50	535	0	0	250	0	340	0	0	1125	1175	
MOUNT PLEASANT	0	0	0	140	0	0	0	75	0	0	0	1365	1580		
NEW HOPE	0	1250	1250	150	835	0	75	100	200	0	0	800	2010		
NEW SAVANNAH	0	0	0	500	0	0	0	350	0	0	0	0	350	500	
OCHRE HILL	0	0	0	1200	900	1119	278	1600	325	325	0	308	4855	6055	
OLD SAVANNAH	0	0	0	109	240	25	508	900	275	225	0	873	8047	3156	
PINE CREEK	0	0	0	0	0	78	0	0	912	0	0	0	990	990	
ROCKDALE	0	0	0	0	882	1189	50	89	0	0	0	0	2210	2210	
SCOTTS CREEK	0	0	0	6345	1320	1000	1510	2500	0	0	2764	9094	15439		
SHOAL CREEK	0	0	0	3041	2549	897	1015	0	0	0	0	0	5732	8773	
SOLS CREEK															
SPEEDWELL	0	0	0	113	70	0	0	0	400	120	0	602	1192	1305	
SYLVA, FIRST	0	0	0	18129	2520	1000	1000	5800	0	0	4116	14436	32565		
TILLEY CREEK	0	0	0	0	0	0	0	0	0	0	0	0	0	0	
TROUT CREEK															
TUCKASEGEE	0	0	0	490	505	0	0	0	0	0	0	0	505	995	
UNITY	0	0	0	0	0	0	0	0	0	0	0	0	0	0	
WEBSTER	0	0	0	1265	600	505	398	642	0	0	604	2200	2200		
WILKESDALE	0	0	0	434	350	0	100	300	0	2200	530	1282			
WILMONT	0	0	0	0	0	0	2164	194	0	0	0	0	0	0	
WOLF CREEK															
YELLOW MOUNTAIN	0	0	0	0	10	5	0	1409	0	10	0	703	2137	2137	
ZION HILL	0	0	0	78	120	107	2164	194	0	0	953	3538	3616		

TABLE I  
**SPECIAL INFORMATION**  
 YEAR ENDING  
 June 30, 1981  
 Moderator  
 Rev. Ray McCall  
 P.O. Box 34, Webster,  
 NC 28788

CHURCHES	28 No. church-type missions started during the year	29 No. church-type missions currently operating	30 No. other-type missions started during the year	31 No. other-type missions currently operating	32 No. New Sunday School Members	33 Christian day school enrollment	34 \$ Annie Armstrong Offering	35 No. of adult Sunday School classes	36 N-none R-radio TV-TV B-both	37 Number of revivals	38 No. of Spanish Sunday School classes	39 No. of college students Baptized	40 No. of persons who served in a missions/evangelism project	41 Library	42-53 Does church have, observe, plan, use, etc? Y=Yes N=No									
															42 Deacon F.M.P.	43 S.S. Lead. Prep. Week	44 Baptist Doctrine Study	45 Auto. data processing	46 Bapt. Sem. Col. Day	47 Minutes microfilmed	48 Evangelism Committee	49 Annuity Board protection for the pastor	50 Brotherhood Lead. Week	51 Seminary study
BALSAM	0	0	0	0	15	0	0	4	Z	Z	0	0	0	Z	Z	Z	Z	Z	Z	Z	Z	Z	Z	Z
BALSAM GROVE	0	0	0	0	0	0	0	2	Z	Z	0	0	0	Z	Z	Z	Z	Z	Z	Z	Z	Z	Z	Z
BIG RIDGE																								
BLACK MOUNTAIN	0	0	0	0	4	0	0	1	Z	Z	0	0	0	Z	Z	Z	Z	Z	Z	Z	Z	Z	Z	Z
BUFF CREEK	0	0	0	0	0	1058	0	7	Z	Z	0	0	0	Z	Z	Z	Z	Z	Z	Z	Z	Z	Z	Z
CALVARY	0	0	0	0	1	0	75	2	Z	Z	0	0	0	Z	Z	Z	Z	Z	Z	Z	Z	Z	Z	Z
CASHIERS	0	0	0	0	0	1200	0	4	Z	Z	0	0	0	Z	Z	Z	Z	Z	Z	Z	Z	Z	Z	Z
CULLOWHEE	0	0	0	0	0	405	0	5	Z	Z	0	0	0	Z	Z	Z	Z	Z	Z	Z	Z	Z	Z	Z
DEITZ MEMORIAL	0	0	0	0	20	0	0	405	Z	Z	0	0	3	Z	Z	Z	Z	Z	Z	Z	Z	Z	Z	Z
DICKS CREEK	0	0	0	0	0	0	0	1	Z	Z	0	0	0	Z	Z	Z	Z	Z	Z	Z	Z	Z	Z	Z
EAST FORK	0	0	0	0	0	0	61	2	Z	Z	0	0	0	Z	Z	Z	Z	Z	Z	Z	Z	Z	Z	Z
EAST SYLVA	0	0	0	0	25	0	672	8	Z	Z	0	0	0	Z	Z	Z	Z	Z	Z	Z	Z	Z	Z	Z
FALL CLIFF	0	0	0	0	1	0	0	1	Z	Z	0	0	0	Z	Z	Z	Z	Z	Z	Z	Z	Z	Z	Z
GREENS CREEK	0	0	0	0	4	0	375	3	Z	Z	0	0	0	Z	Z	Z	Z	Z	Z	Z	Z	Z	Z	Z
HAMBURG	0	0	0	0	0	0	0	0	Z	Z	0	0	0	Z	Z	Z	Z	Z	Z	Z	Z	Z	Z	Z
HYATTS CHAPEL	0	0	0	0	5	0	0	3	Z	Z	0	0	0	Z	Z	Z	Z	Z	Z	Z	Z	Z	Z	Z
JARRETT MEMORIAL	0	0	0	0	2	0	250	4	Z	Z	0	0	0	Z	Z	Z	Z	Z	Z	Z	Z	Z	Z	Z
JOHNS CREEK	0	0	0	0	0	0	50	2	Z	Z	0	0	0	Z	Z	Z	Z	Z	Z	Z	Z	Z	Z	Z
LAUREL BRANCH	0	0	0	0	0	0	0	2	Z	Z	0	0	0	Z	Z	Z	Z	Z	Z	Z	Z	Z	Z	Z
LIBERTY																								
LITTLE SAVANNAH	0	0	0	0	7	0	63	2	Z	Z	0	0	0	Z	Z	Z	Z	Z	Z	Z	Z	Z	Z	Z
LOCUST FIELD	0	0	0	0	0	0	252	1	Z	Z	1	0	0	Z	Z	Z	Z	Z	Z	Z	Z	Z	Z	Z
LONG BRANCH	0	0	0	0	0	0	377	2	Z	Z	1	0	0	Z	Z	Z	Z	Z	Z	Z	Z	Z	Z	Z
LOVEDALE	0	0	0	0	10	0	350	7	Z	Z	0	0	0	Z	Z	Z	Z	Z	Z	Z	Z	Z	Z	Z
LUMBERTON	0	0	0	0	3	0	0	0	Z	Z	0	0	0	Z	Z	Z	Z	Z	Z	Z	Z	Z	Z	Z
MOSES CREEK	0	0	0	0	0	0	0	2	Z	Z	1	0	0	Z	Z	Z	Z	Z	Z	Z	Z	Z	Z	Z
MOUNT PLEASANT	0	0	0	0	0	0	0	2	Z	Z	1	0	0	Z	Z	Z	Z	Z	Z	Z	Z	Z	Z	Z
NEW HOPE	0	0	0	0	26	0	150	3	Z	Z	1	0	0	Z	Z	Z	Z	Z	Z	Z	Z	Z	Z	Z
NEW SAVANNAH	0	0	0	0	0	0	100	1	Z	Z	0	0	0	Z	Z	Z	Z	Z	Z	Z	Z	Z	Z	Z
OCHRE HILL	0	0	0	0	10	0	278	4	Z	Z	0	1	0	Z	Z	Z	Z	Z	Z	Z	Z	Z	Z	Z
OLD SAVANNAH	0	0	0	0	0	0	508	2	Z	Z	1	0	0	Z	Z	Z	Z	Z	Z	Z	Z	Z	Z	Z
PINE CREEK	0	0	0	0	0	0	0	1	Z	Z	1	0	0	Z	Z	Z	Z	Z	Z	Z	Z	Z	Z	Z
ROCKDALE	0	0	0	0	4	0	0	4	Z	Z	1	0	0	Z	Z	Z	Z	Z	Z	Z	Z	Z	Z	Z
SCOTTS CREEK	0	0	0	0	0	0	1510	7	Z	Z	0	0	0	Z	Z	Z	Z	Z	Z	Z	Z	Z	Z	Z
SHOAL CREEK	0	0	0	0	14	0	897	4	Z	Z	3	0	0	Z	Z	Z	Z	Z	Z	Z	Z	Z	Z	Z
SOLS CREEK																								
SPEEDWELL	0	0	0	0	10	0	0	3	Z	Z	0	0	0	Z	Z	Z	Z	Z	Z	Z	Z	Z	Z	Z
SYLVA, FIRST	0	1	0	0	24	0	1000	9	Z	Z	1	0	0	Z	Z	Z	Z	Z	Z	Z	Z	Z	Z	Z
TILLEY CREEK	0	0	0	0	0	0	0	0	Z	Z	0	0	0	Z	Z	Z	Z	Z	Z	Z	Z	Z	Z	Z
TROUT CREEK	0	0	0	0	0	0	0	2	Z	Z	0	0	0	Z	Z	Z	Z	Z	Z	Z	Z	Z	Z	Z
TUCKASEGEE	0	0	0	0	0	0	0	2	Z	Z	2	0	0	Z	Z	Z	Z	Z	Z	Z	Z	Z	Z	Z
UNITY																								
WEBSTER	0	0	0	0	0	0	0	0	Z	Z	1	0	0	Z	Z	Z	Z	Z	Z	Z	Z	Z	Z	Z
WILKESDALE	0	0	0	0	0	0	100	3	Z	Z	0	0	0	Z	Z	Z	Z	Z	Z	Z	Z	Z	Z	Z
WILMONT	0	0	0	0	0	0	0	2	Z	Z	1	0	0	Z	Z	Z	Z	Z	Z	Z	Z	Z	Z	Z
WOLF CREEK																								
YELLOW MOUNTAIN	0	0	0	0	0	0	0	2	Z	Z	1	0	0	Z	Z	Z	Z	Z	Z	Z	Z	Z	Z	Z
ZION HILL	0	0	0	0	0	0	194	4	Z	Z	1	0	0	Z	Z	Z	Z	Z	Z	Z	Z	Z	Z	Z



*This book printed by*  
**Edmonds Printing Company**  
Lawrenceville, Virginia