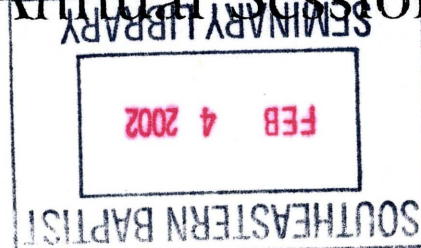


2001
Annual Minutes
of the
Tuckaseegee Baptist
Association

One Hundred Seventy-Second
Annual Session



Buff Creek Baptist Church
Thursday, October 18, 2001
and
East Fork Baptist Church
Friday, October 19, 2001

1937 4 2005

2001 ANNUAL MINUTES

for the One Hundred Seventy-Second Annual Meeting

of the

TUCKASEIGEE BAPTIST ASSOCIATION

**Buff Creek Baptist Church
Thursday, October 18, 2001**

and

**East Fork Baptist Church
Friday, October 19, 2001**

**Mike Dellinger, Moderator
Clemmy Queen, Vice Moderator
Amanda Bialy, Clerk**

200 TALKING MINUTES

for the Quarterly Society Meeting

TUCKASSEE
BAPTIST ASSOCIATION

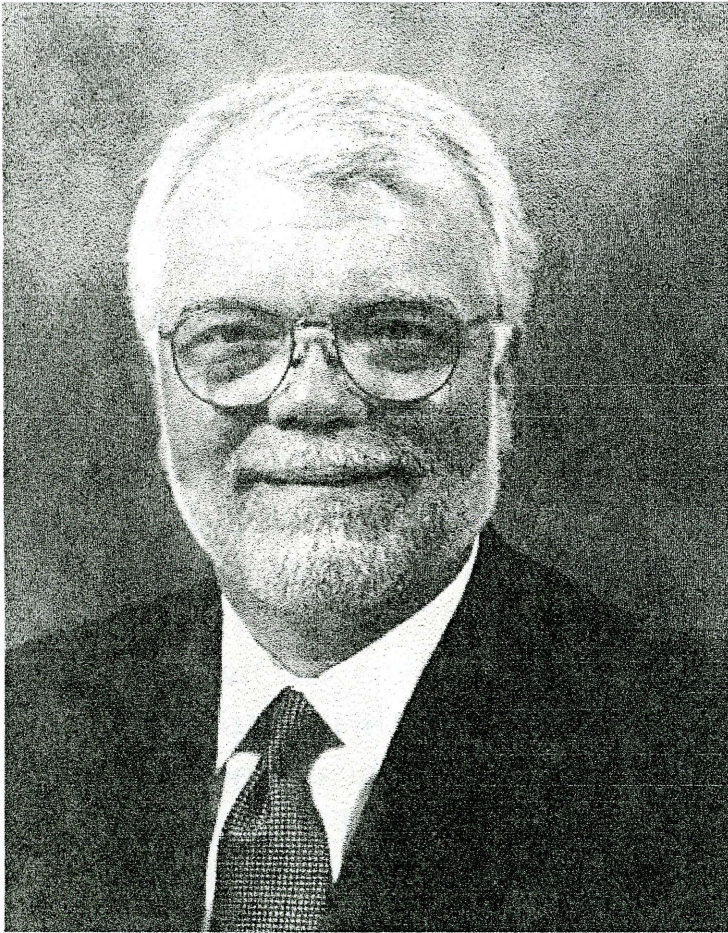
Buff Spring Baptist Church
Thursday, October 18, 2001

and

East Pine Baptist Church
Friday, October 19, 2001

Wife Delliger, Moderator
Clemmy Queen, Vice Moderator
Amanda Boly, Clerk

DEDICATED TO REV. A. EDWARD BEDDINGFIELD, JR.



Edward Beddingfield was born in Raleigh, NC on December 3, 1950. He was a member of the Immanuel Baptist Church in Raleigh, NC. His first pastorate was at Warrenton Baptist Church in Warrenton, NC in 1989. From there he moved to Sylva and became the longest consecutive pastor in the history of the Sylva First Baptist Church. He was pastor from 1989-2001. During his tenure, the church undertook \$450,000.00 capital campaign to purchase adjacent property on its block for future expansion and to build an elevator to provide access for those with disabilities. The church also renovated the sanctuary and kitchen. During his tenure as part of the Tuckasegee Baptist Association, he served on the Personnel Committee, preached at the Annual Meeting, served as Moderator and co-chaired a Committee on Associational Relationships.

He also served the Baptist State Convention of North Carolina in his roles on the Council on Christian Life & Public Affairs, School of Pastoral Care Foundation Board of Directors, NC Baptist Hospital, Committee on Committees, Generals Board: Worship Committee & Ecumenical Cooperation, Executive Committee & Subcommittee to study Biblical Recorder, Resolutions Committee, Served on two committees

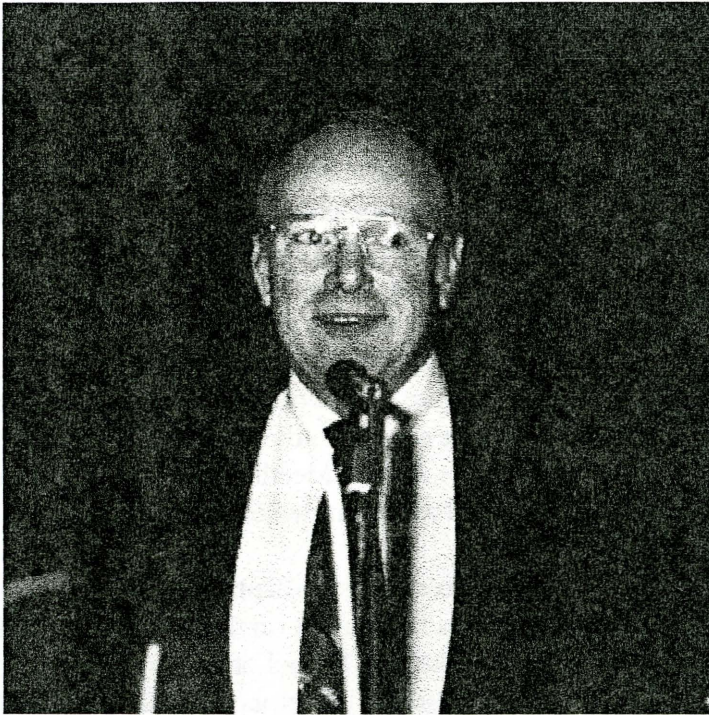
attempting to understand and deal with denominational conflict at the state convention level: Committee of Twenty & Commission on Cooperation and he also served on the Committee on Nominations. He was also the preacher for the Summer Youth Conference at Caswell as well as Music Leader for Senior Adult week at Caswell. He was also a speaker at NC Baptist Retirement Homes (Richmond Hill in Asheville and Brookridge in Winston-Salem). He also belonged to the American Association of Pastoral Counselors.

He also served many capacities in the community of Sylva. He spoke monthly at the National Guard as well as at Skyland Nursing Center & Ensley's Nursing Center and occasionally at Mt. Trace Nursing Center. He spoke for the Baptist Student Union at Western Carolina University. He was also active in the Sylva Inter-Church group which met for worship service at Thanksgiving and Easter. He served as a Harris Regional Hospital Chaplain's Associate as well as on the Harris Regional Hospital Advisory Committee for selection of a new chaplain. He served as a Trustee for Western Carolina University. He was also a member of the UNC Morehead Scholarship local selection committee. He belonged to the Sylva Rotary Club. He also founded the Pirates of the Tuckasegee bluegrass and gospel music group as well as a member of the 107 Blues Band which plays electric blues and rock 'n' roll.

His wife, Sarah taught English and Social Studies at Blue Ridge, Scotts Creek & Fairview. She was also selected as Jackson County Teacher of the Year. Their older daughter, Shannon, graduated from Smoky Mtn. High School and was one of 144 nationwide Presidential Scholars and attends UNC at Chapel Hill. Their younger daughter, Meghan, graduated from Fairview Elementary School and played the flute in the Smoky Mtn. High School Band.

This dedication of the Annual Minutes is the Tuckasegee Baptist Association's "Thank You" for the years of hard work and service.

Dedicated to Rev. Mike Moore



Michael Kent Moore was born on January 27, 1943 in Sylva, NC. He was saved at the Scotts Creek Baptist Church. He was licensed and ordained by Hyatts Chapel Baptist Church in Whittier, NC. He graduated from Sylva High School and received a B.A. from Western Carolina University. He earned a Master of Divinity from the Southern Baptist School for Biblical Studies in October 1988. He earned a

Doctor of Ministry from the Southern Baptist School for Biblical Studies in July 1990. He has served as the pastor of the Hyatts Chapel and New Hope Baptist Churches. He served Hyatts Chapel as pastor from August 1985 to October 1988. He has served as Pastor of New Hope Baptist Church from 1988 to the present.

He married Doris Gunter and they have a son, Kent Moore, who with his wife Lisa have two children: Michael and Matthew Moore. Rev. Mike Moore and his wife Doris also have a daughter, Trina M. Phillips who with her husband, Larry have a son: Tyler Phillips.

Rev. Moore served as Moderator of the Association in 1986 and 1987. He also served as Chairman of the Personnel Committee from 1997-2000. From 1998-1999 he co-chaired the Relationship Committee. He is presently serving on the Finance Committee. Rev. Moore is widely known for his evangelistic work, preaching and revivals all over North Carolina and other states.

Dedicated to the Memory of Ada McCoy



Ada Jennings McCoy was born December 15, 1918 to Charlie and Ellen Robinson Jennings. She had three brothers, Grant, Glenn and Gordon and one sister Helen J. Johnson. Gordon Jennings is the only living member of this family. She was married to Emory McCoy on October 14, 1939. He is shown with her in this picture and was very supportive in all of her mission work. They have one daughter, Bonita McCoy Boggs who is a talented musician, a

school teacher and also a good organizer as was Ada.

Ada was active in Hamburg Baptist Church for many years. A Sunday School teacher of Junior pupils most of her life, Bible School teacher as long as she was able. She was active in W.M.U., Homemakers Club, Glenville Community Development (C.D.C.) and a volunteer at school.

Through her organization skills, she arranged visits to Ensley's Rest Home and Skyland Care Center for about 15 years, devotions once a month and through our W.M.U., birthday cards for each resident and a gift of \$5.00. She also provided cards and gifts to each child at Broyhill Children's Home in Clyde from the Hamburg W.M.U. She was Associational Missions Chairman for a number of years attending all meetings and promoting the Lord's work. Ada went home to be with Jesus on June 7, 2000. The life and work of Ada McCoy in the Tuckasegee Baptist Association is greatly appreciated and will not be forgotten.

Table of Contents

DEDICATIONS	
In honor of Rev. Ed Beddingfield.....	ii
In honor of Rev. Mike Moore.....	iii
In memory of Mrs. Ada McCoy.....	iv
ORDER OF BUSINESS, First Session.....	1
ORDER OF BUSINESS, Second Session.....	2
PROCEEDINGS, First Session.....	3
PROCEEDINGS, Second Session.....	5
CALENDAR OF ACTIVITIES, 2001-2002.....	8
DIRECTOR OF MISSIONS REPORT.....	9
COMMITTEE REPORTS	
Nominating	10
Committee on Committees.....	11
Executive.....	12
MESSENGERS LIST.....	13
PROGRAM REPORTS	
Pastor, Deacons & Spouse Fellowship.....	15
Music.....	17
Place & Preacher.....	18
Senior Adult.....	18
Sunday School.....	19
Vacation Bible School.....	20
Woman's Missionary Union.....	21
FINANCIAL REPORTS	
Proposed Budget 2001.....	23
Summary.....	24
INSTITUTIONAL REPORTS	
Baptist Children's Homes.....	25
Baptist Foundation.....	27
Baptist Hospitals.....	28
Baptist Retirement Homes.....	30
Council on Christian Higher Education.....	31
Campbell University.....	32
George W. Truett Baptist Camp & Conference Center.....	33
AGENCY REPORTS	
Biblical Recorder.....	34
Christian Action League.....	35
WestCare Health System Chaplain.....	37
Nantahala Counseling Center.....	38
South West Area Resort Ministry (SWARM).....	39
Office of Annuity.....	40
ARTICLES OF INCORPORATION.....	41
BY-LAWS.....	43

DIRECTORIES

Associational Directory.....	51
Associational Council.....	54
Congregational Directory.....	55
Pastors.....	55
Minister of Education.....	55
Youth Ministers.....	55
Secretaries.....	56
Clerks.....	56
Organists.....	58
Pianists.....	58
Sunday School Directors.....	58
Discipleship Training.....	59
Brotherhood Directors.....	59
WMU Directors.....	59
Deacon Chairmen.....	59
Treasurers.....	60
Prayer Ministry Coordinator.....	60
Music Directors.....	60
Ordained Ministers.....	61
Ministers Licensed.....	61
Changes in Pastors during 2000-2001.....	62
Historical Events.....	63
MEMORIALS.....	64
HISTORICAL TABLE.....	65
DIGEST OF CHURCH LETTERS, 2001.....	69
STATISTICAL TABLES	
Summary.....	71
Member & Congregational Information.....	73
Baptism Information.....	75
Sunday School Information.....	77
Discipleship Training Information.....	79
Music Ministry Information.....	81
Missions Involvement Information.....	83
Missions Education Information.....	85
General Financial Information.....	87
Missions Financial Information.....	89

"Churches Working Together Until Our Lord Comes"

"The Son of Man shall come.....Occupy till I come." (Mt.25:31, Lk.19:13)

TUCKASEIGEE BAPTIST ASSOCIATION

ONE HUNDRED SEVENTY-SECOND ANNUAL MEETING

ORDER OF BUSINESS

FIRST SESSION

THURSDAY, OCTOBER 18, 2001

BUFF CREEK BAPTIST CHURCH

MIKE DELLINGER, MODERATOR

4:30 PM SUPPER BUFF CREEK BAPTIST CHURCH
6:00 PM CONVENE & WELCOME MODERATOR

WORSHIP

CONGREGATIONAL SINGING REV. HARRY VANCE
SCRIPTURE & PRAYER REV. GERALD MORRIS, PASTOR
CHORAL MUSIC BUFF CREEK CHOIR
SCRIPTURE & SERMON REV. STEVE JAMISON
6:45 PM DECLARATION OF THE 172ND ANNUAL SESSION MODERATOR
ADOPTION OF ORDER OF BUSINESS RAY BUCHANAN
6:50 PM RECOGNITION OF NEW PASTORS & VISITORS REV. CLAUDE CONARD
APPOINTMENT OF COMMITTEE ON COMMITTEES MODERATOR
6:55 PM CONGREGATIONAL SINGING REV. HARRY VANCE

REPORTS

7:00 PM SUNDAY SCHOOL DENNIS ENSLEY
MUSIC REV. HARRY VANCE
SENIOR ADULT ELOISE SHULER
YOUTH AMANDA DILLS
WMU LOIS ENSLEY
PASTOR, DEACON, SPOUSE FELLOWSHIP ART KEENER
VBS BETTY GREEN
DIRECTOR OF MISSIONS REV. CLAUDE CONARD

COMMITTEES

7:30 PM FINANCE BETTY BLANTON
TREASURER JESSE FLAKE
COMMITTEE ON COMMITTEE REV. STEVE JAMISON
NOMINATING COMMITTEE JOYCE CROWDER
REGISTRATION REPORT AMANDA BIALY
MEMORIALS HAZEL MONTEITH

MISCELLANEOUS

MISSION REPORTS

7:50 PM MISSION TRIPS WEBSTER BAPTIST CHURCH & BUFF CREEK BAPTIST CHURCH
LOCAL MISSIONS GENE MIDDLETON

WORSHIP

8:05 PM INTRODUCTION OF SPEAKER REV. ROBERT CLEGG
8:10 PM SPECIAL MUSIC SR. ADULT CHOIR
8:15 PM MESSAGE REV. EUGENE RIDLEY
PASTOR, LONG LEAF BAPTIST CHURCH
FORMER VICE-PRESIDENT OF THE GENERAL BOARD, BSC
9:00 PM BENEDICTION REV. STEVE ALEXANDER

"Churches Working Together Until Our Lord Comes"

"The Son of Man shall come....Occupy till I come." (Mt.25:31, Lk.19:13)

TUCKASEIGEE BAPTIST ASSOCIATION

ONE HUNDRED SEVENTY-SECOND ANNUAL MEETING

ORDER OF BUSINESS
SECOND SESSION

FRIDAY, OCTOBER 19, 2001

EAST FORK BAPTIST CHURCH

MIKE DELLINGER, MODERATOR

4:30 PM SUPPER EAST FORK BAPTIST CHURCH
6:00 PM CONVENE & WELCOME MODERATOR
6:05 PM SCRIPTURE & PRAYER REV. BRIAN BISHOP, PASTOR
CONGREGATIONAL SINGING REV. HARRY VANCE

REPORTS

6:15 PM APPALACHIAN MOUNTAIN MINISTRIES DON WATERS
WEST CARE HEALTH SYSTEM CHAPLAINCY RON ALLEN
NANTAHALA COUNSELING CENTER REV. CHARLES WYATT
BAPTIST STATE CONVENTION, ANNUITY BOARD JOHNNY ROSS
BAPTIST HOSPITAL PAUL MULLEN
UNITED CHRISTIAN MINISTRIES PAULA LUMB
BAPTIST CHILDREN'S HOMES REV. LLOYD FISH
7:00 PM CONGREGATIONAL SINGING REV. HARRY VANCE
REGISTRATION AMANDA BIALY

COMMITTEES

7:15 PM EXECUTIVE COMMITTEE REV. MIKE DELLINGER
PERSONNEL COMMITTEE REV. STEVE JAMISON
PLACE & PREACHER COMMITTEE REV. STEVE JAMISON
CREDENTIALS COMMITTEE REV. DENNIS BURRELL
EVANGELISM COMMITTEE REV. STEVE BIALY
RESOLUTIONS COMMITTEE REV. STEVE JAMISON
HISTORICAL EVENTS JOYCE CROWDER
FINANCE BETTY BLANTON

WORSHIP

8:00 PM CONGREGATIONAL SINGING REV. HARRY VANCE
SPECIAL MUSIC EAST SYLVA CHOIR
SCRIPTURE & SERMON REV. CHARLES DEAN
PASTOR, EAST SYLVA BAPTIST CHURCH
9:00 PM CLOSING CONGREGATIONAL SONG "FAMILY OF GOD"
BENEDICTION REV. MATTHEW LEDBETTER

PROCEEDINGS
172ND ANNUAL MEETING

FIRST SESSION, THURSDAY, OCTOBER 18, 2001

1. Buff Creek Baptist Church hosted the first session of the 172nd Annual Meeting of the Tuckasegee Baptist Association. A delicious meal was served at 4:30 p.m. for a total 142 present: 111 messengers and 31 visitors representing 27 churches (includes hostess committee members who prepared and served the meal).
2. Rev. Mike Dellinger, Moderator, welcomed everyone.
3. Rev. Harry Vance led in singing, "Mine Eyes Have Seen the Glory".
4. The Buff Creek Choir sang special music.
5. Rev. Steve Jamison, pastor of Shoal Creek Baptist Church, gave the sermon. His text was Mt. 5:38-48. He reminded everyone that our present actions affect future generations and that we should forget our rights and love our enemies.
6. The 172nd Annual Meeting was called to order by Moderator Mike Dellinger.
7. Ray Buchanan, Order of Business Committee Chairman, asked for changes to the Agenda: Buff Creek was unable to go on mission trip so no report from them will be given; Steve Alexander will give the Benediction. Motion was made and approved to adopt Order of Business with these changes.
8. Interim Director of Missions, Rev. Claude Conard, recognized new pastors in the Association. They are:

New Pastors -	Rick Conner, Dicks Creek Matt Ledbetter, Hamburg Avery Brown, Long Branch Al Cauley, Lumberton Jack Robinson, Mt. Pleasant	Terry Wehunt, Ochre Hill David Souderes, Old Savannah Randy Hyatt, Rockdale J. Ed Powell, Sols Creek Clifford Parker, Tilley Creek
Interim Pastors -	Harold Anderson, Cullowhee Lester Sutton, Hamburg Avery Brown, Long Branch	Steve Alexander, New Savannah Robert Fernandez, Tuckasegee Jack Hinson, Sylva First

REPORTS

9. The Moderator announced appointment of Committee on Committees and also announced the names of Resolution Committee. The Moderator called for reports.
10. Harry Vance led in singing, "To God be the Glory".
11. **Sunday School** - Dennis Ensley gave the Sunday School report and encouraged everyone to be actively involved in their Sunday Schools as well as Associational Sunday School Rallies. The report is on page 5.
12. **Music** - Rev. Harry Vance reported on another wonderful year of the Annual Singing. He also asked any church who would like to host next year's Annual Singing to let him know. The report is on page 9.
13. **Senior Adults** - Eloise Shuler gave the Sr. Adult report and shared about the Sept.29th, 2001 Picnic at Dellwood Baptist. She also reminded everyone the trip to Cherohala on

October 22, 2001. Report is on page 10.

14. **Youth** - Amanda Dills shared about Youthfest 2001 held October 19-21 at SCC. She asked for prayers and shared her excitement about what the Lord has and will do. She also stated that Josh Hyde, Youth Minister at Webster, will be helping her this year. The report is not in the book.

15. **WMU** - Lois Ensley gave the WMU Report with the theme of "Beyond Belief". She highlighted activities of WMU. Report is on page 12.

16. **Pastor, Deacon & Spouse** - Art Keener gave the Pastor, Deacon and Spouse Report. He also reminded everyone that this quarter's meeting would be held at Scotts Creek Baptist Church on Friday, October 26, 2001 with dinner beginning at 6:30 p.m. The report is on page 6.

17. **VBS** - Betty Greene gave the Vacation Bible School Report. Summer 2002 theme is: AMAZON OUTFITTERS "Expedition with the One True God". The report is on page 11.

18. **Director of Missions** - Rev. Claude Conard gave the report and reminded everyone that while numbers are important, so are attitudes. We need to make sure our attitudes are pleasing to the Lord. The report is on page 14.

19. Moderator recognized Claude Conard, Amanda Bialy, Secretary and Nora Peters, Bible Club Founder who spoke of their needs. Moderator called for committee reports.

COMMITTEES

20. **Finance** - Betty Blanton gave the report and highlighted and explained the proposed 2002 budget to be voted on during the second session. The budget is on page 31.

21. **Treasurer** - Jesse Flake gave the report. Mr. Flake recommended that the treasurer's report be approved. The report was adopted by a unanimous vote.

22. **Committee on Committees** - Steve Jamison presented the report. Nineteen people rotated off. Mike Dellinger asked for any nominations from the floor, none were given. The report was adopted by a unanimous vote. The report is on page 4.

23. **Nominating Committee** - Joyce Crowder presented the report. She stated that Mike Moses is the Baptist Children's Homes Representative. The motion was made and approved to accept the officers. The report is on page 3.

24. **Registration** - Amanda Bialy, Clerk, gave the registration report. There were 111 messengers and 31 visitors totaling 142 representing 27 churches.

25. **Memorials** - Hazel Monteith and Virginia Pangle gave the report. They lit candles and had three flags in memory of the 3 planes in which lives were lost due to the terrorist attacks. Mrs. Monteith and Mrs. Pangle led in prayer. The 2001 Annual will be dedicated to Rev. Mike Moore, Pastor at New Hope and Dr. Ed Beddingfield, former Pastor at Sylva First. The Annual will be in memory of Ada McCoy from Hamburg.

26. **Miscellaneous** - There were no miscellaneous reports.

MISSIONS

27. **Webster Baptist** - They took Mission Trip to upstate New York and conducted Revival, Backyard Bible Clubs, Construction, etc.. A group will also be going November 3-9, 2001.

28. **Other Mission Trips** - Scotts Creek took nine to Moldova. Zion Hill took a group to

Kentucky. Jarrett Memorial took a group to West Virginia and gave out food. Roy Burnette thanked everyone for their prayers and support for his daughter's trip to French Guiana.

29 **Local Missions** - Gene Middleton gave the report on the Mull Project.

30. Rev. Robert Clegg introduced the speaker: Rev. Eugene Riddley, Pastor of Longleaf Baptist Church; Former V.P. of the General Board Baptist State Convention.

31. The Senior Adult Choir sang Special Music, one of which was "Somebody Loves Me".

32. Rev. Eugene Riddley brought the message from Zechariah 10:4. Two doctrines throughout Scripture: 1) God's Sovereignty - God is totally divine 2) Man's Sinfulness - Man is totally depraved. Jesus is our position, possession and protection.

33. Steve Alexander led in the Benediction.

SECOND SESSION, FRIDAY, OCTOBER 19, 2001

1. East Fork Baptist Church hosted the second session of the 172nd Annual Meeting of the Tuckasegee Baptist Association. A total of 167 present with 123 messengers and 44 visitors representing 23 churches.

2. The Moderator, Mike Dellinger, called the meeting to order and opened the session by welcoming everyone..

3. Rev. Brian Bishop, pastor of East Fork Baptist Church, read the Scripture and led in prayer.

4. Rev. Harry Vance led in singing, "Leaning on the Everlasting Arms".

REPORTS

5. **Appalachian Mountain Ministries** - Don Waters gave the report. He shared what Appalachian Mountain Ministries has done in the last year. His report is not in the book.

6. **Harris Regional/Mountain Trace Chaplaincy** - Rev. Ron Allen, the new Chaplain, gave the report. He shared the ministry of this program and thanked the pastors who take part in it. His report is on the insert page.

7. **Nantahala Counseling Center** - The Moderator reminded everyone of the report on page 29 since Charles Wyatt could not attend.

8. **Annuity Board** - Johnny Ross gave the report. He stated that only 34% of Tuckasegee Baptist Association Pastors are enrolled in the Annuity Program. That number needs to be 100%. The report is on page 25.

9. **Baptist Hospitals** - Paul Mullen gave the report. He thanked everyone for the role they play when they give financially to the Baptist Hospitals. He read letters and told stories of people who were grateful for the financial help they had received. The report is on page 19.

10. **United Christian Ministries** - Paula Lumb gave the report. She shared about the number of people in Jackson County who had been helped through United Christian Ministry. She thanked the churches for their support. There is no report in the book.

11. **Baptist Children's Homes** - Rev. Lloyd Fish gave the report. He shared about the lives of the children who had been impacted through the ministry of Baptist Children's Homes. He thanked the churches for "leaving the light on" for these children through their financial giving. The report is on page 16.

12. **Registration** - Amanda Bialy, clerk, reported that there were 123 messengers and 44 visitors totaling 167 representing 23 churches.

COMMITTEES

13. **Executive Committee** - The Moderator gave the report and called for the other committee reports to be given. The report is on page 8.

14. **Personnel Committee** - Rev. Steve Jamison gave the report. He stated that a new Associational Secretary, Amanda Bialy, had been hired since last year's Annual Meeting.

15. **Place & Preacher Committee** - Rev. Steve Jamison presented the report on next year's meeting. Tuckasegee Baptist Church as the site for the Thursday night session was pending. The vote was taken and approved. Hamburg has agreed to host the Thursday night session of the 173rd Annual Meeting. The report is on page 10.

16. **Credentials Committee** - Rev. Roy Burnette gave the report. The Committee recommended that Trinity Baptist Church come under the watchcare of the Association for one year to be voted on at next year's Annual Meeting for full membership. He moved to approve the report. It was approved unanimously.

17. **Evangelism Committee** - Rev. Steve Bialy gave the report on the Jesus Video Project. He stated that the Steering Committee was in place and could move forward. He challenged every church to participate in prayer for the project, financially and in follow up so that the gospel could get into every home in Jackson County. There is no report in the book.

18. **Resolution Committee** - Rev. Steve Jamison read the committee report expressing thanks to Buff Creek for hosting the meeting on Thursday, October 18, 2001 and to East Fork for hosting the meeting on Friday, October 19, 2001 and for the wonderful meals. Thanks was also expressed to the speakers: Rev. Eugene Riddley & Rev. Steve Jamison on Thursday and Rev. Charles Dean on Friday. Thanks to Rev. Mike Dellinger for serving as Moderator and Clemmy Queen for serving as Vice-Moderator. Commendation went out to Donna Depew and Jesse Flake for all their help. Thanksgiving also went out to Claude Conard for his example and to Amanda Bialy for her secretarial work at the Office. Thanks was also expressed to Hazel Monteith and Virginia Pangle for their hard work on the Memorials Committee. A resolution was made in light of the events of September 11, 2001 to give prayerful support to the national leadership, military, rescue & recovery workers and international missionaries and to work for and pray for national and international peace. Commendation was given to the Baptist Men for their efforts at the Pentagon. A resolution was made that the Association seek to assist in disaster relief. A resolution was also made to join with the Baptist State Convention and other associations in opposing the institution of a state-sponsored lottery and to pray concerning whether or not to respond as an association to the introduction of the four bills calling for a state-sponsored lottery. Rev. Steve Jamison moved that we accept the report as read and the vote was unanimous.

19. **Historical Events** - Joyce Crowder gave the report and urged the churches to let the Associational Office know of church events. The report is on the insert page.

20. **Financial Budget Report** - Betty Blanton made the motion to approve the Finance Report. It was approved.

21. Robert Blanton made the suggestion that plans be made for the 175th Annual Meeting. A committee is to be appointed at the January Executive Committee Meeting.

22. Rev. Harry Vance led in singing, "There is Power in the Blood".
23. The East Sylva Choir gave the special music, "Put Your Feet Under God's Table" and "Beautiful Table".
24. Rev. Charles Dean gave the Scripture and sermon. He spoke from a number of passages on "What the Spirit says to the Churches".
25. Harry Vance led in singing, "Family of God".
26. Prayer Requests and Announcements: Speedwell Revival; November 19th Baptist Men @ Webster; Youthfest; Remember the Gideons and their work.

**ASSOCIATIONAL CALENDAR OF ACTIVITIES
2001-2002**

OCTOBER 2001

- Emphasis: Cooperative Program/Stewardship**
 2 Fruitland Baptist Bible Inst. Fall Quarter Begins
 8 **Executive Committee Meeting, 7:30 pm, Baptist Ctr**
 14 World Hunger Day
 18 **Associational Annual Meeting, Buff Creek**
 19 **Associational Annual Meeting, East Fork**
 12-13 Statewide Deacon/Spouse Retreat, Caraway
 12-13 RA Leadership/Challenger Training, Caraway
 19-21 International Student Conference, Ridgecrest
 26 **Pastor, Deacon, Spouse Fellowship**
 28 **Senior Adult Choir Practice, 2:30pm Baptist Ctr**
 28 Daylight Savings Time Ends

NOVEMBER 2001

- 4-10 Royal Ambassador Week
 5 Baptist Women's Day of Prayer
 8-9 Sunday School Conference, Fruitland
 11-18 Week of Prayer and Special Offering for North Carolina Baptist Children's Home
 12-14 Baptist State Convention, Winston Salem
 22 Thanksgiving Day (Office Closed 20th & 21st)
 25 **Senior Adults Choir Practice, 2:30 pm, Baptist Ctr**

DECEMBER 2001

- 2-9 Week of Prayer for International Missions and Lottie Moon Christmas Offering
 23 **Senior Adults Choir Practice, 2:30 pm, Baptist Ctr**
 25-26 **Office Closed for Christmas Holiday**
 14 Fruitland Baptist Bible Inst. Graduation

JANUARY 2002

- 1 **Office Closed for New Year's Day**
 7 **Executive Committee Meeting, 7:30 pm, Baptist Ctr**
 7-8 NC State Evangelism Conference
 25 **Pastor, Deacon, Spouse Fellowship**
 27 Baptist Men's Day
 27 **Senior Adults Choir Practice, 2:30 pm, Baptist Ctr**

FEBRUARY 2002

- 1-2 NC Baptist Missions Conference
 11-17 WMU Focus Week
 14 Valentine's Day
 24 Volunteers in Missions Day
 24 **Senior Adults Choir Practice, 2:30 pm, Baptist Ctr**

MARCH 2002

- 3-10 Week of Prayer for North American Missions and Annie Armstrong Easter Offering
 17 Eighteenth Annual Associational Singing
 18-22 Regional Church Administration Conferences
 24 **Senior Adults Choir, 2:30 pm, Baptist Ctr**
 29 Good Friday
 31 Easter Sunday

APRIL 2002

- 1 Office Closed for Easter Holiday
 6 Training for Associational S.S. Teams
 7 Daylight Savings Time Begins
 8 **Executive Committee, 7:30 pm, Baptist Ctr**
 13 Lad/Crusader RA Congress
 14 Cooperative Program Day
 26 **Pastor/Deacon/Spouse Fellowship**
 26-27 Disaster Recovery Expo, Caraway
 28 **Senior Adults Choir, 2:30 pm, Baptist Ctr**

MAY 2002

- 2 National Day of Prayer
 5-12 Week of Prayer and Offering for Baptist Hospitals
 12 **Mother's Day**
 18 State RA/Challenger Track Meet
 26 **Pastors and Church Staff Appreciation Lunch, Baptist Ctr**
 26 **Senior Adults Choir, 2:30 pm, Baptist Ctr**
 27 **Office Closed for Memorial Day**

JUNE 2002

TRUETT CAMP & YOUTH CONFERENCES

- 9 Christian High Adventure Begins
 11 Southern Baptist Convention
 16 Father's Day
 23 **Senior Adults Choir, 2:30 pm, Baptist Ctr**

JULY 2002

TRUETT CAMP & YOUTH CONFERENCES ALL MONTH

- 3 **Office Closed for Independence Day**
 8-13 World Missions Week at Caswell
 15 **Executive Committee 7:30 pm, Baptist Ctr**
 26 **Pastor, Deacon, Spouse Fellowship**
 28 **Senior Adults Choir, 2:30 pm, Baptist Ctr**

AUGUST 2002

- 2-3 Church Brotherhood Leadership Training, Caraway
 25 **Senior Adults Choir, 2:30 pm, Baptist Ctr**

SEPTEMBER 2002

- 2 **Office Closed for Labor Day**
 8-15 Week of Prayer & NC Missions Offering
 22 **Senior Adults Choir Practice, 2:30 pm, Baptist Ctr**

Director of Missions Report

Numbers and statistics are important, but they do not tell the whole story. In our Association Annuals there are many numbers. These numbers help us see trends like increases or decreases in vital areas of church life. I hope you will pay attention to the numbers. Find your church, see how things look by the numbers. Look at our Association as a whole. What do you think the numbers indicate? However, do not let the numbers tell you all you need to know. It is important to get readings on such things as a church's Spiritual health beyond the numbers. How is the attitude of your church? How well do your church members cooperate with one another, with your pastor and other churches? Are your people happy, joyful, and positive? Or, are they sad, depressed and negative? Do you really feel the presence of Christ, the Head of the Church? Or, are your services like business programs where the Lord seems absent?

Sometimes these characteristics are hard to measure. But, I believe just like family members can tell when their family is healthy; we can also tell when our churches and Association are healthy.

As I visit in the churches I find that the churches, people and pastors of our Association are in fairly good health. Yet, as I am made aware of the many lost and unchurched of our community and world, I have to wonder why we are not making any more of a difference on the side of the Lord than we are. I have been told that 80% of our churches have declined in N.C.

I do not want my report to be dismal and negative. I am very thankful and excited about so much we are doing "together with God". Yet there is a "but" in my sentence. **But**, we have far too many of our churches that are arguing and complaining among themselves. **But** we seem to be slipping in our vision of missions and evangelism. **But**, we are too turned inward on ourselves when there are thousands "out there" around us who know not the joy of our Lord. Christ has a vast army of people and resources in this county. As we continue to work and pray, let us move forward and onward with Him as "Christian Soldiers going forth to war." Our country is at war with "terrorism" yet, at the same time our churches and Christians are at war with Satan and his forces. May the people of this country and all over the world see us as Southern Baptists fighting together to win the battles of our Lord as we march "neath the banner of the cross."

SUMMARY REPORT FOR THE YEAR

Churches Visited	64	Other Meetings:	
Times Preached	51	Speaking in Rest Homes	3
Revivals Held	1	Speaking in Nursing Homes	3
Counseling Sessions	8	Attending Camp Meetings	3
Committee Meetings	15	Speaking in Haywood Assoc.	1
Minister's Conferences	3	Veterans Memorial	1
Associational Meetings	16	Tax Seminar	1
Denominational Meetings	9	Miles Traveled	<u>7,102.2</u>
Weddings	1		
Funerals	7		
Mission Studies	2		

Nominating Committee Report, 2001-2002

General Officers

Moderator	Mike Dellinger
Vice Moderator	Clemmy Queen
Clerk	Amanda Bialy
Assistant Clerk	Betty Greene
Treasurer	Jesse Flake
Assistant Treasurer	Jo Medford
Historian	Joyce Crowder & Ann Cabe
Parliamentarian	Robert Blanton
Assistant Parliamentarian	Al Cauley

Program Leaders

Sunday School Director	Dennis Ensley
Discipleship Director	Roy Burnette
Music Director	Harry Vance
Musician	Janice Burnette/Betty Greene
Seminary Extension Director	Jim Dean
Trustees	Arnold Buchanan (04) Junetta Pell (02) Irene Hooper (03)
Youth Director	Joshua Hyde & Amanda Dills
Stewardship Director	Gerald Morris
Vacation Bible School Director	Betty Greene
Brotherhood Director	Lindon Allen
Senior Adult Director	Eloise Shuler
Singles Ministry Director	Eric & Norma Lovedahl

Associational Representatives

Truett Camp	James Haskett
Baptist Children's Homes of NC	Mike Moses
NC Baptist Hospital, Inc.	Gene Middleton
Baptist Retirement Homes of NC, Inc.	Frank Crawford
Biblical Recorder	Ronnie Henderson
Christian Higher Education	Steve Jamison
Annuity Board	Cecil Frady

Respectfully submitted by:

Joyce Crowder, Chair
Arnold Buchanan
Velma Plemmons
Debbie McDonald
Ann Cabe
Clyde Vance
Charles Carnes
Claude Conard, Ex Officio

Committee on Committees Report 2001-2002

Articles & By-Laws

- 02 Robert Blanton, Deitz Memorial
- 03 Tom McClure, Scotts Creek - Chair
- 04 Jim Cowan, Webster

Associational Missions Development Council

- 02 Dean Stephens, Black Mountain
- 03 Shirley Kool, Sylva 1st - Chair
- 03 Norma Lovedahl, Tuckasegee

Building & Grounds

- 03 Arthur Stephens, Moses Creek
- 03 Harold Wilkey, Long Branch - Chair
- 04 Eddie Pittman, Ochre Hill

Credentials

- 02 Keith Ashe, Zion Hill
- 03 Wilma Cospers, Cullowhee
- 03 Bruce Stiles, Dicks Creek
- 04 Cecil Frady, Lovedale - Chair
- 04 Bill Ansley, East Sylva

Evangelism

- 02 Kent Lowdermilk, Little Savannah
- 03 Rich Peoples, Scotts Creek - Chair
- 04 Steve Alexander, New Savannah
- 04 Terry Wehunt, Ochre Hill
- 04 Matt Ledbetter, Hamburg

Finance

- 02 Betty Blanton, Sylva 1st - Chair
- 03 Barbara Henderson, Pine Creek
- 04 Jo Medford, East Sylva
- 04 Terry Wilson, Webster
- 04 Mike Moore, New Hope
- Jesse Flake-Treasurer

Memorials

- 02 Hazel Monteith, Lovedale - Chair
- 02 Mildred Harris, New Hope
- 04 Janice Burnette, Jarrett Memorial

Appointed Committee 2001

Resolutions Committee

- Steve Jamison, Shoal Creek - Chair
- Steve Bialy, Greens Creek
- Dawn Shropshire, Webster

Nominating

- 02 Ann Cabe, New Savannah
- 02 Arnold Buchanan, Hamburg
- 03 Clyde Vance, Sylva First - Chair
- 03 Velma Plemmons, East Sylva
- 03 Debbie McDonald, Tuckasegee
- 04 Bob Parker, Lovedale
- 04 Grover Cabe, Calvary

Order of Business

- 02 Ray Buchanan, Jarrett Memorial - Chair
- 02 Dean Coward, Balsam
- 04 Dan Bryson, Liberty

Ordination

- 03 Roger Stewman, Black Mtn
- 03 John Swanger, Balsam
- 03 Gene Hawkins, Faith - Chair
- 04 Al Cauley, Lumberton
- 04 Randy Hyatt, Rockdale

Personnel

- 02 Jim Hage, Scotts Creek
- 02 Betty Cogdill, Buff Creek
- 03 Don Shuler, New Hope
- 03 Art Fowler, Cashiers
- 03 Steve Jamison, Shoal Creek - Chair
- 03 Gene Hawkins, Faith
- 04 Allen Garner, Greens Creek

Place & Preacher

- 02 Mark Haskett, East Sylva - Chair
- 04 Jim Ashe, Scotts Creek
- 04 Chas Mathis, Mt. Pleasant

Respectfully Submitted, Steve Jamison, Chair,
Avery Brown, Arthur Stephens, Jennie Miller,
Mildred Wilson, & Claude Conard, Ex Officio

Appointed Committee 2001-2002

Committee on Committees

- Art Keener, Webster
- Mark Haskett, East Sylva
- Joe Pressley, Cullowhee Valley
- Stella Parker, Tuckasegee
- Matt Ledbetter, Hamburg

Executive Committee Report **Amanda Bialy, Clerk**

October 2, 2000 - The Association met at the Baptist Center for the regular quarterly meeting. There were 30 members and 4 visitors in attendance, representing 14 churches. Moderator Tom McClure presided. Roy Burnette led in singing of hymns. Bobby Locklear, Pastor of Mount Pleasant Baptist Church, gave the devotion. The following reports were given; Director of Missions, Clerk, Treasurer, Senior Adults, and WMU. After announcements and prayer the meeting was adjourned.

January 8, 2001 - The Association met at the Baptist Center for the regular quarterly meeting. There were 34 members and 9 visitors in attendance, representing 17 churches. Moderator Mike Dellinger presided. Robert Palmer led in singing of hymns. Lester Sutton, Interim Pastor, Hamburg Baptist Church, gave the devotion. The following reports were given: Director of Missions, Clerk, Treasurer, Discipleship Training, Senior Adults, WMU and VBS. Claude Conard read an invitation from West Care to a reception for the new Hospital Chaplain, Ron Allen. He also presented a cooperative agreement for funds to supplement the budget. REACH had referred a client to the Association and that request was referred to the Mission Committee. Gene Middleton reported on the Mull Family Project. Shirley Kool presented a request from Cheoah/Tennessee River Association for \$5000.00 to help pay for purchase of a building to house the Associational Office, SWARM and other offices. A motion was made to use Annie Hoyle Endowment to help our sister Association. The motion was passed. The Building & Grounds Committee invited Danny Foxworth to report on the termite problem in the Baptist Center. A motion was made to refer the termite problem to the Building & Grounds Committee and authorize them to do "whatever it takes" using funds from Annie Hoyle Endowment. The motion was passed. After announcements and prayer the meeting was adjourned.

April 2, 2001 – The Association met at the Baptist Center for the regular quarterly meeting. There were 32 members and 4 visitors in attendance, representing 18 churches. Moderator Mike Dellinger presided. Harry Vance led in singing of hymns. Al Cauley gave the devotion. The following reports were given: Director of Missions, Clerk, Treasurer, Music, Senior Adults, WMU. John Reid presented a video on the Mull Family Project. Steve Bialy shared some details about the Jesus Film Project. Joyce Crowder presented the nominating committee report and recommended Robert Blanton to replace Ed Beddingfield as parliamentarian and Jim Haskett to replace Lewis Keener as representative for Truitt Camp. The motion was approved. Steve Jamison presented the Committee on Committee's report and made a motion that Arnold Buchanan replace Irv Booth on the nominating committee. The motion passed. Steve Bialy made a motion from the Place & Preacher committee to change the date of the Annual Meeting to October 18th and 19th. The motion passed. After announcements and prayer the meeting was adjourned.

July 9, 2001 – The Association met at the Baptist Center for the regular quarterly meeting. There were 26 members and 8 visitors present, representing 15 churches. Vice-Moderator Clemmey Queen presided. Robert Palmer led in singing hymns. Steve Alexander, Interim Pastor of New Savannah Baptist Church gave the devotion. The following reports were given: Director of Missions, Clerk, Treasurer, WMU. A motion was made to authorize Rich Peoples and Steve Bialy of the Evangelism Committee to form a steering committee for distribution of the Jesus video in Jackson County. The motion passed. Representatives from the American Cancer Society presented a video on Relay for Life. Steve Jamison made a motion to appoint Gene Hawkins to complete the term vacated by Larry Perry on the Committee on Committee's. The motion passed. After several announcements and prayer the meeting was adjourned.

Messengers List

Balsam:

Big Ridge:

Black Mountain: Lebern Dills, Amanda Dills, Wanda Dills, Dean Stephens, Mary S. Stephens

Buff Creek : Gracella Morris, Rev. Gerald Morris, Ted Mull, Eloise P. Shuler

Calvary: Audrey Allison, Jackie Buchanan

Cashiers:

Cullowhee: Wilma Cosper Alt., Charles Hill, Pam Hill, Elmer Hooper Alt., Irene Hooper Alt., Eric Lovedahl, Norma Lovedahl, Lora Ponder Alt., Hoyt Ponder Alt., Baxter Wood, Sue Wood

Cullowhee Valley: Elaine Haskett, Roy Haskett, Carolyn Taylor, Rev. Terry Taylor

Deitz Memorial: Edith Blanton, Rev. Robert Blanton, Cleatus Deitz, Grover Deitz

Dicks Creek : Willis Brown, Gail Clawson, Sylvia Dobicey, Kathy Stiles

East Fork : Ray Ashe, Ruth Ashe, Dusty Destefano Alt., Norma Lou Destefano Alt., Carolyn S. White, Ashley Wood, Katie Wood

East Sylva: Rev. Charles Dean, Rev. James Dean, Dennis Ensley, Lois Ensley, Kathy Farmer, Mike Farmer, Betty Fisher, Tommy Fisher, Bud Plemmons Alt., Velma Plemmons Alt., Nelda Reid, John Reid

Faith: Mary Bennett Alt., Rev. Gene Hawkins, Robert Palmer, C.L. Proffitt

Greens Creek: Rev. Steve Bialy, Amanda Bialy, Allen Garner, Jo Ann Garner, Barbara Green

Hamburg: Arnold Buchanan, Jeff Davis, Lana Ledbetter, Rev. Matt Ledbetter; Judy Smathers, Tom Smathers, Viola Bryson

Hyatts Chapel: Louphelia Gunter, Kent Moore, Lisa Moore, Jane Ward, Delbert Webb, Geraldine Webb

Jarrett Memorial: Audrey Buchanan, Ray Buchanan, Rev. Roy Burnette, Betty Dean, Keith Dean, Perry Sutton

Liberty:

Little Savannah: Evelyn Frizzell, Kenny Frizzell, Rev. Kent Lowdermilk, J.E. Wheatley, Mary Ann Wheatley

Locust Field: Betty Greene, Donna King, Doris Melton Alt., Chuck Norris, Virginia Pangle Alt., Waymon Pangle

Long Branch: Ronnie Amster, David Dalton, Roy Dalton, Steve Lillard

Lovedale: Steve Allen Alt., Ruth Crowe, Jean Frady, Rev. Cecil Frady, Hazel Monteith, Freda Queen

Lumberton: Gladys Cauley, Fred Houston, Susan Moore, Rev. Al Cauley

Moses Creek: Alvin Bauer, Carol Bauer, Arthur Stephens, Roger Stephens, Martha Stephens

Mt. Pleasant:

New Hope: Rev. Emery Brooks Alt., Steven Buchanan Alt., Jack Buchanan, Lee Ensley Alt., Mildred Harris, Earl Hooper Alt., Rev. Mike Moore, Donald Morrison, Margie Morrison, Rev. Hardin Nicholson, Rev. Clemmy Queen, Sadie Shook, Donal Shuler, Faye Taylor Alt., Jemina Tucker, Walter Young Alt.

New Savannah: Kathy Alexander, Rev. Steve Alexander, L.D. Queen, Sara Queen

Ochre Hill: Harry Dillard, Alvin Hall, Mary Hall, Rev Terry Wehunt, Pat Wehunt

Old Savannah:

Pine Creek:

Promise Land:

Rockdale: Lindon Allen Alt., Rev. Randy Hyatt, Floyd Tatum, Irene Brooks, Buddy Brooks, Doug Denny

Scotts Creek: Debbie Hage, Jim Hage, Renee Peoples, Rev. Rich Peoples, Darlene Seay, Audrey Ward, Rev. Dan Ward

Shoal Creek: Rev. Steve Jamison, Esther Cole, Ronnie Henderson Alt., Jean Bushyhead, Harold Bradley

Sols Creek:

Speedwell: Billy Stiles, Dennis Coggins, Michael Coggins, Charles Wilkes, Ida Mae Wilkes

Sylva First: Hattie Allison, Betty Blanton, Frank Crawford, Othello Crawford, Sara Davis, Donna Depew, Rev. Chris Ehrlich, Pat McMillan, Ray McMillan, Gene Middleton, Inez Smith, Barbara Vance, Clyde Vance

Tilley Creek:

Tuckasegee:

Unity:

Webster: Tom Collins, Rev. Mike Dellinger, Ann Hall, Leroy Hall, Art Keener, Nell Keener, Dawn Shropshire

Wilkesdale: Evelyn Barnes, Jim Barnes, Frankie Dean, Christine Painter

Zion Hill: Kenneth Bishop, Fred Milkey, Keith Ashe, Christy Ashe

Pastor, Deacon, and Spouse Fellowship

The Pastor, Deacon, and Spouse Fellowship of the Tuckaseegee Baptist Association met four times from October 2000 through July 2001.

The first meeting was held at New Hope Baptist Church, October 27, 2000. The ladies of the church served a delicious meal. Art Keener, Chairman, gave the opening prayer and welcomed the attendees. Harry Vance led the congregation in the opening hymn, "Leaning on the Everlasting Arms." Irene Hooper, Secretary, read the minutes of the July 28, 2000 meeting and they were approved as read. Roll call was taken, with 53 persons in attendance, representing ten churches. Due to the absence of the Treasurer, no financial report was available. An offering of \$98.00 was received for the evening.

The Pastor of New Hope, Reverend Mike Moore, gave the evening message entitled, "The Wonder of Wonders," using Acts 3 as his text. He observed that the wonder of wonders is the good news that Jesus Christ came to earth, lived, and died for our sins and that Christ will save us for eternity. Reverend Moore's message discussed unification, magnification, and glorification. Reverend Moore pointed out that while Peter and John were very different, they cooperated and served together. The day of Pentecost brought them together and unified them. We are to seek to magnify the name of Christ. Peter and John introduced the lame man to Jesus. We must introduce Christ to the world. The reverend Moore also pointed out that glorification is more than just praising Jesus. Something has to take place in one's heart for true glory to occur. By our joy we glorify Jesus.

The Reverend Claude Conard, the new Interim Director of Missions, and his wife were recognized. It was announced that the association has a new secretary, Amanda Bialy. Also that Dr. Harold Anderson has been named the interim Pastor at Cullowhee. Reverend Mike Moore announced that the Reverend Roy Kilby would lead New Hope in revival services, beginning the next Sunday and continuing through the following Wednesday. Following announcements, the meeting closed with prayer by Brother Proctor.

The second meeting was held January 26, 2001 at East Sylva Baptist Church. Following a delicious meal, Haven Ensley conducted the meeting. Twelve churches were represented with 68 persons in attendance. Harry Vance led the congregational hymn, "Down at the Cross." A special tribute was paid to Burt Moses, 96 years old, for continuing to be a faithful servant and serving as a volunteer at Harris Regional Hospital.

The Reverend Charles Dean, Pastor of East Sylva Baptist Church, welcomed the group and gave the devotion entitled, "The Return of Jesus," reading from Matthew 24. "Watch therefore, blessed in His service till He comes."

The minutes of the October 27, 2000 meeting were read and accepted. The Treasurer presented the Financial Report, showing a balance of \$1,118.51. In new business, four visitors from Woodfield, Ohio were introduced and welcomed. Harry Vance announced that the Association Annual Singing would be held the 3rd Sunday in March and encouraged churches to consider acting as hosts. It was announced that the Senior Adult Valentine Luncheon would be held on February 9, 2001.

The Reverend Ed Beddenfield introduced the speaker for the evening, Reverend Luther Osmont, Director for North Carolina Retirement Homes. Reverend Osmont, a beloved and respected member of Sylva First Baptist Church, gave an interesting talk on his work with the aging population in the Retirement Homes. He stated that North Carolina has a large and increasing population of persons 85 years and older. In fact, the Winston Salem Home has a 90 years and over club. People are living much longer and are faced with health challenges. After admission to a home, the individual is taken care of for life, even if their finances run out. Three percent of the population between the ages of 65-74 have Alzheimer Disease and 47 percent of those 85 years and older have some form of Dementia. A new facility is being built in Asheville. Reverend Osmont's mother has Alzheimer and he closed by stating that his mother doesn't know him but "The Father knows us - His children - and he does care."

The meeting closed with prayer and singing of "Amazing Grace."

Lovedale Baptist Church hosted the April 27, 2001 meeting. The ladies of the church provided a delicious meal of ham, vegetables, and desert in the fellowship hall prior to the meeting. Art Keener, Chairman, welcomed the attendees. Harry Vance led the opening song, "Blessed Assurance." The Pastor of Lovedale, the Reverend Cecil Frady, gave a devotion based on John 4:19. He spoke of the Church of God as a big family. He told us that we are to worship in spirit and truth - that Jesus Christ is to be lifted up. It will require cooperation, love and prayer to make Him first in our lives.

Haven Ensley gave the opening prayer, with special requests for the Reverend Mike Dellinger, Dot Revis, and Jean Painter. The congregation then sang, "I must tell Jesus." Minutes of the January 26 meeting were read and approved. The treasurer, Roy Haskett, reported that the account balance was \$1,061.18. He also announced that

Bibles would be purchased in memory of Deacons Andrew Wilson from Mount Zion Baptist and Harry Mason, Scotts Creek Baptist, who had recently passed away. There were 70 persons in attendance, representing 14 churches. The evening offering was \$110.

The chairman appointed a Nominating Committee with Haven Ensley as chair, Dennis Ensley, and Robert Hernandez, to nominate new officers for the coming year. They were to report at the July meeting. It was announced that the Reverend Bill Sutton, as a tribute to his deceased wife, was promoting the "Jesus Film," with the intent to place a copy in each household in Jackson County. Over \$6,500 has been raised to date with a goal of raising \$21,000 more.

Dean Stephens, Program Chairman, introduced the Lovedale Choir, led by Eddie Potts, who presented the evening's program in song. Songs included, Walking on Heavens Road, Thank God, I'm Free, Washed in the Blood, and The Life Boat is Coming. Jim Haskett's group closed the evening program with "Amazing Grace."

The meeting adjourned with a prayer by Reverend Al Cauley.

The last meeting of the year was held at Webster Baptist Church on July 27, 2001 with 41 persons, representing 10 churches present. The host church provided a delicious meal prior to the meeting. Art Keener, Chairman, welcomed those attending. Harry Vance led the attendees in the opening hymn, "We are Marching to Zion." The Reverend Mike Dellinger, Pastor of the host church, gave a devotion on ministry, using Matthew 16:26 as his text. "For what has a man profited if he shall gain the whole world and loose his own soul? Or what shall a man give in exchange for his soul." Reverend Dellinger stated that a hundred years from now it won't matter if we bought a new car, took a trip or bought a new home. However, it will matter if we won someone to Christ. "A recent survey of the U.S. population shows we have 32 million young people and 28 million of those are lost. To whom are we passing the baton of faith?" Reverend Dellinger closed by asking, "Whose life did you make a difference in this week? What life did you touch?"

Minutes of the April 27, 2001 meeting were read and approved. Roy Haskett, Treasurer, reported a balance of \$1,449.87. He stated that he will provide Bibles in memory of Deacons Ronnie Henderson and Troy Gunter, who recently passed away. The offertory hymn, "Send the Light," was sung and an offering of \$100 was received. Dennis Ensley gave the Nominating Committee's report and a vote was taken. Officers elected for the year were Art Keener, Chairman; Dean Stephens, Program; Irene Hooper, Secretary; Roy Haskett, Treasurer, and Harry Vance, Song Leader. A candidate for Time and Place had tentatively accepted but the Nominating Committee had not received confirmation, therefore, the committee was requested to provide a nomination at the October 2001 meeting.

Pastor Dellinger introduced the speaker for the evening, Josh Hyde, a member of Webster Baptist Church who has been called to preach. Josh and others from Webster Baptist had just returned from a mission trip to New York. Josh spoke on missions, using Acts 1:8-11. "You shall receive power, you shall be my witnesses beginning at home and around the world." Josh stated that, "We are to be witnesses for Christ. Our mission trip to New York has ended but missions continue." He challenged each person by saying, "Go and share what Jesus Christ has done for you and what he has done for others. Have a burden for the lost."

Harry Vance made a motion to give Josh Hyde \$100 to help with his tuition at Fruitland Baptist Bible Institute. The motion was approved. The money was presented, along with the promise to pray for his preparation for the ministry.

The meeting adjourned with a closing prayer by Claude Conard, Interim Associational Director. Throughout the year, the Pastor, Deacon, and Spouse Fellowship meetings were blessed with good attendance and fellowship. Let's pray that the next year will be even better.

Respectfully Submitted,
Art Keener, Chairman

Music Report 2001

We have had another good year in music in our churches for the year 2001. Let us always remember the Bible says "May a joyful unto the Lord." "Come before His presence with singing."

The following is the report of our March 18, singings. The Host churches did a wonderful job and each had a great report to give. The offering, again, was given for the ministry of The Broyhill Children's Home. We are planning for another great time in 2002.

JARRETT MEMORIAL, Host

Long Branch
Locust Field
Rockdale
Dicks Creek

Attend: Offering
170 \$245.76

LOVEDALE, Host

Sylva First
Webster
Shoal Creek
Greens Creek

Attend. Offering
140 \$321.15

OCHRE HILL, Host

Scotts Creek
Buff Creek
East Sylva

Attend. Offering
300 \$332.55

SPEEDWELL, Host

Black Mountain
Promise Land
Calvary
Cullowhee Valley

Attend. Offering
125 \$252.00

TOTALS:

Attendance: 735
Offering. \$1143.91

Harry D. Vance
Music Director

PLACE & PREACHER REPORT:

Annual Meeting October 17th & 18th, 2002

Thursday, October 17th - Hamburg Baptist Church.....Mike Dellinger, Speaker
Brian Bishop, Alternate
Friday, October 18th - Greens Creek Baptist Church.....Terry Wehunt, Speaker
Steve Bialy, Alternate

Senior Adult Report

October 19, 2000

Our Senior Adult Choir sang at Buff Creek Church during their Revival. We had 18 members present with 11 churches represented.

November 2, 2000

We sang at Jarrett Memorial Church during their Revival with 16 members present and 10 churches represented.

December 15, 2000

We had our Christmas Party at the Baptist Center. We had 21 present with 12 churches represented.

February 9, 2001

We met at the Baptist Center for our Valentine Luncheon. We had 26 present and 12 churches represented.

March 15, 2001

Our choir went to Delwood Baptist Church in Haywood County to sing at their Senior Adult Meeting. We had 12 members and 9 churches represented.

May 7, 2001

Our Choir went back to Dellwood Church to sing during their Revival. We had 19 members present with 10 churches represented.

May 11, 2001

We had our Mother's Day program and lunch at the Baptist Center. We had 23 present with 12 churches represented.

June 27, 2001

We sang at Faith Baptist Church during their Revival. We had 15 members present with 9 churches represented

September 18, 2001

Our Choir sang at Lovedale Church at the Sunday School Rally by Fred Lunsford. We had 15 members present with 8 churches represented.

Sincerely,
Elaise Shuler

THE UNIVERSITY OF CHICAGO
DEPARTMENT OF CHEMISTRY
5800 S. UNIVERSITY AVENUE
CHICAGO, ILLINOIS 60637
TEL: 773-936-3700

Dear Professor [Name],
I am writing to you regarding the [Topic] project.
I have reviewed the [Document] and find it very interesting.
I would like to discuss this further with you.
Please let me know when you are available for a meeting.
I am looking forward to hearing from you.
Sincerely,
[Name]

Yours truly,
[Name]

VACATION BIBLE SCHOOL

Betty Greene, Director

The Associational Bible School Team began early in January, 2001, to prepare the Sunday School curriculum, Lifeway. On April 8, 2001, the Association VBS team did a Clinic Setup, at the Baptist Center, for viewing, using Lifeway material. Since some of the churches in our Association use various curriculums, we also had a number of other companies material for viewing.

Members of this years team were: Irene Hooper, Virginia Pangle, Betty Greene, Geraldine Jones and Dora Wike. We were blessed and inspired by having six churches and Mountain Trace Rest Home use all or a part of our clinic setup.

On April, 21, 2001, our Associational VBS team, did a clinic for The Tennessee River Association, using Lifeway material. We were the first Mission Group to use their new Associational Building. I also had the opportunity to speak at their annual Associational spring meeting, on Lifeway material.

Bible School for Children is like Revival for Adults, VBS is one of the greatest opportunities to reach children who never attend church, with the gospel.

Remember Isaiah 55:10-11.

For as the rain cometh down, and the snow from heaven, and returneth not thither, but watereth the earth, and maketh it bring forth and bud, that is may give seed to the sower, and bread to the eater, so shall my word be that goeth forth out of my mouth; it shall not return unto me void, but it shall accomplish that which I please, and it shall prosper in the thing where to I sent it.

The Woman's Missionary Union of the Tuckaseegee Baptist Association carried out the theme:
BEYOND BELIEF! in all WMU events of the year.

Objectives:

1. *WMU will challenge its members to go beyond the ordinary in their relationship with God and others.*
2. *WMU will lead the church to anticipate and participate in the awesome works of God in their communities and around the world.*

Watchword: "Now to him who is able to do immeasurably more than all we ask or imagine, according to his power that is at work within us, to Him be glory ...for ever and ever! Amen" (Eph. 3:20-21 NIV).

As we look back on this past year we can clearly see that God has been at work in and through us, sometimes "beyond belief" and beyond the ordinary.

OCTOBER: Observed world hunger day, fasting, praying and giving to the World Hunger Relief Fund. Shirley Kool presented a program on her second mission trip to Nanning, China. What a blessing we received and the assurance that God continues to open doors for witnessing.

NOVEMBER: Baptist Women's Day of Prayer was observed Nov. 6th, 2000 at the Baptist Center. Churches & organizations are filling shoe boxes for needy children around the world, "Operation Christmas Child".

DECEMBER: International Missions Study was held at Sylva First. Theme: "Dispelling the Darkness in Turkey". Bob Satterfield shared the nature of his work in Turkey. He touched our hearts and brought us to tears as he told about the earthquake of 1999 that left hundreds homeless. God used this disaster to open doors for volunteers, including Southern Baptists; God is moving among the people of Turkey.

FEBRUARY: During WMU Focus Week we sponsored a Volunteer Missions Fair held at Webster Baptist Church. Our theme: "People helping People". 19 Churches had displays showing the many ways God has been at work through them. Each church sponsored an agency or organization to make us aware of the many mission opportunities in our country that we can be a part of: "people helping people".

MARCH: Sandra James led our North American Mission Study, "My Purpose, His Plan". Theme: On Mission Together. "Two are better than one, because they have a good reward for their labor (Ecc.4:9). March 4-11 "Week of Prayer" was observed for North American Missions. Churches were encouraged to set a goal for Annie Armstrong Easter Offering. National Goal: \$50,000,000.

APRIL: WMU Annual Meeting was hosted by Cullowhee Baptist Church. The meeting began with a salad supper. Irene Hooper, WMU Director, gave a warm welcome to the WMU members and guests, shared a wonderful mission story and opened with prayer. During the business session the book of reports was adopted. Sandra James, our speaker for the evening, shared mission stories that were truly, "beyond belief". But we know nothing is impossible with God. We were truly blessed and challenged to let God use us this year as we seek to serve and do missions. In closing, Jeanie Cessna sang, "Surely the Presence of the Lord is in this Place" and He was.

The following were elected to serve as the leadership team for 2001-2002.

Co-Directors: Lois Ensley & Nelda Reid

GA/CIA Cnslt.: Lisa Dean

Asst. WMU Director: Sara Davis

Asst. GA/CIA Cnslt.: Merry Broughton

Women on Mission Cnslt.: Janice Burnette

Mission Friends Cnslt.: Geraldine Jones

Asst. Women on Mission Cnslt.: Viola Bryson

Asst. Ms. Frnds. Cnslt.: Wanda Mills

Secretary/Treasurer: Hazel Monteith

Missions Inv. Cnslt.: Brenda Buchanan

Acteens Cnslt.: Lana Ledbetter

Asst. Ms. Inv. Cnslt.: Virginia Pangle

MAY: The WMU's prepared a meal for pastors, staff and their families to show our appreciation and support for their dedicated work in our association. Special music and congregational singing was led by Rev. J.E. Smith, pastor of Liberty Baptist Church.

JUNE: Our women were teaching Bible School, going on mission trips, growing vegetables to share, taking care of their families, and going on vacations. They are always on mission for God.

JULY: The leadership team attended a training conference at Fruitland Baptist Bible Institute. "God always has something new to teach us."

AUGUST: "Missions on the Move" was the theme of our Associational Leadership Training held at East Sylva Baptist Church. Women were challenged to "move out, move on, and move up" as they attended classes for each age level taught by the leadership team. A video, "Mobilizing Baptist for Ministry" was shown during the opening session. Each church was encouraged to promote the NC Missions Offering and observe the week of prayer, September 9-16. WMU receives it's funds from this special offering.

Listed Below are a few of our Mission Involvement Projects:

AWAKE: Copier Paper & Supplies

REACH: Donated clothes

HABITAT for HUMANITY: Workers & Donations

SAMARITANS PURSE: "Operation Christmas Child" filled 1,170 shoe boxes for needy children; six of our women worked at the collection site in Waynesville.

UNITED CHRISTIAN MINISTRIES: Provided food for Thanksgiving and Christmas Baskets

GHANA BANDAGE PROJECT: Rolled hundreds of bandages for the Baptist Hospital in Ghana (using old sheets).

CAMPBELL SOUP LABELS: Sent 1700 to home missionary, Jack Little, Charleston, SC (he can redeem these for a van to use in his mission work).

RED CROSS: Promoted Blood Drives

BAPTIST CHILDREN HOMES: School supplies

BAPTIST RADIO HOUR: Donations

PROJECT HELP: LITERACY: Teaching adults to read; donation of \$1.00/month to verizon reads literacy program through our phone bill.

BABY CAPS: Our women have furnished over 1,000 baby caps for the newborns at Harris Regional Hospital, also served as volunteers.

"For we are labourers together with God" 1 Corinthians 3:9

Our mission friends, GA's, CIA's, Acteens and Youth are learning about missionaries, their work and our need to pray for them. They are developing a love and concern for others as they take part in the many mission opportunities in our county. Many lives have been blessed and changed because you care enough to reach out to those in need. I pray you have discovered the joy of missions.

Report Prepared by:

Lois Ensley

Associational WMU Director

TUCKASEIGEE BAPTIST ASSOCIATION PROPOSED BUDGET, 2002

	Expenditures to Date 8/31/01	Actual Expenditures 2000	2001 Orig. Budget	Rec. Budget 2002	Increase/ (Decrease)
I. MISSIONS OUTREACH					
Disaster Relief	0.00	200.00	200.00	200.00	
Handyman Ministries	0.00	200.00	200.00	200.00	
Missions Council	0.00	50.00	50.00	50.00	
S.W.A.R.M.	0.00	150.00	150.00	150.00	
Hosp. Chaplaincy Fund	0.00	100.00	100.00	100.00	
Camp Truett	0.00	100.00	100.00	100.00	
II. ORGANIZATIONAL MINISTRIES					
Office Supplies	530.98	1,019.02	800.00	1,000.00	200.00
Postage	814.68	1,102.89	1,250.00	1,250.00	
Conference & Conv.	0.00	0.00	100.00	100.00	
Sunday School	0.00	0.00	100.00	100.00	
Church Training	0.00	0.00	75.00	150.00	75.00
Youth	0.00	0.00	150.00	300.00	150.00
VBS	256.51	226.72	250.00	250.00	
Evangelism	0.00	0.00	50.00	50.00	
Senior Adults	48.74	15.80	150.00	150.00	
Singles Ministry	0.00	0.00	150.00	150.00	
Music	80.30	76.45	75.00	100.00	25.00
III. PROPERTY SUPPORT MINISTRIES					
Property Insurance	1,113.00	1,088.00	1,100.00	1,125.00	25.00
Telephone	549.35	804.77	1,000.00	1,000.00	
Electricity	785.70	1,406.40	1,620.00	1,620.00	
Office Equip & Repairs	945.00	1,226.04	1,250.00	1,250.00	
Bldg/Gmnds Maint/Upkeep	688.51	1,253.97	1,150.00	1,450.00	300.00
Ministry Expense Reimburse.	1,739.93	1,844.69	3,600.00	3,600.00	
IV. EQUIPPING MINISTRIES					
Assoc Leader Train	100.00	12.35	100.00	100.00	
Library & Audiovisuals	0.00	37.08	50.00	50.00	
V. PERSONNEL MINISTRIES					
Director's Salary Package	0.00	0.00	6,207.00	5,365.00	(842.00)
Interim Director Salary	9,360.00	8,437.50	14,040.00	14,532.00	492.00
Soc. Sec./Med. Allow.	716.00	645.00	1,074.00	1,113.00	39.00
Secretary	4,880.00	7,442.69	7,320.00	7,584.00	264.00
Retirement (Secretary)	488.00	689.25	732.00	759.00	27.00
Matching Soc. Sec.	373.28	581.46	560.00	580.00	20.00
Hon. for Treasurer	0.00	200.00	200.00	200.00	
Hon. for Clerk	100.00	200.00	200.00	200.00	
VI. MISCELLANEOUS					
Assoc. Minutes	270.41	300.00	300.00	300.00	
Pastor Apprec Dinner	0.00	0.00	50.00	50.00	
Exec Comm Refresh	0.00	11.86	30.00	30.00	
Miscellaneous	300.00	166.38	311.00	316.00	5.00
TOTAL	24,140.39	29,588.32	44,844.00	45,624.00	780.00
From Cash Balance					
RECEIPTS	33,181.38	41,418.41	44,844.00	45,624.00	780.00
Change in Cash Balance	9,040.99	11,830.09	0.00	0.00	0.00
Beginning Cash Balance	51,624.30	39,794.21	51,624.00		
Ending Cash Balance	60,665.29	51,624.30	51,624.00		

TUCKASEIGEE BAPTIST ASSOCIATION
FINANCIAL INFORMATION SUMMARY

EXPENDITURES; Oct. 2000 - Sept. 2001

Receipts; Oct. 2000 - Sept. 2001

I. MISSIONS OUTREACH	
Disaster Relief	200.00
Handyman Ministries	200.00
Missions Council	50.00
S.W.A.R.M.	0.00
Hosp. Chaplaincy Fund	0.00
Camp Truett	0.00
II. ORGANIZATIONAL MINISTRIES	
Office Supplies	1,058.53
Postage	1,434.86
Conference & Conv.	0.00
Sunday School	0.00
Church Training	0.00
Youth	0.00
VBS	256.51
Evangelism	0.00
Senior Adults	48.74
Singles Ministry	0.00
Music	80.30
III. PROPERTY SUPPORT MINISTRIES	
Property Insurance	1,113.00
Telephone	808.96
Electricity	1,128.83
Office Equip & Repairs	1,260.00
Bldg/Grnds Maint/Upkeep	946.34
Ministry Expense Reimburse.	2,600.66
IV. EQUIPPING MINISTRIES	
Assoc. Leader. Training	100.00
Library & Audiovisuals	8.48
V. PERSONNEL MINISTRIES	
Director's Salary Package	0.00
Interim Director Salary	13,905.00
Soc. Sec/Med. Allow.	1,063.50
Secretary	7,545.69
Retirement (Secretary)	726.00
Matching Soc. Sec.	577.20
Hon. for Treasurer	200.00
Hon. for Clerk	200.00
VI. MISCELLANEOUS	
Assoc. Minutes	414.46
Pastor Apprec. Dinner	0.00
Exec. Comm. Refreshments	0.00
Miscellaneous	362.36
TOTAL (Budgeted)	\$36,289.42
Beginning Balance; 10/01/2000	\$51,596.66
Receipts; 10/1/2000 - 9/30/2001	45,618.33
Expenditures; 10/1/2000 - 9/30/2001	36,289.42
Ending Balance; 9/30/2001	\$60,925.57

Balsam	
Big Ridge	
Black Mountain	\$200.00
Buff Creek	1,200.00
Calvary	100.00
Cashiers	1,900.00
Cullowhee	450.00
Cullowhee Valley	180.00
Deitz Memorial	600.00
Dicks Creek	132.00
East Fork	600.00
East Sylva	750.00
Faith	1,210.48
Greens Creek	2,490.00
Hamburg	2,400.00
Hyatts Chapel	
Jarrett Memorial	900.00
Liberty	
Little Savannah	300.00
Locust Field	150.00
Long Branch	
Lovedale	1,998.62
Lumberton	400.00
Moses Creek	
Mt. Pleasant	240.00
New Hope	600.00
New Savannah	300.00
Ochre Hill	2,606.01
Old Savannah	
Pine Creek	
Promise Land	
Rockdale	360.00
Scotts Creek	6,887.35
Shoal Creek	1,800.00
Speedwell	360.00
Sols Creek	
Sylva First	8,400.00
Tilley Creek	
Tuckasegee	689.00
Unity	
Webster	960.00
Wilkesdale	580.11
Zion Hill	
TOTAL CHURCH	
SUPPORT	\$39,743.57
Interest	3,052.76
Baptist State Convention	2,822.00
Private Gifts/Memorials	0.00
Other/Designated Gifts	0.00
TOTAL RECEIPTS	\$45,618.33

Baptist Children's Homes of North Carolina

Baptist Children's Homes serves record number of children. In 2000, Baptist Children's Homes of North Carolina served a record 2,000 children and more than 1,600 families statewide. BCH operates residential campuses in Thomasville, Pembroke, Kinston and Clyde, a maternity home in Asheville, a teen mother/baby home in Lenoir, value change homes for boys and girls in Franklin and Asheville and for girls in Lenoir, a wilderness camp for boys in Cameron, emergency care cottages at each of the residential campuses and in Waynesville, and a model day care in Thomasville.

Children tell their stories during Baptist State Convention report. Standing ovations, applause and heartfelt hugs greeted the children and staff at their 30-minute presentation during the 2000 Baptist State Convention in Winston-Salem. More than 130 BCH children, child care workers and staff sang, shared their stories and said "thank you" to the approximately 4,500 messengers attending the Tuesday afternoon session. Messengers heard the special testimonies from Citadel graduating senior and former Broyhill Home resident Jason Davis and Hannah Adams' mother Donna. Hannah has participated in both the 2000 and 2001 BCH Respite Camp for Developmentally Disabled Adults.

Jason Davis thanks messengers. Jason was featured in the 1995 Baptist Children's Homes report to the convention. At that time he was 17 and dreamed of a career in the Air Force. During his testimony at the 2000 convention, Jason appeared in the full dress uniform of The Citadel. He reminded messengers that if it had not been for their care and support he could have never realized his dream. He told messengers that he credited them for the opportunities he has known. Jason said he plans to always come back to visit the children and just as others gave to help him, he would give to help the other children who would come to BCH after him. Upon his graduation from The Citadel in May 2001, Jason Davis was commissioned as a Lieutenant in the United States Air Force.

Donna Adams claims Developmental Disabilities Ministry an answer to prayer. The final testimony of the BCH presentation was not given by a child, but by a mother. Donna Adams of Laurinburg strained to maintain her composure as she shared how BCH's new ministry for developmentally disabled adults was the answer to her prayers. Adam's daughter Hannah suffered brain damage as an infant. Today, Hannah is a beautiful young woman. Donna said she is comforted in knowing North Carolina Baptists and the Baptist Children's Homes would be there as her family plan for Hannah's future. She thanked messengers on behalf of other parents and families of developmentally disabled children for their support and commitment to this ministry.

North Carolina Baptists reach \$1,000,000 Thanksgiving Offering goal. Because of the support of Baptist churches all across North Carolina, Baptist Children's Homes met the 2000 Thanksgiving Offering goal of \$1,000,000! The goal was record for the agency. BCH president Michael C. Blackwell said he was "enormously gratified at this outpouring response." Baptist Children's Homes is grateful to all North Carolina Baptists who committed themselves to help meet this challenging goal.

First Baptist Church of Salisbury sets goal they couldn't reach. Interim pastor Dr. Dale Steel said collecting a church record of \$18,300 for the 2000 Thanksgiving Offering was fun.

Dr. Steel recounted the meetings that led to setting the church's goal at 1% of the total BCH goal of \$1 million or \$10,000. In 1999, the church gave approximately \$3,500. The church's leadership decided to set a goal they could not reach on their own. Leading with prayer and a commitment to meet their goal, the church watched as they passed their goal and reached their record amount. One month after receiving the record Thanksgiving Offering, the First Baptist Church of Salisbury collected the third-largest Lottie Moon ingathering in 11 years. Dr. Steel credits the church's vision, enthusiasm and determination to do their part for missions as being the key to their success.

BCH breaks ground on two new DDM homes, and dedicates new children's cottage in Marshville. In June, Baptist Children's Homes broke ground for two new group homes for developmentally disabled adults in Winston-Salem. The homes – Davis House and Hinkle House – are being built adjacent to BCH's Baptist House at Bethabara and will open in early 2002. The R.P and Ella Mae Stegall Home was dedicated August 19, 2001. The new group home is located in Marshville and provides residential care for nine boys.

***New Millennium Families* study guide offered to churches.** The study guide to accompany Dr. Michael C. Blackwell's book *New Millennium Families* is being made available to churches for group Bible studies this fall. Dr. Blackwell believes BCH can help strengthen families in North Carolina Baptist churches and is committed to providing the necessary resources. Dr. Blackwell's new book, *A Place for Miracles*, is a history of Baptist Children's Homes, and will be available in late 2001.

BCH anticipates another record Thanksgiving Offering. The 2001 Thanksgiving Offering goal is \$1,100,000. This represents a \$100,000 increase over last year's record-setting amount. The number may seem enormous, but there is an enormous need. Children and families turn to BCH broken, battered and burdened. But with the help of North Carolina Baptists, BCH shows them God's love. BCH is counting on North Carolina Baptist churches to help meet this important goal during this time of economic uncertainty. Call 1-800-476-3669, ext. 1209 to order promotional material, the new Thanksgiving Offering video, last year's BCH Convention Presentation video or to request a speaker to tell the BCH story in person.

The support of North Carolina Baptists through the Thanksgiving Offering, Cooperative Program, church-designated and individual gifts, memorials, honors, and estate gifts enables us to fulfill our mission statement: "helping hurting children...healing broken families.

BCH is grateful for North Carolina Baptists' prayers and support.

Respectfully submitted by,
Michael C. Blackwell, President
Sandy Saunders, Chairman
Board of Trustees

THE NORTH CAROLINA BAPTIST FOUNDATION, INC.
2000 ANNUAL REPORT

The mission of the North Carolina Baptist Foundation since its inception in 1920 has been to assist the Convention and its institutions and agencies in increasing an awareness among North Carolina Baptists of Christian estate stewardship principles as a means of financially undergirding churches, institutions and mission endeavors on a permanent basis. The uniqueness of the ministries and services provided by the institutions and General Board staff merits increased financial support. The Foundation accomplishes these objectives by offering assistance in estate planning counsel, Will preparation, planned giving, charitable remainder trusts, endowment funds and church fund management.

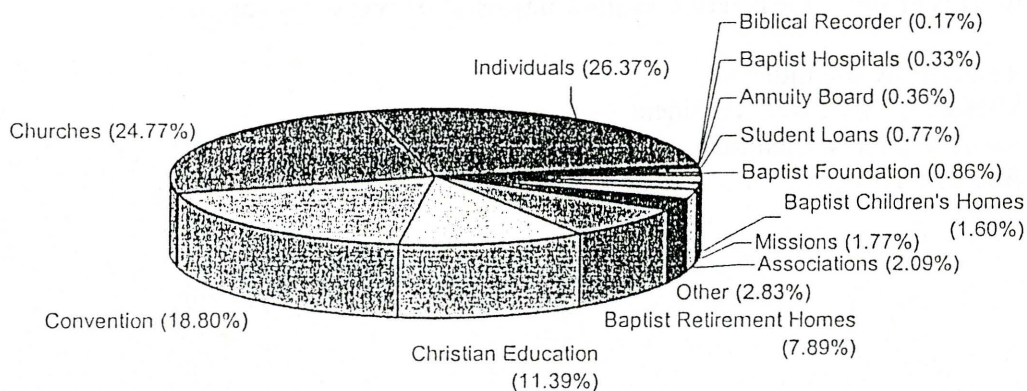
During 2000, the Foundation provided assistance to individuals in establishing 30 endowment funds and 18 charitable remainder trusts totaling \$1.9 million and received \$3.6 million in contributions to existing endowments all of which will ultimately benefit countless Baptist causes on a permanent basis. Programs were provided for 164 churches and associations during the year to promote Make Your Will Month, Christian estate stewardship, and church fund management. Over \$4.6 million from churches and institutions came under management to enhance numerous ministries including scholarships, building funds, cemetery funds, benevolence funds, general operating funds and other various mission causes. With a total of \$10.1 million in contributions, it was the best year ever eclipsing the previous high of \$9.3 million recorded in 1999.

The Foundation employs professional money managers to invest these funds according to an investment policy adopted by its Board. Four investment pools are offered: a growth fund, a balanced fund, an income fund and a fixed income fund. The Foundation uses the services of Salomon Smith Barney to help select top money managers and evaluate performance. As of December 31, 2000, the Foundation held \$97.4 million under management. This is an increase of more than \$4.1 million over 1999.

The Foundation also experienced a record year in distributions in 2000. The previous high in distributions was 1999, with \$5.3 million distributed to charity and individuals. In the year 2000, our distribution totaled 9.1 million dollars, with charity receiving \$6.7 million and individuals, through trusts, receiving \$2.4 million. During the 81-year history of The North Carolina Baptist Foundation, Inc., \$18.5 million has been distributed to individuals and \$32.4 million to Baptist churches, institutions and mission causes for a grand historical total of \$47.1 million.

Nancy Hunter, Chair, Board of Directors
M. Clay Warf, Executive Director

2000 DISTRIBUTIONS



*Meeting the
Challenges of
Health Care*

Report to **2001** *the Associations*



HOSPITAL FOCUSED ON PARTNERSHIPS IN HEALING

"We desire to build a hospital to bring the healing art more definitely under the dominion of the Great Healer." Baptist Hospital's founding commission penned these words in 1921, and this partnership in healing has been our defining purpose. Our Christian heritage remains the foundation of Baptist Hospital and undergirds our daily commitment to provide compassionate, state-of-the-art medical care to those we serve. The Christian faith is truly the "soul of our institution."

SCHOOL OF PASTORAL CARE

The mission of the School of Pastoral Care at Baptist Hospital is: *To provide ministries of growth, hope, and healing in the Spirit of Christ.* We are thankful that North Carolina Baptists are a significant partner in this mission, helping us bring hope to thousands of people each year.

The Department of Chaplaincy and Pastoral Education provided ministry during the past year through more than 61,000 pastoral visits, and worship services every Sunday, Monday, Wednesday, and Friday. The department's Clinical Pastoral Education (CPE) program received a 10-year accreditation from the Association of Clinical Pastoral Education site review team. Fifty-eight students received training in one of the largest and finest CPE programs in America.

The Department of Pastoral Counseling, CareNet, Inc. continues to develop its ministries. Rev. Steve Scoggin became the director of the system's newest center, the East Carolina Counseling Centers, Inc., in Greenville, N.C. CareNet's counseling centers provided more than 25,500 hours of compassionate pastoral counseling in 17 locations across the state during the year. It is the largest pastoral counseling system in the nation. Thanks to N.C. Baptists, free or reduced rate counseling is made available to lower income people.

The Center for Congregational Health, Inc. continues to assist churches in becoming healthier communities of faith. The Center provides consultation to 25 congregations a month. Over 600 church leaders received training in educational events conducted by the Center during the past year. These include the Young Leaders Program for ministers under age 40, and Intentional Interim Ministry training. Thanks to N.C. Baptists, the Center receives essential support for its ministries. This support pays for initial consultation for all Baptist churches, and provides subsidies for churches and ministers who need special financial assistance.

The Department of Church and Community Relations continues to serve as a liaison between the Hospital and churches of the Baptist State Convention. The department's director, Rev. Paul Mullen, provided ministry through 150 requests for assistance with obtaining medical care or concerns about medical bills. More than \$65,000 was provided to N.C. Baptist ministers and their families by the 25% subsidy for their hospital bills. A variety of benevolent ministries was also coordinated, primarily the Baptist Benevolent Care Fund.

BAPTIST BENEVOLENT CARE FUND

North Carolina Baptists, through the Mother's Day Offering, opened their hearts to patients in financial need and gave \$560,624 in 2000 for the compassionate mission of benevolent care at Baptist Hospital. All of these funds were used to pay the hospital bills of patients in financial need. The fund helps patients who "fall between the cracks," making too much for government assistance but not enough to pay for healthcare insurance. They are deeply thankful to N.C. Baptists for this gracious witness to God's love. As one recipient said, "God smiled on us through the Baptists of North Carolina." Her son is a 13-year-old cancer patient.

ADDITIONAL HIGHLIGHTS AT NORTH CAROLINA BAPTIST HOSPITAL

Ranked Among the Nation's Best – Baptist Hospital, part of the Wake Forest University Baptist Medical Center, ranks among the nation's top hospitals according to the July 2001 issue of *U.S. News and World Report*. One hundred eighty-eight of the nation's 6,299 hospitals appear on this list.

Comprehensive Cancer Center Recognized for Excellence – The Medical Center's Comprehensive Cancer Center received a 5-year renewal of its status from the National Cancer Institute. The Comprehensive Cancer Center is one of only 37 such centers in the nation, and is the only one in western North Carolina. It includes Prostate and Breast Cancer Centers of Excellence.

Medical Center Earns Recognition for Trauma Care – Baptist Hospital, a Level One Trauma Center, received verification in both adult and pediatric trauma services in February 2001 by the American College of Surgeons. It is the first Level One Trauma Center in North Carolina to receive such recognition.

Downtown Health Plaza Opens – The 47,000 square foot Downtown Health Plaza opened in 2001 to provide healthcare for underserved people in Forsyth and surrounding counties. Thousands of indigent children, adolescents, and adults have received compassionate and thorough medical care during the year.

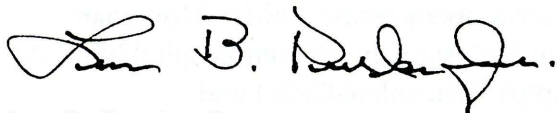
Expansion of Brenner Children's Hospital – Construction of a 400,000 square foot, 11-story addition to the hospital's Ardmore Tower is moving toward completion. Six of the floors will provide space for Brenner Children's facilities, such as private patient rooms, family resource centers, and programs for children with disabilities. The Tower will also include new cardiac catheterization labs and operating rooms.

Information and Appointments – For more information on health related issues or to make an appointment with a physician, contact HEALTH-ON-CALL at 1-800-446-2255 or 336-716-2255.

A CLOSING WORD FROM THE PRESIDENT

The values of our Christian faith are the guiding principles of the North Carolina Baptist Hospital mission. We are strongly committed to be a place of healing, bridging compassionate and respectful care in the Spirit of Christ with the best of medical science and technology. This commitment reflects our heritage and shapes our vision for the future. We are thankful to North Carolina Baptists for being our partner in this healing mission. We were created to serve and care for people in times of their greatest healthcare needs, and we are here for you.

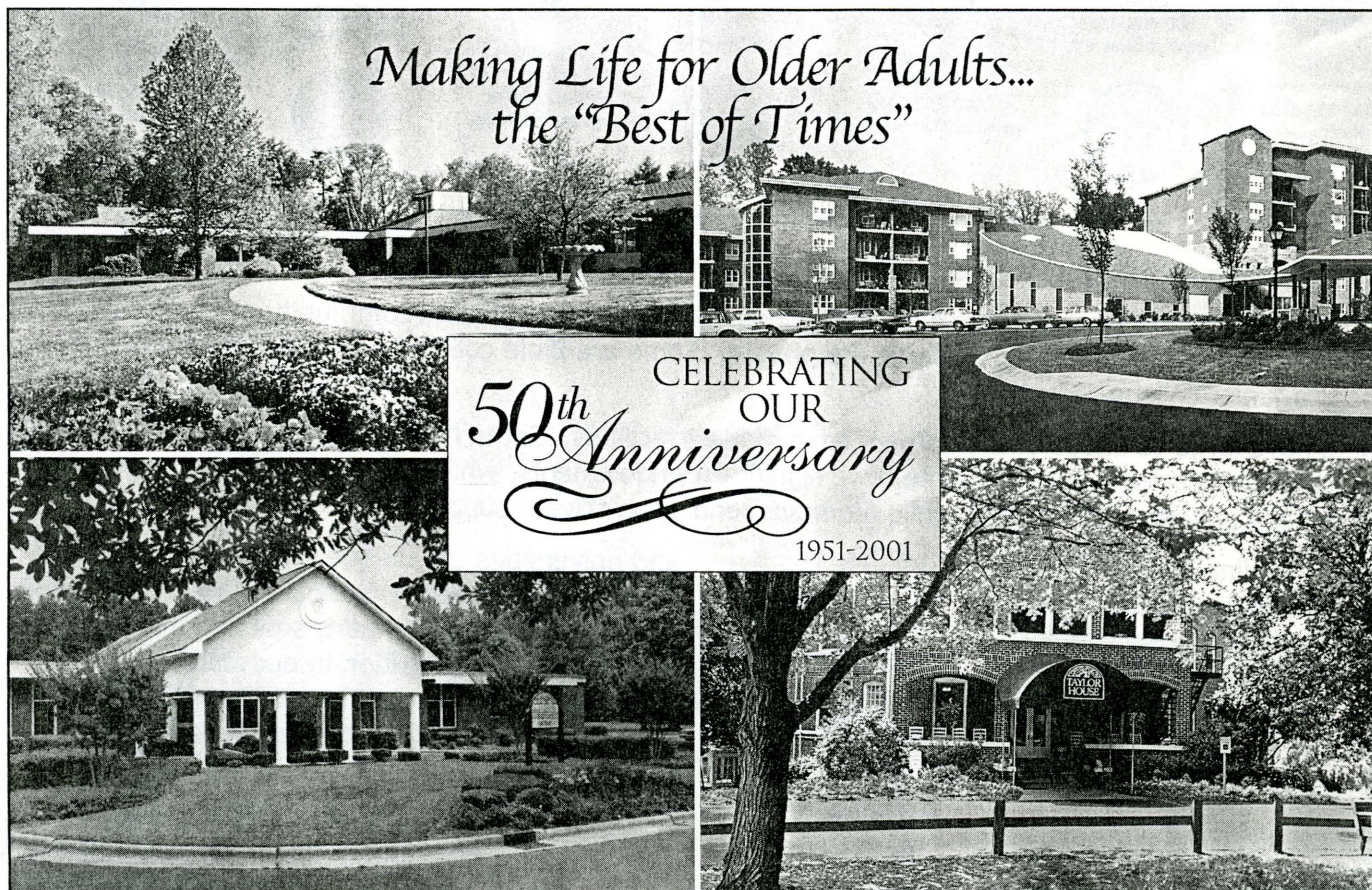
Respectfully submitted,



Len B. Preslar, Jr.
President
The North Carolina Baptist Hospitals, Incorporated



*Baptist Retirement Homes of North Carolina, Inc.
Winston-Salem • 336.725.0202 • www.brh.org*



*Making Life for Older Adults...
the "Best of Times"*

CELEBRATING
OUR
50th Anniversary
1951-2001

*Western North Carolina Baptist Home
Asheville • 828.254.9675*

*Brookridge Retirement Community
Winston-Salem • 336.759.1044*

*Hamilton Baptist Home
Hamilton • 252.798.5901*

*Taylor House
Albemarle • 704.982.4217*

*The Gardens of Taylor Glen
Concord (under development)
704.788.6510*

THE GENEROUS SUPPORT THE HOMES HAS RECEIVED FROM NORTH CAROLINA BAPTISTS HAS ENABLED IT TO MAKE A UNIQUE PROMISE TO ITS RESIDENTS: *whatever the future may hold, Baptist Retirement Homes will care for them the rest of their lives.*

THE BAPTIST ELDER CARE NETWORK — SIMPLE ANSWERS • 1.800.887.7410
*A statewide system of resource counselors answering questions related to the needs of aging persons —
A free service provided by Baptist Retirement Homes*

IN-HOME CARE, WINSTON-SALEM • 336-722-1470

Council on Christian Higher Education

Baptist State Convention of North Carolina

2001



Campbell
University
800-334-4111
www.campbell.edu

Chowan
College
800-488-4101
www.chowan.edu



Gardner-Webb
University
800-253-6472
www.gardner-webb.edu

Mars Hill
College
800-543-1514
www.mhc.edu



Meredith
College
800-637-3348
www.meredith.edu

Wake Forest
University
800-393-4244
www.wfu.edu



Wingate
University
800-755-5550
www.wingate.edu

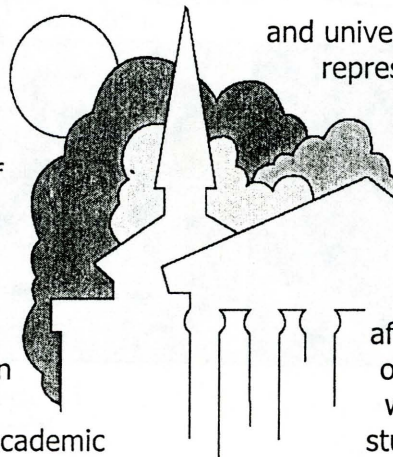
When it comes to colleges, *"one size does not fit all."* There is a difference.

North Carolina has 117 post-secondary institutions. Some are classified as community or technical colleges. Others are public, while some are private. Some are Bible colleges. One is a seminary and one is a junior college.

Some have large campuses, while others have modest facilities. Some have major sports teams, while others offer intramural events. Some have significant endowments, while others struggle to stay open. Some have government support, while others depend upon private support.

North Carolina Baptist colleges we trust and support. They that one's education should belief is not shared by every not allowed to invoke the name of worship God. North Carolina different.

The colleges and universities Convention of North Carolina their Baptist heritage. Students on their faith through Bible study, opportunities in addition to their academic



and universities are unique. They are institutions represent places that share our core belief involve the heart, soul and mind. This institution in our state. Some are God, neither are they allowed to Baptist colleges, however, are

associated with the Baptist State affirm their faith in God and acknowledge our campuses are challenged to develop worship, ministry and mission studies.

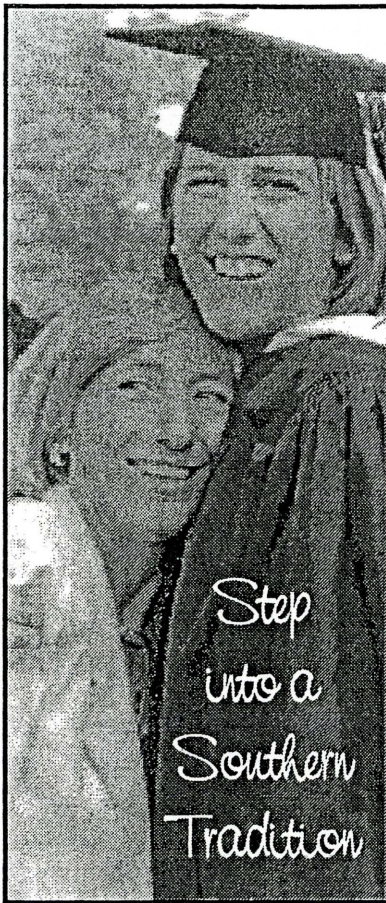
When a professor on one of our campuses was asked, *"Why have you chosen to be a part of this facility?"* He responded, *"Because I am free to mention the name of Jesus on this campus."*

When it comes to colleges, *"one size does not fit all."*

Students in our churches struggle when they are deciding which college or university to attend. It is a decision that will follow them the rest of their lives. If they choose a school where faith is left out of their educational experience, they will graduate with degrees without the benefit of their faith being challenged.

Thank you North Carolina Baptists for your continued support of Christian higher education at Campbell, Chowan, Gardner-Webb, Mars Hill, Meredith, Wake Forest and Wingate.

Wayne D. Wike, Executive Director
Council on Christian Higher Education, PO Box 1107, Cary, NC 27512-1107
919-467-5100 ext. 185/ 800-395-5102 ext. 185/ wwike@bscnc.org



CAMPBELL

UNIVERSITY

Post Office Box 546
Buies Creek, North Carolina 27506

- College of Arts and Sciences
- Lundy-Fetterman School of Business
- School of Education
- Norman Adrian Wiggins School of Law
- School of Pharmacy
- Divinity School
- Over 50 majors available

Degrees offered: BA, BBA, BHS, BAS, BS, MA, MBA, MEd, MDiv, JD, PharmD

Toll-free: 1-800-334-4111 www.campbell.edu

SE/02-30B-3

- Thank you churches for your support of Christian Higher Education through the Cooperative Program.
- Thank you North Carolina Baptist Churches for your support of Baptist colleges and universities in North Carolina through budget plans A, B,C and D.
- Beginning our 116th year of providing quality Christian Higher Education.
- Providing opportunities around the world, including 2,600 on our campus in Kuala Lumpur, Malaysia.
- The benefits of a major university, the advantages of an intimate college setting.
- Nearly 8,500 students representing all 50 states and more than 40 countries around the world.
- Providing students with and "Education for Life."

George W. Truett Baptist Camp & Conference Center
346 Truett Camp Road
Hayesville, N. C. 28904
828 389 8828
Dinning Hall & Conference Center # 828 389 9044
Fax# 828 389 4648

Annual Report for 2001

As your campdirector, I am honored to serve in this position and to be able to help in this mission effort.

We had two weeks of GA Camp this year with 293 girls attending with 34 girls being saved and 108 rededications made.

Lori Gilbert and Lindsey Cope were the leaders with the help of their counselors they did an outstanding job with the girls to lead them in a good worshipful time.

We had 126 children attending Junior Music Week. Lori Gilbert and Lindsey Cope were the leaders and there were 8 saved with 36 rededications and 2 surrendered to the call to preach. The counselors and music directors did a terrific job also.

Youth Music had 137 attending it this year, J Gilbert was the leader and with his music directors and helpers this was one of the best years ever. There were several decisions made for the Lord and his work.

We had 130 boys to attend the Boys Week this year, Aud Brown was the leader and there were 13 saved and 28 reded ications.

We are deeply grateful for all the chuches in Region 10 for their prayers and support. We hope to start working shortly on four more rooms at the Penland Hall Barracks; pray and support us in this effort as this is needed to house all the children in the same area.

We hope you will put the camp in your church budget or will support the camp in any way that you can.

PLEASE ENCOURAGE YOUR CHILDREN TO REGISTER EARLY FOR
2002 CAMP AS IT IS GETTING BIGGER AND BIGGER EACH YEAR.

Worship and Bible study is still a very important part of the camp program and we are still trying to help children get saved and be willing to do what Jeus would have them do.

Respectfully Submitted
Richard Roberson
Camp Director

Biblical Recorder 2001 Associational Report

Baptists cling stubbornly to the idea that people should think for themselves and make up their own minds about issues of importance. For this reason, Baptists affiliated with the Baptist State Convention of North Carolina (BSCNC) are fortunate to have a resource that provides regular, dependable and balanced news coverage of wide-ranging matters relating to Baptist life.

The Biblical Recorder, the official news journal of the BSCNC, has served this purpose since its establishment in 1833 by Thomas Meredith, a prime mover in founding the Baptist State Convention in 1830. The Biblical Recorder was privately owned and operated in support of Baptist work in North Carolina until 1938, when the paper was purchased by the Baptist State Convention and incorporated as an agency of the convention.

The Biblical Recorder is widely acknowledged to be in the top echelon of state Baptist papers, winning national honors for news and editorial writing in 2000.

The Biblical Recorder's strategic role in promoting God's kingdom work through North Carolina Baptists grows from its mission statement: *"to further Christ's kingdom by providing relevant news, insightful opinions and supportive resources to North Carolina Baptists in a timely and accessible fashion."*

As a BSC agency, the Biblical Recorder belongs to all North Carolina Baptists, and appropriately reflects the geographical, ecclesiological, and theological diversity that is typical of the churches making up the Baptist State Convention. The editors and staff of the Recorder work diligently to offer a fair and balanced presentation of the news that most affects the life and ministry of North Carolina Baptists. Opinions advanced through editorials, letters, and analytical essays help to spark informed thinking on important issues. Feature stories about notable or innovative activities of churches and associations, regular reports on partnership missions efforts, and weekly commentaries on the most popular Sunday School lessons offer ideas, encouragement, and inspiration to readers of the Recorder.

In addition to its printed form, the Biblical Recorder maintains a popular presence on the World Wide Web, significantly enhanced through major upgrades in early 2001. The Recorder's website at www.biblicalrecorder.org offers Internet users an opportunity to read much of each paper's content online, and allows for the posting of breaking news prior to the printing of the next issue. New features include an internal search engine, a church locator service, classified ads, Bible study resources and a news/weather portal. Thousands of interested readers around the world consult the online version regularly.

As a BSCNC agency, the Biblical Recorder receives annual support from Cooperative Program gifts, making it possible to offer the Recorder at very affordable subscription rates. Currently, the annual rates are:

- Church News Service (incorporates church newsletter in the Recorder) - \$7.50
- Every Home Plan (20% + of church families, paid through the church budget) - \$8.50
- Club Plan (4 or more persons in a church subscribe together) - \$9.75
- Individual Subscription - \$11.90

Subscription packets and free sample issues are available. For more information, please contact:

Biblical Recorder, Inc.
232 W. Millbrook Road
Raleigh, NC 27609

Phone: (919)847-2127
E-Mail: biblica@biblicalrecorder.org

Ray N Howell, III, Chair, Board of Directors
Tony W. Cartledge, Editor/President

ANNUAL REPORT TO THE ASSOCIATIONS 2001

It is with humble gratitude that the Christian Action League of North Carolina serves the Lord Jesus Christ and the churches of this great state as a Beacon of light, guiding referendums and legislation through the murky waters of special-interest groups and educating God's people about the moral problems in our state and nation. Our goal is to encourage and organize the people of God so that our light will be seen brightly throughout our state; and when we speak, it will be in one accord and will resound loudly.

A. Christian Values

- a. The Christian Action League again co-sponsored the Sixth Annual Christian Heritage Week of North Carolina held in March. It was our pleasure to provide awards for excellence to those high school students who won the essay contest on America's Christian background.
- b. CAL has continued to promote and distribute copies of the Ten Commandments throughout North Carolina. To date, over 17,000 copies have been mailed. CAL was instrumental in getting HB 195 passed that would allow public schools to post the Ten Commandments. This bill passed 94-18 on 7/26/2001.
- c. Promoted awareness of worldwide persecution of Christians through email alerts and radio.
- d. Participated with the American Family Association in distributing copies of our national motto posters "In God We Trust" through our newsletter and providing a link from our website for the purchase of these posters.
- e. Joined with Family Life Ministries in promoting and distributing copies of the Marriage Covenant Certificates.
- f. Set up CAL exhibit at Baptist State Convention

B. Radio

"Christians In Action", Station WAGO (88.7 FM) Snow Hill, has expanded to WAAE, 91.9 FM in New Bern and WRNA (1140 AM) and WRKB (AM 1460) in Kannapolis. This broadcast consists of a five-minute commentary on issues that affect our lives today. Our projection is to ultimately reach the whole state.

C. Gambling

- a. The Christian Action League has been instrumental in keeping a lottery referendum bill in Committee. Through our newsletter, emails, radio and postal service, we have encouraged the Christian Citizens of North Carolina to keep letters and calls constantly coming in to the N. C. General Assembly telling their legislators they do not want a lottery in North Carolina.
- b. The Executive Director and President of CAL joined Citizens United Against the Lottery in a grassroots effort to fight the lottery. The Executive Director spoke at a news conference held at the Press Room of the Legislative Building by this group. Members of CUAL are Chuck Neeley, former gubernatorial candidate, Frank Daniels, Jr., former publisher of the News and Observer, Dr. William Friday, former President of the UNC System; Dr. Billy Graham, U. S. Senator Lauch Faircloth, former State Treasurer Harlan Boyles and former Governor Robert Scott.
- c. CAL has held "A Christian Looks at Gambling" workshops in Statesville, Burlington, Morehead City, New Bern, Laurinburg, Asheville, Charlotte, Beulaville and Salisbury, areas whose legislators were targeted as "on the fence" on the lottery issue.
- d. The League has provided a packet of gambling materials for preachers across the state to use in educating their people about the dangers of a lottery.

D. Abortion

- a. The Executive Director of CAL spoke before a Senate Committee to promote HB 275 – Infant Homicide Prevention Act. The bill, which nearly failed to get out of the House in the spring, gained near unanimous support after the Christian Action League got behind the legislation. The bill allows mothers under certain circumstances to avoid abandonment charges if they leave their newborn with a responsible adult or health care provider. The League believes that this is an alternative to abortion and infant homicide after birth.
- b. CAL has encouraged its members to call President Bush to encourage him to stand firm for the sanctity of human life on the issue of stem cell research through emails.

E. Alcohol

- c. Participated in four LBD campaigns since January, 2001. We help with their organizational meetings, rallies and providing educational materials. Wilson Mills was successful in defeating off-premise beer and wine sales.
- d. Worked in the General Assembly for defeat of HB 1143 – Sports Club ABC Permits which would allow liquor-by-the-drink without a vote of the people. Rev. Mark H. Creech, Executive Director of CAL, spoke before the Senate Committee against this bill. Unfortunately, the Governor signed this bill into law on 5/30/2001.

E. Pornography

Have produced and aired several radio programs to inform the public of the internet pornography crisis. Educate communities on how they can rid their neighborhoods of adult establishments.

G. Homosexuality

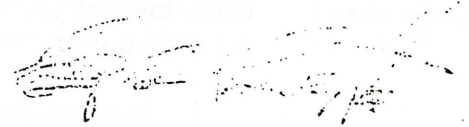
CAL monitors and informs the Christian community of the current homosexual agenda through our email alert and news letter. We tract bills that would give protected status for homosexuals. Several bills this session are HB 941, HB 871 and SB 547; all remain in committee.

The Christian Action League of North Carolina produces a quarterly newsletter *The Beacon* that has a distribution of over 21,000. We also send out an email alert every Friday to over 600 members to keep them abreast of current moral, ethical and political issues that affect our state and nation. All services of the Christian Action League are provided at no charge. We depend on God's people to provide for His work.

Working For A Better North Carolina



Reverend Mark H. Creech
Executive Director



Coy C. Privette
President



68 Hospital Road
Sylva, NC
28779-2795
828/586-7000
Fax 828/586-7467

We send greetings to the 2001 Annual Meeting of the Tuckaseegee Baptist Association from the Chaplains office of Westcare Health System. Paul writes "Because of our love for you we were ready to share with you not only the Good News from God, but even our own lives." I Thessalonians 2:8

In these anxious times for our nation and the world, our chaplaincy – pastoral care department is strong and active. We continue to visit new patients on a regular basis and give spiritual support to all. Our ministry to patients, patient families, staff and the community continues to be a vital work of the chaplaincy program.

We are continuously aware of the need for spiritual support and encouragement among the patients we serve and the staff who serve them. With the continuing support of the area churches, pastors and faith community we will be enabled to continue our ministry of compassion and inspiration to the sick and bereaved.

Our chaplaincy and pastoral care department is staffed by one full time chaplain at Harris Regional, a part time Chaplain at Mountain Trace Nursing Center and thirteen chaplain associates who serve on call. At Swain County Hospital we also have chaplain associates who serve the hospital "on call time."

"Pastoral Care Week," will be celebrated the week of November 5 - 9, 2001 with a reception in the lobby by the chaplaincy committee, "a blessing of the hands" ritual for our many departments and staff at each facility, and recognizing the importance of our common ministry. We encourage each local church to observe the last Sunday of October (October 28th 2001) as Annual Hospital Chaplaincy Sunday, in support of the chaplaincy program by:

- remembering our chaplain, chaplain associates and the program in prayer
- emphasizing the chaplaincy services available to all persons who enter our facilities
- to receive an offering of support for the chaplaincy program if not already in the church annual budget. (one third of the support comes from our local churches)

We hope in the future months to keep each church informed of the activities of the chaplaincy by a brief mailing, hopefully on a regular basis and to offer pastoral care training and information to area pastors and laypersons.

We are grateful at Westcare, Harris Regional, Mountain Trace Nursing Center and Swain Co for the prayerful and present support of churches, pastors and the faith community. We request you continue to support us with your prayers, and by encouraging your members to request chaplain services when patients in our facilities, and for you to become involved in one of our programs.

Please call on us whenever we can support your membership as patients or employees of our facilities and when we can extend your ministry in the hospital setting.

Thanking you for letting me serve you and your people,

Sincerely,
Ron Allen, Chaplain

**Harris Regional
Hospital**
68 Hospital Road
Sylva, NC 28779-2795
828/586-7000
Fax 828/586-7467

**Swain County
Hospital**
45 Plateau Street
Bryson City, NC 28713
828/488-2155
Fax 828/488-4039

CHARLES L. WYATT, M.Div.
2472 Highlands Road
Franklin, NC 28734
(828)524-3040

The Nantahala Counseling Center, established in March 1996 through the cooperative efforts and funding of area churches and the Division of Pastoral Care of Wake Forest Baptist University Medical Center, continues its ministry of pastoral counseling from a Christian faith perspective to individuals, couples and families. consultation for pastors, marriage enrichment retreats, and seminars on spiritual and emotional health are also provided. A safe, professional atmosphere where problems can be explored and resources offered for help in resolving these problems is provided and in many cases health insurance covers most of the cost for counseling. Client assistance funds are available for these with limited income.

This ministry depends upon the financial support of area churches to provide client assistance funding, office space and supplies, and secretarial support. The Board of Directors includes representatives from five Western North Carolina counties. At present the Board is exploring ways to create satellite centers in order to expand this ministry. Churches are encouraged to support this ministry. For information about the Center, please contact the Center Director, Charles L. Wyatt.

South West Area Resort Ministries

Bryson City, NC

Our first adventure was the Heritage Street Festival in Bryson City Memorial Day weekend. With a skeleton crew of volunteers we wondered how we could cover all our activities. The Lord sent us a skilled crew: Dewey and Gray Butler, Click and Wanda Nance and Harry Allen. The festival was a success.

The Tennessee River Baptist Association purchased a building this year. They used part of the building to construct dormitories, including kitchen, showers and laundry, for the youth groups to use this summer and also an office for SWARM. This was a major renovation and did not move as quickly as they had hoped. However, it was far enough along where groups could stay in the building with some inconveniences.

Our office was the last to be completed so we had little communication with the outside as we could not be reached by phone much of the time and e-mail was not connected. The office has now been completed.

We were short on volunteers this year but the Lord blessed us with 154 salvations. We were able to share the gospel through the following ministries:

- 93 campground worship services
- 44 programs at Santa's Land
- 4 programs at Job Corp
- 3 street festivals
- 43 family evening programs in campgrounds
- 29 day camps
- 11 programs at Senior Citizen Center
- 30 programs at Nursing Homes
- 10 services in local churches put on by youth groups
- 1 program at Baptist Children's Home at Broyhill

Youth groups do not get out of school until the second week of June and start back the first of August. We need volunteers especially to cover these dates. As you begin to make plans for next year we would appreciate your including SWARM in your schedule. We need volunteers all summer. Please continue to pray for us and the ministry here.

Vance & Doris Russ, Directors
SWARM

REPORT for 2001 BOOK of REPORTS

OFFICE of ANNUITY

The Annuity Office of the Baptist State Convention of North Carolina in partnership with the Annuity Board of the Southern Baptist Convention provides services related to retirement planning, financial support of ministers and other church employees, life and health insurance, ministry to seminary/divinity students, and church/clergy tax issues. These services are provided in a variety of ways to churches and church employees.

As a result of an expanded mission statement and two new ministry assignments given to the Annuity Board in 2000, the year 2001 is proving to be one of transition. Specifically, much of the Board's work during 2001 has focused on preparing to offer personal investing and institutional investments with the accompanying need for all the investment funds to be registered during this year. Despite a disappointing year in the financial markets, ten of the fourteen Annuity Board investment funds out-performed their benchmark for the year. More specifically, all six equity funds and all four blended funds exceeded benchmark returns while all four fixed income select funds under-performed.

Insurance continues to be one of the greatest challenges as the Annuity Board continually seeks to maintain viable products for participants. New insurance products and services have been developed and plans outlined for implementation. Two new Medicare supplement plans were designed and implemented. The Annuity Board paid more than \$139 million in insurance benefits last year.

The Endowment Ministry, designed to give support to retired ministers, denominational employees and their widows with special needs, enjoyed a banner year. The relief ministry reached a record monetary level as \$5.3 million was distributed to needy retired ministers and widows. Guidelines for the Adopt An Annuitant ministry were revised to allow more applicants to qualify for the gift.

As of May 31, 2001, there were 4,842 active participants in the retirement plan with 62% of our North Carolina churches participating. The number of persons receiving retirement benefits has increased to 2,815 with another 361 being assisted through the Adopt An Annuitant ministry plan.

It is our strong desire to serve all of our churches, ministers, and church employees. For more information related to products or services, call the Baptist State Convention of NC at 1.800.395.5102 extension 174, visit our Web site at www.bscnc.org, or call the Annuity Board at 1.800.262.0511 or visit the Annuity Board Web site at www.absbc.org.

Johnny Ross, Senior Consultant
Annuity

ARTICLES OF INCORPORATION

NONPROFIT CORPORATION

OF

TUCKASEIGEE BAPTIST ASSOCIATION, INC.

I, the undersigned person of the age of eighteen years or more, acting as incorporator for the purpose of creating a nonprofit corporation under the laws of the State of North Carolina, as contained in Chapter 55A of the General Statutes of North Carolina, entitled "Nonprofit Corporation Act", and the several amendments thereto, do hereby set forth:

1. The name of the corporation is:
Tuckaseigee Baptist Association, Inc.

2. The period of duration of the corporation shall be: perpetual.

3. The purpose for which the corporation is organized is to engage in any lawful act or activity for which corporations may be organized under Chapter 55A of the General Statutes of North Carolina.

4. The Corporation shall have members as provided by the by-laws.

5. The street address and county of the initial registered office of the corporation is:

Lovedale Road, State Road No. 1790, P. O. Box 266, Sylva, Jackson County, North Carolina, 28779.

6. The name of the initial registered agent of the corporation at the address above is:

John Reid.

7. The number of directors constituting the initial board of directors shall be three, and the names and addresses of the persons who are to serve as directors until the first meeting of the corporation or until their successors are elected and qualified are:

Dennis Ensley

170 Fisher Circle
Sylva, NC 28779

Howard Buchanan

Rt. 2, Box 166
East Fork Road
Sylva, NC 28779

Lee Ensley

Rt. 3, Box 414
Sylva-Cullowhee Road
Sylva, NC 28779

8. The name and address of the incorporator is:

J. K. Coward, Jr.

43 W. Main Street
Sylva, NC 28779

9. Any other provisions which the corporation elects to include are attached.

IN TESTIMONY WHEREOF, I have hereunto set my hand, this the 20th day of May, 1994.

J. K. Coward, Jr., Incorporator
J. K. Coward, Jr., Incorporator

NORTH CAROLINA
JACKSON COUNTY

I, Jennie S. Miller, a Notary Public, do hereby certify that J. K. COWARD, JR., personally appeared and acknowledged the execution of the foregoing Articles of Incorporation.

IN TESTIMONY WHEREOF, I have hereunto set my hand and official seal, this the 20th day of May, 1994.

Jennie S. Miller
NOTARY PUBLIC

My Commission Expires:

9-9-97

f:/JENNIE/93J393.COR

BY-LAWS OF THE TUCKASEIGEE BAPTIST ASSOCIATION, INC.

ARTICLE I. NAME

The name of the body shall be the Tuckaseigee Baptist Association, Incorporated.

ARTICLE II. OBJECTIVES

The purpose of the Association is to be a fellowship of churches on mission in our setting. The specific objectives of the Association are as follows:

1. To promote harmony, understanding and spiritual power between the churches.
2. To afford and promote a larger fellowship of Christians in the work of Christ.
3. To provide such programs, projects and organizations as will strengthen the churches and assist them in achieving their goals and objectives.
4. To discover needs which cannot be met effectively by churches individually and to coordinate the use of resources in meeting these needs.
5. To encourage support by every church for the mission causes of the Association, the North Carolina Baptist Convention, and the Southern Baptist Convention.

ARTICLE III. AUTHORITY

SECTION 1. The Association shall have the power to elect and install its officers in whatever manner the body may deem expedient.

SECTION 2. The Association shall have power to recommend measures of usefulness and guidance to our churches in matters of organization, ordinations and questions of doctrines and discipline,

SECTION 3. The Association shall have no power to infringe upon the right of local churches as sovereign and independent bodies.

ARTICLE IV. MEMBERSHIP

SECTION 1. The Association shall be composed of regularly constituted Baptist churches in cooperating fellowship with the Southern Baptist Convention and following the teachings of the New Testament.

SECTION 2. The Association shall be the sole judge of its membership and may receive or reject churches applying for membership therein at its pleasure. Churches applying for membership shall agree to come under the watchcare of the Association for one year. It is understood that during this period of watchcare the church shall be entitled to all rights and privileges of the Association except those of voting.

Applications for membership shall be presented to the Credentials Committee of the Association. The applications will consist of a letter from a constituted church stating their desire to affiliate with the Tuckaseigee Baptist Association. The Credentials Committee as a part of the review process may invite the requesting church to a conference to discuss its history, its mission strategy, and any other information that may be pertinent to the application. The Credentials Committee may then approve the application and recommend them to the Executive Committee. The Executive Committee may by a simple majority vote accept the requesting church to come under the watchcare of the Association for one year. It is suggested that any church under watchcare participate in the missions program of the Association. At the end of the year, the church may be voted in as a member of the Association with full privileges by a two-thirds vote of the messengers present and voting at the annual meeting of the Association, provided that the church submits an acceptable letter and at least one messenger be present at the meeting.

SECTION 3. Any church may withdraw from the Association at its pleasure and should notify the Association of this action in writing. Such action will be recognized by the Association at the next annual meeting.

SECTION 4. It shall be the duty of each church to furnish the Associational Clerk, before each annual session, an annual letter, the forms provided by the Associational Clerk, giving the information requested as is applicable to each church situation.

SECTION 5. The Association may withdraw from any church which has become unscriptural in its doctrine or practices by a two-thirds majority vote of the messengers present and voting at the annual meeting. Such vote is to be taken by written ballot.

ARTICLE V. MEETINGS

SECTION 1. The Association shall hold its annual meeting on Thursday and Friday preceding the third Sunday in October. Special meetings of the Association may be called by the Executive Committee provided two weeks written notice is given to the member churches.

SECTION 2. Each church shall be entitled to be represented at the annual meeting by four messengers. Churches with

more than 100 resident members shall be entitled to an additional messenger for each additional 50 resident members as determined by the church or fraction thereof and not to exceed 10 messengers from any one church.

SECTION 3. Churches are requested to elect their messengers and alternatives in conference to attend the annual meeting.

SECTION 4. In case of internal dissension in a church and two parties coming to the Association, each claiming to represent the church, neither party shall be seated until the question is decided as to which party is in union with the Association. The decision is to be made by a majority of the messengers present and voting.

ARTICLE VI. OFFICERS

SECTION 1. General officers of the Association shall be: Moderator, Vice Moderator, Clerk, Assistant Clerk, Treasurer, Assistant Treasurer, Historian, Parliamentarian, and Assistant Parliamentarian. Program leaders shall be Sunday School Director, Church Training Director, Music Director, Chairman of Evangelism Committee, Seminary Extension Director, Chairman of Mission Committee, Director of Missions, Trustees, Pastor Conference President, Youth Director, Stewardship Director, Vacation Bible School Director, Woman's Missionary Union Director, Brotherhood Director, Deacons Chairmen, Senior Adult Director, Singles Ministry Director, and such other officers as the Association may desire to elect.

Associational representatives will be elected for the following institutions and agencies: (1) Truett Camp, (2) Baptist Children's Homes, (3) Baptist Hospital, (4) North Carolina Baptist Homes, Inc. (Homes for the Aging), (5) Biblical Recorder, (6) Christian Education, (7) Annuity Board and other representatives as may be deemed appropriate and elected in the Association.

SECTION 2. With the exception of the Director of Missions and Trustees, the terms of office for all officers of the Association shall be for one year with the privilege of continuing re-election. The Moderator and Vice Moderator shall not be eligible for re-election but one year in succession. (1) The number of Trustees shall be three. (2) The term of service should be for three years, with the term of only one expiring each year. In the first election of Trustees, the term of service for one should be three years, another two years, and the other one year. (3) Upon the expiration of term of service, the Trustee may or may not be re-elected for another term of three years.

Each term of office shall begin with the close of the annual session. The Associational financial year will run from January 1 through December 31.

ARTICLE VII. DUTIES OF OFFICERS

SECTION 1. The **Moderator** shall preside and maintain the order of all meetings of the Association and Executive Committee. He shall serve as ex officio member of all committees of the Association.

He shall appoint the Committee on Committees and all other committees pertinent to the operation of the body not named by the Committee on Committees in its regular report.

SECTION 2. The **Vice Moderator** shall assist the Moderator and preside in the absence of, or at the pleasure of the Moderator.

SECTION 3. The **Clerk** shall keep a complete and accurate record of all transactions; shall prepare a "Book of Reports" to be distributed to messengers at the beginning of each day's session of the annual meeting; and shall cause to be printed minutes concerning the records made.

The Clerk shall distribute to the clerk of each church in the Association blanks for the preparation of the church letter as soon as they are received from the State Convention. This form is to be returned to the Clerk of the Association not later than four weeks prior to the meeting of the body or by the deadline set by the Clerk and Director of Missions. All program reports should be returned by the same date.

An **Assistant Clerk** shall work with the Clerk in preparing the "Book of Reports," the annual minutes and the registration of messengers at the annual meeting.

SECTION 4. The **Treasurer** shall receive and dispense by order of the Executive Committee of the Association while in session, the money of the treasury and make a complete report at the Annual meeting and a current report at each Executive Committee meeting.

An **Assistant Treasurer** shall be elected to assist the Treasurer by request and to serve in the event the Treasurer resigns or is ill or unable to function.

SECTION 5. The **Historian** shall keep the records of the Association up-to-date.

SECTION 6. The **Parliamentarian** shall upon the request of the presiding officer of the body, advise and assist the Association with respect to all matters involving Parliamentary Procedure.

An **Assistant Parliamentarian** shall be elected. The Parliamentarian and Assistant should always communicate with each other to ensure that this office is filled at each Associational Annual or Executive Committee meeting.

SECTION 7. The **Program Leaders** and the **Institutional Agency Representatives** shall perform all duties customary to their titles and shall make a written report to the annual session of the Association.

SECTION 8. Trustees have no authority except by direction of the Association and are not personally bound by signatures but are to be the legal signees for the Association. Trustees represent the Association in legal matters. Trustees act on behalf of the Association in acquisition and disposal of Associational property.

They sign all deeds of conveyance, execute all notes, bonds or mortgages, intervene in all suits, by authority of the Association.

All persons dealing with the Trustees, as Associational officers, may rely upon any written resolution duly adopted by the Association or Executive Committee, directing and authorizing the Trustees to act in its behalf and certified by the Association Moderator and Clerk.

ARTICLE VIII. RULES OF ORDER

The business of the Association shall be conducted according to Robert's Parliamentary Practice or in a manner not contrary thereto.

ARTICLE IX. QUORUM

The quorum for the Annual Associational meeting or any special called meeting of the Association shall not be less than 25 percent of the member churches.

ARTICLE X. THE EXECUTIVE COMMITTEE

SECTION 1. The Executive Committee shall be composed of the General Officers and Program Leaders elected by the Association and the Pastor and one member from each church in the Association. No Pastor, by virtue of his being an Associational Officer or Program Leader shall be disqualified as a member of the Executive Committee, from representing the church or churches he may be serving in the Association. Twelve of these members shall constitute a quorum.

SECTION 2. It shall be the duty of the Executive Committee to act for the Association on matters arising when the Association is not in session and to make a report of all work to the next session of the Association. This body shall meet at a time and place designated by the Moderator on Monday following the first Sunday of each quarter except for the July quarter which shall meet on the second Monday of the month of July. Special meetings of the Executive Committee may be called by the Moderator with a one week notice to the churches.

SECTION 3. All vacancies occurring on committees or among elected officers shall be filled by the Executive Committee.

SECTION 4. In the event that a vacancy occurs with the Trustees, the Executive Committee should fill such vacancy for the remainder of the term.

ARTICLE XI. ASSOCIATIONAL STANDING COMMITTEES

SECTION 1. The Association shall have such standing committees as may be deemed necessary to promote efficiently the work of the Master in our midst. The terms of office for all committee members shall be for one year except where specifically stated otherwise.

SECTION 2. COMMITTEE ON COMMITTEES. It shall be the duty of this committee to nominate at the general meeting all standing committees as set forth under Article XI.

SECTION 3. THE NOMINATING COMMITTEE shall be composed of seven members. To this group the Directors of Sunday School, Discipleship Training, Woman's Missionary Union, Brotherhood and Music Ministry will be added.

It shall be the duty of this committee to nominate the Officers, Program Leaders and Institutional Agency Representatives. These nominees shall be notified in writing not less than one month prior to presenting of their names at annual session.

SECTION 4. THE ORDER OF BUSINESS COMMITTEE, composed of three members, shall plan the annual program of the Association and present it to the Executive Committee at its October meeting.

SECTION 5. THE CREDENTIALS COMMITTEE shall be composed of three pastors and two laymen. It shall examine applications of churches seeking admission into the Association in keeping with Article IV and make recommendation to the Association. It shall counsel with churches that are out of harmony of fellowship with the Association.

SECTION 6. THE PLACE AND PREACHER COMMITTEE shall be composed of three members. The duties of this committee shall be to recommend the place or places for the following annual meeting and to recommend the preacher and alternate to deliver the annual sermon for the following year.

SECTION 7. THE RESOLUTIONS COMMITTEE shall be composed of three members. It is appointed by the Moderator at the October Executive Committee meeting. It shall be the duty of this committee to present suitable resolutions at the annual Associational meeting.

SECTION 8. THE MEMORIAL COMMITTEE shall be composed of three members. It shall be the duty of this committee to bring a report to the annual meeting of those listed by the member churches as deceased since the last annual meeting and shall lead a memorial service in their memory.

SECTION 9. THE FINANCE COMMITTEE shall be composed of six members including the Treasurer of the Association. This committee shall: (a) present a Budget to the Association for the following year; (b) devise plans for raising the funds for the Associational Budget; (c) audit the finances and financial records of the Association annually and anytime there is a change of Treasurer or at the direction of the Association or the Executive Committee; (d) report all audits to the Annual Association Meeting.

SECTION 10. THE CONSTITUTION COMMITTEE shall be composed of three members and shall perform all duties specified in Article XV.

SECTION 11. THE ORDINATION COMMITTEE shall be composed of five designated Pastors and all other Pastors who desire to sit with the committee.

A. The committee serves on an advisory capacity only and serves at the request of the church from which the member is seeking ordination.

B. The committee should examine such candidates for the ministry as come before it as to their call and fitness for the gospel ministry and make such recommendations to the church as they feel led.

C. The committee should assist in arranging the proper service of ordination when such assistance is requested.

D. The Executive Committee should be informed regularly of the work of the committee.

E. Each church desiring to ordain a candidate is urged to consult with the committee, and shall give two weeks notice in which the committee is to do its work.

SECTION 12. THE EVANGELISM COMMITTEE. The duties of the committee shall be to direct and propose a perpetual program and spirit of evangelism in the Association. It shall arrange and direct all Associational-wide evangelistic activities.

SECTION 13. THE ASSOCIATIONAL MISSIONS DEVELOPMENT COUNCIL shall be composed of eight (8) members, nominated by the Associational Committee on Committees and elected by the Association at the annual meeting. The committee shall be: Missions Development Director, Promotion Director, Survey Director, Associational WMU Mission Action Director, Associational Brotherhood Director, Sunday School Outreach Director, Church Training Director, and Associational Deacons President. The Missions Development Director, Promotion Director, and Survey Director shall be elected for a three-year term, with one member named each year. The other five positions shall be filled by the person who is elected to fill those five Associational offices.

The duties of the AMDC are to lead the associational missions development in the five mission performance tasks: (1) call churches to be on missions; (2) train, develop, and encourage church and Associational workers; (3) provide resources and services to churches and leaders; (4) provide opportunities for working together in missions, ministry and growth; (5) establish and maintain appropriate communications and relationships with the community and the denomination.

SECTION 14. THE BUILDING AND GROUNDS COMMITTEE shall be comprised of three members. The committee shall be responsible for and in charge of the upkeep and repairs of the Associational building, grounds, and equipment.

SECTION 15. THE PERSONNEL COMMITTEE

A. The Committee shall be composed of 7 members of which 3 are pastors.

B. They shall recommend policies and procedures for the selection, supervision and termination of Associational staff personnel. Those policies and procedures shall be approved by the Association.

C. Prepare and maintain an organizational manual relation to the Association's staff personnel.

D. Develop and recommend to the association policies and procedures for paid and volunteer staff personnel.

E. Develop policies and procedures regarding continuing education and development for the Director of Missions and other Associational staff.

F. When a staff vacancy occurs, other than the DOM, they shall serve as the search committee. When a DOM vacancy occurs, they shall nominate a search committee and present it to the Executive Committee.

G. The Personnel Committee shall handle grievances as outlined in the grievance policy.

ARTICLE XII. THE ASSOCIATIONAL COUNCIL

The ASSOCIATIONAL COUNCIL shall be composed of the Director of Missions, the Moderator, the Vice Moderator, the Program Leaders: Sunday School, Discipleship Director, Woman's Missionary Union, Brotherhood Director, Chairman of Deacons, Missions Development Director, Chairman of Evangelism, Chairman of the Finance Committee, Vacation Bible School Director, Youth Director, Director of the Singles, Director of the Senior Adults, and Music Director. The Director of Missions is to serve as Chairman and a secretary shall be elected from the group.

The purpose of the council is to coordinate the planning of the various programs of the Association, to develop an Associational calendar, and to give mutual support to the various organization and program units in carrying out their assignments.

The council shall meet quarterly.

ARTICLE XIII. THE ASSOCIATIONAL PASTORS' CONFERENCE

The Associational Pastors' Conference provides regular meetings for the Baptist ministers of the Association. The purpose of the conference is for fellowship and mutual support, for doctrinal and professional discussion and for promotion of church, Associational and other denominational programs. The conference is not an administrative or executive body.

ARTICLE XIV. JOB DESCRIPTION, DIRECTOR OF MISSIONS

SECTION 1. Title and Functions.

A. Position Title. This position shall be known as the Director of Missions for the Tuckaseegee Baptist Association.

B. Basic Functions. The Director of Missions shall serve as minister to the churches and church leaders of the Tuckaseegee Baptist Association, as mission strategist for the Association, as chief administrative officer for the Association, and as a general leader of the Association.

SECTION 2. Responsibilities.

A. Minister to Churches and Church Leaders.

1. The Director of Missions shall serve as pastor to the pastors of the Association. Upon request, the Director of Missions shall provide counseling and consultation for pastors regarding spiritual, vocational, congregational, personal or family concerns. The Director of Missions shall be available to assist pastors considering a move, shall orient new pastors to the Association, shall develop systems of pastoral support and fellowship, and shall provide growth opportunities for pastors.

2. Upon request, the Director of Missions shall assist and counsel pastors and church leaders regarding ministries, programs and procedures within the churches, including but not limited to building planning, budget procedures, long range or strategy planning, curriculum evaluation or review, issues of church policy and organization, church-community surveys, outreach, and spiritual growth.

3. Upon request, the Director of Missions shall assist and counsel churches regarding the calling of pastors or church staff, conflicts between a pastor and church, or conflicts within a church's fellowship. The Director of Missions shall assist churches without a pastor in their ministries and programs at their request and shall provide advice for persons considering a Christian vocation.

4. The Director of Missions shall be available upon request to preach or teach in and for churches on such occasions as revivals, pulpit supply, study courses, stewardship or missions emphasis, promotion or recognition assemblies and services, special day addresses, Vacation Bible School, and similar events.

5. The Director of Missions shall take the initiative to regularly visit churches for worship and fellowship, taking care to treat all churches as equal partners in the Association.

6. The Director of Missions shall develop opportunities to foster fellowship and mutual commitment between and among the churches.

B. Mission Strategist.

1. The Director of Missions shall encourage churches to develop and maintain a missions perspective and to extend their ministries and outreach beyond the local church field and community through broader involvement and cooperation with other churches in missions activities.

2. The Director of Missions shall interpret to the churches the needs of persons and groups within the Association's area and shall lead the Association to start new churches or ministry activities appropriate to the needs.

3. The Director of Missions shall encourage and lead volunteer involvement in mission activities beyond the Association's boundaries, such as home and foreign missions partnerships and disaster relief.

4. The Director of Missions shall interpret to the Association the mission work of the churches and conventions of the denomination at the state and national levels and shall encourage churches to support such work with their prayers, finances and personal commitment.

C. Chief Administrative Officer.

1. The Director of Missions shall administer all policies and instructions committed to that office by the Association in annual session or by the Executive Committee.

2. The Director of Missions shall work with the Executive Committee to plan, organize, coordinate, communicate and evaluate the total work of the Association.

3. The Director of Missions shall work with and assist Associational officers, committees and program leaders to implement the specific objectives of the Association and to communicate these activities to the churches and encourage their involvement.

4. The Director of Missions shall serve as an ex officio member of all committees and program departments of the Association.

5. The Director of Missions shall publish a regular Associational news medium to promote the work and fellowship of the Association among the churches and shall otherwise communicate with the churches as required.

6. The Director of Missions shall supervise the Associational office staff and any volunteers or other paid employees, full or part time, who are directly involved in ministries or activities sponsored by the Association.

7. The Director of Missions shall act as office and property manager and purchasing agent for the Association in all matters not assigned to the Trustees of the Association.

D. General Leader of the Association.

1. The Director of Missions shall interpret the work of the Association in the churches.

2. The Director of Missions shall maintain relationships with pertinent Baptist conventions and bodies, and especially with those denominational offices charged with Associational development and support, informing those bodies of the needs and potentialities in the Association and interpreting the overall work of the denomination to the churches.

3. The Director of Missions shall relate to other Christian and service organizations, such as local relief and assistance groups, hospital chaplaincy programs, groups that minister to the homebound or terminally ill, ministerial conferences or support groups, and similar organizations, as appropriate.

4. The Director of Missions shall relate to and represent the work of the Association to various business, social, educational, governmental and civic groups.

5. The Director of Missions shall act as chief public relations and information officer for the Association, promoting its work to the general public through the various communications media and responding to inquiries and requests for information as required.

SECTION 3. Terms of Employment.

A. Employment. The Director of Missions is employed by the Tuckaseegee Baptist Association.

B. Call, Termination and Interim.

1. A person shall be called to the office of Director of Missions according to the following procedures:

a. When a vacancy occurs in the office of Director of Missions, the Personnel Committee shall nominate a search committee to be elected by the Executive Committee. Election of the search committee shall take place within 30 days of the occurrence of the vacancy. If a regular meeting of the Executive Committee is not scheduled within 30 days, a special meeting shall be called by the Moderator. Executive Committee members shall be given two weeks' written notice of the names of the nominees to serve on the search committee and the date, time and place of the meeting.

b. Once elected, the search committee shall solicit and screen candidates according to qualifications and procedures which the committee shall determine. The search committee shall recommend and present one candidate for election by the Association.

c. Election of the candidate by the Association shall take place within 30 days of the search committee's decision to recommend. If the annual session of the Association is not scheduled within 30 days, a special session of the Association shall be called by the Moderator. The Association shall be given two weeks' written notice of the name of the candidate and the date, time, and place of the meeting.

d. Election of the candidate shall be by majority vote. If the candidate fails to receive a majority vote, the search committee shall be immediately dissolved and the Personnel Committee shall begin the process over again.

2. The term of service of the Director of Missions shall be indefinite. Employment of the Director of Missions may be terminated according to the following procedures:

a. The Director of Missions may resign by giving written notice 60 days in advance. The resignation may be accepted on behalf of the Association by the Executive Committee in regular or called session. By mutual agreement of the Director of Missions and the Executive Committee, the period of 60 days' notice may be waived.

b. The Director of Missions may be involuntarily terminated by the Association in annual or called session.

(1) No final action to terminate the Director of Missions shall occur unless both the Director of Missions and the Association have endeavored to resolve any existing conflict by lesser means. In addition, no final action to terminate the Director of Missions shall occur without prior investigation by the Personnel Committee according to established grievance procedures. The Personnel Committee shall then make a report of its findings to the Association. The Association shall consider, but shall not be bound by or required to follow, the recommendations of the Personnel Committee. If such an investigation and report has not occurred, any action to terminate the Director of Missions shall be referred to the Personnel Committee for investigation before final action is taken.

(2) Action by the Association to terminate the Director of Missions, whether in annual or called session, shall require 30 days' written notice to the Association following completion of the Personnel Committee's investigation. Action to terminate shall be by majority vote.

(3) If the Association in session votes to terminate, the Director of Missions shall receive full pay and benefits for a period of 60 days following the effective date of the termination.

3. When a vacancy occurs in the office of Director of Missions, the Executive Committee may elect an Interim Director of Missions according to the following procedure:

a. The Personnel Committee shall recommend a candidate, negotiate terms of employment, and present

the recommendations to the Executive Committee for approval. Such election may take place at the same time and in the same manner as election of the search committee, or at any other appropriate time.

b. The Personnel Committee shall supervise the work of the Interim Director of Missions. Authority to extend, terminate, or otherwise change the terms of employment of the Interim Director of Missions shall be retained by the Executive Committee.

C. Accountability.

1. The Director of Missions shall be supervised by the Personnel Committee acting on behalf of the Association.
2. The Personnel Committee shall arrange for an annual evaluation of the Director of Missions.
3. The Personnel Committee shall establish a grievance policy to provide an orderly and appropriate process to hear grievances and complaints against the Director of Missions by members or churches of the Association.

D. Pay and Benefits.

1. Salary, retirement, insurance and other financial benefits for the Director of Missions shall be proposed by the Budget and Finance Committee and established by the Association in the annual budget. The Budget and Finance Committee shall solicit recommendations concerning pay and benefits for the Director of Missions from the Personnel Committee, but shall not be bound to accept those recommendations.
2. Travel allowance for the Director of Missions shall be deemed by the Association to be a business expense and not a personal benefit for the Director of Missions.
3. The Director of Missions shall receive two weeks paid vacation annually. The period of two weeks shall incorporate ten working days, including two Sundays. Unused vacation shall not accrue to the following year.
4. The Director of Missions shall receive sick leave at the rate of one day per month, accruing on the first day of the month, not to exceed 120 working days. Additional sick leave may be credited against future months. If the Director of Missions is involuntarily terminated by the Association, any unused sick leave accrued shall be financially reimbursed to the Director of Missions in addition to the 60 days' pay and benefits required by the act of termination.
5. The Director of Missions shall be granted one day off each week in addition to Saturday.
6. The following holidays shall be observed: New Year's Day, Easter Monday, Memorial Day, July 4, Labor Day, Thanksgiving Thursday and Friday, and December 25 and 26 at Christmas.
7. The Association acknowledges the flexibility of schedule required by the Director of Missions. The Director of Missions' time shall be organized in a professional manner, with the work schedule devoted to activities that will benefit the work of the Association, whether in the office or on the field and whether during the normal work day or at night. The Director of Missions shall establish office hours for the office secretary and shall be available, either through personal office hours or some other established procedure, to any in the Association needing assistance.
8. The Director of Missions may attend denominational conventions and meetings, continuing education and professional development events, and other assemblies and conferences pertaining to the work of the office. The Association through its annual budget may reimburse the Director of Missions for expenses incurred while attending such meetings.
9. The Director of Missions may use up to three weeks of paid leave annually to lead or participate in revivals, world missions conferences, and similar meetings outside the Association, which result in an honorarium or other reimbursement above and beyond expenses. The Director of Missions may lead revivals and conferences within the Association as schedule permits, such activities being included in the job responsibility of minister to the churches of the Association.
10. The Director of Missions may serve as interim pastor of a church or churches in the Association. Such activity may not exceed three months in a given calendar year without prior approval of the Personnel Committee. The Director of Missions may engage in pulpit supply and similar activities as schedule permits, such activities being included in the job responsibility of minister to the churches of the Association.
11. The Director of Missions may lead or participate in mission trips, mission partnerships, disaster relief, and other direct mission opportunities outside the Association, such activities being included in the job responsibility of mission strategist for the Association. Such activities may not exceed three weeks in a given calendar year without prior approval of the Personnel Committee.
12. The Director of Missions shall keep a record of leave and time spent off the Associational field, including vacation, sick leave, conventions and conferences, continuing education events, revivals and similar meetings, and mission trips. The record shall be submitted to and maintained by the Treasurer of the Association.
13. The Director of Missions shall be free to use off duty time to engage in personal activities and pursuits. Such activities shall not interfere with the professional responsibilities or activities and meetings that require the presence of the Director of Missions. The Director of Missions shall be aware that all personal activities reflect on the office and the job responsibility of general leader of the Association.
14. No honorarium shall be expected or required for any service performed by the Director of Missions in conjunction with official duties. However, any individual, group or church is free to present an honorarium if they so

desire, and such may be retained by the Director of Missions and not submitted to the Association.

SECTION 4. Adoption.

A. This job description supersedes, repeals and takes the place of any conflicting articles or statements in this Constitution or other documents of the Association.

B. The Personnel Committee shall be responsible to maintain, update and revise this job description as required, making recommendations to the Association for approval as they are needed.

ARTICLE XV. AMENDMENTS

The constitution may be amended at any annual meeting of the Association by a two-thirds majority of the messengers present and voting, provided the amendment has been presented to the Constitutional Committee at least 10 days prior to the annual meeting and presented to the Association in printed form on the first day of the annual meeting to be voted on the second day.

ARTICLE XVI. NON-PROFIT STATUS

The Tuckaseegee Baptist Association, Inc. is organized exclusively for charitable, religious, and educational purposes, including, for such purposes, the making of distributions to organizations that qualify as exempt organizations under Section 501(c)(3) of the Internal Revenue Code of 1986.

No part of the Tuckaseegee Baptist Association, Inc. shall inure to the benefit of its' members, directs, officers, or other persons except that the organization shall be authorized and empowered to pay reasonable compensation for services rendered and to make payments and distributions in furtherance of the exempt purposes of the organization.

In the event of dissolution, the residual assets of the Tuckaseegee Baptist Association, Inc. will be turned over to one or more organizations with similar purposes which are exempt as organizations described in Section 501(c)(3) of the Internal Revenue Code of 1986.

ASSOCIATIONAL DIRECTORY 2000-2001

STAFF

Interim Director of Missions, Rev. Claude C. Conard 160 Leatherwood Rd. Waynesville, NC 28786	456-9336
Secretary, Mrs. Amanda Bialy 1683 Greens Creek Rd. Sylva, NC 28779	586-8406

GENERAL OFFICERS

Moderator, Rev. Mike Dellinger P. O. Box 34, Webster, NC 28788	586-3289
Vice-Moderator, Mr. Clemmy Queen 220 Frosty Ridge Rd., Sylva, NC 28779	586-8616
Clerk, Mrs. Amanda Bialy 1683 Greens Creek Rd., Sylva, NC 28779	586-8406
Assistant Clerk, Mrs. Betty Greene 388 Brooks Branch Rd., Sylva, NC 28779	586-9759
Treasurer, Mr. Jesse Flake 312 Pressley Creek Rd., Cullowhee, NC 28723	293-9413
Assistant Treasurer, Mrs. Jo Medford 1699 Dicks Creek Rd., Whittier, NC 28789	586-2319
Historian, Mrs. Joyce Crowder 3445 Cullowhee Mountain Rd., Cullowhee, NC 28723	293-3222
Historian, Mrs. Ann Cabe 33 Dillsboro Rd., Sylva, NC 28779	586-4915
Parliamentarian, Rev. Robert Blanton 1066 Posey Blanton Rd., Sylva, NC 28779	586-5688
Assistant Parliamentarian, Rev. Al Cauley 265 Blackwood Rd., Cullowhee, NC 28723	293-9135

TRUSTEES

Mr. Arnold Buchanan 1878 Canada Rd., Cullowhee, NC 28783	293-3923
Mrs. Junetta Pell 21 Cowan Valley, Sylva, NC 28779	586-2435
Mrs. Irene Hooper P. O. Box 2317, Cullowhee, NC 28723	293-5456

REPRESENTATIVES

Annuity Board, Rev. Cecil Frady 765 Fred Smith Road, Tuckasegee, NC 28783	293-9677
--	----------

Baptist Childrens' Homes of N.C., Mr. Mike Moses PO Box 2204, Cullowhee, NC 28783.	586-4423
Baptist Hospital, Mr. Gene Middleton 253 Dills Branch Rd., Sylva, NC 28779.	586-6291
Baptist Retirement Homes of N.C., Mr. Frank Crawford P. O. Box 1041, Sylva, NC 28779.	586-2595
Biblical Recorder, Mr. Ronnie Henderson Rt. 1, Box 243, Whittier, NC 28789.	497-9887
Christian Higher Education, Rev. Steve Jamison 89 Hillcrest St., Sylva, NC 28779.	586-0552
Truett Camp, Mr. James Haskett Rt. 3, Sylva, NC 28779.	586-4609

ASSOCIATIONAL PROGRAM LEADERS

Sunday School Director, Mr. Dennis Ensley 1586 Fisher Creek Rd., Sylva, NC 28779.	586-5086
Vacation Bible School Director, Mrs. Betty Greene 338 Brooks Branch, Sylva, NC 28779.	586-8616
Discipleship Director, Rev. Roy Burnett 928 Rufus Robinson Rd., Sylva, NC 28779.	586-6819
Music Director, Rev. Harry Vance 177 Mica Ridge, Sylva, NC 28779.	586-4898
Pianist, Mrs. Janice Burnette 928 Rufus Robinson Rd., Sylva, NC 28779.	586-6819
Pianist, Mrs. Betty Greene 388 Brooks Branch Rd., Sylva, NC 28779.	586-8616
Brotherhood Director, Mr. Lindon Allen 1206 Barkers Creek Rd., Sylva, NC 28779.	586-6833
Youth Director, Amanda Dills 5 Twin Fiddler Rd., Cullowhee, NC 28723.	293-9884
Youth Director, Josh Hyde PO Box 511, Webster, NC 28788.	586-8338
Senior Adult Director, Mrs. Eloise Shuler 757 Buff Creek Rd., Sylva, NC 28779.	586-6080
Singles Ministry Directors, Mr. Eric & Norma Lovedahl 427 Little Savannah Rd., Sylva, NC 28779.	586-0253
Seminary Extension Director, Dr. Jim Dean 193 Rocky Lane, Sylva, NC 28779.	586-3402
WMU Director, Mrs. Lois Ensley 1586 Fisher Creek Rd., Sylva, NC 28779.	586-5068
WMU Director, Mrs. Nelda Reid 5107 US Hwy. 74 E., Sylva, NC 28779.	586-9538
Assistant WMU Director, Sara Davis PO Box 1914, Sylva, NC 28779.	586-5400

WMU Mission Involvement Consultant, Mrs. Brenda Buchanan PO Box 1219, Cashiers, NC 28717	293-3923
Assistant WMU Mission Involvement Consultant, Mrs. Virginia Pangle PO Box 99, Dillsboro, NC 28725	586-4896
WMU Secretary/Treasurer, Mrs. Hazel Monteith 119 Griffin St., Sylva, NC 28779	586-2640
Women on Mission Consultant, Mrs. Janice Burnette 928 Rufus Robinson Rd., Sylva, NC 28779	586-6819
Assistant Women on Mission Consultant, Viola Bryson PO Box 6, Glenville, NC 28736	743-2146
GA/Children in Action Consultant, Mrs. Lisa Dean 193 Rocky Lane, Sylva, NC 28779	586-3402
Assistant GA/Children in Action Consultant, Mrs. Merry Broughton 267 Johnny Stanfield Rd., Franklin, NC 28734	369-7912
Mission Friends Consultant, Mrs. Geraldine Jones PO Box 224 Sylva, NC 28779	586-0918
Assistant Mission Friends Consultant, Mrs. Wanda Mills 5105 US Hwy. 74 E., Sylva, NC 28779	586-5270
Acteens Consultant, Lana Ledbetter 4673 Highway 107 North, Glenville, NC 28736	743-2123

APPOINTED COMMITTEE 2001-2002

Committee on Committees

Art Keener, Webster
Mark Haskett, East Sylva
Joe Pressley, Cullowhee Valley
Stella Parker, Tuckasegee
Matt Ledbetter, Hamburg

APPOINTED COMMITTEE 2001

Resolutions Committee

Steve Jamison, Shoal Creek - Chair
Steve Bialy, Greens Creek
Dawn Shropshire, Webster

Associational Council, 2001-2002

General Officers

Moderator	Mike Dellinger
Vice Moderator	Clemmy Queen
Clerk	Amanda Bialy
Assistant Clerk	Betty Greene
Treasurer	Jesse Flake
Assistant Treasurer	Jo Medford
Historian	Joyce Crowder
Parliamentarian	Robert Blanton
Assistant Parliamentarian	Al Cauley

Program Leaders

Sunday School Director	Dennis Ensley
Discipleship Director	Roy Burnette
Music Director	Harry Vance
Musician	Janice Burnett/ Betty Greene
Evangelism Committee Chairman	Rich Peoples
Seminary Extension Director	Jim Dean
Mission Committee Chairman	Shirley Kool
Director of Missions	Claude Conard
Trustees	Arnold Buchanan(04) Junetta Pell (02) Irene Hooper (03)
Pastor Conference President	Terry Wehunt
Youth Directors	Amanda Dills & Josh Hyde
Stewardship Director	Gerald Morris
Vacation Bible School Director	Betty Greene
Woman's Missionary Union Directors	Lois Ensley & Nelda Reid
Brotherhood Director	Lindon Allen
Senior Adult Director	Eloise Shuler
Singles Ministry Director	Eric & Norma Lovedahl
Pastor, Deacon, Spouse Fellowship Director	Art Keener

Associational Representatives

Truett Camp	Lewis Keener
Baptist Children's Homes of NC	Mike Moses
NC Baptist Hospital, Inc.	Viola Bryson
Baptist Retirement Homes of NC, Inc.	Frank Crawford
Biblical Recorder	Ronnie Henderson
Christian Higher Education	Steve Jamison
Annuity Board	Cecil Frady

PASTORS

Balsam	Johnny Swanger	828-452-4718	PO Box 280, Balsam 28707
Big Ridge	Don Coggins	828-586-6153	4224 Big Ridge Rd, Glenville 28736
Black Mountain	Roger Stewman	828-586-5325	285 Cheerful Cove, Cullowhee 28723
Buff Creek	Gerald Morris	828-586-5784	1274 Mineral Spr Dr, Sylva 28779
Calvary	Dennis Burrell	828-586-6235	204 Mayflower Ln, Sylva 28779
Cashiers	Art Fowler	704-743-3182	PO Box 336, Cashiers 28717
Cullowhee		828-293-9024	PO Box 37, Cullowhee 28723
Cullowhee Valley	Terry Taylor	828-497-9597	PO box 2602, Cullowhee 28723
Deitz Memorial	Robert Blanton	828-586-5688	761 E Ford Rd, Sylva 28779
Dicks Creek	Rick Conner	828-586-2206	1630 Dicks Creek Rd, Whittier 28789
East Fork	Brian Bishop	828-586-3935	19 Woodrow Deitz Rd, Sylva 28779
East Sylva	Charles Dean	828-586-5159	PO Box 516, Sylva 28779
East Sylva	Asso. Jim Dean	828-586-3402	PO Box 516, Sylva 28779
Faith	Gene Hawkins	828-524-4613	PO Box 3608, Cullowhee 28723
Green Creek	Steve Bialy	828-586-8406	1683 Greens Creek Rd, Sylva 28779
Hamburg	Matthew Ledbetter	828-743-2123	PO Box 217, Glenville 28736
Hyatts Chapel	Steve Webb	828-293-5583	23 Whirlwind Dr, Whittier 28789
Jarrett Memorial	Roy Burnette	828-586-6819	PO Box 40, Dillsboro 28725
Liberty	J.E. Smith	704-287-7609	PO Box 2134, Sylva, 28779
Little Savannah	Kent Lowdermilk	828-586-5261	2390 Little Savannah, Sylva 28779
Locust Field	Charles Carnes	828-586-6492	PO Box 992, Dillsboro 28725
Long Branch	Avery Brown	828-586-6077	729 Thornhill Dr, Sylva 28779
Lovedale	Mike Farmer	828-586-6530	160 Lovedale Rd, Sylva 28779
Lumberton	Al Cauley	828-293-9135	331 Blackwood Rd, Cullowhee 28723
Moses Creek	Dillard Moore	828-586-6082	407 Sunrise Park St, Sylva 28779
Mount Pleasant	Frank Brooks	828-586-3299	PO Box 1924, Sylva 28779
New Hope	Mike Moore	828-497-9860	PO Box 245, Sylva 28779
New Savannah	Steve Alexander	828-586-9840	33 Dillsboro Rd, Sylva 28779
Ochre Hill	Terry Wehunt	828-586-6993	5059 US 74 E, Sylva 28779
Old Savannah	David Souderes	828-456-3174	642 Sutton Branch Rd, Sylva 28779
Pine Creek	Wayne Price	828-349-9079	4484 Pine Creek Rd, Cullowhee 28723
Promise Land	Larry Bryson	828-293-9461	PO Box 410, Tusahaesee 28783
Rockdale	Randy Hyatt	828-456-4354	36 Tanglewood Dr, Whittier 28789
Scotts Creek	Richard Peoples	828-586-2631	97 Steeple Rd, Sylva 28779
Shoal Creek	Steve Jamison	828-586-0552	184 Shoal Cr Ch Lp, Whittier 28789
Sols Creek	Jim Ed Powell	828-293-9310	721 Sols Cr Ch Rd, Cullowhee 28723
Speedwell	Billy Stiles	828-456-9394	1372 Pressley Cr, Cullowhee 28723
Sylva First	Chris Ehrlich (Ed)	828-586-2095	PO Drawer 1024, Sylva 28723
Tilley Creek	Clifford Parker	828-586-9647	65 Living Water Dr, Cullowhee 28723
Trinity	Bobby Locklear		PO box 335, Balsam 28707
Tuckasegee	Larry Perry	828-586-0655	PO Box 206, Tusahaesee 28783
Unity	Gerald Conner	828-456-8914	50 Casper Dr, Cullowhee 28723
Webster	Michael Dellinger	828-586-3289	PO Box 34, Webster, 28788
Wilkesdale	Terry Jenkins	828-369-9639	143 Sylva Hts, Sylva 28779
Zion Hill	Keith Ashe	828-293-9688	3110 Pumpkintown Rd, Sylva 28779

MINISTER OF EDUCATION

Hamburg	Brenda Jennings	PO Box 217, Glenville 28736
Liberty	Margaret Miller	PO Box 2134, Sylva 28779
Sylva First	Chris Ehrlich	PO Box 1024, Sylva 28779

YOUTH MINISTER

Black Mountain	Sterling Dills	285 Cheerful Cove, Cullowhee 28723
Buff Creek	Gracella Morris	1274 Mineral Sprg Dr, Sylva 28779
Calvary	Sandra Bowers	204 Mayflower LN, Sylva 28779
Cashiers	Ron Fowler	PO Box 336, Cashiers 28717
Cullowhee	Norma Lovedahl	PO Box 37, Cullowhee 28723
East Sylva	Jim Dean	PO Box 516, Sylva 28779
Faith	Mitch Hyde	4812 Hwy US 441 S, Cullowhee 28723
Greens Creek	Amanda Bialy	1683 Greens Creek Rd, Sylva 28779
Hamburg	Sandra Bryson/Krista Valentine	PO Box 217, Glenville 28736

Liberty	Mary Fowler		PO Box 2134, Sylva 28779
Long Branch	Donnette Carnes		PO Box 161, Dillsboro 28725
Moses Creek	Kelli Watson	828-586-0930	35 Scenic Dr, Sylva 28779
Mount Pleasant	James/Nancy Conner		PO Box 1924, Sylva 28779
New Hope	Emery Brooks		PO Box 245, Sylva 28779
Ochre Hill	Alicia/Matt Maney		5059 US 74 E, Sylva 28779
Old Savannah	Danny/Wanda Hall		642 Sutton Br Rd, Sylva 28779
Promise Land	Micky Mace		PO Box 410, Tuckasegee 28783
Shoal Creek	Bobbie Henderson	828-497-1442	184 Shoal Cr Ch Lp, Whittier 28789
Tuchasegee	Wanda Crisp	828-293-9260	PO Box 206, Tuckasegee 28783

SECRETARY

Black Mountain	Doris Ammons/Shelia Nicholson		285 Cheeful Cove, Cullowhee 28723
Buff Creek	Maxine Messer/Virginia Mull		1274 Mineral Sprg Dr, Sylva 28779
Calvary	Trudy Allison/Kelli Burrell		204 Mayflower Ln, Sylva 28779
Cashiers	Tracey Fowler		PO Box 40, Cashiers 28717
Cullowhee	Etheree Chancellor	293-9024	PO Box 37, Cullowhee 28723
Cullowhee Valley	Gladys German		PO Box 2602, Cullowhee 28723
Deitz Memorial	Randal Buchanan	828-586-4880	761 E Fork Rd, Sylva 28779
Dicks Creek	Gail Clawson/Kathy Stiles		24 Wild Rose Dr, Whittier 28789
East Fork	Barbara Cabe	828-586-6728	19 Woodrow Dietz Rd, Sylva 28779
East Sylva	Jo Medford		PO Box 516, Sylva 28779
Faith	Suzanne Hyde	828-586-3713	4812 Hwy US 441 S, Cullowhee 28723
Greens Creek	Jo Ann Garner	828-586-4698	310 Sugar Fork Rd, Sylva 28779
Hamburg	Lana Ledbetter		PO Box 217, Glenville, 28736
Hyatts Chapel	Jane Ward		23 Whirlwind Dr, Whittier 28789
Jarrett Memorial	Betty Parris		PO Box 40, Dillsboro 28725
Liberty	Barbara Austin/Robbie Bryson		PO Box 2134, Sylva 28779
Locust Field	Mary Sue Coggins		PO Box 99, Dillsboro 28725
Long Branch	David Dalton/Clara Wilkey-Cogdill		Long Branch Road, Sylva 28779
Lovedale	Sue Painter/Sarah Parker		160 Lovedale Rd, Sylva 28779
Lumberton	Fannie Mae Hooper		245 Hooper Cmtr Rd, Cullowhee 28723
Mount Pleasant	Carol Cagle		PO Box 1924, Sylva 28779
New Hope	Diane Dillard	828-586-6779	545 Evans Rd, Sylva 28779
New Savannah	Cathy Foxx/Sara Queen		33 Dillsboro Rd, Sylva 28779
Ochre Hill	Cheryl Blanton		14 N-orman Dr, Sylva 28779
Pine Creek	Barbara Henderson		448 Pine Creek, Cullowhee 28723
Scotts Creek	Carolyn Culp	828-586-2631	97 Steeple Rd, Sylva 28779
Shoal Creek	Vividean Kinsland	828-497-1442	184 Shoal Cr Ch Lp, Whittier 28789
Sols Creek	Osal Queen	828-293-3036	748 Sols Cr Ch, Tuckasegee, 28783
Speedwell	Becky/Dana Wilkes		1372 Pressley Cr, Cullowhee 28723
Sylva First	Betty Blanton/Pat Mason		PO Drawer 1024, Sylva 28779
Tilley Creek	Geralene Ashe		65 Living Water Dr, Cullowhee 28723
Tuckasegee	Randy Anders	828-293-9260	PO Box 206, Tuckasegee 28783
Unity	Marian Aldridge		50 Casper Dr, Cullowhee 28723
Webster	Diann Burgess		PO Box 34, Webster, 28788
Wilkesdale	Linda Proctor	828-586-5868	PO Box 1814, Sylva 28779
Zion Hill	Betty Bishop	828-293-9688	3110 Pumpkintown Rd, Sylva 28779

CLERK

Black Mountain	Betty Littrell	828-293-5129	285 Cheerful Cove, Cullowhee 28723
Buff Creek	Heather Mathis	828-586-5784	1274 Mineral Sprg Dr, Sylva 28779
Calvary	Ruby Allison	828-586-4949	204 Mayflower Ln, Sylva 28779
Cashiers	Cindy Fowler	828-743-3040	PO Box 336, Cashiers 28717
Cullowhee	Etheree Chancellor	828-293-9024	148 Central Dr, Cullowhee 28723
Cullowhee Valley	Elaine Haskett	828-293-9436	1382 Pressley Cr, Cullowhee 28723
Deitz Memorial	Teresa Buchanan	828-586-4880	761 E Fork Rd, Sylva 28779
Dicks Creek	Gail Clawson	828-586-8464	24 Wild Rose Dr, Whittier 28789
East Fork	Barbara Cabe	828-586-6728	19 Woodrow Deitz Rd, Sylva 28779
East Sylva	Jo Medford		PO Box 516, Sylva 28779
Faith	Suzanne Hyde	828-586-3713	4812 Hgwy US 441 S, Cullowhee 28723
Hyatts Chapel	Margaret Gunter		23 Whirlwind Dr, Whittier 28789

Jarrett Memorial	Joan Shephard		PO Box 40, Dillsboro 28725
Liberty	Robbie Bryson		PO Box 2134, Sylva 28779
Little Savannah	Darlene Taylor	828-586-5261	2390 Little Savannah, Sylva 28779
Locust Field	Rita Norris		PO Box 99, Dillsboro, 28725
Long Branch	Clara Wilkey-Cigdill	586-5177	729 Thron Hill Rd, Sylva 28779
Lovedale	Hilda Hoyle	828-586-2433	160 Lovedale Rd, Sylva 28779
Moses Creek	Arthur Stephens	828-586-6479	95 Genesis Trail, Sylva 28779
New Hope	Donal Shuler		PO Box 245, Sylva, 28779
New Savannah	Anne Cabe	828-586-4915	33 Dillsboro Rd, Sylva 28779
Ochre Hill	Nancy R Nichols		5059 US 74 E, Sylva 28779
Old Savannah	Donna Farmer		642 Sutton Branch, Sylva 28779
Pine Creek	Barbara Henderson		4484 Pine Creek Rd, Cullowhee 28723
Rockdale	Jennie Miller	828-586-6392	35 Tanglewood Dr, Whittier 28789
Scotts Creek	Eleanor Berry	828-586-2631	97 Steeple Rd, Sylva 28779
Shoal Creek	Yancy Sanchez		184 Shoal Cr Ch Lp, Whittier 28789
Speedwell	Ida Mae Wilkes	828-293-5327	1372 Pressley Cr, Cullowhee 28723
Sylva First	Jennie Larrison		PO Box 1024, Sylva 28779
Tilley Creek	Geralene Ashe		65 Living Water Dr, Cullowhee 28723
Tuckasegee	Sharon Painter	828-293-9260	PO Box 206, Tuskasegee 28723
Unity	Gerald Conner		50 Casper Dr, Cullowhee 28723
Webster	Dawn Shropshire	828-586-4459	1955 Webster Rd, Webster 28788
Wilkesdale	Wanda Henson	828-586-6069	PO Box 1816, Sylva 28779

ORGAN/PIANIST

Black Mountain	Ruth Thompson / Mary Stephens
Buff Creek	Charlie McClure / Shirley Beasley
Calvary	Susanne Allison
Cashiers	Marlene Fowler / Marvetta Mills
Cullowhee	Tammy Gaetano
Cullowhee Valley	Elaine Haskett
Deitz Memorial	Katrinka Mathis
Dicks Creek	Gail Clawson
East Fork	Doris Frady
East Sylva	Jan McMahan / Kathy McConnell
Greens Creek	Joyce Green / Belinda Allison
Hamburg	Lisa Corbin
Hyatts Chapel	Jennifer Webb
Jarrett Memorial	Janice Burnette
Liberty	Steve Hines
Locust Field	Katrina Gates
Lovedale	Shelia Frizzell / Elaine Melton
Moses Creek	Charles Stephens
Mount Pleasant	Patsy Mathis
New Hope	Sue Norman / Aletta Buchanan
New Savannah	Kathy Alexander
Ochre Hill	Jessie Jones / Jean McMahan
Old Savannah	Jeri Hensley / Maureen Sutton
Pine Creek	Linda Moss
Promise Land	Wallace Swann
Rockdale	Kim Saunooke / Irene Brooks
Scotts Creek	Frank Berry / Rhonda Woodard
Shoal Creek	Bobbie Henderson
Speedwell	Dana Wilkes
Sylva First	Linda Stewart / Donna Depew
Webster	Linda Fisher / Kay Collins
Wilkesdale	Irene Stewart
Zion Hill	Kay Franks

SUNDAY SCHOOL DIRECTOR

Black Mountain	Gary Wood
Buff Creek	Tim Mathis
Calvary	Bill Buchanan
Cashiers	Ed Madden
Cullowhee	Pam Hill
Cullowhee Valley	Roy Haskett
Dicks Creek	Willis Brown
East Fork	Ray Knowles
East Sylva	Dennis Ensley
Faith	David Proffitt
Greens Creek	Allen Garner
Hamburg	Verner Rice
Hyatts Chapel	Cance Carnes
Jarrett Memorial	Perry Sutton
Liberty	Linda Mingus
Little Savannah	Mike Taylor
Locust Field	Roy Young
Long Branch	Roy Dalton
Lovedale	Guy Dillard
Lumberton	Fannie Mae Hooper
Moses Creek	Jason Watson
Mount Pleasant	Chas Mathis
New Hope	Chris Ray
New Savannah	Eldon Cabe
Ochre Hill	Russell Ensley
Old Savannah	James Mason
Pine Creek	Leland Cooper
Promise Land	Andy Nicholson
Rockdale	Kenneth Miller
Scotts Creek	Jim Hage
Shoal Creek	Jean Bushyhead
Speedwell	Lenn Wilkes
Sylva First	Lee Minor
Tilley Creek	Steven Buchanan
Tuckasegee	Raye Hall
Unity	Bobby Watson
Webster	Deanna Wright
Wilkesdale	Alvin Henson
Zion Hill	James Buchanan

DISCIPLESHIP TRAINING DIRECTOR

Calvary	Marshal Bradley
Cullowhee Valley	Shirley Pressley
East Sylva	James Dean
Faith	Mitch/Suzanne Hyde
Greens Creek	Jo Ann Garner
Hamburg	Jeff Davis
Jarrett Memorial	Ray Buchanan
Little Savannah	J.E. Wheatley
Long Branch	Steve Lillard
New Hope	Mike Moore
Wilkesdale	Christine Painter

BROTHERHOOD DIRECTOR

Buff Creek	Gerald Morris
Cashiers	James O'Berry
Faith	John Brooks
Hamburg	Wayne Bryson
Mount Pleasant	Chas Mathis
Scotts Creek	Keith Henry
Sylva First	Philip Stack

WMU DIRECTOR

Buff Creek	Eloise Shuler
Cashiers	Donnie Madden
Cullowhee	Polly Rice
East Sylva	Lois Ensley
Faith	Mavis Hughey
Greens Creek	Joyce Green
Hamburg	Judy Smathers
Jarrett Memorial	Audrey Buchanan
Liberty	Wilma Simpson
Lovedale	Freda Queen
Mount Pleasant	Debbie Hoyle
New Hope	Teresa Wood
New Savannah	Cathy Farmer
Ochre Hill	Lee Anne Burrell
Old Savannah	Reva Lewis
Scotts Creek	Jean Keener
Shoal Creek	Esther Cole
Sylva First	Sarah Davis
Wilkesdale	Evelyn Barnes
Zion Hill	Helen Bowers

DEACON CHAIRMAN

Black Mountain	Lonnie Dills
Buff Creek	B. T. Greene
Calvary	Allen Bradley
Cashiers	Odell Hunter
Cullowhee	Charles Hill
Cullowhee Valley	Roy Haskett
Deitz Memorial	Grover Deitz
Dicks Creek	Willis Brown
East Fork	Carlin Cabe
East Sylva	Dennis Ensley
Faith	Randy Crawford
Hyatts Chapel	Doyle Gunter
Jarrett Memorial	Perry Sutton
Liberty	Dan Bryson
Little Savannah	J. E. Wheatley
Lovedale	David Monteith
Lumberton	Fred Houston
Moses Creek	Earl Stephens
Mount Pleasant	Dennis Mathis
New Hope	Lee Ensley
New Savannah	Eldon Cabe
Ochre Hill	Brian Stephens
Old Savannah	Woodrow Frady
Promise Land	Andy Nicholson
Rockdale	Kenneth Miller
Scotts Creek	Don Hensley
Shoal Creek	Harold Bradley
Speedwell	Charles Wilkes
Sylva First	Charles Hager
Tilley Creek	Donald Ashe
Tuckasegee	Brent Stewart
Unity	Bill Dills
Webster	Haven Ensley
Wilkesdale	Alvin Henson
Zion Hill	Buddy Buchanan

TREASURER

Black Mountain	Wanda Dills
Buff Creek	Shirley Beasley
Calvary	Marshal Bradley
Cashiers	Richard Nall
Cullowhee	James Searcy
Cullowhee Valley	Gladys German
Deitz Memorial	Randal Buchanan
Dicks Creek	Gail Clawson
East Fork	Alice Cabe
East Sylva	Tammy Haskett
Faith	Cindy Rigdon
Greens Creek	Aileen Green
Hamburg	Martha Jennings
Hyatts Chapel	Margaret Gunter
Jarrett Memorial	Ray Buchanan
Liberty	Minnie Casey
Little Savannah	Carolyn Lewis
Locust Field	Virginia Pangle
Long Branch	Clara Wilkey-Codgill
Lovedale	Carroll Hall
Lumberton	Fannie Mae Hooper
Moses Creek	Martha Stephens
Mount Pleasant	Carol Cagle
New Hope	Glenda Owens
New Savannah	Sara Queen
Ochre Hill	Linda Stephens
Old Savannah	Woodrow Frady
Pine Creek	Barbara Henderson
Promise Land	Cindy Franks
Rockdale	Gail Allen
Scotts Creek	Frankie Ward
Shoal Creek	Vividean Kinsland
Speedwell	Becky Wilkes
Sylva First	Betty Blanton
Tiley Creek	Geralene Ashe
Tuckasegee	Stella Parker
Unity	Marian Aldridge
Webster	Michael Shropshire
Wilkesdale	Linda Proctor
Zion Hill	Cale Wilson

PRAYER MINISTRY COORDINATOR

Buff Creek	Clara Shuler
Cashiers	Joyce Madden
Greens Creek	Beverly Colvard
Long Branch	Steve Lillard
New Hope	Mildred Harris
New Savannah	Steve Alexander

MUSIC DIRECTOR

Black Mountain	Lebern Dills
Buff Creek	Kim Mathis
Calvary	David Bowers
Cashiers	Rita Fowler
Cullowhee	Steve Baxley
Cullowhee Valley	Shirley Pressley
Deitz Memorial	Grover Deitz
East Fork	Brian Bishop
East Sylva	Mark Haskett
Faith	Robert Palmer
Greens Creek	Amanda Bialy
Hamburg	Kay Jennings
Hyatts Chapel	Kent Moore
Jarrett Memorial	Mike Deitz
Liberty	Margaret Miller
Little Savannah	Cathy Lowdermilk
Locust Field	Scottie Coggins
Long Branch	Harold Wilkey
Lovedale	Eddie Potts
Lumberton	Gladys Cauley
Moses Creek	Arthur Stephens
New Hope	Emery Brooks
Ochre Hill	Margaret Blanton
Old Savannah	John Estes
Promise Land	Melissa Nicholson
Scotts Creek	Mike Nichols
Shoal Creek	Traci Clark
Speedwell	Lenn Wilkes
Sylva First	Robert Holquist
Tilley Creek	Hartwell Patterson
Tuckasegee	Beverly Turrentine
Webster	Tom Collins
Zion Hill	Jimmie Wilbanks

ORDAINED MINISTERS

Cashiers	Jim Steed
Cullowhee	James Pressley
Dicks Creek	Rick Conner
East Sylva	Mike Farmer
	John Reid
	Harry Vance
Faith	Al Cauley
Little Savannah	Ray McCall
Locust Field	Frank Brooks
	Bill Greene
	Hayzen Pangle
Long Branch	James Brown
	Charles Carnes
	Kenneth Carver
New Hope	Emergy Brooks
	Avery Brown
	Hayes Deitz
	Hardin Nicholson
	Clemmy Queen
	Raymond Shuler
New Savannah	Steve Alexander
	Robert Fernandez
Rockdale	Abe Brooks
	William Chapman
Scotts Creek	Wayne Caldwell
	Dan Ward
Speedwell	B. F. Pressley
Sylva First	Harold Anderson
	John Bunn
	Luther Osment
	Ronald Waldrop
Unity	Ernest Ammons
	David Hoyle
	Jim Ed Powell
	Bobby Watson
Webster	Bill Sutton

MINISTERS LICENSED DURING THE YEAR

Old Savannah	Tad Thompson
Webster	Josh Hyde

Changes in Churches

Churches without pastors in the past year:

Cullowhee	Lovedale	Ochre Hill	Sylva First
Dicks Creek	Lumberton	Old Savannah	Tilley Creek
Hamburg	Mt. Pleasant	Rockdale	Tuckasegee
Long Branch	New Savannah	Sols Creek	

Pastors Resigning:

Andy White, Dicks Creek	Lionel Parris, Sols Creek
Lester Sutton, Hamburg	Ed Beddingfield, Sylva First
Cecil Frady, Lovedale	Jack Hinson, Sylva First
Bobby Locklear, Mt. Pleasant	Rick Conner, Tilley Creek
Clifford Parker, Old Savannah	Robert Fernandez, Tuckasegee
Larry Perry, Rockdale	

New Pastors:

Rick Conner, Dicks Creek	Terry Wehunt, Ochre Hill
Matt Ledbetter, Hamburg	David Souderes, Old Savannah
Avery Brown, Long Branch	Randy Hyatt, Rockdale
Al Cauley, Lumberton	J. Ed Powell, Sols Creek
Jack Robinson, Mt. Pleasant	Clifford Parker, Tilley Creek

Interim Pastors:

Harold Anderson, Cullowhee	Steve Alexander, New Savannah
Lester Sutton, Hamburg	Robert Fernandez, Tuckasegee
Avery Brown, Long Branch	Jack Hinson, Sylva First

New Staff Members:

Rita Fowler, Music Director at Cashiers
Chris Ehrlich, Education Director at Sylva First
Josh Hyde, Youth Minister at Webster

Ministers Licensed or Ordained:

Ordained: Steve Alexander, New Savannah
Licensed: Josh Hyde, Webster

Historical Events

Black Mountain - Added bathroom to Fellowship Building.

Calvary - Pictures of church and all pastors and their wives were placed on wall of church. A metal roof was installed on August 25, 2000. A metal utility building was put on the grounds for lawn mower, blower and gasoline. The church plans to give \$100.00 / month for the children of Honduras.

East Sylva - Purchased a new Allen Organ.

Faith - Moved to a new location on Highway 441 South.

Hamburg - Started a Literacy Ministry for Spanish-speaking people.

Jarrett Memorial - Basement remodeled and finished. Installed a new heating and air conditioning system.

New Hope - Ordained Walter Young as deacon.

New Savannah - Completed handicap ramp; began Sunday evening service; began "Kids on Mission" program; began church visitation in community on Wednesday nights; ordained Steve Alexander to Gospel Ministry.

Promise Land - Made addition to the Fellowship Hall.

Shoal Creek - Observed Homecoming in October 2001.

Sylva First - Called a new Minister of Education, Chris Ehrlich.

Webster - Mission Team sent to New York and West Virginia; a Mission Team from Woodsfield, Ohio did work at Webster Baptist; church has a paid secretary & custodian; hosted Pastor, Deacon & Spouse Dinner; attended Promise Keepers; held auction to pay off debt on Fellowship Hall; licensed Josh Hyde for the Gospel Ministry; held a spaghetti dinner fund raiser for Mission Trip to New York; recognized the fall sports teams from Smoky Mtn. High School; play ground area.

Respectfully Submitted,
Joyce Crowder



MEMORIALS



Buff Creek

Mrs. Minnie Mathis
Rev. Dillard Mathis
Ms. Hattie Parris
Mrs. Alyne Shuler

Calvary

Mr. Rush Sumners

Cashiers

Mr. Jerri Nowlin
Ms. Annie Early
Mr. Thomas Rogers, Jr.

Cullowhee

Mr. Russell Baxley
Mr. John H. Clayton
Mrs. Ethel Hooper
Mr. Gerald Robinson

Deitz Memorial

Mrs. Mary E. Buchanan
Mrs. Virginia Hawk

Dicks Creek

Geneva Pannell
Fred Williamson

East Sylva

Mrs. Leona Burchfield
Mrs. Bonnie Hefner
Mr. Jess Shelton
Mrs. Bonnie Shelton
Mr. Furman Shuler

Faith

Chiquita Palmer

Greens Creek

Mrs. Eva Allen
Mr. Silas Buchanan

Hyatts Chapel

Troy Gunter

Jarrett Memorial

Mr. Darrell Brown
Mrs. Betty Jean Keever Ludtke

Liberty

Mr. Robert Conley
Mrs. Mildred Conley
Mrs. Ellen Gibson
Mrs. Cathey Howard-Kalimah
Mr. Louis Howell

Little Savannah

Mrs. Myrtle Brown
Mrs. Tulin Middleton

Locust Field

Betty Burrell
Marshall Burrell
Edith Hensley

Long Branch

Mrs. Gladys Taylor

Lovedale

Mrs. Allie Haskett
Miss Hilda Hoyle
Mr. Marshall Mason
Mrs. Della Middleton

New Hope

Catherine Ashe
Margaret V. Dillard
James Donald
James H. Medford
Anna L. Nicholson
Lucille Shuler

Ochre Hill

Thomas G. Jones
Calvin Mills
T.H. Queen

Old Savannah

Claude Buchanan
Della Hall

Pine Creek

Randal Henderson, Deacon
Bob Norris
Cline Stewart

Rockdale

Mrs. Jannieve Bradley
Mr. Virgil Brooks, Deacon
Mrs. Naomi J. Brooks

Scotts Creek

Joe Denton
Harry Mason
Louise Monteith
Joe Moody
Buddy Stillwell
Bessie Wilson

Speedwell

Mr. Guy Robinson
Mrs. Blanche Taylor

Sylva First

Zola Dills
Coral L. Jones
Donald Pecht
Dot Revis
Lillie Waldrop Pannell

Tuckasegee

Lane Brown

Webster

James Chastain
Ida Dietz
Frank Gregory
Georgetta Stiens
Patsy Sutton

Zion Hill

Ms. Judy Bird
Mr. Robert Franks
Mr. Walker Passmore
Mr. Dexter Pressley
Mr. Andrew Wilson, Deacon
Mrs. Bertie Woodard

HISTORICAL TABLE

YEAR	SESSION	PLACE	DATE	MODERATOR	CLERK	DIR OF MISS	PREACHER
1851	22	Jonathan Ck	Oct 10	Joshua Ammons	Z B Allen		Joshua Ammons
1852	23	Scotts Ck	Aug				William Haynes
1894	65	Franklin	Aug 16-19	A H Sims	T C Bryson		G A Bartlett
1895	66	Mt Pleasant	Aug	A H Sims	T C Bryson		
1911	82	Cullowhee	Aug 17-20	Thad Bryson	W L Henson		R L Cook
1912	83	Savannah	Aug				J M Bennett
1916	87	Scotts Ck	Aug 17-19	C C Cowan	H B Jones		J B Smiley
1917	88	Shoal Creek	Aug				R L Cook
1923	94	Lovedale	Aug 16-20	T F Deitz	Hugh Monteith	T F West	W Ross Yokley
1924	95	Qualla	Aug 14-16	T F Deitz	Hugh Monteith	T F West	R L Cook
1925	96	Hamburg	Aug				
1927	98	Tuckasegee	Aug 18-20	T F Deitz	A J Dills		J G Murray
1928	99	Sylva First	Aug				L K Stafford
1929	100	Cullowhee	Aug 15	T F Deitz	W C Reid		T F Deitz
1930	101	Webster	Aug 14	T F Deitz	W C Reid		J G Murray
1931	102	Hamburg	Aug	T F Deitz			W N Cook
1932	103	Shoal Creek	Aug 18	T F Deitz			
1933	104	Scotts Creek	Aug 17-20	T F Deitz	W N Cook		L K Stafford
1934	105	Johns Creek	Aug 16-19	T F Deitz	W N Cook		W C Reed
1935	106	Old Savannah	Aug 15-18	T F Deitz	W N Cook		L K Stafford
1936	107	Lovedale	Aug 13-16	T F Deitz	W N Cook		L H Crawford
1937	108	Sols Creek	Aug 12-15	T F Deitz	W N Cook		Ben Cook
1938	109	Sylva	Aug 18-19	T F Deitz	W N Cook		G N Cowan
1939	110	Zion Hill	Aug 19-20	T F Deitz	W N Cook		W N Cook
1940	111	Moses Creek	Aug 15-16				L H Crawford
1941	112	Ochre Hill	Aug 14-15	T F Deitz			W N Cook
1942	113	Balsam Grove	Aug 13-14	T F Deitz	W N Cook		G C Teague
1943	114	Hamburg	Aug 12-13	T F Deitz	W N Cook		F F Brown
1944	115	Barkers Creek	Aug 17-18	T F Deitz	W N Cook	Gretchen Johnson	W E Pettit
1945	116	Lovedale	Aug 16-17	T F Deitz	W N Cook	Gretchen Johnson	Mark Osborne
1946	117	Cashiers	Aug 15-16	T F Deitz	W N Cook	Clarence Vance	F P Blankenship
1947	118	Wilkesdale East Sylva	Aug 14 Aug 15	T F Deitz	J Bryson	Clarence Vance	Dillard Wood
1948	119	Hyatts Chapel Shoal Creek	Aug 14 Aug 15	C M Warren	J Bryson	Euva Sentelle	Joe Bishop Melvin Snyder

HISTORICAL TABLE

YEAR	SESSION	PLACE	DATE	MODERATOR	CLERK	DIR OF MISS	PREACHER
1950	121	Pine Creek Yellow Mountain	Aug 17 Aug 18	J E Brown	P Snelson	Pauline Snelson	H E Marshbanks
1951	122	Sylva First Scotts Creek	Aug 16 Aug 17	J E Brown	E Sentelle	Pauline Snelson	Dr McGee W C Reed
1952	123	Buff Creek Ochre Hill	Aug 14 Aug 15	J E Brown		Pauline Snelson	Ralph Nix
1953	124	Old Savannah East Fork	Aug 13 Aug 14	J E Brown	C Corbin	Dorothy Edwards	L H Crawford J C Pipes
1954	125	Cullowhee Lovedale	Aug 12 Aug 13	J E Brown	C Corbin	Dorothy Edwards	Clyde Collins R W Abrams
1955	126	Lumberton Balsam Grove	Aug 18 Aug 19	J E Brown	C Corbin	Dorothy Edwards	Roland Pruette James Vanderford
1956	127	Hamburg Tuckasegee	Aug 16 Aug 17	J E Brown		Dorothy Edwards	Frank Reed
1957	128	New Hope Black Mountain	Aug 15 Aug 16	Edwin Allison	C Corbin	Dorothy Edwards	Zeb Barker
1958	129	Deitz Memorial Sylva	Aug 14 Aug 15	W Middleton	J Lambert	Alton Hooper	W L Sorrells M A Huggins
1959	130	Scotts Creek Balsam	Aug 13 Aug 14	W Middleton	J Lambert	Alton Hooper	Clarence Vance Doug Branch
1960	131	Rockdale New Savannah	Aug 18 Aug 19	R W Abrams	J Lambert	Alton Hooper	Quentin Perreault Nane Starnes
1961	132	Shoal Creek Hyatts Chapel	Aug 17 Aug 18	R W Abrams	J Lambert	Alton Hooper	J W Costner Ernest Upchurch
1962	133	Buff Creek Hamburg	Aug 16 Aug 17	Ray McCall	J Lambert	Alton Hooper	Alfred Sellers R W Abrams
1963	134	East Sylva Tuckasegee	Aug 15 Aug 16	Ray McCall	J Lambert	Alton Hooper	James Lambert Harry Vance
1964	135	Mt Pleasant Balsam	Aug 13 Aug 14	Ray McCall	J Lambert	Alton Hooper	Clyde Collins Joseph Reece
1965	136	Yellow Mountain Scotts Creek	Aug 12 Aug 13	Alfred Sellers	J Lambert	Alton Hooper	Roy Smith J E Brown
1966	137	Sylva First Calvary	Aug 18 Aug 19	Joseph Reece	Lloyd Fish	Alton Hooper	Lloyd Fish A B Lovell
1967	138	Ochre Hill Rockdale	Aug 17 Aug 18	Joseph Reece	A Hooper	Alton Hooper	Lloyd Fish George Langley
1968	139	No Minutes					
1969	140	Old Savannah Jarrett Memorial	Aug 14 Aug 15	Judson Rotan	C Dean	Walter Middleton	Burrell Lucas Charles Dean
1970	141	Tuckasegee Buff Creek	Aug 13 Aug 14	Judson Rotan	C Dean	Walter Middleton	Charles Bullock Judson Rotan
1971	142	Zion Hill Cullowhee	Aug 12 Aug 13	Robert Blanton	C Dean	Walter Middleton	M Clayton Frank Reed

HISTORICAL TABLE

YEAR	SESSION	PLACE	DATE	MODERATOR	CLERK	DIR OF MISS	PREACHER
1972	143	Balsam Webster	Aug 17 Aug 18	Robert Blanton	A Hoyle	Walter Middleton	H Anderson Charles Dean
1973	144	Cashiers Lovedale	Aug 16 Aug 17	John Hyatt	A Hoyle	Walter Middleton	Jack Holcombe Ray McCall
1974	145	Locust Field Greens Creek	Aug 14 Aug 15	John Hyatt	A Hoyle	Walter Middleton	L Jackson Harold Anderson
1975	146	Liberty New Hope	Aug 14 Aug 15	Robert Blanton	A Hoyle	Walter Middleton	C H Greene H Nicholson
1976	147	Hamburg Long Branch	Aug 12 Aug 13	Robert Blanton	A Hoyle		Luther Osment J D Wyatt
1977	148	Shoal Creek Black Mountain	Aug 18 Aug 19	Wesley Hooper	A Hoyle	C O Vance Alvin Loiry, Jr	Douglas McFadin Alvin Loiry, Jr
1978	149	Buff Creek Yellow Mountain	Aug 17 Aug 18	J C Robinson	A Hoyle	Alvin Loiry, Jr	Harry Vance Cecil Saunders
1979	150	Balsam Grove Pine Creek	Aug 16 Aug 17	J C Robinson	A Hoyle	Alvin Loiry, Jr	Bill Rogers Robert Blanton
1980	151	East Sylva Sylva First	Aug 14 Aug 15	Ray McCall	A Hoyle	Alvin Loiry, Jr	Jerry Laughter John Bunn
1981	152	Ochre Hill Hyatts Chapel	Aug 13 Aug 14	Ray McCall	A Hoyle	Alvin Loiry, Jr	Pat Correll David Blackney
1982	153	East Fork Jarrett Memorial	Aug 12 Aug 13	Ray McCall	A Hoyle	John Reid	T Connelly George Tuthill
1983	154	Cashiers Cullowhee	Aug 18 Aug 19	Johnny Enloe	A Hoyle	John Reid	Ben Cabe Jack Hinson
1984	155	Tuckasegee Moses Creek	Aug 16 Aug 17	Ed Stillwell	A Hoyle	John Reid	Carl Smith S J Waters
1985	156	Scotts Creek Old Savannah	Aug 15 Aug 16	Ed Stillwell	A Hoyle	John Reid	J D Griffin Virgil Cook
1986	157	Balsam Rockdale	Aug 21 Aug 22	Mike Moore	A Hoyle	John Reid	Abe Brooks Dennis Burrell
1987	158	Zion Hill Lovedale	Oct 15 Oct 16	Mike Moore	A Hoyle	John Reid	Joe Smith Lewis Smith
1988	159	Jarrett Memorial Sylva First	Oct 13 Oct 14	Roy Burnette	A Hoyle	John Reid	Glenn Blanton Ray McCall
1989	160	Cashiers Scotts Creek	Oct 12 Oct 13	Roy Burnette	A Hoyle	John Reid	Charles Sisti Charles Brown
1990	161	Ochre Hill Webster	Oct 18 Oct 29	Clyde Vance	A Hoyle	John Reid	Tommy Lamb Joe Yelton
1991	162	Buff Creek New Hope	Oct 17 Oct 18	Clyde Vance	R Houston	John Reid	Ed Beddingfield Earl Holden
1992	163	Greens Creek Yellow Mountain	Oct 15 Oct 16	James Pressley	R Houston	John Reid	Wayne Sorrells Larry Nations

HISTORICAL TABLE

YEAR	SESSION	PLACE	DATE	MODERATOR	CLERK	DIR OF MISS	PREACHER
1993	164	Lovedale East Sylva	Oct 14 Oct 15	James Pressley	R Houston	John Reid	Scott Courtney Barry Almand
1994	165	Cullowhee Hamburg	Oct 13 Oct 14	Wayne Sorrells	R Houston	John Reid	Mike Moore Eddie Stillwell
1995	166	Mt Pleasant Black Mountain	Oct 12 Oct 13	Wayne Sorrells	R Houston	John Reid	Roy Burnette Mike Farmer
1996	167	Cullowhee Zion Hill	Oct 17 Oct 18	Dennis Ensley	R Houston	John Reid	Harold Anderson Robert Blanton
1997	168	Locust Field Cashiers	Oct 16 Oct 17	E Beddingfield	W Caldwell	John Reid	Charles Carnes David Boroughs
1998	169	Scotts Creek New Hope	Oct 15 Oct 16	E Beddingfield	W Caldwell		Roger Stewman Keith Ashe
1999	170	Shoal Creek Webster	Oct 14 Oct 15	Tom McClure	W Caldwell		Robert Driggers Tommy Holden
2000	171	Sylva First Ochre Hill	Oct 12 Oct 13	Tom McClure	B Greene	Claude Conard	Rich Peoples Avery Brown
2001	172	Buff Creek East Fork	Oct 18 Oct 19	Mike Dellinger	A Bialy	Claude Conard	Steve Jamison Charles Dean

DIGEST OF CHURCH LETTERS 2001

At the time the 2001 report was completed, 40 of 43 Association member churches (93%) had reported. The 2000 report reflects 38 out of 43 (88%) reporting.

	2000	2001
Total Baptisms	147	118
Other Additions	180	125
Total Membership	8737	8477
Sunday School Enrollment	3173	3044
VBS Enrollment	1826	1652
Discipleship Training Enrollment	418	438
Music Enrollment	1110	1093
WMU Enrollment	526	502
Brotherhood Enrollment	167	126
Total Receipts	\$2,659,623	\$2,561,047
Cooperative Program	\$94,450	\$95,480
Associational Missions	\$37,440	\$39,933
North Carolina State Missions	\$16,708	\$18,642
Annie Armstrong Offering	\$35,146	\$30,012
Lottie Moon Offering	\$62,554	\$57,286
Other Southern Baptist Convention Missions	\$51,258	\$22,828
Non-Southern Baptist Convention Missions	\$107,333	\$73,560
Total Missions	\$404,884	\$337,741

Congregation Summary

Tuckaseegee Association

*Legend: 3 -- Total Baptisms 4 -- Other Additions 1 -- Total Membership 15 -- Total SS Enrollment 16 -- SS Avg. Weekly Attendance 18 -- Vacation Bible School
DTEN (19+20) -- Total DT Enrollment/Participation 21 -- Total Music Ministry Enrollment 23 -- Total WMU Enrollment 24 -- Total Brotherhood Enrollment
TRE -- Total Receipts (26+27+28) 29 -- Total Cooperative Program 30 -- Total Assn. Missions TME -- Total Mission Expenditures (29-35)*

CONGREGATION	C/M	3	4	1	15	16	18	DTEN	21	23	24	TRE	29	30	TME
Balsam Bapt	C	0	0	0	0	0	0	0	0	0	0	\$0	\$0	\$0	\$0
Big Ridge	C	0	0	0	0	0	0	0	0	0	0	\$0	\$0	\$0	\$0
Black Mountain	C	2	1	181	101	56	54	0	71	0	0	\$30,487	\$0	\$400	\$3,841
Buff Creek Bapt Ch	C	5	5	255	81	50	41	0	40	33	10	\$60,350	\$2,810	\$1,200	\$6,011
Calvary	C	0	1	117	38	29	15	10	31	0	0	\$19,690	\$373	\$100	\$873
Cashiers Bapt Ch	C	2	6	390	140	70	100	0	60	25	15	\$181,268	\$3,000	\$1,800	\$34,697
Culowhee Bapt Ch	C	0	2	375	96	50	101	0	16	25	0	\$9,386	\$0	\$900	\$1,308
Culowhee Valley Bapt	C	0	0	28	11	12	0	0	12	0	0	\$18,305	\$127	\$120	\$6,148
Deitz Memorial	C	4	0	63	26	23	0	0	0	0	0	\$16,584	\$750	\$600	\$2,110
Dicks Creek Bapt Ch	C	1	0	96	40	20	0	0	12	0	0	\$9,072	\$0	\$132	\$3,852
East Fork Bapt	C	3	0	103	53	34	0	0	22	0	0	\$30,976	\$550	\$600	\$8,925
East Sylva	C	8	12	709	312	118	132	28	104	63	0	\$202,560	\$0	\$1,000	\$19,695
Faith Baptist Church	C	0	0	77	40	30	0	14	18	12	15	\$74,844	\$6,363	\$1,909	\$20,667
Greens Creek Bapt Ch	C	0	4	163	68	28	30	15	17	12	0	\$55,769	\$5,400	\$2,520	\$13,283
Hamburg	C	5	7	196	89	49	60	40	14	24	15	\$129,027	\$6,430	\$2,400	\$28,236
Hyatts Chapel	C	0	0	202	48	30	0	0	35	0	0	\$42,053	\$600	\$0	\$5,000
Jarrett Memorial Bapt	C	3	2	184	53	25	0	28	20	11	0	\$46,523	\$900	\$900	\$5,439
Liberty Bapt Ch	C	0	0	50	26	28	0	9	27	13	0	\$50	\$0	\$0	\$600
Little Savannah	C	15	1	190	56	44	68	41	33	0	0	\$27,445	\$400	\$590	\$4,093
Locust Field Bapt	C	0	2	169	62	36	48	0	43	26	0	\$31,593	\$225	\$200	\$3,109
Long Branch Missionary	C	2	2	95	66	29	58	39	0	0	0	\$29,606	\$0	\$120	\$1,256
Lovedale Bapt Ch	C	1	1	206	70	33	0	0	28	15	0	\$75,851	\$6,110	\$1,948	\$18,083
Lumberton	C	0	4	18	12	0	0	0	0	0	0	\$6,444	\$0	\$400	\$850
Moses Creek Bapt Ch	C	1	1	79	48	46	0	0	20	0	0	\$47,673	\$0	\$0	\$9,187
Mount Pleasant	C	0	0	0	38	0	0	0	0	0	0	\$0	\$0	\$0	\$0
New Hope Bapt Ch	C	11	8	504	250	92	154	130	95	39	0	\$107,184	\$538	\$300	\$8,119
New Savannah	C	0	0	26	16	12	0	10	0	0	0	\$11,396	\$200	\$100	\$1,700
Ochre Hill Bapt Ch	C	2	4	397	122	70	87	0	40	15	0	\$89,300	\$0	\$2,400	\$9,457
Old Savannah	C	21	13	559	95	74	119	0	48	14	0	\$101,419	\$0	\$0	\$1,461

Congregation Summary

Tuckasegee Association

*Legend: 3 --- Total Baptisms 4 -- Other Additions 1 -- Total Membership 15 -- Total SS Enrollment 16 -- SS Avg. Weekly Attendance 18 -- Vacation Bible School
 DTEN (19+20) -- Total DT Enrollment/Participation 21 -- Total Music Ministry Enrollment 23 -- Total WMU Enrollment 24 -- Total Brotherhood Enrollment
 TRE -- Total Receipts (26+27+28) 29 -- Total Cooperative Program 30 -- Total Assn. Missions TME -- Total Mission Expenditures (29-35)*

CONGREGATION	C/M	3	4	1	15	16	18	DTEN	21	23	24	TRE	29	30	TME
Pine Creek	C	1	0	127	35	30	15	0	0	0	0	\$30,000	\$0	\$0	\$0
Promise Land	C	4	7	68	30	25	45	0	17	0	0	\$27,110	\$0	\$55	\$55
Rockdale Bapt Ch	C	3	1	152	75	42	55	0	28	0	0	\$35,700	\$0	\$360	\$3,140
Scotts Creek Bapt Ch	C	4	14	570	182	106	95	20	42	45	0	\$237,515	\$20,492	\$6,721	\$37,462
Shoal Creek	C	1	0	81	52	32	25	0	12	4	0	\$56,892	\$5,809	\$1,800	\$9,460
Sols Creek	C	0	0	0	0	0	0	0	0	0	0	\$0	\$0	\$0	\$0
Speedwell Bapt Ch	C	1	7	220	46	22	33	0	21	0	0	\$17,914	\$86	\$360	\$2,234
Sylva First Bapt	C	4	10	818	246	95	60	0	79	103	71	\$458,434	\$27,300	\$8,400	\$47,825
Tilley Creek	C	2	3	63	38	25	0	0	13	0	0	\$0	\$0	\$0	\$0
Tuckasegee Bapt Ch	C	0	0	184	40	24	0	0	20	0	0	\$1,852	\$950	\$638	\$6,775
Unity	C	1	2	187	0	0	45	0	0	0	0	\$0	\$0	\$0	\$0
Webster	C	10	0	254	137	89	111	39	25	0	0	\$171,541	\$5,767	\$960	\$10,853
Wilkesdale	C	0	4	50	24	20	31	15	10	8	0	\$0	\$0	\$0	\$420
Zion Hill	C	1	1	271	82	53	70	0	20	15	0	\$69,235	\$300	\$0	\$1,516
Total:		118	125	8,477	3,044	1,651	1,652	438	1,093	502	126	\$2,561,047	\$95,480	\$39,933	\$337,740

Congregation and Member Info

Tuckaseegee Association

*Legend: 1 -- Total Membership 2 -- Resident Membership 4 -- Other Additions 5 - New Member Training 6 -- Year Organized 7 -- Year Pastor Came 8-- Location (A-J)
9 -- AM Worship Att. 10 -- Church-Type Misions Started 11 -- Church-Type Missions Operating 12 -- Lost/Unchurched 13 -- Assoc. Mis on % Basis
14 -- Intercessory Prayer Race -- Racial Ethnic Group*

CONGREGATION	C/M	1	2	4	5	6	7	8	9	10	11	12	13	14	15
Balsam Bapt	C	0	0	0	0	0	0		0	0	0				1
Big Ridge	C	0	0	0	0	0	0		0	0	0				1
Black Mountain	C	181	133	1	0	1919	1991	A	56	0	0	Y	Y	Y	1
Buff Creek Bapt Ch	C	255	222	5	0	1905	1999	A	65	0	0	Y	Y	Y	1
Calvary	C	117	75	1	0	1949	1994	A	30	0	0	Y	Y	Y	1
Cashiers Bapt Ch	C	390	278	6	0	1929	2000	C	125	0	0	N	N	Y	1
Cullowhee Bapt Ch	C	375	216	2	0	1821	2001	B	0	0	0	Y	Y	Y	1
Cullowhee Valley Bapt	C	28	25	0	0	1986	2000	A	12	0	0	N	N	N	1
Deltz Memorial	C	63	63	0	0	1956	1980	A	24	0	0	N	N	N	1
Dicks Creek Bapt Ch	C	96	72	0	0	1903	2001	A	25	0	0	N	N	Y	1
East Fork Bapt	C	103	56	0	0	1882	1989	A	40	0	0	N	Y	Y	1
East Sylva	C	709	537	12	0	1921	1966	C	375	0	0	Y	Y	Y	1
Faith Baptist Church	C	77	77	0	0	1995	1998	C	50	0	0	Y	Y	Y	1
Greens Creek Bapt Ch	C	163	117	4	0	1921	1999	A	55	0	0	Y	N	Y	1
Hamburg	C	196	196	7	0	1849	2001	B	110	0	0	Y	N	Y	1
Hyatts Chapel	C	202	162	0	0	1916	1992	A	30	0	0	N	N	N	1
Jarrett Memorial Bapt	C	184	117	2	0	1888	1991	B	40	0	0	Y	N	Y	1
Liberty Bapt Ch	C	50	0	0	0	1876	1988	D	40	1	2	N	Y	N	2
Little Savannah	C	190	128	1	0	1914	1998	A	59	0	0	N	Y	N	1
Locust Field Bapt	C	169	113	2	0	1895	1971	A	50	0	0	Y	N	Y	3
Long Branch Missionary	C	95	95	2	0	1934	2001	A	43	0	0	Y	N	Y	1
Lovedale Bapt Ch	C	206	165	1	0	1919	1998	C	80	0	0	N	Y	Y	1
Lumberton	C	18	0	4	0	0	2000	A	0	0	0	Y	N	Y	1
Moses Creek Bapt Ch	C	79	76	1	0	1919	1981	A	52	0	0	Y	N	Y	1
Mount Pleasant	C	0	0	0	0	1905	2001	A	40	0	0	Y	N	Y	1
New Hope Bapt Ch	C	504	465	8	0	1955	1988	A	150	0	0	N	N	Y	1
New Savannah	C	26	20	0	0	1905	1998	A	15	0	0	Y	Y	Y	1
Ochre Hill Bapt Ch	C	397	252	4	0	1890	2001	A	150	0	0	Y	Y	Y	1
Old Savannah	C	559	470	13	0	1835	1991	A	0	0	0	Y	N	N	1
Pine Creek	C	127	87	0	0	1945	1998	A	50	0	0	N	N	N	1
Promise Land	C	68	0	7	0	1984	1994	A	31	0	0	Y	N	Y	1
Rockdale Bapt Ch	C	152	81	1	0	1947	2001	A	66	0	0	N	N	N	1
Scotts Creek Bapt Ch	C	570	450	14	0	1830	1999	D	179	0	0	Y	Y	Y	1
Shoal Creek	C	81	74	0	0	1828	1996	C	50	0	0	Y	Y	Y	1
Sols Creek	C	0	0	0	0	0	0		0	0	0				1
Speedwell Bapt Ch	C	220	96	7	0	1902	1997	A	31	0	0	N	N	N	1
Sylva First Bapt	C	818	449	10	0	1887	1989	C	200	0	0	Y	Y	Y	1
Tilley Creek	C	63	45	3	0	1951	2001	A	30	0	0	Y	N	N	1

Congregation and Member Info

Tuckaseegee Association

*Legend: 1 -- Total Membership 2 -- Resident Membership 4 -- Other Additions 5 - New Member Training 6 -- Year Organized 7 -- Year Pastor Came 8-- Location (A-J)
9 -- AM Worship Att. 10 -- Church-Type Misions Started 11 -- Church-Type Missions Operating 12 -- Lost/Unchurched 13 -- Assoc. Mis on % Basis
14 -- Intercessory Prayer Race -- Racial Ethnic Group*

CONGREGATION	C/M	1	2	4	5	6	7	8	9	10	11	12	13	14	15
Tuckasegee Bapt Ch	C	184	74	0	0	1836	0	A	24	0	0	Y	Y	Y	1
Unlty	C	187	0	2	0	1956	1994	A	32	0	0	Y	N	Y	1
Webster	C	254	240	0	0	1854	1997	A	175	0	0	Y	N	Y	1
Wilkesdale	C	50	40	4	0	1930	1997	C	25	0	0	Y	N	Y	1
Zion Hill	C	271	173	1	0	1900	1997	A	80	0	0	Y	N	N	1
Total:		8,477	5,939	125	0				2,689	1	2				

Baptism Info
Tuckaseigee Association

Legend: 3 -- Baptisms Total 3a -- Baptisms 0-5 3b -- Baptisms 6-8 3c -- Baptisms 9-11 3d -- Baptisms 12-17 3e -- Baptisms 18-29 3f -- Baptisms 30-59 3g -- Baptisms 60-

CONGREGATION	C/M	3	3a	3b	3c	3d	3e	3f	3g
Balsam Bapt	C	0	0	0	0	0	0	0	0
Big Ridge	C	0	0	0	0	0	0	0	0
Black Mountain	C	2	0	0	1	1	0	0	0
Buff Creek Bapt Ch	C	5	0	1	2	0	0	2	0
Calvary	C	0	0	0	0	0	0	0	0
Cashiers Bapt Ch	C	2	0	0	0	2	0	0	0
Cullowhee Bapt Ch	C	0	0	0	0	0	0	0	0
Cullowhee Valley Bapt	C	0	0	0	0	0	0	0	0
Deltz Memorial	C	4	0	2	1	0	1	0	0
Dicks Creek Bapt Ch	C	1	0	0	1	0	0	0	0
East Fork Bapt	C	3	0	2	1	0	0	0	0
East Sylva	C	8	0	0	4	3	0	1	0
Faith Baptist Church	C	0	0	0	0	0	0	0	0
Greens Creek Bapt Ch	C	0	0	0	0	0	0	0	0
Hamburg	C	5	0	0	2	1	0	2	0
Hyatts Chapel	C	0	0	0	0	0	0	0	0
Jarrett Memorial Bapt	C	3	0	0	2	1	0	0	0
Liberty Bapt Ch	C	0	0	0	0	0	0	0	0
Little Savannah	C	15	0	6	4	1	2	2	0
Locust Field Bapt	C	0	0	0	0	0	0	0	0
Long Branch Missionary	C	2	0	0	1	0	0	1	0
Lovedale Bapt Ch	C	1	0	0	0	0	1	0	0
Lumberton	C	0	0	0	0	0	0	0	0
Moses Creek Bapt Ch	C	1	0	0	0	1	0	0	0
Mount Pleasant	C	0	0	0	0	0	0	0	0
New Hope Bapt Ch	C	11	1	4	2	0	3	1	0
New Savannah	C	0	0	0	0	0	0	0	0
Ochre Hill Bapt Ch	C	2	0	0	1	1	0	0	0
Old Savannah	C	21	0	2	4	1	8	5	1
Pine Creek	C	1	0	0	0	1	0	0	0
Promise Land	C	4	0	1	1	1	0	0	1
Rockdale Bapt Ch	C	3	0	1	1	1	0	0	0

Baptism Info

Tuckasegee Association

Legend: 3 -- Baptisms Total 3a -- Baptisms 0-5 3b -- Baptisms 6-8 3c -- Baptisms 9-11 3d -- Baptisms 12-17 3e -- Baptisms 18-29 3f -- Baptisms 30-59 3g -- Baptisms 60-

CONGREGATION	C/M	3	3a	3b	3c	3d	3e	3f	3g
Scotts Creek Bapt Ch	C	4	0	0	0	0	2	2	0
Shoal Creek	C	1	0	0	0	1	0	0	0
Sols Creek	C	0	0	0	0	0	0	0	0
Speedwell Bapt Ch	C	1	0	0	0	1	0	0	0
Sylva First Bapt	C	4	0	0	1	0	1	1	1
Tilley Creek	C	2	0	0	0	0	2	0	0
Tuckasegee Bapt Ch	C	0	0	0	0	0	0	0	0
Unity	C	1	0	0	1	0	0	0	0
Webster	C	10	0	1	6	1	0	2	0
Wilkesdale	C	0	0	0	0	0	0	0	0
Zion Hill	C	1	0	0	0	0	1	0	0
Total:		118	1	20	36	18	21	19	3

Sunday School Info - Enrollment

Tuckaseegee Association

*Legend: 15 -- Total SS Enrollment 15a -- SS 0-5 15b -- SS 6-11 15c -- SS 12-17 15d -- SS 18-24 15e -- SS 25-34 15f -- SS 35-54 15g -- SS 55 up
15h -- SS General Officers 15i -- Other Bible Study 16 -- SS Avg Weekly Attendance 17 -- Non-Cong Members 18 -- Vacation Bible School*

CONGREGATION	C/M	15	15a	15b	15c	15d	15e	15f	15g	15h	15i	16	17	18
Balsam Bapt	C	0	0	0	0	0	0	0	0	0	0	0	0	0
Big Ridge	C	0	0	0	0	0	0	0	0	0	0	0	0	0
Black Mountain	C	101	14	5	8	6	21	18	20	5	0	56	9	54
Buff Creek Bapt Ch	C	81	12	10	13	8	3	3	12	2	0	50	5	41
Calvary	C	38	4	2	2	4	2	6	6	12	0	29	5	15
Cashiers Bapt Ch	C	140	9	12	8	4	21	14	31	2	24	70	12	100
Cullowhee Bapt Ch	C	96	8	3	3	6	12	4	18	1	15	50	0	101
Cullowhee Valley Bapt	C	11	0	0	1	0	0	1	4	1	0	12	0	0
Deitz Memorial	C	26	2	2	4	1	0	5	0	2	0	23	0	0
Dicks Creek Bapt Ch	C	40	5	4	2	7	1	7	4	0	0	20	10	0
East Fork Bapt	C	53	8	6	5	0	12	3	11	1	0	34	0	0
East Sylva	C	312	21	27	38	18	34	22	51	10	50	118	0	132
Faith Baptist Church	C	40	1	3	3	2	3	5	13	6	0	30	0	0
Greens Creek Bapt Ch	C	68	1	8	2	10	5	3	13	3	0	28	0	30
Hamburg	C	89	3	12	8	6	13	12	12	3	0	49	5	60
Hyatts Chapel	C	48	5	3	4	4	5	12	9	1	0	30	0	0
Jarrett Memorial Bapt	C	53	0	2	5	6	8	11	15	3	0	25	0	0
Liberty Bapt Ch	C	26	0	2	7	3	0	4	3	0	0	28	1	0
Little Savannah	C	56	11	18	7	2	3	6	5	4	0	44	0	68
Locust Field Bapt	C	62	5	10	0	2	6	15	8	4	0	36	0	48
Long Branch Missionary	C	66	4	7	3	4	7	15	8	6	0	29	4	58
Lovedale Bapt Ch	C	70	2	7	0	1	0	17	36	7	0	33	0	0
Lumberton	C	12	0	0	0	0	0	6	6	0	0	0	0	0
Moses Creek Bapt Ch	C	48	2	4	9	0	2	6	18	0	0	46	5	0
Mount Pleasant	C	38	3	7	7	0	2	10	0	0	0	0	0	0
New Hope Bapt Ch	C	250	23	17	40	27	34	24	35	5	25	92	0	154
New Savannah	C	16	0	2	1	0	1	2	2	1	0	12	3	0
Ochre Hill Bapt Ch	C	122	9	5	6	8	20	20	12	6	0	70	0	87
Old Savannah	C	95	10	11	9	4	14	19	6	4	0	74	4	119
Pine Creek	C	35	4	1	0	4	4	5	7	4	0	30	0	15
Promise Land	C	30	0	3	3	2	3	13	3	0	0	25	0	45

Sunday School Info - Enrollment

Tuckaseegee Association

*Legend: 15 -- Total SS Enrollment 15a -- SS 0-5 15b -- SS 6-11 15c -- SS 12-17 15d -- SS 18-24 15e -- SS 25-34 15f -- SS 35-54 15g -- SS 55 up
15h -- SS General Officers 15i -- Other Bible Study 16 -- SS Avg Weekly Attendance 17 -- Non-Cong Members 18 -- Vacation Bible School*

CONGREGATION	C/M	15	15a	15b	15c	15d	15e	15f	15g	15h	15i	16	17	18
Rockdale Bapt Ch	C	75	13	12	8	7	0	10	10	0	0	42	5	55
Scotts Creek Bapt Ch	C	182	15	20	12	12	19	25	20	5	0	106	0	95
Shoal Creek	C	52	0	7	4	0	2	0	20	0	0	32	7	25
Sols Creek	C	0	0	0	0	0	0	0	0	0	0	0	0	0
Speedwell Bapt Ch	C	46	0	4	2	2	0	13	1	5	12	22	0	33
Sylva First Bapt	C	246	20	27	14	10	10	24	49	3	0	95	0	60
Tilley Creek	C	38	3	3	3	4	6	6	6	4	0	25	0	0
Tuckaseegee Bapt Ch	C	40	0	6	5	4	4	6	5	1	0	24	4	0
Unity	C	0	0	0	0	0	0	0	0	0	0	0	0	45
Webster	C	137	19	26	20	6	33	11	11	3	0	89	0	111
Wilkesdale	C	24	3	2	0	0	3	5	3	0	0	20	0	31
Zion Hill	C	82	5	14	5	12	7	18	18	3	0	53	0	70
Total:		3,044	244	314	271	196	320	406	511	117	126	1,651	79	1,652

Discipleship Training Info

Tuckaseegee Association

*Legend: 19 -- Total Ongoing Discipleship Training 19a -- Ongoing Preschool B-5 19b -- Ongoing Child 6-11 19c -- Ongoing Youth 12-17 19d -- Ongoing Adult 18-up
19e -- DT Gen. Officers 20 -- Total Short-Term DT 20a -- Short-Term Preschool 20b -- Short-Term Children 20c -- Short-Term Youth
20d -- Short-Term Adults - Gen. Officers DTEN (19+20) -- Total DT Enrollment/Participation*

CONGREGATION	C/M	19	19a	19b	19c	19d	19e	20	20a	20b	20c	20d	DTEN
Balsam Bapt	C	0	0	0	0	0	0	0	0	0	0	0	0
Big Ridge	C	0	0	0	0	0	0	0	0	0	0	0	0
Black Mountain	C	0	0	0	0	0	0	0	0	0	0	0	0
Buff Creek Bapt Ch	C	0	0	0	0	0	0	0	0	0	0	0	0
Calvary	C	0	0	0	0	0	0	10	0	3	3	4	10
Cashiers Bapt Ch	C	0	0	0	0	0	0	0	0	0	0	0	0
Cullowhee Bapt Ch	C	0	0	0	0	0	0	0	0	0	0	0	0
Cullowhee Valley Bapt	C	0	0	0	0	0	0	0	0	0	0	0	0
Deltz Memorial	C	0	0	0	0	0	0	0	0	0	0	0	0
Dicks Creek Bapt Ch	C	0	0	0	0	0	0	0	0	0	0	0	0
East Fork Bapt	C	0	0	0	0	0	0	0	0	0	0	0	0
East Sylva	C	28	3	12	13	0	0	0	0	0	0	0	28
Faith Baptist Church	C	14	0	3	8	0	3	0	0	0	0	0	14
Greens Creek Bapt Ch	C	15	0	0	0	14	1	0	0	0	0	0	15
Hamburg	C	40	3	3	4	28	2	0	0	0	0	0	40
Hyatts Chapel	C	0	0	0	0	0	0	0	0	0	0	0	0
Jarrett Memorial Bapt	C	28	0	3	3	19	3	0	0	0	0	0	28
Liberty Bapt Ch	C	9	0	0	5	3	1	0	0	0	0	0	9
Little Savannah	C	41	5	10	5	19	2	0	0	0	0	0	41
Locust Field Bapt	C	0	0	0	0	0	0	0	0	0	0	0	0
Long Branch Missionary	C	39	2	5	3	26	3	0	0	0	0	0	39
Lovedale Bapt Ch	C	0	0	0	0	0	0	0	0	0	0	0	0
Lumberton	C	0	0	0	0	0	0	0	0	0	0	0	0
Moses Creek Bapt Ch	C	0	0	0	0	0	0	0	0	0	0	0	0
Mount Pleasant	C	0	0	0	0	0	0	0	0	0	0	0	0
New Hope Bapt Ch	C	110	10	10	15	75	0	20	0	0	0	20	130
New Savannah	C	10	0	2	1	7	0	0	0	0	0	0	10
Ochre Hill Bapt Ch	C	0	0	0	0	0	0	0	0	0	0	0	0
Old Savannah	C	0	0	0	0	0	0	0	0	0	0	0	0
Pine Creek	C	0	0	0	0	0	0	0	0	0	0	0	0
Promise Land	C	0	0	0	0	0	0	0	0	0	0	0	0
Rockdale Bapt Ch	C	0	0	0	0	0	0	0	0	0	0	0	0
Scotts Creek Bapt Ch	C	20	0	0	0	20	0	0	0	0	0	0	20

Discipleship Training Info

Tuckasegee Association

*Legend: 19 -- Total Ongoing Discipleship Training 19a -- Ongoing Preschool B-5 19b -- Ongoing Child 6-11 19c -- Ongoing Youth 12-17 19d -- Ongoing Adult 18-up
 19e -- DT Gen. Officers 20 -- Total Short-Term DT 20a -- Short-Term Preschool 20b -- Short-Term Children 20c -- Short-Term Youth
 20d -- Short-Term Adults - Gen. Officers DTEN (19+20) -- Total DT Enrollment/Participation*

CONGREGATION	C/M	19	19a	19b	19c	19d	19e	20	20a	20b	20c	20d	DTEN
Shoal Creek	C	0	0	0	0	0	0	0	0	0	0	0	0
Sols Creek	C	0	0	0	0	0	0	0	0	0	0	0	0
Speedwell Bapt Ch	C	0	0	0	0	0	0	0	0	0	0	0	0
Sylva First Bapt	C	0	0	0	0	0	0	0	0	0	0	0	0
Tilley Creek	C	0	0	0	0	0	0	0	0	0	0	0	0
Tuckasegee Bapt Ch	C	0	0	0	0	0	0	0	0	0	0	0	0
Unity	C	0	0	0	0	0	0	0	0	0	0	0	0
Webster	C	39	0	4	10	25	0	0	0	0	0	0	39
Wilkesdale	C	15	0	0	0	15	0	0	0	0	0	0	15
Zion Hill	C	0	0	0	0	0	0	0	0	0	0	0	0
Total:		408	23	52	67	251	15	30	0	3	3	24	438

Music Ministry Info

Tuckaseegee Association

Legend: 21 -- Total Music Ministry Enrollment 21a -- Preschool 3-5 21b -- Children 6-11 21c -- Youth 12-17 21d -- Adult Choir 18-up 21e -- Other Music Groups

CONGREGATION	C/M	21	21a	21b	21c	21d	21e
Balsam Bapt	C	0	0	0	0	0	0
Big Ridge	C	0	0	0	0	0	0
Black Mountain	C	71	7	6	9	40	9
Buff Creek Bapt Ch	C	40	4	2	14	20	0
Calvary	C	31	0	4	2	25	0
Cashiers Bapt Ch	C	60	0	0	15	25	20
Cullowhee Bapt Ch	C	16	0	0	0	16	0
Cullowhee Valley Bapt	C	12	0	0	1	11	0
Deitz Memorial	C	0	0	0	0	0	0
Dicks Creek Bapt Ch	C	12	1	1	1	7	2
East Fork Bapt	C	22	0	0	1	21	0
East Sylva	C	104	0	15	4	45	40
Faith Baptist Church	C	18	0	2	0	16	0
Greens Creek Bapt Ch	C	17	0	0	0	17	0
Hamburg	C	14	0	0	0	14	0
Hyatts Chapel	C	35	3	5	8	18	1
Jarrett Memorial Bapt	C	20	0	2	1	17	0
Liberty Bapt Ch	C	27	0	0	8	19	0
Little Savannah	C	33	4	13	4	12	0
Locust Field Bapt	C	43	2	6	2	22	11
Long Branch Missionary	C	0	0	0	0	0	0
Lovedale Bapt Ch	C	28	0	0	0	28	0
Lumberton	C	0	0	0	0	0	0
Moses Creek Bapt Ch	C	20	0	1	2	17	0
Mount Pleasant	C	0	0	0	0	0	0
New Hope Bapt Ch	C	95	15	15	5	45	15
New Savannah	C	0	0	0	0	0	0
Ochre Hill Bapt Ch	C	40	10	2	5	20	3
Old Savannah	C	48	5	8	6	29	0
Pine Creek	C	0	0	0	0	0	0
Promise Land	C	17	0	1	1	15	0
Rockdale Bapt Ch	C	28	0	3	5	20	0

Music Ministry Info

Tuckasegee Association

Legend: 21 -- Total Music Ministry Enrollment 21a -- Preschool 3-5 21b -- Children 6-11 21c -- Youth 12-17 21d -- Adult Choir 18-up 21e -- Other Music Groups

CONGREGATION	C/M	21	21a	21b	21c	21d	21e
Scotts Creek Bapt Ch	C	42	10	1	0	31	0
Shoal Creek	C	12	0	0	2	10	0
Sols Creek	C	0	0	0	0	0	0
Speedwell Bapt Ch	C	21	0	0	1	20	0
Sylva First Bapt	C	79	7	18	4	38	12
Tilley Creek	C	13	1	0	4	8	0
Tuckasegee Bapt Ch	C	20	0	0	2	18	0
Unity	C	0	0	0	0	0	0
Webster	C	25	0	10	5	0	10
Wilkesdale	C	10	0	0	0	10	0
Zion Hill	C	20	0	0	4	16	0
Total:		1,093	69	115	116	670	123

Missions Involvement

Tuckaseige Association

Legend: 22 -- Miss. Project Participation 22a -- Local Community 22b -- State/National 22c -- Canada 22d -- International

CONGREGATION	C/M	22	22a	22b	22c	22d
Balsam Bapt	C	0	0	0	0	0
Big Ridge	C	0	0	0	0	0
Black Mountain	C	140	140	0	0	0
Buff Creek Bapt Ch	C	62	50	12	0	0
Calvary	C	0	0	0	0	0
Cashiers Bapt Ch	C	140	40	30	70	0
Cullowhee Bapt Ch	C	300	170	50	40	40
Cullowhee Valley Bapt	C	0	0	0	0	0
Deitz Memorial	C	0	0	0	0	0
Dicks Creek Bapt Ch	C	0	0	0	0	0
East Fork Bapt	C	0	0	0	0	0
East Sylva	C	1,096	350	302	90	354
Faith Baptist Church	C	30	0	10	10	10
Greens Creek Bapt Ch	C	0	0	0	0	0
Hamburg	C	26	11	15	0	0
Hyatts Chapel	C	2	0	0	0	2
Jarrett Memorial Bapt	C	11	0	7	3	1
Liberty Bapt Ch	C	0	0	0	0	0
Little Savannah	C	0	0	0	0	0
Locust Field Bapt	C	6	0	0	0	6
Long Branch Missionary	C	0	0	0	0	0
Lovedale Bapt Ch	C	0	0	0	0	0
Lumberton	C	0	0	0	0	0
Moses Creek Bapt Ch	C	0	0	0	0	0
Mount Pleasant	C	0	0	0	0	0
New Hope Bapt Ch	C	160	40	60	20	40
New Savannah	C	3	0	1	0	2
Ochre Hill Bapt Ch	C	0	0	0	0	0
Old Savannah	C	1	1	0	0	0
Pine Creek	C	3	0	0	0	3
Promise Land	C	0	0	0	0	0
Rockdale Bapt Ch	C	0	0	0	0	0

Missions Involvement

Tuckaseegee Association

Legend: 22 -- Miss. Project Participation 22a -- Local Community 22b -- State/National 22c -- Canada 22d -- International

CONGREGATION	C/M	22	22a	22b	22c	22d
Scotts Creek Bapt Ch	C	8	0	0	0	8
Shoal Creek	C	0	0	0	0	0
Sols Creek	C	0	0	0	0	0
Speedwell Bapt Ch	C	0	0	0	0	0
Sylva First Bapt	C	185	168	10	2	5
Tilley Creek	C	0	0	0	0	0
Tuckaseegee Bapt Ch	C	0	0	0	0	0
Unity	C	0	0	0	0	0
Webster	C	42	0	0	42	0
Wilkesdale	C	0	0	0	0	0
Zion Hill	C	0	0	0	0	0
Total:		2,215	970	497	277	471

Missions Education

Tuckasegee Association

Legend: 23 -- Total WMU Enrollment 23a -- Ages Birth-5 23b -- Ages 6-11 23c -- Ages 12-17 23d -- Ages 18 up 23e -- WMU Leadership Team 24 -- Total Brotherhood Enrollment 24a -- Ages 6-11 24b -- Ages 12-17 24c -- Ages 18 up 25 -- Other Missions Education

CONGREGATION	C/M	23	23a	23b	23c	23d	23e	24	24a	24b	24c	25
Rockdale Bapt Ch	C	0	0	0	0	0	0	0	0	0	0	0
Scotts Creek Bapt Ch	C	45	0	0	0	45	0	0	0	0	0	0
Shoal Creek	C	4	0	0	0	4	0	0	0	0	0	0
Sols Creek	C	0	0	0	0	0	0	0	0	0	0	0
Speedwell Bapt Ch	C	0	0	0	0	0	0	0	0	0	0	0
Sylva First Bapt	C	103	15	16	8	57	7	71	6	5	50	2
Tilley Creek	C	0	0	0	0	0	0	0	0	0	0	0
Tuckasegee Bapt Ch	C	0	0	0	0	0	0	0	0	0	0	0
Unity	C	0	0	0	0	0	0	0	0	0	0	0
Webster	C	0	0	0	0	0	0	0	0	0	0	25
Wilkesdale	C	8	0	0	0	8	0	0	0	0	0	0
Zion Hill	C	15	0	0	0	15	0	0	0	0	0	0
Total:		502	30	45	44	349	34	126	9	5	102	27

Financial - General

Tuckaseegee Association

Legend: 26 -- Undesignated Gifts 27 -- Designated Gifts 28 -- Other Receipts TRE -Total Receipts (26+27+28) 36 -- Value Cong. Property 37 -- Congregational Debt

CONGREGATION	C/M	26	27	28	TRE	36	37
Balsam Bapt	C	\$0	\$0	\$0	\$0	\$0	\$0
Big Ridge	C	\$0	\$0	\$0	\$0	\$0	\$0
Black Mountain	C	\$25,481	\$5,006	\$0	\$30,487	\$150,000	\$0
Buff Creek Bapt Ch	C	\$56,615	\$3,735	\$0	\$60,350	\$1,088,000	\$0
Calvary	C	\$18,658	\$1,032	\$0	\$19,690	\$150,000	\$0
Cashiers Bapt Ch	C	\$126,018	\$55,250	\$0	\$181,268	\$1,317,000	\$0
Cullowhee Bapt Ch	C	\$1,286	\$4,600	\$3,500	\$9,386	\$25,000,000	\$0
Cullowhee Valley Bapt	C	\$17,684	\$621	\$0	\$18,305	\$87,000	\$0
Deitz Memorial	C	\$11,497	\$527	\$4,560	\$16,584	\$60,000	\$0
Dicks Creek Bapt Ch	C	\$6,079	\$2,993	\$0	\$9,072	\$95,000	\$0
East Fork Bapt	C	\$30,976	\$0	\$0	\$30,976	\$0	\$0
East Sylva	C	\$151,265	\$39,562	\$11,733	\$202,560	\$1,858,000	\$68,044
Faith Baptist Church	C	\$63,630	\$11,214	\$0	\$74,844	\$100,000	\$0
Greens Creek Bapt Ch	C	\$48,373	\$6,850	\$546	\$55,769	\$280,000	\$0
Hamburg	C	\$98,706	\$28,386	\$1,935	\$129,027	\$360,600	\$0
Hyatts Chapel	C	\$36,453	\$5,600	\$0	\$42,053	\$180,000	\$0
Jarrett Memorial Bapt	C	\$34,690	\$2,535	\$9,298	\$46,523	\$0	\$0
Liberty Bapt Ch	C	\$0	\$50	\$0	\$50	\$3,000,000	\$0
Little Savannah	C	\$24,984	\$2,031	\$430	\$27,445	\$200,000	\$0
Locust Field Bapt	C	\$9,822	\$19,378	\$2,393	\$31,593	\$250,000	\$49,823
Long Branch Missionary	C	\$2,274	\$2,475	\$24,857	\$29,606	\$70,000	\$0
Lovedale Bapt Ch	C	\$64,941	\$7,057	\$3,853	\$75,851	\$1,260,000	\$0
Lumberton	C	\$5,594	\$850	\$0	\$6,444	\$0	\$0
Moses Creek Bapt Ch	C	\$47,673	\$0	\$0	\$47,673	\$150,000	\$0
Mount Pleasant	C	\$0	\$0	\$0	\$0	\$0	\$0
New Hope Bapt Ch	C	\$68,663	\$37,983	\$538	\$107,184	\$850,000	\$10,000
New Savannah	C	\$11,288	\$105	\$3	\$11,396	\$190,000	\$0
Ochre Hill Bapt Ch	C	\$86,000	\$3,300	\$0	\$89,300	\$815,000	\$0
Old Savannah	C	\$92,279	\$9,140	\$0	\$101,419	\$450,000	\$0
Pine Creek	C	\$0	\$30,000	\$0	\$30,000	\$400,000	\$0
Promise Land	C	\$19,755	\$6,901	\$453	\$27,110	\$0	\$19,332
Rockdale Bapt Ch	C	\$35,700	\$0	\$0	\$35,700	\$192,000	\$3,600
Scotts Creek Bapt Ch	C	\$204,924	\$32,591	\$0	\$237,515	\$2,105,000	\$0
Shoal Creek	C	\$56,892	\$0	\$0	\$56,892	\$0	\$0

Financial - General

Tuckasegee Association

Legend: 26 -- Undesignated Gifts 27 -- Designated Gifts 28 -- Other Receipts TRE -Total Receipts (26+27+28) 36 -- Value Cong. Property 37 -- Congregational Debt

CONGREGATION	C/M	26	27	28	TRE	36	37
Sols Creek	C	\$0	\$0	\$0	\$0	\$0	\$0
Speedwell Bapt Ch	C	\$8,652	\$9,262	\$0	\$17,914	\$165,220	\$0
Sylva First Bapt	C	\$360,275	\$60,000	\$38,159	\$458,434	\$5,000,000	\$43,000
Tilley Creek	C	\$0	\$0	\$0	\$0	\$0	\$0
Tuckasegee Bapt Ch	C	\$0	\$1,852	\$0	\$1,852	\$0	\$0
Unity	C	\$0	\$0	\$0	\$0	\$0	\$0
Webster	C	\$171,541	\$0	\$0	\$171,541	\$0	\$0
Wilkesdale	C	\$0	\$0	\$0	\$0	\$0	\$0
Zion Hill	C	\$20,717	\$48,518	\$0	\$69,235	\$0	\$0
Total:		\$2,019,384	\$439,405	\$102,258	\$2,561,047	\$45,822,820	\$193,799

Financial - Missions

Tuckaseigee Association

*Legend: 29 -- Cooperative Programs 30 -- Assoc. Missions 31 -- State Missions 32 -- Annie Armstrong 33 -- Lottie Moon
34 -- Other SBC Miss. Exp. 35 -- Non-SBC Miss. Exp. TME -- Total Mission Expenditures (29-35)*

CONGREGATION	C/M	29	30	31	32	33	34	35	TME
Balsam Bapt	C	\$0	\$0	\$0	\$0	\$0	\$0	\$0	\$0
Big Ridge	C	\$0	\$0	\$0	\$0	\$0	\$0	\$0	\$0
Black Mountain	C	\$0	\$400	\$0	\$0	\$0	\$1,511	\$1,930	\$3,841
Buff Creek Bapt Ch	C	\$2,810	\$1,200	\$468	\$320	\$759	\$454	\$0	\$6,011
Calvary	C	\$373	\$100	\$0	\$100	\$100	\$200	\$0	\$873
Cashiers Bapt Ch	C	\$3,000	\$1,800	\$400	\$12,319	\$14,939	\$2,239	\$0	\$34,697
Cullowhee Bapt Ch	C	\$0	\$900	\$408	\$0	\$0	\$0	\$0	\$1,308
Cullowhee Valley Bapt	C	\$127	\$120	\$134	\$125	\$115	\$2,924	\$2,603	\$6,148
Deitz Memorial	C	\$750	\$600	\$300	\$100	\$100	\$0	\$260	\$2,110
Dicks Creek Bapt Ch	C	\$0	\$132	\$276	\$141	\$173	\$130	\$3,000	\$3,852
East Fork Bapt	C	\$550	\$600	\$335	\$200	\$300	\$100	\$6,840	\$8,925
East Sylva	C	\$0	\$1,000	\$2,000	\$2,102	\$2,500	\$1,493	\$10,600	\$19,695
Faith Baptist Church	C	\$6,363	\$1,909	\$552	\$456	\$1,054	\$520	\$9,813	\$20,667
Greens Creek Bapt Ch	C	\$5,400	\$2,520	\$110	\$425	\$1,023	\$1,348	\$2,457	\$13,283
Hamburg	C	\$6,430	\$2,400	\$400	\$857	\$5,900	\$1,785	\$10,464	\$28,236
Hyatts Chapel	C	\$600	\$0	\$1,000	\$1,000	\$1,200	\$0	\$1,200	\$5,000
Jarrett Memorial Bapt	C	\$900	\$900	\$290	\$485	\$1,056	\$728	\$1,080	\$5,439
Liberty Bapt Ch	C	\$0	\$0	\$600	\$0	\$0	\$0	\$0	\$600
Little Savannah	C	\$400	\$590	\$300	\$502	\$495	\$0	\$1,806	\$4,093
Locust Field Bapt	C	\$225	\$200	\$203	\$232	\$476	\$1,228	\$545	\$3,109
Long Branch Missionary	C	\$0	\$120	\$460	\$397	\$279	\$0	\$0	\$1,256
Lovedale Bapt Ch	C	\$6,110	\$1,948	\$497	\$2,000	\$3,047	\$2,478	\$2,003	\$18,083
Lumberton	C	\$0	\$400	\$0	\$100	\$100	\$250	\$0	\$850
Moses Creek Bapt Ch	C	\$0	\$0	\$0	\$0	\$400	\$2,800	\$5,987	\$9,187
Mount Pleasant	C	\$0	\$0	\$0	\$0	\$0	\$0	\$0	\$0
New Hope Bapt Ch	C	\$538	\$300	\$2,000	\$0	\$1,064	\$0	\$4,218	\$8,119
New Savannah	C	\$200	\$100	\$500	\$100	\$200	\$0	\$600	\$1,700
Ochre Hill Bapt Ch	C	\$0	\$2,400	\$2,400	\$1,518	\$3,039	\$100	\$0	\$9,457
Old Savannah	C	\$0	\$0	\$0	\$445	\$1,016	\$0	\$0	\$1,461
Pine Creek	C	\$0	\$0	\$0	\$0	\$0	\$0	\$0	\$0
Promise Land	C	\$0	\$55	\$0	\$0	\$0	\$0	\$0	\$55

Financial - Missions

Tuckaseegee Association

*Legend: 29 -- Cooperative Programs 30 -- Assoc. Missions 31 -- State Missions 32 -- Annie Armstrong 33 -- Lottie Moon
34-- Other SBC Miss. Exp. 35 -- Non-SBC Miss. Exp. TME -- Total Mission Expenditures (29-35)*

CONGREGATION	C/M	29	30	31	32	33	34	35	TME
Rockdale Bapt Ch	C	\$0	\$360	\$0	\$128	\$932	\$600	\$1,120	\$3,140
Scotts Creek Bapt Ch	C	\$20,492	\$6,721	\$1,090	\$3,000	\$4,419	\$1,740	\$0	\$37,462
Shoal Creek	C	\$5,809	\$1,800	\$36	\$545	\$545	\$0	\$725	\$9,460
Sols Creek	C	\$0	\$0	\$0	\$0	\$0	\$0	\$0	\$0
Speedwell Bapt Ch	C	\$86	\$360	\$1,463	\$100	\$125	\$0	\$100	\$2,234
Sylva First Bapt	C	\$27,300	\$8,400	\$2,000	\$1,779	\$7,103	\$0	\$1,243	\$47,825
Tilley Creek	C	\$0	\$0	\$0	\$0	\$0	\$0	\$0	\$0
Tuckaseegee Bapt Ch	C	\$950	\$638	\$0	\$120	\$101	\$0	\$4,966	\$6,775
Unity	C	\$0	\$0	\$0	\$0	\$0	\$0	\$0	\$0
Webster	C	\$5,767	\$960	\$0	\$0	\$3,926	\$200	\$0	\$10,853
Wilkesdale	C	\$0	\$0	\$0	\$155	\$265	\$0	\$0	\$420
Zion Hill	C	\$300	\$0	\$420	\$261	\$535	\$0	\$0	\$1,516
Total:		\$95,480	\$39,933	\$18,642	\$30,012	\$57,286	\$22,828	\$73,560	\$337,740

Item	QTY	UNIT	PRICE	TOTAL	TAX	NET
1000	100	EA	10.00	1000.00	100.00	900.00
2000	200	EA	20.00	4000.00	400.00	3600.00
3000	300	EA	30.00	9000.00	900.00	8100.00
4000	400	EA	40.00	16000.00	1600.00	14400.00
5000	500	EA	50.00	25000.00	2500.00	22500.00
6000	600	EA	60.00	36000.00	3600.00	32400.00
7000	700	EA	70.00	49000.00	4900.00	44100.00
8000	800	EA	80.00	64000.00	6400.00	57600.00
9000	900	EA	90.00	81000.00	8100.00	72900.00
10000	1000	EA	100.00	100000.00	10000.00	90000.00
GRAND TOTAL				500000.00	50000.00	450000.00

RECEIVED OF THE ABOVE SALES
 DATE: 10/10/2023
 BY: [Signature]
 ACCOUNTANT: [Signature]

