

RANDOLPH BAPTIST ASSOCIATION

of North Carolina

REV. RALPH HOLCOMB, Moderator

REV. R. L. HUGHES, Vice Moderator

1971 - 1972 THEME:

"The Lordship of Christ"

37th ANNUAL SESSION

1971

MACEDONIA BAPTIST CHURCH, Liberty N. C.

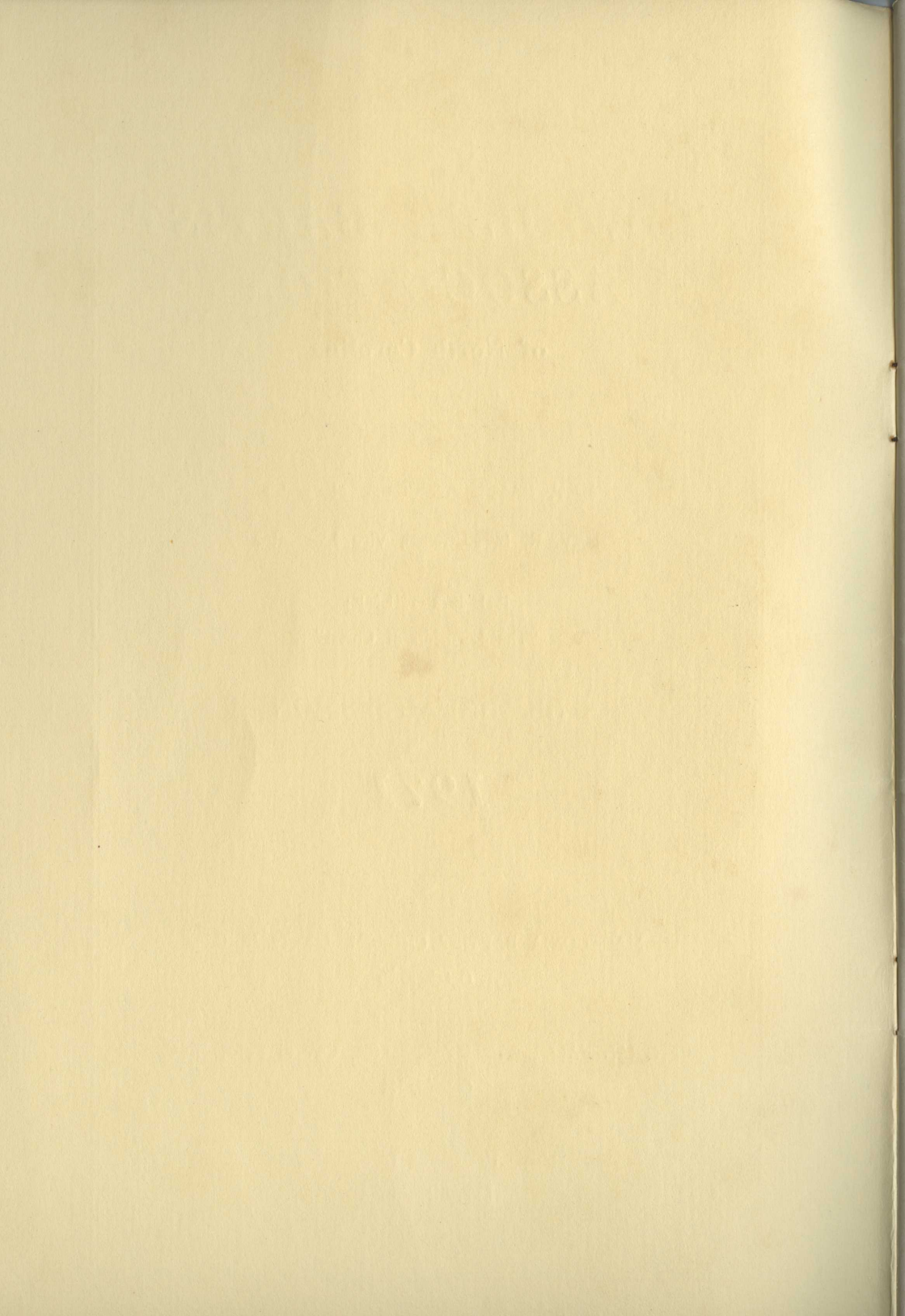
October 20

CENTRAL FALLS BAPTIST CHURCH, Central Falls, N. C.

October 21

Music Under The Direction of

Larry Freeman



RANDOLPH BAPTIST ASSOCIATION

of North Carolina

37th ANNUAL SESSION

1971

Held with

Macedonia Baptist, First Day

Central Falls Baptist, Second Day

October 20 - 21

Next Session

October 18, 19, 1972

Wednesday, October 18 — Randleman First

Thursday, October 19 — Shady Grove Baptist

Annual Sermon: Troy Jones; Alternate: Harvey Rumfelt

Doctrinal Sermon: B. G. Pratt; Alternate: Austol Youmans

TABLE OF CONTENTS

| | |
|---|----|
| ASSOCIATIONAL DIRECTORY | 3 |
| CONSTITUTION AND BY - LAWS | 5 |
| PROCEEDINGS | |
| Wednesday Morning Session | 10 |
| Report of Executive Committee | 11 |
| Report of Treasurer | 11 |
| Budget for 1972 | 12 |
| Suggested Goals for 1972 | 13 |
| Record of Receipts | 14 |
| Report of Randolph W.M.U. | 15 |
| Report on Brotherhood | 16 |
| Report on State Missions | 17 |
| Report on Home Missions | 17 |
| Report on Foreign Missions | 18 |
| Wednesday Afternoon Session | |
| Report on Sunday School | 20 |
| Report on Cooperative Program | 20 |
| Report on Music | 21 |
| Report on Christian Education | 22 |
| Report on Church Training | 24 |
| Thursday Morning Session | |
| Report of Associational Field Workers | 25 |
| Report on Christian Literature | 26 |
| Report on Annuity Board | 27 |
| Report on Children's Homes | 28 |
| Report on Evangelism | 28 |
| Report on Baptist Hospital | 29 |
| Report on Baptist Homes for The Aging | 30 |
| Committee on Place and Preacher | 31 |
| Report of Committee on Memorials | 32 |
| STATISTICAL TABLES | 34 |

1971 - 1972

ASSOCIATIONAL DIRECTORY

Moderator ----- R. L. Hughes Clerk ----- Fred Lane
Vice Moderator ----- Carl King Treasurer ----- James R. Lane

Associational Officers

Brotherhood Director ----- Carl Zeigler
Music Director ----- Larry Freeman
Trustees: H. Wade Yates, Chairman
 W. Sumner Farlow
 Wiley Jones
Chairman of Evangelism ----- M. A. Pegram
Hospital Representative ----- John Jackson
Children's Home Representative ----- T. W. Nelson
Baptist Homes for Aging Representative:
Literature Chairman ----- Hansel Neathery
Temperance and Morals ----- Neal Cockerham
Annuity Board Chairman ----- Carl King

Sunday School Officers

Sunday School Director ----- Troy E. Jones
Division Directors:
 Pre-School Director ----- Mrs. W. T. Denson,
 Mrs. Cecil Hilliard
 Children's Director ----- Otus Thomas
 Youth Director ----- W. A. Gillett
 Adult Director ----- Benny Hampton
Vacation Bible School Director

Committees

Committee on Ordination

Troy E. Jones, Chairman
 B. G. Pratt
 W. E. Eaton
 H. C. Neathery
 Bennie Maness

Committee on Missions

J. B. Gibson, Chairman
 Austol Youmans
 Fred Carlton
 John Mangum

Committee on Organization of New Churches

Carl Zeigler, Chairman
 Curtis Barbery
 Albert Taylor

Committee on Appreciation

Mrs. Carl King, Chairman
 Mrs. Austol Youmans

Committee on Place and Preacher

Thurman Williams, Chairman
 Donnie Yates
 Bill Barnes

Resolutions Committee

J. B. Gibson, Chairman
 M. A. Pegram
 T. W. Nelson

Committee on Constitution

Wade Yates, Chairman
 A. B. York, Jr.
 Otus Thomas

Committee on Nominations

Kermit Pell, Chairman
 Willis Swift
 Ray Cashatt
 Joe Anderson
 M. A. Pegram

Committee on Memorials

John Jackson, Chairman
 Darrell Cox

Committee on Order of Business

Francis Lunsford, Chairman
 J. T. Martin
 Ralph Holcomb
 Wade Yates
 T. W. Nelson

House and Grounds Committee

Marvin Caviness, Chairman
 Fletcher Skeen
 Mrs. J. B. Gibson

Committee on Budget and Finance

Earl Underwood, Chairman
 James Lane
 J. B. Gibson
 Colon McNeill
 William A. Gillett

CONSTITUTION AND BY-LAWS

ARTICLE I — NAME AND OBJECT

Section 1. The name of the organization shall be the Randolph Baptist Association.

Section 2. The purpose of this organization shall be:

- a. The promotion of harmony, fellowship and cooperation among the churches of the Association.
- b. The propagation of the Gospel within the territory of the Association and to the uttermost part of the earth.
- c. The promotion of the missionary, education and benevolent causes of Christ within the Association and in cooperation with the Baptist State Convention of North Carolina and the Southern Baptist Convention.

ARTICLE II — MEMBERSHIP

Section 1. The membership of the Association shall consist of messengers of Baptist churches regularly affiliated with the Association. All churches desiring affiliation with the Association shall present to the Committee on Reception of New Churches proper petitions, accompanied by satisfactory evidences of doctrinal regularity and general acceptability. After one year under the watchcare of the Association the said Committee will report to the Association its recommendation. Upon a favorable vote of two-thirds majority of the messengers present at the annual associational meeting the petitioning church may become regularly affiliated with the Association.

Section 2. (A) Fellowship may be withdrawn by the Association at any annual meeting, upon recommendation of the Executive Committee, from any church in its membership that has been found, by due investigation, to have departed from the Missionary Baptist faith and practices, or has failed to abide by the provision of this Constitution and By-Laws.

(B) Such a church may, upon recommendation of the Executive Committee and vote of the Association, be placed on probation until the conditions prompting such action have been corrected. Messengers from any church on probation shall not be allowed to vote in the meetings of the Association.

Section 3. It shall be the duty of each church to furnish to the Association each year a letter, on the form provided by the Clerk, giving full information and statistics provided for on the form, and to send with the letter or by messenger a contribution toward the cost of printing the minutes and other expenses of the Association.

Section 4. It is understood that each church in this Association is independent and sovereign in its own affairs, and the Association has no authority over the churches, except of an advisory nature.

Section 5. A church may withdraw from membership in the Association by a vote of the church according to its own by-laws, regulations or procedure.

ARTICLE III — MEETINGS

Section 1. The Association shall meet annually on two days during the week following the Third Sunday in October.

Section 2. The annual meeting shall be composed of messengers

chosen by the respective churches of the Association from their membership. *Each church shall be entitled to three messengers and one additional messenger for each fifty members, or fraction thereof, above one hundred it has enrolled, but not to exceed ten such messengers.* All pastors in the Association and the Field Worker are messengers in all the Associational Meetings, each having but one vote.

Section 3. The Association may hold a Mid-Term meeting each spring at such time and place as may be determined by the Association or its Executive Committee. The purpose of the Mid-Term meeting shall be that of information and inspiration without the transaction of business, except that urgent matters of business which cannot well be delayed until a later meeting may be considered and acted upon.

Section 4. Other meetings of the Association may be held when called by the Executive Committee.

ARTICLE IV — OFFICERS

Section 1. The officers of this Association shall be Moderator, Vice-Moderator, Clerk, Treasurer, and three Trustees.

Section 2. These officers shall be elected on the first day of the regular annual session. The prior approval and consent to serve, if elected, shall have been secured from a prospective nominee prior to placing his name in nomination for any one of the several associational elective offices. They shall take office at the close of the Annual Session and serve through the next Annual Session. Any officer may be re-elected with the exception of the Moderator, who shall not serve more than two years in succession.

Section 3. Duties of the Officers:

- a. The Moderator shall preside over all meetings of the Association and discharge such duties as are incumbent on the presiding officer of a deliberative body.
- b. The Vice-Moderator shall perform the duties of the Moderator in the absence of or at the request of the Moderator.
- c. The Clerk shall record and preserve the proceeding of the Association, together with the reports and statistics, and have the same printed and distributed. The Treasurer shall preserve all money paid into the treasury, pay the same to the order of the Association, and make a full and complete report of all receipts and disbursements at the Annual Meeting.
- d. The duties of the Trustees shall be to transfer or hold title to any properties for the Association. All transactions of said Trustees shall be authorized by the Association or its Executive Committee.

Section 4. The Association endorses the continued operation of organizations among the churches of the Association for the promotion of the various phases of their work including the Sunday School, Baptist Training Union, Baptist Brotherhood and Woman's Missionary Union. The officers of the Associational Sunday School, Associational Baptist Training Union, and the Associational Baptist Brotherhood shall be nominated by their Nominating Committee and the Nominating Committee of the Association, and approved and elected by the Executive Committee of the Association, and shall serve from October 1 to September 30. The Woman's Missionary Union shall be recognized as an auxiliary organization of the Association.

ARTICLE V — EXECUTIVE COMMITTEE

Section 1. The Association shall have an Executive Committee comprised of the Moderator, Vice-Moderator, Clerk, Treasurer, Trustees of the Association, Associational Sunday School Director, Associational Church Training Director, Associational Baptist Brotherhood Director, Associational Woman's Missionary Union Director, the Associational Field Worker, all pastors, all church educational directors, and one member of each church in the Association desiring representation on the Committee.

Section 2.

- a. The Executive Committee shall hold meetings once each quarter during the second month of the quarter, the date to be set by the Board itself, and at such other times as may be required at the call of the Moderator, or at the call of not less than five members of the Executive Committee.
- b. Twenty members of the Executive Committee shall be required to be present to constitute a quorum.
- c. To act for and on behalf of the Association between sessions.
- d. To carry out the orders and resolutions of the Association pertaining to it.
- e. To superintend the Associational Mission work, employ a missionary and determine the salary to be paid.
- f. To *fill* vacancies which may occur during the year in the personnel of the Associational officers or workers for the remainder of such unexpired term.
- g. To investigate any report of complaint that may be brought to its attention about irregularity of doctrine, practice, or conduct on the part of any individual or group in the Association and report its finding with such recommendations as it considers advisable, to the Association in a regular meeting.
- h. To make such recommendations as it may deem wise for the strengthening and upbuilding of the churches and the work of the Association.
- i. The Executive Committee shall not involve the Association in debt to exceed one hundred dollars for necessary operating expenses of the Association.
- j. To appoint and elect the officers for the Associational organizations of the Sunday School, Church Training, and Baptist Brotherhood.

ARTICLE VI — ASSOCIATIONAL COUNCIL

Section 1:

- a. The Associational Council shall be composed of the following Associational officers: Moderator, Vice Moderator, Clerk, Treasurer, Associational Sunday School Director, Associational Church Training Director, Associational Woman's Missionary Union Director, Associational Brotherhood Director, Associational Music Director, Chairman of the Evangelism Committee, Chairman of the Budget Committee, Chairman of the Missions Committee, the Field Worker, and others deemed necessary by the Moderator to carry on the work of the Association.

RANDOLPH BAPTIST ASSOCIATION

- b. The Moderator shall serve as Chairman of the Council, the Vice-Moderator as vice chairman, and the clerk as secretary.

Section 2:

- a. The Associational Council shall hold meetings once each quarter and at such other times as deemed necessary by the Chairman or at the call of not less than 5 members of the Council.
- b. Seven members of the Council shall be present to constitute a quorum.
- c. The duties of the Associational Council shall be:
 - (1) To plan the general work of the Association.
 - (2) To assign responsibility of the implementation of proposed plans.
 - (3) To receive and help correlate into a general associational program the proposed plans of the individual organizations.
- d. The Council shall give a quarterly report to the Associational Executive Committee along with any recommendations it may have.

ARTICLE VII — COMMITTEES

Section 1. The Moderator shall appoint a Committee on Committees some weeks before the annual meeting of the Association. This Committee shall prepare its report and shall be given the opportunity to submit its report early on the program of the first day of the annual session. The Committee shall name the following committees to report during the annual session: Committee on Memorials, Committee on Appreciation, and such other committees as may be requested by the Association or Moderator. The Committee on Committees shall also name the following standing committees: Committee on Ordination, Committee on Reception of new churches, Committee on Time, Place and Preacher, Nominating Committee, Committee on Order of Business, Constitution and By-Laws Committee, Budget and Finance Committee, Missions Committee, and such other committees as may be requested by the Association or by the Moderator.

Section 2. Duties of the Committees:

- a. The Committee on Time, Place and Preacher will receive all invitations of the churches which desire the Association to meet with them the next year and will recommend to the Association the time and place to meet the following year, without regard to the order in which the invitations may have been received. This Committee will also recommend a preacher and an alternate for the annual sermon and the doctrinal sermon next session.
- b. The Committee on Memorials will prepare a list of those members of the churches who have died during the year and present suitable memorial resolutions for adoption by the Association.
- c. The Committee on Appreciation will prepare and present appropriate resolutions of appreciation.
- d. The Committee on Order of Business will prepare well in advance a suggested order of business for the annual meeting. The committee will notify those who are to make

reports or have part on the program. This suggested order of business will then be presented to the Association at its regular meeting.

- e. The Nominating Committee shall nominate a complete slate of officers for the next year, excepting the Moderator, Vice-Moderator, Clerk and Treasurer.
- f. Guiding Principles for the Work of the Missions Committee of the Randolph Association.
 1. The Committee is to seek to discover areas where new work is needed and to lead in the sponsorship or establishment of new work to meet present need or the securing of property by a local church and/or the Association in the anticipation of future need.
 2. All new work does not necessarily need to be nor should be intended to become an organized or constituted church. New work may be started and maintained on the basis of a mission to meet particular need (this provides for institutional missions such as jails, prisons, rest homes, etc.)
 3. The location of missions or new churches shall be determined by the need revealed in an adequate survey conducted by the Missions Committee and local interested groups or churches.
 4. Any church, committee, group or individuals considering beginning new work, acting with or without church sponsorship, should approach the Missions Committee for guidance before having any service or choosing a temporary or permanent location.
 5. The Missions Committee shall institute basic, understandable operational procedures and practices for a mission that leads in establishing and strongly urges that each church establishing a mission does the same. The guidance of missions by the Missions Committee shall continue until a co-operating church or churches can be led to accept the responsibility of sponsorship.
 6. A mission organized or assisted by the Missions Committee shall accept the recognized principles and practices of a church co-operating with the Randolph Association, the Baptist State Convention and the Southern Baptist Convention.

ARTICLE VIII — ORDINATION AND CALLING OF PASTORS

Section 1. Inasmuch as the ordination of a man to the gospel ministry by any church in this Association is expected to be recognized by the denomination as a whole, the churches are counseled to be extremely careful in the matter of setting men apart for this sacred calling, ordaining only those who, by irreproachable character, piety of life, doctrinal soundness and suitable talents, give promise of honoring the name of Christ and of rendering acceptable service in the missionary Baptist ministry.

Section 2. To aid the churches in this vital matter, the Association will appoint each year a committee of five of the pastors to be called the Committee on Ordination. Any church desiring to ordain a brother to the ministry may request the said Committee to act as a presbytery for the purpose of examining the brother as to his

fitness for the Baptist ministry, and, if he is found qualified, to assist in the ordination.

Section 3. The churches are urged also to exercise the utmost care and wisdom, earnestly seeking the guidance of the Holy Spirit, in calling of their pastors, choosing only men who give evidence by their Christian character, cooperative spirit and leadership ability, that they will serve the best interests of the churches, the denomination, and the cause of Christ.

ARTICLE IX — NEW CHURCHES

Baptist churches may be organized and established in localities within the territory of this Association when such new churches are seen to be needed. Those interested in organizing a new church may seek the Counsel of the Executive Committee and the Missions Committee of the Association.

ARTICLE X — RULES AND ORDER OF DECORUM

This Association shall be governed in its meetings by such rules and by-laws as may be adopted, amended, or set aside by a majority vote of the messengers present. *Robert's Rules of Order* will be the guide in all parliamentary matters.

ARTICLE XI — ADOPTION

The Constitution and By-Laws shall take effect immediately upon its adoption by a two-thirds majority vote of the messengers present and shall supersede any and all constitutions, by-laws, and amendments previously adopted.

ARTICLE XII — AMENDMENTS

This Constitution and By-Laws may be amended at any regular annual meeting by a two-thirds majority vote of the messengers present, provided the proposed amendment shall have been presented in written form on the first day of the Annual Meeting. The vote on any proposed amendment so presented may be deferred until the second day if requested by a majority vote of the messengers present.

PROCEEDINGS

The 37th Annual Session of the Randolph Baptist Association convened on Wednesday Morning, October 20, 1971 at the Macedonia Baptist Church.

1. The Annual Session was called to order at 9:30 A. M. by the Moderator, Rev. Ralph Holcomb.

2. Opening Hymn No. 41 — "To God Be The Glory" led by Mr. Larry Freeman and Mrs. Barbara Winslow at the organ.

3. The pastor of the Host Church, Rev. Raleigh Castelloe, read from the 13th chapter of Corinthians and gave the opening prayer. Rev. Castelloe welcomed the messengers.

4. Roll call of the messengers at this time by Fred Lane. Motion was made, seconded, and approved that those present at this time and that would register later constitute the 37th Annual Session.

5. The Order of Business was presented by Rev. R. L. Hughes and adopted as presented.

6. Rev. R. T. Smith, Field Worker for the Association, presented the following; new pastors; Rev. Darrell Cox, Maple Springs; Rev. Justus McKeel, Ramseur; Rev. Andy Grose, Greystone, and Mr. John Samuel, Education Director at the Asheboro, First.

7. Executive Committee report presented by Fred Lane, Clerk.

Executive Committee Report

One of the most important matters to come before the Executive Committee this past year was that of a night session for the Annual Session of the Association. After quite a bit of discussion, this matter was referred to the Council for further study and a recommendation. The Council did recommend that the Constitution and By-Laws Committee be instructed to bring to the Association such changes in the Constitution, making it possible to hold a Night Session, should the Association desire.

The Executive Committee voted its approval of the "World Missions Conferences" for March 25-30, 1973.

Another matter of importance, the Evangelism Committee is studying the possibility of having a Central Revival in the year 1974.

Respectfully submitted,
Fred Lane, Clerk

8. Committee on Committees report presented at this time by Raleigh Castelleo. This report will be found in the directory part of the minutes.

9. Proposed Constitution changes were presented by Rev. Austol Youmans.

10. Bro. Castelleo informed the messengers that lunch would be served at the Julian Lions Club center in Julian.

11. James Lane, Treasurer, presented his report at this time.

Treasurer's Report

| | |
|--|--------------------|
| Balance, October 1, 1970 ----- | \$ 1,289.00 |
| Receipts 10-1-70 through 9-30-71 ----- | 14,473.55 |
| | <u>\$15,762.55</u> |

Disbursements:

| | |
|-------------------------------|-----------|
| Utilities ----- | \$ 698.26 |
| Supplies ----- | 984.30 |
| Secretary ----- | 1,137.28 |
| Talmage Smith ----- | 7,770.00 |
| Speakers ----- | 175.00 |
| Convention Expense ----- | 35.00 |
| Professional Literature ----- | 22.10 |
| Treasurer ----- | 262.50 |
| Clerk ----- | 262.50 |
| Church Training ----- | 177.32 |
| Retirement ----- | 320.00 |
| Social Security ----- | 57.71 |
| Insurance ----- | 359.00 |
| Vacation Bible School ----- | 18.00 |
| Sunday School ----- | 147.61 |
| W.M.U. ----- | 363.18 |
| Telephone ----- | 450.39 |
| Repairs ----- | 456.91 |
| Minutes ----- | 687.01 |
| Music ----- | 5.73 |
| Missions ----- | 30.43 |
| Sandy Creek ----- | 50.00 |

| | |
|-----------------------------------|--------------------|
| Total Disbursements ----- | <u>\$14,440.28</u> |
| Balance, September 30, 1971 ----- | \$ 1,322.27 |
| Savings Fund Balance ----- | <u>\$ 2,311.51</u> |

Respectfully submitted,
James R. Lane

12. The 1972 Budget was presented for approval by Rev. Raleigh Castelleo.

Randolph Baptist Association Budget For 1972

| | 1972 Budget |
|--|--------------------|
| Church Training, "M" Night and Youth Night ----- | \$ 325.00 |
| Sunday School ----- | 300.00 |
| Pastorium Maintenance ----- | 1,000.00 |
| Bulletins, Supplies, Postage, Printing ----- | 975.00 |
| Telephone ----- | 600.00 |
| Minutes ----- | 750.00 |
| Insurance ----- | 100.00 |
| Fuel, Lights, and Water ----- | 700.00 |
| Assistance to Churches ----- | 200.00 |
| Shubal Stearns Memorial ----- | 50.00 |
| Evangelism ----- | 100.00 |
| Brotherhood and R. A.'s ----- | 100.00 |
| Denominational Meetings ----- | 300.00 |
| Secretary ----- | 1,500.00 |
| Music Department ----- | 100.00 |
| Office Equipment ----- | 200.00 |
| Visual Aids ----- | 100.00 |
| Hospital Insurance ----- | 425.00 |
| W.M.U. ----- | 300.00 |
| Speakers for Annual Session ----- | 200.00 |
| Miscellaneous ----- | 200.00 |
| Clerk ----- | 270.00 |
| Treasurer ----- | 270.00 |
| Professional Literature ----- | 100.00 |
| Salary ----- | 5,800.00 |
| Travel Expense ----- | 2,200.00 |
| Retirement ----- | 320.00 |
| Total Budget for 1972 ----- | \$17,485.00 |

Randolph Baptist Association Suggested Goals For 1972

| | 1972 <u>Monthly</u> | 1972 <u>Annually</u> |
|---|------------------------|-------------------------|
| Antioch | \$ 10.00 | \$ 120.00 |
| Armfield Heights | 20.00 | 240.00 |
| Asbury | 30.00 | 360.00 |
| Asheboro, First | 200.00 | 2,400.00 |
| Balfour | 80.00 | 960.00 |
| Beulah | 60.00 | 720.00 |
| Calvary | 10.00 | 120.00 |
| Caraway | 15.00 | 180.00 |
| Cedar Falls | 12.00 | 144.00 |
| Center Cross | 12.00 | 144.00 |
| Central Falls | 25.00 | 300.00 |
| Clear View | 25.00 | 300.00 |
| Cool Springs | 10.00 | 120.00 |
| Deep River | 30.00 | 360.00 |
| Fayetteville Street | 35.00 | 420.00 |
| Franklinville | 60.00 | 720.00 |
| Forest Park | 35.00 | 180.00 |
| Glenola | 35.00 | 420.00 |
| Gravel Hill | 15.00 | 180.00 |
| Greystone | 35.00 | 420.00 |
| High Rock | 10.00 | 120.00 |
| Hughes Grove | 10.00 | 120.00 |
| Huldah | 20.00 | 240.00 |
| Jackson Creek | 10.00 | 120.00 |
| Liberty, First | 60.00 | 720.00 |
| Macedonia | 35.00 | 420.00 |
| Maple Springs | 25.00 | 300.00 |
| Mt. Lebanon | 35.00 | 420.00 |
| Mt. Pleasant | 35.00 | 420.00 |
| Oakhurst | 80.00 | 960.00 |
| Oakwood Park | 10.00 | 120.00 |
| Panther Creek | 5.00 | 60.00 |
| Ramseur, First | 80.00 | 960.00 |
| Randleman, First | 80.00 | 960.00 |
| Red Cross | 10.00 | 120.00 |
| Richland | 10.00 | 120.00 |
| Riverside | 20.00 | 240.00 |
| Russell's Grove | 70.00 | 840.00 |
| Sandy Creek | 15.00 | 180.00 |
| Seagrove, First | 10.00 | 120.00 |
| Shady Grove | 15.00 | 180.00 |
| Sophia | 10.00 | 120.00 |
| Union Grove | 60.00 | 720.00 |
| Westfield | 10.00 | 120.00 |
| White's Memorial | 15.00 | 180.00 |
| Worthville | 10.00 | 120.00 |
| Total Suggested Goals for 1972 | \$1,474.00 | \$17,688.00 |

Record of Receipts

October 1, 1970 through September 30, 1971

| | | |
|---------------------|----|-------------|
| Antioch | \$ | 130.00 |
| Armfield Heights | | 129.98 |
| Asbury | | 120.00 |
| Asheboro, First | | 2,400.00 |
| Balfour | | 960.00 |
| Beulah | | 305.00 |
| Calvary | | 90.00 |
| Caraway | | 100.00 |
| Cedar Falls | | 136.00 |
| Center Cross | | 75.00 |
| Central Falls | | 169.00 |
| Clear View | | 312.58 |
| Cool Springs | | 20.00 |
| Deep River | | 300.00 |
| Fayetteville Street | | - 0 - |
| Forest Park | | 147.75 |
| Franklinville | | 720.00 |
| Glenola | | 236.59 |
| Gravel Hill | | 7.20 |
| Greystone | | 350.00 |
| High Rock | | 5.00 |
| Hughes Grove | | 3.00 |
| Huldah | | 120.00 |
| Jackson Creek | | 60.00 |
| Liberty, First | | 600.00 |
| Macedonia | | 382.65 |
| Maple Springs | | 180.00 |
| Mt. Lebanon | | 240.00 |
| Mt. Pleasant | | 300.00 |
| Oakhurst | | 975.00 |
| Oakwood Park | | 120.00 |
| Panther Creek | | 60.00 |
| Ramseur | | 840.00 |
| Randleman, First | | 840.00 |
| Red Cross | | 10.00 |
| Richland | | 75.00 |
| Riverside | | 120.00 |
| Russell's Grove | | 843.05 |
| Sandy Creek | | 150.00 |
| Shady Grove | | 84.00 |
| Union Grove | | 600.00 |
| West Asheboro | | 30.00 |
| Westfield | | - 0 - |
| White's Memorial | | 15.00 |
| Worthville | | 90.00 |
| Seagrove | | - 0 - |
| Sophia | | - 0 - |
| Book Sales | | 63.75 |
| Miscellaneous | | 30.43 |
| State Convention | | 796.00 |
| Sales Tax refund | | 77.59 |
| Sunday School Board | | 52.98 |
| Total Receipts | | \$14,473.55 |

13. Hymn No. 20 — "O Worship the King" led by Mr. Larry Freeman, Mrs. Winslow at the organ.
14. Solo by Mr. Freeman: "My God and I."
15. Annual Sermon at this time by Rev. John Mangum. Scripture and prayer by W. E. Eaton.
16. Womans Missionary Union report was presented by Mrs. Carl King.

W.M.U. Report

The following people served as Associational W.M.U. Officers from October 1970 to April 1971 (Mrs. Larry Moore resigned soon after being elected due to her health, leaving a vacancy through April).

| | | |
|------------------------------|-------|------------------------|
| W.M.U. Director | ----- | Mrs. Carl King |
| Assistant W.M.U. Director | ----- | Mrs. Calvin Brower |
| Secretary & Treasurer | ----- | Mrs. Ed Ford |
| Baptist Women Director | ----- | Mrs. T. G. Meachum |
| Baptist Young Women Director | ----- | Mrs. Larry Moore |
| Acteens Director | ----- | Mrs. J. W. Smith |
| Girls in Action Director | ----- | Mrs. Teeny Scarborough |
| Mission Friends Director | ----- | Mrs. Fred Graham |
| Pianist | ----- | Mrs. Lloyd Brown |

Due to an Amendment to the By-Laws, approved April 26 at our Annual Meeting, the following officers began their term of office immediately upon election:

| | | |
|------------------------------|-------|--------------------|
| W.M.U. Director | ----- | Mrs. Bob Pratt |
| Assistant W.M.U. Director | ----- | Mrs. Calvin Brower |
| Secretary & Treasurer | ----- | Mrs. Harold Cross |
| Baptist Women Director | ----- | Mrs. T. G. Meachum |
| Baptist Young Women Director | ----- | Mrs. James Fisher |
| Acteens Director | ----- | Mrs. Gladys Canter |
| Mission Friends Director | ----- | Mrs. Fred Carlton |
| Pianist | ----- | Mrs. Lloyd Brown |

In preparation for the new year, an Associational Leadership Conference was held September 27, 1970 at the First Baptist Church, Asheboro. Seventeen churches were represented with a total attendance of 75.

During the year, several churches not having W.M.U. were contacted in an effort to help them to become more aware of the needs of missions organizations.

Associational W.M.U. Council meetings were held quarterly.

In January, the Associational W.M.U. Council voted to set up a separate bank account for Associational W.M.U. needs — funds to be advanced from the allocation for W.M.U. from the Associational budget.

Several ladies from our association attended the State Annual W.M.U. Convention in Fayetteville, March 16-18.

"Share Your Faith" was the theme for the Annual Meeting April 26, 1971. Due to conflicting circumstances, the location was changed from the Glenola Church to the Balfour Church.

Moments of meditation were led by Mrs. Calvin Brower.

Two amendments were made to the By-Laws:

1. ARTICLE V, Section 1

- a. W.M.U. officers were changed to correspond with current terms.
- b. Terms of officers (of W.M.U. officers) shall begin at the close of the Annual Session at which they are elected.

2. ARTICLE IX, Sections 2 and 3 deleted.

Rev. R. T. Smith gave the challenge and led the prayer of dedication of the new officers.

The Baptist Men joined the group for the closing message. Dr. Howard J. Ford, Director of Missions, State Baptist Convention, brought a challenging message stressing the great need for "Missions in Action" *Where We Are*.

In closing, special music was presented by Miss Sherree Brooks and Miss Sheila Nelson. Mrs. Frances Moffitt was at the organ.

I want to take this opportunity to thank the members of W.M.U. in the churches of our Association for the privilege of serving as W.M.U. (President) Director. My term of office was approximately four and one-half years. Also to express my appreciation to all the members of the Associational W.M.U. Council, the Associational Council and Executive Board. To Rev. R. T. Smith and Mrs. Doris Craven for their patience and loving kindness, and their most valuable help and encouragement. The prayers and cooperation of everyone is deeply appreciated.

To Mrs. Bob Pratt, the new W.M.U. Director, and members of the newly elected W.M.U. Council, our prayers and cooperation go with you as you lead our Associational W.M.U. in the days ahead.

Respectfully submitted,
Mrs. Carl King

17. The Brotherhood report was presented by Mr. Earl Underwood, President.

Brotherhood Report

Brotherhood is the unit in a Baptist Church that involves men in mission action designed to witness and minister to persons of special need, to support world missions through prayer and giving, and to provide leadership for special projects.

Some of the special projects that the men of Randolph Association took part in were the building of a four unit cottage at Camp CaRAway, raising funds for a swimming pool at Camp CaRAway, the New Start in Life project, the prison relief ministry, and to help operate the booth at the North Carolina State Fair.

Our Brotherhood Commission S.B.C. provides materials to maintain the Brotherhood program and the State Brotherhood Department helps to train leadership in the associations and churches. Leadership training was offered at Camp CaRAway on September 10-11 and Royal Ambassador Counselor Training on October 16. With the addition of the six, seven and eight year old boys we should have a larger enrollment to report this year.

The Brotherhood Leadership Training Retreat on September 10-11 at CaRAway offered special conferences for:

1. Prespective foreign mission study teachers

director, elementary teachers, college tutor, teacher for missionary children, student workers, youth workers, physicians, pharmacist, nurses, medical technicians, physiotherapist, agricultural evangelism, graphic arts coordination, recreation work, public relations worker, business managers, bookkeeper, librarian, secretary, and social workers.

Evangelistic crusades have been conducted in 1970 throughout the countries of Asia before and following meetings of the Baptist World Congress in Tokyo. The presence of many visitors from other parts of the world in Asia during 1970 was of significance. Evangelistic crusades were conducted in the countries of East and Central Africa, with the assistance of a number of speakers from the Southern Baptist Convention, including the chairman of the Executive Committee.

It is recognized that this decade is the major opportunity for further missionary advance. Studies indicate that major growth in the nation's population during this decade will be between the ages of 25 and 35, where a total increase of 11,000,000 in this age bracket is expected. This is the age when people are appointed for missionary service. Shortly after the close of this decade, the number of missionary retirements annually will greatly increase and will continue to rise for a number of years.

Financial reinforcement will be of major importance throughout the decade in order to sustain this growth. Approximately 50 percent of the Southern Baptist Convention Cooperative Program funds are made available annually for foreign missions. This is this basis whereupon sustained advance can be built. The Foreign Mission Board earnestly trusts this percentage of giving can be maintained throughout the years to come.

Respectfully submitted,
Carl Zeigler

21. Hymn No. 455 — "We've A Story To Tell," led by Mr. Larry Freeman, with Mrs. Barbara Winslow at the organ.

22. Solo by Mr. Larry Freeman: "Lonely Road Up Calvary's Way."

23. Speaking to the Missions Reports was Dr. Fred B. Moseley, Assistant Secretary of Home Mission Board, of Atlanta. Dr. Moseley was introduced by F. L. Hughes.

24. Pastor of the host church, Rev. Raleigh Castelloe, advised the messengers that the food was ready and plenty of same.

ADJOURN FOR LUNCH

WEDNESDAY AFTERNOON SESSION

25. Hymn No. 2 — "Love Devine, All Love Excelling," led by Mr. Larry Freeman, with Mrs. Barbara Winslow at the organ.

26. Scripture and prayer by Mr. Ronnie Alexander of Union Grove Baptist Church

27. The following officers were elected for the coming year:

MODERATOR: Rev. R. L. Hughes
 VICE MODERATOR Carl King
 CLERK: Fred Lane
 TREASURER: James Lane

28. Nominating Committee report was presented by Mr. Carl King. This report was approved as presented and will be found in the directory section of the minutes.

29. A Short talk by Mr. Mike Branson, student at Gardner-Webb College.

30. Rev. J. B. Gibson presented the Sunday School report at this time.

Sunday School Report

In September, 1970 some three hundred individuals from the Baptist Churches in Randolph Association met in the Oakhurst Baptist Church. The occasion was Sunday School Action Night. Perhaps, this was the outstanding event of the year. The purpose of the meeting was to consider the new year, 1970-71 and to take a look at the resources to help in getting the job done. Excellent work was done in the conferences which were led by your associational officers.

Two other meetings with a Sunday School emphasis were held during the year. The first was in December and met in the Balfour Baptist Church and the other was held in the Central Falls Church in May. The spirit of these meetings was good and, from the reports from the various directors, it would appear that 1970-71 was a good year in Randolph Association.

Surely, the thing on most of the minds of our people was the change in organization and materials used. Perhaps, 1970-71 will be remembered as the year in which we broke out of the rut we had been in for so long. Hopefully, this has been true all over North Carolina and the Southern Baptist Convention.

People are hungering for a greater knowledge of the Bible and the light it can give them for their own particular problems and burdens. Let us give ourselves just as completely as we can to sharing God's word with those around us during the coming year.

Respectfully submitted,
James B. Gibson

31. The Cooperative Program report was presented by Thurman Williams.

Cooperative Program Report

"Committed to World Missions" is the Cooperative Program theme for the year 1971-72. It is our hope that this theme will be taken seriously by all of our churches. God has blessed Southern Baptists since the inauguration of the Cooperative Program. Surely our churches will give and/or increase their giving through this channel that blesses the world.

To help the churches of our Association grow in support of Cooperative Program work we recommend:

- A. That our churches keep in mind the inflationary trends of our economy and plan to increase their contributions to missions.
- B. That every church observe Cooperative Program Month, October each year.
- C. That every church observe Cooperative Program Day on the Third Sunday in April.

- D. That contributions through the Cooperative Program be on a percentage basis rather than a fixed dollar figure. To implement a program of percentage increase to world missions through the Cooperative Program we suggest:
1. For churches giving under 20%, advance 2% each year up to 20%.
 2. For churches giving 20% but under 30% level, advance 1% each year to 30%.
 3. For churches reaching the 30% level, advance 1/2% each year until the objective set by the church is reached.

The Stewardship Commission, SBC, now offers to the churches three programs to help in the matter of planning, promoting and pledging church budgets. All the materials referred to here may be secured from SBC Stewardship Services, 127 Ninth Avenue, North; Nashville, Tennessee 37203. They are:

- A. The Southern Baptist Program of Christian Stewardship. The theme for this year is "Committed to Give . . . As God Has Given." A program designed for churches of any size.
- B. Stewardship Activity Guides, from which a church can build any type program it desires.
- C. Family Stewardship materials which are designed to teach sound money management principles to the Christian family by acknowledging the Lordship of Christ.

In addition to these materials, which have become standard items, graded materials have been produced to help our churches begin teaching the principles of stewardship development during the early years. "My Money Helps" and "Money and Me" are for children six through eleven. "Youth in Stewardship (called YIS) is a five session youth fellowship emphasis.

Of increasing importance to the churches in our association will be the stewardship chairman. Every church should receive a copy of *The Church Stewardship Chairman's Planning Guide*.

We recommend:

- A. That a stewardship chairman be elected in every church in our association.
- B. That we have a goal of 46 churches using stewardship development materials produced by the Stewardship Commission to plan, and promote their budgets.
- C. That we continue to emphasize the tithe as the minimum standard of giving and that we set a goal of 40% tithers in our association.

Respectfully submitted,
Thurman Williams

32. Presentation of the Music Report was by Mr. Larry Freeman.

Music Report

Of the many programs that can be found in the church today, music is rather unique. Many of the various other activities such as: the Bible teaching program, church training program, missionary activities, and others were started by lay movements outside the church. These programs were incorporated into the church. Music has always been within the church as a dynamic force in religion. Music gives meaning to worship.

Our music emphasis during the month of June was "The Scale of Christian Experience". An excellent choir made of church members of several churches in the Randolph Baptist Association made the program one of joy and inspiration.

Please do not hesitate to contact your music director with regard to your church's needs or problems in music. He will be glad to meet with your representatives anytime you may have need of his services.

Respectfully submitted,
Larry W. Freeman

33. Mr. Otus Thomas made the presentation of the report on Christian Higher Education.

34. Speaking to the report on Christian Higher Education was Dr. John T. Bunn of Campbell College.

Christian Education Report

The year of 1970 was a year of transition for the Education Commission of the Southern Baptist Convention. In June of 1970 a special self-study committee of the Education Commission made its final report. This two-year study resulted in a careful examination of all existing programs and the recommendation of new services and emphases for the Commission.

The self-study committee concluded that the basis for the continuation of our Baptist witness in higher education includes a determination on the part of the individual institutions to live within stated Christian purposes, the willingness of these institutions to serve the denomination in vital relationships and the willingness (even while limiting enrollments and expansion of facilities) to strive constantly for academic excellence.

In addition to the traditional services which our Baptist colleges render to our denomination and to our people, these institutions have given strong moral leadership in an age of moral decline. They have refused to bow to the popular dictum that a college has no responsibility for student conduct. They have refused to allow radical minorities, either in the student body or the faculty, to take over or disrupt the orderly process of instruction. While championing academic freedom and the right to peaceful assembly, Baptist colleges have not allowed the substitution of violence for the power of persuasion nor permitted anarchy in the guise of dissent or civil disobedience. To this extent they have served not only their denomination but they have served all of higher education in this country.

The Baptist Education Study Task identified as a major problem that of denominational relations and communications. How do the Baptist colleges in North Carolina rate in these areas? An editorial in the *Biblical Recorder* for June 19, 1971, entitled *Our Seven Baptist Colleges 'Not in the Doldrums'*, stated the following feelings of North Carolina Baptists. "On one Sunday a year — Father's Day — our seven Baptist colleges in North Carolina are given special emphasis and recognition in the local church. Admittedly, an offering is a big part of the day, but the observance goes beyond financial consideration. This day seeks to remind our Baptist people that these seven institutions are an important and vital part of Baptist life. Take a close look at the business and professional leadership in your area — doctors, lawyers, judges, teachers, businessmen, civic leaders and Christian homemakers.

If yours is a typical community, you'll find alumni of these seven schools taking prominent roles in all that goes on. These seven schools are under mature leadership. The administrations work closely with the Department of Christian Higher Education and the Council on Christian Education. Never did these institutions need Baptist assistance any more than they do today and never did their Baptist constituency need their graduates as much. It's a two-way street, with each needing the other."

Church-related colleges are the last live option for post-high school in a Christian atmosphere. At these colleges Christian codes of conduct are expected and these expectations are stated in writing.

Some of the highlights of the Program Report of the Education Commission are as follows:

Representing major program accomplishments for 1970 are: completed two-year long range self-study, worked with Southern Association of Colleges and Schools in resolving problems of accreditation related to Baptist policy, made careful study of the future needs of teacher recruitment and placement so that the recruiting of teachers outside Baptist colleges would no longer be necessary, and reestablished liaison with the Sunday School Board for promoting the Conventionwide annual emphasis on Baptist College, Seminary, and School Day.

Included as major goals for 1972 are: establishing better communication between Southern Baptist Convention personnel and the faculties on Baptist college campuses, working toward developing a program of adult education on Baptist college campuses, to encourage all Baptist colleges to develop a field work program which will give college students an opportunity to practice their church-related vocation while still in college, publication of an updated pamphlet which describes the services of the Baptist registry, and developing a new program of Christian Vocational Guidance Centers on Baptist college campuses for the purpose of assisting students to know themselves better and to identify those occupations for which they have the greatest talents.

During the past year state conventions and the Southern Baptist Convention gifts to Southern Baptist schools totaled \$21,722,922; donations, gifts, and grants amounted to \$15,047,553. The total assets of the schools reached an all-time high of \$723,601,269. The endowment funds increased by \$12,284,512, making the endowment total for the schools \$211,958,139.

The schools had a total enrollment for the year 108,606, with a total of 15,900 graduates. Volunteers for church-related vocations totaled 14,219 for the year.

Although the major emphasis in this report is pointed at Christian Higher Education, it is not intended that we should forget the basic Christian Education principles that are to be provided by the home and our local churches.

In spite of the fact that the home seems to be declining in its function as a center of family worship and Christian education, it is still tremendously effective in the development of idealism, moral and spiritual traits, and values in its members. The roles that young people take in religious matters develop largely out of their family and home-church experience. Many of our churches are striving to develop an educational program for all interest and age groups in the church. Activities are being developed which appeal to families as a family-group.

May we remember that each of us in one way or another has a role to play in the Christian education of all others. In our prayers, let us pray for God's help in leading us to use our talents and lives in the best way possible for the benefit of all people.

Respectfully submitted,
Otus C. Thomas

35. Presentation of the Church Training Report was by Rev. Raleigh Castelleo.

36. Rev. Sam O'Neil, Secretary of Church Training for North Carolina, spoke to the report.

Church Training Report

During the past year the Church Training Program has become more stable than it has been for several years. The sixties were filled with many changes that came so rapidly that many of our churches could not keep up. There were changes in literature, organization, and philosophy of training. Many of us have not caught up with these changes yet. Now it looks like we will be able to do so because this long period of rapid change in Church Training appears to be behind us for a while. We encourage all our churches to study the Church Training Program and use it to their best advantage.

On the Associational Church Training scene, the past year was generally a good one, but some areas of weakness came to our attention. The greatest weakness is that over half of our churches report no training. We think that many of these churches have training without an organized Training Program. In the new concept of Church Training this unorganized training is recognized as Church Training. We hope these churches will report their training to us.

Another thing we noticed was that the churches do not call on their Associational Church Training personnel for assistance. We think we can help you improve your training. Call on us.

During the past year the Associational Church Training Program sponsored several association-wide programs. On November 23, 1970, "M" Night was at First Baptist Church, Asheboro. Rev. L. D. Holt, pastor of Emmanuel Baptist Church, Raleigh, was the speaker. Attendance was very poor with only 67 people from 17 churches present. The most obvious reason for the poor attendance was the lack of promotion and publicity by the Associational Church Training Director. We pray that we learned from the experience.

On January 25, 1971, a Training Conference was conducted at Forest Park. There was a conference in Church Member Training conducted by Mr. Dan Page, Superintendent of Missions in the Flat River Association; a conference in New Member Orientation conducted by Mr. Maurice Cooper, Associate in the Church Training Department of the Baptist State Convention; and a conference in Church Leader Training conducted by Mr. Sam O'Neal, Secretary of Church Training of the Baptist State Convention. This was a very successful meeting. We had asked each church to send three people, and there was a total attendance of 62 from 15 churches.

On March 29, 1971, the Church Training Tournaments were held at First Baptist, Asheboro. The only tournament promoted during the past year was the Scripture Exploring Drill for children. We had sixteen children participating in the Scripture Exploring Drill. They were: Jeffrey Beane from Greystone, Rhonda Cagle, Joy Cole, Barbara Lowe, Kay Luther, Kim Luther, and Cheryl Young from Oakhurst; Freddie Graham, Kent Jackson, Maria Miller, Lynn Painter, Stephen Parker, Craig Richardson, Mike Teem, Cheryl Thurston, and Duke Thurston from Asheboro, First. Fifteen of the sixteen were declared winners. Fifty-three people from seven churches were present for the tournament.

On August 23, 1971, Associational Youth Night was held at Camp CaRAway. Super was served at 6:00 o'clock followed by a program at the Lakeside Chapel. Special Agent David Marshall of the State Bureau of Investigation spoke to the youth concerning the drug abuse situation in our immediate area. Following his presentation the motion picture, "The Youth Drug Scene" was shown. Mr. Marshall evaluated the movie as being the best objective film presentation of the drug problem which he had seen. There were 248 people at Youth Night. Most of them were Junior High and Senior High students.

We are looking forward to a good year in Church Training this year. On the Associational level we will have several opportunities to study and learn how to make our Church Training Programs more vital forces in our churches. We ask your prayerful support in this year.

Respectfully submitted,
Raleigh Castelloe

37. Motion to adpourn — Closing prayer by Carl King.

Thursday Morning Session
Central Falls
October 21, 1971

38. Our Thursday morning session was called to order at 9:30 A. M. by our Moderator, Rev. Ralph Holcomb.

39. Hymn No. 120 — "Blessed Assurance," led by Mr. Carl King, with Mrs. Barbara Winslow at the piano.

40. Scripture and prayer was led by Rev. John Wheelles, pastor at Hughes Grove.

41. The Field Worker for the Association, Rev. R. T. Smith, gave his report at this time.

Report of Field Workers

| | | |
|-------------------------------------|-----------------|--------|
| Days on field | ----- | 337 |
| Days away | ----- | 28 |
| Sermons preached | ----- | 63 |
| Other talks | ----- | 4 |
| Taught Sunday School | ----- | 5 |
| Conducted prayer meetings | ----- | 19 |
| Study courses taught | ----- | 2 |
| Conferences with individuals | ----- | 1,173 |
| Conferences with groups | ----- | 134 |
| Conferences with committees | ----- | 14 |
| State meetings attended | ----- | 3 |
| Churches visited in the association | ----- | 30 |
| Pieces of mail sent out | ----- more than | 8,664 |
| Miles traveled | ----- | 21,822 |
| Preached in revivals | ----- | 1 |
| Professions of faith | ----- | 2 |
| Additions to church | ----- | 4 |

Respectfully submitted,
R. T. Smith

42. Hymn No. 234 — "Beneath The Cross of Jesus," led by Mr. Carl King, with Mrs. Barbara Winslow at the piano.
43. Solo by Mr. Carl King — "The Wonder Of It All."
44. Scripture and prayer by Rev. Mahlor Furr. Doctrinal Sermon by Rev. F. A. Lunsford, Pastor of Union Grove.
- "THE LORDSHIP OF CHRIST"
45. A report on Christian Literature was given by Mr. Carl King.

Literature Report

In response to my obligation of giving the Christian Literature Report to the annual meeting of our association, I would like to give my own evaluation of our own Christian Literature.

First, I believe that our literature is the very best obtainable through our Baptist Book Store and through the Broadman Publishing Company and would urge each and everyone to especially give consideration to one or more of these publications:

HOME LIFE — The *HOME LIFE* magazine is one of the best publications for daily devotions and a good home news publication that gives some of the best stories and informational writings that can be found anywhere. I strongly urge the churches of our association to check with the members of their church and see how many families would like to have the *Home Life* magazine sent to their homes. Make a list of those who desire the *Home Life* and order it with your other literature.

BIBLICAL RECORDER — The *Biblical Recorder* is one of the best informational organs of any denominational group in our state. Marse Grant, our editor, is to be complimented highly on taking such strong and Christian stand on vital issues effecting North Carolinians. As most of you know, this magazine can be secured on a church budget plan for \$2.00 per year per copy.

CHARITY AND CHILDREN — This paper is a good publication but not as broad and newsworthy as some of our other publications, but is a good news outlet publication by our children from the N. C. Baptist Homes.

THE COMMISSION — *The Commission* is our foreign mission magazine and is very helpful to give us world vision and helps us become aware of what is happening on our foreign mission fields and to our foreign missionaries.

HOME MISSION — The *Home Mission* magazine is another important publication by our Home Mission Board and is a well edited and published magazine giving us a broad view and information from our Home Mission Board.

SUNDAY SCHOOL LITERATURE — Of course our Sunday School Literature is not only being used by our Southern Baptist people but by several other denominations as well and is considered to be the soundest and best prepared literature available for churches desiring good literature for their Sunday Schools.

We should consider ourselves very fortunate to have the above and many other sources of Christian literature and I highly recommend that

we try to keep abreast and aware of things that are happening in the world that we might be the very best informed Christians that we can possibly be, because I believe that within two or three decades we are going to need to be well informed spiritually or we may lose this great religious freedom that we have in this Randolph Baptist Association.

Respectfully submitted,
 Carl L. King

46. The Annuity Report was presented at this time by Carl Garner.

Annuity Report

As prices of goods increased and the value of the dollar increased in 1970, a large number of Baptist pastors, church staff members, and denominational employees moved to provide greater protection in the years ahead for themselves and their families. Most of these persons did so by increasing their Southern Baptist Protection Program participation to at least ten per cent of total salary.

While members upgraded, the Annuity Board was introducing Good Experience Credit. This gives Protection Program members benefits over and above the amounts set forth in their certificates.

Increased benefits are made possible by interest earnings in excess of the Protection Program's initial actuarial assumptions. Since January 1, 1970, active members received Good Experience Credit in the form of increases in retirement credits accrued.

Retired persons also get Good Experience Credit. Persons receiving benefits other than education, variable or fixed period of getting four per cent more income each month.

Each retired person, or widow, also received a "13th Check" for 1970 amounting to 8.33 per cent of his annual benefit. It was the fifth consecutive year the "13th Check" had been given and amounted to \$424,594.

In its 53 year history, the Annuity Board has paid benefits amounting to \$82.1 million; \$8.4 million was paid in benefits during 1970.

The Randolph Association had 21 churches participating in the Protection Program with 26 members enrolled. *The Association* is also enrolled with one staff member.

HIGHLIGHTS FOR 1970

| | Present Enrollment | Net Gain from 1969 |
|--|-----------------------|-----------------------|
| Members participating in Protection Plan A | 24,526 | 1,307 |
| Churches providing protection for pastors | 20,669 | 2,588 |
| Members enrolled in <i>Church</i> Group Insurance Plan | 7,109 | 5,979 |
| Members enrolled in <i>Agency</i> Group Insurance Plan | 8,234 | 6,006 |
| Relief Payments made during year — \$ | 162,507 | |
| Total benefits paid during year — \$ | 8,404,306 | |

Respectfully submitted,
 Carl K. Garner

47. Presentation of the Children's Home Report was made by T. W. Nelson.

Baptist Children's Homes Report

Let a graduating senior express what it is like to live in one of our Baptist Children's Homes: "I really do not know how to write about a place which has been so fine, and which has given me the opportunity to worship, work, and learn; not only where we stand in moments of comfort and convenience, but where we stand in moments of challenge and moments of controversy. After all these years, one finally learns that certain values and practices are good and sound and help children to feel secure and happy."

This statement could be made by almost any senior regarding his home and community, for a child in the care of the Baptist Children's Homes has basically the same attitudes and values as other children. He differs from other children only in the tragic experiences which have made it necessary for him to live away from his family. For these children, it is our mission to provide loving care in the spirit of Jesus Christ. We want to work in harmony with what we sense God is doing in the life of each child, enabling the child to tap his own inner resources and grow to responsible adulthood.

The pursuit of this basic goal has led the Children's Homes to develop a variety of services, all family centered. Some families need resident care for their children and for these we have group homes and foster homes. Some families can remain together with outside help and for these we have family services in the form of counseling or financial assistance. For the graduate in our care, we assist in higher education. For churches involved in day care, we provide a demonstration program and consultation service. We welcome individual inquiries regarding any of these services as the need may arise.

Staff members and children of the Baptist Children's Homes are grateful for the harmonious relationship we have shared with North Carolina Baptists. The churches have expressed their confidence and support through increased Cooperative Program gifts and a 1970 Thanksgiving Offering of \$380,000. Individuals continue to give generously and to become involved in our varied ministries. We accept this support as an investment in all that we are doing and we pledge ourselves to translate your investment into quality Christian child care.

Respectfully submitted,
T. W. Nelson

48. Report on Evangelism by Rev. M. A. Pegram of Franklinville.

Evangelism Report

The Associational Evangelism Conference was held on March 1st at the Oakhurst Church. The speaker for the Conference was the Reverend Fritz D. Hemphill of Boone, N. C. Attendance for the meeting exceeded that of the previous year.

Attention is called to two Statewide Evangelism meetings. The 26th Statewide Conference on Evangelism will be February 7-9, 1972 at the Cumberland County Memorial Auditorium in Fayetteville. The next Statewide Evangelism Night will be on Friday evening, August 18, 1972 at the Greensboro Coliseum.

Our State Office of Evangelism reports: "There is a tremendous interest in North Carolina and the entire Southern Baptist Convention in the new WIN materials on lay witnessing and the one week Lay Evangelism Schools. Over twenty-five Associations have already started specific planning toward a one week Lay Evangelism School in their area. The first Lay Evangelism School sponsored by the Division of Evangelism will be November 1-7 in the Mecklenburg Association. Other one week dates have already been confirmed in several Associations. Thousands of laymen and youth will respond if they are properly challenged and trained."

We should be extremely grateful to God for the interest of our youth in Evangelism as was evident during the Youth Evangelism Night this past February 2nd when almost 20,000 youth and adults overflowed the Greensboro Coliseum and War Memorial Auditorium. 1,519 decisions were made by these youth. It is reported that many of our youth in churches across our state are involved in witnessing for Christ in many ways.

Let us pray earnestly for the non-Christians in our Association, in North Carolina, our Nation and around the World. Under the guidance of the Holy Spirit, let us dedicate ourselves to the task of leading many people to commit their lives to Jesus Christ.

A study is being made to determine the advisability of a Central Associational Revival in 1974. The Associational Evangelism Chairman would like to hear from each pastor and church in the Association. A report of the study will be made shortly to our Associational Executive Committee. Let us also give much prayer to this important matter.

Respectfully submitted,
M. A. Pegram

49. The Baptist Hospital Report was presented by John Jackson.

Baptist Hospital Report

Our Baptist Hospital admitted 17,557 person in 1970 totalling 150,174 days of care. 51,563 visits to the outpatient clinics included 17,241 to the Emergency Room. Of the above, 90% were referral patients, referred by local physicians because they needed specialized medical care our Hospital is staffed and equipped to provide.

We are pleased to know that the hospital's financial situation is now viewed with cautious optimism. The financial problems are not all solved but reports for the first three months of 1971 are encouraging. The Mother's Day Offering is not all in, but there is assurance that it will be the largest ever. Every dollar of this offering will go to provide free service and care to needy patients.

The Z. Smith Reynolds Foundation Tower will be ready for occupancy in late 1972. The new Coronary Care Unit is nearing completion and will be in use soon. The Medical Center Development Campaign is progressing good. Pledges by the Baptist Hospital Employees for this cause amount to \$177,182. This is wonderful evidence of faith in the hospital program, and a demonstration of love and commitment. Contributions are invited for memorial purposes. There is no more appropriate place to pay honor to a loved one, or to the memory of a friend. Pledges are invited. Family, community, or organization contributions may be combined for project or memorial purposes.

Brother W. Perry Crouch has described our hospital uniquely, as a referral center second to none and one with a definite Christian atmosphere. He also believes that the future of the hospital lies in her ability to offer superior medical service not available in local hospitals. We all believe that Baptist people of North Carolina will make every effort to see that this kind of hospital is supported. We should be modestly proud to be able to give that support to provide needed medical care to those who need the facilities of our great medical research center.

One out of every ten in North Carolina are admitted to hospitals each year. Many will require the very advanced and specialized care which our Baptist Hospital provides. Baptist Hospital offers a ministry of healing in Christ's Name to all who need it. It seeks to fulfill the same purpose in North Carolina that a Baptist Hospital operated by our Foreign Mission Board seeks to fulfill in Korea or Nigeria. It ought to be supported by missionary-minded Baptists with the same enthusiasm and for the same reason we support every other phase of our denomination's World Mission Program. This is missions too. As we visit and minister to the needy, sick, and suffering, we hear Jesus say, "Ye did it unto Me."

Respectfully submitted,
John L. Jackson

50. The report on the Baptist Homes for Aging was given by Troy Jones.

51. Speaking to this report was Mr. William Poole, superintendent of the Homes.

Baptist Homes For The Aging Report

Our North Carolina Baptist Homes for the Aging celebrated their 20th anniversary in March of this year. During these two decades, the story of our Homes has been one of faith and the abundant blessings of God upon this special ministry to older people. God has brought us from one Home, and one resident in 1951, to five Homes and a Nursing Care Unit, with total accommodations for 160 residents and 76 patients. Two of these Homes, Resthawn and the Hayes Home, and the Nursing Care Unit are located in Winston-Salem, and the other three Homes are located in Albemarle, Hamilton, and Yanceyville. In these homes, our residents are loved, and we feel that there is no greater security that they could have and no better care that they could receive.

The past year has been one of the best ever, and we are rejoicing in the blessings that have come from God through our Baptist people. Support for the Homes from the churches, through the Cooperative Program and the Special Day Offering, has been most encouraging. For the last three years, the Homes have had an alarming deficit and have operated in the red. We have not yet reached the point of operating in the black, but let us say, with hopeful optimism, that we are approaching this time. The deepened concern of our Baptist people and the increase in gifts have been strong contributing factors to the success of the past year.

At least 80% of the people who live in our Baptist Homes are financially needy persons and benefit directly from the love gifts of North Carolina Baptists. They simply could not be maintained, and the Homes could not be operated without the Special Offering, designated gifts from the churches, and the Cooperative Program. We would urge our Baptist people, therefore, to remember how dependent these dear old people are on them and would challenge them to give

more liberally than ever and to see that their gifts are a real-line in the on-going of this ministry.

Of unusual interest during the past year has been the construction of the new addition to the Nursing care Unit in Winston-Salem. It was anticipated that this new facility would be ready for occupancy by September 1. It will make available 20 additional beds and bring the total capacity of the Nursing Care Unit to 76. This addition was made possible by the generous challenge gift of \$80,000.00 from Judge and Mrs. William York of Greensboro. The trustees accepted the challenge and raised an additional \$80,000.00.

Let us pray for the Baptist Homes for the Aging and remember that any ministry to an older person in the name of Christ is a direct ministry to Him.

Respectfully submitted,
Troy E. Jones

52. Mr. Brookshire of the Children's Home in Thomasville brought greeting and words of thanks from the home.

53. Speaking for the Baptist Hospital was Mr. Tom McGee.

54. Rev. Mangum, pastor of the host church, welcomed the messengers and gave instructions as to the meal.

55. Under New Churches, West Asheboro Baptist was taken under watchcare until our next annual meeting, but must present to Committee satisfactory documentation of Doctrinal beliefs.

57. Words of appreciation to the two host churches was given by Mrs. Carl King.

Appreciation

We give Thanks to God for blessings untold, during the Year, and permitting us to assemble together for another associational meeting.

We express our appreciation to the Officers and Committees for the Service They have rendered on behalf of our Association. We are grateful also for all who have had a part in planning for this Session. For each one taking part on the program; those who led Special music, and each message of Challenge and inspiration.

To both Macedonia and Central Falls Churches, We express our sincere appreciation for the gracious hospitality they have extended to Us. For the Warm Welcome, The *Good Food*, and Wonderful Christian Fellowship.

Above all let Us be Thankful for the Guidance of the Holy Spirit both to us as Individuals and as an Association.

Respectfully submitted,
Mrs. Carl King, Chm.
Mrs. Austol Youmans

58. The Place and Preachers report was given by Rev. Neathery.

Committee on Place and Preacher

October 18, 19, 1972

Wednesday, October 18 — First Baptist Church, Randleman

Thursday, October 19 — Shady Grove Baptist Church

Annual Sermon: Rev. Troy Jones; Alternate: Rev. Harvey Rumpfelt.

Doctrinal Sermon: Rev. B. G. Pratt; Alternate: Rev. Austol Youmans

Concerning the date of the meetings, it has been suggested that the constitution and by-laws be changed or amended so as to allow of the sessions to be held at night. Since this has to be acted on by the association, we are assuming at this time that no such change will be made in the schedule of the meetings as now provided in the associational constitution until after the 1972 meetings. If such change should occur, this committee will meet immediately to alter the dates accordingly.

Respectfully submitted,
H. C. Neathery

59. Presentation of the report on Memorials at this time.

Memorials

Asbury

Mrs. Lillie Auman
Mrs. Verna Cooper
Mr. William E. Hunt

Asheboro, First

Mrs. G. H. King
Mr. Kenneth Dodson
Mr. William E. Poole
Mrs. Rena Hussey
Dr. J. A. McIntosh
Mr. Gordon B. Hall
Mr. Jerry D. Clifton
Mr. Fred Scarboro, Jr.
Mrs. M. A. McAulay
Mr. B. D. Tew
Mr. Elsie R. Cagle

Balfour

Mrs. E. A. McNeil
Mr. Floyd McMasters

Beulah

Mr. Oscar Caviness
Mr. Lonnie Purvis

Calvary

Mr. C. L. Williamson

Central Falls

Mr. Frank Jarrell

Cool Springs

Mrs. Percy Cox

Deep River

Mr. Hubert Ferree, Deacon
Mr. Willie Moffitt, Deacon
Rev. Clyde Moffitt
Mr. William T. Herrin

Franklinville

Mrs. Henry Curtis
Mr. Alton Burke
Mrs. Sam Jones
Mr. James Long
Mrs. Clarence Parks
Mr. Garrett Gatlin, Deacon

Liberty, First

Roy A. Deaton, Deacon
Mr. Jack Justice
Mrs. Zura Wilson

Macedonia

Mr. Boyce Wolfe
Mr. Vance Breedlove, Deacon
Mrs. Kizzie O'Briant
Mrs. Sarah Clapp

Maple Springs

Mrs. Elizabeth Boone

Mt. Lebanon

Mrs. Crissie Strider

Mt. Pleasant

Mr. Frank Bowman

Oakhurst

Mr. Alton Burkheart
 Mrs. Flora Harvell
 Mrs. Mary Redding
 Mr. Perry Arrington

Panther Creek

Mr. E. L. McKinney

Ramseur, First

Mr. D. E. Highfill
 Miss Mamie Caviness

Randleman, First

Mr. James Goley

Riverside

Mrs. Lura Owens

Russell's Grove

Dennis Chrisco

Sandy Creek

Mrs. Martha Williams Fields

Shady Grove

Mr. Clarence Williams

Union Grove

Mrs. Linda Freeman
 Mr. Clarence Reeder
 Miss Effie Dillon
 Mrs. Essie Jordan

Westfield

Mr. C. T. Hughes
 Mr. Beecher Kennedy

60. Hymn No. 161 — "Amazing Grace," led by Mr. Carl King with Mrs. Barbara Winslow at the piano.

61. Special Message at this time by Rev. John Woody, Past Moderator.

62. Motion to adjourn.

Closing prayer by Rev. R. L. Hughes

| TABLE A. CHURCH MEMBERSHIP AND OTHER INFORMATION | | YEAR ENDING SEPT. 30, 1971 | | 1 | | 2 | | 3 | | 4 | | 5 | | 6 | | 7 | | 8 | | 9 | | 10 | | 11 | | 16 | | 17 | | 18 | | | | | | | | | | | | | |
|--|-----|--|----------|----------------------------|---|--------------------------------|---|---------------------------------|---|--|---|--|---|--|---|--------------------------|---|-----------------------------|---|-----------------------------|---|---|---|---|---|---|---|--|---|---|---|--------|---------|--------|-----|-----|-----|-----|--------|---------|---------|---------|--------|
| Association | | (Month & Day) | | Year organized as a church | | Services held twice on Sunday? | | If no. services held on Sunday? | | Total Baptisms | | Other additions (by letter, statement, etc.) | | Members lost (by letter, death, statement, etc.) | | Present resident members | | Present nonresident members | | Grand total present members | | No. members received from non-Baptist denominations | | No. members lost to non-Baptist denominations | | Value of pastor's home if owned by the church | | Value of Church property incl. pastor's home | | Total church debt at end of fiscal year | | | | | | | | | | | | | |
| State | | City | | County | | Y | | M | | E | | M | | E | | M | | E | | M | | E | | M | | E | | M | | E | | | | | | | | | | | | | |
| P. O., Box, 1005 | | Ashboro | | N. C. | | 26 | | 27203 | | PASTORS & ADDRESSES (INCLUDE ZIP CODE) | | | | | | | | | | | | | | | | | | | | | | | | | | | | | | | | | |
| Maple Springs | 83 | Darrell Cox, P. O. Box 118, Seagrave 27341 | Randolph | 1888 | 1 | X | X | X | X | X | X | X | X | X | X | X | X | X | X | X | X | X | X | X | X | X | X | X | X | X | X | 0 | 10,000 | 40,000 | 0 | | | | | | | | |
| Mt. Lebanon | 81 | D. C. Sullivan, Rt. 1, Denton 27239 | Randolph | 1890 | 1 | X | X | X | X | X | X | X | X | X | X | X | X | X | X | X | X | X | X | X | X | X | X | X | X | X | X | 0 | 0 | 0 | 0 | | | | | | | | |
| Mt. Pleasant | 94 | W. A. Gillet, Route 1, Liberty 27298 | Randolph | 1872 | 1 | X | X | X | X | X | X | X | X | X | X | X | X | X | X | X | X | X | X | X | X | X | X | X | X | X | X | 0 | 22,000 | 82,000 | 0 | | | | | | | | |
| Oakhurst | 26 | R. L. Hughes, 2311 S. Fayetteville, Asheboro 27203 | Randolph | 1945 | 7 | X | X | X | X | X | X | X | X | X | X | X | X | X | X | X | X | X | X | X | X | X | X | X | X | X | 0 | 10,500 | 100,913 | 0 | | | | | | | | | |
| Oakwood Park | 19 | Carl Zeigler, Rt. 7, Box 222, Asheboro 27203 | Randolph | 1952 | 7 | X | X | X | X | X | X | X | X | X | X | X | X | X | X | X | X | X | X | X | X | X | X | X | X | X | 0 | 0 | 30,000 | 4,237 | | | | | | | | | |
| Panther Creek | 29 | John Beane, Rt. 4, Asheboro 27203 | Randolph | 1942 | 1 | X | X | X | X | X | X | X | X | X | X | X | X | X | X | X | X | X | X | X | X | X | X | X | X | X | 0 | 10,000 | 10,000 | 0 | | | | | | | | | |
| Ramseur, First | 121 | Justus McKeel, Box 255, Ramseur 27316 | Randolph | 1850 | 3 | X | X | X | X | X | X | X | X | X | X | X | X | X | X | X | X | X | X | X | X | X | X | X | X | X | 0 | 3 | 11 | 307 | 85 | 392 | 1 | 2 | 18,000 | 133,000 | 0 | | |
| Randleman, First | 90 | B. G. Pratt, 201 Forrest Dr., Randleman 27317 | Randolph | 1879 | 4 | X | X | X | X | X | X | X | X | X | X | X | X | X | X | X | X | X | X | X | X | X | X | X | X | X | X | 0 | 4 | 16 | 304 | 102 | 406 | 0 | 2 | 25,000 | 300,000 | 78,000 | |
| Red Cross | 22 | W. F. Hackett, Rt. 2, Climax 27233 | Randolph | 1949 | 1 | X | X | X | X | X | X | X | X | X | X | X | X | X | X | X | X | X | X | X | X | X | X | X | X | X | X | 0 | 1 | 145 | 40 | 185 | 0 | 0 | 11,000 | 60,000 | 30,000 | | |
| Richland | 20 | R. W. McPherson, 306 Cherokee, Asheboro 27203 | Randolph | 1951 | 1 | X | X | X | X | X | X | X | X | X | X | X | X | X | X | X | X | X | X | X | X | X | X | X | X | X | X | 0 | 4 | 16 | 120 | 7 | 127 | 0 | 2 | 0 | 40,000 | 0 | |
| Riverside | 61 | W. E. Eaton, Route 5, Asheboro 27203 | Randolph | 1910 | 1 | X | X | X | X | X | X | X | X | X | X | X | X | X | X | X | X | X | X | X | X | X | X | X | X | X | X | 0 | 0 | 2 | 108 | 34 | 142 | 0 | 0 | 0 | 20,000 | 0 | |
| Russell's Grove | 26 | | Randolph | 1935 | 2 | X | X | X | X | X | X | X | X | X | X | X | X | X | X | X | X | X | X | X | X | X | X | X | X | X | X | 0 | 10 | 5 | 9 | 222 | 4 | 222 | 0 | 0 | 15,000 | 73,000 | 0 |
| Sandy Creek | 66 | Carl Garner, Route 1, Liberty 27298 | Randolph | 1905 | 1 | X | X | X | X | X | X | X | X | X | X | X | X | X | X | X | X | X | X | X | X | X | X | X | X | X | X | 0 | 5 | 2 | 115 | 12 | 127 | 0 | 0 | 30,000 | 50,000 | 10,000 | |
| Seagrave, First | 5 | Ronnie Kiser, Rt. 4, Box 312, Asheboro 27203 | Randolph | 1966 | 3 | X | X | X | X | X | X | X | X | X | X | X | X | X | X | X | X | X | X | X | X | X | X | X | X | X | X | 0 | 2 | 5 | 7 | 81 | 0 | 81 | 5 | 2 | 12,500 | 120,000 | 76,700 |
| Shady Grove | 216 | C. W. Pierce, Rt. 1, Staley 27355 | Randolph | 1755 | 1 | X | X | X | X | X | X | X | X | X | X | X | X | X | X | X | X | X | X | X | X | X | X | X | X | X | X | 0 | 15 | 2 | 4 | 119 | 29 | 148 | 0 | 2 | 17,000 | 150,000 | 89,782 |
| Sophia | 12 | R. L. Barnes | Randolph | 1959 | 3 | X | X | X | X | X | X | X | X | X | X | X | X | X | X | X | X | X | X | X | X | X | X | X | X | X | X | 0 | 0 | 9 | 0 | 60 | 0 | 60 | 0 | 0 | 17,000 | 0 | |
| Union Grove | 86 | F. A. Lunsford, Rt. 1, Box 59, Seagrave 27341 | Randolph | 1885 | 1 | X | X | X | X | X | X | X | X | X | X | X | X | X | X | X | X | X | X | X | X | X | X | X | X | X | X | 0 | 14 | 4 | 6 | 545 | 66 | 611 | 0 | 1 | 30,000 | 370,000 | 53,564 |
| Westfield | 55 | George McDaniels, 605 Hickory Lane, High Point | Randolph | 1916 | 1 | X | X | X | X | X | X | X | X | X | X | X | X | X | X | X | X | X | X | X | X | X | X | X | X | X | X | 0 | 7 | 7 | 2 | 40 | 25 | 65 | 0 | 0 | 50,000 | 0 | |
| White's Memorial | 63 | Thomas Hill, Route 2, Ramseur 27316 | Randolph | 1908 | 1 | X | X | X | X | X | X | X | X | X | X | X | X | X | X | X | X | X | X | X | X | X | X | X | X | X | X | 0 | 13 | 3 | 1 | | | 226 | 0 | 0 | 30,000 | 45,000 | 18,000 |
| Worthville | 5 | | Randolph | 1966 | 3 | X | X | X | X | X | X | X | X | X | X | X | X | X | X | X | X | X | X | X | X | X | X | X | X | X | X | 0 | 6 | 2 | 0 | 79 | 15 | 94 | 1 | 0 | 18,000 | 0 | |

504
236
555
8,084
10,346

| TABLE B THE SUNDAY SCHOOL | | YEAR ENDING SEPT. 30 1971 (Month & Day) | | | | | | | | | | | | | | | | | | | |
|--|----------------|--|------------------------------------|--|-------------------------------------|--|---|--|------------------------|----------------------------|--|--------------------------|--------------------------|---------------------------------------|--------------------------------------|---|---|-----------------------------------|-------------------------------|--------------------------------|---------------------------|
| Association | State | City | Zip | 44 | 45 | 46 | 47 | 48 | 49 | 50 | 51 | 52 | 53 | 54 | 55 | 56 | 57 | 58 | 59 | 60 | |
| | | | | Preschool enrollment (5 years and under-not in school) | Children (6-11 years or grades 1-6) | Youth enrollment (12-17 years or grades 7-12) | Young Adult enrollment (18-29 years or H.S. graduation to 29 years) | Senior Adult enrollment (60 and over or retirement and over) | Adults Away enrollment | Homebound Units enrollment | General officers enrollment (of church) | Total ongoing enrollment | School weekly attendance | Number of Fellowship Bible classes | Fellowship Bible class enrollment | Kindergarten and Day care enrollment | Bible conference projects enrollment | Worship Bible study enrollment | Church V. B. S. enrollment | Mission V. B. S. enrollment | Total V. B. S. enrollment |
| SUNDAY SCHOOL DIRECTORS & ADDRESSES (INCLUDE ZIP CODE) | | | | | | | | | | | | | | | | | | | | | |
| Antioch | North Carolina | Sophia | 27350 | 11 | 12 | 33 | 27 | 21 | - | - | - | 14 | 1 | 104 | 57 | - | - | - | - | - | - |
| Armfield Heights | North Carolina | Walter Ray | Box 160, Asheboro 27203 | 15 | 18 | 21 | 23 | 23 | - | - | 2 | - | - | 102 | 61 | - | - | - | - | - | - |
| Asbury | North Carolina | Edward Hogan | Route 4, Seagrave 27341 | 9 | 37 | 52 | 25 | 53 | 35 | - | - | - | - | 211 | 178 | - | - | - | - | 151 | - |
| Asheboro, First | North Carolina | Roger Pritchard | Route 5, Lomb Road, Asheboro 27203 | 123 | 157 | 164 | 141 | 216 | 141 | - | 25 | 15 | - | 982 | 467 | 1 | 8 | - | - | 200 | - |
| Balfour | North Carolina | Lester Myrick | 594 Vance Street, Asheboro 27203 | 33 | 68 | 64 | 56 | 108 | 29 | 6 | 6 | 5 | - | 375 | 203 | - | - | - | - | 123 | - |
| Beulah | North Carolina | Bobby Poole | Route 2, Bennett 27208 | 75 | 87 | 62 | 80 | 104 | 64 | - | - | 3 | - | 475 | 427 | - | - | - | - | 256 | - |
| Calvary | North Carolina | Boonie Lane | Route 4, Box 37, Asheboro 27203 | 7 | 9 | 5 | 7 | 13 | 4 | - | - | - | - | 45 | 41 | - | - | - | - | - | - |
| Caraway | North Carolina | Clyde Honeycutt | Route 1, Sophia 27350 | 3 | 14 | 22 | 29 | 15 | 25 | - | 2 | - | - | 97 | 55 | - | - | - | - | - | - |
| Cedar Falls | North Carolina | Billy Sellers | Cedar Falls 27230 | 12 | 14 | 13 | 5 | 19 | - | - | - | 2 | - | 94 | 63 | - | - | - | - | 67 | - |
| Center Cross | North Carolina | W. T. Ingold | Route 5, Asheboro 27203 | 4 | 9 | 17 | 33 | 31 | - | - | - | - | - | 94 | 69 | - | - | - | - | 105 | - |
| Central Falls | North Carolina | W. T. Ingold | Route 5, Box 374-C, Asheboro 27203 | 15 | 48 | 16 | 68 | 40 | 5 | - | - | 7 | - | 199 | 132 | - | - | - | - | 93 | - |
| Clear View | North Carolina | Jimmy McRidge | 111 West Ridge St., Ramseur 27316 | 10 | 16 | 21 | 13 | 31 | - | - | - | 3 | - | 94 | 75 | - | - | - | - | 72 | - |
| Cool Springs | North Carolina | Kenneth Pugh | Boonensboro 27400 | 22 | 23 | 24 | 29 | 26 | - | - | - | - | - | 124 | 92 | - | - | - | - | - | - |
| Deep River | North Carolina | Edsel Moffitt | Route 4, Ramseur 27316 | 29 | 33 | 25 | 49 | 91 | 42 | 3 | - | 3 | - | 257 | 177 | - | - | - | - | - | - |
| Forest Park | North Carolina | Carl King | 117 Oak Lane, Randleman 27317 | 21 | 39 | 21 | 30 | 30 | 11 | - | - | 3 | - | 155 | 89 | - | - | - | - | 80 | - |
| Franklinville | North Carolina | Wack Davis | P.O. Box 126, Franklinville 27248 | 14 | 31 | 23 | 20 | 61 | 30 | - | 20 | 4 | - | 203 | 109 | - | - | - | - | 60 | - |
| Glenola | North Carolina | Robert Skeen | Route 3, High Point 27263 | 25 | 35 | 27 | 29 | 76 | 28 | 7 | - | 5 | - | 232 | 169 | - | - | - | - | 90 | - |
| Gravel Hill | North Carolina | Claudie Harrison | Route 1, Denton 27239 | 13 | 14 | 32 | 16 | 23 | 36 | - | - | 5 | - | 139 | 89 | - | - | - | - | 60 | - |
| Greystone | North Carolina | Benny Hampton | Route 7, Box 216-A, Asheboro 27203 | 20 | 14 | 15 | 12 | 62 | 3 | 4 | - | 3 | - | 133 | 70 | - | - | - | - | 34 | - |
| High Rock | North Carolina | Bruce Taylor | Thomasville 27360 | 11 | 12 | 14 | 26 | 31 | - | - | - | - | - | 94 | 75 | - | - | - | - | - | - |
| Hughes Grove | North Carolina | Truman Pritchard | Wellsboro 27203 | 27 | 47 | 38 | 13 | 35 | - | - | - | 13 | - | 211 | 161 | - | - | - | - | - | - |
| HulDAH | North Carolina | Wellsboro | Wellsboro 27203 | 17 | 35 | 23 | 52 | 45 | - | - | - | 3 | - | 175 | 127 | - | - | - | - | 87 | - |
| Jackson Creek | North Carolina | J. T. Martin | P.O. Box 366, Liberty 27298 | 4 | 7 | 12 | 18 | 10 | - | - | - | 3 | - | 54 | 40 | - | - | - | 10 | 70 | - |
| Liberty, First | North Carolina | A.B. York, Jr. | Route 2, Liberty 27298 | 24 | 37 | 43 | 26 | 32 | 25 | - | - | 4 | - | 191 | 112 | - | - | - | 20 | 75 | - |
| Macedonia | North Carolina | Route 2, Liberty | 27298 | 28 | 35 | 22 | 16 | 44 | 33 | - | - | 6 | - | 184 | 129 | - | - | - | - | 81 | - |

| TABLE B THE SUNDAY SCHOOL Association | | Randolph | YEAR ENDING SEPT. 30 (Month & Day) | | | 44 | 45 | 46 | 47 | 48 | 49 | 50 | 51 | 52 | 53 | 54 | 55 | 56 | 57 | 58 | 59 | 60 | | |
|---------------------------------------|--|----------|------------------------------------|------|-------|----|----|----|----|----|----|----|----|----|----|----|----|----|----|----|----|----|-----|--|
| | | | State | City | State | | | | | | | | | | | | | | | | | | Zip | SUNDAY SCHOOL DIRECTORS & ADDRESSES (INCLUDE ZIP CODE) |
| | | | | | | | | | | | | | | | | | | | | | | | | |
| | | | | | | | | | | | | | | | | | | | | | | | | |
| | | | | | | | | | | | | | | | | | | | | | | | | |
| | | | | | | | | | | | | | | | | | | | | | | | | |
| | | | | | | | | | | | | | | | | | | | | | | | | |
| | | | | | | | | | | | | | | | | | | | | | | | | |
| | | | | | | | | | | | | | | | | | | | | | | | | |
| | | | | | | | | | | | | | | | | | | | | | | | | |
| | | | | | | | | | | | | | | | | | | | | | | | | |
| | | | | | | | | | | | | | | | | | | | | | | | | |
| | | | | | | | | | | | | | | | | | | | | | | | | |
| | | | | | | | | | | | | | | | | | | | | | | | | |
| | | | | | | | | | | | | | | | | | | | | | | | | |
| | | | | | | | | | | | | | | | | | | | | | | | | |
| | | | | | | | | | | | | | | | | | | | | | | | | |
| | | | | | | | | | | | | | | | | | | | | | | | | |
| | | | | | | | | | | | | | | | | | | | | | | | | |
| | | | | | | | | | | | | | | | | | | | | | | | | |
| | | | | | | | | | | | | | | | | | | | | | | | | |
| | | | | | | | | | | | | | | | | | | | | | | | | |
| | | | | | | | | | | | | | | | | | | | | | | | | |
| | | | | | | | | | | | | | | | | | | | | | | | | |

8,689-5,500

TABLE C TRAINING UNION YEAR ENDING SEPTEMBER 30 (United & 2001)

| Association | State | Address | City | State | Zip | 1971 | | | | | | | | | | | | | | 73 |
|------------------|-------|--|------|-------|-----|---|--|---|---|--|--|-----------------------------|-----------------------------------|--------------------------|--|--------------|-----------|--------------|-----------|----|
| | | | | | | 81 | 82 | 83 | 84 | 85 | 86 | 87 | 88 | 89 | 90 | 91 | | 92 | | |
| CHURCHES | | | | | | TRAINING UNION DIRECTORS & ADDRESSES (INCLUDE ZIP CODE) | | | | | | | | | | | | | | |
| | | | | | | 81 | 82 | 83 | 84 | 85 | 86 | 87 | 88 | 89 | 90 | 91 | | 92 | | |
| | | | | | | Preschool enrollment (5 years and under—nol in school) | Children enrollment (6-11 years or grades 1-6) | Youth enrollment (12-17 years or grades 7-12) | Young Adult enrollment (18-29 years or H.S. graduation to 29 years) | Adult enrollment (30-59 years or 30 to retirement) | Senior Adult enrollment (60 and over or retirement and over) | General officers enrollment | Enrollment of missions/ or church | Total ongoing enrollment | Average weekly Training Union attendance | Registration | Completed | Registration | Completed | |
| Asheboro, First | | Route 1, Box 888-E, Asheboro 27203 | | | | 42 | 62 | 133 | - | 28 | - | 7 | - | 272 | 89 | 15 | 10 | - | - | |
| Balfour | | Walter Feltus, Jr., 1327 S. Main St., Asheboro 27203 | | | | 3 | 15 | 12 | - | 15 | - | 3 | - | 48 | 31 | - | - | - | - | |
| Bethel | | Jimmy Russell, Route 1, Robbins 27325 | | | | 59 | 38 | 75 | - | 87 | - | 3 | - | 282 | 205 | - | - | - | - | |
| Cedar Falls | | Mrs. Edith Benbow Route 1, Franklinville 27248 | | | | - | - | - | - | 10 | - | 1 | - | 10 | 6 | - | - | - | - | |
| Central Falls | | Johnny Brantley Route 6, Box 300, Asheboro 27203 | | | | 2 | 19 | 12 | - | 14 | - | 2 | - | 49 | 30 | - | - | - | - | |
| Cool Springs | | Eugene Roberts Route 1, Franklinville 27248 | | | | 5 | 8 | 10 | - | - | - | 4 | - | 27 | 18 | - | - | - | - | |
| Forest Park | | Paul Bouldin 311 Sharon Avenue, Asheboro 27203 | | | | 4 | 12 | - | - | 18 | - | 3 | - | 40 | 22 | - | - | - | 18 | |
| Franklinville | | Mrs. Hilda Brower Route 6, Box 171, Asheboro 27203 | | | | 2 | 4 | 6 | 1 | 8 | - | 4 | - | 25 | 12 | - | - | - | 57 | |
| Greystone | | Mrs. T.B. McCallum 114 Boyd Avenue, Asheboro 27203 | | | | 4 | 10 | 17 | - | 20 | - | 3 | - | 54 | 30 | - | - | - | - | |
| Liberty, First | | Alton Hicks, Liberty 27208 | | | | 19 | 7 | 13 | - | 7 | - | 2 | - | 48 | 48 | - | - | - | - | |
| Mount Pleasant | | Fletcher Pugh Route 1, Staley 27355 | | | | 3 | 12 | 25 | 27 | 14 | - | 3 | - | 84 | 60 | - | - | - | - | |
| Oakhurst | | Mrs. Ann Hare Route 2, Cranbrook Circle, Asheboro 27203 | | | | 10 | 12 | 12 | - | 12 | - | 4 | - | 50 | 38 | - | - | - | - | |
| Oakwood Park | | Doyle Owen 293 Holly Street, Asheboro 27203 | | | | 5 | 11 | 8 | - | 9 | - | 1 | - | 34 | 25 | - | - | - | - | |
| Panther Creek | | John Beane Route 1, Asheboro 27203 | | | | 3 | 8 | 7 | 5 | 11 | - | - | - | 34 | 20 | - | - | - | - | |
| Ramseur, First | | James L. Hogan P.O. Box 52, Ramseur 27316 | | | | 4 | 15 | 25 | - | 17 | - | 2 | - | 63 | 37 | - | - | - | 44 | |
| Randleman, First | | Ray Casbatt, Route 3, Box 400, Randleman 27317 | | | | 5 | 14 | 4 | - | 15 | - | 3 | - | 51 | 20 | 15 | 11 | 17 | 8 | |
| Russell's Grove | | Mrs. Dorothy Flowers Balfour Avenue, Asheboro 27203 | | | | 2 | 8 | 13 | 9 | 8 | - | 2 | - | 41 | 30 | - | - | - | - | |
| Seagrove, First | | Henry Blue Route 5, Asheboro 27203 | | | | - | 12 | 10 | - | 12 | - | 1 | - | 35 | 25 | - | - | - | - | |
| Shady Grove | | Glenn McHesters Route 1, Franklinville 27248 | | | | 6 | 6 | 11 | 4 | 18 | - | 2 | - | 47 | 29 | - | - | - | - | |
| Union Grove | | Delbert Garner Route 1, Seagrove 27341 | | | | 6 | 25 | 17 | 14 | 26 | - | 2 | - | 102 | 100 | - | - | 65 | 35 | |
| Westfield | | O. E. Parrish Route 3, Thomasville 27370 | | | | - | - | - | - | - | - | - | - | - | - | - | - | - | - | |

1396

TABLE E WOMAN'S MISSIONARY UNION
 Association _____ YEAR ENDING SCOT. 30 - 1971 (Month & Day)
 State _____

State North Carolina
 Association W.M.U. Director
 Address Mrs. B. C. Pratt
 201 Forrest Dr., Randleman N. C. Zip 27317

CHURCHES W.M.U. DIRECTORS & ADDRESSES (INCLUDE ZIP CODE)

Sophia
 Mrs. Catharine Beasly
 Union Grove Route 2, Seagrave 27341
 Mrs. Lynn Hudson
 Worthville 701 Allred Street, Randleman 27317

| CHURCHES | 86A Mission Friends (under-age in school) | | 87A Girls in Action (grades 1-4) | | 88A (12-17 years or grades 7-12) | | 88B Baptist Young Women (18-29 years or M.S. 23 years) | | 89A Baptist Women (30 and over) | | 91 | | 92A | | 92B | | 93A | | Total W.M.U. | | |
|-------------|---|------------|----------------------------------|------------|----------------------------------|------------|--|------------|---------------------------------|------------|-------------------------|------------|-------------------------|------------|-------------------------|------------|-------------------------|------------|--------------|----|--|
| | Number of organizations | Enrollment | Number of organizations | Enrollment | Number of organizations | Enrollment | Number of organizations | Enrollment | Number of organizations | Enrollment | Number of organizations | Enrollment | Number of organizations | Enrollment | Number of organizations | Enrollment | Number of organizations | Enrollment | | | |
| Sophia | - | - | 1 | 9 | - | - | - | - | - | - | - | - | - | - | - | - | - | - | - | - | |
| Union Grove | 1 | 9 | 1 | 10 | 1 | 12 | 1 | 18 | 1 | 27 | 5 | - | - | - | - | - | - | - | - | 73 | |
| Worthville | - | - | - | - | - | - | 1 | 3 | - | - | - | - | - | - | - | - | - | - | - | 3 | |
| | | | | | | | | | | | | | | | | | | | | | |
| | | | | | | | | | | | | | | | | | | | | | |
| | | | | | | | | | | | | | | | | | | | | | |

1116

| TABLE F. BROTHERHOOD Association | | YEAR ENDING SEPT. 30 (Month & Day) | | 1971 | 1970 | 1969 | 1968 | 1967 | 1966 | 1965 | 1964 | 1963 | 1962 | 1961 |
|---|--|--|--|------|------|------|------|------|------|------|------|------|------|------|
| Site | | BROTHERHOOD DIRECTORS & ADDRESSES (INCLUDE ZIP CODE) | | 84 | 85 | 86 | 87 | 88 | 89 | 90 | 91 | 92 | 93 | 94 |
| North Carolina Association of Brotherhood Directors | | Brotherhood Directors & Addresses (Include Zip Code) | | 84 | 85 | 86 | 87 | 88 | 89 | 90 | 91 | 92 | 93 | 94 |
| Carl Zeigler | | Brotherhood Directors & Addresses (Include Zip Code) | | 84 | 85 | 86 | 87 | 88 | 89 | 90 | 91 | 92 | 93 | 94 |
| Address | | Address | | 84 | 85 | 86 | 87 | 88 | 89 | 90 | 91 | 92 | 93 | 94 |
| Route 7, Box 222 | | Route 7, Box 222 | | 84 | 85 | 86 | 87 | 88 | 89 | 90 | 91 | 92 | 93 | 94 |
| City | | City | | 84 | 85 | 86 | 87 | 88 | 89 | 90 | 91 | 92 | 93 | 94 |
| State | | State | | 84 | 85 | 86 | 87 | 88 | 89 | 90 | 91 | 92 | 93 | 94 |
| N. C. | | N. C. | | 84 | 85 | 86 | 87 | 88 | 89 | 90 | 91 | 92 | 93 | 94 |
| Zip | | Zip | | 84 | 85 | 86 | 87 | 88 | 89 | 90 | 91 | 92 | 93 | 94 |
| 27203 | | 27203 | | 84 | 85 | 86 | 87 | 88 | 89 | 90 | 91 | 92 | 93 | 94 |
| Asbury | J. R. Hancock Route 2, Seagrave 27341 | | | - | 9 | - | 9 | - | - | - | - | - | - | 18 |
| Balfour | Neal Cockerham 447 E. Kivett St., Asheboro 27203 | | | 9 | 5 | - | 14 | - | 1 | - | - | - | - | 29 |
| Central Falls | Joe Brantley Route 6, Box 300, Asheboro 27203 | | | 7 | 15 | - | 10 | - | 1 | - | - | - | - | 42 |
| Forest Park | Wade Snider 317 Pineview Ave., Asheboro 27203 | | | 9 | - | - | 5 | - | 1 | - | - | - | - | 15 |
| Franklinville | Abbie Smith Route 4, High Point 27263 | | | 7 | - | - | - | - | - | - | - | - | - | 7 |
| Glenola | Joe Anderson Route 4, Asheboro 27203 | | | - | - | 2 | 9 | 3 | 3 | - | - | - | - | 17 |
| Greystone | Wayne Taylor Long Street, Thomasville 27360 | | | - | - | - | 15 | - | - | - | - | - | - | 15 |
| Hughes Grove | Jim Parker Liberty 27298 | | | 6 | 7 | 3 | 40 | - | - | - | - | - | - | 16 |
| Liberty, First | Liberty 27298 | | | 6 | 7 | 3 | 40 | - | - | - | - | - | - | 56 |
| Macedonia | Route 3, Box 2, Liberty 27298 | | | - | - | - | 13 | - | 1 | - | - | - | - | 13 |
| Mt. Lebanon | Jim Adkins Route 1, Liberty 27298 | | | - | 8 | - | - | - | - | - | - | - | - | 8 |
| Mt. Pleasant | Robert Ausley 362 Hawthorne Drive, Asheboro 27203 | | | 7 | - | - | 30 | - | 1 | - | - | - | - | 37 |
| Oakhurst | D. B. Hilliard, Sr. Route 3, Box 514, Randleman 27317 | | | 12 | 6 | - | - | - | 6 | - | - | - | - | 24 |
| Ramseur, First | Bobby Needham Route 5, Asheboro 27203 | | | 7 | 7 | - | - | - | - | - | - | - | - | 14 |
| Randleman, First | Russell's Grove | | | 16 | 5 | - | 15 | - | 4 | - | - | - | - | 40 |
| Russell's Grove | Sophia | | | 11 | 5 | - | - | - | 5 | - | - | - | - | 21 |
| Union Grove | Clinton McNeill Seagrave 27341 | | | 6 | 11 | - | - | - | - | - | - | - | - | 17 |
| Westfield | Carl Zeigler Route 5, Thomasville 27360 | | | 10 | 6 | - | 25 | - | 5 | - | - | - | - | 46 |
| | | | | - | - | - | - | - | - | - | - | - | - | - |

425

TABLE 6 TOTAL RECEIPTS, LOCAL EXPENDITURES & STEWARDSHIP YEAR ENDING Sept. 30, 1971 (Month & Day)

| Association | Site | City | State | Zip | TREASURERS & ADDRESSES (INCLUDE ZIP CODE) | 12 | 13 | | 14 | 15 | 102 | 103 | 104 | 105 | 106 | 107 | 108 | 109 | 110 |
|----------------|-------------------|--------------------------------|-------|-------|---|-----|-------------------|----------------------------------|------|---------|-------|---------|-----|--------|--------|--------|--------|---------|-----|
| | | | | | | | Number of titlers | Budget for or against this year. | | | | | | | | | | | |
| Association | Randolph | | | | | | | | | | | | | | | | | | |
| North Carolina | | | | | | | | | | | | | | | | | | | |
| Association | James R. Lane | | | | | | | | | | | | | | | | | | |
| Association | 913 Shamrock Road | Asheboro | N. C. | 27203 | | | | | | | | | | | | | | | |
| CHURCHES | | | | | | | | | | | | | | | | | | | |
| | Antioch | Hartlin L. Cain | | | 443 East Pritchard, Asheboro 27203 | 17 | X | | | 4,843 | - | 4,843 | - | 1,200 | - | 526 | 2,244 | 3,970 | |
| | Armfield Heights | Heien D. Jones | | | 827 Furman Road, Asheboro 27203 | - | | | 01% | 13,748 | - | 13,748 | - | 4,040 | 18,000 | - | 2,810 | 24,850 | |
| | Asbury | Albert Brewer | | X | Route 2, Seagrave 27341 | 42 | X | | | 23,183 | - | 23,183 | - | 7,300 | - | - | 4,797 | 12,097 | |
| | Asheboro, First | W. T. Denson | | X | 232 Spring Garden, Asheboro 27203 | 270 | X | 15% | | 152,483 | - | 152,483 | - | 40,026 | - | 40,560 | 54,917 | 135,504 | |
| | Balfour | L. D. Routh | | X | 225 W. Beasley Street, Asheboro 27203 | 125 | X | 19% | 2.5% | 47,440 | - | 47,440 | - | 14,447 | - | - | 21,167 | 35,614 | |
| | Beulah | L. L. Purvis | | X | Route 2, Bennett 27208 | 200 | X | | | 107,539 | - | 107,539 | - | 20,400 | 10,000 | 12,000 | 20,430 | 62,830 | |
| | Calvary | Bobby E. Poole | | X | Route 4, Box 37, Asheboro 27203 | 10 | X | 5% | | 6,987 | 375 | 7,362 | - | 2,292 | 647 | - | 897 | 3,836 | |
| | Cataway | Evelyn Cooper | | | Route 1, Sophia 27350 | - | | 10% | 10% | 5,644 | - | 5,644 | - | 2,010 | - | - | 1,558 | 3,566 | |
| | Cedar Falls | Ann Halthcock | | X | Route 1, Franklinville 27248 | 6 | X | 5% | | 7,639 | - | 7,639 | - | 3,925 | - | - | 1,262 | 5,187 | |
| | Center Cross | Mrs. Thelma Sellers | | | Route 5, Asheboro 27203 | 18 | | | | 10,531 | 140 | 10,635 | - | 4,866 | 3,500 | - | 2,425 | 10,791 | |
| | Central Falls | Claude Poole | | X | P.O. Box 274, Central Falls 27232 | 44 | X | 4% | | 24,500 | 28 | 24,528 | - | 7,820 | 1,357 | 1,487 | 4,961 | 15,625 | |
| | Clear View | Jimmy R. Smith | | X | P.O. Box 245, Cedar Falls 27230 | 36 | X | 5% | 1% | 16,363 | - | 16,363 | - | 5,772 | 875 | - | 2,469 | 9,116 | |
| | Cool Springs | Leona Cox | | | Route 3, Sandelman 27317 | - | | | | 10,057 | - | 10,057 | - | - | 1,766 | - | 8,479 | 10,245 | |
| | Deep River | Route 3, Ramseur | | | Route 3, Ramseur 27316 | - | | 12% | | 15,400 | - | 15,400 | - | 7,700 | - | - | 3,000 | 10,700 | |
| | Forest Park | Reed Parris | | X | P.O. Box 33, Sophia 27350 | 25 | X | | | 18,040 | - | 18,040 | - | 5,440 | 920 | 4,040 | 3,988 | 14,388 | |
| | Franklinville | Tesse Martin | | X | Route 1, Box 66, Franklinville 27248 | 40 | X | 13% | 3% | 27,983 | - | 27,983 | - | 6,725 | 4,316 | 2,660 | 6,458 | 20,159 | |
| | Glenola | Prestis Wood | | X | Route 3, High Point 27263 | 55 | X | | | 25,225 | 110 | 25,335 | - | 7,960 | 4,795 | 3,900 | 5,910 | 22,565 | |
| | Gravel Hill | Alvin Hogan | | X | Route 3, Denton 27239 | 14 | X | | | 8,043 | - | 8,043 | - | 5,620 | - | - | 1,874 | 7,494 | |
| | Greystone | James R. Lane | | X | 913 Shamrock Road, Asheboro 27203 | 34 | X | 10% | 2% | 24,486 | - | 24,486 | - | 4,983 | - | 11,237 | 5,684 | 21,904 | |
| | Hilh Rock | Mrs. Ernest Briles | | X | Route 1, Trinity 27370 | - | X | | | - | - | - | - | - | 2,500 | - | - | - | |
| | Hughes Grove | Mrs. Thelma Bowers | | X | Route 3, Thomasville 27360 | 60 | X | | | 24,283 | - | 24,491 | - | 7,551 | 67,000 | - | 6,571 | 81,122 | |
| | Huldah | Wayne Thomas | | | Route 4, Asheboro 27203 | - | | | | 22,591 | 147 | 22,738 | - | 6,215 | 3,966 | 1,692 | 5,947 | 17,815 | |
| | Jackson Creek | Mrs. Clyde Scarlett | | | Route 2, Box 391, Lexington 27292 | 17 | X | | | 5,992 | - | 5,992 | - | 2,790 | 2,141 | - | 655 | 5,569 | |
| | Liberty, First | Mrs. Betty Gwinn | | X | P.O. Box 1092, Liberty 27298 | 60 | X | 10% | 4% | 34,702 | 1,491 | 36,193 | - | 11,660 | 900 | - | 9,938 | 22,497 | |
| | Macedonia | Route 4, Box 37, Liberty 27298 | | X | | 30 | X | 8% | 2% | 30,547 | - | 30,547 | - | 6,098 | - | 13,368 | 7,290 | 26,757 | |

TABLE G. TOTAL RECEIPTS, LOCAL EXPENDITURES & STEWARDSHIP YEAR ENDING SEPT. 30, 1971 (Month & Day)

| Association | State | Address | City | State | Zip | 12 | 13 | | 14 | 15 | 162 | 163 | 164 | 165 | 166 | 167 | 168 | 169 | 170 |
|---|----------------|---|----------------|-------|-------|-----|--|------------------|-------|--------|-------|-------|--------|--------|--------|--------|--------|--------|--------|
| | | | | | | | Budget prom. or em- phasis used during the year. | Number of others | | | | | | | | | | | |
| <p>CHURCHES</p> <p>Treasurers & Addresses (include zip code)</p> | | | | | | | | | | | | | | | | | | | |
| Maple Springs | North Carolina | 350 Clearview, Asheboro 27203 | Asheboro | N. C. | 27203 | 20 | | 7% | 1% | 11,370 | - | - | 11,370 | - | 6,159 | 2,045 | - | 2,200 | 10,404 |
| Mount Lebanon | North Carolina | V. L. Callicutt Route 5, Asheboro 27203 | Asheboro | N. C. | 27203 | 14 | | - | - | 11,696 | 542 | 542 | 12,238 | - | 3,954 | 376 | - | 1,349 | 5,679 |
| Mount Pleasant | North Carolina | Boyd Poe Box 725, Liberty 27298 | Liberty | N. C. | 27298 | 46 | | 7 1/2% | - | 23,422 | 56 | 56 | 23,478 | - | 7,960 | - | - | 12,946 | 20,906 |
| Okhurst | North Carolina | Carvus Hames, Jr. 2138 Steele Street, Asheboro 27203 | Asheboro | N. C. | 27203 | 70 | X | 12% | 1.93% | 54,196 | 2,861 | 2,861 | 57,057 | - | 14,783 | - | - | 30,358 | 45,141 |
| Oakwood Park | North Carolina | White Burke Route 9, Box 66, Asheboro 27203 | Asheboro | N. C. | 27203 | 12 | X | 4 1/2% | 1% | 10,959 | - | - | 10,959 | - | 2,400 | - | 1,410 | 2,191 | 6,001 |
| Panther Creek | North Carolina | Mrs. Melita Dixon Box 14, Asheboro 27203 | Asheboro | N. C. | 27203 | 13 | X | - | - | 3,046 | - | - | 3,046 | - | 3,058 | - | - | - | 3,058 |
| Ramsaur, First | North Carolina | Hot Clark Ramsaur 27316 | Ramsaur | N. C. | 27316 | - | | - | - | 37,498 | 1,075 | 1,075 | 38,573 | - | 9,429 | 6,051 | - | 18,296 | 33,775 |
| Randleman, First | North Carolina | Mrs. D. B. Hilliard Route 3, Box 514, Randleman 27317 | Randleman | N. C. | 27317 | 125 | X | 11% | 2% | 39,535 | - | - | 39,535 | 2,300 | 13,116 | 2,300 | 12,256 | 7,655 | 35,389 |
| Red Cross | North Carolina | Mrs. Paul Whitaker Route 1, Climax 27233 | Climax | N. C. | 27233 | 40 | | - | - | 24,657 | - | - | 24,657 | 32,600 | 6,680 | 32,600 | 4,532 | 6,962 | 50,784 |
| Richland | North Carolina | Joseph E. Brown 406 Ridge Avenue, Asheboro 27203 | Asheboro | N. C. | 27203 | 15 | X | - | - | 12,011 | - | - | 12,011 | - | 4,820 | 500 | 2,500 | 3,200 | 11,020 |
| Riverside | North Carolina | Edgar Garner Route 1, Seagrove 27341 | Seagrove | N. C. | 27341 | 9 | X | - | - | 7,851 | - | - | 7,851 | - | 2,975 | - | - | 1,959 | 4,934 |
| Russell's Grove | North Carolina | Mrs. W.M. Pope Route 5, Asheboro 27203 | Asheboro | N. C. | 27203 | 68 | X | 9% | 3% | 27,572 | 100 | 100 | 27,672 | - | 8,545 | - | - | 6,858 | 15,403 |
| Sandy Creek | North Carolina | Russell Routh Route 1, Liberty 27298 | Liberty | N. C. | 27298 | 26 | X | 2% | 1% | 14,580 | - | - | 14,580 | 10,000 | 3,900 | 28,864 | - | 5,916 | 38,680 |
| Seagrove, First | North Carolina | Mrs. Lucille Saunders Route 5, Box 312-K, Asheboro 27203 | Asheboro | N. C. | 27203 | 26 | X | 1% | - | 18,760 | - | - | 18,760 | - | 4,820 | - | 6,760 | 6,770 | 18,350 |
| Shady Grove | North Carolina | Vaughan York Route 1, Staley 27355 | Staley | N. C. | 27355 | 31 | X | 5% | 3% | 16,645 | 1,216 | 1,216 | 17,861 | - | 4,502 | 2,320 | 8,401 | 2,268 | 17,491 |
| Sopha | North Carolina | Mrs. Sue Bame Route 1, Seagrove 27350 | Seagrove | N. C. | 27350 | 65 | | - | - | 12,300 | - | - | 12,300 | - | 3,142 | 5,500 | - | 7,000 | 15,692 |
| Union Grove | North Carolina | Colton L. Kewell Route 25, Seagrove 27341 | Seagrove | N. C. | 27341 | 175 | X | 10% | 5% | 55,744 | - | - | 55,744 | - | 13,480 | - | 16,212 | 19,498 | 49,190 |
| Hestfield | North Carolina | Mrs. Ray Myers Route 1, Frisby 27370 | Frisby | N. C. | 27370 | 6 | | - | - | - | - | - | - | 1,000 | 7,000 | - | - | 60 | 8,060 |
| White's Memorial | North Carolina | Mrs. Helen Hitting Route 1, Franklinsville 27248 | Franklinsville | N. C. | 27248 | 48 | | - | - | 34,819 | - | - | 34,819 | - | 8,272 | 2,510 | 1,166 | 17,200 | 32,148 |
| Worthville | North Carolina | Don Barney Route 3, Randleman 27317 | Randleman | N. C. | 27317 | 24 | | 11% | - | 9,295 | 80 | 80 | 9,375 | - | 4,160 | 351 | - | 1,269 | 5,170 |

1,002,598
1,047,205

TABLE II MISSION EXPENDITURES 1971 YEAR ENDING Sept/Ember 30 1971 (Month & Day)

| Church | Address | City | State | Zip | CHURCH SPONSORED MISSIONS | | | | | | | | | | Grand Total | | | | | |
|------------------|--|-------|-------|-------|--|---|---|---------------------|--------------------------------|----------------------------|--|---|---|--|-----------------------|--------------------------------|--------------------------------------|--|--------|------|
| | | | | | 111 | 112 | 113 | 114 | 115 | 116 | 117 | 118 | 119 | 120 | | 121 | 122 | 123 | 124 | 125 |
| | | | | | Money paid out on new construction during the year | All other church sponsored mission expenditures | Total church sponsored mission expenditures | Cooperative Program | Associational missions program | Designated: State missions | Designated: SBC Home Missions (incl. Anne Armstrongs Easter) | Designated: SBC Foreign Missions (incl. Lottie Moon Christmas offering) | Designated: Christian Education (schools, etc.) | Designated: Children's homes (cash plus goods) | Designated: Hospitals | Designated: Homes for the aged | Designated: All other (League, etc.) | Total Cooperative mission expenditures | 840 | |
| Churches | | | | | | | | | | | | | | | | | | | | |
| Maple Springs | Mrs. Thurman Davis Route 5, Asheboro | 27203 | N. C. | 27203 | - | - | - | - | - | 130 | 100 | 100 | 300 | 25 | 130 | 55 | - | - | 840 | 840 |
| Mount Lebanon | Mrs. Alvin Shaw Route 5, Asheboro | 27203 | N. C. | 27203 | - | - | - | 1,000 | 240 | 104 | 146 | 208 | - | 240 | 254 | 260 | 621 | 3,073 | 3,073 | 1833 |
| Mount Pleasant | Mrs. Gyles Buckner Route 1, Ramseur | 27316 | N. C. | 27316 | - | - | - | 1,471 | 300 | 115 | 725 | 1,013 | 75 | 75 | 100 | 105 | 60 | 4,039 | 4,039 | 2268 |
| Oakhurst | Mrs. Barbara Winslow 1918 McDermott, Asheboro | 27203 | N. C. | 27203 | - | - | - | 5,850 | 960 | 196 | 225 | 1,196 | 150 | 406 | 258 | 173 | 686 | 10,100 | 10,100 | 3290 |
| Oakwood Park | Mrs. Clarence Triggdon 4760 Reaigh Road, Asheboro | 27203 | N. C. | 27203 | - | - | - | 400 | 120 | 253 | 290 | 706 | - | 151 | 119 | 157 | 227 | 2,423 | 2,423 | 1903 |
| Panther Creek | Mrs. Fred Oberdorfer Route 1, Ramseur | 27203 | N. C. | 27203 | - | - | - | - | - | - | - | - | - | 35 | - | - | 35 | 70 | 70 | 70 |
| Ramseur | Mrs. Kathryn Bray Route 1, Ramseur | 27316 | N. C. | 27316 | - | - | - | 9,144 | 906 | 381 | 294 | 1,561 | 53 | 180 | 170 | 50 | 1,186 | 13,929 | 13,929 | 3879 |
| Randleman, First | Mrs. Harold Cross 116 Freeman Street, Randleman | 27317 | N. C. | 27317 | - | - | - | 1,970 | 840 | 199 | 248 | 1,205 | 36 | 203 | 185 | 82 | 125 | 6,505 | 6,505 | 3695 |
| Red Cross | Mrs. Myrtle Snider Route 1, Gilmax | 27233 | N. C. | 27233 | 1,929 | - | - | - | - | - | - | - | - | 62 | 56 | 125 | - | 244 | 2,173 | 2173 |
| Richland | Mrs. J. A. Buhanks 1816 Pinegrove Drive, Asheboro | 27203 | N. C. | 27203 | - | - | - | - | - | 204 | - | 231 | - | 237 | 20 | 229 | - | 921 | 921 | 921 |
| Riverside | Mrs. Mary Ruth Burcham Route 1, Seagrove | 27341 | N. C. | 27341 | - | - | - | 60 | 120 | 32 | - | 148 | 14 | 113 | 71 | 72 | - | 630 | 630 | 450 |
| Russell's Grove | Mrs. Ann Pope Route 3, Asheboro | 27203 | N. C. | 27203 | - | - | - | 2,484 | 828 | 1,265 | 234 | 270 | 18 | 70 | 312 | 65 | 11 | 5,557 | 5,557 | 2245 |
| Sandy Creek | Mrs. Connie Heilig Route 1, Liberty | 27298 | N. C. | 27298 | - | - | - | 165 | 150 | 80 | 161 | 285 | 20 | 99 | 100 | 88 | 55 | 1,205 | 1,205 | 890 |
| Seagrove | Mrs. Lucille Saunders Route 5, Asheboro | 27203 | N. C. | 27203 | - | - | - | - | - | - | - | - | - | 25 | - | - | - | 25 | 25 | 25 |
| Shady Grove | Mrs. Christine Eggen Mrs. Elaine Eggen Route 1, Seagrove | 27352 | N. C. | 27352 | - | - | - | 780 | 84 | - | - | - | - | 8 | 25 | - | - | 897 | 897 | 33 |
| Sophia | Mrs. Linda Carter 4820 Nacon Drive, High Point | 27263 | N. C. | 27263 | - | - | - | 180 | - | - | - | - | - | - | 34 | 3 | - | 217 | 217 | 37 |
| Union Grove | Roy H. McNeill Route 2, Box 300, Seagrove | 27341 | N. C. | 27341 | - | - | - | 867 | 600 | 190 | 84 | 300 | 143 | 117 | 84 | 50 | 1,941 | 4,376 | 4,376 | 2909 |
| Westfield | Dallas Wyrff Route 1, Trinity | 27370 | N. C. | 27370 | - | - | - | - | - | - | - | 153 | - | - | - | - | - | 153 | 153 | 153 |
| White's Memorial | Mrs. Evelyn Jennings Route 3, Randleman | 27317 | N. C. | 27317 | - | - | - | - | - | - | 60 | 70 | - | 113 | 331 | - | - | 574 | 574 | 574 |
| Worthville | Ricky Jordan Route 2, Randleman | 27317 | N. C. | 27317 | - | - | - | 816 | 120 | 80 | 40 | 142 | 360 | 80 | 65 | 40 | 170 | 1,913 | 1,913 | 995 |

Handwritten notes and corrections:

- 134920
- 488261
- 129606
- 61115

