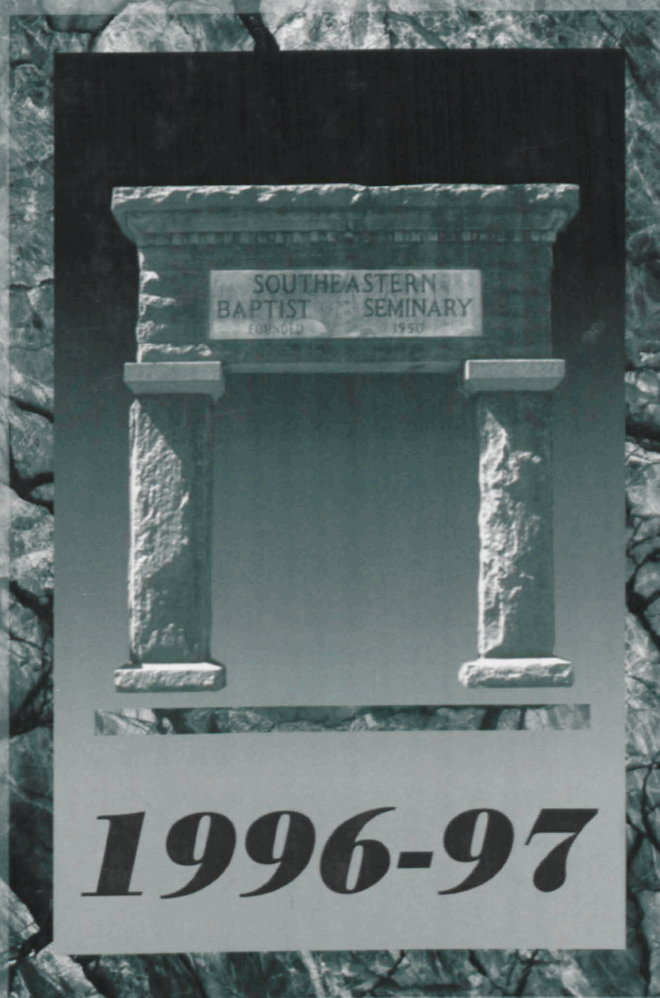
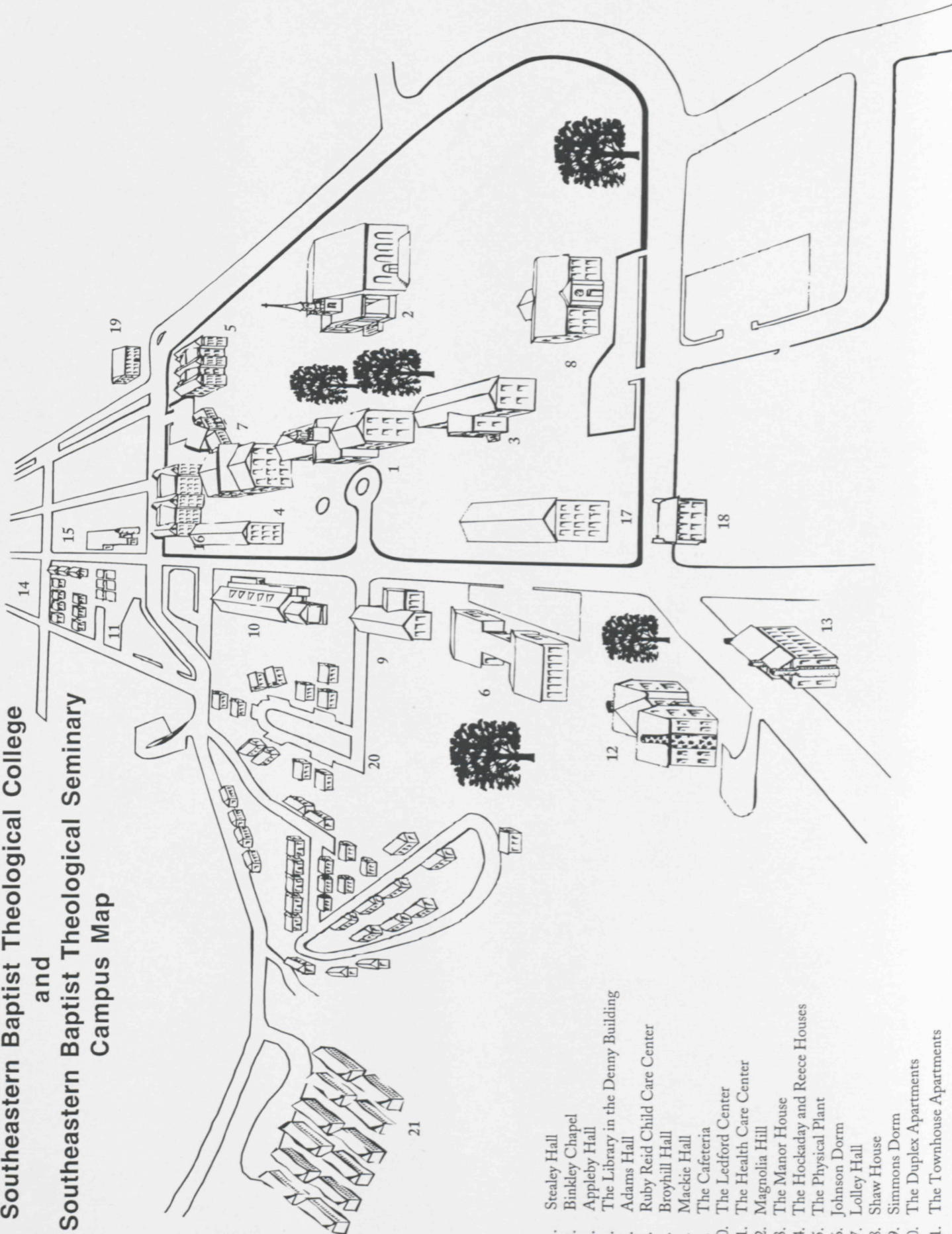


Southeastern *Baptist Theological College*



Catalog

Southeastern Baptist Theological College and Southeastern Baptist Theological Seminary Campus Map



1. Stealey Hall
2. Binkley Chapel
3. Appleby Hall
4. The Library in the Denny Building
5. Adams Hall
6. Ruby Reid Child Care Center
7. Broyhill Hall
8. Mackie Hall
9. The Cafeteria
10. The Ledford Center
11. The Health Care Center
12. Magnolia Hill
13. The Manor House
14. The Hockaday and Reece Houses
15. The Physical Plant
16. Johnson Dorm
17. Lolley Hall
18. Shaw House
19. Simmons Dorm
20. The Duplex Apartments
21. The Townhouse Apartments



Southeastern Baptist Theological College

"His delight is in the law of the Lord ... like a tree planted by streams of water" - Psalm 1

Bulletin & Catalog for 1996

Table of Contents

Statements of Purpose and Mission	2
The Abstract of Principles	3
Introduction	4
Faculty Profile	5
Academic Calendar	6
Admission Policy	8
Fees and Expenses	9
Housing Regulations	10
Student Financial Assistance	11
Special Scholarships and Aid Funds	12
Alumni Association	13
Campus and Facilities	14
College Community Life	18
Academic Policies and Procedures	22
Summer School	25
Short Term Courses	25
The Lewis Addison Drummond Center for Great Commission Studies	25
Degree Programs	26
Associate of Divinity	26
Bachelor of Arts in Biblical Studies	27
Description of Courses	28
Register	32
Index	39

A COLLEGE OF THE SOUTHERN BAPTIST CONVENTION

Southeastern Baptist Theological College (USPS 504-560)

Volume I Issue I

Paige Patterson, *President*

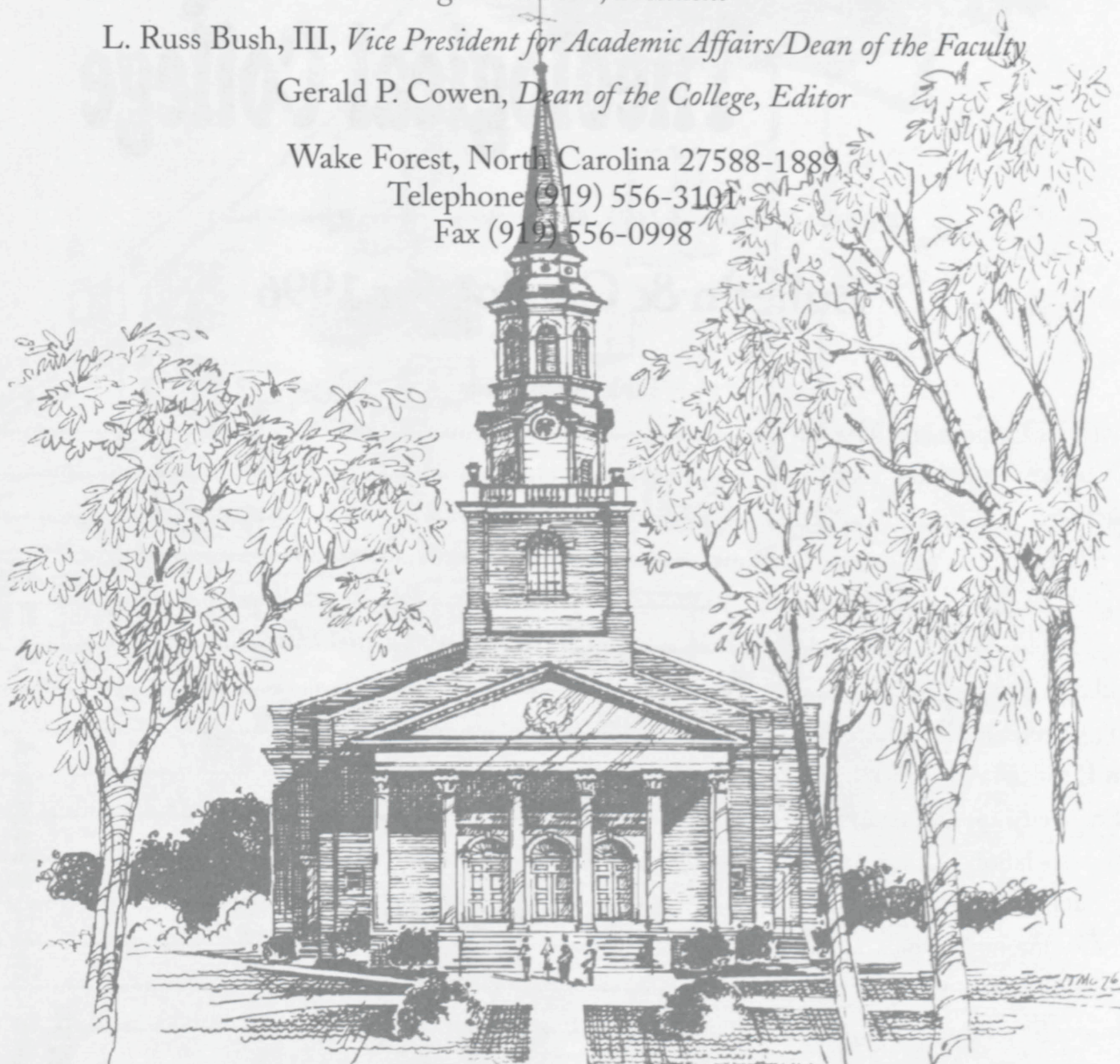
L. Russ Bush, III, *Vice President for Academic Affairs/Dean of the Faculty*

Gerald P. Cowen, *Dean of the College, Editor*

Wake Forest, North Carolina 27588-1889

Telephone (919) 556-3101

Fax (919) 556-0998



Southeastern Baptist Theological College

Statement of Purpose

Southeastern Baptist Theological College seeks to prepare God-called men and women for vocational service in Baptist churches and in other Christian ministries throughout the world. This purpose is implemented through programs of spiritual development, theological studies, and practical preparation in ministry.

In addition, the College seeks to prepare students for more advanced study in a seminary master's program.

The Abstract of Principles Southeastern's Articles of Faith

Article IX of the By-Laws of the Southeastern Baptist Theological Seminary, Inc., adopted December 7, 1950, provides that "All members of the faculty shall be required to subscribe to the Articles of Faith, or Beliefs, as adopted by the Board, and publicly sign these Articles at the opening of the session at which they enter upon their duties." These articles were originally prepared for and adopted by the Southern Baptist Theological Seminary, founded in 1859

I. The Scriptures.

The Scriptures of the Old and New Testaments were given by inspiration of God, and are the only sufficient, certain and authoritative rule of all saving knowledge, faith and obedience.

II. God.

There is but one God, the Maker, Preserver and Ruler of all things, having in and of Himself all perfections, and being infinite in them all; and to Him all creatures owe the highest love, reverence and obedience.

III. The Trinity.

God is revealed to us as Father, Son, and Holy Spirit each with distinct personal attributes, but without division of nature, essence, or being.

IV. Providence.

God from eternity, decrees or permits all things that come to pass, and perpetually upholds, directs and governs all creatures and all events; yet so as not in any wise to be author or approver of sin nor to destroy the free will and responsibility of intelligent creatures.

V. Election.

Election is God's eternal choice of some persons unto everlasting life—not because of foreseen merit in them, but of His mere mercy in Christ—in consequence of which choice they are called, justified, and glorified.

VI. The Fall of Man.

God originally created man in His own image, and free from sin; but through the temptation of Satan, he transgressed the command of God, and fell from his original holiness and righteousness; whereby his posterity inherit a nature corrupt and wholly opposed to God and His law, are under condemnation, and as soon as they are capable of moral action, become actual transgressors.

VII. The Mediator.

Jesus Christ, the only begotten Son of God, is the divinely appointed Mediator between God and man. Having taken upon Himself human nature, yet without sin, He perfectly fulfilled the law, suffered and died upon the cross for the salvation of sinners. He was buried, and rose again the third day, and ascended to His Father, at whose right hand He ever liveth to make intercession for His people. He is the only Mediator, the Prophet, Priest, and King of the Church, and Sovereign of the Universe.

VIII. Regeneration.

Regeneration is a change of heart, wrought by the Holy Spirit, who quickeneth the dead in trespasses and sins, enlightening their minds spiritually and savingly to understand the Word of God, and renewing their whole nature, so that they love and practice holiness. It is a work of God's free and special grace alone.

IX. Repentance.

Repentance is an evangelical grace, wherein a person being, by the Holy Spirit, made sensible of the manifold evil of his sin, humbleth himself for it, with godly sorrow, detestation of it, and self-abhorrence, with a purpose and endeavor to walk before God so as to please Him in all things.

X. Faith.

Saving faith is the belief, on God's authority, of whatsoever is revealed in His Word concerning Christ; accepting and resting upon Him alone for justification and eternal life. It is wrought in the heart by the Holy Spirit, and is accompanied by all other saving graces, and leads to a life of holiness.

XI. Justification.

Justification is God's gracious and full acquittal of sinners, who believe in Christ, from all sin, through the satisfaction that Christ has made; not for anything wrought in them or done by them; but on account of the obedience and satisfaction of Christ, they receiving and resting on Him and His righteousness by faith.

XII. Sanctification.

Those who have been regenerated are also sanctified by God's word and Spirit dwelling in them. This sanctification is progressive through the supply of Divine strength, which all saints seek to obtain, pressing after a heavenly life in cordial obedience to all Christ's commands.

XIII. Perseverance of the Saints.

Those whom God hath accepted in the Beloved, and sanctified by His Spirit, will never totally nor finally fall away from the state of grace, but shall certainly persevere to the end; and though they may fall, through neglect and temptation, into sin, whereby they grieve the Spirit, impair their graces and comforts, bring reproach on the Church, and temporal judgments on themselves, yet they shall be renewed again unto repentance, and be kept by the power of God through faith unto salvation.

XIV. The Church.

The Lord Jesus is the Head of the Church, which is composed of all his true disciples, and in him is invested supremely all power for its government. According to his commandment, Christians are to associate themselves into particular societies or churches; and to each of these churches He hath given needful authority for administering that order, discipline and worship which he hath appointed. The regular officers of a Church are Bishops or Elders, and Deacons.

XV. Baptism.

Baptism is an ordinance of the Lord Jesus, obligatory upon every believer, wherein he is immersed in water in the name of the Father, and of the Son, and of the Holy Spirit, as a sign of his fellowship with the death and resurrection of Christ, of remission of sins, and of his giving himself up to God, to live and walk in newness of life. It is prerequisite to church fellowship, and to participation in the Lord's Supper.

XVI. The Lord's Supper.

The Lord's Supper is an ordinance of Jesus Christ, to be administered with the elements of bread and wine, and to be observed by his churches till the end of the world. It is in no sense a sacrifice, but is designed to commemorate his death, to confirm the faith and other graces of Christians, and to be a bond, pledge and renewal of their communion with him, and of their church fellowship.

XVII. The Lord's Day.

The Lord's day is a Christian institution for regular observance, and should be employed in exercises of worship and spiritual devotion, both public and private, resting from worldly employments and amusements, works of necessity and mercy only excepted.

XVIII. Liberty of Conscience.

God alone is Lord of the conscience; and He hath left it free from the doctrines and commandments of men, which are in anything contrary to His word, or not contained in it. Civil magistrates being ordained of God, subjection to all lawful things commanded by them ought to be yielded by us in the Lord, not only for wrath, but also for conscience sake.

XIX. The Resurrection.

The bodies of men after death return to dust, but their spirits return immediately to God—the righteous to rest with Him; the wicked, to be reserved under darkness to the judgment. At the last day, the bodies of all the dead, both just and unjust, will be raised.

XX. The Judgment.

God hath appointed a day, wherein he will judge the world by Jesus Christ, when everyone shall receive according to his deeds: the wicked shall go into everlasting punishment; the righteous, into everlasting life.

Introduction

Southeastern Baptist Theological College is an integral part of Southeastern Baptist Theological Seminary which is an institution of the Southern Baptist Convention (SBC). Both institutions are governed by the same board of Trustees elected by the Convention. Trustees in turn elect the President, Administrative Cabinet members, and the Faculty. The Seminary and College receive a major part of their operating expenses and capital needs from the SBC's Cooperative Program. These funds are supplemented by student fees and special gifts from alumni and friends.

Southeastern Baptist Theological College is a separate school with its own faculty. However, it operates under the direction of the President, Administration, and Board of Trustees of Southeastern Baptist Theological Seminary.

Location

Wake Forest, North Carolina is home to the approximately 300 acre campus of Southeastern Seminary and Southeastern Baptist Theological College. The campus is located 10 miles north of Raleigh and 25 miles east of Durham, both medium-sized centers of education and business. Coupled with Chapel Hill, the three cities comprise an area known as the Research Triangle of North Carolina. The vibrant Triangle area is home to three of the nation's major universities: Duke, The University of North Carolina, and North Carolina State. Wake Forest is on US 1 at NC 98. It is serviced by the Raleigh-Durham airport (RDU) and is easily reached from Interstates 95, 85 and 40.

Campus Visits for Prospective Students

Arrangements can be made for prospective students to tour the campus, see seminary housing, visit classes, and meet other students, professors, and administrators. Accommodations and meals will be made available to prospective students for up to two days without charge. To make reservations for such a visit write the Admissions Office at P. O. Box 1889, Wake Forest, NC 27588-1889 or call toll free 1-800-284-6317.

History

Southeastern Baptist Theological Seminary became a reality on May 19, 1950, by vote of the Southern Baptist Convention meeting in Chicago, Illinois. To house the Seminary, the Convention purchased the campus of Wake Forest College in Wake Forest, North Carolina—recognized then and now as one of the most beautiful in the South. But more than beauty, the campus claimed a Baptist heritage. The property was originally obtained in 1832 by the Baptists of North Carolina in order to build a college for educating ministers.

Trustees, elected by the Convention, secured a charter and adopted the *Abstract of Principles* as the Seminary's Articles of Faith. Next they elected the Seminary's first president, Dr. Sydnor L. Stealey.

In the Fall of 1951, Southeastern began classes. Opening day, September 12, was attended by 85 students and three faculty members. The Seminary met in the classroom building now known as Appleby Hall on the Wake Forest campus. In

the beginning, the Seminary offered only a basic theological program leading to a Bachelor of Divinity degree.

In 1956, when Wake Forest College moved to its new location in Winston-Salem, NC Southeastern inherited the rest of the Wake Forest campus which covered five hundred acres and consisted of more than twelve major buildings. The number of faculty members and students grew and plans to remodel and renovate buildings were initiated. In 1957 Southeastern instituted a summer school session.

In 1958, the Seminary achieved recognition from the American Association of Theological Schools, now known as the Association of Theological Schools in the United States and Canada.

In 1963, after thirteen years of devoted service, Dr. Stealey retired and Dr. Olin T. Binkley was elected president. Enrollment stood at 575 and the school had 28 faculty members.

Under Dr. Binkley's leadership the Seminary continued the renovation program begun by Dr. Stealey. Four outdated buildings were removed, and thirteen new buildings were constructed and paid for—all during Dr. Binkley's eleven year administration.

Dr. Binkley also guided major academic changes: the general curriculum was revised; the Bachelor of Divinity degree became the Master of Divinity degree; the Master of Religious Education and the Doctor of Ministry degrees were implemented, bringing the total number of degree programs to seven. Furthermore, he inaugurated the annual Alumni Giving Program before his retirement in 1974.

Southeastern's third president, Dr. W. Randall Lolley, was elected in 1974. Enrollment had reached 663 with 24 elected faculty members. His leadership also effected remarkable progress for the Seminary in the areas of facilities, academics, and enrollment. The Certificate of Theology was restructured in 1976 and became the Associate of Divinity degree. In 1977, the Emery B. Denny Building which houses the Library was modernized and enlarged. And, in 1978, Southeastern received accreditation by the Southern Association of Colleges and Schools.

To meet the needs of an ever-increasing married student population, the Seminary constructed 100 townhouse-style apartments in 1979. Renovation of Lea Laboratory, now known as Broyhill Hall, was begun in 1980. In 1982, the ground floor of Binkley Chapel was transformed into classrooms.

The modernization of Adams Hall in 1984 provided the Seminary with more classrooms, seminar rooms, an auditorium, and a photography darkroom. The Ledford Center, a \$2.5 million complex completed in 1986, provided a gymnasium, snack bar, lounges, meeting rooms, book store, sauna and exercise rooms. Seminary enrollment peaked at 1,392 in 1983 with a faculty of 36.

Dr. Lolley resigned in the Fall of 1987 and was succeeded in 1988 by Dr. Lewis A. Drummond. The Drummond presidency marked a transitional era for Southeastern. Student enrollment declined and a major turnover occurred within the faculty. Nevertheless, Dr. Drummond led in an administrative restructuring of the Seminary in 1988 and in the establishment of the Center for Great Commission Studies in 1991. Reconstruction of the perimeter rock wall, replacement of the brick walkways, and a major refurbishment of administrative and faculty offices were also begun. Southeastern's commitment to Biblical inerrancy and to historic Baptist theological principles was made clear in new defining documents such as the Seminary's "Faculty Profile" and "Statement of Mission" in 1992.

For the academic year, 1990-1991, the enrollment stood at 784 with 27 elected faculty members. Dr. Drummond retired in the Spring of 1992.

Trustees elected Dr. Paige Patterson as the fifth President of the institution in 1992. Since Dr. Patterson's arrival, the Seminary's first fully endowed academic chair has been announced, the faculty has adopted a new curriculum that will provide Southeastern's students with the very best training possible, and there is a spirit of revival on the campus. The seminary's zeal for reaching the lost is exemplified by our evangelistic efforts in the Eastern region of the United States as well as in critical areas around the world. Student revival teams from the campus conduct services in churches ranging from Florida to Maryland. In addition to providing invaluable assistance to the local churches, this also provides for our student's practical ministry experience, which instills in each of them a heart for evangelism and church planting. Southeastern's enrollment approached 1,000 in the fall of 1994.

In the Fall of 1994 Southeastern Baptist Theological College was established by the Trustees of Southeastern Seminary. Classes in the Baccalaureate program began in January of 1995. The College offers the last two years of the Bachelor of Arts degree. In addition, the Associate of Divinity program was made part of the College curriculum.

Statement on Accreditation

Southeastern Baptist Theological Seminary is accredited by the Association of Theological Schools (ATS) in the United States and Canada. Southeastern Baptist Theological Seminary is also accredited by the Commission on Colleges of the Southern Association of Colleges and Schools (SACS) to award associate, bachelor, masters, and doctoral

degrees. The Seminary has been accredited by ATS since 1958 and by SACS since 1978. Southeastern Baptist Theological College is accredited by SACS through its relationship with Southeastern Baptist Theological Seminary.

Alterations

This catalog reflects the College policies as of the date of publication. However, Southeastern Baptist Theological College reserves the right to make such changes in educational and financial policy--due notice being given--as the Board of Trustees may deem consonant with sound academic and fiscal practice.

The College further reserves the right to request a student to withdraw at any time.

Faculty Profile

Elected members of the faculty at Southeastern Baptist Theological College serve the Christian community as ministers who are personally committed to the lordship of Jesus Christ in every area of life; they seek to obey Christ's command to love God with heart, soul, and mind; they are able and ready to testify of a personal experience of regenerating grace in their life; they affirm and maintain biblical standards of sexual morality; they defend and honor the biblical reverence for life; and they are dedicated to the task of equipping students for service through local churches, mission work, and other forms of Christian ministry.

Elected members of the faculty are Baptists in sympathy with the mission of the Southern Baptist Convention. During their time of service at Southeastern Baptist Theological College, they are active members of a cooperating Southern Baptist church; and they are personally committed to intentional evangelism, Christian social concerns and world missions.

Faculty members are expected to have a basic theological education and an earned research doctorate (such as the Th.D., Ph.D., or a degree with similar recognition) from an established institution of higher learning. Moreover, they are required to maintain an appropriate expertise in their teaching field.

They are competent teachers committed to the purpose and the mission of the College and to the historic evangelical Christian faith, while employing all useful methods of research and avenues of legitimate theological inquiry in the free pursuit of truth and knowledge.

They accept, affirm, and subscribe to the College's doctrinal "Abstract of Principles"; further they are guided doctrinally by the Baptist Faith and Message of 1963; they affirm and teach the Bible as the inspired and infallible Word of God, a perfect treasure of divine instruction, with God for its author, salvation for its end, and truth without any mixture of error for its matter, the true center of Christian union, and the supreme standard by which all human conduct, creeds, and religious opinions should be tried.

Academic Calendar for 1996-1997

Fall Semester 1996

- August 15-16
Faculty Workshop.
- August 19
Orientation: 8:00 a.m.-12:00 noon
Matriculation for new students:
1:00-7:00 p.m. Extension classes
begin, Session I.
- August 20
Classes begin.
Fall Convocation, 10:00 a.m.
- August 27
Last day for students to complete
work to remove incompletes for June
Term of summer school. Last day for
adding courses. Matriculation closes
at 5:00 p.m. Last day to notify
Registrar of desire to graduate in
December.
- September 2
Labor Day - Seminary closed.
Extension classes do not meet.
- September 10
Last day for dropping courses and
withdrawing from the Seminary
without academic penalty, 5:00 p.m.
- September 20
Last day for students to complete
work to remove incompletes for July
Term of summer school.
- September 24-25
Carver-Barnes Lectures.
- October 8-11
Fall Break.
- October 14-15
Fall meeting of the Board of Trustees.
- October 21
Extension classes begin, Session II.
- October 22-24
Sandy Creek Week.
- October 29
Faculty Lecture.
- October 30
Last day for submitting Th.M. theses
and D.Min. project reports for
graduation in the December 1996
commencement.
- November 1
Application deadline for Ph.D.
- November 26-29
Thanksgiving Recess.
- December 2
D.Min. project reports and Th.M.
theses to be submitted to the Library
for binding.
- December 3
Christmas Concert, 8:00 p.m.

- December 6
Last day of classes.
- December 9
Extension classes end.
- December 10-13
Exam Week.
- December 13
Semester Ends.
Graduation Rehearsal,
Binkley Chapel 3:00 p.m.
Graduation Banquet.
- December 14
Senior Breakfast. Commencement
Exercises, 10:30 a.m.

Spring Term 1997

- January 7-17
January Inter-term.
- January 13
Ph.D. Entrance Exams.
- January 13-17
D.Min. Intensive.
- January 20
Orientation: 8:00 a.m.-12:00 noon
Matriculation for new students:
1:00-7:00 p.m. Extension classes
begin, Session I.
- January 21
Classes begin. Spring Convocation,
10:00 a.m.
- January 28
Last day for adding courses.
Matriculation closes at 5:00 p.m.
Faculty Lecture - Gerald Cowen.
Last day to notify Registrar of desire
to graduate in May.
- February 3
Last day for students to complete work
to remove incompletes for Fall semester.
- February 11
Last day for dropping courses and
withdrawing from the Seminary
without academic penalty, 5:00 p.m.
- February 11-13
Theodore F. Adams Lectures on
Preaching and the Pastoral Ministry -
Chris Hancock.
- March 4-7
Spring Recess.
- March 10-11
Spring meeting of the Board of
Trustees
- March 27
Last day for submitting Th.M. theses
and D.Min. project reports for gradua-
tion in the May 1997 commencement.
- March 28
Good Friday - Offices closed, classes
meet.

- March 31
Extension Classes will not meet.
- April 1-4
Easter Recess
- April 8-10
Spring Conference
- April 9-10
Kendrick-Poerschke Lectures in
Christian Education
- April 25
D.Min. project reports and Th.M.
theses to be submitted to the Library
for binding.
- May 6
Spring Concert, 8:00 p.m.
- May 9
Last day of classes.
- May 12
Extension classes end.
- May 12-16
Exam Week.
- May 16
Semester ends.
Graduation Rehearsal,
Binkley Chapel 3:00 p.m.
- May 17
Senior Breakfast, Commencement
Exercises, 10:30 a.m.

Summer Terms 1997

- May 19-23
D.Min. Intensives.
- May 20-30
May Term - two week course.
- May 20-June 6
May Term - three week course.
- June 3
Application deadline for August
D.Min. admission.
- June 3-13
June I Term - two week course.
- June 3-20
June I Term - three week course.
- June 16-18
June II Term - Southern Baptist
Convention course.
- June 24-July 3
June III Term - two week course.
- July 4
Independence Day, Seminary closed.
- July 8-18
July I Term - two week course.
- July 22-August 1
July II Term - two week course.
- July 22 - August 8
July II Term - three week course.
- August 4-8
D.Min. Intensives.

Fall Semester 1997

August 14-15

Faculty Workshop.

August 18

Orientation 8:00 a.m. - 12:00 noon
Matriculation for new students 1:00 - 7:00 p.m. Extension classes begin, Session I.

Last day for students to complete work to remove incompletes for June Term of Summer School.

August 19

Classes begin.

Fall Convocation, 10:00 a.m.

August 26

Last day for adding courses. Matriculation closes at 5:00 p.m.

Last day to notify Registrar of desire to graduate in December.

September 1

Labor Day - Seminary closed.

Extension classes do not meet.

September 9

Last day for dropping courses and withdrawing from the Seminary without academic penalty 5:00 p.m.

September 13

Last day for students to complete work to remove incompletes for July Term of Summer School.

September 23-24

Page Lectures - Tom Oden.

October 7-10

Fall Break.

October 13-14

Fall meeting of the Board of Trustees.

October 14-16

Sandy Creek Week.

October 28

Faculty Lecture - Gary Galeotti.

November 1

Last day for submitting Th.M. theses and D.Min. project reports for graduation in the December 1997 commencement. Application deadline for Ph.D.

November 25-28

Thanksgiving Recess.

December 1

D.Min. project reports and Th.M. theses to be submitted to the Library for binding.

December 2

Christmas Concert, 8:00 p.m.

December 5

Last day of classes.

December 8

Extension Classes end.

December 8-12

Exam Week.

December 12

Semester ends.

Graduation Rehearsal,

Binkley Chapel 3:00 p.m.

Graduation Banquet

December 13

Senior Breakfast.

Commencement Exercises, 10:30 a.m.

December 15

Christmas Recess begins.

1996

1997

May							June							July							August									
S	M	T	W	T	F	S	S	M	T	W	T	F	S	S	M	T	W	T	F	S	S	M	T	W	T	F	S			
			1	2	3	4						1		1	2	3	4	5	6						1	2	3			
5	6	7	8	9	10	11	2	3	4	5	6	7	8	7	8	9	10	11	12	13	4	5	6	7	8	9	10			
12	13	14	15	16	17	18	9	10	11	12	13	14	15	14	15	16	17	18	19	20	11	12	13	14	15	16	17			
19	20	21	22	23	24	25	16	17	18	19	20	21	22	21	22	23	24	25	26	27	18	19	20	21	22	23	24			
26	27	28	29	30	31	23	24	25	26	27	28	29	28	29	30	31	25	26	27	28	29	30	31							
							30																							
September							October							November							December									
S	M	T	W	T	F	S	S	M	T	W	T	F	S	S	M	T	W	T	F	S	S	M	T	W	T	F	S			
1	2	3	4	5	6	7				1	2	3	4	5						1	2	1	2	3	4	5	6	7		
8	9	10	11	12	13	14	6	7	8	9	10	11	12	3	4	5	6	7	8	9	8	9	10	11	12	13	14			
15	16	17	18	19	20	21	13	14	15	16	17	18	19	10	11	12	13	14	15	16	15	16	17	18	19	20	21			
22	23	24	25	26	27	28	20	21	22	23	24	25	26	17	18	19	20	21	22	23	22	23	24	25	26	27	28			
29	30						27	28	29	30	31	24	25	26	27	28	29	30	29	30	31									
January							February							March							April									
S	M	T	W	T	F	S	S	M	T	W	T	F	S	S	M	T	W	T	F	S	S	M	T	W	T	F	S			
			1	2	3	4						1						1						1	2	3	4	5		
5	6	7	8	9	10	11	2	3	4	5	6	7	8	2	3	4	5	6	7	8	6	7	8	9	10	11	12			
12	13	14	15	16	17	18	9	10	11	12	13	14	15	9	10	11	12	13	14	15	13	14	15	16	17	18	19			
19	20	21	22	23	24	25	16	17	18	19	20	21	22	16	17	18	19	20	21	22	20	21	22	23	24	25	26			
26	27	28	29	30	31	23	24	25	26	27	28	23	24	25	26	27	28	29	27	28	29	30								
														30	31															
May							June							July							August									
S	M	T	W	T	F	S	S	M	T	W	T	F	S	S	M	T	W	T	F	S	S	M	T	W	T	F	S			
				1	2	3				1	2	3	4	5				1	2	3	4	5						1	2	
4	5	6	7	8	9	10	8	9	10	11	12	13	14	6	7	8	9	10	11	12	3	4	5	6	7	8	9			
11	12	13	14	15	16	17	15	16	17	18	19	20	21	13	14	15	16	17	18	19	10	11	12	13	14	15	16			
18	19	20	21	22	23	24	22	23	24	25	26	27	28	20	21	22	23	24	25	26	17	18	19	20	21	22	23			
25	26	27	28	29	30	31	29	30						27	28	29	30	31	24	25	26	27	28	29	30					
																					31									
September							October							November							December									
S	M	T	W	T	F	S	S	M	T	W	T	F	S	S	M	T	W	T	F	S	S	M	T	W	T	F	S			
1	2	3	4	5	6					1	2	3	4						1	1	2	3	4	5	6					
7	8	9	10	11	12	13	5	6	7	8	9	10	11	2	3	4	5	6	7	8	7	8	9	10	11	12	13			
14	15	16	17	18	19	20	12	13	14	15	16	17	18	11	10	11	12	13	14	15	14	15	16	17	18	19	20			
21	22	23	24	25	26	27	19	20	21	22	23	24	25	16	17	18	19	20	21	22	21	22	23	24	25	26	27			
28	29	30					26	27	28	29	30	31	23	24	25	26	27	28	29	28	29	30	31							

Admission Policy

Prerequisite to entrance into the bachelor's degree program at Southeastern Baptist Theological College is an Associate of Arts degree or a minimum of 58 hours from a regionally accredited college, Bible college, or university. Students transferring from unaccredited institutions will be considered for admission on a case by case basis. Credit from colleges and universities located outside the United States also will be considered on a case by case basis. All questions about admission policies or requirements should be directed to the Director of Admissions, SEBTC, Box 1889, Wake Forest, NC 27588.

Admission Procedures

Application for admission is made through the Admissions Office. The following items are to be filed before an application is acted upon by the Admissions Committee:

1. A completed application form and recent photo.
2. Three personal reference forms.
3. A nonrefundable application fee of \$25.00.
4. A completed medical information form and an immunization form.
5. Official transcript(s) sent directly to the Director of Admissions from the Registrar of schools previously attended.
6. A completed Church Recommendation Form.
7. Spouse's Personal Statement (if applicable).

Entrance Requirements

Admission to the B.A. program is limited to persons who have completed high school or its equivalency (as evidenced by scores on the G.E.D. test) and a minimum of 58 hours of baccalaureate credit. The applicant must also meet all other admission requirements for the Seminary.

Hours completed for entrance into the B.A. program must include at least 30 hours from the following areas:

- English Composition or Literature
- World or U.S. History
- Psychology or Sociology
- Science, Mathematics, or Computers

A minimum of six semester hours must come from each of the four areas of study.

Application Deadlines

Applications for the A.Div. and B.A. programs may be filed up to 12 months early but should be received in the Admissions Office at least 30 days prior to the matriculation day of the semester or summer term in which the student expects to begin. Housing requests are prioritized by the date of Admissions Committee action. Late applications may require delayed enrollment. Under no circumstances may a student be enrolled in classes until his/her application has been approved.

Admission Process

When the application materials are complete, they are reviewed by the Director of Admissions and members of a standing Admissions Committee of the Faculty. A **personal**

SEBTC-8

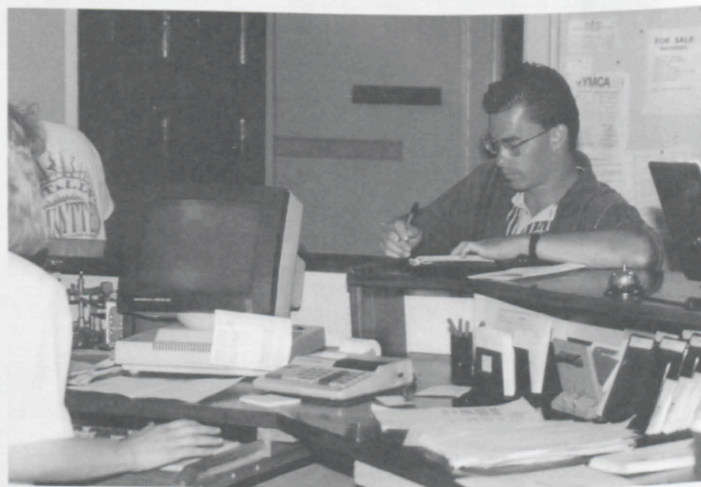
interview with the Admissions Committee may be required. Students may expect to be notified in writing of the decision of the Admissions Committee within 30 days after all their materials are on file in the Admissions Office.

Applicants who have completed as many as 40 semester hours toward a baccalaureate degree from an accredited college or university and who otherwise meet all admission requirements may be granted **conditional admission** by the Admissions Committee on the condition that they complete all basic education requirements. No more than 30 semester hours may be undertaken until the prerequisite courses have been completed. Under special circumstances, other conditions and/or restrictions may be applied. Details of any condition or restriction upon enrollment will be stated in the official letter of admission from the Dean of Undergraduate Studies.

Students applying for **Special Student** (non-degree) status may take up to 30 hours for credit. Contact the Admissions Office for further details.

International Student Admissions

The admissions procedure for international students requires additional information and processing time due to seminary policies and the requirements of the U.S. Immigration and Naturalization Service. International students are required to have a credit deposit in the business office to insure their financial security while studying at Southeastern. An international student admissions guide which provides details of these special requirements is available from the Admissions Office.



Pre-registration makes the enrollment process a breeze for the next semester's classes.

Fees and Expenses

Because the Southern Baptist Convention strongly supports theological education, gifts from the churches through the Convention's Cooperative Program provide the financial foundation for our students. In 1994-95, the Cooperative Program provided approximately \$5,200.00 per student. As a result, matriculation fees are significantly subsidized.

Schedule of Fees for 1996

Listed below are the fees applicable to students attending Southeastern Baptist Theological College. Expenses for food, insurance, travel, and personal needs are not included. Privileges for the use of the Library, Ledford Center, and recreation facilities, with the exception of the golf course, are included in the Student Services Fee. It is estimated that textbooks will cost approximately \$250.00 a semester. All student accounts, including the fees listed below, must be paid in full in order to register each semester. A student must take at least 12 hours to be considered a full-time student.

Matriculation

Southern Baptist students

Per hour	\$70.00
*Spouses of students	1/2 of the above

Non-Southern Baptist students

Per hour	\$140.00
*Spouses of students	1/2 of above

Student Services Fee per semester	\$50.00
Student Services Fee for student spouses	25.00
Student Services Fee Summer School.....	10.00 per term

Audit fee per class	\$25.00
Non-Refundable application fee	25.00
Late Matriculation Fee-Students who have not completed registration before classes begin	10.00
Add fee, each course	5.00
Drop fee, each course	5.00
Transcript fee (mail)	2.00
Transcript fee (FAX & mail)	5.00
Foreign Student Deposit— Single	\$4,900.00
— Married	\$6,900.00

Hospital Insurance

The Annuity Board Student Health Program is recommended to students who do not have comparable coverage.

Rents (1995-1996)

Dormitory room deposit	\$100.00
Apartment deposit	100.00

All rental fees are payable monthly in advance.

Men's Dormitory Housing (monthly rate)

Johnson Dormitory (utilities **included**)

Double, per person	125.00
Single	160.00

Women's Dormitory Housing (monthly rate)

Lolley Hall (utilities **included**)

Double, per person	125.00
Single	160.00

Apartments (for married students only)

Duplex Apartments (utilities **not included**)

One Bedroom (36 units)	285.00
Two Bedroom (30 units)	300.00
Three Bedroom (20 units)	310.00

Townhouse Apartments (utilities **not included**)

Two Bedroom (90 units)	320.00
Three Bedroom (10 units)	335.00

Simmons Apartments (**includes** heat only)

One Bedroom (2 units)	310.00
Two Bedroom (9 units)	335.00
Three Bedroom (4 units)	350.00

Apartments (for married students only - no children) (**includes** heat only)

Bostwick Apartments

One Bedroom (22 units)	335.00
------------------------------	--------

Diploma Fee

The diploma fee for all degrees is \$26.00. The diploma fee must be paid in the business office before the academic apparel can be picked up at the Baptist Book Store.

Academic Apparel

Orders for academic apparel (robes, caps and hoods), may be made at the campus Baptist Book Store during registration for the semester in which the student graduates.

Associate of Divinity	\$20.00
Bachelor of Arts	\$20.00

(add current sales tax to above fees)

Graduation

Applications for graduation in May must be turned in to the Registrar's Office before February 1. Applications for the December graduation must be in the Registrar's Office before October 1. Student accounts must be paid in full prior to graduation.

Refunds

Fees: A student who withdraws before the last day of the drop period may be refunded his/her total fees. Total fees constitute matriculation and student services fees.

Deposits: *Deposits made for reservation of rooms and apartments will be refunded only if cancellation is made ten days prior to the beginning of the term.* The deposit will be returned when the student releases the facility in good condition and returns the key to the Physical Plant. Deposits are applied to balance due on account before refunds are made.

Housing Regulations

The Seminary has dormitory space for 185 men and 52 women and apartments for 233 families. Many students live in parsonages furnished by the churches they serve. Housing is also available in the North Raleigh or Wake Forest area within easy driving distance to the campus. College students must apply for housing through the Seminary housing office.

Application

Applications for housing require deposits of \$100.00 for rooms and \$100.00 for apartments. Address applications to: Housing Office, Southeastern Seminary, P.O. Box 1889, Wake Forest, North Carolina 27588-1889. Costs of operation may necessitate changes in rent. Rooms or apartments reserved by deposit will not be held beyond the opening date of the term. All rent is payable monthly in advance.

Eligibility

Housing is available for students enrolled in the Associate (A.Div.) or Bachelor of Arts (B.A.) programs. Apartments are available to married students who are residing in Wake Forest with their families and are enrolled for at least 12 hours in a degree program. Students occupying seminary apartments are required to sign a lease agreement and housing regulations in the Housing Office. Students should read carefully and be acquainted with the terms of the lease agreement and any other applicable housing regulations. Failure to observe these regulations will disqualify the student/family for seminary housing. Please note that no pets are permitted in seminary housing.

Vacating

Students are required to vacate seminary housing within 30 days after completing class work for the A.Div. and B.A. degrees at the end of the fall and spring semester. Dormitory students who complete class work during summer school and who will not be enrolled in the fall semester, must vacate the dormitories during the weekend following the end of the second summer session. Students in seminary apartments who complete degree work in either summer session must vacate their apartments within one week after completing their degrees.

Dormitory Housing Statement of Policy

Southeastern Baptist Theological College is committed to providing adequate basic services for all of its students. As this commitment relates to housing, Southeastern seeks to make available on-campus housing at affordable rates.

Dormitory housing is provided primarily for single students and students who commute from other areas and need temporary housing during the week. Residents must be enrolled for at least nine (9) semester hours in a degree program.

Housing policies and regulations are devised to be consistent with the Seminary's commitment not only to its students but also to the Southern Baptist Convention and the people who support it. Their primary aim is to help maintain an atmosphere that promotes the welfare of the individual student, maintains a comfortable setting conducive to study and learning and provides as much privacy as possible in a shared environment.

All seminary housing residents are guided by specific policies and regulations. Regulations which define the use of dormitory facilities are somewhat restrictive, due primarily to the nature of dormitory housing in which residents must share accommodations, facilities and equipment. Since students are not required to live in seminary-owned housing, potential residents should read carefully the policies and regulations regarding their particular dormitory. Those who feel that these may be confining or inconsistent with their particular life-style are encouraged to seek other alternatives for housing.

At best, dormitory housing is temporary in nature and should not be equated with or expected to function as housing which is of a more permanent type.

The assignment of a dormitory room is not a commitment on the part of the College to the student for continuous occupancy of a particular room. At the discretion of the College, residence halls may be closed, or students may be required to make moves within dormitories.

In order that necessary maintenance and cleaning can be accomplished prior to the fall term, residents will be required to vacate their rooms during announced periods.

Room rent is due one month in advance, at the beginning of each calendar month. Residents are responsible for the rent until they have followed the proper procedure for checking out of the room and turning in the key.

Cafeteria

Meals in the cafeteria will cost approximately ten dollars per day, depending on individual requirements.

Student Financial Assistance

A student's preparation for entering the College should include a determination of personal financial needs and the provisions for meeting these. Southeastern Baptist Theological College believes that its students should, as much as possible, be self-supporting. However, it is recognized that some men and women who give promise of outstanding usefulness in Christian service may require assistance to complete their academic program.

Financial aid at Southeastern Baptist Theological College is administered through an assistance program which includes on-campus jobs, scholarships and emergency assistance through loans and grants. The dimensions of the program do not make it possible to provide for the total budget needs of students. Any assistance which can be provided is, therefore, supplemental to other income which the student may have. Funds for these programs are made possible primarily through the generous gifts of friends and alumni.

In the event that a student who received financial aid withdraws from school before a semester is completed, Southeastern Baptist Theological College may require that all scholarships be repaid to the foundations from which they were awarded. Upon withdrawal, the student's account will be charged the amount of the scholarship(s) and the foundations from which awards were given will be notified and refunded.

Possibilities of Self-Help

To facilitate adjustment to college life, it is recommended that entering students carefully anticipate fees, basic living expenses and moving costs and make provision in advance for meeting these financial obligations.

Church Work - The college encourages students to work in the churches as student pastors, assistant pastors, supply pastors, interim pastors, mission pastors, revival preachers, youth revival preachers, song leaders for congregations, directors of music, directors of religious education, directors of recreation, organists, pianists, and workers in church organizations. All students are urged to seek the counsel of the Formation in Ministry Office concerning such employment.

On the Campus - A limited number of work opportunities are available on campus, both for students and for spouses.

Employment for students is part-time in one of three categories: 1) work grants, on the basis of financial need and qualification for a particular job (information and applications can be obtained from the Dean of Students); 2) hourly employment in areas such as the Book Store, Cafeteria, Child Care Center, Public Relations, Library, Plant Services, Seminary Switchboard, and in some Administrative Offices (by application directly to these areas when vacancies are announced); and 3) graders (by invitation of faculty members).

Employment for spouses may be either full-time or part-time. Applications received in the Business Office are available to all Administrative Offices; however, applicants with skills and interests in specialized areas may also apply directly in those areas.

Wake Forest and other Communities - Students may secure remunerative work in Wake Forest and nearby cities and towns. Wake Forest is within 20 minutes driving distance of Raleigh and within 30 minutes of Durham. Many students and their spouses find employment in these centers.

In no instance can definite employment in the churches or in the adjacent communities be guaranteed by the College.

Student Aid

Student aid at Southeastern Baptist College begins with the commitment of the Southern Baptist Convention to theological education. This commitment is most evident in the generous funding of the seminary's entire operation. Gifts from churches and individuals given directly and through the Cooperative Program amount to an annual subsidy for each student of approximately \$5,200.00. The result is that basic fees are kept at a minimum.

Other types of aid are made possible through gifts and funds established by individual and corporate donors. These make it possible to provide work grants, loans, emergency grants and scholarships to qualified students.

Grants-in-aid and loans are available in small sums to meet urgent or emergency needs of students. Scholarships are awarded from available funds each semester after the last day to drop a class without academic penalty. Applications may be submitted a month in advance of this date. Applications for grants, loans and scholarships are reviewed and awarded by decision of the administrative Loan and Aid Committee. Information and applications may be obtained by writing the Dean of Students.

Southeastern Baptist Theological College does not participate in any federal or state funded student aid programs involving loans or grants. Prospective students should not anticipate such aid being available while enrolled at the college. However, Southeastern Baptist Theological College is approved to certify enrollment eligibility for repayment deferments for most federal or state education loans received in college. Students should contact their lending institutions for advice and information.

Veterans Benefits

The programs of education at Southeastern Baptist Theological College are approved by the North Carolina State Approving agency for the enrollment of persons eligible for

education assistance benefits from the U. S. Department of Veterans Affairs (VA). Entitled veterans, participants in the Montgomery G. I. Bill contribution programs, active duty military in voluntary education programs, drilling National Guard, drilling Reservists, and eligible spouses and offspring who have applied, met all admissions criteria, been fully accepted, and actively matriculated may be certified to the U. S. DVA Regional office as enrolled and in pursuit of an approved program of Education.

For information about monetary benefits contact the U. S. Department of Veterans Affairs Regional Office in Winston-Salem, NC. For information about the available programs at this institution contact the Campus Veterans Assistant Specialist.

Academic Load and Employment

When a student assumes responsibilities in addition to academic work, there is an ethical obligation to fulfill all these tasks in a satisfactory manner. **The Faculty recommends that a student with as many as 20 hours per week of secular employment or as many as two weekends per month of church-related responsibilities on a regular basis not register for more than 12 semester hours.** Any student who fails to maintain a "C" average will not be permitted to enroll for more than ten hours.

Special Scholarships and Aid Funds

Charles B. Keesee

Education Assistance Awards

The Charles B. Keesee Educational Fund, Inc. of Martinsville, Virginia, is a private foundation which offers financial assistance to qualified Southern Baptists who were residents of the states of Virginia or North Carolina prior to entering the Seminary or College and who are enrolled in a full-time basic degree program (M.A./C.E., M.A./C.M., or M.Div.). Applications may be secured from: Charles B. Keesee Educational Fund, Inc., P. O. Box 431, Martinsville, Virginia 24114. These must be returned to the Keesee Office by March 1 prior to the academic year for which assistance is requested.

Charles S. Coleman

Holy Land Study Tour Scholarships

Generous gifts of Charles S. Coleman, a layman and a 1976 graduate of Southeastern Seminary, have made scholarship help available to students for the seminary's Biblical Study Tour of the Holy Land, 1030 or Field Archaeology, 1040. These scholarships are open to second or third year students enrolled in the A.Div., B.A., M.Div., and M.A./C.E. degree programs at Southeastern Seminary.

William G. & Margaret B. Frasier

Scholarship Fund

This scholarship is available for North Carolina residents. The application must be accompanied with two letters of recommendation as well as a final transcript from the last attended institution. Deadline for application is June 30 for the upcoming academic year.

State Baptist Convention Scholarships

Many of the Baptist State Conventions have established funds through which residents from their state who attend seminary or college can receive grants. Information regarding whether state seminary grants can be obtained through state convention offices. The Financial Aid Office at Southeastern has limited information on the particulars of each state but may be of assistance in helping locate the proper state agency with whom to make contact.

Miscellaneous Scholarships

From time to time, the Financial Aid Office will receive information about scholarship funds that are being made available to students. The information is made available to students via the NewsLine and through notices on campus bulletin boards. Students may inquire in the Financial Aid Office about scholarship information.

General Scholarships

Southeastern has several very generous donors who have established funds that are allotted for scholarship and loan purposes. Each semester the Financial Aid Office is able to provide scholarships from these funds to our students who demonstrate a financial need and a desire to continue their academic pursuits. Applications may be requested in the Financial Aid Office and must be turned in no later than the last day to drop without academic penalty. Scholarships are awarded within the week after all registration is completely closed.

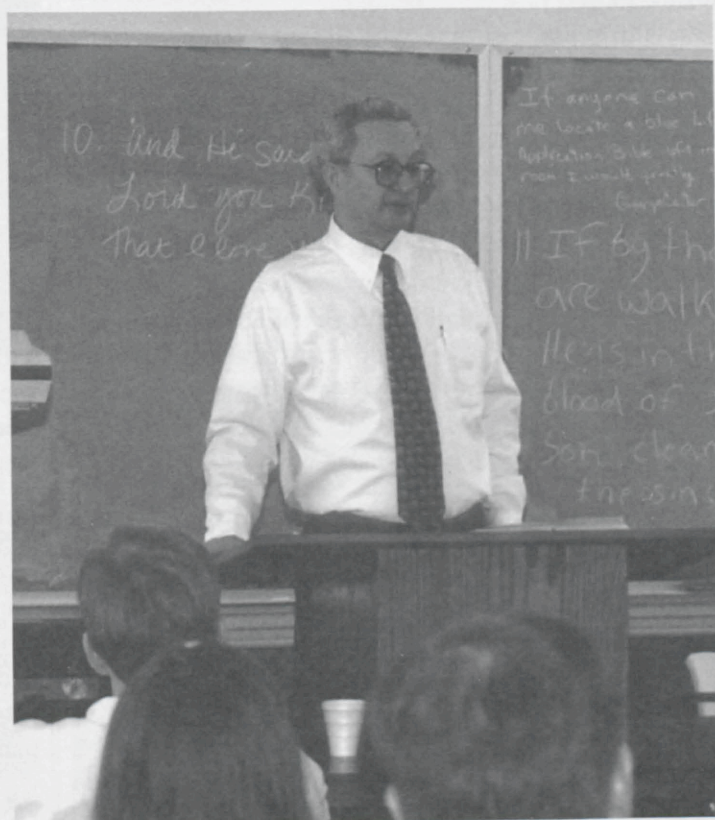
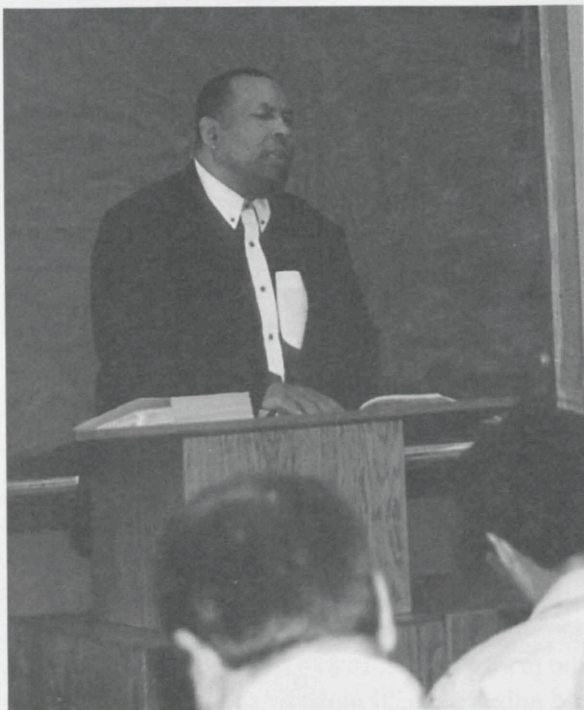
Alumni Association

The Alumni Association of Southeastern Baptist Theological Seminary is composed of all graduates and former students of Southeastern Seminary and Southeastern Baptist Theological College. It endeavors to perpetuate friendships formed in the College or Seminary and to foster the cause of theological education in general and specifically at Southeastern. Its purpose is "to provide a mutually helpful relationship for the glory of God by interrelating effectively and efficiently the alumni with the College or Seminary and with each other through fellowship, communication and service." With its December commencement in 1995, Southeastern has granted 2 Bachelor of Arts in Biblical Studies, 969 Associate of Divinity, 6,082 Master of Divinity, 318 Master of Religious Education and Master of Arts in Christian Education, 25 Master of Arts in Church Music, 325 Master of Theology and 437 Doctor of Ministry degrees. The number of degrees granted totals 8,158, which includes multiple degrees received by the same person.

The Association meets annually during the Southern Baptist Convention. The officers, with the presidents of the state chapters, comprise the General Board. State Chapters of the Alumni Association are active in the following states: Florida, Georgia, Maryland, North Carolina, South Carolina, and Virginia. These meet at least once a year, concurrent with the meetings of their respective Baptist State Conventions.

The National Alumni officers for 1995-1996:

President	Dr. Johnny Hunt	'83 Woodstock, GA
President Elect	Rev. Julian Motley	'63 Wake Forest, NC
Secretary/Treas.	Rev. Jerry P. Pereira	'81 Black Mountain, NC
Chairman of Executive Comm.	Rev. Larry Burns	'93 Kings Mountain, NC



Drs. Logan Carson (above) and Gerald Cowen (right) open the Word of God to students not only drawing upon rich academic and ministerial experience, but, more importantly, upon their understanding of God and His Word that can only come through a deep and abiding relationship with Him.

Campus and Facilities

Even though Southeastern Baptist Theological Seminary has a history covering less than five decades, the campus has a heritage spanning more than 150 years. In 1832, the Baptists of North Carolina purchased the 615 acre plantation of Dr. Calvin Jones for the purpose of establishing a teaching facility for young ministers.

The institution they established became Wake Forest College and in 1950, more than a century later, the Wake Forest campus was purchased by the Southern Baptist Convention as the home of Southeastern Baptist Theological Seminary.

Southeastern's campus is noted for its splendid natural beauty as well as its graceful classic Georgian architecture. The grounds are rich with magnolias, elms, pines, oaks, cedars, firs, maples, and other varieties of trees. There is also an abundance of azaleas, camellias, sasanquas, dogwoods, and flowering fruit trees.

As a result, the campus offers resplendent views all year around, but especially in fall and spring. Many of the trees were growing on the land even before the plantation and are centuries old. Several massive white oaks, part of a magnificent grove near the plantation house, still stand on the Southeastern campus. In fact, this grove was called Wake Forest and gave the town its name.

Another historic landmark, the stone wall now surrounding the central campus, was begun about 1885 by Wake Forest College president Charles E. Taylor and "Dr. Tom" Jeffries. The wall was rebuilt by Doug Buttram, a Southeastern graduate, during 1990-1994.

Over the years, Southeastern has complemented the natural setting with dogwoods, hollies, and an array of flowers. The original Wake Forest College buildings have been renovated, and new ones have been added. Yet, with each change, the goal has been to maintain the character of the original campus and land. Today Southeastern's campus comprises a full range of excellent facilities for living and learning.

The idea of a Prayer Garden was begun by students in the Class of 1983 with a graduation gift of \$546.00 and has been expanded as funds have become available. In 1991, an anonymous donor gave a gift of the gazebo which is placed in the center of the garden as a formal place of quiet prayer. The Prayer Garden's landscaping design is based on the classical gardens of peace and solitude found throughout the Orient. The Prayer Garden and gazebo are located at the southwest corner of the campus between Lolley Dorm, the Shaw House and Mackie Hall.

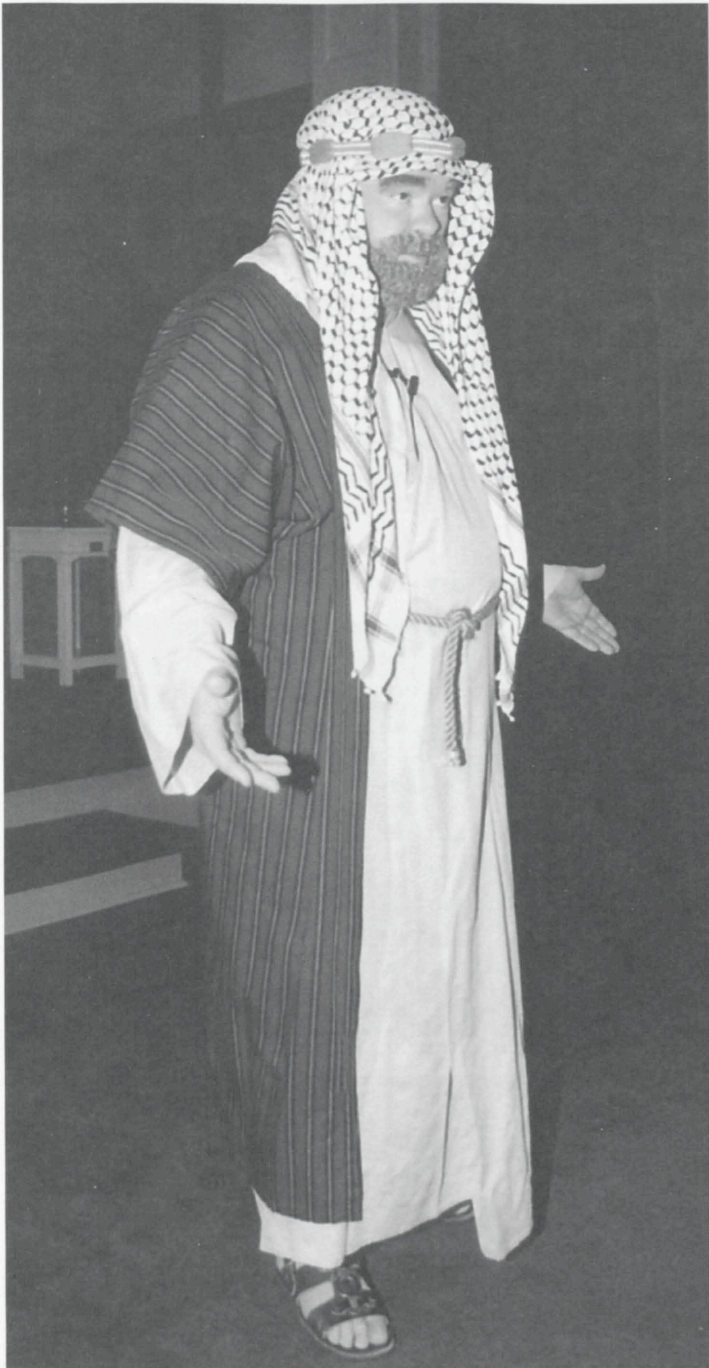
Stealey Hall was built by Wake Forest College in 1934. It replaced the Old College Building, later named Wait Hall, which had been destroyed by fire in 1933. In 1956 it was completely renovated for offices of the administration and faculty. It was renamed in 1961 in honor of the seminary's first president, Dr. S. L. Stealey.

Adams Hall, erected in 1933, first housed the Wake Forest Medical School (now the Bowman Gray School of Medicine). Renovated in 1956, it has served as a classroom building for the Seminary. In 1984 it underwent a complete modernization, with additional stairwells, an elevator, air-conditioning and other modern conveniences. In the fall of 1984 it was dedicated to the memory of the late Theodore F. Adams. In January 1995 it became the home of Southeastern Baptist Theological College.

Mackie Hall was dedicated on May 9, 1968, as the seminary's new student center. It is named in memory of Dr. George C. Mackie, "a distinguished physician" who "devoted his life to the well-being of students" at Wake Forest College and at Southeastern Seminary, and in honor of Mrs. Mackie who as "a creative leader" has participated in the beautification of the campus. Mackie Hall is temporarily being used by the Wake Forest Boys and Girls Club. In the future, it may be converted into a faculty office center.

Broyhill Hall is the oldest building on Southeastern's campus and is listed in the National Register of Historic Buildings. Built in 1888 as Lea Laboratory, it served Wake Forest College as a science building and then as the chemistry building. After the college moved, it was converted into a student center for the Seminary. In 1980 it was extensively renovated and renamed Broyhill Hall in appreciation of the generous gifts of J. E. and Paul Broyhill, trustees from Lenoir, North Carolina. It now houses various faculty offices and The Great Commission Center.

Binkley Chapel commands the center of the campus. Its tall spire is visible for several miles along every approach to Wake Forest. Work was begun on the chapel in 1942, but World War II prevented the completion of the interior. When the college moved to Winston-Salem in 1956, the work was resumed and completed in 1958. In 1959, a three-manual Reuter organ was given and installed as a memorial to Walter M. Williams of Burlington, North Carolina. In 1969, the Board of Trustees named the chapel in honor of the seminary's second president, Dr. Olin T. Binkley. The ground floor of the chapel was redesigned in 1982 and furnished as five modern classrooms and church music facilities, including organ and piano practice areas. In 1987, the chapel organ was renovated and enlarged to 70 ranks by the Schantz Organ Company, Orrville, Ohio.



Joseph of Nazareth made an unexpected visit during a fall chapel service and shared his story of the birth of Jesus.

The Emory B. Denny Building was constructed by the Seminary in 1958 to replace the old Heck-Williams Building (1878) which was razed in 1957. In 1969, the Board of Trustees named it in honor of Dr. Emery B. Denny, former Chief Justice of the Supreme Court of North Carolina, a trustee of the Seminary and its longtime friend and supporter. It houses the Seminary library.

The seminary library is dynamically involved with faculty and students in the achievement of educational objectives. It provides resources and services to support the research and study of the faculty and to meet the needs of students for the free and independent study which is stimulated by classroom, chapel, and other components of student life

situations. Provided also is a broad range of materials for the general educational, cultural, and recreational interests of students, faculty, and their families.

A major building project, completed in 1977, has transformed the Library's Emery B. Denny Building into a modern facility, enlarged by fifty percent and redesigned functionally. Individual study-carrels and materials on open shelves are dispersed throughout the carpeted, air-conditioned building. Audiovisual facilities, microform readers and printers, a computer lab, typing rooms, group-study rooms, and photocopying equipment are also provided. In this setting, personal service is emphasized by a staff of seven full-time and twenty part-time persons.

The Library's collection has grown to more than 250,000 items including books, periodical volumes, music scores, music recordings and audiovisual materials, microforms, computer software, and Baptist documents. Currently received periodicals total over 1,100 titles. The microforms, containing approximately 95,000+ volumes of books, periodicals, and dissertations, make this young library's collection strong in Early American and Early British materials, including important Baptist history resources. The collection is adequate to serve the Seminary's programs of study.

The resources and services of the Library are augmented greatly by the proximity of excellent university libraries and by an increase in both the scope and degree of cooperation with these libraries and others throughout the nation. As a charter member of the Southeastern Library Network (SO-LINET), the Library is using a shared computer facility by means of an on-line computer terminal. The Library also participates in the North Carolina Information Network.

In addition to funds allocated to the Seminary by the Southern Baptist Convention, the Library benefits from the generosity of many individuals and organizations. Each year, a number of cash gifts are received for the purchase of books. Eighty-four gifts, each of one thousand dollars or more, are providing endowment income for "memorial book shelves." Several gifts of private book collections have added significantly to the Library's strength.



Research is made much easier and effective by this years computerization in the Library.

The Ruby Reid Child Care Center was made possible by a bequest of Miss Ruby Reid of Wake Forest, North Carolina, and gifts from the Baptist Sunday School Board and the Z. Smith Reynolds Foundation. It was constructed in 1959. Five spacious classrooms, equipped with observation booths, open onto covered porches and fenced-in playgrounds. An office, teachers' lounge and a multipurpose library/lunchroom add to the usefulness of the building.

The Seminary Cafeteria was built by the Seminary in 1956 and provides dining rooms for conferences and small groups as well as facilities for large banquets and regular meals.

The Ledford Center/Cannon Gymnasium is an expansion of the Gore Gymnasium which was first dedicated by Wake Forest College in 1938. Renovations and additions to the original building in 1986 provide a comprehensive activities facility containing over 50,000 square feet. The three-floor complex includes a multiuse gymnasium, fully equipped fitness facility, racquetball courts, and locker/dressing rooms for women and men. In addition, there are lounges, a post office, recreation room, sandwich shop and campus bookstore. Offices for administrators and student organizations plus conference rooms are also included. The center is named in honor of Mr. and Mrs. Hubert F. Ledford of Raleigh, North Carolina. The gymnasium area has been named for the late Charles Cannon and the Cannon Trusts.

The Health Center was constructed by the Seminary in 1968 and contains offices for diagnostic consultation and treatment.

Wake Forest Baptist Church, organized in 1835, occupies the church building (1913) within the rock wall enclosure.

Appleby Hall was begun by Wake Forest College in 1942 and completed during World War II. From 1951 to 1956, this building housed the new Seminary. It was remodeled, and in 1962, renamed in honor of Mr. Scott B. Appleby in recognition of his generous support of the student aid fund. It contains a small chapel, classrooms, offices and a fellowship room, named in memory of Dr. and Mrs. Percy A. Bethea. Refurbishment in 1981 made it a beautiful and even more useful building.

Magnolia Hill is the home of the President. Built in 1928 as the residence of the president of Wake Forest College, the edifice is located off the southwest corner of the campus. It was renovated and refurnished in 1975 and again in 1989. The house is the heart of SEBTS hospitality.

Purchased in 1960, the **Manor Guest House**, near the main campus, provides pleasant accommodations for prospective students and other guests.

The seminary has set aside three apartments for the use of missionaries on furlough who wish to study at Southeastern Seminary. The Woman's Missionary Union of North Carolina, with the assistance of the WMUs of neighboring Baptist churches, has furnished these apartments located on Hipps Drive.

Hockaday House is a completely furnished guest apartment for seminary visitors. It is named for the late Dennis W. Hockaday of Savannah, Georgia.

Reece House is a completely furnished guest apartment for seminary visitors. It is named for the late James Thaddeus and Nina Davis Reece of Yadkinville, North Carolina.

The Athletic Field is located near the campus and is utilized for recreational activities such as softball, baseball, flag-football and soccer. Five tennis courts are provided.

The Physical Plant is located on the northern perimeter of the campus. It houses the heating plant, administrative offices and the air conditioning, electrical, plumbing, carpentry, paint, grounds, and environmental services shops. Campus security is also housed in this building.

Housing

Johnson Dormitory provides air-conditioned rooms and facilities for 180 men with lounge areas and other conveniences. The availability of single rooms is determined each semester by the total number of requests for rooms. This three-story building, constructed in 1946 in separate sections for quiet and privacy, offers pleasant living conditions for its occupants.

Shaw House, located next to the main campus, has rooms for eight persons, and is currently used as a residence for commuter students. The former town residence also contains an area lounge and kitchen facilities.

Lolley Hall, formerly known as the Women's Dormitory, was renamed and dedicated in 1988 in honor of Dr. & Mrs. Randall Lolley in recognition of his 14 years of service to Southeastern as its third president. Constructed in 1965, Lolley Hall provides air-conditioned rooms for 50 women. It contains 13 two-room suites with connecting baths, and has parlors, study rooms, a kitchenette, laundry space, recreation and game rooms.

Simmons Dormitory, built in 1936, and recently renovated, provides apartments for families with two or more children. There are four apartments with three bedrooms and 12 apartments with two bedrooms. Apartments have washer and dryer connections.

The Duplex Apartments, built from 1959 to 1975, can accommodate 100 families. There are one-, two- and three-bedroom units, each with living room, kitchen and bath. Each apartment has its own central air conditioning and heating system, light and water system. The occupant is responsible for all utilities. These apartments are unfurnished, except for stoves and refrigerators which are permanent installations. Located on West Pine Avenue, Rankin Court, Judson Drive, Rice Circle, Stadium Road, Wingate Street and Hipps Drive, they are within easy walking distance of the main campus. Apartments have washer and dryer connections.

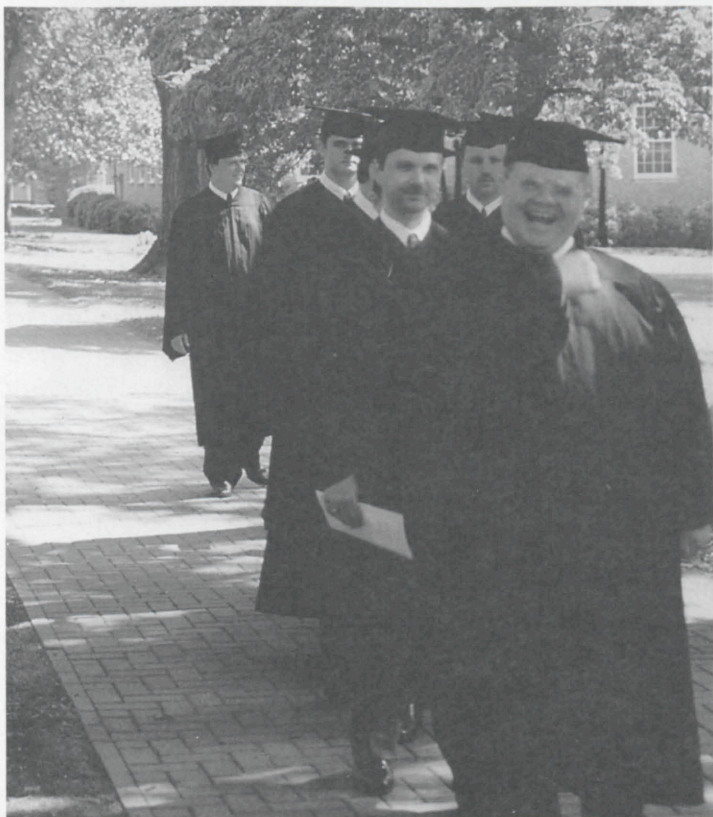
The Townhouse Apartments, built in 1979, can accommodate 100 families. There are two- and three-bedroom

units, each with living room and kitchen-dinette area. Living room, bedrooms, and stairways are carpeted. Kitchen and bathrooms have vinyl tile. Each apartment has a central air-conditioning and heating system. Occupant is responsible for utilities. These apartments are unfurnished, except for stoves and refrigerators which are permanent installations. Apartments have washer and dryer connections. These are located on McDowell Drive, they are less than a mile from the campus.

Bostwick Hall, built in 1924, has been renovated into a 25-unit married housing complex for couples without children.

All but three of the apartments include a bedroom, living room, bathroom and kitchen. The other three apartments have larger bedrooms but no living room. All of the units have approximately 600 square feet.

The bedrooms and living rooms are carpeted, while the kitchen and bathroom are vinyl. Renovations included installing a laundry room and lounge area in the basement, as well as lounge areas on the second and third floor. It is located at the corner of Wingate Street and Stadium Drive on the main campus.



Above left: During New Student Orientation, students have an opportunity to meet new friends and faculty that will impact their lives for years to come.

Left and above: Graduation is both a joyous and somber occasion as the toils of the past two years draw to a close and God opens the challenge of new ministry opportunities to the graduate.

College Community Life

The College seeks to develop the whole person through numerous opportunities both on and off campus. Organizations, special events, and campus facilities present a versatile mix of activities.

The Ledford Center, the heart of extracurricular campus life, complements the challenges of academic life. The center offers a multi-use gymnasium, fitness rooms, racquetball courts, recreation room, and lounges. Tennis courts and a nine-hole golf course are also situated near the campus.

The town of Wake Forest offers public parks, swimming pools, and summer recreation programs. The larger community, encompassing Raleigh and the Research Triangle, offers a year-round variety of cultural, leisure, athletic, and educational options.

Worship

As Binkley Chapel is the center of the campus, so worship is the center of college life. Under the leadership of the president, professors, students and guest speakers, chapel services are held at 10 a.m. each Tuesday, Wednesday, and Thursday while classes are in session. On selected days, missionary speakers, scholars, and other Christian leaders inspire the entire community with special lectures and addresses.

Opportunities for Ministry

Many Southeastern Baptist Theological College students find remunerative employment in the churches within a 200 mile radius of the College. Although the Field Ministries Office offers assistance to every student who wishes the opportunity for ministry, it cannot guarantee a position to any student.

Southeastern Baptist Theological College students minister in hospitals, prisons, shopping centers, rest homes, campgrounds, schools, churches, colleges and other institutions, and in other areas of special need. During the summer, many students serve as pastor-assistants, retreat chaplains, evangelists, youth directors, chaplain interns at hospitals, missionaries, and special urban workers.

Student Spouses

Student spouses may enroll in college or seminary classes for a reduced fee; special night classes or lectures are arranged for their convenience. Spouses also may take part in such campus organizations as the Seminary Choir and the Women's Fellowship. They are included in campus social functions and various special interest activities.

Spouses seeking employment have a wide choice of possibilities in the area. Nurses readily find work in nearby hospitals. The scope and variety of industries, businesses, educational institutions, and public service agencies in Wake Forest, Raleigh, and the surrounding area offer excellent job opportunities.

On-campus positions are also available. The college and seminary employ a number of secretaries, telephone operators, and other skilled persons.

Children of Students

Children of college students are recognized as important members of the College community and, therefore, benefit from various campus resources. Modern housing affords them comfortable living quarters, while recreational facilities offer diverse opportunities. At the Health Center, the services of the school physician are also available free of charge. Churches and public schools are within walking distance of campus.

Ruby Reid Child Care Center

The Ruby Reid Child Care Center serves the Seminary family by caring for children ages two through five. The Center is open year-round, except for one week in August and one week during the Christmas season. Seminary students may enroll their children for the periods when school is in session. They may also request interim care between semesters. Part-time care is available when space permits.

In addition to providing a Christian daycare environment for children, the center has three special purposes: to provide a laboratory for teachers and students who desire to explore ways of working with children; to provide a setting in which parents may discover new ways to enrich their family living; to provide a facility through which staff members of churches and other agencies involved with child care may receive counsel related to improving their own programs.

Enrollment for each age group is limited. *Registration begins in April for the following fall. For more information, contact the Director of the Child Care Center. It is strongly advised that incoming students place their child's name on the waiting list as soon as possible. Students and spouses may also seek full-time or part-time employment at the Center.*

Health Center

During sessions, the Seminary operates an on-campus Health Center directed by an on-staff physician. Students and their families may use the physician's services without charge during regular office hours. Residence calls are subject to charge by the physician.

Students may purchase general medicines and certain medical supplies through the Health Center as prescribed by the campus physician. All medicines must be paid for at the time they are issued. New students can visit the Health Center to complete their immunization as required by the State of North Carolina.

Baptist Book Store

The Baptist Book Store, located in The Ledford Center, is operated by the Sunday School Board of the Southern Baptist Convention. It carries the required textbooks and supplies for classes as well as a variety of other books and personal accessories. The bookstore is also open to the public.

Student Council

The Student Council, composed of representatives elected by students, assists the faculty and administration in coordinating various campus activities and in promoting the general welfare of all students. The various aspects of campus life that concern the council are reflected in the titles of its committees: arts, spiritual life, ethics, off-campus ministries, social, student welfare and communications.

Organizations

Habitat of Wake Forest is an organization to provide support in the form of people, resources, promotion, and other appropriate means for Habitat for Humanity (International, National, and Local Affiliates). Its purpose is to be a conduit for support from individual students and student organizations, faculty, and staff of our school, and to be able to share the Habitat program with local church congregations.

Peer Support Groups are an integral part of the orientation of new students to the campus. Groups, led by selected students, provide support and information to facilitate adjustment to college life.

Southeastern Women's Fellowship is an organization for student wives and women students. It seeks to respond to specific needs of college and seminary women through special events, family recreation, missions awareness, personal growth opportunities and preparation for ministry.

State Organizations are composed of students from the same state. They promote fellowship and provide a setting for sharing mutual concerns and interests. They include: Alabama, Florida, Georgia, Mississippi, South Carolina, Tennessee and Virginia.

World Missions Fellowship seeks to heighten the awareness of the need for missions through prayer, fellowship and opportunities to confront issues related to personal and corporate missions commitment.

Opportunities in Music

Seminary Choir rehearses on Tuesdays from 7 to 9 p.m. Many couples make this choir a family affair. Spouses are

encouraged to sing in this group without audition or fee. The Chapel Choir rehearses two hours per week, and performs weekly in Chapel, singing a wide variety of anthem and cantata literature. The Male Chorale is an auditioned ensemble of 16 men. This ensemble sings for chapel and off-campus events. Private voice and organ lessons are offered at modest fees. An Instrumental Ensemble and Handbell Ensemble offer additional opportunities for musical expression

Special Days and Lectures

The regular curriculum of the College is enlarged and enriched by guest-lecturers, visiting preachers and special speakers. These sermons, lectures and addresses are given in Binkley Chapel at 10:00 a.m. on designated days and are open to the general public.

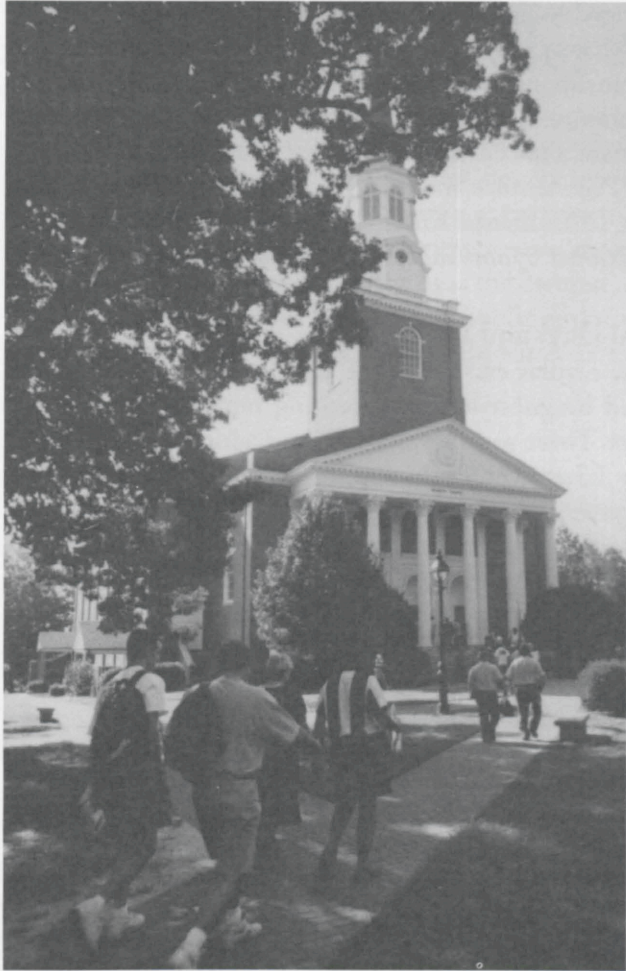
The Theodore F. Adams Lectures on Preaching and the Pastoral Ministry were established in 1976. These lectures, given in the spring semester, honor the contribution to Christian ministry of Theodore F. Adams (1898-1980) who taught at Southeastern Seminary from 1968-1978. These lectures are funded from the income on a corpus given by friends of Dr. Adams.

The Carver-Barnes Lectures were established in 1961. These lectures, given in the fall semester, honor W.O. Carver (1868-1954), and W. W. Barnes (1883-1960) for their outstanding contributions to theological education. These lectures address the history and the mission of the Church, and are funded in part by the income from a gift of Mr. and Mrs. Harold C. Fechner of Lee's Summit, Missouri and Mr. and Mrs. W. Lee Beaver of Chesterfield, Missouri.

The Page Lectures were established in 1979. These lectures, given in the fall semester, address a variety of subjects of interest to the college and seminary community. They are funded from the income on a gift of Mr. and Mrs. George A. Page of Plainfield, Indiana.



Brian Teeter is awarded The Associate Excellence Award by Academic Vice President Russ Bush. This award is presented annually to a graduating senior in the Associate Class who has excelled in scholarship, leadership, spirituality, and promise of ministry.



Above: The Chapel services offer spiritual encouragement and instruction to the seminary family and visitors from the community.

Upper right: Southeastern Trustees cherish the opportunity to join students in praising God.

Middle right: Chapel Services at Southeastern are often joined by special guests such as Presidential candidate Alan Keyes and President of the Sunday School Board Jimmy Draper.

Lower right: The Instrumental Ensemble provides an opportunity for students to use their musical talents in a variety of settings



The Kendrick-Poerschke Lectures in Christian Education were established in 1983. These lectures, in even-numbered years in the spring semester, address the educational dimension of Christian Ministry in the Church. They are funded from the income on a fund begun in 1973 by Robert and Katherine Poerschke of Wake Forest, North Carolina, to honor their parents, Mary Kemnitz and Ernst Johann Poerschke, and Martha Bryant and John Wesley Kendrick.

Spring Lectures alternating with the Kendrick-Poerschke Lectures, bring scholars to the campus to lecture on a variety of subjects relating to theology and the practice of ministry.

Commencements Prominent speakers participate in both the winter and spring commencements.

Convocations The fall convocation address is usually given by the President, and the spring convocation address is delivered by a faculty member.

Faculty Lectures Each fall and spring a member of the seminary's faculty gives a public lecture.

Founders' Day is observed by an address by a prominent denominational leader.

Missionary Day is observed twice annually, emphasizing missions through home and foreign missionaries and other persons who address and meet with students.

Conferences

Esther Jillson Adams Seminars were established to provide special programs, seminars and enrichment events each year in order to emphasize the role of student ministers' wives and to encourage their personal spiritual growth. These seminars are planned and directed by the Southeastern Seminary Women's Club, Southeastern Women's Fellowship, and the Dean of Students.

Chaplains' Conference is sponsored annually in cooperation with the Home Mission Board of the Southern Baptist Convention and is open to military, institutional and industrial chaplains and those interested in these areas of service.

The Pastors' Seminar is held in conjunction with the Theodore F. Adams Lectures and affords alumni and other friends a week of study, fellowship and recreation.

The Spring Conference is sponsored annually in cooperation with the Sunday School Board of the Southern Baptist Convention. Activities are planned and directed by a student steering committee in consultation with a professor of Christian Education and are open to all members of the College and Seminary family and visitors.

In addition, special conferences on campus will be available both to members of the Seminary community as well as to members of local churches. The Lewis Addison Drummond Center for Great Commission Studies sponsors special conferences, and the Seminary's Continuing Education program also sponsors events open to the Seminary community.

Publications

NewsLine is a weekly circular announcing campus activities and events and is published by the Public Relations Office for campus distribution.

Catalog contains information on the educational policies and programs of the College. It is published by the Public Relations Office and is available upon request from the Registrar.

The Directory is a pictorial handbook of students, faculty members and administrative personnel, with addresses, telephone numbers and other biographical information. It is a publication of the Public Relations Office.

Faith and Mission is a scholarly journal published twice a year by the faculty of Southeastern. As an aid to persons engaged in Christian ministry, the journal features articles dealing with current theological and biblical issues as well as book reviews related to the field of Christian thought and practice.

International Student Handbook is published annually by the Dean of Students Office to assist international students in their orientation and adjustment to American culture and in maintaining their visa status.

Student Handbook, a publication of the Dean of Students Office, is designed primarily for the benefit of entering students and contains information pertinent for their orientation.

Outlook (Southeastern Seminary Bulletin) is a quarterly, general interest magazine, published by the Public Relations Office. Upon request, copies are sent gratis to alumni, trustee and other friends of the Seminary and College.



Praise and Worship is at the heart of the Southeastern campus experience.

Academic Policies and Procedures

Southeastern Baptist Theological College offers two degree programs: Associate of Divinity, and Bachelor of Arts. Descriptions of these programs of study and a summary of academic policies appear on the following pages.

Doctrinal Guidelines

Each elected member of the faculty at Southeastern Baptist Theological College has subscribed to and publicly signed the College Articles of Faith (known as *The Abstract of Principles*) at the beginning of his or her teaching career at the College. Southeastern Baptist Theological College is also guided doctrinally by the *Baptist Faith and Message Statement* adopted by the Southern Baptist Convention in 1963.

Academic Regulations

The Dean of the College administers the academic policies and procedures of the College. These academic regulations are established by the Faculty of the College under the authority of the Board of Trustees. *Southeastern Baptist Theological College reserves the right to make changes in academic policies and requirements as needed.* Questions concerning the current status of all academic matters should be addressed to the Registrar. Generally speaking, students will follow the degree requirements as outlined in the catalog under which they entered the College. Students may take advantage of any improvements that appear in later catalogs while they are enrolled. A student who withdraws from enrollment for two academic years will reenter under the catalog current at that time.

Annual Certification of Church Membership

The purpose of Southeastern Baptist Theological College is to train men and women for ministry. The role of the local church is important in this training and nurturing endeavor.

Each student, no matter what degree plan, is required to furnish an annual certification from his/her local church.

If possible, students are encouraged to be in staff positions. When this is not feasible, the student should be the type of member that the church would desire of a staff member/minister.

The Annual Church Certification forms are mailed in mid-September to all enrolled students who are not graduating, and must be returned and filed in the Registrar's Office by December 1 or a student will not be able to re-enroll for the Spring semester. Due to the matriculation subsidy from the Cooperative Program, the forms must be from a Southern Baptist Church if the student is paying Southern Baptist matriculation fees. Special instructions regarding the forms and church membership are as follows:

If you are a:

- *Church Member or Church Staff* - the form should be completed by the pastor after congregational action as certified by the church clerk.

- *Southern Baptist Pastor* - the form should be completed by the deacon chairman after congregational action as certified by the clerk.
- *Non-Southern Baptist Student* - you must pay non-Southern Baptist fees. This form should be completed by appropriate church officials at the church where your membership and attendance is recognized.

Changes in Registration

After registration, any changes in a student's enrollment must be arranged through the Registrar's Office. No changes are permitted in enrollment or academic status after stated deadlines except by permission of the Dean of the College.

Attendance

Class attendance is considered an important part of the learning process. Regular class attendance is expected and students are responsible for the mastery of materials required for credit. The individual instructor is responsible for his/her attendance policy.

Inclement Weather

Seminary classes will always meet! In an event so unusual that cancellation of classes is necessitated, an announcement will be made on Radio WPTF, 680 AM. The switchboard will also be open during regular hours and will have the latest information. On days when Wake County Schools publicly announce that they are closed or delayed or released early due to inclement weather or similar circumstances, no student will be penalized for failure to attend class during the time period specified. No one is expected to subject his or her life to any unusual danger in order to travel on days when weather is a problem, nor should small children be left unattended. Nevertheless, seminary classes will meet at all scheduled times. The Ruby Reid Child Care Center will not close due to weather but will be open for the children at all times as stated in their official schedules.

Student Records

Southeastern Baptist Theological College follows the Seminary's guidelines for maintaining and granting access to student records in keeping with the Family Educational Rights and Privacy Act of 1974. Personal records, including transcripts, are not released or shown to any outside party except by the written consent of the student. Southeastern Baptist Theological College maintains in a permanent file the student's application, health records, church endorsements, transcripts, and personal and academic records that

may be accumulated during student days, including a notice of any official disciplinary action that may be taken against the student. Access to these files by College personnel is allowed under the supervision of the Dean of the College on a need to know basis for honors evaluation, routine processing, academic concerns, and to fulfill necessary administrative tasks. Student records are otherwise held in confidence.

A student has the right, with administrative staff present, to view records kept in his or her permanent file but is not allowed to alter them in any way except by the addition of written and signed correctives. Failure to provide truthful and/or accurate information on applications, church endorsements, or on other permanent records provided by the student may be grounds for dismissal.

Directory information published by the College is in the public domain. Questions regarding directory information should be directed to the Public Relations Office. Questions regarding permanent student records should be directed to the Registrar.

Academic Load

An average academic load of 16 hours per semester enables the B.A. degree to be earned in 4 semesters and 16 hours per semester allows the Associate of Divinity degree to be earned in 4 semesters. Students are expected to give priority to the program of study in which they have enrolled. **Extracurricular responsibilities require a corresponding reduction in the student's academic load.** The Faculty recommends that a student employed in church work for as many as two weekends per month on a regular basis, or who works for as many as 20 hours per week, should not register for more than 12 credit hours per semester.

The Faculty has set the maximum academic load as 16 semester hours. Necessary exceptions may be approved by the Dean of the College but are discouraged.

In order to be eligible for residence in college and seminary housing, students must enroll for a minimum of 12 semester hours. Enrollment is not required in the Summer Terms, but all students are strongly urged to take Summer courses in order to reduce their required academic load during the regular semesters.

Student Classification

A **Senior** is a student who has 32 or less semester hours remaining toward his or her degree. A **Junior** is a student who has earned 64 or more hours toward his or her degree.

Transfer of Credits

Credits earned at other schools and applied toward the B.A. program at Southeastern Baptist Theological College are subject to certain conditions: the credits must be appropriate to the B.A. degree program at Southeastern Baptist Theological College, and awarded by an accredited school. Normally, no grade lower than a "C" may be transferred. Stu-

dents transferring credits to Southeastern Baptist Theological College must maintain a "C" average on courses taken at Southeastern Baptist Theological College in order to graduate.

Persons seeking to transfer to Southeastern Baptist Theological College must make application through the normal channels of admission. The Registrar upon request evaluates the official transcript and informs the student of the credit that will be transferred.

Transfer students in the B.A. program must take a minimum of 32 hours at Southeastern in order to graduate from Southeastern Baptist Theological College and at least 26 hours must be taken on the main campus in Wake Forest. Not more than 12 of the 32 hours may be taken in Summer Practicums, individualized studies, and similar special classes. Details of all transfer policies are available from the Registrar.

General education courses may be taken at other accredited colleges and applied to the A.Div. program by transfer. However, since the A.Div. is a specialized professional degree, no more than 15 hours of the Foundational or Vocational Electives may be transferred from comparable work at another accredited institution. No hours will be transferred from unaccredited programs.

Academic Probation

Any student who fails to maintain a "C" average will be placed on Academic Restriction. Students on Academic Restriction will be limited to no more than ten semester hours in the succeeding semester. If the student on Academic Restriction fails to achieve a "C" average during the semester, the student will be placed on Academic Probation. A student on Academic Probation must earn at least a "C" average during that semester or that student will be suspended from the College. Students who have been suspended for academic reasons will not be considered for readmission until the student gives adequate evidence of having made changes in his or her situation so as to justify readmission. Students readmitted after academic suspension will automatically be on Academic Probation during the first semester.

Evaluation and Grading

The critical assessment of mastery in a given subject is an important ingredient in learning. The following table presents the meaning of grading symbols as they are employed at Southeastern Baptist Theological College.

Grading Symbols

A - The "A" grade is interpreted to mean that the instructor recognizes exceptional capacities and exceptional performance.
B - The "B" grade signifies that the student has demonstrated a significantly more effective command of the material than is generally required in that course.

C - The "C" grade is the instructor's certification that the student has demonstrated the required mastery of the material.

D - The "D" grade signifies that the student's grasp of the

course is minimal, but the instructor believes the student would not profit materially by repeating the course.

F - The "F" grade indicates failure to master the essentials and the necessity for repeating the course before credit may be allowed.

I - Incomplete. In extraordinary circumstances, which prevent a student from completing the requirements of a course on time, the instructor will assign the letter "I". The student must complete the work of that course as quickly as possible and, in no case, later than the end of the eighth week following the end of the course. If the grades on incomplete work have not been submitted to the Registrar by ten weeks after the end of the course, the Registrar is instructed by the faculty to record the grade of "F" and to notify the teacher.

E - Conditioned. The professor may give this grade in continuing courses to a student who has not met the minimum requirements but shows promise of sufficient improvement in the second semester to be given a permanent grade of "D". A grade not less than "C" must be earned the following semester; otherwise, the grade of "E" becomes "F".

W - In exceptional cases of authorized withdrawal after the drop deadline, if the instructor has no data for evaluation, the grade of "W" will be submitted. Otherwise, the faculty member will be requested to submit a grade of "WP" (withdrew passing) or "WF" (withdrew failing) depending on the student's status at the time of withdrawal. (**See Adding, Dropping, and Withdrawing from Courses.**)

TR - Transfer. NG - No grade given.

Quality Points

Quality points are awarded on the following basis: One point is awarded for each semester hour earned with the grade "D". Two points are awarded for each semester hour earned with the grade "C". Three points are awarded for each semester hour earned with the grade "B". Four points are awarded for each semester hour earned with the grade "A". No points are given for the grade "F".

Progress Reports

Records of progress are maintained by the College on all students. Progress reports consisting of class grades for the semester and overall quality point averages are furnished to students after the end of each scheduled school term.

Adding, Dropping, and Withdrawing from Courses

Altering a course load by adding or dropping courses prior to the deadlines is a formal procedure initiated in the Registrar's Office. The last date for adding classes is one week after the beginning of a semester. The last date for dropping courses without academic penalty is three weeks after the beginning of a semester. See the **Academic Calendar** for these dates. A fee is charged for each course dropped or added. See the **Schedule of Fees**.

Because a generous "Drop Period" is provided during which students can evaluate their work load and other circumstances and withdraw from any course without academic penalty, permission to withdraw from a course after the deadline stated in the **Academic Calendar** may be granted only by the Dean of the College and only under extraordinary circumstances. An application form for permission to withdraw is available in the Dean's office and the application requires a personal conference with the professor before it can be considered by the Dean. After the deadline, drops are not allowed unless external circumstances that were not present prior to the "Drop Deadline" and are completely beyond the control of the student occur that prevent class attendance and/or completion of class assignments. Poor grades, heavy work load, church responsibilities, or other personal and/or family difficulties are not accepted as reasons for withdrawal from a class after the calendar deadline. Students who cannot complete their class work due to hardship should consider the option of receiving the grade "I" or in extreme cases applying for withdrawal from enrollment rather than from an individual course. Withdrawal from enrollment is initiated in the Registrar's office and must be done in person, if at all possible. Successful withdrawal from enrollment establishes an appropriate file that permits readmission (see below). In all cases, the instructor will determine whether the grade W, WP or WF is applicable and will submit this grade to the Registrar at the end of the semester.

Withdrawal from Enrollment

In order to withdraw from enrollment, students must consult the Registrar's office, confer with the Dean of the College, obtain certain required signatures, surrender identification cards, return all materials on loan to the Library, and clear their accounts with the Business Office. A withdrawal procedure form is available in the Registrar's office.

Students who have not completed requirements for a degree and who do not plan to enroll for the following term are required to withdraw from enrollment through the withdrawal procedure initiated in the Registrar's office. Students who follow the approved procedure for withdrawal will have their admission status maintained for one year and may register for classes during any regular registration period during that year. **If a student does not register for courses during the year following official withdrawal, he or she will be required to apply for readmission through the Registrar's office. After two years from the date of withdrawal, students are required to reapply through the Admissions Office and are required to reenter under the catalog in effect at that time.**

Graduation

It is the responsibility of the student to check his or her record in the Registrar's Office to determine if qualifications for graduation have been accomplished or can be scheduled.

This degree check should be made no later than the pre-registration period for the semester prior to the semester in which graduation is planned. This will allow the student two full semesters to complete courses required for graduation in a specific degree program. **Students who qualify to graduate must complete a Graduation Application and complete a Graduation Check in the Registrar's Office no later than pre-registration for their last semester.**

Students are required to be present at graduation exercises in order to receive their diplomas. They are excused from attendance only by written permission of the Dean of the College. Written requests specifying the unusual circumstances leading to such a request to graduate in absentia must be submitted by the student to the Dean's Office no later than **three weeks** prior to the date on which they are scheduled to graduate.

Summer School

Southeastern Baptist Theological College offers certain classes between the Spring and Fall semesters on various schedules. Such classes help students to maximize their study opportunities. Students planning to enter Southeastern Baptist Theological College for the first time in the Summer should submit their completed applications no later than 30 days prior to the beginning of the term in which they desire to enter. For further information write the Director of Admissions, Southeastern Baptist Theological College, Box 1889, Wake Forest, North Carolina 27588-1889.

Short Term Courses

Courses may be offered in short-term sessions during January, May, or during Summer months. Students may enroll in only one course during each short-term.

Faith & Mission

Southeastern's faculty produces *Faith & Mission*, a biannual theological journal that concentrates on the application of Christian faith to Christian missions and ministry. Though the editorial board is made up exclusively of Seminary faculty members, the journal often publishes articles written by significant scholars and Christian leaders from around the world. For subscriptions, contact: *Faith & Mission*, P.O. Box 1889, Wake Forest, NC 27588-1889.

Fletcher Professorship of Missions

Since 1979 the A.J. Fletcher Foundation of Raleigh, North Carolina has sponsored an annual professorship of missions in honor of James Floyd Fletcher, a pioneer in the field of home missions work. The generous support from the Foundation has allowed the Seminary and College to supplement their worldwide mission emphasis by bringing active, furloughing, or recently retired missionaries or mission board employees to the campus for short term and/or full semester classroom settings. Courses offered are in the field of mis-

sions and count as regular elective credit in the various academic degree programs of the seminary and college. While internationally based missionaries are highlighted occasionally, the emphasis of the Fletcher program is on home mission work. Missionary administrators and strategists, ethnic leaders, area directors of missions, and field workers in social and evangelistic ministries have been an added dimension to campus life through this program. Students are able to interact with those who have hands-on experience in mission work. Special on-campus mission emphases are also encouraged and supported through this program. Materials giving more details of the program including biographical information on the Reverend James Floyd Fletcher, "the Mountain Missionary," and his wife, Louisa Barker Fletcher, are available through the office of the Vice President for Academic Affairs.

The Lewis Addison Drummond Center for Great Commission Studies

The Center for Great Commission Studies was inaugurated in a special convocation service April 14, 1991. The center seeks to train those interested in Evangelism, Cross-Cultural Missions, Church Growth, Church Planting and Spiritual Awakening. The Center focuses on the study of the theology and methods by which Christians intentionally spread their faith. It functions within the existing programs and publicly stated purpose of the Seminary. In March of 1992, the Board of Trustees voted to change the name of the Center to The Lewis Addison Drummond Center for Great Commission Studies, in honor of the fourth President of the Seminary.

The Center is assigned six primary tasks:

1. To strengthen the teaching of missions and evangelism.
2. To promote academic and field-based research into missions and evangelism.
3. To equip men and women for specialized ministries in missions and evangelism.
4. To provide continuing education in missions and evangelism for seminary graduates.
5. To offer specialized conferences and study opportunities in missions and evangelism for congregational leaders.
6. To involve faculty and students in special off-campus endeavors in missions and evangelism.

Although the Center is operated by the Seminary, College students may take part in its mission programs.

Degree Programs

Associate of Divinity

Many men and women who are 30 years of age or more and who have not completed the college work that is a prerequisite for the Seminary's Master of Divinity program are called by God into full-time Christian service. Sometimes this divine calling comes to an individual after a career in the military or in some other profession. A balanced program of study in the biblical, historical, theological, and ministry areas is offered to these students at the college level and leads to the Associate of Divinity degree.

The Associate of Divinity is a professional degree program which is designed to equip these students with basic knowledge, skills, and attitudes which will enable them to serve effectively as pastors, bi-vocational ministers, or in other forms of ministry. The curriculum recognizes the student's maturity and previous work experience.

The Associate of Divinity curriculum is composed of courses similar to those in the Master of Divinity curriculum but the course requirements may be different. The program is designed to be completed in two years of full-time attendance.

Entrance Requirements

Admission to the Associate of Divinity program is limited to persons who have completed high school or its equivalency as evidenced by scores on the G.E.D. test. Students must be 30 years of age or older. An exception to the age requirement may be granted in the case of applicants who are the spouses of students enrolled in a degree program of the Seminary or College. Other general admission requirements also apply.

Degree Requirements

In order to be eligible for the degree, Associate of Divinity, the student must complete the noncredit library workshop and earn 64 hours of credit, including 15 hours of general education courses and 27 hours of foundational level courses. The student must maintain a minimum cumulative quality point average of "C" (2.0) in order to graduate from Southeastern Baptist Theological College. A maximum of 15 hours of the foundational and vocational courses may be transferred from other accredited colleges.

General Education Courses	15 hours
English Grammar, Composition, or Literature	6
History	3
Psychology, Sociology, Philosophy, or Economics	3
Science, Mathematics, or Computer Science	3
Foundational Studies	27 hours
Introduction to the Old Testament	3
O.T. Elective: Pentateuch, The Wisdom Literature, or the Major Prophets	3
Introduction to the New Testament	3
N.T. Elective: The Life of Christ, Early Pauline Epistles, Later Pauline Epistles, or Hebrews and General Epistles	3
Church History	6
Baptist History and Distinctives	3
Christian Doctrine	6
Vocational and Elective Studies	22 hours
Total	64 hours

Suggested Sequence of Courses

First Year			
	Fall		Spring
Old Testament Introduction	3	New Testament Introduction	3
English Grammar	3	English Composition	3
Introduction to Psychology	3	Old Testament Elective	3
Western Civilization	3	Baptist History and Distinctives	3
Electives	4	Electives	4
	16		16
Second Year			
	Fall		Spring
Church History I	3	Science or Computer	3
Christian Doctrine I	3	Christian Doctrine II	3
New Testament Elective	3	Church History II	3
Electives	7	Electives	7
	16		16

Bachelor of Arts

The Bachelor of Arts is a two year (64 semester hours) program with a major in Biblical Studies. As a prerequisite to admission into the program, basic education courses must be taken in an accredited baccalaureate program and applied to the B.A. degree by transfer.

The purpose of this program is to equip students with basic knowledge, skills, and attitudes which will enable them to serve effectively as pastors, bi-vocational ministers, or in other forms of ministry, usually in a local church. In addition, it is intended to prepare the student for more advanced study in a seminary Master's program.

Entrance Requirements

To be admitted to this program a student must have completed an Associate of Arts degree or a minimum of 58 semester hours in an accredited associate or baccalaureate program. All other college admission requirements must also be completed. Students with at least 40 hours completed may be granted conditional admission.

Associate of Divinity graduates of Southeastern Baptist Theological Seminary or Southeastern Baptist Theological College who have completed the additional requirements for the B.A. degree may transfer the 58 required hours from an accredited institution and apply for the B.A. degree. However, these hours must be completed within five years of their completion of courses at SEBTC.

Degree Requirements

In order to be eligible for the B.A. degree, the student must earn 128 semester hours of credit, with a cumulative average of "C". A maximum of 70 hours may be completed at SEBTC toward the B.A. and a minimum of 32 hours must be completed at SEBTC in order to qualify for graduation.

Bachelor of Arts majoring in Biblical Studies

Foundational Studies 46 hours

New Testament Introduction	3
Old Testament Introduction	3
Christian Doctrine I & II	6
New Testament Greek I & II	8
Sermon Preparation and Delivery	6
Hermeneutics	2
Church History I & II	6
Baptist History and Distinctives	3
Personal Evangelism	3
Introduction to Missions	3
Christian Growth and Discipleship	3

Bible Electives 12 hours

Old Testament Electives	5
New Testament Electives	5
Elective	2

Non-Bible Electives 6 hours

Total 64 hours

Suggested Sequence of Courses

First Year

Fall	Spring
Old Testament Introduction	New Testament Introduction
English Composition	English Literature
Introduction to Psychology	Old Testament Elective
Western Civilization	Baptist History and Distinctives
Electives	Electives
16	16

Second Year

Fall	Spring
Church History I	Science, Math, or Computers
Christian Doctrine I	Christian Doctrine II
New Testament Elective	Church History II
Electives	Electives
16	16

Course Descriptions

The courses listed on the following pages appear on the semester schedules with varying frequency. Required courses are offered annually. Elective courses may be offered annually or on two, three, or four-year cycles. The class schedule for any given semester is made available through the Registrar's Office.

General Studies

GS 101 English Grammar 3 Hours

A comprehensive review of English grammar designed to identify and explain significant features of English grammar.

GS 102 English Composition 3 Hours

A study of English style and usage as utilized in written expression. Prerequisite: GS 101

GS 103 Introduction to Psychology 3 Hours

An introduction to psychology as a science with special emphasis on the integration of psychology with biblical truth. The origins, assumptions, techniques, instruments, and methods of psychology will be studied and related to Scripture.

GS 105 Library Resources Non-Credit

An intensive, eight-hour workshop to help A.Div students gain the knowledge and skills needed to use the library effectively. Demonstrations and guided research experience provided. Required for all A.Div. students.

GS 106 History of Western Civilization 3 Hours

A study of significant developments in western civilizations from the classical era to the present. Emphasis will be on selected personalities and intellectual, political, religious and social trends, interpreted within the conceptual framework of a Christian philosophy.

GS 201 Natural Science 3 Hours

A survey of the structure and function of the heavens and earth through the sciences of astronomy, chemistry, physics, geology, and biology. Scientific vocabulary and basic math skills will be reviewed and utilized within the course structure. Also, student forums will be conducted in the areas of the interface between science and Scripture.

GS 203 Introduction to Computers 3 Hours

This course covers basic computer history, theory, and applications, including word processing and the basic operating system.

Biblical Studies

BI 100 Biblical Orientation 2 Hours

A study of the historical, geographical, chronological, linguistic, and cultural setting of the Bible in the Ancient Near East as seen through the results of archaeological excavation.

BI 102 Biblical Geography and Archaeology .. 2 Hours

A survey of the geography of the Holy Land and of the important archaeological discoveries which illuminate biblical history and interpretation.

BI 201 Hermeneutics 2 Hours

An introduction to the basic principles of Biblical interpretation and hermeneutical procedures.

BI 301 Biblical Study Tour 3 Hours

A guided study tour of Palestine with emphasis upon historical, geographical and archaeological orientation on the various sites.

BI 401 Field Archaeology 4 Hours

Field experience in the scientific techniques of modern archaeological methods. Sites in the Middle East and tiguous areas of the biblical world will constitute the laboratory for the field work. Summer.

Old Testament

OT 101 Old Testament Introduction 3 Hours

An introduction to the historical background of the Old Testament with a brief survey of its literature.

OT 102 Pentateuch 3 Hours

Study of the first five books of the Bible. Attention to the divine purpose for the Hebrew nation in the redemptive scheme of the Bible. Prerequisite: OT 101

OT 201 The Wisdom Literature 3 Hours

Historical and exegetical study of poetic books and wisdom literature of the Old Testament. Prerequisite: OT 101

OT 202 The Major Prophets 3 Hours

An exegetical and theological study of selected passages from the Major Prophets using the English text. Prerequisite: OT 101



Dr. Gary Galeotti's Old Testament classes are as spiritually vibrant as they are academically challenging.

OT 301-408 Exegesis 2 or 3 Hours
Intensive study of specific Old Testament books based on the English text. Areas of study will vary from year to year.
Prerequisites: OT 101 and either OT 102, OT 201 or 202

- OT 301 Genesis 3 hours
- OT 302 Exodus 2 hours
- OT 303 Leviticus-Deuteronomy 3 hours
- OT 304 Joshua-Judges-Ruth 3 hours
- OT 305 Samuel-Kings-Chronicles 3 hours
- OT 306 Ezra-Nehemiah-Esther 2 hours
- OT 307 Job 2 hours
- OT 401 Psalms 3 hours
- OT 402 Proverbs 2 hours
- OT 403 Ecclesiastes-Song of Solomon 2 hours
- OT 404 Isaiah 3 hours
- OT 405 Jeremiah-Lamentations 3 hours
- OT 406 Ezekiel 2 hours
- OT 407 Daniel 2 hours
- OT 408 Hosea-Malachi 3 hours

OT 411 Old Testament Theology 2 Hours
An examination of the Old Testament as to its theological content with special attention to its scope and unity.
Prerequisites: OT 101 and either OT 102, 201, or 202

Biblical Hebrew

HB 301 Old Testament Hebrew 4 Hours
An introduction to the fundamentals of classical Hebrew with primary emphasis on the strong verb and basic vocabulary.

HB 302 Old Testament Hebrew 4 Hours
A continuation of HB 301 with emphasis on the weak verb and reading from the biblical text.
Prerequisite: HB 301

New Testament

NT 101 New Testament Introduction 3 Hours
An introduction to the historical background of the New Testament with a brief survey of its literature.

T 201 Early Pauline Epistles 3 Hours
Historical and exegetical study of Paul's epistles to the Thessalonians, Corinthians and Romans.
Prerequisite: NT 101

NT 203 Later Pauline Epistles 3 Hours
Historical and exegetical study of Galatians, Paul's prison and pastoral epistles.
Prerequisite: NT 101

NT 204 Hebrews and General Epistles 3 Hours
Historical and exegetical study of Hebrews and the general epistles.
Prerequisite: NT 101

NT 301 Life and Teaching of Christ 3 Hours
Study of life and teachings of Christ as presented in the four gospels. Prerequisite: NT 101

NT 302-407 New Testament Exegesis 2 or 3 Hours
Intensive study of specific New Testament books based on the English text. Areas of study will vary from year to year.
Prerequisite: NT 101

- NT 302 Matthew 3 hours
- NT 303 Mark 2 hours
- NT 304 Luke 3 hours
- NT 305 John 3 hours
- NT 306 Acts 3 hours
- NT 307 Romans 3 hours
- NT 308 I Corinthians 3 hours
- NT 309 II Corinthians 2 hours
- NT 401 Galatians-Ephesians 2 hours
- NT 402 Philippians-Colossians-Philemon 2 hours
- NT 403 I and II Thessalonians 2 hours
- NT 404 I and II Timothy-Titus 2 hours
- NT 405 Hebrews 3 hours
- NT 406 I and II Peter-Jude 2 hours
- NT 407 I, II, III John-James 2 hours
- NT 408 Revelation 3 hours

NT 413 New Testament Theology 3 Hours
A study of the theological message of the early Christian community as expressed in the New Testament documents.
Prerequisites: At least 6 hours in N.T. completed.

NT 423 New Testament Eschatology 3 Hours
Study of the eschatological teachings of the New Testament, special attention given to the book of Revelation.
Prerequisite: At least 6 hours in N.T. completed.

Greek

GR 201 New Testament Greek I 4 Hours
An introduction to the basic grammar of New Testament Greek.

GR 202 New Testament Greek II 4 Hours
A continuation of grammatical studies together with beginning readings in the Greek New Testament.
Prerequisite: GR 201

GR 301 Intermediate Greek 3 Hours
Translation of portions of the Greek New Testament with some attention given to methods of exegesis. Application of grammar principles and stress on facility in translation.
Prerequisite: GR 201, GR 202

Theological Studies

TH 301 Christian Doctrine I 3 Hours
A study of the major doctrines of the Christian faith. The nature of theology, its methods and claims are discussed and assessed. The doctrines of revelation, God, creation and providence are examined.

TH 302 Christian Doctrine II 3 Hours

An examination of the doctrines of man, the person and work of Christ, the church and the Christian life, and the Christian hope.

TH 401 Revelation 3 Hours

A study of the Christian doctrine of Revelation as found in Scripture. Special study will involve the student in the various views of inspiration and authority promulgated throughout Christian history. Prerequisites: TH 301 and TH 302.

TH 402 Christology 3 Hours

A study in the Biblical and historical interpretations of the person of Jesus Christ and His atoning work on the cross. Prerequisite: TH 301 and TH 302.

TH 403 Eschatology 3 Hours

The Christian doctrine of last things considered from the perspectives of biblical, historical and systematic theology. The course will examine various eschatological systems and will treat such issues as the Christian hope (this-worldly and other-worldly), death, resurrection, parousia, the last judgment and final destiny. Prerequisites: TH 301 and TH 302

Christian Ethics

ET 301 Christian Ethics 3 Hours

A survey of biblical ethics with special attention given to their application to the contemporary scene.

ET 401 Current Issues in Christian Ethics 2 Hours

Intensive study and research of one or more moral issues which are of immediate concern to the Church, society and Christian ethicists. Prerequisite: ET 401.

Philosophy

PH 201 Introduction to Philosophy 3 Hours

Includes a brief survey of the history of philosophy and defends the validity of the logical and epistemological foundations of Christian theology and ethics against critical systems.

PH 301 Philosophy of Religion 2 Hours

An introductory study of the basic traditional issues in the area of Philosophy of Religion, including the nature of religion, the relation of philosophy to theology, the existence of God, faith and reason, science and the problem of evil.

PH 401 Seminar in Christian Apologetics 2 Hours

A study of the history of Christian Apologetics and the development of world-views.

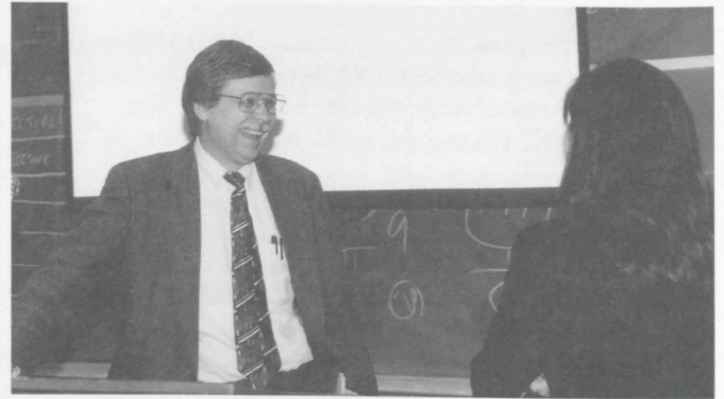
Historical Studies

HS 301 Church History I 3 Hours

A survey of the history of Christianity from apostolic times through the Reformation.

HS 302 Church History II 3 hours

A survey of the history of Christianity from the Reformation to the present, including Baptist origins and development.



Student's appreciation for their religious heritage is deepened by the teaching of Dr. David Puckett.

HS 303 Baptist History and Distinctives 3 Hours

A study of Baptist origins, development, principles, leaders, and thought. Special attention is given to the distinctive contributions of Baptists.

HS 304 The Southern Baptist Convention 2 Hours

This course is designed as a series of lectures, discussions, and on-site examination. Students will meet for two days, travel to the Convention, observe what occurs, and, upon their return, prepare a paper analyzing the yearly meeting from a practical and theological standpoint.

HS 401 The Reformation 3 Hours

An historical and critical study of selected aspects of the Protestant Reformation. Prerequisite: HS 301

Missions

MS 301 Introduction to Missions 3 Hours

A study of Christian Missions including the Biblical motivation, historical advance, and basic philosophy. Special attention is given to contemporary issues and methods in missions.

MS 302 The History of Missions 2 Hours

An inquiry into the development of Christian missions with special emphasis on the development of modern missions beginning with William Carey.

MS 305 Current Topics in Home Missions 2 Hours

An intensive study of selected current issues in missions within the United States. Topics and professors will be announced. (May be taken more than once for credit.)

MS 401 Christian Faith and World Religions . 3 Hours

An examination of contemporary world religions from the standpoint of the Christian faith, including Hinduism, Buddhism, Judaism, Islam, and Tribal religions.

MS 405 Practicum in Church Planting 4 Hours

A combination of academic study and field missionary experience conducted in selected settings under approved supervision, in cooperation with the Home Mission Board of the Southern Baptist Convention and/or Baptist State Conventions and local churches.

Studies In Ministry

MN 100 College Choir 1 Hour

In concert each semester, the College choir presents either a major work or selections from the masterpieces of choral music. May be taken two years for a total of 4 hours credit applicable toward graduation requirements or may be taken without credit.

MN 201 Introduction to Church Music 2 Hours

A survey course covering the use of music in worship, Christian hymnody, and church music administration, designed primarily for students interested in the pastoral ministry.

MN 202 Chapel Choir 1 Hour

A mixed ensemble open to all. The music will consist of anthems and shorter works from all style periods with weekly participation in chapel.

MN 203 Male Chorale 1 Hour

The male chorale, a men's ensemble open to all, performs a wide variety of sacred music in chapel and occasionally in local churches.

MN 205 Handbell Choir 1 Hour

Practical experience in handbell-ringing with the possibility of occasional performance in chapel or recital.

MN 207 Instrumental Ensemble 1 Hour

An ensemble designed to provide an opportunity for college students to utilize instrumental skills.

MN 301 Supervised Ministry 3 Hours

Ministry in an appropriate field setting with a competent supervisor. Cognitive and affective learning experiences are designed to foster the student's competence in ministry.

MN 302 Pastoral Ministry 2 Hours

A study of the multiple ministries of the modern pastor, including planning a preaching program, filling the pastoral role of the congregation, planning services and activities, and relating his ministry to the community and denomination.

MN 305 Marriage and Family 2 Hours

A study of the family as a biblical and social institution. Relevant insights from the social sciences and from history will be used to illuminate the biblical model of family life.

MN 306 Marriage Enrichment 2 Hours

A learning experience for married students and their spouse. Inquiry into the effects of ministry vocations upon marriage, aspects of marriage enrichment, foundations of marital health, and patterns of coping with marital conflict.

MN 401 Church Administration 2 Hours

A study of the principles and practices of good administration in the church, with special attention given to the small congregation in which the minister will have major responsibility for administrative matters.

MN 403 Pastoral Theology 3 Hours

Study of the nature and responsibilities of the pastoral office. Prerequisite: MN 302

MN 405 Pastoral Counseling 3 Hours

A basic introduction to pastoral care. Attention is given to basic pastoral care theory and skills.

Evangelism

EV 101 Personal Evangelism 3 Hours

An introduction to the presentation of the gospel to the individual, and personal preparation for the task. Biblical foundations and demands for evangelism provide the basis of study.

EV 201 Church Evangelism 3 Hours

An introduction to the development of a perennial program of evangelism in the local church. Study will be made of various successful programs of evangelism developed by churches throughout America. Prerequisite: EV 101

EV 301 Introduction to Church Growth 2 Hours

An introduction to the nature and practice of church growth with emphasis on its biblical, theological and historical roots. Prerequisite: EV 101

EV 302 Christian Growth and Discipleship 3 Hours

An introduction to principles of development and their application to personal spiritual growth and discipleship development.

EV 305 Practicum in International Evangelism 3 Hours

A comprehensive experience in an international setting including both practical involvement in personal and other types of evangelism and exposure to various methodologies and ministries of evangelism.

Prerequisite: EV 101 or permission of instructor.

Communication

CM 301 Sermon Preparation 3 Hours

A study of the basic principles of sermon preparation with emphasis on the expository method.

CM 302 Sermon Delivery 3 Hours

This course consists of lectures on sermon delivery together with actual preparation and presentation of sermons by class members. Emphasis is placed on preaching without notes.

Prerequisite: CM 301

CM 303 Voice and Articulation 2 Hours

Study and practice in the effective production of vocal tone and speech sounds.

CM 401 Great Preachers and Their Preaching 2 Hours

A study of outstanding preachers, their life and times, methods and messages, contribution, strengths and weaknesses.

Prerequisite: CM 301.

Christian Education

CE 201 Introduction to Christian Education .. 3 Hours

Introductory study of Christian education with emphasis on principles and objectives of educational programs of the church.

CE 301 Principles of Teaching in the Church . 3 Hours

Basic principles and concepts of Christian teaching formulated and projected into planning and presented in church-related learning experiences.

Prerequisite: RE 201.

Register

Board of Trustees



Edwin L. Bailey
Placentia, CA
 Retired Project
 Manager -Rockwell
 Int.
Term Exp. 1998



Hal Buckner Boone
Friendswood, TX
 Retired Family
 Counseling &
 Minister of Missions
 -Sagemont Bapt.
 Church



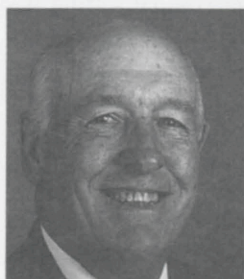
William D. Bowyer
 Vice Chairman
St. Louis, MO
 Pastor - Rock Hill
 Bapt. Church.



Jerre Brannen
Gainesville, FL
 Regional Sales -
 Duck Head Apparel
Term Exp. 1998



Clarence R. Brock
Yorktown, IN
 Pastor - First Bapt.
 Church
Term Exp. 1998



Hayward R. Casey
Morgantown, KY
 Retired Pastor -
 Browder Missionary
 Bapt. Church
Term Exp. 1999



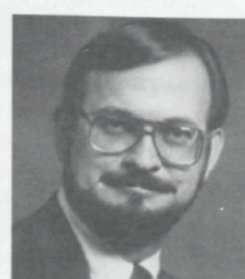
Wesley A. Dans
Shreveport, LA
 Project Engineering
 Group Leader - UOP
Term Exp. 1997



Stanley A. Denham
Manassas, VA
 Officer, US Navy
Term Exp. 1997



Elmer J. Dryden
Charlotte, NC
 Owner - Commercial
 & Industrial Leasing
 Co.
Term Exp. 1998



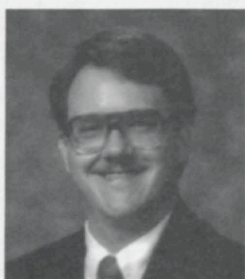
Roger W. Ellsworth
Benton, IL
 Pastor - Immanuel
 Bapt. Church
Term Exp. 1996



Lawton H. Griffith
E. Wenatchee, WA
 Pastor - Eastmont
 Bapt. Church
Term Exp. 1995



Robert E. Hand, Sr.
Greensboro, NC
 Area Manager-York Int.
Term Exp. 1995



Jimmy D. Hedrick
Seneca, KS
 Pastor-New Hope Bapt.
 Church
Term Exp. 2000



W. Gregory Horton
Simpsonville, SC
 Owner - Sun Rise
 Enterprises Inc.
Term Exp. 1995



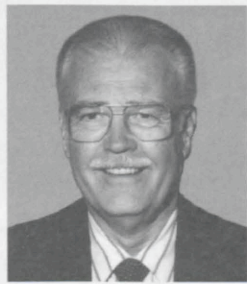
Kent Humphreys
Oklahoma City, OK
 CEO-Jacks Service
Term Exp. 1999



Daniel E. Johnston, Sr.
 Chairman
Jonesville, SC
 Pastor-Jonesville Bapt. Church
Term Exp. 1998



Tim LaHaye
Arlington, VA
 Author — Speaker
Term Exp. 2000



Walter R. Lonis
Morrison, CO
 Retired Denver Police
 Flight Instructor
 Music Director—Christ
 Bapt. Church
Term Exp. 1997



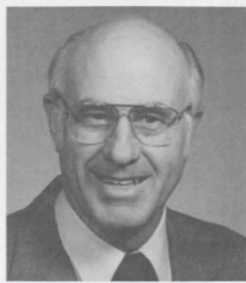
Arthur W. Madill
Monroe, NC
 Retired General Motors
 Corp. Executive
Term Exp. 1994



Ned Mathews
Gastonia, NC
 Pastor-Parkwood Bapt.
 Church
Term Exp. 1996



Sandra Page
Charlotte, NC
 Teacher-Secondary
 English
Term Exp. 1999



Calvin T. Partain
Belen, NM
 Owner-Pro Church
 Ministries
Term Exp. 1994



Coy C. Privette
Kannapolis, NC
 Consultant - Christian
 Action League
Term Exp. 2000



Cecil D. Rhodes, Jr.
Wilson, NC
 Retired Medical
 Physician
Term Exp. 1997



William Dade Sherman, Jr.
Monroe, NC
 Pastor-Benton Heights
 Bapt. Church
Term Exp. 1996



Dwight L. Smith
Ellisville, MS
 Pastor-W. Ellisville
 Bapt. Church
Term Exp. 1996



Kenneth L. Stevens
Secretary
Brighton, MI
 Pastor-First Bapt.
 Church, Green Oak
 Township
Term Exp. 1996



Cecil Ray Taylor
Satsuma, AL
 Assoc. Dean & Assoc.
 Professor University of
 Mobile
Term Exp. 1997



Dale E. Thompson
Fort Smith, AR
 Pastor-First Bapt.
 Church
Term Exp. 1997



Charles W. Waller
Treasurer
Bumpass, VA
 Pastor- Fork Bapt.
 Church
Term Exp. 1998

Administrative Council



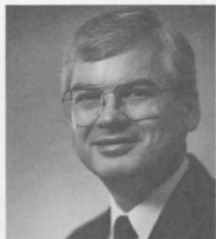
Paige Patterson

President
B.A., Hardin-Simmons College; Th.M., Th.D., New Orleans Baptist Theological Seminary. *Serving since 1992.*



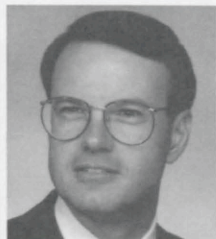
L. Russ Bush III

Academic Vice President/Dean of the Faculty
B.A., Mississippi College; M.Div., Ph.D., Southwestern Baptist Theological Seminary; Additional studies: North Texas State Univ.; Univ. of Cambridge. *Serving since 1989.*



G. Paul Fletcher

Vice President for Administration
B.B.A., Wake Forest University. *Serving since 1980.*



Allan Moseley

Vice President for Student Development/Dean of Students
B.A., Samford Univ.; M.Div., Th.D., New Orleans Baptist Theological Seminary. *Serving since 1996.*



Bart C. Neal

Vice President for Institutional Advancement
B.M., Baylor Univ.; M.R.E., Ed.D., New Orleans Baptist Theological Seminary. *Serving since 1993.*



Gerald P. Cowen

Dean of the College
B.A., Mississippi College; Th.M., Th.D., New Orleans Baptist Theological Seminary. Additional studies: Regent's Park College, Oxford. *Serving since 1992.*



Sheldon H. Alexander

Registrar/Assistant to the Dean
B.B.A., West Texas State Univ.; M.Div., Southwestern Baptist Theological Seminary. *Serving since 1989.*



Anthony W. Allen

Director of Admissions
A.B., Duke University; M.Div., Southeastern Baptist Theological Seminary. *Serving since 1993.*



Tina Dekle
Director, Ruby Reid Child Care Center

A.A. Catonsville College; B.A., Mars Hill College; M.Div./C.E., Southeastern Baptist Theological Seminary. *Serving since 1989, Director since 1994.*



Keith E. Eitel
Director, Center for Great Commission Studies

B.A., Dallas Baptist Univ.; M.A., Baylor University; D.Miss., Trinity Evangelical Divinity School; Post Doctoral Study at Faculté de Théologie Protestante de Yaoundé. *Serving since 1992.*



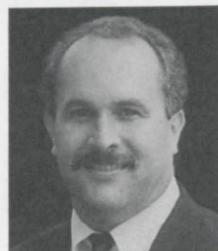
George H. Harvey
Director of Development

B.A., East Carolina University; J.D., Wake Forest University. *Serving since 1989.*



Paul Jordan

Director of Management Information Services
M.A., B.S., Appalachian State University, Ph.D. (cand.) LaSalle University. *Serving since 1995.*



C. Greg Kingry

Director of Public Relations
B.B.A., North Georgia College. *Serving since 1994.*



Shawn C. Madden

Director of Library
M.A.B.S., Texas A & M University; M.A., Criswell College. Ph.D. candidate, University of Texas at Arlington. *Serving since 1994.*



Skip Midkiff
Comptroller

B.A., Stetson University, M.Div., Southeastern Baptist Theological Seminary. *Serving since 1995.*



Julian Motley
Director of Placement and Denominational Relations

B.A., Wake Forest College; B.D., Southeastern Baptist Theological Seminary. *Serving since 1994.*



Daniel L. Taylor

Director of Physical Plant
Certificate from Piedmont Tech. *Serving since 1989.*



Steve Wingfield

Director of Student Life
B.A., Citadel; M.Div. Southeastern Baptist Theological Seminary. *Serving since 1991.*

Faculty* for the 1996 Academic Year



Cky Carrigan
*Adjunctive Professor of
Spiritual Formation*

B.A., The Criswell College; M.Div., Southeastern Baptist Theological Seminary; Ph.D.(cand.), Southeastern Baptist Theological Seminary.
Teaching since 1995



Gerald P. Cowen
*Dean of the College, Professor of
New Testament and Greek*

B.A., Mississippi College; Th.M., New Orleans Baptist Theological Seminary; Th.D., New Orleans Baptist Theological Seminary. Additional studies: Regent's Park College, Oxford.
Teaching since 1992.



Shawn C. Madden
Instructor of Old Testament

B.A., Texas A & M University; M.A.B.S., Criswell College. Serving since 1994. Ph.D (Cand), University of Texas at Arlington.
Teaching since 1995.



Fred M. Williams, III
Instructor of History and Languages

B.A., Vanderbilt University; M.Div., Trinity Evangelical Divinity School; Th.M., Southeastern Baptist Theological Seminary; Ph.D. (cand.), University of North Carolina at Chapel Hill.
Teaching since 1996.



R. Logan Carson
Professor of Theology

B.A., Shaw University; B.D., Hartford Seminary Foundation; Th.M., Louisville Presbyterian Theological Seminary; Ph.D., Drew University.
Teaching since 1994



Mark Howell
Adjunctive Professor of Preaching

B.A., Carson Newman; M.Div., SEBTS, Ph.D. (cand.) SEBTS
Teaching since 1996.



C. Ivan Spencer
*Instructor of Historical Studies,
Missions, and Evangelism*

B.A., The Criswell College; M.A., The Criswell College; Ph.D. (cand.), University of Texas at Arlington.
Teaching since 1996.

* **Note:** Seminary Faculty also serve as adjunctive faculty for the College.

Seminary Faculty

Stephen J. Andrews

Assistant Professor of Old Testament and Hebrew
B.A., Carson-Newman College; M.Div., Eastern Baptist Theological Seminary; Th.M., Southeastern Baptist Theological Seminary; M.Phil., Hebrew Union College.
Teaching since 1991.

David R. Beck

Assistant Professor of New Testament and Greek
B.A., Eastern Kentucky University; M.Div., Eastern Baptist Theological Seminary; Ph.D., Duke University. *Teaching at SEBTS since 1995.*

George W. Braswell, Jr.

Professor of Missions and World Religions
B.A., Wake Forest University; B.D., Yale Divinity School; D.Min., Southeastern Baptist Theological Seminary; M.A., Ph.D., University of North Carolina at Chapel Hill; Additional studies: University of Teheran. *Teaching since 1974.*

Edward A. Buchanan

Professor of Christian Education
A.B., Rutgers University; M.R.E., New York Theological Seminary; Ed.D., The Southern Baptist Theological Seminary.
Teaching since 1993.

L. Russ Bush III

Professor of Philosophy of Religion

B.A., Mississippi College; M.Div., Ph.D., Southwestern Baptist Theological Seminary; Additional studies: North Texas State University; University of Cambridge. *Teaching since 1989.*

Paul B. Carlisle, Jr.

Assistant Professor of Pastoral Care and Counseling

B.A., East Texas Baptist University; M.S., East Texas Baptist University; Ed.D., East Texas Baptist University. *Teaching since 1992.*

John L. Davis

Instructor of Sacred Music

B.M., Samford University; M.C.M., The Southern Baptist Theological Seminary; D.M.A. candidate, The University of Georgia. *Teaching since 1993.*

Keith E. Eitel

Professor of Christian Missions

B.A., Dallas Baptist University; M.A., Baylor University; D.Miss., Trinity Evangelical Divinity School; Post Doctoral Study at Faculte' de Theologie' Protestant de Yaounde'. *Teaching since 1992.*

Gary A. Galeotti

Professor of Old Testament

B.A., Oklahoma Baptist University; M.Div., Southwestern Baptist Theological Seminary; Th.D., Southwestern Baptist Theological Seminary. *Teaching since 1992.*

James West Good

Professor of Church Music

B.A., Wake Forest University; M.S.M., D.M.A., The Southern Baptist Theological Seminary; Additional studies: Boston University; University of North Carolina. *Teaching since 1978.*

Daniel R. Heimbach

Associate Professor of Christian Ethics

B.S., United States Naval Academy; M.A., Trinity Evangelical Divinity School; M.Div., Trinity Evangelical Divinity School; M.Phil., Drew University; Ph.D., Drew University. *Teaching since 1993.*

Ben S. Johnson

Professor of Music

A.B., University of Missouri; M.A., Ed.D., Columbia University; Additional studies: Academy for Music, Vienna; Juilliard School of Music; Union Theological Seminary (NYC); Indiana University; University of North Carolina at Chapel Hill. *Teaching since 1956.*

David E. Lanier

Associate Professor of New Testament

B.A., North Georgia College; M.A. University of North Carolina at Greensboro; M.Div., Ph.D., Southwestern Baptist Theological Seminary. *Teaching since 1992.*

J. Gregory Lawson

Assistant Professor of Christian Education

B.A., Carson-Newman College; M.A., Tennessee Theological Univ.; J.D., Campbell Univ. School of Law; M.Ed., North Texas State Univ.; M.Div., M.A., Southwestern Baptist Theological Seminary; Ed.D., Univ. of North Texas. *Teaching since 1996.*

Wayne V. McDill

Professor of Preaching

B.A., East Texas Baptist College; M.Div., Th.D., Southwestern Baptist Theological Seminary. *Teaching since 1989.*

Allan Moseley

Associate Professor of Pastoral Leadership

B.A., Samford University; M.Div., Th.D., New Orleans Baptist Theological Seminary. *Teaching since 1996.*

Paige Patterson

Professor of Theology

B.A., Hardin-Simmons College; Th.M., Th.D., New Orleans Baptist Theological Seminary. *Teaching since 1992.*

David L. Puckett

Associate Professor of Church History

B.A., Mississippi College; Th.M., Dallas Theological Seminary; Ph.D., University of Chicago. *Teaching since 1994.*

Alvin L. Reid

Associate Professor of Evangelism and Church Growth

B.A., Samford University; M.Div., Ph.D., Southwestern Baptist Theological Seminary. *Teaching since 1995.*

Maurice A. Robinson

Associate Professor of New Testament

A.A., Manatee Junior College; B.A., University of South Florida; M.Div., Th.M., Southeastern Baptist Theological Seminary; Ph.D., Southwestern Baptist Theological Seminary. *Teaching since 1991.*

Mark F. Rooker

Associate Professor of Old Testament

B.A., Rice University; Th.M., Dallas Theological Seminary; M.A., Ph.D., Brandeis University. *Teaching since 1996.*

David S. Sinclair

Assistant Professor of Preaching and Speech

B.A., Southern Methodist University; M.Div., Southwestern Baptist Theological Seminary; Th.M., Dallas Theological Seminary; Ph.D., University of Texas at Austin. *Teaching since 1994.*

Appointed Faculty for the 1996-1997 Academic Year

Kenneth S. Coley

Assistant Professor of Christian Education

B.S., Wake Forest University; M.Ed., College of William and Mary; Ed.D., University of Maryland.

Daniel B. Forshee

Assistant Professor of Evangelism & Church Growth

B.A., Mobile College; M.Div., Southwestern Baptist Theological Seminary; Ph.D. Southwestern Baptist Theological Seminary.

John S. Hammett

Assistant Professor of Systematic Theology

B.A., Duke University; M.Div., Trinity Evangelical Divinity School; D.Min., Southeastern Baptist Theological Seminary; Ph.D., Southern Baptist Theological Seminary. Additional Studies: Vanderbilt Divinity School.

L. Keith Harper

Assistant Professor of Church History

B.A., Lexington Baptist College; M.A., Murray State University; Ph.D., University of Kentucky.

Andreas J. Kostenberger

Associate Professor of New Testament

Mag. et Dr. rer. soc. oec., Vienna University of Economics; M.Div., Columbia Biblical University; Ph.D., Trinity Evangelical Divinity School.

Carolyn J. McClendon

Instructor of Christian Education

B.A., Southeastern Louisiana University; M.R.E., New Orleans Baptist Theological Seminary; Ed.D., New Orleans Baptist Theological Seminary.

H. Moran Whitley

Instructor of Instrumental Music and Music Education

B.M., Appalachian State University; M.Div., D.Min., Southeastern Baptist Theological Seminary; Graduate Certification in Music Education, North Carolina Central University; Ph.D. Candidate, University of North Carolina-Greensboro.

Visiting and Adjunctive Professors and Instructors (Fall 1995 - Summer 1996)

Bill Bennett

Visiting Professor of Church History

B.A., Wake Forest University; M.Div., M.A., Duke University; Th.D., New Orleans Baptist Theological Seminary.

James H. Blackmore

Visiting Emeritus Professor of A.Div. Studies

B.A., Wake Forest College; B.D., Colgate-Rochester Divinity School; Ph.D., University of Edinburgh; Additional studies: Duke University, University of Iowa, Princeton Institute of Theology.

James P. Cogdill, Jr.

Adjunctive Professor of Evangelism

B.A., B.S., Southeast Missouri State University; M.Div., Ph.D., The Southern Baptist Theological Seminary.

William James Curtis

Adjunctive Instructor of A.Div. English

B.A., Tennessee Temple University; M.A., Univ. of Tennessee at Chattanooga.

William D. Delahoyde

Adjunctive Professor of Pastoral Leadership and Church Ministries

B.A., University of Wisconsin; M.Div., Trinity Evangelical Divinity School; Juris Doctor, Northwestern University School of Law.

Donald Detzler

Adjunctive Professor of Theological German

B.A., Wheaton College; M.A., Wheaton Graduate School of Theology; Ph.D., University of Manchester, England.

Donald Vernon Dowless

Adjunctive Professor of Church History

B.A., Univ. of North Carolina; M.Div., Southeastern Baptist Theological Seminary; Ph.D., Baylor University.

Nannette Godwin

Adjunctive Instructor of Church Music

B.M., University of North Carolina at Greensboro.

R. Calvin Guy

Visiting Fletcher Professor of Missions

B.A., Union University; Th.M., Th.D., Southwestern Seminary; Additional studies: Union Theological Seminary.

Chris E. Haire

Adjunctive Instructor of Church Music

B.S., University of North Carolina at Chapel Hill.

John S. Hammett

Adjunctive Professor of Church History

B.A., Duke Univ.; M.Div., Trinity Evangelical Divinity School; D.Min., Southeastern Baptist Theological Seminary; Ph.D., Southern Baptist Theological Seminary; Additional studies: Vanderbilt Divinity School.

William F. Harrell

Adjunctive Professor of Pastoral Leadership and Church Ministries

Associate of Science, Abraham Baldwin College; B.S., Valdosta State College; D.D., Southern California Theological Seminary.

D. Jackson Heath

Adjunctive Professor of Christian Education

A.A., Gardner-Webb College; B.A., Mars Hill College; B.D., Southeastern Baptist Theological Seminary.

Jose A. Hernandez

Adjunctive Professor of Missions

B.S., Pan American University; M.Div., Ph.D., Southwestern Baptist Theological Seminary.

Richard D. Land

Visiting Professor of Church History

A.B., Princeton University; Th.M., New Orleans Baptist Theological Seminary; D. Phil., University of Oxford.

Richard D. Marks

Adjunctive Professor of Pastoral Care

B.A., University of North Jacksonville; M.A.R.E., M.A.M.F.C., Ph.D., Southwestern Baptist Theological Seminary.

Alan W. McAlister

Adjunctive Professor of Pastoral Leadership and Church Ministries

B.A., Eastern New Mexico University; M.Div., Mid-America Baptist Theological Seminary.

Charles L. McMillan, Jr.

Adjunctive Professor of Pastoral Leadership and Church Ministries

A.B., Mercer University; B.D., Southeastern Baptist Theological Seminary.

Albert L. Meiburg

Adjunctive Professor of Pastoral Theology

B.S., Clemson University; B.D., Th.D., The Southern Baptist Theological Seminary; Additional studies: Union Theological Seminary; University of Louisville; University of Michigan.

Julian Motley

Adjunctive Professor of Pastoral Leadership and Church Ministries

B.A., Wake Forest College; B.D., Southeastern Baptist Theological Seminary.

Charles D. Page

Adjunctive Professor of Pastoral Leadership and Church Ministries

B.A., Wake Forest University; M.Div., D.Min., Southeastern Baptist Theological Seminary.

Frank S. Page

Adjunctive Professor of Pastoral Leadership and Church Ministries

B.S., Gardner-Webb University; M.Div., Ph.D., Southwestern Baptist Theological Seminary.

Dorothy Patterson

Adjunctive Professor of Christian Family Ministry

B.A., Hardin-Simmons University; Th.M., New Orleans Baptist Theology Seminary; D.Min., Luther Rice Seminary; Ph.D. Candidate, University of South Africa.

Robert E. Reccord

Adjunctive Professor of Pastoral Leadership and Church Ministries

B.A., Indiana University; M.Div., D.Min., Southwestern Baptist Theological Seminary; Additional studies: Regent College, Oxford University.

R. Philip Roberts

Adjunctive Professor of Evangelism

B.A., Georgetown College; M. Div., The Southern Baptist Theological Seminary; Ph.D., Free University of Amsterdam; Additional studies: Oxford University.

Johnny E. Ross

Adjunctive Professor of Christian Education

A.B., M.A., University of North Carolina at Chapel Hill; M.Div., M.R.E., Southeastern Baptist Theological Seminary.

J. Christopher Schofield

Adjunctive Instructor of Evangelism

B.A., Gardner-Webb College; M.Div., Th.M., Southeastern Baptist Theological Seminary.

Scott V. Strong

Adjunctive Instructor of Piano

Studied at Florida State University.

James E. White

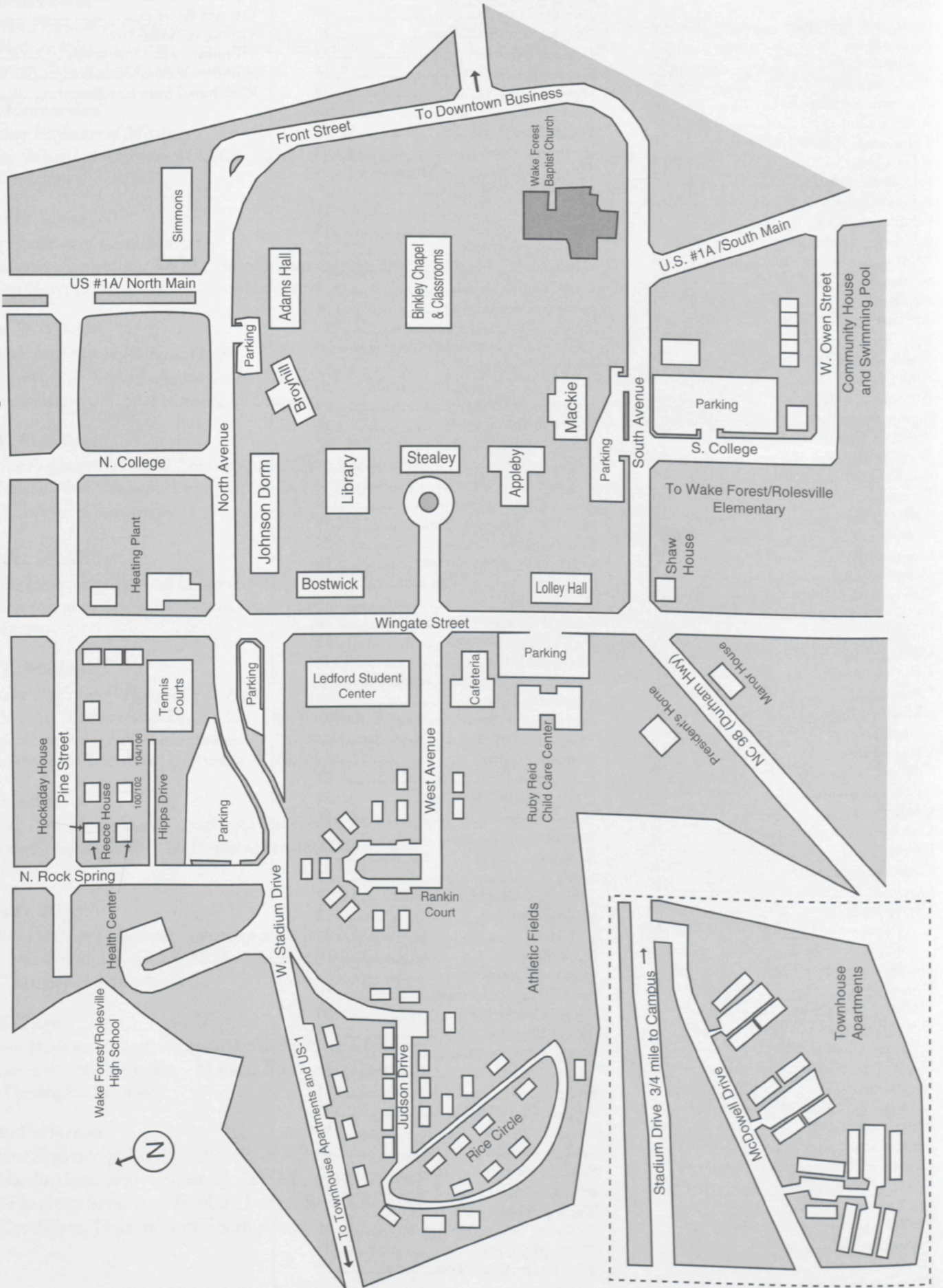
Adjunctive Professor of Philosophy of Religion

B.S., Appalachian State University; M.Div., Ph.D., The Southern Baptist Theological Seminary; Additional studies: Vanderbilt University.

Index

Abstract of Principles	3	Foreign Student Admissions	8	Transfer of Credits	23
Academic Calendar	6	Founders' Day	19	Veterans Benefits	11
Academic Life	22	General Studies Courses	28	Visiting & Adjunctive	
Academic Load	12, 23	Grading Symbols	23	Professors and Instructors	38
Academic Regulations	22	Graduation	9, 24	Withdrawal from Courses	24
Accreditation	5	Greek Courses	29	Withdrawal from Enrollment	24
Theodore F. Adams Lectures	19	Guest House	16		
Adams Hall	14	Health Center	16, 18		
Adding Courses	24	Hebrew Courses	28		
Administrative Council	34	History of College and Seminary	4		
Admission Policy	8	Hospital Insurance	9		
Admission Procedures	8	Housing	16		
Affiliation and Support	4	Housing Regulations	10		
Alumni Association	13	Inclement Weather	22		
Appleby Hall	16	Insurance	9		
Application Deadlines	8	Introduction	4		
Appointed Faculty	37	Johnson Dormitory	16		
Archaeology Courses	28	Kendrick-Poerschke Lectures	19		
Athletic Field	16	Leadership and Ministry Conferences	20		
Attendance of Classes	22	Ledford Student			
Baptist Book Store	19	Center/Cannon Gymnasium	16		
Binkley Chapel	15	Location of Seminary	4		
Board of Trustees	32	Lolley Hall	16		
Broyhill Hall	14	Mackie Hall	14		
Cafeteria	16	Missionary Days	20		
Cafeteria Cost	10	Missions Courses	30		
Campus and Facilities	14	Music Opportunities	19		
Campus Map	40	New Testament Courses	29		
Campus Visits	4	Old Testament Courses	28		
Carver-Barnes Lectures	19	Opportunities for Ministry	18		
Changes in Registration	22	Organizations	19		
Chapel	18	Page Lectures	19		
Chaplains' Conference	20	Pastors' Seminar	20		
Children of Students	18	Peer Support Groups	19		
Choirs	19	Physical Plant	16		
Christian Education Courses	31	Preaching and Speech Courses	31		
Church History Courses	30	President's Home	16		
Church Work	11	Probation (academic)	23		
College Community Life	18	Programs of Study	26		
Commencements	24	Progress Reports	24		
Conferences	20	Publications	21		
Convention Support	9	Quality Points	24		
Convocations	19	Reece House	16		
Cooperative Program	4	Refunds	9		
Course Descriptions	28	Register	32		
Degree Programs	26	Rents	9		
Associate of Divinity	26	Ruby Reid Child Care Center	16, 18		
Bachelor of Arts	27	Scholarships	12		
Denny Library Building	15	Self-Help	11		
Diploma Fees	9	Shaw House	16		
Doctrinal Guidelines	22	Simmons Dormitory	17		
Dormitory Housing Policy	10	Special Days & Lectures	19		
Dropping Courses	24	Spring Conference	20		
Duplex Apartments	17	Spring Lectures	19		
Employment	12	Statement of Purpose	2		
Entrance Requirements	8	Stealey Hall	14		
Ethics Courses	29	Student Aid	11		
Evaluation	23	Student Classification	23		
Evangelism Courses	31	Student Council	19		
Extracurricular Activities	18	Student Records	22		
Faculty	36	Student Spouses	18		
Faculty Lectures	19	Summer School	25		
Faculty Profile	5	The Center for			
Fees and Expenses	9	Great Commission Studies	25		
Financial Assistance	11	Theology Courses	29		
		Townhouse Apartments	17		

Southeastern Campus

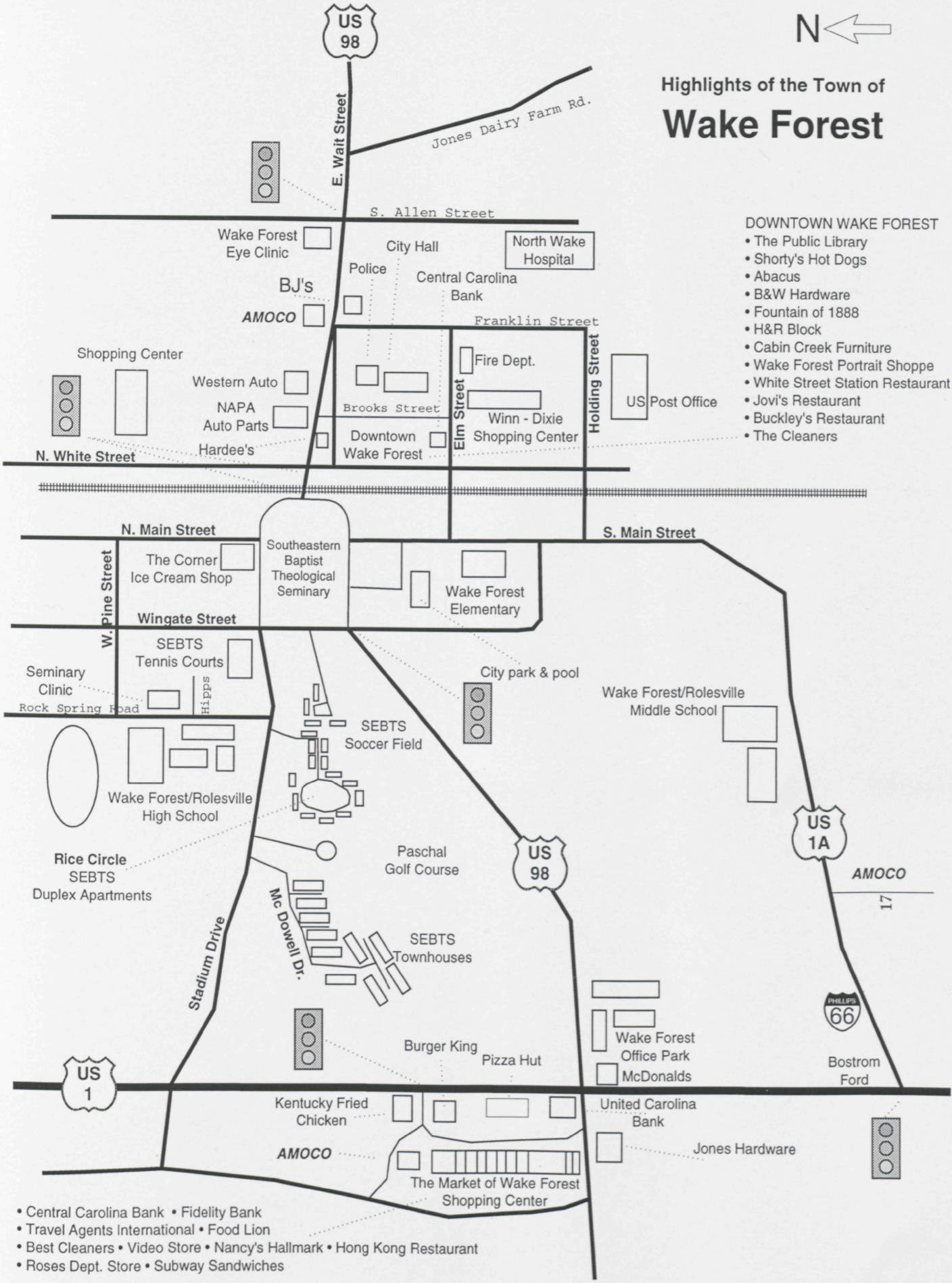




Highlights of the Town of Wake Forest

DOWNTOWN WAKE FOREST

- The Public Library
- Shorty's Hot Dogs
- Abacus
- B&W Hardware
- Fountain of 1888
- H&R Block
- Cabin Creek Furniture
- Wake Forest Portrait Shoppe
- White Street Station Restaurant
- Jovi's Restaurant
- Buckley's Restaurant
- The Cleaners



- Central Carolina Bank • Fidelity Bank
- Travel Agents International • Food Lion
- Best Cleaners • Video Store • Nancy's Hallmark • Hong Kong Restaurant
- Roses Dept. Store • Subway Sandwiches



**Southeastern Baptist
Theological College**

**P.O. Box 1889
Wake Forest, North Carolina 27588
(919)556-3101**