



**2004**  
**Annual Minutes**  
**of the**  
**Tuckaseige**  
**Baptist Association**

One Hundred Seventy-Fifth  
Annual Session

Hyatts Chapel Baptist Church  
Thursday, October 14, 2004

Mt. Pleasant Baptist Church  
Friday, October 15, 2004

REV 1 1 2011



# **2004 BOOK OF REPORTS**

*for the One Hundred Seventy-Fifth Annual Meeting*

of the

## **TUCKASEIGEE BAPTIST ASSOCIATION**

**Hyatts Chapel Baptist Church  
Thursday, October 14, 2004**

and

**Mt. Pleasant Baptist Church  
Friday, October 15, 2004**

**Art Fowler, Moderator  
Gracella Morris, Clerk**

*"From whom the whole body fitly joined together and compacted by that which every joint supplieth, according to the effectual working in the measure of every part, maketh increase of the body unto the edifying of itself in love. "*

*(Ephesians 4:16)*

# 2004 BOOK OF REPORTS

for the One Hundred Seventy-Fifth Annual Meeting

of the

## TUCKAHOGE BAPTIST ASSOCIATION

Hyatt Chapel Baptist Church  
Thursday, October 14, 2004

and

St. Elizabeth Baptist Church  
Friday, October 15, 2004

in honor of  
Gordon Thomas Clark

The members of the Tuckahoe Baptist Association  
are proud to present this book of reports  
to you in honor of our pastor, Gordon Thomas Clark.  
We hope you will find it an interesting and  
inspiring read.



The 2004 minutes of the Tuckaseegee Baptist Association are lovingly dedicated to Rev. and Mrs. Hazen Pangle. The many years of faithful service to Christ and to our association are very much appreciated.

Hazen was born in 1922, the oldest of four children. Saved and baptized at the age of 14, he joined the Locust Field Church. Hazen served during WWII in the Army. Returning home, he co-owned a cabinet shop with his dad, Lunie Pangle.

In 1950, he married Virginia Green. Virginia had also joined Locust Field after her baptism at age 14. In 1955, they moved to Klamoth, California, where Hazen donated his time and carpentry skills to build a Baptist church. They later moved to Darrington, Washington, where Hazen served as choir director and was ordained a Deacon. They helped to build or remodel churches there and in Aberdeen, Montesano, and Corvallis, WA.

Hazen was ordained into the ministry in 1961. He attended Fruit-

land Baptist Institute for three years. He was elected twice as pastor of Dicks Creek Baptist Church, twice at Long Branch Baptist Church, and twice at Governor's Island Baptist Church in Swain County. He and Virginia also pastored Locust Field, Calvary, and Wilmont Baptist Churches in Jackson County. He retired from 35 years in the ministry and from Drexel Heritage.

Virginia worked in manufacturing 28 years and retired from Smoky Mountain Mental Health. Virginia worked alongside her husband, helping in Bible Schools and WMU. She has gone on two mission trips, one to Brazil, and one to New York. Both have supported the associational work by serving on various committees (personnel, memorials, resolutions, evangelism, WMU Council, time place and preacher, credentials, committee on committees, constitution, Children's Home representative, Home Missions representative). Hazen served as Vice Moderator in 1991.

The Pangles have two children, Aletta Buchanan and Waymon Pangle. They have 8 grandchildren and 4 great-grandchildren.

## *Table of Contents*

<b>Dedication, In Honor of Rev. and Mrs. Hazen Pangle</b>	
<b>Associational Directory</b> .....	1
<b>Order of Business, First Session</b> .....	3
<b>Order of Business, Second Session</b> .....	4
<b>Proceedings 175<sup>th</sup> Annual Meeting</b> .....	5
<b>Messengers 175<sup>th</sup> Annual Meeting</b> .....	9
<b>Committee Reports</b>	
Committee on Committees Report .....	11
Nominating Committee Report .....	12
Executive Committee .....	13
<b>Associational Calendar of Activities, 2004 - 2005</b> .....	15
<b>Program Reports</b>	
Place and Preacher .....	16
Sunday School .....	16
Senior Adult .....	17
Music .....	18
Youth .....	19
Vacation Bible School .....	20
Woman's Missionary Union .....	21
<b>Stewardship Reports</b>	
Financial Report, Proposed Budget, 2005 .....	22
Financial Information Summary .....	23
Balance Sheet as of September 30, 2004 .....	24
<b>Historical Report</b> .....	25
<b>Changes in the Churches</b> .....	26
<b>Memorials</b> .....	27
<b>Historical Table</b> .....	28
<b>Local Agency Reports</b>	
Jackson County Bible Club .....	32
SouthWest Area Resort Ministries (SWARM) .....	33
George W. Truett Baptist Camp and Conference Center .....	35
United Christian Ministries .....	36
WestCare Health System's Pastoral Care & Chaplaincy Dept. ....	37
<b>Institutional Reports</b>	
Annuity Board (GuideStone Financial Resources of SBC) .....	38
Baptist Children's Homes of NC .....	39
NC Baptist Foundation .....	41
The NC Baptist Hospitals, Inc. ....	42
Baptist Retirement Homes of NC, Inc. ....	44
Council on Christian Higher Education .....	45
Campbell University .....	46
Fruitland Baptist Bible Institute .....	47
<b>Articles of Incorporation</b> .....	48
<b>By-Laws</b> .....	50

## Directories

Pastors .....	58
Ministers of Music .....	59
Ministers of Youth .....	60
Ministers of Children .....	60
Ministers of Preschool .....	60
Ministers of Recreation .....	60
Sunday School Directors .....	61
Discipleship Training Directors .....	61
Church Treasurers .....	62
Stewardship Directors .....	62
Church Pianists .....	63
Church Organists .....	63
Women's Missionary Union Directors .....	64
Brotherhood Directors .....	64
Missions Development Directors .....	64
Media Library Directors .....	64
Prayer Ministry Coordinators .....	64
Church Clerks .....	65
Church Secretaries .....	66
Chairmen of Deacons .....	67
Representatives on Associational Executive Board .....	68
Ordained Ministers .....	68

## Statistical Tables

Summary .....	69
Member & Congregational .....	71
Baptism .....	73
Sunday School .....	75
Discipleship Training .....	77
Music Ministry .....	79
Missions Involvement .....	81
Missions Education .....	83
General Financial Information .....	85
Missions Financial Information .....	87

<b>Digest of Church Profiles .....</b>	<b>89</b>
--	-----------

# ASSOCIATIONAL DIRECTORY 2004-2005

## STAFF

Secretary, Mrs. Gracella Morris  
1274 Mineral Springs Dr., Sylva, NC 28779 ..... 586-5784

## GENERAL OFFICERS

Moderator, Rev. Art Fowler  
P O Box 336, Cashiers, NC 28717 ..... 743-3040

Vice-Moderator, Rev. Mike Moore  
95 Bidwell Road, Whittier, NC 28789 ..... 497-9860

Clerk, Mrs. Gracella Morris  
1274 Mineral Springs Dr., Sylva, NC 28779 ..... 586-5784

Assistant Clerk, Mrs. Betty Greene  
388 Brooks Branch Rd., Sylva, NC 28779 ..... 586-9759

Treasurer, Mrs. Jennie Miller  
35 Tanglewood Dr, Whittier, NC 28789 ..... 586-6392

Assistant Treasurer, Mr. Arthur Stephens  
95 Genesis Trail Drive, Sylva, NC 28779 ..... 586-6479

Historian, Ms. Mildred Wilson  
561 Rufus Robinson Rd, Sylva, NC 28779 ..... 586-8878

Parliamentarian, Rev. Clemmey Queen  
220 Frosty Ridge Rd., Sylva, NC 28779 ..... 586-8616

Assistant Parliamentarian, Roy Dalton  
374 South Piney Mtn, Whittier, NC 28789 ..... 586-6638

## TRUSTEES

Mr. Arnold Buchanan  
PO 1219, Cashiers, NC 28717 ..... 293-3923

Mr. Bob Parker  
P O Box 2343, Sylva, NC 28779 ..... 586-4445

Mr. Carlos Gunter  
179 Bidwell Rd., Whittier, NC 28789 ..... 497-7687

## REPRESENTATIVES

Annuity Board, Rev. Cecil Frady  
765 Fred Smith Road, Tuckasegee, NC 28783 ..... 293-9677

Baptist Childrens' Homes of N.C., Rev. Gerald Morris  
1274 Mineral Springs Dr., NC 28779 ..... 586-5784

Baptist Retirement Homes of N.C., Mr. Earl Hooper  
103 Beta Circle Dr., Sylva, NC 28779 ..... 586-2420

Biblical Recorder, Mr. Ronnie Henderson  
170 Boxwood Drive, Whittier, NC 28789 ..... 497-9887



Christian Higher Education, Ms. Nancy Sherrill  
 1057 Ashe Loop Road, Sylva, NC 28779 ..... 586-2300  
 Truett Camp, Mr. Robert Sutton  
 5589 US 74 E., Sylva, NC 28779 ..... 586-4651

**ASSOCIATIONAL PROGRAM LEADERS**

Sunday School Director, Mr. Arnold Brooks  
 P O Box 836, Sylva, NC 28779 ..... 586-8386  
 Vacation Bible School Director, Mrs. Betty Greene  
 388 Brooks Branch, Sylva, NC 28779 ..... 586-9759  
 Discipleship Director, Mr. Steve Lillard  
 384 Billy Cove Rd., Sylva, NC 28779 ..... 631-9650  
 Music Director, Mr. Emery Brooks  
 P O Box 841, Cullowhee, NC 28723 ..... 631-0933  
 Musician, Mrs. Betty Greene  
 388 Brooks Branch Rd., Sylva, NC 28779 ..... 586-9759  
 Deacons' Chairman  
 Assistant Deacons' Chairman  
 Pastor Conference President  
 Brotherhood Director, Mr. Lindon Allen  
 1200 Barkers Creek Rd, Sylva, NC 28779 ..... 586-6883  
 Youth Director, Rev. Cory Boone  
 5 Wild Rose Drive, Whittier, NC 28789 ..... 631-0676  
 Senior Adult Director, Mrs. Eloise Shuler  
 757 Buff Creek Rd., Sylva, NC 28779 ..... 586-6080  
 Singles Ministry Director, Mr. Brad Stillwell  
 PO Box 24, Webster, NC 28788 ..... 586-0098  
 Seminary Extension Director  
 Stewardship Director, Rev. Mike Moore  
 95 Bidwell Rd., Whittier, NC 28789 ..... 497-9860  
 WMU Co-Director, Ms. Janice Burnette  
 928 Rufus Robinson Rd., Sylva, NC 28779 ..... 586-6819  
 WMU Co-Director, Mrs. Nelda Reid  
 5107 US Hwy 74 E, Sylva, NC 28779 ..... 586-9538

**"EDIFYING THE CHURCH BODY IN LOVE"**

From whom the whole body fitly joined together and compacted by that which every joint supplieth, according to the effectual working in the measure of every part, maketh increase of the body unto the edifying of itself in love. (Ephesians 4:16)

**TUCKASEIGEE BAPTIST ASSOCIATION**  
ONE HUNDRED SEVENTY-FIFTH ANNUAL MEETING

**ORDER OF BUSINESS**  
**FIRST SESSION**

**Thursday, October 14, 2004**

**Hyatts Chapel Baptist Church**

*Art Fowler, Moderator*

4:30 pm Supper ..... Hyatts Chapel Baptist Church  
6:00 pm Convene & Welcome ..... Moderator

**WORSHIP**

Congregational Singing ..... Emery Brooks  
Scripture & Prayer ..... Rev. Dale Roberts, Pastor  
Choral Music ..... Hyatts Chapel Baptist Church Choir  
Scripture & Sermon ..... Rev. Larry Bryson

**BUSINESS**

6:45 pm Declaration of the 175th Annual Session ..... Moderator  
Adoption of Order of Business ..... David Monteith  
6:50 pm Recognition of New Pastors & Visitors ..... Rev. Mike Farmer  
Appointment of committee on committees ..... Moderator  
6:55 pm Congregational Singing ..... Emery Brooks

**REPORTS**

7:00 pm WMU ..... Nelda Reid  
Senior Adult ..... Eloise Shuler  
Music ..... Emery Brooks  
Youth ..... Jessie Stewart  
Sunday School ..... Arnold Brooks  
VBS ..... Betty Greene  
Historical Events ..... Mildred Wilson

**COMMITTEES**

7:30 pm Stewardship Committee & Special Recognition ..... Mike Moore  
Committee on Committees ..... C.L. Proffitt  
Nominating Committee ..... Brad Stillwell  
Credentials Committee ..... Rev. Cecil Frady  
Memorials Committee ..... Janice Burnette  
Miscellaneous .....

**MISSION REPORTS**

7:50 pm Mission Trips . Cashiers Baptist, Hamburg Baptist, Scotts Creek Baptist Churches & C.L. Proffitt

**WORSHIP**

8:00 pm Special Music ..... Knowles Family  
8:10 pm Message ..... Rev. Ray Knowles  
9:00 pm Benediction ..... Rev. Cecil Frady

**"EDIFYING THE CHURCH BODY IN LOVE"**

From whom the whole body fitly joined together and compacted by that which every joint supplieth, according to the effectual working in the measure of every part, maketh increase of the body unto the edifying of itself in love. (Ephesians 4:16)

**TUCKASEIGEE BAPTIST ASSOCIATION**  
ONE HUNDRED SEVENTY-FIFTH ANNUAL MEETING

**ORDER OF BUSINESS**  
**SECOND SESSION**

**Friday, October 15, 2004**

**Mt. Pleasant Baptist Church**

*Art Fowler, Moderator*

4:30 pm Supper . . . . . Mt. Pleasant Baptist Church  
6:00 pm Convene & Welcome . . . . . Moderator  
6:05 pm Scripture & Prayer . . . . . Rev. Jack Robinson  
Special Music . . . . . Emery Brooks  
Congregational Singing . . . . . Emery Brooks

**REPORTS**

6:15 pm West Care Health System Chaplaincy . . . . . Rev. Mike Farmer  
Truett Baptist Camp . . . . . Richard Robinson  
United Christian Ministries . . . . . Kathy C. Cross  
Baptist Children's Homes . . . . . Rev. Lloyd Fish/Rev. Lewis Smith  
Jackson County Bible Club . . . . . Rev. Steve Alexander  
Spanish Mission (El Centro Del Señor) . . . . . Rev. Robert Fernandez  
7:20 pm Congregational Singing . . . . . Emery Brooks  
Registration . . . . . Gracella Morris

**COMMITTEES**

7:25 pm Executive Committee . . . . . Rev. Art Fowler  
Personnel Committee . . . . . Rev. Gerald Morris  
Place & Preacher Committee . . . . . Brad Stillwell  
Stewardship . . . . . Rev. Mike Moore  
Resolutions Committee . . . . . Rev. Gene Hawkins

**WORSHIP**

8:00 pm Congregational Singing . . . . . Emery Brooks  
Special Music . . . . . Sr. Adult Choir  
Scripture & Sermon . . . . . Rev. Mike Moore  
9:00 pm Closing Congregational Song . . . . . Emery Brooks  
Benediction . . . . . Rev. Terry Jenkins

**PROCEEDINGS**  
**175<sup>th</sup> ANNUAL MEETING**  
**FIRST SESSION, THURSDAY, OCTOBER 14, 2004**

1. Hyatts Chapel Baptist Church hosted the first session of the 175th Annual Meeting of the Tuckaseegee Baptist Association. A delicious meal was served at 4:00 p.m. A total of 101 present: 73 Messengers and 28 visitors representing 22 churches (includes hostess committee members who prepared and served the meal).
2. Rev. Art Fowler, Moderator, welcomed everyone.
3. Emory Brooks led the congregation in singing "Victory in Jesus".
4. Rev. Dale Roberts welcomed everyone to Hyatts Chapel Baptist Church and read John 3:16. The Hyatts Chapel Baptist Church Choir sang special music.
5. Rev. Larry Bryson, pastor of Promise Land Baptist Church, brought scripture and sermon from Luke 5:1-11.
6. The 175<sup>th</sup> Annual Meeting was called to order by Moderator Art Fowler.
7. David Monteith, Order of Business Committee Chairman, asked for changes to the Agenda. No changes were made and a motion was made and approved to adopt the Order of Business as presented.
8. Rev. Mike Farmer, recognized new pastors at the Associational Meeting. Rev. Dale Roberts is serving at Hyatts Chapel, Rev. Brad Hughes is the associate pastor at Hamburg, Rev. Ray Fox is serving at Rockdale, Rev. John Kinsland is serving at Greens Creek and Rev. Cecil Frady is serving as interim at East Fork.
9. The Moderator announced appointment of Committee on Committees on page 11 and it was approved.
10. Emory Brooks led the congregation in singing, "Jesus Saves".

**REPORTS**

11. **WMU** - Nelda Reid gave the WMU Report. She highlighted activities of WMU on page 21.
12. **Senior Adult** - Eloise Shuler gave the Senior Adult report listed on page 17.
13. **Music** - Emery Brooks gave the Music report listed on page 18. He said 17 churches were represented at the association's annual singing. Hopefully more will participate next year.
14. **Youth** - Jessie Stewart gave the youth report listed on page 19. She desires that the churches will unite together for more evangelistic youth opportunities.
15. **Sunday School**: Arnold Brooks gave the Sunday School Report on page 16. He desires that the churches will take Deuteronomy 31:12-13 as their theme verse for next year.
16. **VBS** - Betty Greene gave the Vacation Bible School Report listed on page 20.
17. **Historical Events** - Mildred Wilson presented a report of special church happenings for the year. The detailed report will be in the annual minutes.
18. Ray Knowles and his family led the congregation in singing "I'll Fly Away".

**COMMITTEES**

19. **Stewardship** - Rev. Mike Moore presented the proposed 2005 budget to be voted on during the second session. The budget is on page 22.
20. Rev. Mike Moore recognized Cashiers Baptist as top church in the association that gave to the Lottie Moon Christmas Offering in 2003.
21. **Committee on Committees** - C.L. Proffitt presented the motion that the list on page 11 be approved. No further nominations were made and the motion carried.
22. **Nominating Committee** - Brad Stillwell presented the motion that the list on page 12 be accepted for 2004-2005. No further nominations were made and the motion carried.

23. **Credentials Committee** - Rev. Cecil Frady reported that it had been a good year and there was nothing to report. He expressed the need for a Baptist Men's link to the churches from the Baptist State Convention about the Disaster Relief that goes on during the year.

24. **Memorials** - Janice Burnette gave the report on page 27. As each church's deceased members' names were read, their members present stood in reverent honor of their memory. The 2004 Annual Minutes Book will be dedicated in honor of Hazen and Virginia Pangle.

25. **Miscellaneous** - Gracella Morris reported that 67 messengers and 26 visitors signed in at registration time. Additional people came in after the service started.

### MISSIONS

26. **Scotts Creek Baptist** - Janice Burnette reported that 7 from their church had gone with a Waynesville nurse to Moldova. They worked in schools, alcohol rehabilitation units, homes, and parks.

27. **Hamburg & Cashiers Baptist** - Rev. Matt Ledbetter reported their churches had went to Florida to help 8 families in Disaster Relief after Hurricane Charley. They have gone numerous times to help in Clyde, NC where flooding from Hurricanes Frances and Ivan caused much damage. They will be going to Northern Honduras very soon.

28. **Cashiers Baptist** - Rev. Art Fowler reported they again went on a puppet tour in the South and touched many lives. He brought a collage of pictures.

29. **Lovedale Baptist** - C.L. Proffitt has spent 7 weeks working with hurricane victims. He spent one week in Florida and then has spent the last 6 weeks working to feed people in Clyde. The need is great!  
30. The Knowles Family presented special music.

31. Rev. Ray Knowles of New Savannah Baptist Church brought scripture and sermon from Hebrews 12:14-29.

32. Rev. Cecil Frady of East Fork Baptist Church led in the Benediction.

### SECOND SESSION, FRIDAY, OCTOBER 15, 2004

1. Mt. Pleasant Baptist Church hosted the second session of the 175<sup>th</sup> Annual Meeting of the Tuckaseegee Baptist Association. A delicious meal was served at 4:00 p.m. A total of 84 present: 52 Messengers and 32 visitors representing 23 churches.

2. Rev. Art Fowler, Moderator, welcomed everyone and called the meeting to order.

3. Rev. Jack Robinson welcomed everyone to Mt. Pleasant Baptist Church and read Acts 20:17-21.

4. Emery Brooks had special music.

5. Emery Brooks led the congregation in singing, "Standing on the Promises".

### REPORTS

6. **West Care Health System Chaplaincy** - Rev. Mike Farmer gave Ron Allen's report on page 37.

7. **Truett Baptist Camp** - Richard Robinson reported that the summer of 2005 will be his last year before he retires. He has been director for 20+ years. His annual report is on page 35.

8. **United Christian Ministries** - Kathy Cross reported they are counting their blessings. Her report is on page 36. They continue to assist with food, heating oil and gas, utilities, transportation, overnight lodging, past due rent, and medical/prescriptions. They continue to need volunteers and financial support.

9. **Baptist Children's Homes** - Rev. Lloyd Fish introduced Rev. Lewis Smith who will be working in the Southwestern Mountains for Baptist Children's Homes. He thanked everyone for all the support our association has shown to BCH. He retired in June and has been working with Webster Baptist.

10. **Baptist Children's Homes** - Rev. Lewis Smith reported that even though they had unfortunately had to close 7 cottages in 2003, they plan to reopen Moody Home the Fall of 2004. Their goal is to reopen them all in 2005. Another food drive is planned for April of 2005. A video is being sent to all of the

churches with a 8-minute story about Patricia to promote the Thanksgiving BCH offering this year. The BCH is now working to build homes for their new Developmental Disabilities Ministry for those who are "forever children".

11. **Jackson County Bible Club** - Rev. Steve Alexander gave his report on page 32. Please support the youth through time, talents and money. It is so important to reach these youth. There are no teachers for Cullowhee Valley Elementary and Smoky Mountain High.

12. **Spanish Mission (El Centro Del Senor)** - Rev. Robert Fernandez gave a report on the mission that started 3 years ago this November. They work with Mexicans who are mostly here for only a short time. They have goals to introduce them to Jesus Christ and disciple them to be missionaries. On Sundays they meet for Bible Study, worship and fellowship at the fellowship hall of the Cullowhee Methodist Church. They have prayer meetings on Thursday night at Scotts Creek Baptist Church. They have had five baptized and will be having two baptized really soon. He offered many ways that we can help through praying, serving food on Sundays, giving money to buy clothes and medicine, or buying Christmas gifts.

13. **Jackson County JESUS Video Project** - Rev. Art Fowler reported that videos were mailed to every home in Jackson County. A phone survey had followed this mailing in the past weeks. They are now closing this interdenominational project in Jackson County. Please continue to pray that the videos will reach people for Christ. Thank you for the support of those in the association.

14. Emery Brooks led the congregation in singing "Heavenly Sunlight."

15. Gracella Morris reported that on Thursday 72 messengers and 27 visitors were present with 22 churches represented. On Friday 48 messengers and 30 visitors were present. Numbers changed a little after closer inspection of the registration materials.

16. **Executive Committee** The moderator pointed to the executive committee report on pages 13 and 14. It is a summary of the executive meetings held throughout the year.

17. **Personnel Committee** - Rev. Gerald Morris said they were looking for a part-time interim director of missions. He thanked all the churches who had returned the surveys regarding the director of missions and association. Several candidates had sent resumes, but none had felt right. One resume has just been received and a call showing interest in the past week. He will be rotating off this committee for this year.

18. **Nominating Committee** - Brad Stillwell presented Rev. Cory Boone as youth director and himself as the singles director for the new year. It was approved.

19. **Place & Preacher Committee** - Brad Stillwell moved that next year's annual meeting be held at Promise Land Baptist Church with Rev. Dennis Burrell speaking the first night. The second night's meeting would be at Faith Baptist Church with Rev. Avery Brown speaking. The report was on page 16. It was approved.

20. **Stewardship** - Rev. Mike Moore moved that the 2005 budget presented the previous session be approved. Page 22. No discussion followed and it passed.

21. **Resolutions Committee** - Rev. Gene Hawkins moved that a well deserved resolution of sincere appreciation be adopted. Whereas Hyatts Chapel Baptist Church and Mt. Pleasant Baptist Church have hosted sessions of the Tuckasegee Baptist Association and have provided wonderful meals and abundant hospitality to the messengers of the said association, and

Whereas Rev. Larry Bryson and Rev. Ray Knowles have brought, and we confidently trust Rev. Mike Moore will bring challenging and edifying messages, and

Whereas many fellow laborers have presented uplifting reports of Christian ministry, and

Whereas once again Rev. Art Fowler has so capably presided over these sessions and other meetings throughout the year, and

Whereas our dutiful and resourceful Associational Clerk, Gracella Morris, also served often above and beyond the call of duty and

Whereas our elected officers and members of various committees have served this association well,

Be it therefore resolved that we express heartfelt appreciation to all who have made these sessions of the Tuckasegee Baptist Association a definite success, and to quote God's Holy Word in Psalm 133:1

*Behold, how good and how pleasant [it is] for brethren to dwell together in unity!* And notice the

Be it therefore resolved that we express heartfelt appreciation to all who have made these sessions of the Tuckasegee Baptist Association a definite success, and to quote God's Holy Word in Psalm 133:1 *Behold, how good and how pleasant [it is] for brethren to dwell together in unity!* And notice the exclamation mark. It was approved.

22. Emery Brooks then led the congregation in singing "Leaning on the Everlasting Arms".

23. The Senior Adult Choir then sang.

24. Rev. Mike Moore, pastor from New Hope Baptist, gave the Scripture and sermon. He spoke from Matthew Chapter 5 about how each Christian should be the salt of the earth.

25. Emery Brooks then led the congregation in singing Amazing Grace without music.

26. Rev. Terry Jenkins closed with the benediction.

## 2004 Messengers List

**Big Ridge:** Not represented

**Buff Creek Baptist:** Gracella Morris, Rev. Gerald Morris, Eloise Shuler

**Calvary:** Rev. Dennis Burrell

**Cashiers:** Rev. Art Fowler

**Cullowhee Valley:** Not represented

**Dicks Creek:** Not represented

**East Fork:** Rev. Cecil Frady, Jean Frady, Carlin Cabe, Alice Cabe

**Faith:** Rev. Gene Hawkins, C.L. Proffitt

**Greens Creek:** Rev. John Kinsland, Allen Garner, Jo Ann Garner, Joyce Green, Eula M. Frizzell

**Hamburg:** Rev. Matt Ledbetter, David Johnson, Brad Hughes, Faye Harris, Jeff Davis, Verner Rice

**Hyatts Chapel:** Michael Moore, Justin Hunt

**Jarrett Memorial:** Rev. Cory Boone

**Liberty:** Not represented

**Little Savannah:** Rev. Kent Lowdermilk, Kenny Frizzell

**Locust Field:** Betty Greene, Cecil Cochran, Virginia Pangle, Waymon Pangle

**Long Branch:** Rev. Avery Brown, David Dalton, Roy Dalton, Mildred Wilson, Steve Lillard, Harold Wilkey, Ruth Wilkey

**Lovedale:** Rev. Mike Farmer, Cathy Farmer, Hazel Monteith, David Monteith, Lois Monteith, Freda Queen

**Lumberton:** Not represented

**Moses Creek:** Rev. Robert Fernandez, Max Cook

**Mt. Pleasant:** Rev. Jack Robinson, James Conner



**New Hope**: Rev. Mike Moore, Arnold Brooks, Steven Buchanan, Earl Hooper, Jean Hooper, Donal Shuler, Walter Young, Ray Anderson, Jemima Tucker, Gail Anderson, Brad Stillwell (Alt), Mildred Harris (Alt), Craig Tucker (Alt), Clarence Taylor (Alt)

**New Savannah**: Rev. Ray Knowles, Ruth Knowles, Sean Bryson, Kitty Bryson, Mildred Buchanan

**Ochre Hill**: Margaret Blanton

**Old Savannah**: Not represented

**Pine Creek**: Not represented

**Promise Land**: Rev. Larry Bryson, Kay Bryson

**Rockdale**: Lindon Allen, Gail Allen, Rev. Ray Fox, Jennie S. Miller

**Scotts Creek**: Visitor (Janice Burnette)

**Shoal Creek**: Not represented

**Sols Creek**: Visitor (Lorena Ensley)

**Speedwell**: Michael Coggins, Dennis Coggins, Edna Coggins, Rev. Clemmey Queen, Carley Queen

**Tilley Creek**: Not represented

**Unity**: Not represented

**Webster**: Rev. Lloyd Fish, Lee Roy Hall, Norman Paris

**Wilkesdale**: Rev. Terry Jenkins, Elizabeth Jenkins, Betty Morris

**Zion Hill**: Not represented

## Committee on Committees Report 2004-2005

### *Articles & By-Laws*

- 05 Earl Hooper, New Hope
- 06 Russ Bauer, Moses Creek - Chair
- 07 Cance Carnes, Hyatts Chapel

### *Associational Missions Development Council*

- 05 Brenda Buchanan, Hamburg
- 06 Margaret Gunter, Hyatts Chapel
- 07 Betty Green, Locust Field

### *Building & Grounds*

- 06 Arthur Stephens, Moses Creek
- 06 Michael Coggins, Speedwell
- 07 Eddie Pittman, Ochre Hill

### *Credentials*

- 05 Clemmey Queen, Speedwell
- 06 Betty Green, Locust Field
- 06 Avery Brown, Long Branch
- 07 Arthur Stephens, Moses Creek
- 07 Cecil Frady, Lovedale - Chair

### *Evangelism*

- 05 Barry Foxx, New Savannah
- 06 Larry Bryson, Promise Land
- 07 Lindon Allen, Rockdale
- 07 John Kinsland, Greens Creek
- 07 Gerald Morris, Buff Creek

### *Stewardship*

- 05 Roy Haskett, Tilly Creek
- 06 Gail Allen - Rockdale
- 07 Mike Moore, New Hope - Chair
- 07 Mike Farmer, Lovedale
- 07 Lee Roy Hall, Webster  
Jennie Miller, Treasurer

### *Memorials*

- 05 Shirley Conner, Unity
- 06 Hazel Monteith, Lovedale - Chair
- 07 Eloise Shuler, Buff Creek

### *Nominating*

- 05 Jason Watson, Moses Creek
- 05 Randy Crawford, Faith
- 05 Brad Stillwell, New Hope, Chair
- 06 Douglas Denny, Rockdale
- 06 Avery Brown, Long Branch
- 07 Bob Parker, Lovedale
- 07 Carlos Gunter, Hyatts Chapel

### *Order of Business*

- 05 David Montieth, Lovedale
- 06 Larry Bryson, Promise Land
- 07 Dan Bryson, Liberty

### *Ordination*

- 06 Gene Hawkins, Faith - Chair
- 06 Kent Lowdermilk, Little Savannah
- 06 Robert Fernandez, Moses Creek
- 07 Al Cauley, Lumberton
- 07 Ray Fox, Rockdale

### *Personnel*

- 05 Kent Moore, Hyatts Chapel
- 05 Virginia Pangle, Locust Field
- 06 Don Shuler, New Hope
- 06 Terry Jenkins, Wilkesdale
- 06 Matthew Ledbetter, Hamburg
- 06 Gene Hawkins, Faith
- 07 Allen Garner, Greens Creek

### *Place & Preacher*

- 05 Charles Carnes, Locust Field
- 07 Brad Stillwell, New Hope
- 07 Dennie Mathis, Mt. Pleasant

Respectfully Submitted,  
C.L. Proffitt, Chair  
Kenneth Miller  
Ray Buchanan

## Appointed Committee 2004-2005

### *Resolutions Committee*

Gene Hawkins, Faith  
Laura Brown, Long Branch  
Clemmey Queen, Speedwell

### *Committee on Committees*

C.L. Proffitt, Faith - Chair  
Kenneth Miller, Rockdale  
Ray Buchanan, Jarrett Memorial

# Nominating Committee Report, 2004-2005

## General Officers

Moderator .....	Art Fowler
Vice Moderator .....	Mike Moore
Clerk .....	Gracella Morris
Assistant Clerk .....	Betty Greene
Treasurer .....	Jennie Miller
Assistant Treasurer .....	Arthur Stephens
Historian .....	Mildred Wilson
Parliamentarian .....	Clemmey Queen
Assistant Parliamentarian .....	Roy Dalton

## Program Leaders

Sunday School Director .....	Arnold Brooks
Discipleship Director .....	Steve Lillard
Music Director .....	Emory Brooks
Musician .....	Betty Greene
Trustees .....	Bob Parker (05) Carlos Gunter (06) Arnold Buchanan (07)
Deacons' Chairman .....	
Youth Director .....	Cory Boone
Stewardship Director .....	Mike Moore
Vacation Bible School Director .....	Betty Greene
Brotherhood Director .....	Lindon Allen
Senior Adult Director .....	Eloise Shuler
Singles Ministry Director .....	Brad Stillwell

## Associational Representatives

Truett Camp .....	Robert Sutton
Baptist Children's Homes of NC .....	Gerald Morris
Baptist Retirement Homes of NC, Inc. ....	Earl Hooper
Biblical Recorder .....	Ronnie Henderson
Christian Higher Education .....	Nancy Sherrill
Annuity Board .....	Cecil Frady
S.W.A.R.M. ....	
NC Baptist Hospital, Inc. ....	

Respectfully submitted by:  
Brad Stillwell, Chairperson  
Bob Parker  
Avery Brown  
Carlos Gunter  
Jason Watson  
Arnold Brooks, Sunday School Director  
Art Fowler, Ex Officio

## **Executive Committee Report**

### **Gracella Morris, Clerk**

**October 6, 2003** - The Association met at the Baptist Center for the regular quarterly meeting. 20 executive committee members and 1 member church visitor represented 11 churches. Moderator Art Fowler presided. Emory Brooks led in singing of hymns. Rev. Terry Jenkins, pastor at Wilkesdale Baptist Church, gave the devotional. The Clerk's and Treasurer's reports were given by Gracella.

C.L. Proffitt presented the Committee on Committees report. The following replacements were approved: (Credentials) Rev. Clemmey Queen replaced Rev. Randy Hyatt; (Ordination) Rev. Robert Fernandez replaced Rev. John Swanger; (Articles & By-Laws) Earl Hooper replaced Art Keener; (Evangelism) Lindon Allen replaced Steve Alexander; (Nominating) Randy Crawford replaced Tim Mathis; (Place & Preacher) Dennie Mathis replaced Chas Mathis.

Rev. Art Fowler presented the Resolutions Committee Report. It was approved that Rev. Gene Hawkins replace Rev. Rich Peoples and Rev. Clemmey Queen replace Max Cook. Rev. Fowler then presented an update concerning the Personnel Committee. They will be conducting a church survey and compiling a director of missions' profile.

Brad Stillwell presented the Nominating Committee Report. The following replacements were approved: Arthur Stephens replaced Dean Coward as assistant treasurer and Rev. Clemmey Queen replaced Rev. John Swanger as Parliamentarian. Brad also presented the Place and Preacher Report: New Hope Baptist Church will be hosting the annual meeting on October 16 instead of Balsam Baptist and Rev. Matt Ledbetter will be the speaker on October 17 instead of Rev. John Swanger and the alternate speaker will be Rev. Johnny Norris. The meeting was adjourned after announcements and prayer.

**January 5, 2004** - The Association met at the Baptist Center for the regular quarterly meeting. 17 executive committee members and 1 member church visitor represented 13 churches. Moderator Art Fowler presided. Emory Brooks led in singing of hymns. Rev. Kent Lowdermilk, pastor at Little Savannah Baptist Church, gave the devotional. The Clerk's and Treasurer's reports were given by Gracella.

Rev. Art Fowler of the Personnel Committee thanked all the churches for responding to the surveys sent out by the committee. He reported that the surveys basically showed that age was not a big factor in hiring an interim part-time director of missions. A person with a sound theological background and pastoral experience were the major factors to determine what person to recommend as director of missions.

Rev. Fowler and Rev. Bill Sutton updated everyone on the progress of the JESUS Video Project. Jackson County reached their goal of \$51,000 in December with the help of three other counties. They will be able to purchase the videos for \$2.75 and mail them in the spring. This will provide good opportunities for follow up during the summer and fall when part-time residents will be in Jackson County.

Rev. Harry Vance said that according to the Articles & By-Laws, the moderator could not serve as chairperson of the personnel committee. The Moderator was an ex-officio member of all the committees. Art said the Personnel Committee would address that at their next committee meeting. After announcements and prayer the meeting was adjourned.

**April 5, 2004** - The Association met at the Baptist Center for the regular quarterly meeting. 22 executive committee members, 1 member church visitors and 1 visitor represented 13 churches. Moderator Art Fowler presided. Emory Brooks led in singing of hymns. Rev. Al Cauley, pastor of the Lumberton Baptist Church led the devotion. The following reports were given: The Clerk's and Treasurer's reports

were presented by Gracella and approved. Rev. Art Fowler said that the Personnel Committee had elected Rev. Gerald Morris as chairperson. Nelda Reid, Co-WMU Director, presented the WMU report. Eloise Shuler presented the Senior Adult Report. Brad Stillwell (Chair of the Nominating Committee) presented Rita Fowler's name as Associational Representative to S.W.A.R.M. and it was approved. Art and Rev. Bill Sutton updated everyone on the JESUS Video Project. The videos are to be mailed on April 12-16 to every resident. Those interested in being involved in the follow up needed to meet afterwards with Art. Gracella then presented the 2005 Program Agreement that requested a supplement of \$3,000 from the Baptist State Convention for the Interim Director of Missions and it was approved.

Rev. Clemmey Queen moved that a small trailer owned by the association be sold. It was recommended that it be handled through the trustees and it was seconded by Rev. Harry Vance. It was approved by the executive committee. Clemmey had been approached by someone wanting to buy the trailer. Clemmey and most of the other executive committee members had no knowledge of the trailer.

Rev. Gerald Morris, chairperson of the personnel committee, reported that the committee had about narrowed their decision on who to present as prospective director of missions. The prospective DOM wants to talk to him before meeting with the other leaders of the association. As soon as something is decided he will let the executive committee know.

Rev. Mike Farmer presented information about a Protest that will be held at Western Carolina University. The best action is considered to leave them alone to give them as little attention as possible. Gene McAbee could be contacted for more information.

Rev. Harry Vance brought up how important it is to support the rest home ministry that was started by the interdenominational pastors' conference. It is very important to keep your commitment to the residents at the rest homes each Sunday. The list is compiled of several churches in Jackson County (not just in this association). The new list would be mailed with the May Newsletter. The new list is also on the Association's web page. Gerald said he would also help any church have a page on the internet. After announcements and prayer the meeting was adjourned.

**July 12, 2004** - The Association met at the Baptist Center for the regular quarterly meeting. 14 executive committee members represented 6 churches. Vice-Moderator Rev. Mike Moore presided. Emery Brooks led in singing of hymns. Rev. Ray Fox, Pastor of the Rockdale Baptist Church gave the devotion. The following reports were given: The Clerk's and Treasurer's reports were presented by Gracella and approved.

Rev. Gerald Morris presented a report about the Associational Youth and Buff Creek booth at the July 3<sup>rd</sup> Festival on Main Street in Sylva. 10 gallons of water, animal balloons, JESUS Videos and DVDs, New Testaments and tracts were given away. A six foot cross was on display also.

The old business of selling the HaulMark trailer was again brought to the floor. Rev. Gerald Morris moved to have Rev. Clemmey Queen speak to Gene Middleton (who donated the trailer) about if he wanted the association to return it to him since we were considering selling it. If Mr. Middleton does not want it back, Gracella should advertise for sealed bids in the August issue of *The Baptist Herald*. The sealed bids must be received on or before closing on September 1 and will be opened in a called meeting of the Stewardship Committee soon thereafter. The Stewardship committee is authorized to sell it to the highest bidder. The motion was approved.

It was approved that Sunshine Cleaners & Restoration clean the carpets of the association building for \$120. This included cleaning the carpets in the large foyer and the four connecting rooms.

It was approved that the John Deere riding mower and utility cart be sold by sealed bids to the highest bidder after it was advertised in the August issue of *The Baptist Herald*. The sealed bids must be received on or before closing on September 1<sup>st</sup> and opened by the Stewardship Committee. After announcements and prayer the meeting was adjourned.

**ASSOCIATIONAL CALENDAR OF ACTIVITIES  
2004-2005**

**OCTOBER 2004**

**Emphasis: Cooperative Giving**

- 4 **Executive Committee Meeting, 7:30 pm, Baptist Ctr**
- 10 World Hunger Day
- 14 **Associational Annual Meeting, Hyatts Chapel**
- 15 **Associational Annual Meeting, Mt. Pleasant**
- 31 Daylight Savings Time Ends

**NOVEMBER 2004**

- 1 Baptist Women's Day of Prayer
- 7 **WMU Leadership Team, Baptist Ctr**
- 9 **Pastors' Conference, 7:00 pm, Baptist Ctr**
- 7-14 Royal Ambassador Week in the Churches
- 14 **WMU International Mission Study, Baptist Ctr**
- 15-17 Baptist State Convention, Winston-Salem
- 14-21 Week of Prayer and Special Offering for North Carolina Baptist Children's Homes
- 23-24 **Office Closed for Thanksgiving Holiday**
- 25 Thanksgiving Day
- 28-Dec 5 Week of Prayer for International Missions and Lottie Moon Christmas Offering

**DECEMBER 2004**

- 7 **Pastors' Conference, 7:00 pm, Baptist Ctr**
- 10 **Senior Adults Christmas Party, Baptist Ctr.**
- 25 Christmas
- 27-29 **Office Closed for Holidays**

**JANUARY 2005**

- 1 New Year's Day
- 3 **Executive Committee Meeting, 7:30 pm, Baptist Ctr**
- 4 **Pastors' Conference, 7:00 pm, Baptist Ctr**
- 23 Baptist Men's Day

**FEBRUARY 2005**

- 6-13 Week of Prayer and Special Offering for North Carolina Baptist Retirement Homes
- 7-8 NC State Evangelism Conference, Winston Salem
- 11 **Senior Adults Valentine's Day Party, Baptist Ctr**
- 13 **WMU Focus on WMU, Baptist Ctr, 2:00-4:00**
- 14-20 WMU Focus Week
- 14 **Pastors' Conference, 7:00 pm, Baptist Ctr**
- 14 Valentine's Day
- 20 North Carolina Baptist College Day
- 20 Volunteers in Missions Day

**MARCH 2005**

- 6 **North American Mission Study, Baptist Ctr**
- 6-13 Week of Prayer for North American Missions and Annie Armstrong Easter Offering
- 14 **Pastors' Conference, 7:00 pm, Baptist Ctr**
- 15-16 New Ministers' Orientation
- 20 **Twenty-first Annual Associational Singing**
- 23 Office Closed for Holiday

- 25 Good Friday
- 27 Easter Sunday

**APRIL 2005**

- 4-8 Jackson County School's Spring Break
- 2 Royal Ambassador Car Race Day
- 3 Daylight Savings Time Begins
- 4 **Executive Committee, 7:30 pm, Baptist Ctr**
- 10 Cooperative Giving Day
- 11 **Pastors' Conference, 7:00 pm, Baptist Ctr**
- 15-17 Missions Extravaganza - Ridgecrest
- 17 Earth Stewards Sunday

**MAY 2005**

- 1-8 Week of Prayer and Offering for Baptist Hospitals
- 2 Region 10 Baptist Men Mission Rally
- 8 **Mother's Day**
- 9 **Pastors' Conference, 7:00 pm, Baptist Ctr**
- 6 **Senior Adults Mother's Day Party, Baptist Ctr.**
- 30 **Office Closed for Memorial Day**

**JUNE 2005**

- 13 **Pastors' Conference, 7:00 pm, Baptist Ctr**
- 13-17 Truett Camp, Girls ages 8-18 years, Hayesville, NC
- 20-24 Truett Camp, Girls ages 8-18 years, Hayesville, NC
- 19 Father's Day
- 20-22 Southern Baptist Convention -Nashville, TN
- 27-Jul 1 Truett Junior Music Week (Grades 5-8), Hayesville

**JULY 2005**

- 4 **Office Closed for Independence Day**
- 11 **Executive Committee 7:30 pm, Baptist Ctr**
- 10-15 Truett Youth Music Wk. (9<sup>th</sup> Gr. - 20 yrs, Hayesville, NC
- 11-13 GA/Mother Daughter Camp, Camp Mundo Vista
- 13-15 GA/Mother Daughter Camp, Camp Mundo Vista
- 15-16 WMU Assn. Leadership Team Training, Fruitland
- 18-22 Truett Camp, Boys ages 8-18 years, Hayesville, NC

**AUGUST 2005**

- 8 **Pastors' Conference, 7:00 pm, Baptist Ctr**

**SEPTEMBER 2005**

- 5 **Office Closed for Labor Day**
- 9-10 Sunday Sch & Church Admin. Leadership Tr., Ridgecrest
- 11-18 Week of Prayer & Special Offering for NC Missions
- 12 **Pastors' Conference, 7:00 pm, Baptist Ctr**

**OCTOBER 2005**

**Emphasis: Cooperative Giving**

- 3 **Executive Committee 7:30 pm, Baptist Ctr**
- 9 World Hunger Day
- 10 **Pastors' Conference, 7:00 pm, Baptist Ctr**
- 13 **Associational Annual Meeting, Promise Land**
- 14 **Associational Annual Meeting, Faith**
- 30 Daylight Savings Time Ends

## **Place and Preacher Report** **Annual Meeting October 13<sup>th</sup> and 14<sup>th</sup>, 2005**

Thursday, October 13.....Promise Land Baptist Church . . . . . Rev. Dennis Burrell, Speaker  
Rev. Mike Farmer

Friday, October 14.....Faith Baptist Church . . . . . Rev. Avery Brown, Speaker  
Rev. Ray Fox

---

## **Sunday School Report 2004**

### Regional 10 Fall Church Leadership Training

The Leadership Training event was held at Andrews First Baptist Church on September 27, 2004. The Truett Baptist Association, Rev. Mitchell Shields, Director of Missions, sponsored the event. Some of the most highly qualified leaders from the Baptist State Convention of North Carolina were there. The event included specific age-group teaching methods for preschool, children, youth and adults.

I attended the Pastors, Deacons, Sunday School Directors, and Teachers class. Teaching the class was Robert Stewart (Mr. Sunday School), formerly of the Baptist State Convention of North Carolina Teaching/Reaching Team (25 years).

I would like to see such an event as this sponsored by the Tuckasegee Baptist Association in the near future. Will you help us pray for this to happen?

*And whatsoever ye shall ask in my name, that will I do, that the Father may be glorified in the Son. If ye shall ask anything in my name, I will do it. (John 14:13-14)*

Plan to attend the **Sunday School Leadership Training Conference for November 8, 2004, 6:30 p.m. at Pole Creek Baptist Church**, 96 Snow Hill Church Road, Candler, N.C. (828) 667-4053. Please call if you need any more information (828) 586-8386.

Our First Annual Sunday School Leadership meeting was held at the Baptist Association Building on August 28, 2004.

### **Upcoming Events 2004-2005** **2<sup>nd</sup> Annual Sunday School Leadership Meeting** **Tuckasegee Baptist Association Leadership Team (new)**

*Gather the people together, men, and women, and children, and thy stranger that is within thy gates, that they may hear, and that they may learn, and fear the Lord your God, and observe to do all the words of this law.*

*And that their children, which have not known any thing, may hear, and learn to fear the Lord your God, as long as ye live in the land whither ye go over Jordan to possess it. (Deuteronomy 31:12-13)*

Thank you. See you in Sunday School...

Submitted by, Arnold Brooks

## SENIOR ADULT REPORT

- Oct. 17, 2003      Rockdale Baptist Church - Sang at the Annual Associational Meeting - 14 members present with 7 churches represented.
- Dec. 12, 2003      Baptist Center - Christmas Program - Carlin Cabe gave the devotion. Ray Knowles played the guitar and sang. We had a covered dish lunch and exchanged gifts. 21 present with 9 churches represented.
- Feb. 13, 2004      Baptist Center - Valentine's Program - Buzz Milosh entertained for us by playing the guitar and singing. I gave everyone chocolate Valentine candy. We had a good lunch and fellowship. 20 present with 10 churches represented.
- May 7, 2004      Baptist Center - Mother's Day Program - Virginia Pangle gave the devotion. Ronnie Waldroup played the piano and sang for us. Gifts were given to the oldest mother and the youngest mother. Regina Fisher was the oldest and Virginia Pangle was the youngest. 21 present and 10 churches represented.
- May 2004      Buff Creek Baptist Church - Revival - Approximately 12 members with 9 churches represented.

With Love in Christ,  
Eloise Shuler



## MUSIC REPORT 2004

My Fellow Brethren,

Once again we come to the end of another chapter in the Tuckasegee Baptist Association. This past year has brought much joy to many but sorrow to others. We came together this past year in order to join our hearts for a time of worship in song. Many churches let me know that Christ's name was praised during the associational singing in which they attended. Let me thank you from the bottom of my heart for your participation in this event.

Looking back on days past, I remember going to singings on Saturday night and Sunday night. Churches would gather to raise their voices together unto the King of Kings. There was no type of competition in those days only praise to the Lamb of God and a time to meet with fellow Christians. Nowadays only a hand full of churches gather on a monthly basis to sing from their hearts the praises of God. Let us my friend not forget that it is God our Heavenly Father which gives unto us the ability to sing. Let us sing from within the depth of the soul. Let God's praises roll from thine lips so generations to come may be able to say Psalm 89:1.

I will sing of the mercies of the Lord forever; with my mouth will I make known thy faithfulness to all generations.

Thank you and God Bless,  
Music Director  
Emery Brooks

The Annual Singing of the Tuckasegee Baptist Association was held Sunday, March 21st. Host churches, their pastors, participating churches, and their pastors are listed below.

ROCKDALE: Rev. Ray Fox  
Attendance: 95 Collected \$302.50  
Buff Creek: Rev. Gerald Morris  
Mt. Pleasant: Rev. Frank Brooks  
(This amount mailed by Rockdale)

NEW SAVANNAH: Rev. Ray Knowles  
Attendance: 56 Collected \$233.00  
Dicks Creek: Rev. Rick Conner  
Calvary: Rev. Dennis Burrell

EAST FORK: Rev. Brian Bishop  
Attendance: 50 Collected \$177.00  
Long Branch: Rev. Avery Brown

PROMISE LAND: Rev. Larry Bryson  
Attendance: 65 Collected \$130.00  
Lovedale: Rev. Mike Farmer

SPEEDWELL: Rev. Clemmey Queen  
Attendance: 100 Collected \$427.25  
New Hope: Rev. Mike Moore  
Moses Creek: Rev. Robert Fernandez

JARRETT MEMORIAL: Rev. Cory Boone  
Attendance: 80 Collected \$110.25  
Locust Field: Rev. Charles Carnes

GREENS CREEK: Rev. Harry Vance  
Attendance: 108 Collected \$181.00  
Webster: No Pastor at that time.  
(Visiting Church) Black Mountain: Rev. Roger Stewman

This year's offering was again designated for the Baptist Children's Homes. The total collection was \$1,561.00.

## Youth Annual Report 2003-2004

This year we were able to participate in two events designed for our youth. It was exciting and encouraging to see youth of all ages engaged in fellowship and service together.

On May 1, 2004 Jim Noah of *Noah's Christian Mime and Storytelling* came to the Baptist Center. There were approximately 15 people present with three churches of the association represented. Jim Noah used puppetry and music to tell biblical stories and truths. This time was followed by making small crafts and refreshments.

During the first week of July 2004, youth of the association participated in a state wide event called CrossWalk of North Carolina. CrossWalk involves challenging youth to model the life of Christ by doing what they think Jesus would do if He were to visit their community today. Using Luke 9:23 as a creed, Florida Acteens youth in 1996 began this movement by building an actual cross and carrying it through their community. Since that time, a cross has traveled through several other states to be used to promote mission work among other Acteens and youth groups. Our state event is sponsored by the NC WMU.

Our association received the cross on June 27<sup>th</sup>. Youth in the association joined with an annual July 4<sup>th</sup> mission project of Buff Creek Baptist Church. The project involved providing free biblical materials and activities for families during Sylva's Independence Day celebration downtown. On Wednesday, June 30<sup>th</sup> youth and youth leaders met at Buff Creek Church for a bible study to discuss the importance of living out the cross and to organize materials for the booth downtown.

On Saturday, July 3<sup>rd</sup>, the cross was transported to downtown Sylva and displayed with a booth represented by Tuckaseegee Baptist Association. The booth included free Bibles, tracts, Jesus Videos and DVDs, and bible story coloring books. Youth and others also gave out free animal balloons, face painting, water, and salvation bracelets.

A total of approximately 41 people participated in CrossWalk for the association. The associational website received several more hits after this event. This time provided youth with the opportunity to interact with their community and experience the challenge of following in Jesus' footsteps.

Submitted by Jessie Stewart

## 2004 VBS REPORT

RICKSHAW RALLY, ( racing to the Son) was LifeWay's material for 2004. It was a thrill to pass by Churches and see their VBS signs, LAVA LAVA ISLAND, ( where God's love flows) SON GAMES, ( God's team in action) POWER UP ( Jesus is able to power you up). This is a short list of the material used, all telling Kid the most important thing they will ever hear, JESUS loves me. VBS has a most significant impact in the lives of unchurched Kids and Adults, the only place where some will ever hear the meaning of John 3:16. More people attend and more people are saved in VBS than any other event in the entire SOUTHERN BAPTIST CONVENTION.

I would like to encourage all VBS Directors to file a report as soon as VBS is over, one to the Association, one to State and one to Nashville

The SBC LifeWay material has been standard for most of the churches in our Association until recent years. In 2005 LifeWay will be offering a choice of two sets of material, one "Ramblin' Road Trip: Which Way Do I Go?" A cross country trip from Destination Worship, to thankfulness, to Salvation, to Belief and finally to Destination Obedience. VBS Motto: "Show Me! Teach Me! Guide Me!" The printed Scriptures in this material are KJV and another translation if you wish to use it

Responding to requests from churches LifeWay offers a second line of VBS for 2005. "Club VBS: Beach Blast Celebrating God's Faithfulness." Motto: God is Faithful. I can dig it. Children will Dig into God's Promise, Provision, Power, Plan and into God's Presence. (Babies through older children) Based on 1 Corinthians 1:9. No printed Scriptures. Use the translation of your choice. A VBS Clinic is being planned for early 2005.

An incomplete report taken from church profiles: Total enrolment for 11 of 36 churches was 804. . One church (160, 4 professions of faith) another (125 ) another (100) and still another church (15) this church is to be highly commended for realizing the importance of all people. God loves us all in large or small numbers and gave His Son to die for all who will receive Him.

God has given me the opportunity to serve in VBS in some capacity for more years than I care to reveal, one of my daughters was saved in Bible School many years ago and still remains an encourager to me, especially when I feel that Satan is trying to defeat all of my remaining efforts. May God bless as you prepare for 2005 VBS.

Respectfully Submitted  
VBS Director Betty Greene

# WMU ANNUAL REPORT

2003 – 2004

The emphasis for 2003 – 2004 has been “God’s Plan...My Part” and has encouraged each of us to find our place of service in God’s master plan.

## Ongoing Mission Projects

Campbell Soup Labels: Throughout the year, Campbell soup labels have been collected for the Yancy Baptist Association to purchase a van. We sent 1700 labels and are still collecting them. 1.9 million is needed to purchase the van.

Jackson County Bible Clubs: Volunteers and refreshments have been provided to the After School Bible Clubs.

Operation Christmas Child: Franklin Graham’s Samaritan’s Purse ministry of providing Christmas shoeboxes to children around the world is always generously supported in Jackson County churches. Over 1165 shoeboxes were prepared and volunteers delivered our boxes to the pick-up center in Waynesville. Several of our people worked in the Charlotte processing center.

Other ministries: During the year, men, women and children are involved in home-delivered meals, nursing home ministries, United Christian Ministries, Community Table, REACH, AWAKE, Habitat for Humanity, the Spanish mission in Cullowhee, prayer walks, homeless shelters, WRGC radio ministry, puppet ministries, SWARM and many more projects both at home and around the world.

WMU supports and promotes the Weeks of Prayer and special offerings for the North Carolina Missions Offering, Baptist Children’s Homes, Lottie Moon Christmas Offering, North Carolina Baptist Retirement Homes, Annie Armstrong Easter Offering, and the Mother’s Day Offering for the North Carolina Baptist Hospital.

Both the International Mission Study and the North American Mission Study were taught at the Baptist Center.

The Baptist Women’s World Day of Prayer was observed on Monday, November 3.

Focus on WMU, a special annual program celebrating WMU was held at the Baptist Center on Sunday, February 8. The puppet ministry team from Cashiers Baptist Church provided the program. It was inspiring, uplifting and fun.

Several women attended Missions Extravaganza at Ridgecrest this year. Mrs. Sandra James from Sylva First Baptist Church was elected NC WMU State President. Girls attended GA Camp and camps offered at Camp Truett.

Our Annual meeting was held at the Lovedale Baptist Church on Thursday, April 22, 2004. The evening began with a salad supper and fellowship. Annie Harlow, pianist from Sylva First provided the special music and Sarah Davis and Nelda Reid brought a theme interpretation of “God’s Heart... My Hands.” Many wonderful things are going on across our county as people are reaching out to help others in Jesus’ name. WMU remains strongly committed to its goals: Praying for, Giving to, and Doing Missions; Missions Education, and developing a missions lifestyle.

Respectfully Submitted,  
Sarah Davis, Co- Director  
Nelda Reid, Co- Director

TUCKASEIGEE BAPTIST ASSOCIATION PROPOSED BUDGET, 2005

	Expenditures to Date 8/31/04	Actual Expenditures 10/1/02-9/30/03	2004 Budget	Recommended Budget 2005	Increase/ (Decrease)
<b>I. MISSIONS OUTREACH</b>					
Disaster Relief	0.00	0.00	200.00	200.00	
Handyman Ministries	0.00	0.00	200.00	200.00	
S.W.A.R.M.	150.00	150.00	150.00	150.00	
Hosp. Chaplaincy Fund	100.00	100.00	100.00	100.00	
Camp Truett	100.00	100.00	100.00	100.00	
Reach		5,000.00			
United Christian Ministries		5,000.00			
Harris Hospital Chaplaincy		4,000.00			
Highlands-Cashiers Hosp. Chaplain		1,000.00			
Fruitland Baptist Bible Institute		5,000.00			
<b>II. ORGANIZATIONAL MINISTRIES</b>					
Office Supplies	601.53	790.96	1,000.00	1,000.00	
Postage	1,377.86	1,552.00	1,600.00	1,600.00	
Conference & Conv.	0.00	0.00	100.00	100.00	
Sunday School	0.00	0.00	100.00	200.00	100.00
Church Training	0.00	0.00	50.00	50.00	
Youth	23.41	0.00	300.00	300.00	
VBS	0.00	0.00	250.00	250.00	
Evangelism	34.00	0.00	50.00	200.00	150.00
Senior Adults	20.12	40.91	150.00	150.00	
Singles Ministry	0.00	0.00	50.00	50.00	
Music	0.00	0.00	50.00	50.00	
<b>III. PROPERTY SUPPORT MINISTRIES</b>					
Property Insurance	1,430.00	1,113.00	1,200.00	1,450.00	250.00
Telephone	1,752.12	1,719.33	1,850.00	1,925.00	75.00
Electricity	749.93	981.54	1,420.00	1,420.00	
Office Equip & Repairs	1,769.90	1,208.35	1,250.00	1,250.00	
Bldg/Grnds Maint/Upkeep	1,056.24	1,052.96	1,200.00	1,200.00	
Ministry Expense Reimburse.	363.89	1,626.26	2,400.00	2,000.00	(400.00)
<b>IV. EQUIPPING MINISTRIES</b>					
Assoc Leader Train	0.00	40.00	100.00	100.00	
Library & Audiovisuals	5.00	0.00	0.00	50.00	50.00
<b>V. PERSONNEL MINISTRIES</b>					
Director's Salary Package	0.00	0.00	0.00	0.00	
Interim Director Salary	0.00	11,733.75	15,645.00	15,645.00	
Retirement (Interim Director)	0.00	0.00	1,565.00	1,565.00	
Secretary	10,015.38	10,200.00	11,160.00	12,276.00	1,116.00
Retirement (Secretary)	1,001.54	1,020.00	1,116.00	1,228.00	112.00
Company Soc. Sec./Medicare	766.22	780.31	854.00	939.00	85.00
Hon. for Treasurer	0.00	0.00	0.00	0.00	
Hon. for Clerk	150.00	200.00	200.00	200.00	
<b>VI. MISCELLANEOUS</b>					
Assoc. Minutes	624.10	(87.85)	720.00	700.00	(20.00)
Exec Comm Refresh	36.51	28.98	30.00	40.00	10.00
Miscellaneous	3.30	349.39	316.00	200.00	(116.00)
Petty Cash	40.00	20.00	20.00	20.00	
<b>VII. SPECIAL PROJECT</b>					
Special Project Expenses	1,000.00	3,335.00			
Hoyle Endowment	0.00	3500.00			
Annual Singing-Bapt. Childrens Home	1,103.50	836.85			
Truett Camp	125.00	300.00			
Bibles for Deceased	125.00	50.00			
<b>TOTAL EXPENSES</b>	<b>24,524.55</b>	<b>62,741.74</b>	<b>45,496.00</b>	<b>46,908.00</b>	<b>1,412.00</b>
<b>TOTAL RECEIPTS</b>	<b>30,313.19</b>	<b>37,128.71</b>			
Change in Cash Balance	5,788.64	(25,613.03)	(Used funds that were in CDs)		

TUCKASEIGEE BAPTIST ASSOCIATION  
FINANCIAL INFORMATION SUMMARY

EXPENDITURES; Oct. 2003 - Sept. 2004

Receipts; Oct. 2003 - Sept. 2004

I. MISSIONS OUTREACH			
S.W.A.R.M.	150.00	Big Ridge	0.00
Hosp. Chaplaincy Fund	100.00	Buff Creek	1,100.00
Camp Truett	100.00	Calvary	100.00
II. ORGANIZATIONAL MINISTRIES		Cashiers	1,815.00
Office Supplies	690.82	Cullowhee Valley	165.00
Postage	1,462.86	Dicks Creek	110.00
Sunday School	0.00	East Fork	780.00
Church Training	0.00	Faith	1,500.46
Youth	23.41	Greens Creek	2,400.00
VBS	0.00	Hamburg	2,400.00
Evangelism	34.00	Hyatts Chapel	1,200.00
Senior Adults	20.12	Jarrett Memorial	300.00
Singles Ministry	0.00	Liberty	0.00
Music	0.00	Little Savannah	400.00
III. PROPERTY SUPPORT MINISTRIES		Locust Field	200.00
Property Insurance	1,430.00	Long Branch	300.00
Telephone	1,912.54	Lovedale	1,886.44
Electricity	800.19	Lumberton	100.00
Office Equip & Repairs	1,769.90	Moses Creek	0.00
Bldg/Grnds Maint/Upkeep	1,112.48	Mt. Pleasant	240.00
Ministry Expense Reimburse.	404.43	New Hope	4,800.00
IV. EQUIPPING MINISTRIES		New Savannah	100.00
Assoc. Leader. Training	0.00	Ochre Hill	1,100.00
Library & Audiovisuals	5.00	Old Savannah	0.00
V. PERSONNEL MINISTRIES		Pine Creek	0.00
Director's Salary Package	0.00	Promise Land	0.00
Interim Director Salary	0.00	Rockdale	1,300.00
Secretary	10,945.38	Scotts Creek	0.00
Retirement (Secretary)	1,094.54	Shoal Creek	0.00
Matching Soc. Sec./Medicare	837.37	Sols Creek	0.00
Hon. for Treasurer	0.00	Speedwell	360.00
Hon. for Clerk	200.00	Tilley Creek	0.00
VI. MISCELLANEOUS		Unity	0.00
Assoc. Minutes	624.10	Webster	400.00
Exec. Comm. Refreshments	36.51	Wilkesdale	1,040.99
Miscellaneous	0.00	Zion Hill	0.00
Petty Cash	5.49	TOTAL CHURCH	0.00
Sales Tax other than NC	3.3	SUPPORT	\$24,097.89
Bibles for Deceased	150.00	Interest	0.00
VII. SPECIAL PROJECTS		Baptist State Convention	677.91
Annual Singing - Bapt. Children's Home	1,103.50	Other Designated Gifts	10,710.74
Truett Camp	125.00	Private Gifts/Memorials	10.00
Other Designated Project (mission trip)	1,000.00	TOTAL RECEIPTS	\$35,496.54
Haywood Assn. Flood Disaster Relief	3560		
TOTAL	\$29,700.94		

11:09 AM  
09/29/04  
Accrual Basis

**Tuckasegee Baptist Association**  
**Balance Sheet**  
**As of September 30, 2004**

Sep 30, 04

<b>ASSETS</b>	
<b>Current Assets</b>	
<b>Checking/Savings</b>	
<b>1000 - Macon Bank Accounts</b>	
1001- General Checking Account	11,979.77
1002-Deac.-Pastors-Wives-Acct.	1,309.81
<b>Total 1000 - Macon Bank Accounts</b>	<b>13,289.58</b>
<b>1100 - ASSETS</b>	
1200 - CD #27630-26	48,597.52
1300 - CD #27463-12	1,848.16
1400 - CD #27508-12	2,484.33
1500 - CD #27322-12	2,415.85
1600 - CD #27393-12	2,396.70
1700 - Passbook #5384-00	3,382.49
<b>Total 1100 - ASSETS</b>	<b>61,125.05</b>
<b>Total Checking/Savings</b>	<b>74,414.63</b>
<b>Other Current Assets</b>	
1800 - N.C. Sales Tax	8.94
<b>Total Other Current Assets</b>	<b>8.94</b>
<b>Total Current Assets</b>	<b>74,423.57</b>
<b>TOTAL ASSETS</b>	<b>74,423.57</b>
<b>LIABILITIES &amp; EQUITY</b>	
<b>Equity</b>	
<b>5000 - CAPITAL</b>	
<b>5100 - Non-Designated Cash Bal</b>	
	50,500.42
<b>5200 - Designated Cash Balance</b>	
5201- Disaster Relief	854.13
5204 - Hoyle Endowment	22,164.67
5205 - RA's	68.00
5206 - Handy-Man Project	1,125.48
5207 - Missions	5,065.00
5208 - Building and Grounds	2,671.10
<b>Total 5200 - Designated Cash Balance</b>	<b>31,948.38</b>
<b>5300 - Reserve for Reprs &amp; Repl</b>	<b>11,323.03</b>
<b>Total 5000 - CAPITAL</b>	<b>93,771.83</b>
<b>Opening Balance</b>	<b>-3,879.57</b>
<b>Retained Earnings</b>	<b>-21,264.29</b>
<b>Net Income</b>	<b>5,795.60</b>
<b>Total Equity</b>	<b>74,423.57</b>
<b>TOTAL LIABILITIES &amp; EQUITY</b>	<b>74,423.57</b>

## Historical Report 2004

### Calvary Missionary

New Purchases: Stage, Pews, Copy Machine, Chairs for Classrooms, and Vacuum Cleaner

### Greens Creek

New Pastor Appointed June , 2004

### Hamburg

Dedicated New Education Building, May 2004  
Brad Hughes appointed Associate Pastor/Minister of Students.  
Initiated a Team Kid Program for Children Pre-K to 5<sup>th</sup> Grade  
Hosted a Drug Awareness Seminar  
Celebrated 155<sup>th</sup> Anniversary

### Little Savannah

Celebrated their 90<sup>th</sup> Anniversary May 23, 2004

Submitted by,  
Mildred Wilson, Historian



## CHANGES IN THE CHURCHES

### *Churches without pastors in the past year*

Cullowhee Valley  
East Fork  
Greens Creek  
Hyatts Chapel

Jarrett Memorial  
Liberty  
Mt. Pleasant  
Pine Creek

Rockdale  
Shoal Creek  
Webster

### *Pastors Resigning*

Dexter Tolbert, Cullowhee Valley  
Brian Bishop, East Fork  
Mike Dellinger, Webster  
Josh Hyde, Webster  
J. Eugene Smith, Liberty  
Frank Brooks, Mt. Pleasant  
Don Coggins, Big Ridge

### *New Pastors*

Dexter Tolbert, Cullowhee Valley  
Josh Hyde, Associate Pastor at Webster  
Cory Boone, Jarrett Memorial  
Dale Roberts, Hyatts Chapel  
Ray Fox, Rockdale  
Terry L. Taylor, Cullowhee Valley  
Mike Dellinger, Shoal Creek  
Brad Hughes, Associate Pastor/Minister of Students at Hamburg  
Charles Lee, Liberty  
John Kinsland, Greens Creek  
Jack Robinson, Mt. Pleasant  
Tad Thompson, Big Ridge

### *Interim Pastors*

Harry Vance, Greens Creek  
Lewis Smith, Hyatts Chapel  
Gary McCoy, Pine Creek  
Dr. Harold Anderson, Shoal Creek  
Lloyd Fish, Webster  
Cecil Frady, East Fork



# Memorials



## Buff Creek

Mrs. Betty McClure  
Ms. Joyce Crawford Robinson

## Calvary

Mr. John B. Childers - Deacon

## Cashiers

Bonnie Rogers  
Richard Kehn  
Robert Wilson  
Christine Hooper

## Dicks Creek

Mr. Thad Styles  
Mr. Lewis Lanning

## East Fork

Mr. Early Deitz

## Greens Creek

Mr. Van D. Buchanan

## Hamburg

Mr. Tom Smathers  
Mrs. Edna Pressley  
Mr. Frank Nevius - Deacon  
Mr. Michael Johnson  
Miss Debbie Cole

## Hyatts Chapel

Mr. Gentry Gunter - Deacon

## Jarrett Memorial

Mrs. Margie Messer  
Mrs. Ann Jacobs  
Mr. James Hall, Sr.

## Little Savannah

Ms. Janet Morgan  
Mr. Amos Worley

## Locust Field

Jessie Cochran  
Lahoma (Lou) Seagle  
D.C. McMahan

## Long Branch

Mr. Bobby Lillard  
Mr. Millard Gates  
Mr. Allen Lillard  
Mrs. Georgia Ensley - Charter Member  
Mrs. Joyce Denton

## Lovedale

Carl Ward  
Claude Mills

## Moses Creek

Mr. Edgar Hooper

## New Hope

Edna Mae Bryson - Charter Member  
Donald Roberts - Charter Member  
Vinnie Shuler  
Mary Farmer - Charter Member  
Betty Burr Ensley  
Lester Buchanan (Honorary)

## Ochre Hill

Rayburn Cagle  
Jerrie Sue Scott  
Bobby Norman  
Doris Fisher

## Old Savannah

Mr. Aldon Buchanan  
Ms. Marion Franks  
Ms. Geneva Estes  
Mr. Weldon Hall  
Ms. Hester Wilson  
Mr. John Ray Jones  
Ms. Virginia Barker  
Mr. Wesley Allison

## Pine Creek

Mr. Warner Norris  
Mrs. Bertie Houston

## Rockdale

Mrs. Veda B. Sutton

## Wilkesdale

Mr. Joe Connor  
Mrs. Ada Martin  
Mr. C.A. Bryson

## Zion Hill

Rose Webb  
Dorothy Haskett  
Johnny Dillard  
Lester Buchanan  
Myrah Wilson  
Verley Woodard  
Ila Watson  
Gertrude G. Morgan  
W.B. Webb, Jr.

## HISTORICAL TABLE

YEAR	SESSION	PLACE	DATE	MODERATOR	CLERK	DIR OF MISS	PREACHER
1851	22	Jonathan Ck	Oct 10	Joshua Ammons	Z B Allen		Joshua Ammons
1852	23	Scotts Ck	Aug				William Haynes
1894	65	Franklin	Aug 16-19	A H Sims	T C Bryson		G A Bartlett
1895	66	Mt Pleasant	Aug	A H Sims	T C Bryson		
1911	82	Cullowhee	Aug 17-20	Thad Bryson	W L Henson		R L Cook
1912	83	Savannah	Aug				J M Bennett
1916	87	Scotts Ck	Aug 17-19	C C Cowan	H B Jones		J B Smiley
1917	88	Shoal Creek	Aug				R L Cook
1923	94	Lovedale	Aug 16-20	T F Deitz	Hugh Monteith	T F West	W Ross Yokley
1924	95	Qualla	Aug 14-16	T F Deitz	Hugh Monteith	T F West	R L Cook
1925	96	Hamburg	Aug				
1927	98	Tuckasegee	Aug 18-20	T F Deitz	A J Dills		J G Murray
1928	99	Sylva First	Aug				L K Stafford
1929	100	Cullowhee	Aug 15	T F Deitz	W C Reid		T F Deitz
1930	101	Webster	Aug 14	T F Deitz	W C Reid		J G Murray
1931	102	Hamburg	Aug	T F Deitz			W N Cook
1932	103	Shoal Creek	Aug 18	T F Deitz			
1933	104	Scotts Creek	Aug 17-20	T F Deitz	W N Cook		L K Stafford
1934	105	Johns Creek	Aug 16-19	T F Deitz	W N Cook		W C Reed
1935	106	Old Savannah	Aug 15-18	T F Deitz	W N Cook		L K Stafford
1936	107	Lovedale	Aug 13-16	T F Deitz	W N Cook		L H Crawford
1937	108	Sols Creek	Aug 12-15	T F Deitz	W N Cook		Ben Cook
1938	109	Sylva	Aug 18-19	T F Deitz	W N Cook		G N Cowan
1939	110	Zion Hill	Aug 19-20	T F Deitz	W N Cook		W N Cook
1940	111	Moses Creek	Aug 15-16				L H Crawford
1941	112	Ochre Hill	Aug 14-15	T F Deitz			W N Cook
1942	113	Balsam Grove	Aug 13-14	T F Deitz	W N Cook		G C Teague
1943	114	Hamburg	Aug 12-13	T F Deitz	W N Cook		F F Brown
1944	115	Barkers Creek	Aug 17-18	T F Deitz	W N Cook	Gretchen Johnson	W E Pettit
1945	116	Lovedale	Aug 16-17	T F Deitz	W N Cook	Gretchen Johnson	Mark Osborne
1946	117	Cashiers	Aug 15-16	T F Deitz	W N Cook	Clarence Vance	F P Blankenship
1947	118	Wilkesdale East Sylva	Aug 14 Aug 15	T F Deitz	J Bryson	Clarence Vance	Dillard Wood
1948	119	Hyatts Chapel Shoal Creek	Aug 14 Aug 15	C M Warren	J Bryson	Euva Sentelle	Joe Bishop Melvin Snyder
1949	120	Big Ridge Hamburg	Aug 18 Aug 19	C M Warren	E Sentelle	Pauline Snelson	Melvin Snyder L H Brothers

## HISTORICAL TABLE

YEAR	SESSION	PLACE	DATE	MODERATOR	CLERK	DIR OF MISS	PREACHER
1950	121	Pine Creek Yellow Mountain	Aug 17 Aug 18	J E Brown	P Snelson	Pauline Snelson	H E Marshbanks
1951	122	Sylva First Scotts Creek	Aug 16 Aug 17	J E Brown	E Sentelle	Pauline Snelson	Dr McGee W C Reed
1952	123	Buff Creek Ochre Hill	Aug 14 Aug 15	J E Brown		Pauline Snelson	Ralph Nix
1953	124	Old Savannah East Fork	Aug 13 Aug 14	J E Brown	C Corbin	Dorothy Edwards	L H Crawford J C Pipes
1954	125	Cullowhee Lovedale	Aug 12 Aug 13	J E Brown	C Corbin	Dorothy Edwards	Clyde Collins R W Abrams
1955	126	Lumberton Balsam Grove	Aug 18 Aug 19	J E Brown	C Corbin	Dorothy Edwards	Roland Pruette James Vanderford
1956	127	Hamburg Tuckasegee	Aug 16 Aug 17	J E Brown		Dorothy Edwards	Frank Reed
1957	128	New Hope Black Mountain	Aug 15 Aug 16	Edwin Allison	C Corbin	Dorothy Edwards	Zeb Barker
1958	129	Deitz Memorial Sylva	Aug 14 Aug 15	W Middleton	J Lambert	Alton Hooper	W L Sorrells M A Huggins
1959	130	Scotts Creek Balsam	Aug 13 Aug 14	W Middleton	J Lambert	Alton Hooper	Clarence Vance Doug Branch
1960	131	Rockdale New Savannah	Aug 18 Aug 19	R W Abrams	J Lambert	Alton Hooper	Quentin Perreault Nane Starnes
1961	132	Shoal Creek Hyatts Chapel	Aug 17 Aug 18	R W Abrams	J Lambert	Alton Hooper	J W Costner Ernest Upchurch
1962	133	Buff Creek Hamburg	Aug 16 Aug 17	Ray McCall	J Lambert	Alton Hooper	Alfred Sellers R W Abrams
1963	134	East Sylva Tuckasegee	Aug 15 Aug 16	Ray McCall	J Lambert	Alton Hooper	James Lambert Harry Vance
1964	135	Mt Pleasant Balsam	Aug 13 Aug 14	Ray McCall	J Lambert	Alton Hooper	Clyde Collins Joseph Reece
1965	136	Yellow Mountain Scotts Creek	Aug 12 Aug 13	Alfred Sellers	J Lambert	Alton Hooper	Roy Smith J E Brown
1966	137	Sylva First Calvary	Aug 18 Aug 19	Joseph Reece	Lloyd Fish	Alton Hooper	Lloyd Fish A B Lovell
1967	138	Ochre Hill Rockdale	Aug 17 Aug 18	Joseph Reece	A Hooper	Alton Hooper	Lloyd Fish George Langley
1968	139	No Minutes					
1969	140	Old Savannah Jarrett Memorial	Aug 14 Aug 15	Judson Rotan	C Dean	Walter Middleton	Burrell Lucas Charles Dean
1970	141	Tuckasegee Buff Creek	Aug 13 Aug 14	Judson Rotan	C Dean	Walter Middleton	Charles Bullock Judson Rotan
1971	142	Zion Hill Cullowhee	Aug 12 Aug 13	Robert Blanton	C Dean	Walter Middleton	M Clayton Frank Reed

## HISTORICAL TABLE

YEAR	SESSION	PLACE	DATE	MODERATOR	CLERK	DIR OF MISS	PREACHER
1972	143	Balsam Webster	Aug 17 Aug 18	Robert Blanton	A Hoyle	Walter Middleton	H Anderson Charles Dean
1973	144	Cashiers Lovedale	Aug 16 Aug 17	John Hyatt	A Hoyle	Walter Middleton	Jack Holcombe Ray McCall
1974	145	Locust Field Greens Creek	Aug 14 Aug 15	John Hyatt	A Hoyle	Walter Middleton	L Jackson Harold Anderson
1975	146	Liberty New Hope	Aug 14 Aug 15	Robert Blanton	A Hoyle	Walter Middleton	C H Greene H Nicholson
1976	147	Hamburg Long Branch	Aug 12 Aug 13	Robert Blanton	A Hoyle		Luther Osment J D Wyatt
1977	148	Shoal Creek Black Mountain	Aug 18 Aug 19	Wesley Hooper	A Hoyle	C O Vance Alvin Loiry, Jr	Douglas McFadin Alvin Loiry, Jr
1978	149	Buff Creek Yellow Mountain	Aug 17 Aug 18	J C Robinson	A Hoyle	Alvin Loiry, Jr	Harry Vance Cecil Saunders
1979	150	Balsam Grove Pine Creek	Aug 16 Aug 17	J C Robinson	A Hoyle	Alvin Loiry, Jr	Bill Rogers Robert Blanton
1980	151	East Sylva Sylva First	Aug 14 Aug 15	Ray McCall	A Hoyle	Alvin Loiry, Jr	Jerry Laughter John Bunn
1981	152	Ochre Hill Hyatts Chapel	Aug 13 Aug 14	Ray McCall	A Hoyle	Alvin Loiry, Jr	Pat Correll David Blackney
1982	153	East Fork Jarrett Memorial	Aug 12 Aug 13	Ray McCall	A Hoyle	John Reid	T Connelly George Tuthill
1983	154	Cashiers Cullowhee	Aug 18 Aug 19	Johnny Enloe	A Hoyle	John Reid	Ben Cabe Jack Hinson
1984	155	Tuckasegee Moses Creek	Aug 16 Aug 17	Ed Stillwell	A Hoyle	John Reid	Carl Smith S J Waters
1985	156	Scotts Creek Old Savannah	Aug 15 Aug 16	Ed Stillwell	A Hoyle	John Reid	J D Griffin Virgil Cook
1986	157	Balsam Rockdale	Aug 21 Aug 22	Mike Moore	A Hoyle	John Reid	Abe Brooks Dennis Burrell
1987	158	Zion Hill Lovedale	Oct 15 Oct 16	Mike Moore	A Hoyle	John Reid	Joe Smith Lewis Smith
1988	159	Jarrett Memorial Sylva First	Oct 13 Oct 14	Roy Burnette	A Hoyle	John Reid	Glenn Blanton Ray McCall
1989	160	Cashiers Scotts Creek	Oct 12 Oct 13	Roy Burnette	A Hoyle	John Reid	Charles Sisti Charles Brown
1990	161	Ochre Hill Webster	Oct 18 Oct 29	Clyde Vance	A Hoyle	John Reid	Tommy Lamb Joe Yelton
1991	162	Buff Creek New Hope	Oct 17 Oct 18	Clyde Vance	R Houston	John Reid	Ed Beddingfield Earl Holden
1992	163	Greens Creek Yellow Mountain	Oct 15 Oct 16	James Pressley	R Houston	John Reid	Wayne Sorrells Larry Nations
1993	164	Lovedale East Sylva	Oct 14 Oct 15	James Pressley	R Houston	John Reid	Scott Courtney Barry Almand

## HISTORICAL TABLE

YEAR	SESSION	PLACE	DATE	MODERATOR	CLERK	DIR OF MISS	PREACHER
1994	165	Cullowhee Hamburg	Oct 13 Oct 14	Wayne Sorrells	R Houston	John Reid	Mike Moore Eddie Stillwell
1995	166	Mt Pleasant Black Mountain	Oct 12 Oct 13	Wayne Sorrells	R Houston	John Reid	Roy Burnette Mike Farmer
1996	167	Cullowhee Zion Hill	Oct 17 Oct 18	Dennis Ensley	R Houston	John Reid	Harold Anderson Robert Blanton
1997	168	Locust Field Cashiers	Oct 16 Oct 17	E Beddingfield	W Caldwell	John Reid	Charles Carnes David Boroughs
1998	169	Scotts Creek New Hope	Oct 15 Oct 16	E Beddingfield	W Caldwell		Roger Stewman Keith Ashe
1999	170	Shoal Creek Webster	Oct 14 Oct 15	Tom McClure	W Caldwell		Robert Driggers Tommy Holden
2000	171	Sylva First Ochre Hill	Oct 12 Oct 13	Tom McClure	B Greene	Claude Conard	Rich Peoples Avery Brown
2001	172	Buff Creek East Fork	Oct 18 Oct 19	Mike Dellinger	A Bialy	Claude Conard	Steve Jamison Charles Dean
2002	173	Hamburg Greens Creek	Oct 17 Oct 18	Clemmey Queen	G Morris	Claude Conard	Brian Bishop Steve Gunter
2003	174	New Hope Rockdale	Oct 16 Oct 17	Art Fowler	G. Morris		Art Fowler Matt Ledbetter
2004	175	Hyatts Chapel Mt. Pleasant	Oct 14 Oct 15	Art Fowler	G. Morris		Larry Bryson Mike Moore



## **Jackson County Bible Club**

Bible Club Missions, Inc.

A Non-profit Organization

PO Box 381, Sylva, NC 28779

586-9840 or 293-3372

In 1997 Nora Peters was given a vision by God to teach His Word in all the Jackson County public schools. After gaining approval from the State of NC and the local school superintendent, she started her first Bible Club in one school with only four children. Today this program exists in almost all Jackson County schools with parallel, but independent clubs in Swain, Haywood, Madison, and soon Buncombe & Macon Counties.

The volunteer teachers are from various walks of life. Teachers are men and women from different local churches. More volunteers and helpers are needed.

**Cullowhee Valley Elementary School has not been able to start their Bible Club this year.** We do not have teachers for this school. Please prayerfully consider doing this.

We need financial help as we provide Bibles, snacks, gifts, curriculum, pens, paper, pencils, tape, crayons, etc. Financial support comes from various places: churches, businesses, individuals, and families. JCBC is a non-profit organization and is incorporated as Bible Club Missions, Inc.

Your donation can be sent to Dean Coward, CPA 68C Asheville Hwy. Sylva, NC 28779 or call 586-3002. Tax ID# 56-2275721.

Please contact Steve Alexander 586-9840 or Gracella Morris 586-5784 if you can volunteer or have any questions.

# S.W.A.R.M. ACTIVITY REPORT

2004 SUMMARY: MAY – SEPTEMBER

<b>MINISTRIES</b>	<b>THIS WEEK</b>	<b>BROUGHT FORWARD</b>	<b>TOTAL</b>
Campground Worship			2546
Senior Citizen Center			425
Nursing Homes			1789
Job Corps			270
Santa's Land			2643
Family Evening Programs			3462
Day Camps			1349
Orientation			
Local Church Services			658
Campground Visitation			
Festivals			1762
Campground S.A.C.K.			86
Other			132
<b>TOTAL TOUCHED</b>			<b>15142</b>
<b>SALVATIONS</b>			<b>59</b>



SWARMERS

Bob & Luci Tucker	Erleen Peterson, secretary	Billie Howard, TRBA
Gene & Ruby Buttrey	Tom & Ann Harris	Bobby & Donna Huff
Jr. & Jean Thompson	Roy & Janice Burnette	Damon Walker
Nell & Hart Watson	Elinor Roberts	LouAnn Sholty
Charles & Agnes Taylor	Russ & Joan Thompson	Harry & Martha Thetford
Rebecca Johnson	Marilyn Faircloth	Lowell & Earlene Tison

18 Youth Groups from:  
North Carolina (13), South Carolina (1),  
Alabama (2), Louisiana (1), Florida (1).

372 Youth & Leaders      29 Swarmers      59 Salvations

Served in:  
9 Campgrounds  
5 Nursing Homes  
8 Local Churches  
10 other places of ministry  
2 Work Groups

CAMPGROUNDS SERVED

Yogi	Koa	Ela
Happy Holiday	Bearhunter	Cooper Creek
Flaming Arrow	Fort Wilderness	Adventure Trail

NURSING HOMES

Mountain View	Autumn Wind	Mountain Trace
Skyland	Tsali	

SENIOR CENTERS

Bryson City      Cherokee(Tsali)

OTHER PLACES OF SERVICE

Santa's Land      Job Corps      Local Churches(8)

Truett Baptist Camp  
346 Truett Camp Road  
Hayesville, N. C. 28904  
Annual Report for 2004

**We had such a good Western Happiness Retreat this year there was 92 campers and they sure enjoyed being here. Donnie Wiltshire was the leader and all his helpers did a terrific job.**

**We had two weeks of Girl's camp this year with 240 girls attending.** Breeze Bettis and Crystal Buchanan and Heather Wilson were the leaders and several good counselors made for a very good week. There was 27 girls saved and 13 who made rededications.

There was one week of Jr. Music Week 55 campers attended with Lori Gilbert & Lindsey Cope as leaders. They also had good helpers which made this week very special. There were 7 saved and 25 recommitments to Jesus.

We had one week of Youth Music with 101 attending ; J Gilbert was their director and did a terrific job with all his good helpers. There were 4 saved and 40 redications this week.

We had one week of Boy's Camp Andrew Brown and Marty Gilbert were the directors. There were 120 boys and they seem to have had a good time. Fourteen were saved and 13 rededications were made.

There has been 26 saved during the different church camps and retreats also.

We are deeply grateful for all the churches in Region 10 for your prayers and support. We hope you will put the camp in your church budget or will Support the camp in some capacity.

Worship and Bible study is a very important part of our camp program. Please encourage your children to come to camp and be a part of an exciting experience that will last a lifetime.

Respectfully Submitted

Richard Roberson  
Camp Director

**UNITED CHRISTIAN MINISTRIES OF JACKSON  
COUNTY, INC.**

**191 SKYLAND DRIVE, SYLVA, N. C.  
P.O. BOX 188, SYLVA, N.C. 28779**

**BOARD OF DIRECTORS**

**B. J. Ashbrook, Nancy Buchanan, Audrey Cox, Mary Ginn, Shirley Kool, Pat McMillan, Larry  
Morton, Richard Peoples, Tom Fleach, John Reid, Doug Smith, Dan Stiles, Gloria Stockton, Madge  
Stillwell, Tonya Vickery**

**Kathy C. Cross, Executive Director**

**The year of 2003 was a busy year for United Christian Ministries. Our client  
base was 4572 persons. Almost 34 percent of 4572 were under the age of 17.  
Many of our clients are single parent households with minor children. 69 were  
senior citizens. 352 persons came in as new clients. 918 families needed food;  
and 1850 bags of food were given away.**

**61 families were assisted with medical/dental problems. Rental assistance was  
given to 56 . 147 families were given assistance with past due utilities; 33  
families were assisted with utility deposits. 32 families received assistance for  
heating oil or heating gas. 89 families received diapers; 60 families received  
furniture; 246 got personal/household items.**

**UCM helped 53 transients/homeless persons during the year 2003.**

**218 families received holiday boxes during the months of November and  
December.**

**How did we provide the above services? Churches in Jackson  
County, school clubs, civic clubs, good Samaritans, and the United  
Way gave generously. We ask for your continuous support!**



68 Hospital Road  
Sylva, NC  
28779-2795  
828/586-7000  
Fax 828/586-7467

Dear Friends,

There is always a need for spiritual support and direction for those we serve and the staff who serve them at our facilities. As Chaplain I seek to be a spiritual presence to persons who are facing a crisis with their own health or that of a loved one.

During 2003 my department had an estimated:

- 1,122 Patient visits
- 1,549 Staff and family contacts
- 126 Counselees
- 106 Meetings in the facilities and community
- 36 Emergency calls
- 29 Presentations to Staff and Churches

Our Pastoral Care Department is staffed by one full time Chaplain at Harris Regional and fourteen Chaplain Associates. We have a part time Chaplain at Mountain Trace Nursing Center for the residents, families and staff there. At Swain County Hospital we have eight Chaplain Associate volunteers who generously volunteer their time. I also serve with the WestCare Home Health and Hospice as a Chaplain on call.

I am grateful to our great community and the faithful church congregations who have chosen to support our Chaplaincy program during the year 2003. A part of that support has enabled us to open the new Chapel at the Swain County Hospital with the help of the community and employees. I, along with the WestCare staff and volunteers trust that you will continue to support our efforts. We want to encourage local churches to observe National Pastoral Care Week, October 24 - 29, 2004 and support the Chaplaincy program by:

- including the Chaplain, Chaplain Associates and the on going program in your prayers
- encourage your congregation to call for the Chaplain when in our facilities
- to receiving a special offering and or participate in the "100 Who Care" annual fundraiser

With your faithful support, we are able to continue our ministry of compassion and healing to all who enter our doors. Please remember that 1/3 of the total support for our Chaplaincy program is dependent upon the gifts of our local churches. No gift is too small and none too great. If your church can include the Chaplaincy program in your annual budget this will be a great way for your church to support a local mission that can touch hundreds of persons each year.

Please call whenever we can support the members of your congregations when they are patients or employees of our facilities. I seek to join with you in our common ministry of caring for all God's people. Or if you would like the Chaplain or a member of the Chaplaincy Committee to bring a program to your church or if you just want more information please call the Pastoral Care office at Harris Regional Hospital at 828-586-7145 or email [ron\\_allen@westcare.org](mailto:ron_allen@westcare.org).

In His Service,  
Ron Allen, Director of Pastoral Care and Chaplaincy

**Harris Regional Hospital**  
68 Hospital Road  
Sylva, NC 28779-2795  
828/586-7000  
Fax 828/586-7467

**Swain County Hospital**  
45 Plateau Street  
Bryson City, NC 28713  
828/488-2155  
Fax 828/488-4039

## OFFICE of ANNUITY

After a tumultuous three year period resulting in a dramatic economic downturn which adversely affected retirement accounts of millions of Americans a dramatic rebound occurred during the last year. As a result, the asset base of the Annuity Board gained over 1 billion dollars in one year for the first time since the Annuity Board was established in 1918 to serve ministers and employees of Southern Baptist churches. Concurrently, many participant retirement accounts recouped much of the funds which evaporated during the downturn. The downturn presented a serious challenge to our office in assisting participants with meaningful educational materials and resources to make wise investment decisions.

Secondly, the ongoing national health care crisis continues to present serious challenges to our churches who strive to be responsible employers by providing adequate medical insurance in a rapidly escalating cost environment. To assist in this effort, the Annuity Board responded this year by offering new medical insurance plans. These new plans offer more flexibility with varying levels of deductibles and monthly rates. Along with the new plans, the Board emphasized a three-step approach to address the rising cost of health care. First, the Annuity Board is aggressively managing costs and continuing to create plans that provide more options for participants. Second, participants are encouraged to develop healthy habits related to eating and exercise. And, third, churches need to take the initiative, if at all possible, to provide medical coverage as a benefit for their ministers and staff rather than as a part of the salary package. Those church employees who live within the constraints of an antiquated "pay package" approach have seen a dramatic decline in disposable income if they have tried to maintain adequate medical insurance for themselves and their families.

Thirdly, as a result of actions taken by messengers at the annual meeting of the Southern Baptist Convention in Indianapolis, the Annuity Board gained permission to serve evangelical ministry organizations outside the SBC and to change the official name of the Annuity Board to GuideStone Financial Resources of the Southern Baptist Convention. The name change will become official with an affirmative vote at next year's annual convention in Nashville, Tennessee.

Fourthly, the Endowment ministry of the Annuity Board continued its work to make Southern Baptists aware of the tragic plight of retired ministers and their widows who were unable to plan adequately for retirement. Individuals and churches responded with open hearts and open hands as they helped to underwrite the financial assistance given to those who are in desperate need. More than 3,000 persons in our convention presently receive financial assistance with 335 residing in North Carolina.

As of May 31, 2004, North Carolina participants in the retirement plan moved above 5,200 in 2,332 (61%) of our churches. Our goal is to have all of our churches actively participating in the retirement plan provided by the Annuity Board of the SBC.

In closing, we remain committed to serve all of our churches, ministers, and other church employees. For more information related to products or services, call the Baptist State Convention of NC at 1.800.395.5102 extensions 320 or 321, visit our Web site at [www.bscnc.org](http://www.bscnc.org), call the Annuity Board at 1.800.262.0511, or visit the Annuity Board Web site at [www.absbc.org](http://www.absbc.org).

Johnny E. Ross  
Senior Consultant, Annuity



BAPTIST CHILDREN'S HOMES OF NORTH CAROLINA, INC.

Michael C. Blackwell  
President

Brenda B. Gray  
Executive Vice President  
Dev./Com.

BCH Administration  
P.O. Box 338  
Thomasville, NC 27361  
P. 336.474.1209  
F. 336.472.3802  
[www.bchfamily.org](http://www.bchfamily.org)



## Baptist Children's Homes of North Carolina

(July 2003-July 2004)

***Above and beyond -- these words best describe what North Carolina Baptists did last year!...*** Churches around the state came mightily to the aid of Baptist Children's Homes in 2003-04 as their beloved institution faced one of its most critical financial times. Prayers, money, and gifts of food, towels, sheets, school supplies, and clothes flooded in. These showers of blessings softened the blow of a nearly four million-dollar budget cut. ***Thank you.***

History was made as churches from all 80 Baptist Associations gave food to BCH's first-ever statewide food roundup. Nearly 500,000 pounds of food were collected filling every available space on our campuses. Directors of Missions graciously opened their offices as collection points for the food. Churches delivered food filling their offices, halls and storage rooms. Trucking companies picked up the food from the Association offices and delivered this great expression of your love and concern. ***Thank you.***

(The next Food Roundup is slated for April 2005.)

Last year, nearly 2000 videos of ***Jennifer's Story*** were distributed to churches. The video told how North Carolina Baptists made a difference in the life of Jennifer Shore. Jennifer found hope and healing at Baptist Children's Homes. As an adult she and her husband returned to become child care workers. More than 600 churches invited BCH representatives to share how the lives of children, children like Jennifer, are being changed every day. United together, North Carolina Baptists not only met the 2003 Thanksgiving Offering goal, but exceeded it! ***Thank you.***

Baptist Children's Homes is at the center of North Carolina Baptists' hearts. Their actions prove it! Jesus challenged us all when he said, "In the same way, let your light shine before men, that they may see your good deeds and praise your Father in heaven." Our children and staff, the people in your communities, and the citizens of North Carolina saw Jesus in action and our Heavenly Father was glorified! ***Thank you.***

***Blackwell marks 20th year as president...*** On July 1, 1983, Michael C. Blackwell became president of BCH. Trustees honored his twenty years of ministry during their September 2003 board meeting with "A Celebration of Ministry."

***BCH begins strategic planning process...*** BCH president Michael C. Blackwell initiated an agency year-long strategic planning effort. Blackwell says this is the most comprehensive effort since he became president. All areas of the agency are involved in



the development of the plan. Recommendations will be presented to the Trustees at their September meeting. The plan will debut in January 2005.

***Shine your light!***...Inspired by North Carolina Baptists, this year's Thanksgiving Offering theme is "Shine your light." Although blessings flowed freely in 2003 helping to avert more difficult hardships, our need remains great. Children and families continue to pour out their hurt on our doorsteps. Alone and suffering, children need to know that in their journey of darkness there is a light shining, guiding them to a better day. You help keep the light on and shining bright as we, day-to-day, offer help in Jesus' name. Our statewide Thanksgiving Offering goal this year is \$1,300,000. This represents a \$75,000 increase over last year's offering goal. An increase demanded by necessity. Challenge your church to participate in the 2004 Thanksgiving Offering. ***Our success depends on you.***

***BCH...Focused on the Future.*** Despite the trying times, Baptist Children's Homes continues to be committed to providing only the highest quality of service. Children who come through BCH's doors continue to receive an abundance of love, care and healing. A dedicated staff serves and gives of themselves sacrificially. The lives of children and families are worth every effort. BCH holds true to its mission of ***"helping hurting children... healing broken families."***

The support of North Carolina Baptists through the Thanksgiving Offering, Cooperative Missions giving, church and individual gifts, memorials, honors, and estate gifts enables BCH to provide care for more than 2000 children through our locations across the state. ***Thank you, North Carolina Baptists, for your continued prayers and support. We could not do what we do without you.***

**Michael C. Blackwell, President**  
**Abe Elmore, Board of Trustees Chair**  
Fall 2004

**THE NORTH CAROLINA BAPTIST FOUNDATION, INC.  
2003 ANNUAL REPORT**

The mission of the North Carolina Baptist Foundation since its inception in 1920 has been to assist the Convention and its institutions and agencies in increasing an awareness among North Carolina Baptists of Christian estate stewardship principles as a means of financially undergirding churches, institutions and mission endeavors on a permanent basis. The uniqueness of the ministries and services provided by the institutions and General Board staff merits increased financial support. The Foundation accomplishes these objectives by offering assistance in estate planning counsel, Will preparation, planned giving, charitable remainder trusts, endowment funds and church fund management.

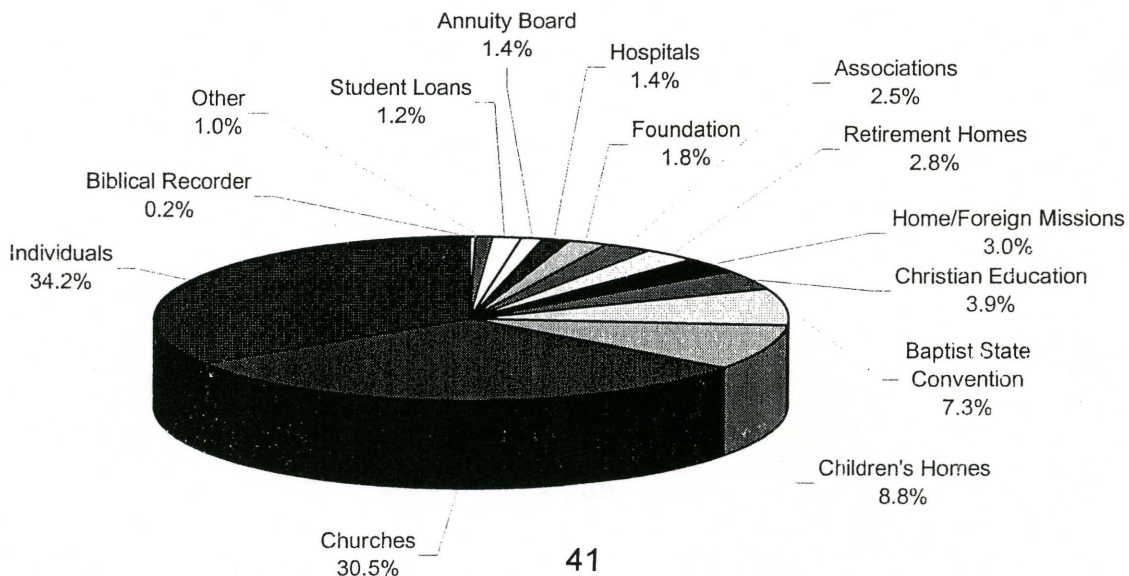
During 2003, the Foundation assisted individuals in establishing 23 endowment funds and 8 charitable remainder trusts totaling \$633,000 and received \$2.7 million in contributions to existing endowments all of which will ultimately benefit countless Baptist causes on a permanent basis. Programs were provided for churches and associations during the year to promote Make Your Will Month, Christian estate stewardship, and church fund management. Over \$2.0 million from churches and institutions came under management to enhance numerous ministries including scholarships, building funds, cemetery funds, benevolence funds, general operating funds and other various mission causes. Overall, the Foundation received \$5.3 million in contributions during 2003 for Christian causes.

The Foundation employs professional money managers to invest these funds according to an investment policy adopted by its Board. Four investment pools are offered: a growth fund, a balanced fund, an income fund and a fixed income fund. The Foundation uses the services of Salomon Smith Barney to help select top money managers and evaluate performance. As of December 31, 2003, the Foundation held \$112.9 million under management.

During 2003, our distributions totaled \$5.7 million, with charity receiving \$3.8 million and individuals, through trusts, receiving \$1.9 million. During the 83-year history of The North Carolina Baptist Foundation, Inc., \$25 million has been distributed to individuals and \$44.1 million to Baptist churches, institutions and mission causes for a grand historical total of \$69.1 million.

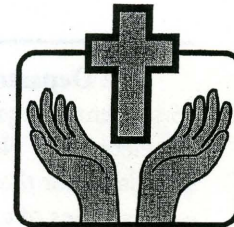
Harold G. Koger, Chair, Board of Directors  
M. Clay Warf, Executive Director

**2003 Distributions**





# 2004 Report to the Associations North Carolina Baptist Hospital



"Touching Lives With Hope"

## BAPTIST HOSPITAL AND NORTH CAROLINA BAPTISTS:

### *PARTNERS IN MINISTRY*

The mission of North Carolina Baptist Hospital, "to provide and advance excellent healthcare, embracing the healing presence of God," reflects our distinctive heritage of extending the healing ministry of Jesus Christ. Since 1923 we have been privileged and grateful to be partners in mission with North Carolina Baptists, touching the lives of hurting people with great hope and strengthening the ministries of churches.

### THE MOTHER'S DAY OFFERING:

#### *PARTNERS IN BENEVOLENT CARE*

##### *Real Needs... Real Hope... In the Name of Christ and His Love*

Thank you, North Carolina Baptists, for giving compassionate witness to the love of Christ through the Mother's Day Offering! Every dollar of every gift (\$584,958 in 2003) relieves the anxious burden of hospital bills for our patients in serious financial need. Having no where else to turn for help, they find Christ reaching to them through you.

A recent recipient, suffering from life-threatening illness and worried sick about the burden of her hospital bill, received a letter that changed her life. The words of grace resounded, "Your hospital bill has been paid by compassionate and mission-minded North Carolina Baptists in the name of Jesus Christ and His love."

With deep thankfulness she replied, "I greatly appreciate the love of God that North Carolina Baptists have shared with me. This gift in the name of Jesus Christ has lifted a heavy burden, and I could never say thank you enough. God bless those who give for their compassion."

The needs of many patients far exceed the resources available to help them. Please give generously so more can be helped in the name of Christ's love.

### THE SCHOOL OF PASTORAL CARE:

#### *PARTNERS IN MINISTRIES OF GROWTH, HOPE, AND HEALING*

North Carolina Baptists, by *Cooperative Missions Giving*, provide healing ministry to thousands of hurting people, strengthen the effectiveness of hundreds of churches, and equip scores of ministers for service through the School of Pastoral Care.

**Baptist Hospital's CareNet Counseling Centers** provide a statewide, faith-based counseling network that extends the ministry of churches. Pastors are the largest single referral source, and members of Baptist churches are the largest group being served. Through 22 locations we will provide nearly 23,000 hours of pastoral counseling in 2004. Thanks to *Cooperative Missions Giving*, counseling that shares Christ's compassion and hope is made affordable and subsidized for those who need assistance.

**The Center for Congregational Health**, with the support of North Carolina Baptists, provides three vital ministries that enhance the effectiveness of churches. The Center is strengthening 25 churches per month through **consultation services**, assisting churches with strategic planning, team development, and conflict resolution. **Leadership development** programs are training 20 ministers per month, strengthening these clergy for more effective service. The Center has trained nearly 1,400 pastors as **interim ministers** and intentional interim specialists.

---

The Department of Chaplaincy and Pastoral Education provides training in pastoral ministry to nearly 55 students per year, and extends compassionate spiritual care to patients and families through 60,000 ministry contacts. Our North Carolina Baptist partners, through Cooperative Missions Giving, allow tuition to be affordable for these ministers. Our churches reap the benefits, as pastors learn to provide high quality pastoral care in times of crises, deepen their own faith, and enhance their evangelism.

#### **ADDITIONAL HIGHLIGHTS AT NORTH CAROLINA BAPTIST HOSPITAL**

##### *Caring for Ministers and Their Families*

- N.C. Baptist ministers and their families receive a *subsidy of up to 25%* on their hospital bills at Baptist Hospital, a helping hand that brings tremendous relief and gratitude. It is made possible by the Hospital's W.K. McGee Patient Service Fund, with support from the Mother's Day Offering as needed. An average of \$60,369 per year has been provided during the last five years.
- Our CareNet Counseling Centers, in partnership with the Baptist State Convention, provide the *Ministers' Care Plan* to full-time, ordained ministers serving N.C. Baptist churches, and their immediate families. Confidential pastoral counseling is made available for \$20 per session at a CareNet center, with the BSC and CareNet covering the remainder of the cost. Please call Rev. Paul Mullen, Director of Church and Community Relations, for more information (336-716-3027).

##### *National Rankings Reflect Commitment to Excellence*

- We are consistently rated among the nation's top 50 hospitals by *U.S. News and World Report*.
- We are *one of America's top 15 major teaching hospitals*, according to the Solucient Top 100 Hospitals. This listing is one of the nation's most comprehensive ratings of hospitals.
- We are *one of America's Top Cardiac Centers for Women* (*Good Housekeeping, 2004*).
- We have been ranked as *one of America's top cancer centers* since 1996 by *U.S. News and World Report*. Our *Outpatient Comprehensive Cancer Center*, one of the nation's most advanced treatment centers, opened in the summer 2004.
- We are in the *top one percent in patient satisfaction* among our peers in the United States, according to Press Ganey, one of the healthcare industry's leading patient satisfaction measurement firms.

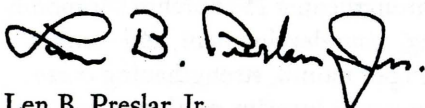
##### *Information and Appointments*

To make an appointment for yourself or a family member with a physician, or to receive information on health related issues, please contact HEALTH-ON-CALL at 800-446-2255 or 336-716-2255.

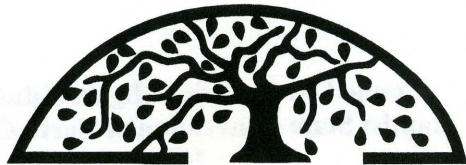
#### **CLOSING WORDS FROM THE PRESIDENT**

The compassionate, healing ministry of Christ continues to be realized in remarkable ways at North Carolina Baptist Hospital. We are profoundly thankful for the privilege of serving Christ by serving others through these ministries of growth, hope, and healing. We are deeply grateful to North Carolina Baptists for being our partners in ministry, and pray that God's love will continue to shine rays of healing hope through our common mission.

Respectfully submitted,



Len B. Preslar, Jr.  
President  
North Carolina Baptist Hospital



**BAPTIST RETIREMENT HOMES**  
**OF NORTH CAROLINA, INCORPORATED**  
**PROUDLY SERVING OLDER ADULTS SINCE 1951**



*"Lord...you have made my lot secure. The boundary lines have fallen for me  
in pleasant places; surely I have a delightful inheritance." –Psalm 16:5-6*

Because of your generosity, Psalm 16 is a fitting scripture for the over 700 Older Adults who reside at the Baptist Retirement Homes of North Carolina, Incorporated...

**Their lot has been made secure—**

All of your gifts through the Cooperative Giving Plans of the Baptist State Convention, through the February North Carolina Offering for Older Adults, and through direct gifts from the churches are designated to provide care for those who otherwise could not receive care. Many of our Assisted Living care residents and the majority of our Nursing Care residents receive financial assistance from you. Furthermore our promise to each of our residents is care that will last for as long as they live.

**Their boundary lines have fallen in pleasant places—**

At the Western North Carolina Baptist Home in Asheville ... at Brookridge Retirement Community in Winston-Salem ... at The Taylor House in Albemarle ... and at Hamilton Baptist Home in northeastern North Carolina, beauty, security, and comfort are found in full measure.

**They have a delightful inheritance—**

At each of the Homes, the ministry of a Baptist Chaplain lifts the hearts of our residents. The enrichment and recreational opportunities at each Home make for an enjoyable lifestyle. Day after day the high quality of care that is given speaks of the care of a loving Heavenly Father, helping to make life for our Aging Saints...The Best of Times!

**Council on Christian Higher Education  
Baptist State Convention of North Carolina  
2004**

**GREAT WORKS STAND THE TEST OF TIME**

The classics. They are the books that are required reading in classrooms around the world. They are the masterpieces that hang in Louvre and other great museums. They are the compositions from Beethoven, Bach, Mozart, Strauss and countless others that are taught and studied and appreciated generation after generation.

What makes them classics? What makes them stand the test of time? Put simply, these works were developed by people who took painstaking care with their craft. Attention was paid to every individual detail as if the very life of the work itself depended on it. Love and devotion and skill were combined with each vision to produce an explosion of creativity and unique expression.

If these explanations truly define the classics and the great works, then the Baptist colleges of North Carolina belong in that very category. Five institutions that define the spirit and commitment of North Carolina Baptists draw their very essence from the North Carolina Baptist State Convention, an institution that was created in part to fulfill the mission of Christian higher education in this state.

Begun in 1830, the Baptist State Convention of North Carolina has stood the test of time. Using the same qualities as the great composers, artists and authors from throughout the centuries, the Baptist State Convention has poured love and devotion and care into the pursuit of offering only the finest in college education.

Campbell University, Chowan College, Gardner-Webb University, Mars Hill College and Wingate University are the five institutions affiliated with the convention. Why is that important? Because heritage and history make for strong foundations. With the support received from the convention through scholarships, resources, prayer, encouragement and leadership, these institutions grow stronger each year in reputation, prestige, character, quality and respect.

Gifts to the Cooperative Missions Budget of the Baptist State Convention of NC last year made it possible for 499 members from 316 convention related churches to attend our five affiliated institutions of higher education. Some of the recipients would not have been able to pursue their dream of a degree from an accredited college or university without the financial assistance provided by generous Baptists like you.

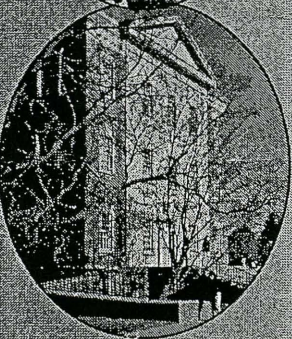
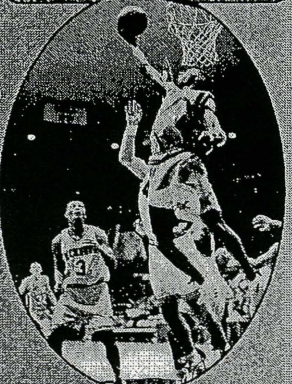
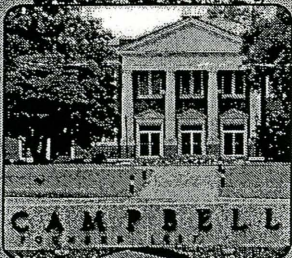
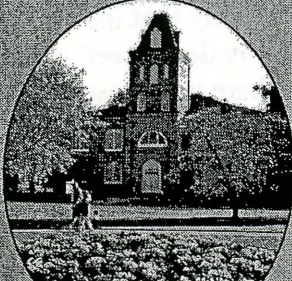
**Clella A. Lee, President**  
**John Roberson, Executive Director**  
**Council on Christian Higher Education, PO Box 1107, Cary, NC 27512-1107**  
**1-800-395-5102 ext. 119 - [jroberson@bscnc.org](mailto:jroberson@bscnc.org)**



James H. Royston, Executive Director-Treasurer

205 Convention Drive • Cary, NC 27511 • (919) 467-5100 • (800) 395-5102 (NC only) • [www.bscnc.org](http://www.bscnc.org) © 2004 Baptist State Convention of NC  
*The missions and ministries of the Baptist State Convention of North Carolina are made possible by your gifts through Cooperative Giving and the North Carolina Missions Offering.*

**THE EDUCATION YOU WANT  
THE EDUCATION YOU NEED  
THE EDUCATION FOR *Your* LIFE**



- Strong academic curriculum with faculty who are committed to your success.
- 100 undergraduate tracks & concentrations plus highly regarded graduate schools of law, pharmacy, business, divinity and education.
- 1-to-12 faculty-to-student ratio.
- NCAA Division 1 Athletics.
- Beautiful 850 acre campus with well-equipped laboratories and facilities.
- Learning environment that broadens your perspective---and focuses your skill for the job market.
- Participate in over 50 student clubs and organizations.

- Thank you churches for your support of Christian Higher Education through the Cooperative program.
- Thank you North Carolina Baptist Churches for your support of Baptist colleges and universities in North Carolina through budget plans A, B, C, and D.
- Celebrating 117 years of providing quality Christian Higher Education.
- Providing World Class Opportunities.
- The benefits of a major university, the advantages of an intimate college setting.
- Over 4,000 students on main campus representing all 50 states and more than 56 countries around the world.
- Providing students with an "Education for Life."

**CAMPBELL**  
UNIVERSITY

[www.campbell.edu](http://www.campbell.edu)

(910) 893-1200

**ANNUAL REPORT**  
**Fruitland Baptist Bible Institute**  
**July, 2003 – June, 2004**

Our mission at Fruitland is to provide quality training for Christian ministry that balances academic, devotional, and practical emphases. Academically, we aim to lay a foundation for any further study that the student may undertake. Our graduates have demonstrated the academic quality of our program by doing well in a number of schools across the country to which they have transferred. The devotional atmosphere which we seek to maintain in our classrooms and on our campus challenges students to grow spiritually. Worship in chapel is a daily part of our campus life. The fact that most of our faculty members are involved in some regular ministry enhances our practical emphasis and helps prepare our graduates to enter various positions of Christian ministry.

Our student body is diverse in ages and backgrounds. Several international students have been enrolled. Several of our students are involved in regular ministries during their studies. Student family housing and dormitory housing provide for resident students and we have many commuting students. Our cumulative, non-duplicated enrollment for the past year was 257. In consultation with Hispanic church leaders and Larry Phillips of the State Convention staff, we began classes in Spanish in the Spring of 2004.

On September 9, 2003, administration, faculty, staff, students, and alumni joined in the celebration of the fiftieth anniversary of Dr. John Rymer as a faculty member. Although Dr. Rymer has taught several different subjects during the years, he continues to teach Old Testament which he has taught during his entire tenure. Joe Stoneham is the newest faculty member. He teaches Computer Science. He is a native of Dallas, Texas, where his parents were married by Dr. George W. Truett, noted pastor of the First Baptist Church. He is a graduate of Old Dominion University, Norfolk, Virginia, with a B. S. degree in Electrical Engineering Technology. He is married to Judy Bates Stoneham who is a staff member at Blue Ridge Community College. They are active in the First Baptist Church of Hendersonville, NC. In the Fall Quarter of 2003 we had Dr. D. L. Lowrie of Lubbock, Texas, as visiting professor of Old Testament and Pastoral Ministries. Dr. Lowrie is scheduled to return for the Fall Quarter of 2004.

A number of special events are held on our campus annually. In October we observed Alumni Day and Preaching Week. Visiting speakers were Joe Brown of Charlotte, NC, and D. L. Lowrie of Lubbock, Texas. On Founders' Days in May our guest speakers were Dr. Gray Allison of Memphis, Tennessee and Dr. Elmer Towns of Lynchburg, Virginia. Alice Lowrie was the guest leader for the Women's Retreat held in October. Sunday School Seminars were conducted by the staff of the Baptist State Convention in November.

Preliminary plans have been made to renovate the Crouch Building which houses our chapel and eight classrooms. This would include the enlargement of the chapel to provide better for graduations and special events and the equipping of the classrooms for the use of the latest technology in multi-media presentations.

Fruitland continues to adapt to changing needs and opportunities while endeavoring always to remain "true to God's Word and loyal to His purpose." We are grateful for the continuing support of the Baptist State Convention in providing for us the opportunity to participate as partners moving toward the fulfillment of the Great Commission. Our alumni continue to assist us in the fulfillment of our mission by praying, recommending the school to prospective students, and giving. Visiting groups and individuals are welcome to visit our beautiful campus. Our offices are open except for holidays. For a tour of the campus contact Todd Edmiston, our Campus Services Director by telephone at 828-685-8886 or by E-mail at [fruitland@mchsi.com](mailto:fruitland@mchsi.com).

# ARTICLES OF INCORPORATION

## NONPROFIT CORPORATION

OF

### TUCKASEIGEE BAPTIST ASSOCIATION, INC.

I, the undersigned person of the age of eighteen years or more, acting as incorporator for the purpose of creating a nonprofit corporation under the laws of the State of North Carolina, as contained in Chapter 55A of the General Statutes of North Carolina, entitled "Nonprofit Corporation Act", and the several amendments thereto, do hereby set forth:

1. The name of the corporation is:  
**Tuckaseigee Baptist Association, Inc.**

2. The period of duration of the corporation shall be: perpetual.

3. The purpose for which the corporation is organized is to engage in any lawful act or activity for which corporations may be organized under Chapter 55A of the General Statutes of North Carolina.

4. The Corporation shall have members as provided by the by-laws.

5. The street address and county of the initial registered office of the corporation is:

Lovedale Road, State Road No. 1790, P. O. Box 266, Sylva, Jackson County, North Carolina, 28779.

6. The name of the initial registered agent of the corporation at the address above is:

John Reid.

7. The number of directors constituting the initial board of directors shall be three, and the names and addresses of the persons who are to serve as directors until the first meeting of the corporation or until their successors are elected and qualified are:

Dennis Ensley

170 Fisher Circle  
Sylva, NC 28779

Howard Buchanan

Rt. 2, Box 166  
East Fork Road  
Sylva, NC 28779

Lee Ensley

Rt. 3, Box 414  
Sylva-Cullowhee Road  
Sylva, NC 28779

8. The name and address of the incorporator is:

J. K. Coward, Jr.

43 W. Main Street  
Sylva, NC 28779

9. Any other provisions which the corporation elects to include are attached.

IN TESTIMONY WHEREOF, I have hereunto set my hand, this the 20<sup>th</sup> day of May, 1994.

J. K. Coward, Jr., Incorporator  
J. K. Coward, Jr., Incorporator

NORTH CAROLINA  
JACKSON COUNTY

I, Jennie S. Miller, a Notary Public, do hereby certify that J. K. COWARD, JR., personally appeared and acknowledged the execution of the foregoing Articles of Incorporation.

IN TESTIMONY WHEREOF, I have hereunto set my hand and official seal, this the 20<sup>th</sup> day of May, 1994.

Jennie S. Miller  
NOTARY PUBLIC

My Commission Expires:

9-9-97

f/JENNIE/93J393.COR



**BY-LAWS OF THE TUCKASEIGEE BAPTIST ASSOCIATION, INC.**

**ARTICLE I. NAME**

The name of the body shall be the Tuckaseigee Baptist Association, Incorporated.

**ARTICLE II. OBJECTIVES**

The purpose of the Association is to be a fellowship of churches on mission in our setting. The specific objectives of the Association are as follows:

1. To promote harmony, understanding and spiritual power between the churches.
2. To afford and promote a larger fellowship of Christians in the work of Christ.
3. To provide such programs, projects and organizations as will strengthen the churches and assist them in achieving their goals and objectives.
4. To discover needs which cannot be met effectively by churches individually and to coordinate the use of resources in meeting these needs.
5. To encourage support by every church for the mission causes of the Association, the North Carolina Baptist Convention, and the Southern Baptist Convention.

**ARTICLE III. AUTHORITY**

SECTION 1. The Association shall have the power to elect and install its officers in whatever manner the body may deem expedient.

SECTION 2. The Association shall have power to recommend measures of usefulness and guidance to our churches in matters of organization, ordinations and questions of doctrines and discipline,

SECTION 3. The Association shall have no power to infringe upon the right of local churches as sovereign and independent bodies.

**ARTICLE IV. MEMBERSHIP**

SECTION 1. The Association shall be composed of regularly constituted Baptist churches in cooperating fellowship with the Southern Baptist Convention and following the teachings of the New Testament.

SECTION 2. The Association shall be the sole judge of its membership and may receive or reject churches applying for membership therein at its pleasure. Churches applying for membership shall agree to come under the watchcare of the Association for one year. It is understood that during this period of watchcare the church shall be entitled to all rights and privileges of the Association except those of voting.

Applications for membership shall be presented to the Credentials Committee of the Association. The applications will consist of a letter from a constituted church stating their desire to affiliate with the Tuckaseigee Baptist Association. The Credentials Committee as a part of the review process may invite the requesting church to a conference to discuss its history, its mission strategy, and any other information that may be pertinent to the application. The Credentials Committee may then approve the application and recommend them to the Executive Committee. The Executive Committee may by a simple majority vote accept the requesting church to come under the watchcare of the Association for one year. It is suggested that any church under watchcare participate in the missions program of the Association. At the end of the year, the church may be voted in as a member of the Association with full privileges by a two-thirds vote of the messengers present and voting at the annual meeting of the Association, provided that the church submits an acceptable letter and at least one messenger be present at the meeting.

SECTION 3. Any church may withdraw from the Association at its pleasure and should notify the Association of this action in writing. Such action will be recognized by the Association at the next annual meeting.

SECTION 4. It shall be the duty of each church to furnish the Associational Clerk, before each annual session, an annual letter, the forms provided by the Associational Clerk, giving the information requested as is applicable to each church situation.

SECTION 5. The Association may withdraw from any church which has become unscriptural in its doctrine or practices by a two-thirds majority vote of the messengers present and voting at the annual meeting. Such vote is to be taken by written ballot.

**ARTICLE V. MEETINGS**

SECTION 1. The Association shall hold its annual meeting on Thursday and Friday preceding the third Sunday in October. Special meetings of the Association may be called by the Executive Committee provided two weeks written notice is given to the member churches.

SECTION 2. Each church shall be entitled to be represented at the annual meeting by the pastor and one additional messenger. Churches which give to the association more than .5% of their undesignated receipts shall be entitled to an

additional 2 messengers for every .5% of giving up to a total of 10 messengers for churches which give 2% of their undesignated giving."

SECTION 3. Churches are requested to elect their messengers and alternatives in conference to attend the annual meeting.

SECTION 4. In case of internal dissension in a church and two parties coming to the Association, each claiming to represent the church, neither party shall be seated until the question is decided as to which party is in union with the Association. The decision is to be made by a majority of the messengers present and voting.

#### ARTICLE VI. OFFICERS

SECTION 1. General officers of the Association shall be: Moderator, Vice Moderator, Clerk, Assistant Clerk, Treasurer, Assistant Treasurer, Historian, Parliamentarian, and Assistant Parliamentarian. Program leaders shall be Sunday School Director, Church Training Director, Music Director, Chairman of Evangelism Committee, Seminary Extension Director, Chairman of Mission Committee, Director of Missions, Trustees, Pastor Conference President, Youth Director, Stewardship Director, Vacation Bible School Director, Woman's Missionary Union Director, Brotherhood Director, Deacons Chairmen, Senior Adult Director, Singles Ministry Director, and such other officers as the Association may desire to elect.

Associational representatives will be elected for the following institutions and agencies: (1) Truett Camp, (2) Baptist Children's Homes, (3) Baptist Hospital, (4) North Carolina Baptist Homes, Inc. (Homes for the Aging), (5) Biblical Recorder, (6) Christian Education, (7) Annuity Board and other representatives as may be deemed appropriate and elected in the Association.

SECTION 2. With the exception of the Director of Missions and Trustees, the terms of office for all officers of the Association shall be for one year with the privilege of continuing re-election. The Moderator and Vice Moderator shall not be eligible for re-election but one year in succession. (1) The number of Trustees shall be three. (2) The term of service should be for three years, with the term of only one expiring each year. In the first election of Trustees, the term of service for one should be three years, another two years, and the other one year. (3) Upon the expiration of term of service, the Trustee may or may not be re-elected for another term of three years.

Each term of office shall begin with the close of the annual session. The Associational financial year will run from January 1 through December 31.

#### ARTICLE VII. DUTIES OF OFFICERS

SECTION 1. The **Moderator** shall preside and maintain the order of all meetings of the Association and Executive Committee. He shall serve as ex officio member of all committees of the Association.

He shall appoint the Committee on Committees and all other committees pertinent to the operation of the body not named by the Committee on Committees in its regular report.

SECTION 2. The **Vice Moderator** shall assist the Moderator and preside in the absence of, or at the pleasure of the Moderator.

SECTION 3. The **Clerk** shall keep a complete and accurate record of all transactions; shall prepare a "Book of Reports" to be distributed to messengers at the beginning of each day's session of the annual meeting; and shall cause to be printed minutes concerning the records made.

The Clerk shall distribute to the clerk of each church in the Association blanks for the preparation of the church letter as soon as they are received from the State Convention. This form is to be returned to the Clerk of the Association not later than four weeks prior to the meeting of the body or by the deadline set by the Clerk and Director of Missions. All program reports should be returned by the same date.

An **Assistant Clerk** shall work with the Clerk in preparing the "Book of Reports," the annual minutes and the registration of messengers at the annual meeting.

SECTION 4. The **Treasurer** shall receive and dispense by order of the Executive Committee of the Association while in session, the money of the treasury and make a complete report at the Annual meeting and a current report at each Executive Committee meeting.

An **Assistant Treasurer** shall be elected to assist the Treasurer by request and to serve in the event the Treasurer resigns or is ill or unable to function.

SECTION 5. The **Historian** shall keep the records of the Association up-to-date.

SECTION 6. The **Parliamentarian** shall upon the request of the presiding officer of the body, advise and assist the Association with respect to all matters involving Parliamentary Procedure.

An **Assistant Parliamentarian** shall be elected. The Parliamentarian and Assistant should always communicate with each other to ensure that this office is filled at each Associational Annual or Executive Committee meeting.

SECTION 7. The **Program Leaders** and the **Institutional Agency Representatives** shall perform all duties customary to their titles and shall make a written report to the annual session of the Association.

SECTION 8. **Trustees** have no authority except by direction of the Association and are not personally bound by

signatures but are to be the legal signees for the Association. Trustees represent the Association in legal matters. Trustees act on behalf of the Association in acquisition and disposal of Associational property.

They sign all deeds of conveyance, execute all notes, bonds or mortgages, intervene in all suits, by authority of the Association.

All persons dealing with the Trustees, as Associational officers, may rely upon any written resolution duly adopted by the Association or Executive Committee, directing and authorizing the Trustees to act in its behalf and certified by the Association Moderator and Clerk.

#### ARTICLE VIII. RULES OF ORDER

The business of the Association shall be conducted according to Robert's Parliamentary Practice or in a manner not contrary thereto.

#### ARTICLE IX. QUORUM

The quorum for the Annual Associational meeting or any special called meeting of the Association shall not be less than 25 percent of the member churches.

#### ARTICLE X. THE EXECUTIVE COMMITTEE

SECTION 1. The Executive Committee shall be composed of the General Officers and Program Leaders elected by the Association and the Pastor and one member from each church in the Association. No Pastor, by virtue of his being an Associational Officer or Program Leader shall be disqualified as a member of the Executive Committee, from representing the church or churches he may be serving in the Association. Twelve of these members shall constitute a quorum.

SECTION 2. It shall be the duty of the Executive Committee to act for the Association on matters arising when the Association is not in session and to make a report of all work to the next session of the Association. This body shall meet at a time and place designated by the Moderator on Monday following the first Sunday of each quarter except for the July quarter which shall meet on the second Monday of the month of July. Special meetings of the Executive Committee may be called by the Moderator with a one week notice to the churches.

SECTION 3. All vacancies occurring on committees or among elected officers shall be filled by the Executive Committee.

SECTION 4. In the event that a vacancy occurs with the Trustees, the Executive Committee should fill such vacancy for the remainder of the term.

#### ARTICLE XI. ASSOCIATIONAL STANDING COMMITTEES

SECTION 1. The Association shall have such standing committees as may be deemed necessary to promote efficiently the work of the Master in our midst. The terms of office for all committee members shall be for one year except where specifically stated otherwise.

SECTION 2. COMMITTEE ON COMMITTEES. It shall be the duty of this committee to nominate at the general meeting all standing committees as set forth under Article XI.

SECTION 3. THE NOMINATING COMMITTEE shall be composed of seven members. To this group the Directors of Sunday School, Discipleship Training, Woman's Missionary Union, Brotherhood and Music Ministry will be added.

It shall be the duty of this committee to nominate the Officers, Program Leaders and Institutional Agency Representatives. These nominees shall be notified in writing not less than one month prior to presenting of their names at annual session.

SECTION 4. THE ORDER OF BUSINESS COMMITTEE, composed of three members, shall plan the annual program of the Association and present it to the Executive Committee at its October meeting.

SECTION 5. THE CREDENTIALS COMMITTEE shall be composed of three pastors and two laymen. It shall examine applications of churches seeking admission into the Association in keeping with Article IV and make recommendation to the Association. It shall counsel with churches that are out of harmony of fellowship with the Association. It shall be responsible for registering messengers at the Annual Meetings."

SECTION 6. THE PLACE AND PREACHER COMMITTEE shall be composed of three members. The duties of this committee shall be to recommend the place or places for the following annual meeting and to recommend the preacher and alternate to deliver the annual sermon for the following year.

SECTION 7. THE RESOLUTIONS COMMITTEE shall be composed of three members. It is appointed by the Moderator at the October Executive Committee meeting. It shall be the duty of this committee to present suitable resolutions at the annual Associational meeting.

SECTION 8. THE MEMORIAL COMMITTEE shall be composed of three members. It shall be the duty of this committee to bring a report to the annual meeting of those listed by the member churches as deceased since the last annual meeting and shall lead a memorial service in their memory.

SECTION 9. THE STEWARDSHIP COMMITTEE shall be composed of six members including the Treasurer of the Association. This committee shall: (a) present a Budget to the Association for the following year; (b) devise plans for raising

the funds for the Associational Budget; (c) audit the finances and financial records of the Association annually and anytime there is a change of Treasurer or at the direction of the Association or the Executive Committee; (d) report all audits to the Annual Association Meeting.

SECTION 10. THE CONSTITUTION COMMITTEE shall be composed of three members and shall perform all duties specified in Article XV.

SECTION 11. THE ORDINATION COMMITTEE shall be composed of five designated Pastors and all other Pastors who desire to sit with the committee.

A. The committee serves on an advisory capacity only and serves at the request of the church from which the member is seeking ordination.

B. The committee should examine such candidates for the ministry as come before it as to their call and fitness for the gospel ministry and make such recommendations to the church as they feel led.

C. The committee should assist in arranging the proper service of ordination when such assistance is requested.

D. The Executive Committee should be informed regularly of the work of the committee.

E. Each church desiring to ordain a candidate is urged to consult with the committee, and shall give two weeks notice in which the committee is to do its work.

SECTION 12. THE EVANGELISM COMMITTEE. The duties of the committee shall be to direct and propose a perpetual program and spirit of evangelism in the Association. It shall arrange and direct all Associational-wide evangelistic activities.

SECTION 13. THE ASSOCIATIONAL MISSIONS DEVELOPMENT COUNCIL shall be composed of eight (8) members, nominated by the Associational Committee on Committees and elected by the Association at the annual meeting. The committee shall be: Missions Development Director, Promotion Director, Survey Director, Associational WMU Mission Action Director, Associational Brotherhood Director, Sunday School Outreach Director, Church Training Director, and Associational Deacons President. The Missions Development Director, Promotion Director, and Survey Director shall be elected for a three-year term, with one member named each year. The other five positions shall be filled by the person who is elected to fill those five Associational offices.

The duties of the AMDC are to lead the associational missions development in the five mission performance tasks: (1) call churches to be on missions; (2) train, develop, and encourage church and Associational workers; (3) provide resources and services to churches and leaders; (4) provide opportunities for working together in missions, ministry and growth; (5) establish and maintain appropriate communications and relationships with the community and the denomination.

SECTION 14. THE BUILDING AND GROUNDS COMMITTEE shall be comprised of three members. The committee shall be responsible for and in charge of the upkeep and repairs of the Associational building, grounds, and equipment.

SECTION 15. THE PERSONNEL COMMITTEE

A. The Committee shall be composed of 7 members of which 3 are pastors.

B. They shall recommend policies and procedures for the selection, supervision and termination of Associational staff personnel. Those policies and procedures shall be approved by the Association.

C. Prepare and maintain an organizational manual relation to the Association's staff personnel.

D. Develop and recommend to the association policies and procedures for paid and volunteer staff personnel.

E. Develop policies and procedures regarding continuing education and development for the Director of Missions and other Associational staff.

F. When a staff vacancy occurs, other than the DOM, they shall serve as the search committee. When a DOM vacancy occurs, they shall nominate a search committee and present it to the Executive Committee.

G. The Personnel Committee shall handle grievances as outlined in the grievance policy.

## ARTICLE XII. THE ASSOCIATIONAL COUNCIL

The ASSOCIATIONAL COUNCIL shall be composed of the Director of Missions, the Moderator, the Vice Moderator, the Program Leaders: Sunday School, Discipleship Director, Woman's Missionary Union, Brotherhood Director, Chairman of Deacons, Missions Development Director, Chairman of Evangelism, Chairman of the Finance Committee, Vacation Bible School Director, Youth Director, Director of the Singles, Director of the Senior Adults, and Music Director. The Director of Missions is to serve as Chairman and a secretary shall be elected from the group.

The purpose of the council is to coordinate the planning of the various programs of the Association, to develop an Associational calendar, and to give mutual support to the various organization and program units in carrying out their assignments.

The council shall meet quarterly.

## ARTICLE XIII. THE ASSOCIATIONAL PASTORS' CONFERENCE

The Associational Pastors' Conference provides regular meetings for the Baptist ministers of the Association. The purpose of the conference is for fellowship and mutual support, for doctrinal and professional discussion and for promotion of church, Associational and other denominational programs. The conference is not an administrative or executive body.

## ARTICLE XIV. JOB DESCRIPTION, DIRECTOR OF MISSIONS

### SECTION 1. Title and Functions.

A. Position Title. This position shall be known as the Director of Missions for the Tuckaseegee Baptist Association.

B. Basic Functions. The Director of Missions shall serve as minister to the churches and church leaders of the Tuckaseegee Baptist Association, as mission strategist for the Association, as chief administrative officer for the Association, and as a general leader of the Association.

### SECTION 2. Responsibilities.

#### A. Minister to Churches and Church Leaders.

1. The Director of Missions shall serve as pastor to the pastors of the Association. Upon request, the Director of Missions shall provide counseling and consultation for pastors regarding spiritual, vocational, congregational, personal or family concerns. The Director of Missions shall be available to assist pastors considering a move, shall orient new pastors to the Association, shall develop systems of pastoral support and fellowship, and shall provide growth opportunities for pastors.

2. Upon request, the Director of Missions shall assist and counsel pastors and church leaders regarding ministries, programs and procedures within the churches, including but not limited to building planning, budget procedures, long range or strategy planning, curriculum evaluation or review, issues of church policy and organization, church-community surveys, outreach, and spiritual growth.

3. Upon request, the Director of Missions shall assist and counsel churches regarding the calling of pastors or church staff, conflicts between a pastor and church, or conflicts within a church's fellowship. The Director of Missions shall assist churches without a pastor in their ministries and programs at their request and shall provide advice for persons considering a Christian vocation.

4. The Director of Missions shall be available upon request to preach or teach in and for churches on such occasions as revivals, pulpit supply, study courses, stewardship or missions emphasis, promotion or recognition assemblies and services, special day addresses, Vacation Bible School, and similar events.

5. The Director of Missions shall take the initiative to regularly visit churches for worship and fellowship, taking care to treat all churches as equal partners in the Association.

6. The Director of Missions shall develop opportunities to foster fellowship and mutual commitment between and among the churches.

#### B. Mission Strategist.

1. The Director of Missions shall encourage churches to develop and maintain a missions perspective and to extend their ministries and outreach beyond the local church field and community through broader involvement and cooperation with other churches in missions activities.

2. The Director of Missions shall interpret to the churches the needs of persons and groups within the Association's area and shall lead the Association to start new churches or ministry activities appropriate to the needs.

3. The Director of Missions shall encourage and lead volunteer involvement in mission activities beyond the Association's boundaries, such as home and foreign missions partnerships and disaster relief.

4. The Director of Missions shall interpret to the Association the mission work of the churches and conventions of the denomination at the state and national levels and shall encourage churches to support such work with their prayers, finances and personal commitment.

#### C. Chief Administrative Officer.

1. The Director of Missions shall administer all policies and instructions committed to that office by the Association in annual session or by the Executive Committee.

2. The Director of Missions shall work with the Executive Committee to plan, organize, coordinate, communicate and evaluate the total work of the Association.

3. The Director of Missions shall work with and assist Associational officers, committees and program leaders to implement the specific objectives of the Association and to communicate these activities to the churches and encourage their involvement.

4. The Director of Missions shall serve as an ex officio member of all committees and program departments of the Association.

5. The Director of Missions shall publish a regular Associational news medium to promote the work and fellowship of the Association among the churches and shall otherwise communicate with the churches as required.

6. The Director of Missions shall supervise the Associational office staff and any volunteers or other paid employees, full or part time, who are directly involved in ministries or activities sponsored by the Association.

7. The Director of Missions shall act as office and property manager and purchasing agent for the Association in all matters not assigned to the Trustees of the Association.

#### D. General Leader of the Association.

1. The Director of Missions shall interpret the work of the Association in the churches.

2. The Director of Missions shall maintain relationships with pertinent Baptist conventions and bodies, and especially with those denominational offices charged with Associational development and support, informing those bodies of the needs and potentialities in the Association and interpreting the overall work of the denomination to the churches.

3. The Director of Missions shall relate to other Christian and service organizations, such as local relief and assistance groups, hospital chaplaincy programs, groups that minister to the homebound or terminally ill, ministerial conferences or support groups, and similar organizations, as appropriate.

4. The Director of Missions shall relate to and represent the work of the Association to various business, social, educational, governmental and civic groups.

5. The Director of Missions shall act as chief public relations and information officer for the Association, promoting its work to the general public through the various communications media and responding to inquiries and requests for information as required.

#### SECTION 3. Terms of Employment.

A. Employment. The Director of Missions is employed by the Tuckaseegee Baptist Association.

B. Call, Termination and Interim.

1. A person shall be called to the office of Director of Missions according to the following procedures:

a. When a vacancy occurs in the office of Director of Missions, the Personnel Committee shall nominate a search committee to be elected by the Executive Committee. Election of the search committee shall take place within 30 days of the occurrence of the vacancy. If a regular meeting of the Executive Committee is not scheduled within 30 days, a special meeting shall be called by the Moderator. Executive Committee members shall be given two weeks' written notice of the names of the nominees to serve on the search committee and the date, time and place of the meeting.

b. Once elected, the search committee shall solicit and screen candidates according to qualifications and procedures which the committee shall determine. The search committee shall recommend and present one candidate for election by the Association.

c. Election of the candidate by the Association shall take place within 30 days of the search committee's decision to recommend. If the annual session of the Association is not scheduled within 30 days, a special session of the Association shall be called by the Moderator. The Association shall be given two weeks' written notice of the name of the candidate and the date, time, and place of the meeting.

d. Election of the candidate shall be by majority vote. If the candidate fails to receive a majority vote, the search committee shall be immediately dissolved and the Personnel Committee shall begin the process over again.

2. The term of service of the Director of Missions shall be indefinite. Employment of the Director of Missions may be terminated according to the following procedures:

a. The Director of Missions may resign by giving written notice 60 days in advance. The resignation may be accepted on behalf of the Association by the Executive Committee in regular or called session. By mutual agreement of the Director of Missions and the Executive Committee, the period of 60 days' notice may be waived.

b. The Director of Missions may be involuntarily terminated by the Association in annual or called session.

(1) No final action to terminate the Director of Missions shall occur unless both the Director of Missions and the Association have endeavored to resolve any existing conflict by lesser means. In addition, no final action to terminate the Director of Missions shall occur without prior investigation by the Personnel Committee according to established grievance procedures. The Personnel Committee shall then make a report of its findings to the Association. The Association shall consider, but shall not be bound by or required to follow, the recommendations of the Personnel Committee. If such an investigation and report has not occurred, any action to terminate the Director of Missions shall be referred to the Personnel Committee for investigation before final action is taken.

(2) Action by the Association to terminate the Director of Missions, whether in annual or called session, shall require 30 days' written notice to the Association following completion of the Personnel Committee's investigation. Action to terminate shall be by majority vote.

(3) If the Association in session votes to terminate, the Director of Missions shall receive full pay and benefits for a period of 60 days following the effective date of the termination.

3. When a vacancy occurs in the office of Director of Missions, the Executive Committee may elect an Interim Director of Missions according to the following procedure:

a. The Personnel Committee shall recommend a candidate, negotiate terms of employment, and present the recommendations to the Executive Committee for approval. Such election may take place at the same time and in the same manner as election of the search committee, or at any other appropriate time.

b. The Personnel Committee shall supervise the work of the Interim Director of Missions. Authority to extend, terminate, or otherwise change the terms of employment of the Interim Director of Missions shall be retained by the Executive Committee.

C. Accountability.

1. The Director of Missions shall be supervised by the Personnel Committee acting on behalf of the Association.
2. The Personnel Committee shall arrange for an annual evaluation of the Director of Missions.
3. The Personnel Committee shall establish a grievance policy to provide an orderly and appropriate process to hear grievances and complaints against the Director of Missions by members or churches of the Association.

D. Pay and Benefits.

1. Salary, retirement, insurance and other financial benefits for the Director of Missions shall be proposed by the Budget and Finance Committee and established by the Association in the annual budget. The Budget and Finance Committee shall solicit recommendations concerning pay and benefits for the Director of Missions from the Personnel Committee, but shall not be bound to accept those recommendations.

2. Travel allowance for the Director of Missions shall be deemed by the Association to be a business expense and not a personal benefit for the Director of Missions.

3. The Director of Missions shall receive two weeks paid vacation annually. The period of two weeks shall incorporate ten working days, including two Sundays. Unused vacation shall not accrue to the following year.

4. The Director of Missions shall receive sick leave at the rate of one day per month, accruing on the first day of the month, not to exceed 120 working days. Additional sick leave may be credited against future months. If the Director of Missions is involuntarily terminated by the Association, any unused sick leave accrued shall be financially reimbursed to the Director of Missions in addition to the 60 days' pay and benefits required by the act of termination.

5. The Director of Missions shall be granted one day off each week in addition to Saturday.

6. The following holidays shall be observed: New Year's Day, Easter Monday, Memorial Day, July 4, Labor Day, Thanksgiving Thursday and Friday, and December 25 and 26 at Christmas.

7. The Association acknowledges the flexibility of schedule required by the Director of Missions. The Director of Missions' time shall be organized in a professional manner, with the work schedule devoted to activities that will benefit the work of the Association, whether in the office or on the field and whether during the normal work day or at night. The Director of Missions shall establish office hours for the office secretary and shall be available, either through personal office hours or some other established procedure, to any in the Association needing assistance.

8. The Director of Missions may attend denominational conventions and meetings, continuing education and professional development events, and other assemblies and conferences pertaining to the work of the office. The Association through its annual budget may reimburse the Director of Missions for expenses incurred while attending such meetings.

9. The Director of Missions may use up to three weeks of paid leave annually to lead or participate in revivals, world missions conferences, and similar meetings outside the Association, which result in an honorarium or other reimbursement above and beyond expenses. The Director of Missions may lead revivals and conferences within the Association as schedule permits, such activities being included in the job responsibility of minister to the churches of the Association.

10. The Director of Missions may serve as interim pastor of a church or churches in the Association. Such activity may not exceed three months in a given calendar year without prior approval of the Personnel Committee. The Director of Missions may engage in pulpit supply and similar activities as schedule permits, such activities being included in the job responsibility of minister to the churches of the Association.

11. The Director of Missions may lead or participate in mission trips, mission partnerships, disaster relief, and other direct mission opportunities outside the Association, such activities being included in the job responsibility of mission strategist for the Association. Such activities may not exceed three weeks in a given calendar year without prior approval of the Personnel Committee.

12. The Director of Missions shall keep a record of leave and time spent off the Associational field, including vacation, sick leave, conventions and conferences, continuing education events, revivals and similar meetings, and mission trips. The record shall be submitted to and maintained by the Treasurer of the Association.

13. The Director of Missions shall be free to use off duty time to engage in personal activities and pursuits. Such activities shall not interfere with the professional responsibilities or activities and meetings that require the presence of the Director of Missions. The Director of Missions shall be aware that all personal activities reflect on the office and the job responsibility of general leader of the Association.

14. No honorarium shall be expected or required for any service performed by the Director of Missions in conjunction with official duties. However, any individual, group or church is free to present an honorarium if they so desire, and such may be retained by the Director of Missions and not submitted to the Association.

SECTION 4. Adoption.

A. This job description supersedes, repeals and takes the place of any conflicting articles or statements in this Constitution or other documents of the Association.

B. The Personnel Committee shall be responsible to maintain, update and revise this job description as required, making recommendations to the Association for approval as they are needed.

#### ARTICLE XV. AMENDMENTS

The constitution may be amended at any annual meeting of the Association by a two-thirds majority of the messengers present and voting, provided the amendment has been presented to the Constitutional Committee at least 10 days prior to the annual meeting and presented to the Association in printed form on the first day of the annual meeting to be voted on the second day.

#### ARTICLE XVI. NON-PROFIT STATUS

The Tuckaseegee Baptist Association, Inc. is organized exclusively for charitable, religious, and educational purposes, including, for such purposes, the making of distributions to organizations that qualify as exempt organizations under Section 501(c)(3) of the Internal Revenue Code of 1986.

No part of the Tuckaseegee Baptist Association, Inc. shall inure to the benefit of its' members, directs, officers, or other persons except that the organization shall be authorized and empowered to pay reasonable compensation for services rendered and to make payments and distributions in furtherance of the exempt purposes of the organization.

In the event of dissolution, the residual assets of the Tuckaseegee Baptist Association, Inc. will be turned over to one or more organizations with similar purposes which are exempt as organizations described in Section 501(c)(3) of the Internal Revenue Code of 1986.



### Pastors

Big Ridge	Tad	Thompson	PO Box 731	Dillsboro	NC	28725	586-8361
Buff Creek	Gerald	Morris	1274 Mineral Springs Road	Sylva	NC	28779	586-5784
Calvary	Dennis	Burrell	11897 Canada Rd.	Tuckasegee	NC	28783	293-5823
Cashiers	Art	Fowler	P O Box 2584	Cashiers	NC	28717	743-3182
Cullowhee Valley	Terry	Taylor	184 Greenline Court	Whittier	NC	28789	497-9597
Dicks Creek	Rick	Conner	25 Wild Rose Dr.	Whittier	NC	28789	586-2206
East Fork	Cecil	Fraday	765 Fred Smith Rd	Tuckasegee	NC	28783	293-9677
Faith	Gene	Hawkins	6 Hallelujah Drive	Franklin	NC	28734	524-4613
Greens Creek	John	Kinsland	83 North Main St.	Canton	NC	28716	648-4243
Hamburg	Brad	Hughes	PO Box 67	Glenville	NC	28736	
Hamburg	Matthew	Ledbetter	4705 Hwy. 107 North	Glenville	NC	28736	743-2123
Hyatts Chapel	Dale	Roberts	2093 Old Balsam Rd	Waynesville	NC	28786	456-6875
Jarrett Memorial	Cory	Boone	5 Wild Rose Dr.	Whittier	NC	28789	631-0676
Liberty	Charles	Lee	PO Box 2134	Sylva	NC	28779	
Little Savannah	Kent	Lowdermilk	1067 Orion Davis Road	Waynesville	NC	28786	456-6739
Locust Field	Charles	Carnes	P O Box 255	Dillsboro	NC	28725	586-6492
Long Branch	Avery	Brown	196 Lonely Violet Lane	Sylva	NC	28779	631-9683
Lovedale	Mike	Farmer	729 Fisher Creek Rd	Sylva	NC	28779	586-6530
Lumberton	Al	Cauley	265 Blackwood Rd	Cullowhee	NC	28723	293-9135
Moses Creek	Robert	Fernandez	P O Box 2153	Sylva	NC	28779	586-2630
Mt. Pleasant	Jack	Robinson	10 Estes Drive	Waynesville	NC	28786	454-0330
New Hope	Mike	Moore	95 Bidwell Drive	Whittier	NC	28789	497-9860
New Savannah	Ray	Knowles	957 Cabe Rd.	Sylva	NC	28779	586-6729
Ochre Hill	Johnny	Norris	5059 US 74 E	Sylva	NC	28779	586-6993
Old Savannah	David	Souderes	37 Saunook Rd.	Waynesville	NC	28786	456-3174
Pine Creek	Gary	McCoy	1716 Lake Emory Rd	Franklin	NC	28734	369-8971
Promise Land	Larry	Bryson	2635 Wayehutta Road	Cullowhee	NC	28723	293-9461
Rockdale	Ray	Fox	1525 Shepherd's Creek Rd	Bryson City	NC	28713	488-2876
Scotts Creek	Richard	Peoples	97 Steeple Road	Sylva	NC	28779	586-2631
Shoal Creek	Mike	Dellinger	PO Box 238	Webster	NC	28788	421-1104
Sols Creek	Michael	Queen	4 Precious Moments Dr.	Cullowhee	NC	28723	293-9892
Speedwell	Clemmey	Queen	220 Frosty Ridge Road	Sylva	NC	28779	586-8616
Tilley Creek	Clifford	Parker	387 Scotts Creek Rd	Sylva	NC	28779	586-9647
Unity	Gerald	Conner	984 Orion Davis Road	Waynesville	NC	28786	456-8914
Webster	Lloyd	Fish	234 Mashburn St.	Franklin	NC	28734	369-5672
Wilkesdale	Terry	Jenkins	155 Round Stone Dr.	Franklin	NC	28734	369-9639
Zion Hill	Steve	Webb	29 Living Water Drive	Cullowhee	NC	28723	293-5583

### Ministers of Music

Buff Creek	Kim	Mathis	402 Fisher Creek Rd.	Sylva	NC	28779	586-0758
Calvary	David	Bowers, Jr.	159 Gardenview Drive	Sylva	NC	28779	631-0623
Cashiers	Rita	Fowler	PO Box 2584	Cashiers	NC	28717	743-3182
Cullowhee Valley	Shirley	Pressley	P O Box 1437	Cullowhee	NC	28723	293-5001
East Fork	Andrew	Cabe	19 Woodrow Deitz Rd	Sylva	NC	28779	586-6728
Faith	David	Proffitt	P O Box 126	Sylva	NC	28779	586-1615
Greens Creek	Aileen	Green	162 Valley Springs Dr	Sylva	NC	28779	586-4677
Hamburg	Kaye	Jennings	PO Box 21	Glennville	NC	28736	743-3041
Hyatts Chapel	Kent	Moore	201 Martin Rd.	Whittier	NC	28789	497-2619
Jarrett Memorial	Mike	Deitz	P O Box 902	Sylva	NC	28779	586-8395
Liberty	Margaret	Miller	P O Box 382	Sylva	NC	28779	586-2044
Little Savannah	Cathy	Lowdermilk	1067 Orion Davis Rd	Waynesville	NC	28786	456-6739
Locust Field	Scotty	Coggins	194 Rich Drive	Whittier	NC	28789	586-1789
Long Branch	Harold	Wilkey	610 Joe Wilkey Road	Sylva	NC	28779	586-4962
Lovedale	Eddie	Potts	314 Cardinal Dr.	Sylva	NC	28779	586-4258
Lumberton	Gladys	Cauley	265 Blackwood Road	Cullowheee	NC	28723	293-9135
Moses Creek	Arthur	Stephens	95 Genesis Trail Drive	Sylva	NC	28779	586-6479
Mt Pleasant	Jack	Hoyle	1040 Henry Road	Sylva	NC	28779	586-4446
New Hope	Emery	Brooks	P O Box 841	Cullowhee	NC	28723	631-0933
New Savannah	Terry	Clayton	PO Box 2314	Sylva	NC	28779	631-0499
Ochre Hill	Cindy	Ensley	987 Racking Cove Rd	Sylva	NC	28779	586-8039
Old Savannah	John	Estes	219 Sutton Branch Rd	Sylva	NC	28779	586-9609
Rockdale	Ronda	Denton	99 Tryon Estate Rd	Whittier	NC	28789	631-4157
Scotts Creek	Mike	Nichols	P O Box 506	Sylva	NC	28779	586-4802
Shoal Creek	Traci	Clark	40 Boxwood Drive	Whittier	NC	28789	497-6279
Speedwell	Lenn	Wilkes	1358 Pressley Creek Rd	Cullowhee	NC	28723	293-9400
Tilley Creek	Pam	Buchanan	2991 Tilley Ck Rd	Cullowhee	NC	28723	
Webster	Deanna	Wright	316 Joe Branch Rd	Whittier	NC	28789	586-3635
Wilkesdale	Jim	Barnes	53 Henson Street	Sylva	NC	28779	586-4489
Zion Hill	Raymond	Sorrells		Cullowhee	NC	28723	

### Youth Workers

Buff Creek	Gracella	Morris	1274 Mineral Springs Rd	Sylva	NC	28779	586-5784
Calvary	Cathey	Ashe	726 Calvary Church Rd	Sylva	NC	28779	586-4202
Cashiers	Missy	Fowler	PO Box 2547	Cashiers	NC	28717	743-1737
Cashiers	Ron	Fowler	PO Box 2547	Cashiers	NC	28717	743-1737
Dicks Creek	Kathy	Stiles	62 Wild Rose Drive	Whittier	NC	28789	586-4823
East Fork	Richard	Young	187 Woodrow Deitz Rd	Sylva	NC	28779	631-5260
Hamburg	Brad	Hughes	PO Box 67	Glenville	NC	28736	
Little Savannah	Mike	Taylor	123 One Horse Farm Rd	Sylva	NC	79-6975	586-2727
Locust Field	Gail	McMahan	73 Lee Bumgarner Rd	Sylva	NC	28779	586-6225
Long Branch	Kathy	Brown	360 Ferguson Rd.	Sylva	NC	28779	631-1598
Moses Creek	Mrs. Kelli	Watson	PO Box 2026	Sylva	NC	28779	586-0830
Mt. Pleasant	Karen	Reed	292 Canter Lane	Sylva	NC	28779	631-2975
New Hope	Emery	Brooks	P O Box 841	Cullowhee	NC	28723	631-0933
New Hope	Jessie	Stewart	250B Henson St	Sylva	NC	28779	631-5449
New Savannah	Sean	Bryson	136 Lacy Fern Drive	Sylva	NC	28779	586-0879
Ochre Hill	Chris & Julie	Woodard	148 Posey Blanton Rd	Sylva	NC	28779	586-1574
Old Savannah	James & Pam	Buchanan	141 Spirit Mountain Rd	Sylva	NC	28779	586-0044
Pine Creek	Carla	Tucker	246 Taylor Creek Rd.	Cullowhee	NC	28723	743-1724
Promise Land	Ann	Bryson	711 Indian Mound Rd	Cullowhee	NC	28723	
Rockdale	Agnes	Hawkins	7550 US HWY 74W	Whittier	NC	28789	586-5884
Webster	Jackie	Moore	222 Hidden Spring Rd	Whittier	NC	28789	497-6101
Webster	David	Youmons	55 Little Savannah Rd	Sylva	NC	28779	586-8353
Webster	Tammie	Youmons	55 Little Savannah Rd	Sylva	NC	28779	586-8353

### Children Workers

Buff Creek	Carolyn	Morris	84 Happy Valley Rd.	Sylva	NC	28779	631-0043
Calvary	Sandra	Bowers	159 Gardenview Dr	Sylva	NC	28779	631-0623
Cashiers	Carlton	Fowler	1081 Breedlove Rd.	Glenville	NC	28736	743-5017
Dicks Creek	Kay	Conner	25 Wild Rose Dr.	Whittier	NC	28789	586-2206
Moses Creek	Carol	Bauer	8518 Caney Fork Rd	Cullowhee	NC	28723	293-1002
Moses Creek	Wanda	Fernandez	P O Box 2153	Sylva	NC	28779	
New Hope	Misty	Fisher	617 Evans Rd	Sylva	NC	28779	586-0545
New Savannah	Kitty	Bryson	136 Lacy Fern Drive	Sylva	NC	28779	586-0879
Ochre Hill	Russell	Ensley	312 Ferguson Road	Sylva	NC	28779	631-3726
Old Savannah	Danny & Wanda	Hall	39 Sweetwater Drive	Whittier	NC	28789	586-4504
Promise Land	Kathy	Kelley	440 East Rodgers Rd	Cullowhee	NC	28723	
Rockdale	Annette	Hawkins	PO Box 435	Whittier	NC	28789	497-5409
Webster	Patricia	McCall	219 Camelot Crest	Sylva	NC	28779	586-4584
Wilkesdale	Elizabeth	Jenkins	155 Round Stone Dr.	Franklin	NC	28734	369-9639

### Preschool Workers

Buff Creek	Kim	Mathis	402 Fisher Creek Rd.	Sylva	NC	28779	586-0758
Cashiers	Erlene	Madden	PO Box 1363	Cashiers	NC	28717	743-5348
Cashiers	James	O'Berry	PO Box 243	Cashiers	NC	28717	743-3595
Cashiers	Robin	O'Berry	PO Box 243	Cashiers	NC	28717	743-3595
Dicks Creek	Kay	Conner	25 Wild Rose Dr.	Whittier	NC	28789	586-2206
Moses Creek	Carol	Bauer	8518 Caney Fork Rd	Cullowhee	NC	28723	293-1002
New Hope	Barbara	Bryson	144 Mint Rd	Sylva	NC	28779	586-5665
Old Savannah	Mary	Barker	PO Box 551	Dillsboro	NC	28725	586-5062

### Recreation Workers

Buff Creek	Jim	Beasley	344 Lee Street	Sylva	NC	28779	586-4714
Calvary	Cathey	Ashe	726 Calvary Church Rd	Sylva	NC	28779	586-4202
Calvary	Sandra	Bowers	159 Gardenview Dr	Sylva	NC	28779	631-0623
Long Branch	Norma	Rogers	PO Box 2089	Sylva	NC	28779	586-2020
New Hope	Misty	Fisher	617 Evans Rd	Sylva	NC	28779	586-0545

### Sunday School Directors

Buff Creek	Tim	Mathis	400 Fisher Creek Rd	Sylva	NC	28779	586-6798
Cashiers	Ed	Madden	PO Box 1363	Cashiers	NC	28717	743-5348
Cashiers	Richard	McCall	225 Berry Mountain Rd.	Cashiers	NC	28717	586-8174
Dicks Creek	Willis	Brown	1280 Dicks Creek Rd.	Whittier	NC	28789	586-6131
East Fork	Denny	Wood	284 East Fork Church Road	Sylva	NC	28779	586-0057
Faith	David	Proffitt	P O Box 126	Sylva	NC	28779	586-1615
Greens Creek	Allen	Garner	310 Sugar Fork Road	Sylva	NC	28779	586-4698
Hamburg	Verner	Rice	PO Box 882	Cashiers	NC	28717	743-2678
Hyatts Chapel	Cance	Carnes	P O Box 85	Dillsboro	NC	28725	586-4865
Jarrett Memorial	Perry	Sutton	P O Box 69	Dillsboro	NC	28725	586-2635
Liberty	Minnie	Casey	P O Box 2134	Sylva	NC	28779	586-5210
Little Savannah	Mike	Taylor	123 One Horse Farm Rd	Sylva	NC	79-6975	586-2727
Locust Field	Roy	Young	P O Box 1972	Sylva	NC	28779	586-8176
Long Branch	Roy	Dalton	374 South Piney Mtn	Whittier	NC	28789	586-6638
Lovedale	Hugh	Davis	976 Brooks Branch Rd	Sylva	NC	28779	586-1553
Moses Creek	Jason	Watson	35 Scenic Drive	Sylva	NC	28779	586-0830
Mt Pleasant	Jack	Hoyle	1040 Henry Road	Sylva	NC	28779	586-4446
New Hope	Craig	Tucker	PO Box 614	Webster	NC	28788	631-9592
New Savannah	Barry	Foxx	643 Perley Hyatt Rd	Sylva	NC	28779	586-5233
Ochre Hill	Jim	Revis	114 Ferguson Rd	Sylva	NC	28779	586-6309
Old Savannah	Greg	White	375 Nighthawk Dr	Sylva	NC	28779	586-2612
Pine Creek	Leland	Cooper	3606 Yellow Mtn Rd	Cullowhee	NC	28723	743-2597
Rockdale	Melvin	Barnes	186 Fremont Drive	Whittier	NC	28789	586-2517
Scotts Creek	Jim	Hage	83 Daybreak Ridge	Sylva	NC	28779	586-9892
Shoal Creek	Ella	Wright	383 Paul Cooper Rd	Whittier	NC	28789	497-5692
Speedwell	Dennis	Coggins	5280 Cullowhee Mtn Rd	Cullowhee	NC	28723	293-9557
Speedwell	Michael	Coggins	5280 Cullowhee Mtn Rd	Cullowhee	NC	28723	293-9557
Tilley Creek	Steven	Buchanan	2991 Tilley Ck Rd	Cullowhee	NC	28723	
Unity	Bobby	Watson	77 Watson Br Rd	Cullowhee	NC	28723	293-3170
Webster	Janice	Steins	307 Briar Cliff Dr.	Sylva	NC	28779	586-6623
Wilkesdale	Alvin	Henson	P O Box 1816	Sylva	NC	28779	586-6069
Zion Hill	Allen	Ballew	255 Pumpkintown Road	Sylva	NC	28779	
Calvary	Chris	Bowers	114 Pondview Dr.	Sylva	NC	28779	586-8526

### Discipleship Directors

Cashiers	James	O'Berry	PO Box 243	Cashiers	NC	28717	743-3595
Greens Creek	JoAnn	Garner	310 Sugar Fork Rd	Sylva	NC	28779	586-4698
Hamburg	Jeff	Davis	3694 Big Ridge Rd	Glenville	NC	28736	743-5151
Jarrett Memorial	Ray	Buchanan	P O Box 215	Dillsboro	NC	28725	586-5492
Long Branch	Steve	Lillard	384 Billy Cove Rd.	Sylva	NC	28779	631-9650
New Hope	Mike	Moore	95 Bidwell Drive	Whittier	NC	28789	497-9860
Wilkesdale	Christine	Painter	260 Painter Street	Sylva	NC	28779	586-2344

Treasurers

Buff Creek	Connie	Flesch	296 Maple Springs Rd.	Sylva	NC	28779	631-3985
Calvary	Marshall	Bradley	204 Mayflower Lane	Sylva	NC	28779	586-4949
Cashiers	Carol	Hunter	PO Box 453	Cashiers	NC	28717	743-3618
Cullowhee Valley	Gladys	German	P O Box 2602	Cullowhee	NC	28723	293-5098
Dicks Creek	Gail	Clawson	27 Wild Rose Drive	Whittier	NC	28789	586-8464
East Fork	Alice	Cabe	2224 East Fork Rd	Sylva	NC	28779	586-4621
Faith	Cindy	Rigdon	P O Box 242	Webster	NC	28788	586-6040
Greens Creek	Lynn	Mooneyham	343 Little Cove Rd	Sylva	NC	28779	
Hamburg	Martha	Jennings	P O Box 31	Glenville	NC	28736	743-2366
Hyatts Chapel	Ann	Ball	13 Teigue Cove Rd	Whittier	NC	28789	497-2603
Jarrett Memorial	Ray	Buchanan	P O Box 215	Dillsboro	NC	28725	586-5492
Liberty	Minnie	Casey	P O Box 2134	Sylva	NC	28779	586-5210
Little Savannah	Carolyn	Lewis	66 One Horse Farm Rd	Sylva	NC	28779	586-5261
Locust Field	Virginia	Pangle	P O Box 99	Dillsboro	NC	28725	586-4896
Long Branch	Clara B.	Wilkey-Cogdill	729 Thornhill Drive	Sylva	NC	28779	586-5177
Lovedale	Carroll	Hall	113 Mercury Drive	Sylva	NC	28779	586-5690
Lumberton	Rita	Hooper	6591 Caney Fork Rd	Cullowhee	NC	28723	293-9864
Moses Creek	Carolyn	Cook	29 South Woods Drive	Sylva	NC	28779	586-2086
Mt Pleasant	Carol	Cagle	6245 Skyland Drive	Sylva	NC	28779	586-9798
New Hope	Glenda	Owens	75 Iron Mountain Drive	Sylva	NC	28779	586-3947
New Savannah	Anne	Cabe	PO Box 703	Sylva	NC	28779	586-4915
Ochre Hill	Rob	Sutton	5589 US 74 E	Sylva	NC	28779	586-4651
Old Savannah	Bobby	Hensley	PO Box 628	Dillsboro	NC	28725	586-8649
Pine Creek	Barbara	Henderson	4484 Pine Creek Rd	Cullowhee	NC	28723	743-2345
Rockdale	Gail	Allen	1200 Barkers Creek Rd	Whittier	NC	28789	586-6883
Shoal Creek	Vividean	Kinsland	1950 Hwy 441N	Whittier	NC	28789	497-4624
Sols Creek	Ernest	Bryson	721 Sols Cr Church Rd	Tuckasegee	NC	28783	
Speedwell	Becky	Wilkes	1356 Pressley Creek Rd	Cullowhee	NC	28723	293-5157
Tilley Creek	Geralene	Ashe	65 Living Water Drive	Cullowhee	NC	28723	
Unity	Marian	Aldridge	229 Triple Fork Rd	Cullowhee	NC	28723	293-5963
Webster	Herb	Van Der Ven	PO Box 798	Whittier	NC	28789	497-5969
Wilkesdale	Linda	Proctor	P O Box 1814	Sylva	NC	28779	586-5868
Zion Hill	Cale	Wilson	3110 Pumpkintown Rd.	Sylva	NC	28779	586-3483

Stewardship Directors

Little Savannah	Carolyn	Lewis	66 One Horse Farm Rd	Sylva	NC	28779	586-5261
Speedwell	Marvin	Wilkes	1356 Pressley Creek Rd	Cullowhee	NC	28723	293-5157

### Pianists

Buff Creek	Shirley	Beasley	344 Lee St	Sylva	NC	28779	586-4714
Calvary	Susanne	Allison	511 Cagle Br. Rd.	Sylva	NC	28779	586-6829
Cashiers	Marvetta	Mills	218 Treasurewood Rd.	Glenville	NC	28736	743-1807
Cullowhee Valley	Elaine	Haskett	1382 Pressley Creek Rd	Cullowhee	NC	28723	293-9436
Dicks Creek	Gail	Clawson	27 Wild Rose Drive	Whittier	NC	28789	586-8464
East Fork	Doris	Fraday	80 Christmas Tree Lane	Sylva	NC	28779	631-0235
Faith	Suzanne	Hyde	118 Winnipeg Lane	Sylva	NC	28779	586-3713
Greens Creek	Belinda	Allison	PO Box 249	Dillsboro	NC	28725	586-8615
Hamburg	Lisa	Ansari	PO Box 161	Glenville	NC	28736	743-5704
Hyatts Chapel	Opal	Ward	Hwy 441	Whittier	NC	28789	
Jarrett Memorial	Kim	Lambert	PO Box 66	Dillsboro	NC	28725	631-3445
Locust Field	Rita	Norris	610 Roscoe Lewis Rd	Sylva	NC	28779	586-2801
Lovedale	Elaine	Melton	63 Pecan Drive	Sylva	NC	28779	586-9683
Moses Creek	Charles	Stephens	741 Posey Blanton Rd	Sylva	NC	28779	586-6813
Mt Pleasant	Patsy	Mathis	230 Hebron Lane	Sylva	NC	28779	586-8520
New Hope	Aletta	Buchanan	PO Box 35	Dillsboro	NC	28725	586-6427
New Savannah	Larry	Mashburn	708 Brendle Rd.	Franklin	NC	28734	524-6766
Ochre Hill	Jean	McMahan	493 Racking Cove Rd	Sylva	NC	28779	586-8829
Old Savannah	Martha	Patterson	769 Rufus Robinson Rd	Sylva	NC	28779	586-2456
Pine Creek	Linda	Moss	380 Taylor Creek Rd	Cullowhee	NC	28723	743-2570
Rockdale	Glenda	Barnes	186 Fremont Drive	Whittier	NC	28789	586-2517
Scotts Creek	Rhonda	Woodard	PO Box 22	Sylva	NC	28779	586-4693
Shoal Creek	Bobbie	Henderson	80 Boxwood Drive	Whittier	NC	28789	497-9887
Speedwell	Kelly	Bowers	55 Puffy Lane	Sylva	NC	28779	586-9104
Speedwell	Dana	Wilkes	1358 Pressley Creek Rd	Cullowhee	NC	28723	293-9400
Tilley Creek	Christy	Gunter	65 Living Water Drive	Sylva	NC	28779	
Unity	Marian	Aldridge	229 Triple Fork Rd	Cullowhee	NC	28723	293-5963
Webster	Kay	Collins	P O Box 454	Webster	NC	28788	586-9606
Wilkesdale	Irene	Stewart	9 Wilkesdale Street	Sylva	NC	28779	586-4573
Zion Hill	Kay	Franks	187 Garnet Rd	Sylva	NC	28779	

### Organists

Buff Creek	Charlie	McClure	65 Charmac Dr	Sylva	NC	28779	586-5383
Calvary	Clara	Summers	Calvary Church Rd	Sylva	NC	28779	586-2090
Cashiers	Marlene	Fowler	P O Box 22	Cashiers	NC	28717	743-2350
Greens Creek	Joyce	Green	2258 Greens Creek Rd	Sylva	NC	28779	586-4695
Locust Field	Peggy	Thomas					
Lovedale	Shelia	Frizzell	760 Ashe Loop Rd	Sylva	NC	28779	586-9317
New Hope	Sue	Norman	1986 Brasstown Rd	Cullowhee	NC	28723	293-7412
Ochre Hill	Jessie	Jones	187 Allman Rd	Sylva	NC	28779	586-2957
Old Savannah	Jerri	Hensley	419 Elk Road	Sylva	NC		586-8649
Rockdale	Kim	Saunooke	764 Thomas Valley Rd	Whittier	NC	28789	586-5794
Scotts Creek	Frank	Berry	P O Box 343	Whittier	NC	28789	497-9384
Shoal Creek	Bobbie	Henderson	80 Boxwood Drive	Whittier	NC	28789	497-9887

### Woman's Missionary Union Directors

Buff Creek	Eloise	Shuler	757 Buff Creek Road	Sylva	NC	28779	586-6080
Cashiers	Donnie	Madden	95 South Hwy. 107	Cashiers	NC	28717	743-2498
Greens Creek	Joyce	Green	2258 Greens Creek Rd	Sylva	NC	28779	586-4695
Hamburg	Viola	Bryson	PO Box 6	Glenville	NC	28736	743-2146
Jarrett Memorial	Audrey	Buchanan	P O Box 215	Dillsboro	NC	28725	586-5492
Liberty	Margaret	Miller	P O Box 382	Sylva	NC	28779	586-2044
Locust Field	Gail	McMahan	73 Lee Bumgarner Rd	Sylva	NC	28779	586-6225
Lovedale	Freda	Queen	36 Slo-Gait Lane	Sylva	NC	28779	586-2871
Mt. Pleasant	Georgia	Strother					
New Hope	Thereasa	Wood	84 Mint Road	Sylva	NC	28779	586-5357
Ochre Hill	Lee Anne	Burrell	8 Allison Cove Rd	Sylva	NC	28779	586-3699
Old Savannah	Marsha	Bates					
Scotts Creek	Jean	Keener	5397 US 74E	Sylva	NC	28779	586-4276
Shoal Creek	Esther	Cole	199 Harley Cole Rd	Whittier	NC	28789	497-5663
Wilkesdale	Evelyn	Barnes	53 Henson Street	Sylva	NC	28779	586-4489
Zion Hill	Helen	Bowers	459 Long View Drive	Sylva	NC	28779	586-8791

### Brotherhood Directors

Buff Creek	Gerald	Morris	1274 Mineral Springs Roa	Sylva	NC	28779	586-5784
Cashiers	Ray	Fowler	P O Box 22	Cashiers	NC	28717	743-5348
Hamburg	Cal	Owens	PO Box 65	Cashiers	NC	28717	743-3421
Ochre Hill	Rob	Sutton	5589 US 74 E	Sylva	NC	28779	586-4651

### Missions Development Director

New Savannah	Russ	Cagle	PO Box 1898	Sylva	NC	28779	631-0184
--------------	------	-------	-------------	-------	----	-------	----------

### Prayer Ministry Coordinators

Buff Creek	Clara	Shuler	36 Cypress Ln	Sylva	NC	28779	586-2874
Calvary	Allen	Cagle	114 Big Burn Circle	Sylva	NC	28779	586-6691
Cashiers	Joyce	Madden	PO Box 284	Cashiers	NC	28717	743-3983
Hamburg	Lana	Ledbetter	4705 Hwy. 107 North	Glenville	NC	28736	743-2123
Long Branch	Steve	Lillard	384 Billy Cove Rd.	Sylva	NC	28779	631-9650
Lovedale	Mike	Farmer	729 Fisher Creek Rd	Sylva	NC	28779	586-6530
New Hope	Mildred	Harris	45 Rolling Green Dr	Sylva	NC	28779	586-4361
New Savannah	Andi	Clayton	PO Box 1898	Sylva	NC	28779	631-0499

### Media Library Directors

Greens Creek	Joyce	Green	2258 Greens Creek Rd	Sylva	NC	28779	586-4695
Hamburg	Brenda	Jennings	PO Box 31	Glenville	NC	28736	743-2366
Ochre Hill	Hattalean	Norman	60 Welcome Ridge	Sylva	NC	28779	586-0226

Clerks

Buff Creek	Erna	Shaffer	1126 Buff Creek Rd	Sylva	NC	28779	586-8021
Calvary	Ruby	Allison	724 Calvary Church Rd	Sylva	NC	28779	586-6256
Cashiers	Marlene	Fowler	P O Box 22	Cashiers	NC	28717	743-2350
Cullowhee Valley	Elaine	Haskett	1382 Pressley Creek Rd	Cullowhee	NC	28723	293-9436
Dicks Creek	Gail	Clawson	27 Wild Rose Drive	Whittier	NC	28789	586-8464
East Fork	Barbara	Cabe	19 Woodrow Deitz Rd	Sylva	NC	28779	586-6728
Faith	Suzanne	Hyde	118 Winnipeg Lane	Sylva	NC	28779	586-3713
Greens Creek	Eula	Frizzell	16 Newberry Dr	Sylva	NC	28779	586-5370
Hamburg	Sheila	Owens	PO Box 65	Cashiers	NC	28717	743-3421
Hyatts Chapel	Ann	Ball	13 Teigue Cove Rd	Whittier	NC	28789	497-2603
Jarrett Memorial	Joan	Shepherd	1663 East Cope Creek Rd	Sylva	NC	28779	586-4784
Little Savannah	Darlene	Taylor	123 One Horse Farm Rd	Sylva	NC	79-6975	586-2727
Locust Field	Rita	Norris	610 Roscoe Lewis Rd	Sylva	NC	28779	586-2801
Long Branch	Clara B.	Wilkey-Cog	729 Thornhill Drive	Sylva	NC	28779	586-5177
Lovedale	Hazel	Monteith	119 Griffin Street	Sylva	NC	28779	586-2640
Lumberton	Betty Sue	Moore	331 Blackwood Rd	Cullowhee	NC	28723	293-9147
Moses Creek	Arthur	Stephens	95 Genesis Trail Drive	Sylva	NC	28779	586-6479
Mt. Pleasant	Karen	Reed	292 Canter Lane	Sylva	NC	28779	631-2975
New Hope	Margie	Morrison	107 Peacock Ridge	Sylva	NC	28779	631-0390
New Savannah	Darlene	Cagle	PO Box 1898	Sylva	NC	28779	586-9750
Ochre Hill	Nancy	Nichols	8 Stone Wall Rd	Whittier	NC	28789	586-4581
Old Savannah	Angie	White	375 Nighthawk Dr	Sylva	NC	28779	586-2612
Pine Creek	Barbara	Henderson	4484 Pine Creek Rd	Cullowhee	NC	28723	743-2345
Promise Land	Delores	Jones	PO Box 114	Tuckasegee	NC	28783	
Rockdale	Jennie	Miller	35 Tanglewood Dr	Whittier	NC	28789	586-6392
Scotts Creek	Eleanor	Berry	PO Box 343	Whittier	NC	28789	497-9384
Shoal Creek	Sharon	Bryson	95 Welch Road	Bryson City	NC	28713	488-3527
Sols Creek	Gerdind	Brown	721 Sols Creek Church Rd	Tuckasegee	NC	28783	293-9664
Speedwell	Ida Mae	Wilkes	1372 Pressley Creek Rd	Cullowhee	NC	28723	293-5327
Tilley Creek	Geralene	Ashe	65 Living Water Drive	Cullowhee	NC	28723	
Unity	Marian	Aldridge	229 Triple Fork Rd	Cullowhee	NC	28723	293-5963
Webster	Wayne	Caldwell	2064 Cope Creek Rd	Sylva	NC	28779	586-4759
Wilkesdale	Wanda	Henson	PO Box 1816	Sylva	NC	28779	586-6069
Zion Hill	Mary	Wilson	3110 Pumpkintown Rd.	Sylva	NC	28779	586-3483



Secretaries

Buff Creek	Maxine	Messer	P O Box 2	Webster	NC	28788	586-5921
Buff Creek	Virginia	Mull	783 Skyland Dr	Sylva	NC	28779	586-8482
Calvary	Laverne	Jones	567 Blake Branch	Sylva	NC	28779	586-6609
Calvary	Kelli	Richmond	PO Box 1832	Dillsboro	NC	28725	586-6325
Cashiers	Rita	Fowler	PO Box 2584	Cashiers	NC	28717	743-3182
Cullowhee Valley	Gladys	German	P O Box 2602	Cullowhee	NC	28723	293-5098
Dicks Creek	Gail	Clawson	27 Wild Rose Drive	Whittier	NC	28789	586-8464
East Fork	Gladys	Melton	127 Christmas Tree Lane	Sylva	NC	28779	631-1479
Faith	Suzanne	Hyde	118 Winnipeg Lane	Sylva	NC	28779	586-3713
Hamburg	Lana	Ledbetter	4705 Hwy. 107 North	Glenville	NC	28736	743-2123
Hyatts Chapel	Barbara	Carnes	PO Box 85	Dillsboro	NC	28779	586-4865
Jarrett Memorial	Betty	Parris	PO Box 4	Dillsboro	NC	28725	586-4627
Little Savannah	Carolyn	Lewis	66 One Horse Farm Rd	Sylva	NC	28779	586-5261
Locust Field	Mary Sue	Coggins	32 Carriage Lane	Sylva	NC	28779	586-9725
Long Branch	David	Dalton	374 S Piney Mountain Rd.	Whittier	NC	28789	586-6638
Long Branch	Clara B.	Wilkey-Cog	729 Thornhill Drive	Sylva	NC	28779	586-5177
Lovedale	Mildred	Haskett	79 Cardinal Dr	Sylva	NC	28779	586-5211
Lovedale	Sara	Parker	P O Box 2343	Sylva	NC	28779	586-4445
Mt Pleasant	Carol	Cagle	6245 Skyland Drive	Sylva	NC	28779	586-9798
New Hope	Glenda	Owens	75 Iron Mountain Drive	Sylva	NC	28779	586-3947
New Savannah	Cathey	Foxx	643 Perley Hyatt Rd	Sylva	NC	28779	586-5233
New Savannah	Ruth	Knowles	957 Cabe Rd.	Sylva	NC	28779	586-6729
Ochre Hill	Nancy	Nichols	8 Stone Wall Rd	Whittier	NC	28789	586-4581
Old Savannah	Becky Jo	Patterson	769 Rufus Robinson Rd	Sylva	NC	28779	586-2456
Old Savannah	Angie	White	375 Nighthawk Dr	Sylva	NC	28779	586-2612
Speedwell	Becky	Wilkes	1356 Pressley Creek Rd	Cullowhee	NC	28723	293-5157
Speedwell	Dana	Wilkes	1358 Pressley Creek Rd	Cullowhee	NC	28723	293-9400
Tilley Creek	Geralene	Ashe	65 Living Water Drive	Cullowhee	NC	28723	
Unity	Marian	Aldridge	229 Triple Fork Rd	Cullowhee	NC	28723	293-5963
Wilkesdale	Linda	Proctor	P O Box 1814	Sylva	NC	28779	586-5868
Zion Hill	Shannon	Johnson	2846 Pumpkintown Rd	Sylva	NC	28779	

Chairmen of Deacons

Buff Creek	B.T.	Greene	1800 Skyland Drive	Sylva	NC	28779	586-2843
Cashiers	Odell	Hunter	PO Box 453	Cashiers	NC	28717	743-3618
Cullowhee Valley	Roy	Haskett	1382 Pressley Creek Rd	Cullowhee	NC	28723	293-9436
Dicks Creek	Willis	Brown	1280 Dicks Creek Rd.	Whittier	NC	28789	586-6131
East Fork	Carlin	Cabe	2224 East Fork Rd	Sylva	NC	28779	586-4621
Faith	Randy	Crawford	533 Buff Creek Rd.	Sylva	NC	28779	586-4526
Hamburg	David	Johnson	PO Box 67	Glenville	NC	28736	
Jarrett Memorial	Perry	Sutton	P O Box 69	Dillsboro	NC	28725	586-2635
Liberty	Dan	Bryson	262 Elm St.	Sylva	NC	28779	586-9176
Little Savannah	James	Wheatley	P O Box 2843	Cullowhee	NC	28723	586-4342
Locust Field	Chuck	Norris	610 Roscoe Lewis Rd.	Sylva	NC	28779	586-2801
Long Branch	Roy	Dalton	374 South Piney Mtn	Whittier	NC	28789	586-6638
Lovedale	Jerry	Melton	63 Pecan Drive	Sylva	NC	28779	586-9683
Lumberton	Fred	Houston	20 Triple Forks Rd	Cullowhee	NC	28723	293-5418
Moses Creek	Max	Cook	29 South Woods Drive	Sylva	NC	28779	586-2086
Mt Pleasant	Dennie	Mathis	230 Hebron Lane	Sylva	NC	28779	586-8520
New Hope	Donal	Shuler	32 Old Field Cemetery Rd	Sylva	NC	28779	586-2653
New Savannah	Barry	Foxx	643 Perley Hyatt Rd	Sylva	NC	28779	586-5233
Ochre Hill	Mike	Parks	117 Posey Blanton Rd	Sylva	NC	28779	586-4185
Old Savannah	Ronnie	Buchanan	PO Box 59	Dillsboro	NC	28725	586-4666
Pine Creek	Alan	Chaslain	PO Box 879	Highlands	NC	28741	526-3833
Pine Creek	Leland	Cooper	3606 Yellow Mtn Rd	Cullowhee	NC	28723	743-2597
Rockdale	Kenneth	Miller	35 Tanglewood Dr	Whittier	NC	28789	586-6392
Shoal Creek	Ron	Henderson	170 Boxwood Drive	Whittier	NC	28789	497-9887
Sols Creek	Vaughn	Brown	18 Stage Coach Trail	Tuckasegee	NC	28783	293-3252
Speedwell	Charles	Wilkes	1372 Pressley Creek Rd	Cullowhee	NC	28723	293-5327
Tilley Creek	Donald	Ashe	65 Livingwater Dr	Cullowhee	NC	28723	
Unity	Bill	Dills	413 Watson Branch	Cullowhee	NC	28723	293-5593
Webster	David	Steins	307 Briar Cliff Dr.	Sylva	NC	28779	586-6623
Wilkesdale	Alvin	Henson	P O Box 1816	Sylva	NC	28779	586-6069
Zion Hill	Buddy	Buchanan	8242 US 441S	Sylva	NC	28779	586-4846

Representatives on Associational Executive Board

Big Ridge	Michael	Machnick	36 N Robinson Ck Rd	Glenville	NC	28736	
Buff Creek	B.T.	Greene	1800 Skyland Drive	Sylva	NC	28779	586-2843
Calvary	Marshall	Bradley	204 Mayflower Lane	Sylva	NC	28779	586-4949
Cashiers	Chalmus	Jones	4250 SE 38th St.	Ocala	FL	80-7368	743-3042
Cullowhee Valley	Gladys	German	P O Box 2602	Cullowhee	NC	28723	293-5098
Dicks Creek	Aaron	Bradley	294 Johnson Bradley Rd.	Cherokee	NC	28719	497-5487
East Fork	Dusty	DeStefano	1849 East Fork Road	Sylva	NC	28779	586-3631
Faith	Randy	Crawford	533 Buff Creek Rd.	Sylva	NC	28779	586-4526
Greens Creek	Bud	Henderson	182 Sugar Fork Rd.	Sylva	NC	28779	586-2856
Hyatts Chapel	Kent	Moore	201 Martin Rd.	Whittier	NC	28789	497-2619
Jarrett Memorial	Ray	Buchanan	P O Box 215	Dillsboro	NC	28725	586-5492
Little Savannah	Kenny	Frizzell	2978 Little Savannah Rd	Sylva	NC	28779	586-3492
Locust Field	Harold	McMahan	73 Lee Bumgarner Rd	Sylva	NC	28779	586-6225
Long Branch	Roy	Dalton	374 South Piney Mtn	Whittier	NC	28789	586-6638
Lovedale	David	Monteith	286 Kitchens Branch Rd	Sylva	NC	28779	586-4448
Lumberton	Fred	Houston	20 Triple Forks Rd	Cullowhee	NC	28723	293-5418
Moses Creek	Arthur	Stephens	95 Genesis Trail Drive	Sylva	NC	28779	586-6479
Mt. Pleasant	James	Conner	33 Ashley Cagle Rd.	Sylva	NC	28779	586-4222
New Hope	Donal	Shuler	32 Old Field Cemetery Rd	Sylva	NC	28779	586-2653
Ochre Hill	Russell	Ensley	312 Ferguson Road	Sylva	NC	28779	631-3726
Rockdale	Kenneth	Miller	35 Tanglewood Dr	Whittier	NC	28789	586-6392
Scotts Creek	Dan	Ward	410 Parris Branch Rd	Sylva	NC	28779	586-6216
Speedwell	Michael	Coggins	5280 Cullowhee Mtn Rd	Cullowhee	NC	28723	293-9557
Unity	Fayne	Aldridge	229 Triple Fork Rd	Cullowhee	NC	28723	293-5963
Wilkesdale	Alvin	Henson	P O Box 1816	Sylva	NC	28779	586-6069

Ordained Ministers

Cashiers	Jim	Steed	PO Box 1577	Cashiers	NC	28717	743-2133
Cullowhee Valley	James K	Pressley	P O Box 1437	Cullowhee	NC	28723	233-5001
Hamburg	J.C.	Robinson	6536 HWY 107 N	Glenville	NC	28736	743-3069
Jarrett Memorial	Keith	Dean	31 Zenith Drive	Sylva	NC	28779	586-6170
Lighthouse	L. F. (Bill)	Sutton	202 Greens Creek Rd	Sylva	NC	28779	586-9823
Little Savannah	Ray	McCall	997 Sulphur Springs Rd	Waynesville	NC	28786	456-5915
Locust Field	Bill	Greene	388 Brooks Branch Rd.	Sylva	NC	28779	586-9759
Locust Field	Hazen	Pangle	P O Box 99	Dillsboro	NC	28725	586-4896
Long Branch	James Alvin	Brown	PO Box 51	Dillsboro	NC	28725	586-2779
Mt. Pleasant	Mike	Messer	99 Casual Ln	Waynesville	NC	28786	456-9913
New Hope	Emery	Brooks	P O Box 841	Cullowhee	NC	28723	631-0933
New Hope	Hardin	Nicholson	107 Mint Road	Sylva	NC	28779	586-5082
Scotts Creek	Dan	Ward	410 Parris Branch Rd	Sylva	NC	28779	586-6216
Speedwell	B. F.	Pressley	575 Bo Cove Rd.	Cullowhee	NC	28723	293-5124
Unity	Ernest	Ammons	Casper Rd	Cullowhee	NC	28723	
Unity	David	Hoyle	Watson Branch Rd	Cullowhee	NC	28723	
Unity	Jim Ed	Powell	69 Poncho Dr	Cullowhee	NC	28723	293-9310
Unity	Bobby	Watson	77 Watson Br Rd	Cullowhee	NC	28723	293-3170
Webster	Wayne	Caldwell	2064 Cope Creek Rd	Sylva	NC	28779	586-4759
	Kenneth	Carver	215 Palmer Rd	Franklin	NC	28734	369-2128



## Congregation Summary

### Tuckaseigee Association

*Legend: 3 --- Total Baptisms    4 -- Other Additions    1 -- Total Membership    15 -- Total SS Enrollment    16 -- SS Avg. Weekly Attendance    18 -- Vacation Bible School  
 DTEN (19+20) -- Total DT Enrollment/Participation    21 -- Total Music Ministry Enrollment    23 -- Total WMU Enrollment    24 -- Total Brotherhood Enrollment  
 TRE -- Total Receipts (26+27+28)    29 -- Total Cooperative Program    30 -- Total Assn. Missions    TME -- Total Mission Expenditures (29-35)*

CONGREGATION	C/M	3	4	1	15	16	18	DTEN	21	23	24	TRE	29	30	TME
Sols Creek	C														
Speedwell Bapt Ch	C	2	3	223	22	18	0	0	25	0	0	\$28,308	\$67	\$0	\$4,113
Tilley Creek	C	10	6	105	49	40	69	0	23	0	0	\$0	\$0	\$0	\$0
Unity	C														
Webster	C														
Wilkesdale	C	0	3	48	21	17	0	14	8	7	0	\$18,129	\$795	\$1,135	\$2,430
Zion Hill	C	0	0	254	82	50	0	0	20	12	0	\$54,847	\$300	\$0	\$1,641
<b>Total:</b>		<b>70</b>	<b>97</b>	<b>5,441</b>	<b>1,925</b>	<b>1,121</b>	<b>1,109</b>	<b>448</b>	<b>693</b>	<b>312</b>	<b>75</b>	<b>\$1,690,058</b>	<b>\$59,948</b>	<b>\$20,193</b>	<b>\$257,381</b>

## Congregation and Member Info

### Tuckaseegee Association

*Legend: 1 -- Total Membership 2 -- Resident Membership 4 -- Other Additions 5 - New Member Training 6 -- Year Organized 7 -- Year Pastor Came 8 -- Location (A-J)*  
*9 -- AM Worship Att. 10 -- Church-Type Misions Started 11 -- Church-Type Misions Operating 12 -- Lost/Unchurched 13 -- Assoc. Mis on % Basis*  
*14 -- Intercessory Prayer Race -- Racial Ethnic Group*

CONGREGATION	C/M	1	2	4	5	6	7	8	9	10	11	12	13	14	15
Big Ridge	C	0	0	0	0	0	0		0	0	0				1
Buff Creek Bapt Ch	C	255	223	0	0	1905	1999	A	80	0	0	Y	N	Y	1
Calvary Missionary Baptist	C	130	89	0	0	1949	1994	A	80	0	0	Y	Y	Y	1
Cashiers Bapt Ch	C	386	272	0	0	1929	2000	C	100	0	0	N	N	Y	1
Cullowhee Valley Bapt	C	31	28	0	0	1986	2004	A	8	0	0	N	N	N	1
Dicks Creek Bapt Ch	C	98	74	0	0	1903	2000	A	25	0	0	N	N	Y	1
East Fork Bapt	C	100	61	0	0	1882	1989	A	60	0	0	Y	Y	Y	1
Faith Baptist Church	C	78	78	0	0	1995	1998	C	55	0	0	Y	Y	Y	1
Greens Creek Bapt Church	C	155	109	2	0	1921	2004	A	45	0	0	Y	Y	Y	1
Hamburg	C	219	219	5	0	1849	2001	C	120	0	0	Y	N	Y	1
Hyatts Chapel	C	75	75	1	0	1916	2004	A	0	0	0	N	N	N	1
Jarrett Memorial Bapt	C	174	108	3	0	1888	2003	B	32	0	0	Y	N	Y	1
Liberty Bapt Ch	C														2
Little Savannah	C	190	128	0	0	1914	1998	A	58	0	0	N	Y	N	1
Locust Field Bapt	C	159	106	1	0	1895	1971	A	55	0	0	Y	N	Y	3
Long Branch Missionary	C	71	71	2	0	1934	2001	A	36	0	0	N	N	N	1
Lovedale Bapt Ch	C	204	168	1	0	1919	1998	C	65	0	0	N	Y	Y	1
Lumberton	C	19	14	0	0	1929	2000	A	15	0	0	N	N	N	1
Moses Creek Bapt Ch	C	91	88	0	0	1919	2003	A	50	0	0	Y	N	Y	1
Mount Pleasant	C	91	91	9	0	1852	2004	A	40	0	0	N	N	N	1
New Hope Bapt Ch	C	434	419	10	0	1955	1988	A	225	0	0	Y	N	Y	1
New Savannah	C	32	28	15	0	1905	2003	A	29	0	0	Y	N	Y	1
Ochre Hill	C	370	127	1	0	1890	2002	A	100	0	0	Y	Y	Y	1
Old Savannah	C	545	427	6	0	1835	2001	A	150	0	0	N	N	N	1
Pine Creek	C	120	55	2	0	1945	0	A	35	0	0	Y	N	Y	1
Promise Land	C														1
Rockdale Bapt Ch	C	167	100	2	0	1947	2004	A	47	0	0	N	N	N	1
Scotts Creek Bapt Ch	C	617	497	25	0	1830	1999	D	180	0	0	Y	N	Y	1
Shoal Creek	C														1
Sols Creek	C														1
Speedwell Bapt Ch	C	223	93	3	0	1902	2002	A	40	0	0	N	Y	Y	1
Tilley Creek	C	105	76	6	0	1951	2001	A	60	0	0	Y	N	N	1
Unity	C														1
Webster	C														1
Wilkesdale	C	48	45	3	0	1920	1997	C	25	0	0	N	N	N	1
Zion Hill	C	254	160	0	0	1900	2002	A	78	0	0	Y	N	N	1

## Congregation and Member Info

### Tuckaseigee Association

*Legend: 1 -- Total Membership 2 -- Resident Membership 4 -- Other Additions 5 - New Member Training 6 -- Year Organized 7 -- Year Pastor Came 8-- Location (A-J)*  
*9 -- AM Worship Att. 10 -- Church-Type Misions Started 11 -- Church-Type Missions Operating 12 -- Lost/Unchurched 13 -- Assoc. Mis on % Basis*  
*14 -- Intercessory Prayer Race -- Racial Ethnic Group*

CONGREGATION	C/M	1	2	4	5	6	7	8	9	10	11	12	13	14	15
<b>Total:</b>		5,441	4,029	97	0				1,893	0	0				

## Baptism Info

### Tuckaseigee Association

*Legend: 3 -- Baptisms Total    3a -- Baptisms 0-5    3b -- Baptisms 6-8    3c -- Baptisms 9-11    3d -- Baptisms 12-17    3e -- Baptisms 18-29    3f -- Baptisms 30-59    3g -- Baptisms*

CONGREGATION	C/M	3	3a	3b	3c	3d	3e	3f	3g
Big Ridge	C	0	0	0	0	0	0	0	0
Buff Creek Bapt Ch	C	1	0	1	0	0	0	0	0
Calvary Missionary Baptist	C	0	0	0	0	0	0	0	0
Cashiers Bapt Ch	C	5	0	3	1	1	0	0	0
Cullowhee Valley Bapt	C	0	0	0	0	0	0	0	0
Dicks Creek Bapt Ch	C	0	0	0	0	0	0	0	0
East Fork Bapt	C	4	0	3	0	0	0	1	0
Faith Baptist Church	C	4	0	0	1	0	3	0	0
Greens Creek Bapt Church	C	1	0	0	0	1	0	0	0
Hamburg	C	4	0	0	0	0	2	0	2
Hyatts Chapel	C	1	0	0	0	0	1	0	0
Jarrett Memorial Bapt	C	0	0	0	0	0	0	0	0
Liberty Bapt Ch	C								
Little Savannah	C	0	0	0	0	0	0	0	0
Locust Field Bapt	C	2	0	0	1	0	0	1	0
Long Branch Missionary	C	0	0	0	0	0	0	0	0
Lovedale Bapt Ch	C	1	0	0	0	1	0	0	0
Lumberton	C	0	0	0	0	0	0	0	0
Moses Creek Bapt Ch	C	1	0	1	0	0	0	0	0
Mount Pleasant	C	2	0	0	2	0	0	0	0
New Hope Bapt Ch	C	8	0	1	1	2	1	3	0
New Savannah	C	2	0	0	0	0	0	2	0
Ochre Hill	C	7	0	1	3	0	0	3	0
Old Savannah	C	7	0	1	2	2	1	1	0
Pine Creek	C	0	0	0	0	0	0	0	0
Promise Land	C								
Rockdale Bapt Ch	C	1	0	0	0	0	1	0	0
Scotts Creek Bapt Ch	C	7	0	1	3	1	2	0	0
Shoal Creek	C								
Sols Creek	C								
Speedwell Bapt Ch	C	2	0	0	0	0	0	2	0
Tilley Creek	C	10	0	0	3	1	0	4	2

73



## Baptism Info

### Tuckasegee Association

*Legend: 3 -- Baptisms Total    3a -- Baptisms 0-5    3b -- Baptisms 6-8    3c -- Baptisms 9-11    3d -- Baptisms 12-17    3e -- Baptisms 18-29    3f -- Baptisms 30-59    3g -- Baptisms*

CONGREGATION	C/M	3	3a	3b	3c	3d	3e	3f	3g
Unity	C								
Webster	C								
Wilkesdale	C	0	0	0	0	0	0	0	0
Zion Hill	C	0	0	0	0	0	0	0	0
<b>Total:</b>		<b>70</b>	<b>0</b>	<b>12</b>	<b>17</b>	<b>9</b>	<b>11</b>	<b>17</b>	<b>4</b>

## Sunday School Info - Enrollment

### Tuckaseegee Association

*Legend: 15 -- Total SS Enrollment 15a -- SS 0-5 15b -- SS 6-11 15c -- SS 12-17 15d -- SS 18-24 15e -- SS 25-34 15f -- SS 35-54 15g -- SS 55 up  
15h -- SS General Officers 15i -- Other Bible Study 16 -- SS Avg Weekly Attendance 17 -- Non-Cong Members 18 -- Vacation Bible School*

CONGREGATION	C/M	15	15a	15b	15c	15d	15e	15f	15g	15h	15i	16	17	18
Big Ridge	C	0	0	0	0	0	0	0	0	0	0	0	0	0
Buff Creek Bapt Ch	C	81	13	7	10	1	20	2	12	1	0	55	7	68
Calvary Missionary Baptist	C	76	9	6	3	6	4	15	4	5	0	39	4	35
Cashiers Bapt Ch	C	139	9	12	10	4	21	16	31	2	20	60	10	50
Cullowhee Valley Bapt	C	8	0	0	0	0	0	0	4	0	0	8	0	0
Dicks Creek Bapt Ch	C	45	4	1	3	5	3	7	0	3	10	0	6	0
East Fork Bapt	C	45	6	10	4	1	2	1	13	2	0	37	0	0
Faith Baptist Church	C	40	1	3	1	2	5	7	8	1	0	30	0	0
Greens Creek Bapt Church	C	54	4	9	3	0	2	6	3	3	0	25	0	40
Hamburg	C	82	1	6	8	6	9	15	14	3	0	64	0	84
Hyatts Chapel	C	69	3	5	4	4	3	15	3	3	20	30	0	0
Jarrett Memorial Bapt	C	34	0	6	5	2	3	4	3	3	0	20	2	15
Liberty Bapt Ch	C													
75 Little Savannah	C	52	2	11	5	1	5	9	2	2	10	35	0	71
Locust Field Bapt	C	68	0	4	7	1	4	13	8	4	15	38	0	58
Long Branch Missionary	C	46	5	2	0	2	5	9	8	6	0	26	0	0
Lovedale Bapt Ch	C	56	6	2	2	0	3	0	29	14	0	36	0	35
Lumberton	C	0	0	0	0	0	0	0	0	0	0	0	0	0
Moses Creek Bapt Ch	C	60	4	6	4	2	9	6	19	0	0	50	5	45
Mount Pleasant	C	52	3	4	4	3	4	6	0	3	0	33	3	60
New Hope Bapt Ch	C	250	18	24	10	32	60	25	35	6	20	78	20	160
New Savannah	C	17	0	3	1	0	0	6	4	0	0	17	0	0
Ochre Hill	C	130	15	7	7	11	15	15	50	0	0	65	0	50
Old Savannah	C	93	9	10	7	14	14	14	16	0	0	77	0	125
Pine Creek	C	27	1	0	4	0	0	4	8	3	0	25	27	0
Promise Land	C													
Rockdale Bapt Ch	C	36	6	4	5	0	4	5	4	0	0	33	0	44
Scotts Creek Bapt Ch	C	191	34	23	12	12	21	34	12	4	0	115	10	100
Shoal Creek	C													
Sols Creek	C													
Speedwell Bapt Ch	C	22	0	1	1	1	1	6	5	0	0	18	0	0

## Sunday School Info - Enrollment

### Tuckaseigee Association

*Legend: 15 -- Total SS Enrollment 15a -- SS 0-5 15b -- SS 6-11 15c -- SS 12-17 15d -- SS 18-24 15e -- SS 25-34 15f -- SS 35-54 15g -- SS 55 up  
15h -- SS General Officers 15i -- Other Bible Study 16 -- SS Avg Weekly Attendance 17 -- Non-Cong Members 18 -- Vacation Bible School*

CONGREGATION	C/M	15	15a	15b	15c	15d	15e	15f	15g	15h	15i	16	17	18
Tilley Creek	C	49	0	2	3	4	6	13	11	4	0	40	0	69
Unity	C													
Webster	C													
Wilkesdale	C	21	0	4	0	0	1	3	5	0	0	17	0	0
Zion Hill	C	82	5	14	5	12	7	18	18	3	0	50	0	0
<b>Total:</b>		<b>1,925</b>	<b>158</b>	<b>186</b>	<b>128</b>	<b>126</b>	<b>231</b>	<b>274</b>	<b>329</b>	<b>75</b>	<b>95</b>	<b>1,121</b>	<b>94</b>	<b>1,109</b>

## Discipleship Training Info

### Tuckaseegee Association

*Legend: 19 -- Total Ongoing Discipleship Training    19a -- Ongoing Preschool B-5    19b -- Ongoing Child 6-11    19c -- Ongoing Youth 12-17    19d -- Ongoing Adult 18-up*  
*19e -- DT Gen. Officers    20 -- Total Short-Term DT    20a -- Short-Term Preschool    20b -- Short-Term Children    20c -- Short-Term Youth*  
*20d -- Short-Term Adults - Gen. Officers    DTEN (19+20) -- Total DT Enrollment/Participation*

CONGREGATION	C/M	19	19a	19b	19c	19d	19e	20	20a	20b	20c	20d	DTEN
Big Ridge	C	0	0	0	0	0	0	0	0	0	0	0	0
Buff Creek Bapt Ch	C	0	0	0	0	0	0	4	0	0	0	4	4
Calvary Missionary Baptist	C	0	0	0	0	0	0	0	0	0	0	0	0
Cashiers Bapt Ch	C	0	0	0	0	0	0	0	0	0	0	0	0
Cullowhee Valley Bapt	C	8	0	0	0	8	0	0	0	0	0	0	8
Dicks Creek Bapt Ch	C	0	0	0	0	0	0	0	0	0	0	0	0
East Fork Bapt	C	0	0	0	0	0	0	0	0	0	0	0	0
Faith Baptist Church	C	0	0	0	0	0	0	0	0	0	0	0	0
Greens Creek Bapt Church	C	14	0	0	0	13	1	0	0	0	0	0	14
Hamburg	C	82	4	15	8	54	1	0	0	0	0	0	82
Hyatts Chapel	C	0	0	0	0	0	0	0	0	0	0	0	0
Jarrett Memorial Bapt	C	10	0	0	1	6	3	0	0	0	0	0	10
Liberty Bapt Ch	C												
Little Savannah	C	34	2	11	5	10	6	0	0	0	0	0	34
Locust Field Bapt	C	0	0	0	0	0	0	0	0	0	0	0	0
Long Branch Missionary	C	32	4	2	0	22	4	0	0	0	0	0	32
Lovedale Bapt Ch	C	0	0	0	0	0	0	0	0	0	0	0	0
Lumberton	C	0	0	0	0	0	0	0	0	0	0	0	0
Moses Creek Bapt Ch	C	35	3	5	1	26	0	0	0	0	0	0	35
Mount Pleasant	C	0	0	0	0	0	0	0	0	0	0	0	0
New Hope Bapt Ch	C	175	15	20	3	130	7	0	0	0	0	0	175
New Savannah	C	0	0	0	0	0	0	0	0	0	0	0	0
Ochre Hill	C	0	0	0	0	0	0	0	0	0	0	0	0
Old Savannah	C	0	0	0	0	0	0	0	0	0	0	0	0
Pine Creek	C	0	0	0	0	0	0	0	0	0	0	0	0
Promise Land	C												
Rockdale Bapt Ch	C	0	0	0	0	0	0	0	0	0	0	0	0
Scotts Creek Bapt Ch	C	0	0	0	0	0	0	40	0	0	0	40	40
Shoal Creek	C												
Sols Creek	C												
Speedwell Bapt Ch	C	0	0	0	0	0	0	0	0	0	0	0	0
Tilley Creek	C	0	0	0	0	0	0	0	0	0	0	0	0
Unity	C												

## Discipleship Training Info

### Tuckaseegee Association

*Legend: 19 -- Total Ongoing Discipleship Training    19a -- Ongoing Preschool B-5    19b -- Ongoing Child 6-11    19c -- Ongoing Youth 12-17    19d -- Ongoing Adult 18-up  
 19e -- DT Gen. Officers    20 -- Total Short-Term DT    20a -- Short-Term Preschool    20b -- Short-Term Children    20c -- Short-Term Youth  
 20d -- Short-Term Adults - Gen. Officers    DTEN (19+20) -- Total DT Enrollment/Participation*

CONGREGATION	C/M	19	19a	19b	19c	19d	19e	20	20a	20b	20c	20d	DTEN
Webster	C												
Wilkesdale	C	14	0	1	0	13	0	0	0	0	0	0	14
Zion Hill	C	0	0	0	0	0	0	0	0	0	0	0	0
<b>Total:</b>		<b>404</b>	<b>28</b>	<b>54</b>	<b>18</b>	<b>282</b>	<b>22</b>	<b>44</b>	<b>0</b>	<b>0</b>	<b>0</b>	<b>44</b>	<b>448</b>

## Music Ministry Info

### Tuckaseegee Association

*Legend: 21 -- Total Music Ministry Enrollment    21a -- Preschool 3-5    21b -- Children 6-11    21c -- Youth 12-17    21d -- Adult Choir 18-up    21e -- Other Music Groups*

CONGREGATION	C/M	21	21a	21b	21c	21d	21e
Big Ridge	C	0	0	0	0	0	0
Buff Creek Bapt Ch	C	32	6	7	0	19	0
Calvary Missionary Baptist	C	43	5	4	2	32	0
Cashiers Bapt Ch	C	60	0	0	15	25	20
Cullowhee Valley Bapt	C	8	0	0	0	8	0
Dicks Creek Bapt Ch	C	13	0	1	0	10	2
East Fork Bapt	C	24	0	0	1	23	0
Faith Baptist Church	C	12	0	0	0	12	0
Greens Creek Bapt Church	C	14	0	0	0	14	0
Hamburg	C	17	0	0	0	16	1
Hyatts Chapel	C	0	0	0	0	0	0
Jarrett Memorial Bapt	C	12	0	0	0	12	0
Liberty Bapt Ch	C						
Little Savannah	C	24	1	11	5	7	0
79 Locust Field Bapt	C	39	0	10	0	29	0
Long Branch Missionary	C	0	0	0	0	0	0
Lovedale Bapt Ch	C	23	0	0	0	23	0
Lumberton	C	0	0	0	0	0	0
Moses Creek Bapt Ch	C	25	0	0	0	25	0
Mount Pleasant	C	20	0	0	0	20	0
New Hope Bapt Ch	C	118	15	15	2	66	20
New Savannah	C	0	0	0	0	0	0
Ochre Hill	C	35	5	9	1	20	0
Old Savannah	C	35	3	2	0	30	0
Pine Creek	C	0	0	0	0	0	0
Promise Land	C						
Rockdale Bapt Ch	C	13	0	0	2	11	0
Scotts Creek Bapt Ch	C	50	15	5	0	30	0
Shoal Creek	C						
Sols Creek	C						
Speedwell Bapt Ch	C	25	0	0	0	25	0
Tilley Creek	C	23	0	2	0	21	0

## Music Ministry Info

### Tuckaseegee Association

*Legend: 21 -- Total Music Ministry Enrollment    21a -- Preschool 3-5    21b -- Children 6-11    21c -- Youth 12-17    21d -- Adult Choir 18-up    21e -- Other Music Groups*

CONGREGATION	C/M	21	21a	21b	21c	21d	21e
Unity	C						
Webster	C						
Wilkesdale	C	8	0	1	0	7	0
Zion Hill	C	20	1	2	2	15	0
<b>Total:</b>		<b>693</b>	<b>51</b>	<b>69</b>	<b>30</b>	<b>500</b>	<b>43</b>

## Missions Involvement

### Tuckaseigee Association

*Legend: 22 -- Miss. Project Participation    22a -- Local Community    22b -- State    22c -- US/Canada    22d -- International*

CONGREGATION	C/M	22	22a	22b	22c	22d
Big Ridge	C	0	0	0	0	0
Buff Creek Bapt Ch	C	0	0	0	0	0
Calvary Missionary Baptist	C	1	0	0	0	1
Cashiers Bapt Ch	C	143	40	30	70	3
Culowhee Valley Bapt	C	0	0	0	0	0
Dicks Creek Bapt Ch	C	0	0	0	0	0
East Fork Bapt	C	20	16	2	2	0
Faith Baptist Church	C	30	0	10	10	10
Greens Creek Bapt Church	C	0	0	0	0	0
Hamburg	C	6	0	0	6	0
Hyatts Chapel	C	0	0	0	0	0
Jarrett Memorial Bapt	C	0	0	0	0	0
Liberty Bapt Ch	C					
Little Savannah	C	78	18	35	25	0
Locust Field Bapt	C	40	15	5	0	20
Long Branch Missionary	C	0	0	0	0	0
Lovedale Bapt Ch	C	89	35	12	0	42
Lumberton	C	0	0	0	0	0
Moses Creek Bapt Ch	C	0	0	0	0	0
Mount Pleasant	C	0	0	0	0	0
New Hope Bapt Ch	C	160	40	60	0	60
New Savannah	C	0	0	0	0	0
Ochre Hill	C	0	0	0	0	0
Old Savannah	C	1	0	0	0	1
Pine Creek	C	0	0	0	0	0
Promise Land	C					
Rockdale Bapt Ch	C	0	0	0	0	0
Scotts Creek Bapt Ch	C	7	0	0	0	7
Shoal Creek	C					
Sols Creek	C					
Speedwell Bapt Ch	C	0	0	0	0	0
Tilley Creek	C	0	0	0	0	0



## Missions Involvement

### Tuckasegee Association

*Legend: 22 -- Miss. Project Participation    22a -- Local Community    22b -- State    22c -- US/Canada    22d -- International*

CONGREGATION	C/M	22	22a	22b	22c	22d
Unity	C					
Webster	C					
Wilkesdale	C	0	0	0	0	0
Zion Hill	C	0	0	0	0	0
<b>Total:</b>		<b>575</b>	<b>164</b>	<b>154</b>	<b>113</b>	<b>144</b>



## Missions Education

### Tuckaseegee Association

*Legend: 23 -- Total WMU Enrollment    23a -- Ages Birth-5    23b -- Ages 6-11    23c -- Ages 12-17    23d -- Ages 18 up    23e -- WMU Leadership Team    23f -- WMU Missions*  
*24 -- Total Brotherhood Enrollment    24a -- Ages 6-11    24b -- Ages 12-17    24c -- Ages 18 up    25 -- Other Missions Education*

CONGREGATION	C/M	23	23a	23b	23c	23d	23e	23f	24	24a	24b	24c	25
Tilley Creek	C	0	0	0	0	0	0	0	0	0	0	0	0
Unity	C												
Webster	C												
Wilkesdale	C	7	0	1	0	6	0	0	0	0	0	0	0
Zion Hill	C	12	0	0	0	12	0	0	0	0	0	0	0
<b>Total:</b>		<b>312</b>	<b>12</b>	<b>19</b>	<b>8</b>	<b>198</b>	<b>24</b>	<b>51</b>	<b>75</b>	<b>25</b>	<b>5</b>	<b>45</b>	<b>18</b>

## Financial - General

### Tuckaseigee Association

Legend: 26 -- Undesignated Gifts    27 -- Designated Gifts    28 -- Other Receipts    TRE -- Total Receipts (26+27+28)    36 -- Value Cong. Property    37 -- Cong. Debt

CONGREGATION	C/M	26	27	28	TRE	36	37
Big Ridge	C	\$0	\$0	\$0	\$0	\$0	\$0
Buff Creek Bapt Ch	C	\$64,285	\$5,603	\$5,798	\$75,686	\$1,050,000	\$0
Calvary Missionary Baptist	C	\$18,038	\$9,249	\$0	\$27,287	\$215,000	\$0
Cashiers Bapt Ch	C	\$164,955	\$59,220	\$0	\$224,174	\$1,317,000	\$0
Culowhee Valley Bapt	C	\$10,829	\$1,405	\$500	\$12,734	\$0	\$0
Dicks Creek Bapt Ch	C	\$6,038	\$4,734	\$0	\$10,772	\$100,000	\$0
East Fork Bapt	C	\$44,002	\$0	\$0	\$44,002	\$0	\$0
Faith Baptist Church	C	\$60,795	\$1,433	\$0	\$62,228	\$460,000	\$200,000
Greens Creek Bapt Church	C	\$34,942	\$2,509	\$0	\$37,451	\$280,000	\$0
Hamburg	C	\$142,530	\$8,651	\$341	\$151,522	\$360,600	\$0
Hyatts Chapel	C	\$0	\$0	\$0	\$0	\$0	\$0
Jarrett Memorial Bapt	C	\$27,067	\$526	\$2,649	\$30,242	\$0	\$0
Liberty Bapt Ch	C						
Little Savannah	C	\$25,023	\$1,835	\$0	\$26,858	\$200,000	\$0
85 Locust Field Bapt	C	\$15,620	\$20,853	\$91	\$36,564	\$345,900	\$0
Long Branch Missionary	C	\$13,503	\$2,242	\$0	\$15,745	\$60,000	\$0
Lovedale Bapt Ch	C	\$63,244	\$17,493	\$1,600	\$82,337	\$1,381,400	\$0
Lumberton	C	\$7,413	\$780	\$0	\$8,193	\$0	\$0
Moses Creek Bapt Ch	C	\$54,120	\$0	\$0	\$54,120	\$120,000	\$0
Mount Pleasant	C	\$16,769	\$6,000	\$0	\$22,769	\$0	\$0
New Hope Bapt Ch	C	\$95,342	\$28,408	\$5,100	\$128,851	\$4,000,000	\$0
New Savannah	C	\$10,980	\$400	\$1,538	\$12,918	\$200,000	\$0
Ochre Hill	C	\$71,984	\$6,254	\$0	\$78,238	\$81,500	\$0
Old Savannah	C	\$86,711	\$4,043	\$0	\$90,754	\$478,000	\$0
Pine Creek	C	\$32,000	\$0	\$1,750	\$33,750	\$500,000	\$0
Promise Land	C						
Rockdale Bapt Ch	C	\$34,113	\$0	\$0	\$34,113	\$275,000	\$0
Scotts Creek Bapt Ch	C	\$212,884	\$74,581	\$0	\$287,465	\$1,000,000	\$0
Shoal Creek	C						
Sols Creek	C						
Speedwell Bapt Ch	C	\$8,601	\$19,707	\$0	\$28,308	\$0	\$200,000
Tilley Creek	C	\$0	\$0	\$0	\$0	\$0	\$0

**Financial - General**

**Tuckaseigee Association**

*Legend: 26 -- Undesignated Gifts 27 -- Designated Gifts 28 -- Other Receipts TRE -- Total Receipts (26+27+28) 36 -- Value Cong. Property 37 -- Cong. Debt*

CONGREGATION	C/M	26	27	28	TRE	36	37
Unity	C						
Webster	C						
Wilkesdale	C	\$18,129	\$0	\$0	\$18,129	\$245,000	\$0
Zion Hill	C	\$14,731	\$40,116	\$0	\$54,847	\$0	\$0
<b>Total:</b>		<b>\$1,354,649</b>	<b>\$316,042</b>	<b>\$19,367</b>	<b>\$1,690,058</b>	<b>\$12,669,400</b>	<b>\$0</b>

## Financial - Missions

### Tuckaseegee Association

*Legend: 29 -- Cooperative Programs    30 -- Assoc. Missions    31 -- State Missions    32 -- Annie Armstrong    33 -- Lottie Moon  
34-- Other SBC Miss. Exp.    35 -- Non-SBC Miss. Exp.    TME -- Total Mission Expenditures (29-35)*

CONGREGATION	C/M	29	30	31	32	33	34	35	TME
Big Ridge	C	\$0	\$0	\$0	\$0	\$0	\$0	\$0	\$0
Buff Creek Bapt Ch	C	\$2,972	\$1,200	\$326	\$1,541	\$3,848	\$225	\$175	\$10,287
Calvary Missionary Baptist	C	\$361	\$100	\$0	\$100	\$100	\$600	\$1,903	\$3,164
Cashiers Bapt Ch	C	\$3,960	\$1,980	\$440	\$11,280	\$14,641	\$0	\$0	\$32,301
Cullowhee Valley Bapt	C	\$165	\$60	\$165	\$200	\$265	\$205	\$0	\$1,060
Dicks Creek Bapt Ch	C	\$0	\$132	\$0	\$143	\$326	\$144	\$2,240	\$2,985
East Fork Bapt	C	\$550	\$780	\$350	\$250	\$350	\$700	\$8,531	\$11,511
Faith Baptist Church	C	\$6,063	\$1,819	\$200	\$335	\$480	\$298	\$7,074	\$16,269
Greens Creek Bapt Church	C	\$5,400	\$2,400	\$0	\$300	\$646	\$0	\$0	\$8,746
Hamburg	C	\$5,138	\$2,400	\$0	\$970	\$3,073	\$1,219	\$2,950	\$15,750
Hyatts Chapel	C	\$0	\$1,000	\$600	\$1,200	\$0	\$6,250	\$0	\$9,050
Jarrett Memorial Bapt	C	\$300	\$300	\$42	\$75	\$406	\$45	\$1,600	\$2,768
Liberty Bapt Ch	C								
87 Little Savannah	C	\$400	\$300	\$0	\$435	\$425	\$300	\$2,171	\$4,031
Locust Field Bapt	C	\$250	\$200	\$214	\$231	\$528	\$2,105	\$1,020	\$4,548
Long Branch Missionary	C	\$0	\$300	\$706	\$311	\$539	\$386	\$5,959	\$8,201
Lovedale Bapt Ch	C	\$5,739	\$1,897	\$0	\$1,085	\$2,680	\$0	\$0	\$11,401
Lumberton	C	\$200	\$200	\$50	\$130	\$100	\$300	\$200	\$1,180
Moses Creek Bapt Ch	C	\$0	\$0	\$0	\$0	\$0	\$1,330	\$11,423	\$12,753
Mount Pleasant	C	\$0	\$240	\$0	\$0	\$0	\$0	\$0	\$240
New Hope Bapt Ch	C	\$4,800	\$1,300	\$9,600	\$500	\$708	\$300	\$4,950	\$22,158
New Savannah	C	\$0	\$50	\$0	\$50	\$75	\$0	\$0	\$175
Ochre Hill	C	\$1,200	\$1,200	\$1,152	\$1,370	\$1,976	\$0	\$0	\$6,898
Old Savannah	C	\$0	\$0	\$0	\$310	\$500	\$200	\$4,300	\$5,310
Pine Creek	C	\$0	\$0	\$0	\$0	\$0	\$0	\$0	\$0
Promise Land	C								
Rockdale Bapt Ch	C	\$0	\$1,200	\$0	\$0	\$1,500	\$1,550	\$1,201	\$5,451
Scotts Creek Bapt Ch	C	\$21,288	\$0	\$863	\$3,840	\$4,504	\$0	\$22,465	\$52,960
Shoal Creek	C								
Sols Creek	C								
Speedwell Bapt Ch	C	\$67	\$0	\$0	\$0	\$75	\$3,470	\$501	\$4,113

## Financial - Missions

### Tuckaseigee Association

Legend: 29 -- Cooperative Programs    30 -- Assoc. Missions    31 -- State Missions    32 -- Annie Armstrong    33 -- Lottie Moon  
 34 -- Other SBC Miss. Exp.    35 -- Non-SBC Miss. Exp.    TME -- Total Mission Expenditures (29-35)

CONGREGATION	C/M	29	30	31	32	33	34	35	TME
Tilley Creek	C	\$0	\$0	\$0	\$0	\$0	\$0	\$0	\$0
Unity	C								
Webster	C								
Wilkesdale	C	\$795	\$1,135	\$0	\$200	\$300	\$0	\$0	\$2,430
Zion Hill	C	\$300	\$0	\$420	\$366	\$555	\$0	\$0	\$1,641
<b>Total:</b>		<b>\$59,948</b>	<b>\$20,193</b>	<b>\$15,128</b>	<b>\$25,222</b>	<b>\$38,600</b>	<b>\$19,627</b>	<b>\$78,663</b>	<b>\$257,381</b>

**DIGEST OF CHURCH Profiles  
2004**

At the time this 2004 report was completed, 24 of 36 Association member churches (67%) had reported.

	2004
<b>Total Baptisms</b>	<b>49</b>
<b>Other Additions</b>	<b>82</b>
<b>Resident Membership</b>	<b>3,384</b>
<b>Average Sunday School Attendance</b>	<b>955</b>
<b>VBS Enrollment</b>	<b>854</b>
<b>Discipleship Training Enrollment</b>	<b>414</b>
<b>Music Enrollment</b>	<b>435</b>
<b>WMU Enrollment</b>	<b>262</b>
<b>Brotherhood Enrollment</b>	<b>60</b>
<b>Total Receipts</b>	<b>\$1,330,154</b>
<b>Cooperative Program</b>	<b>\$49,525</b>
<b>Associational Missions</b>	<b>\$15,854</b>
<b>North Carolina State Missions</b>	<b>\$14,488</b>
<b>Annie Armstrong Offering</b>	<b>\$13,172</b>
<b>Lottie Moon Offering</b>	<b>\$23,054</b>
<b>Other Southern Baptist Convention Missions</b>	<b>\$18,729</b>
<b>Non-Southern Baptist Convention Missions</b>	<b>\$69,418</b>
<b>Total Missions</b>	<b>\$1,534,394</b>



